

Map Your Experience

NCTCOG Public Meeting | December 12, 2022

Martin Bate



North Central Texas
Council of Governments

VISIT OUR WEBSITE FOR MORE RESOURCES | www.nctcog.org/MapYourExperience



About Map Your Experience

- Web-based outreach tool
- Push towards digital engagement and increasing options for participation
- MYE guiding principles:



North Central Texas Council of Governments

Agency Administration | Aging Services | Economic Development | Emergency Preparedness | Environment & Development | Executive Director | NCT 9-1-1 | Public Safety | Regional Data | Workforce Solutions | Transportation

Map Your Experience

Help us plan for the future by letting us know how the region's transportation system could better serve you! Map Your Experience gathers input on transportation from members of the public just like you, who are experts in their own daily travel experiences throughout the region. Regional comments help us to see where transportation problems are across the region and enables us to start looking for solutions. **Map Your Experience is now available in Spanish, too!**

Launch Map Your Experience

What are people saying?

Comment Dashboard

This dashboard can view comments on the map and filter by various topics, such as comment category and zip code. It also offers a selection of overlay map layers like the Environmental Justice Index, Mobility Plan recommendations, Census Bureau Zip Code Tabulation Areas, and more. The Map Your Experience dashboard is updated monthly.

Map Your Experience Comments Received for A...

Comment Distribution

Filter comments by category. You may select multiple categories.

Category	Count
Traffic	180
Real Estate	150
Sign Posting	120
Debris	100
Other	80
Traffic Signs	60
Service	40
Reporting	30
Routing	20
Lighting	10
Drainage	10
Other	10

Comment Detail

Comment ID: 822010

Map: [Map]

Category: [Category]

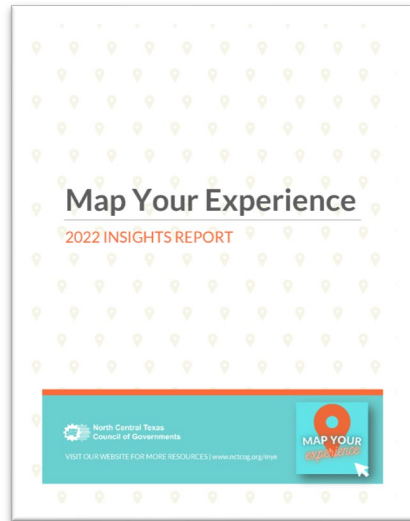
Comment: [Comment]

How It Works

- Visit www.nctcog.org/mapyourexperience and follow the prompts
- Drop a pin on the map where you have trouble traveling
- Add details in the form
- Identifying information is optional and doesn't appear in dashboard or comment reports
- Zip code helps us perform additional analysis and plan on a regional scale

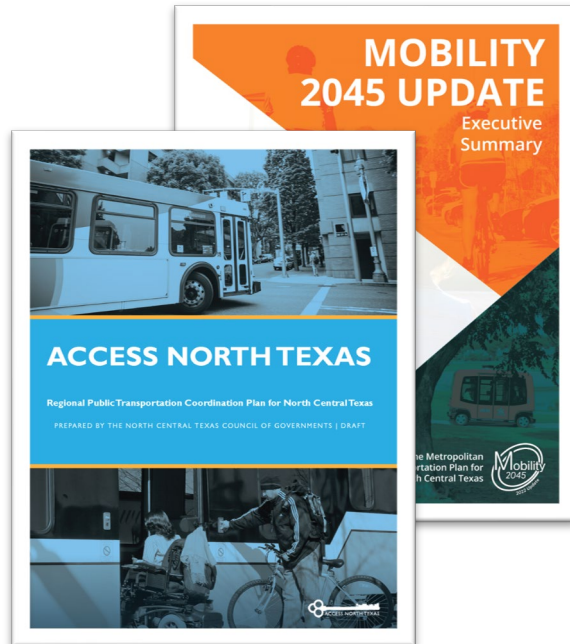
How NCTCOG is Using the Data

1

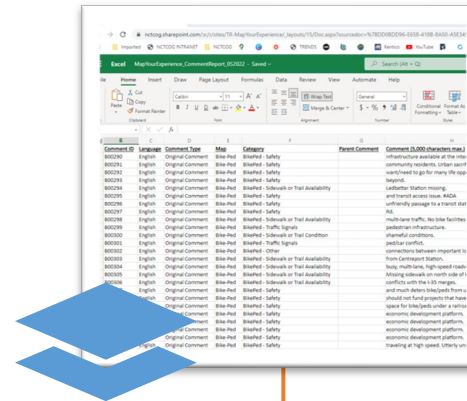


Available for General Public

2



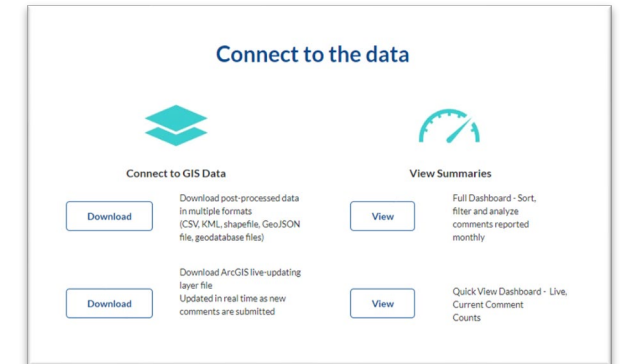
3



To NCTCOG Staff

Incorporated into ongoing planning, project development, and programs

4

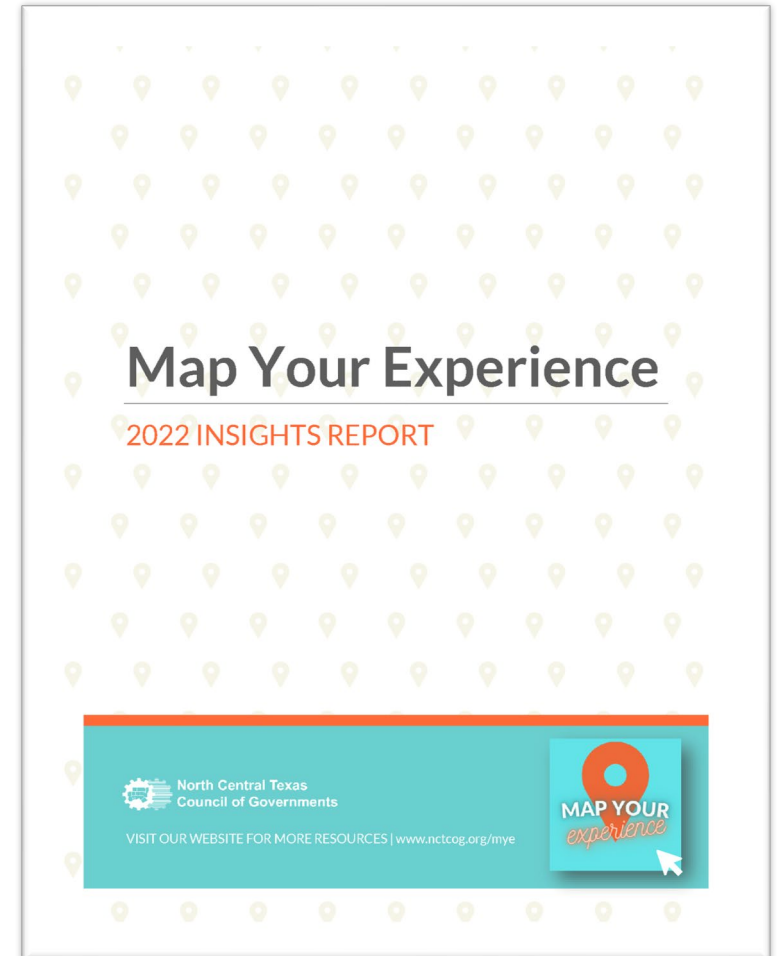


Available for Partners

Data available online in various GIS and tabular formats

MYE 2022 Insights Report

- Read the [full report](#) online at the Map Your Experience website
Visit www.nctcog.org/mapyourexperience and scroll down to “Summaries and Presentations”
- Using data between May 2020 – January 2022
- Utilized insights for our Mobility 2045 – 2022 Update and our transit plan, Access North Texas



Summary of Comments Received

KEY INSIGHTS

1

Accessibility issues of impedance, or barriers to traveling, are of greater concern for the bicycle/pedestrian mode than transit or roadway.

2

Key bicycle and pedestrian needs are:
wider sidewalks | completion of sidewalks
protected bike lanes | safer speeds on non-arterial roads | crosswalks across arterials

3

Key transit needs are:
1) increased frequency and coverage in existing transit service areas
2) expansion of service to new areas

4

For roadways, traffic and safety are the top comments, frequently showing up in areas with poor level of service.

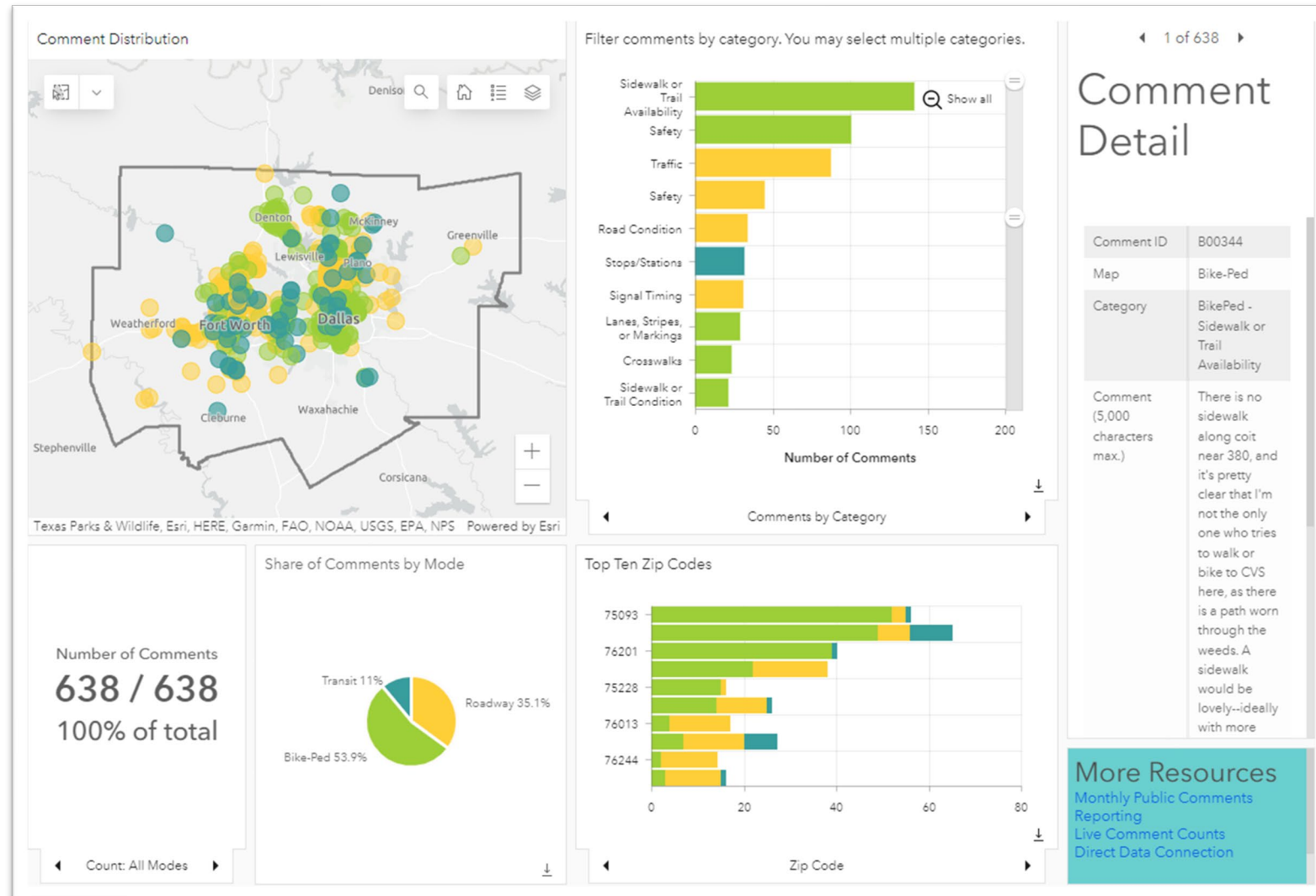
5

In many cases, roadway comments are not concerned with speeds, but rather with the safety of merging onto a road, poor visibility, or blind spots.



nctcog.org/MapYourExperience

Summary of Comments Received



- Bike/ped issues make up over half the comments
- Accessibility a major concern for bike/ped, transit
- Roadway issues make up a third of comments

What We're Doing

Issues Identified	Action
Narrow and incomplete sidewalks	Regional sidewalk GIS data
Accessibility issues for bicyclists and pedestrians; lack of protected bike lanes; high speeds on non-arterial roads; lack of crosswalks across arterials	Pedestrian Safety Action Plan updates
Transit network frequency and coverage	Transit studies; maps and population data
Unsafe merges; poor visibility for turning; blind spots at intersections	Traffic Incident Management Program; Roadway Safety Improvement Program; Regional Safety Information System
Poor levels of service (high congestion)	Intersection improvements; freeway/arterial bottleneck improvements

What's Next

- Continue analysis of comments entered on Map Your Experience
- Provide timely information to our program areas
- Incorporate new feedback into subsequent NCTCOG plans
- Keep the comments coming!

Contact Us



Martin Bate

Transportation Planner II

mbate@nctcog.org | 817-608-2349



Amy Johnson

Senior Transportation Planner

ajohnson@nctcog.org | 817-704-5608