



Green Asset Management

JoEtta Dailey

Watershed Protection Manager

Environmental Services & Sustainability

16 May 2023

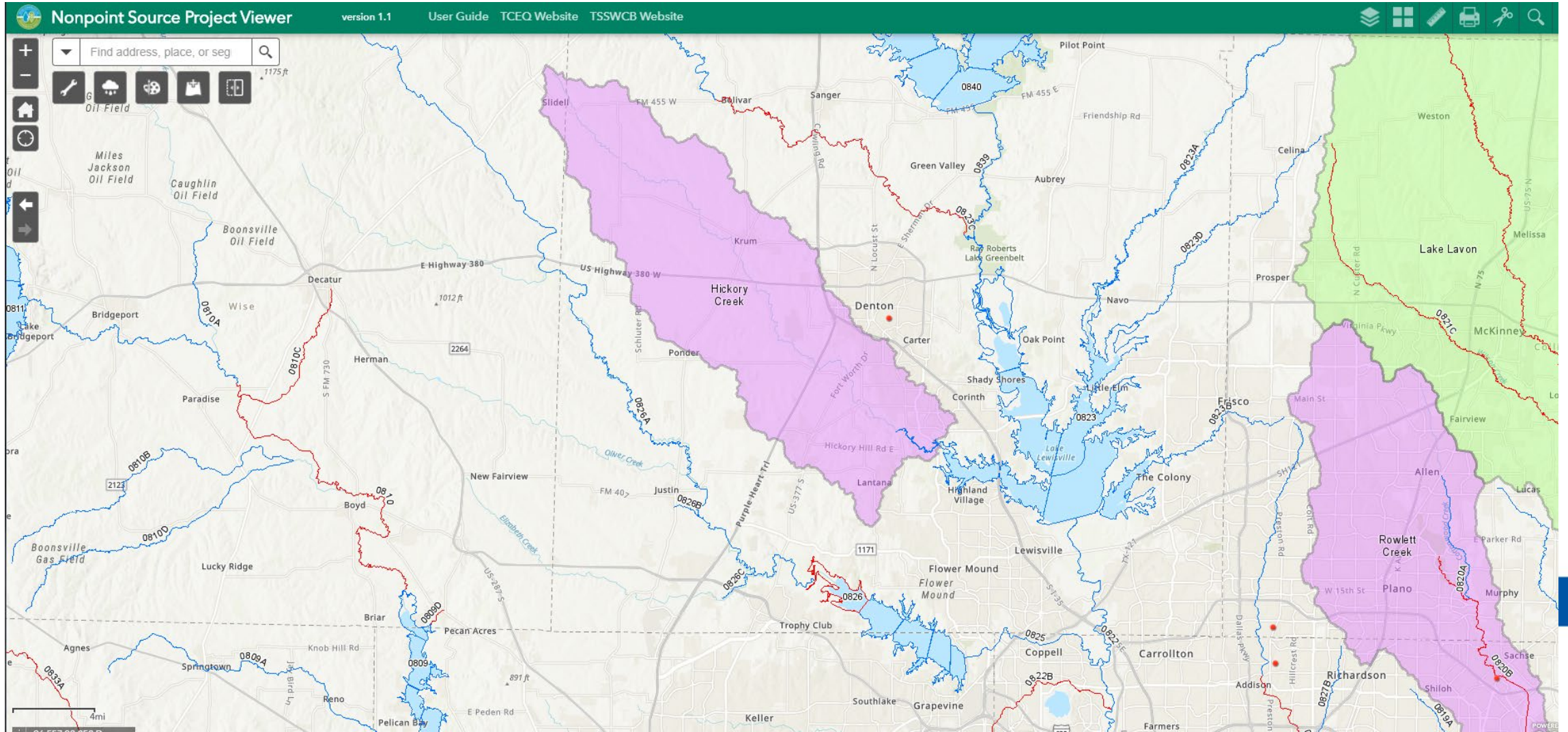


MS4 Permit

Post Construction

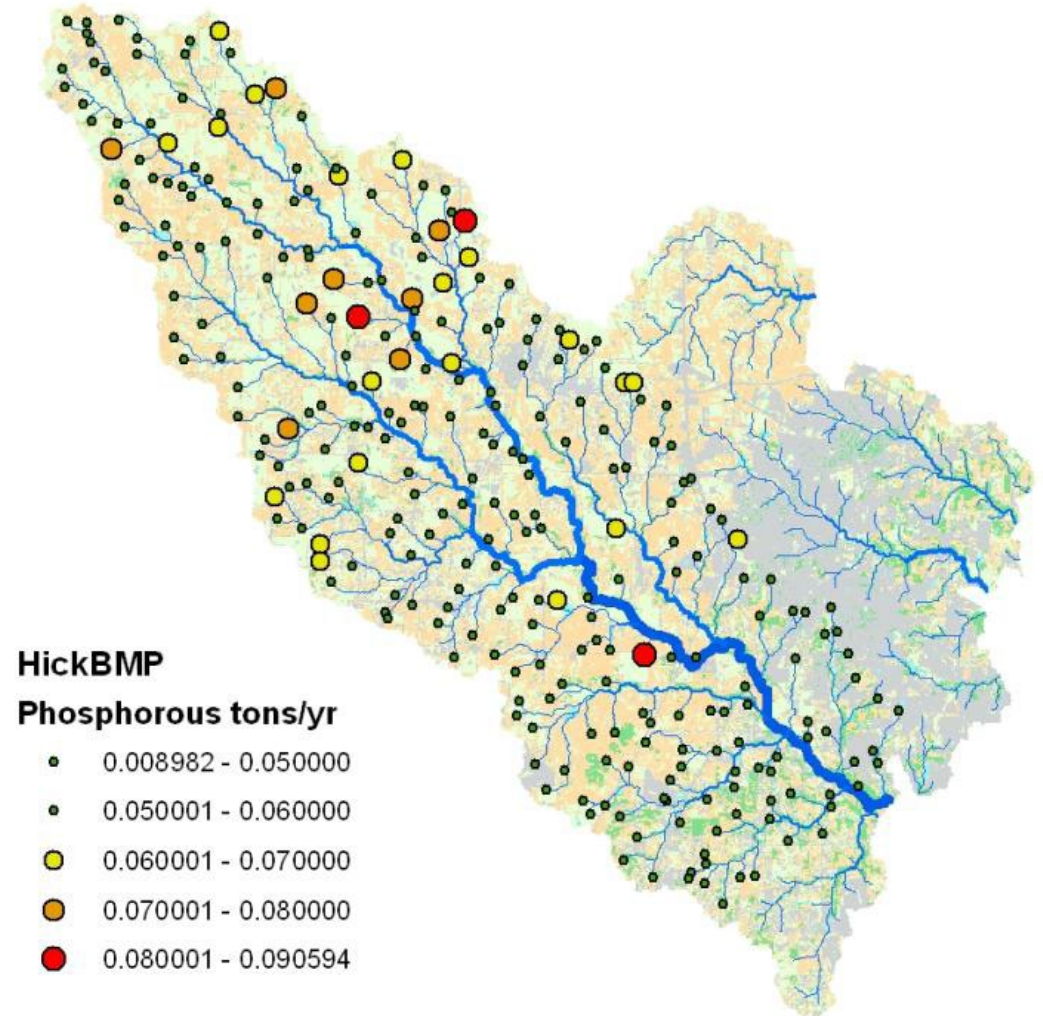
- Inspections - Permittees who operate Level 4 small MS4s shall develop and implement an inspection program to ensure that all post construction stormwater control measures are operating correctly and are being maintained as required consistent with its applicable maintenance plan. For small MS4s with limited enforcement authority, this requirement applies to the structural controls owned and operated by the small MS4 or its contractors that perform these activities within the small MS4's regulated area.

Hickory Creek Watershed Protection Plan



Phosphorus Nitrogen Sediment

Land Use	Annual Loads per Unit Area from each Land Use (pounds/acre/yr)		
	Sediment	Phosphorus	Nitrogen
Urban	161.49	1.34	3.66
Agriculture	123.12	1.96	3.75
Rangeland	55.32	0.27	1.87
Forest	21.41	0.09	0.71



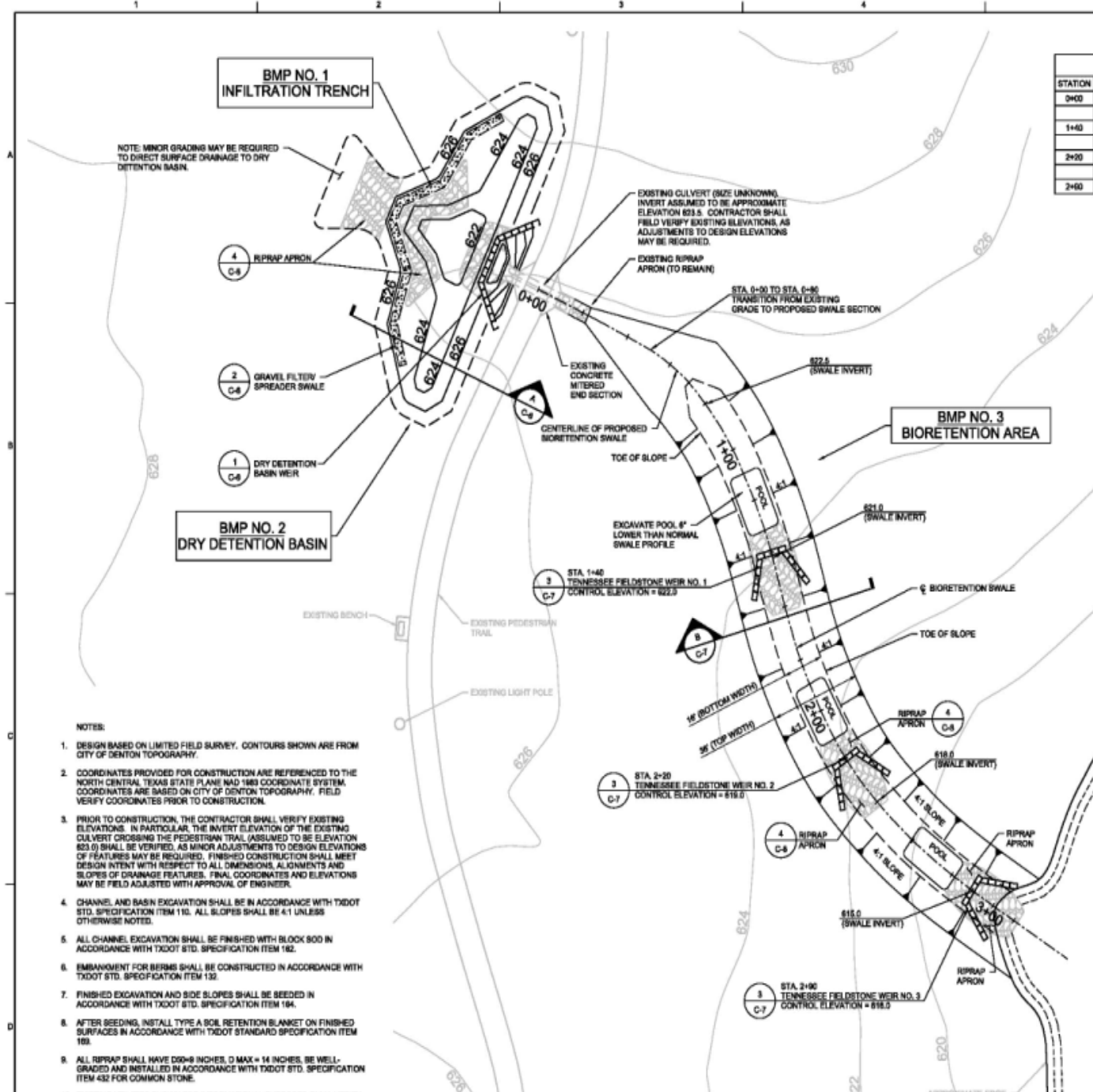
Post Construction Best Management Practices

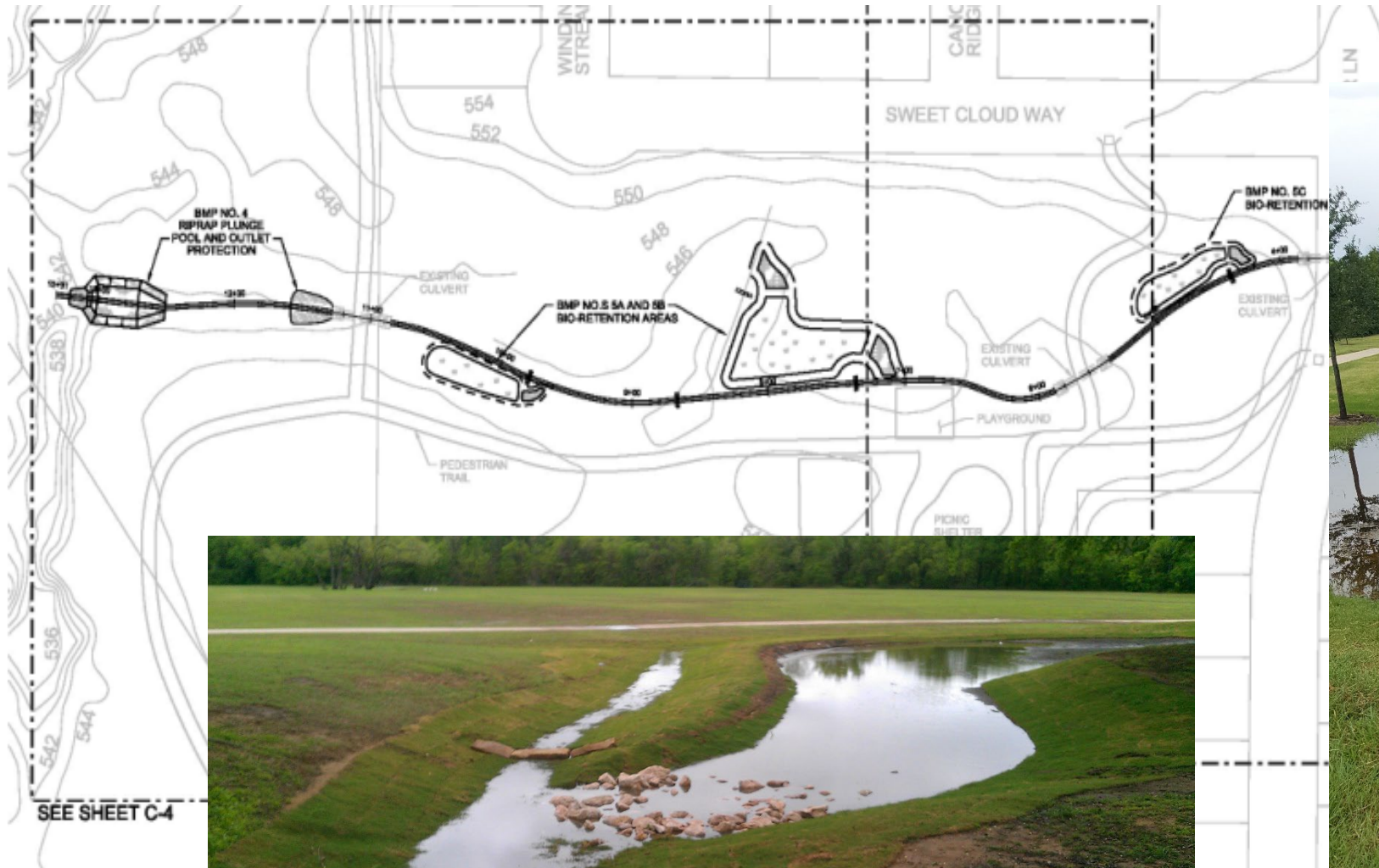
Benefits

- Improve water quality
- Reduce localized flooding
- Increase ecosystem services

Project Focus

- Bioretention
- Rain Gardens
- Permeable Pavement













Software

- Map inventory - ArcMap integration
- Inspection software - CloudCompli
- Asset Management software - Cartegraph

Inspections



- Dashboard
- My Schedule
- Construction
- Industrial & Commercial Sites
- Municipal Fixed Assets
- Post-Construction
- Education
- Investigations
- Enforcement
- Deficiencies
- Analytics
- Weather Summary
- Help

CONSTRUCTION

[BULK TAG EDITOR](#) [BULK EXPORT](#) [?](#)



Sites

[X CLEAR FILTERS](#) [^](#)

Search Sites Status **1** Site Profiles Select Site Tags
Matches Any

Show **50** entries [Copy to Clipboard](#) [Download CSV](#) [Customize Columns](#) [+ Add Site](#)

Site Name	Latest Reports	Site Tags	Status	Site Profile	Estimated Site Disturbed Acreage
-----------	----------------	-----------	--------	--------------	----------------------------------

Asset Management

The screenshot displays the Cartegraph Asset Management web application. The top navigation bar includes 'Cartegraph', 'Requests', 'Work', 'Assets' (highlighted), 'Resources', and 'Reports'. Below this is a breadcrumb trail: 'Home > Assets'. The left sidebar, titled 'Assets', shows a list of layers: 'Active Outlets' (1678), 'Active Storm Channels' (3008), and 'Active Storm Basins' (131). The main map area shows a street map of Denton, Texas, with numerous red circular markers representing assets and green lines representing storm basins. A search bar at the top of the map area contains the text 'Search by address'. Below the map is a data table with the following columns: Asset Type, ID, Street, Estimated ..., Inspected ..., and Criticality Fa... The table lists three storm basins:

Asset Type	ID	Street	Estimated ...	Inspected ...	Criticality Fa...
Storm Basin	B1301				
Storm Basin	B2101				
Storm Basin	B2501				



Questions?

JoEtta Dailey

Watershed Protection Manager

Environmental Services & Sustainability

940-349-7153

Joetta.Dailey@cityofdenton.com

