

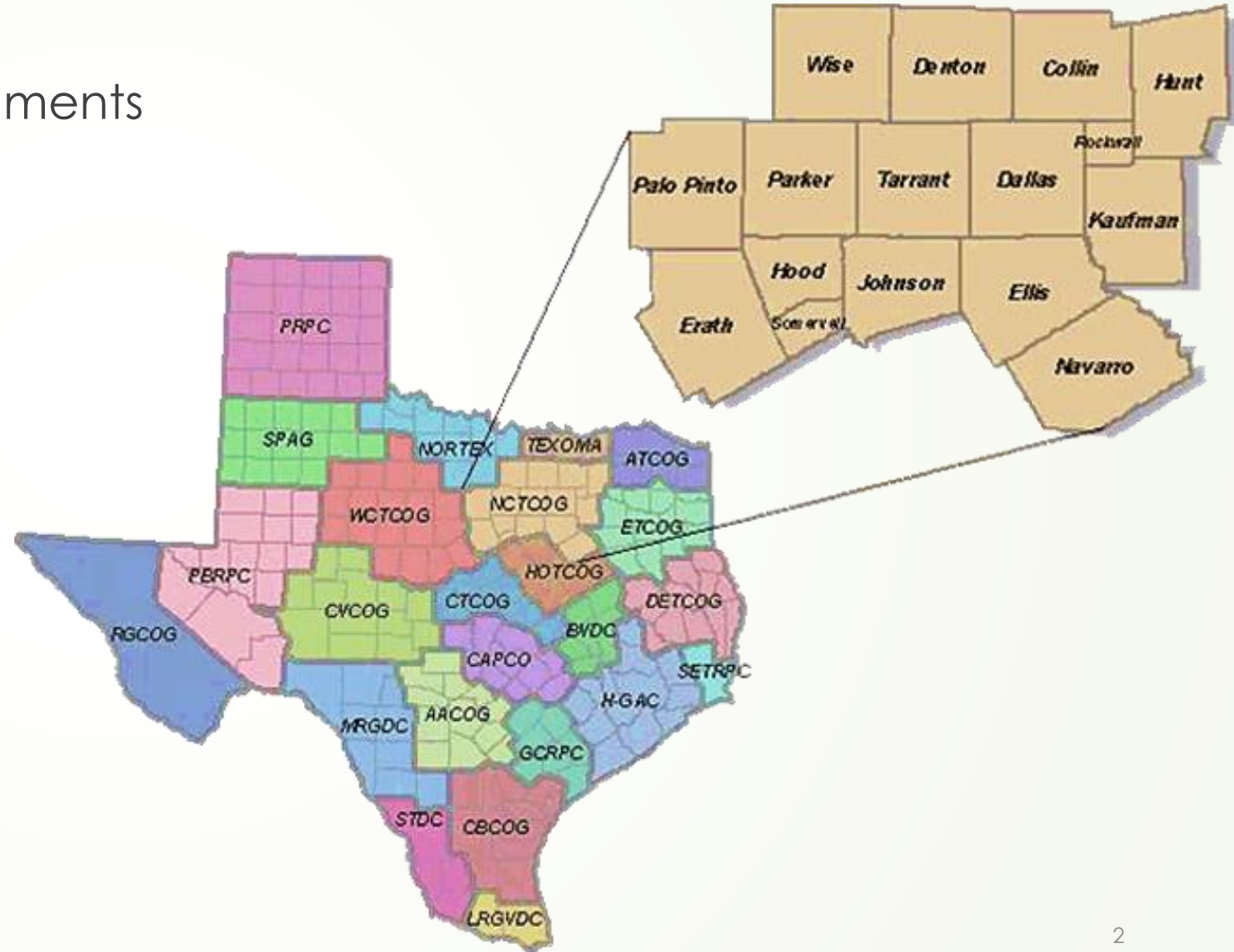


# Discouraging Avian Feeding Webinar

Hannah Allen, Environment and Development Planner II  
North Central Texas Council of Governments

# What is the North Central Texas Council of Governments?

- Voluntary association of local governments
- Established in 1966
- Assists local governments in:
  - Planning for common needs
  - Cooperating for mutual benefit
  - Recognizing regional opportunities
  - Resolving regional problems
  - Making joint decisions

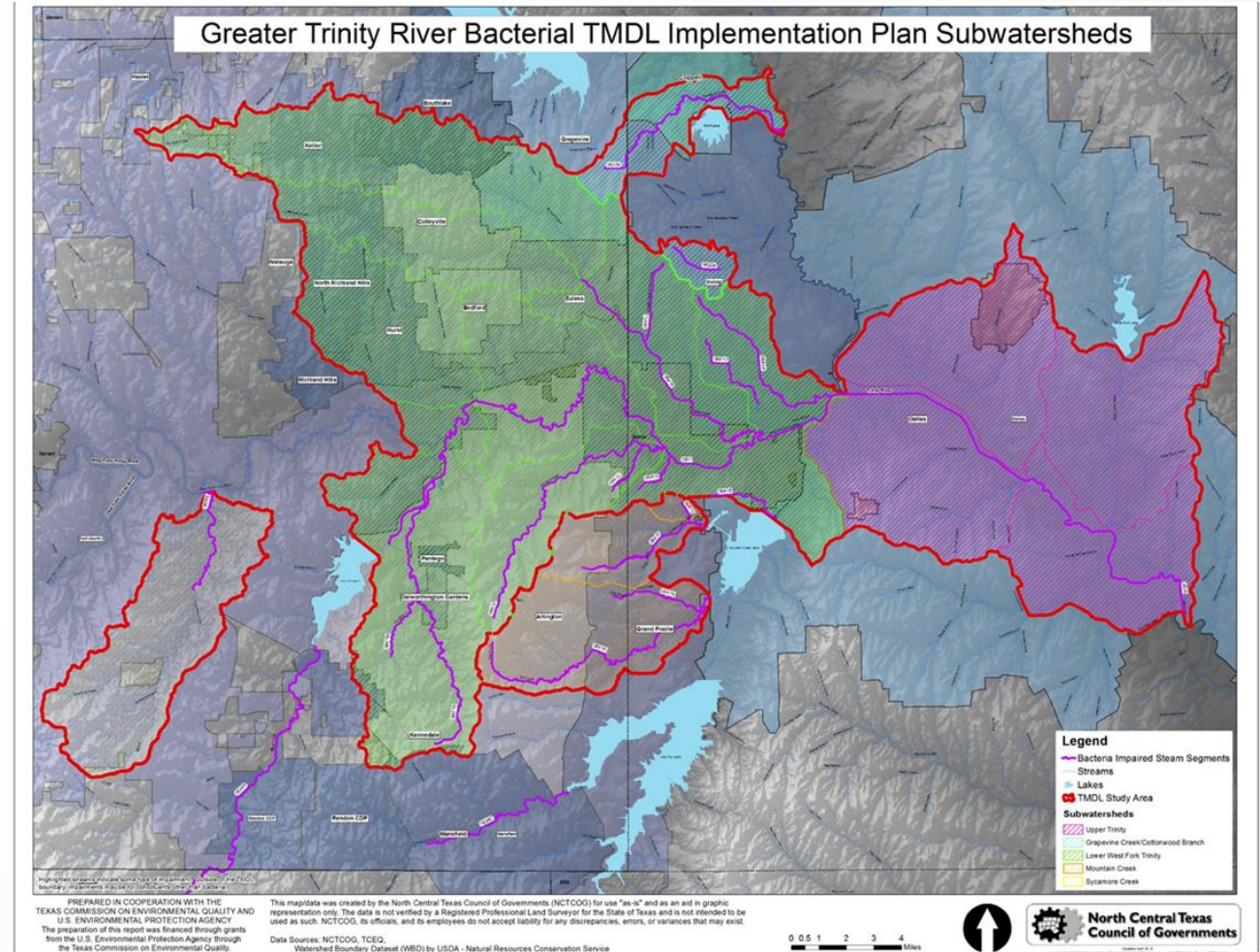


# Bacteria Impairments in the DFW Metroplex


- What does impairment mean?
  - A waterway is not meeting state water quality standards for its designated use.
- What could be causing the impairment?
  - Pet waste, sanitary sewer overflows, agricultural practices, wastewater treatment plants, illicit discharges, onsite sewage facilities (septic systems), and wildlife waste
- What is a total maximum daily load (TMDL)?
  - A budget for a pollutant that estimates the amount of a pollutant that a waterway can receive and still support its designated use.

# Greater Trinity River Bacterial TMDL Implementation Plan Subwatersheds

- Upper Trinity River Segment 0805,
- Elm Fork Tributaries of Grapevine Creek and Cottonwood Branch
- Lower West Fork Trinity River Segment 0841 and 11 of its tributaries,
- Upstream of Mountain Creek Lake Segments 0841F, 0841K, 0841N, 0841Q, and 0841V
- Sycamore Creek Segment 0806E



# How is NCTCOG working with local governments to address TMDLs?



Approved by the Commission: December 11, 2013  
Approved by the Coordination Committee: July 11, 2012  
Revised by the Coordination Committee: June 13, 2019

## Implementation Plan Twenty-Two Total Maximum Daily Loads for Bacteria in the Greater Trinity River Region

**Upper Trinity River**  
Segment 0805  
Assessment Units 0805\_03 and 0805\_04

**Cottonwood Branch and Grapevine Creek**  
Segments 0822A and 0822B  
Assessment Units 0822A\_02 and 0822B\_01

**Lower West Fork Trinity River**  
Segments 0841, 0841B, 0841C, 0841E, 0841G, 0841H, 0841J, 0841L, 0841M, 0841R, 0841T, and 0841U  
Assessment Units 0841\_01, 0841\_02, 0841B\_01, 0841C\_01, 0841E\_01, 0841G\_01, 0841H\_01, 0841J\_01, 0841L\_01, 0841M\_01, 0841R\_01, 0841T\_01, and 0841U\_01

**Mountain Creek Lake Tributaries**  
Segments 0841F, 0841K, 0841N, and 0841V  
Assessment Units 0841F\_01, 0841K\_01, 0841N\_01, and 0841V\_01


**Sycamore Creek**  
Segment 0806E  
Assessment Unit 0806E\_01

- Through the Implementation Plan for Twenty-Three Total Maximum Daily Loads for Bacteria in the Greater Trinity River Region, NCTCOG works with local governments to implement best management practices (BMPs) to reduce the sources of bacteria
  - Examples of BMPs:
  - Participation in regional initiatives,
  - Education and outreach, and
  - Ordinance, guideline, or management plan adoption.
- This Implementation Plan also guides the projects and workshops selected by the TMDL Coordination Committee. This document was recently updated to include North Fork Fish Creek and is now ADA compliant!

# Rachel Richter

Wildlife Biologist

Texas Parks & Wildlife

A close-up photograph of a person's hand holding a piece of bread, which a mallard duck is pecking at. Several other ducks are visible in the greenish water of a pond. The scene is set outdoors near a concrete edge.

# Negative Impacts of Feeding Waterfowl

TEXAS  
PARKS &  
WILDLIFE

Rachel Richter  
Urban Wildlife Biologist  
Texas Parks and Wildlife

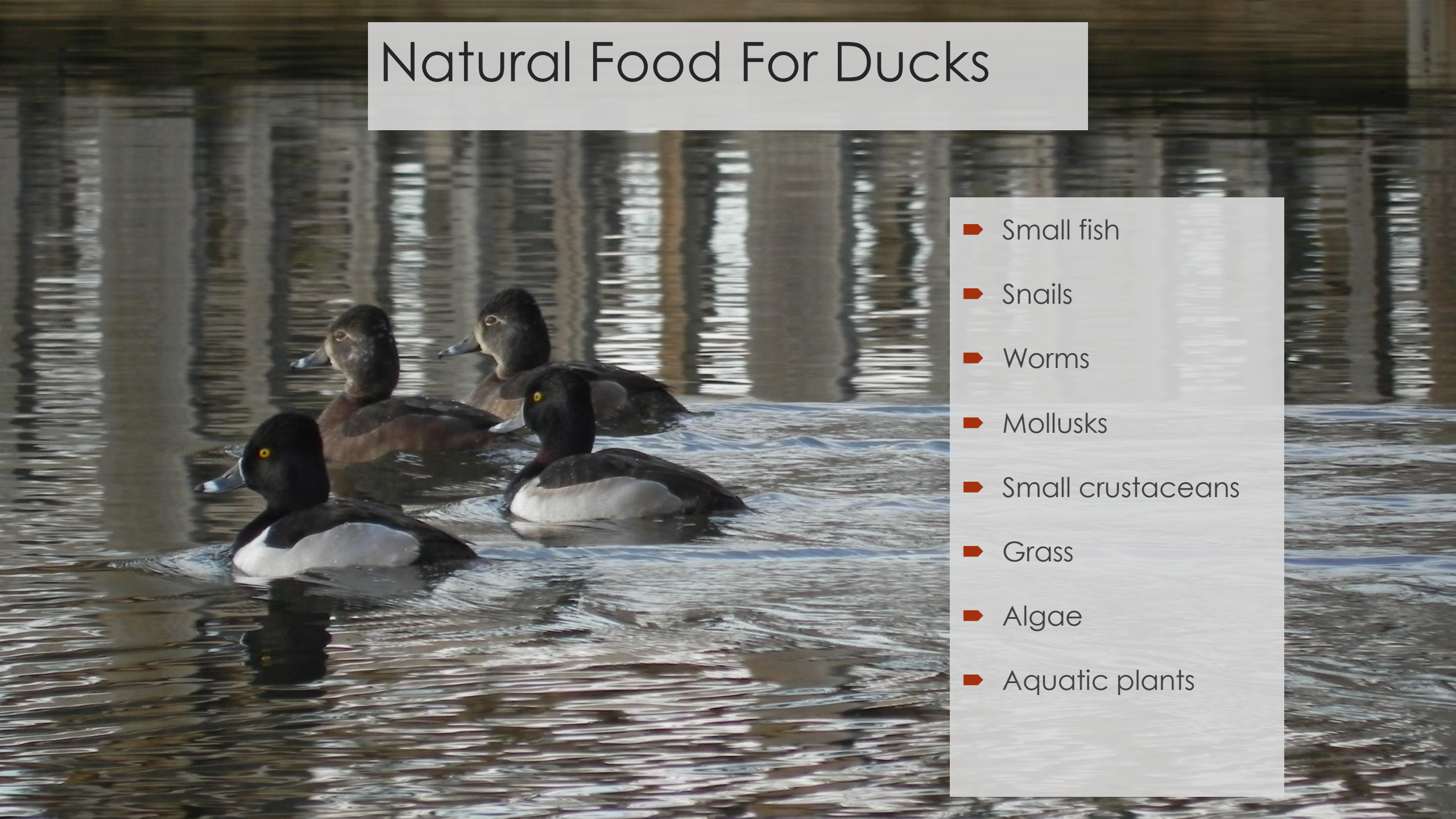
Ducks and geese should NOT eat...





# Natural Food For Ducks

- Small fish
- Snails
- Worms
- Mollusks
- Small crustaceans
- Grass
- Algae
- Aquatic plants



Human food is not  
healthy for wildlife



# Increased Disease Spread



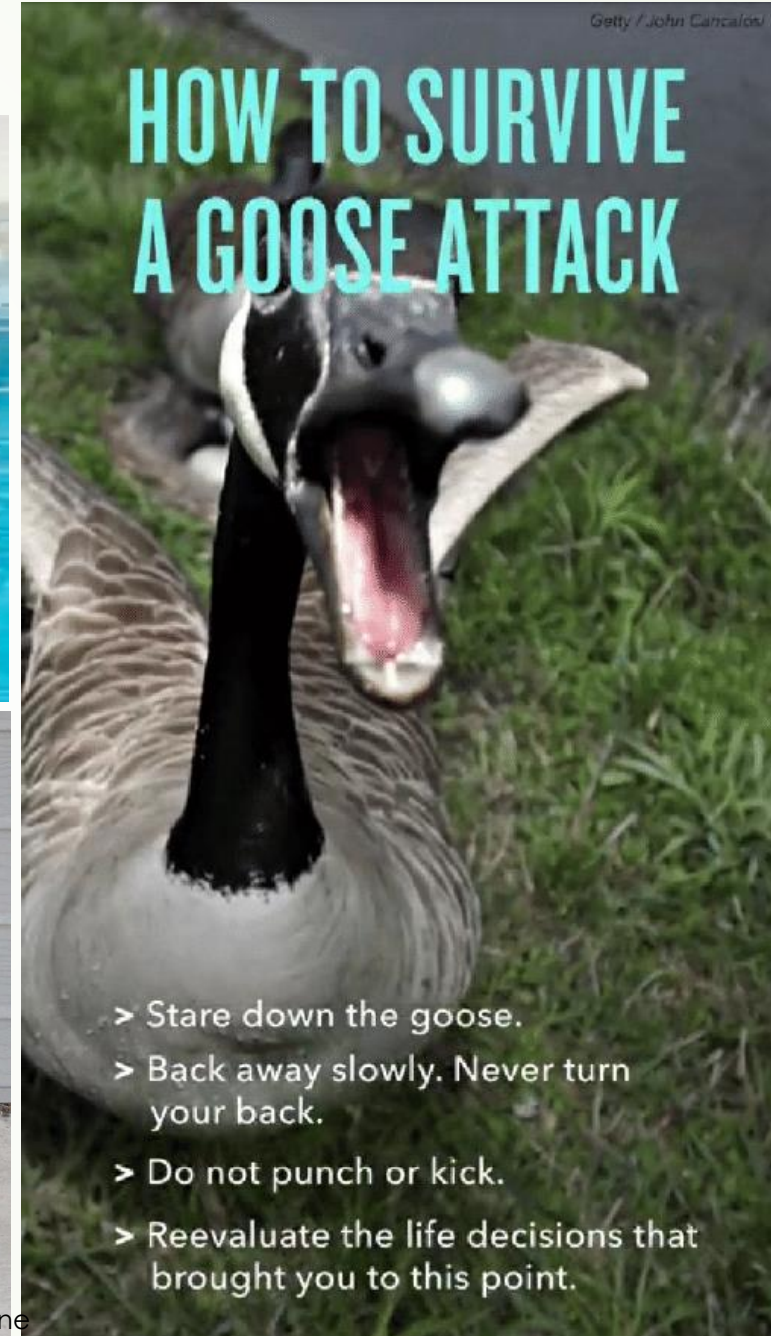
# Habituation



Photo Credit:



Photo Credit: pbyrne



Getty / John Cancalosi

## HOW TO SURVIVE A GOOSE ATTACK

- > Stare down the goose.
- > Back away slowly. Never turn your back.
- > Do not punch or kick.
- > Reevaluate the life decisions that brought you to this point.

# Invasive Species



# Non-target Species



Photo Credit: Vermin



# Habitat Degradation



# Water Quality



Photo Credit: KSAN





# Management Options

- Outreach and education
- Feeding ordinances



# But what about “healthy” foods?



# Management Options for Non-native Waterfowl

- No state regulations for non-native waterfowl
- Oiling or addling eggs
- Trap and remove



# Alternatives

- Birdwatching
- Contribute to citizen science projects
  - iNaturalist, eBird
- Photography
- Learn about wildlife
- Improve your local park



# Promote Healthy Habitats



A close-up photograph of a person's hand holding a piece of bread, which a mallard duck is pecking at. The duck is in the foreground, facing the hand. In the background, several other ducks are swimming in a pond with greenish water. A concrete ledge is visible in the lower-left corner.

Questions?

TEXAS  
PARKS &  
WILDLIFE

Rachel Richter  
Urban Wildlife Biologist  
Texas Parks and Wildlife

# Mark Enders

Watershed Program Manager

City of New Braunfels





# Avian Feeding & Management New Braunfels, TX

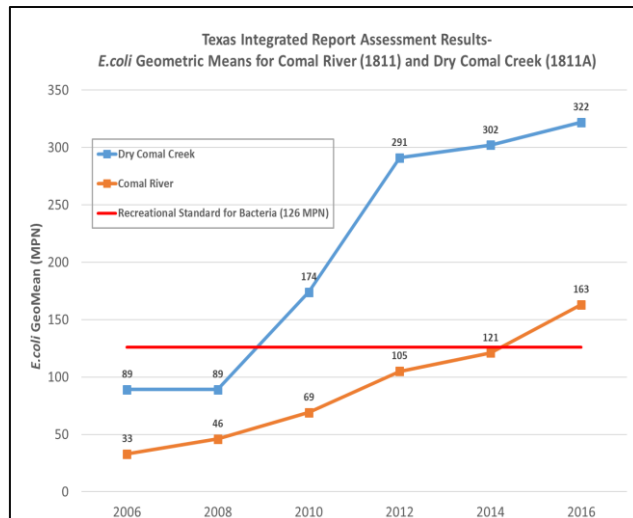
Mark Enders  
Watershed Programs Manager  
City of New Braunfels



# Why Urban Wildlife Mgmt in NB?

**Negative impacts associated with overabundant urban wildlife:**

- 1) Water quality concerns**
- 2) Deer/ traffic collisions**
- 3) Wildlife Health**



## Annual Deer/ Auto Collision Reports\*

<b>2015</b>	<b>498</b>
<b>2016</b>	<b>644</b>
<b>2017</b>	<b>528</b>
<b>2018</b>	<b>632</b>



# CoNB Wildlife Feeding Ordinance

- **In Sept 2018, NB City Council passed and approved an ordinance prohibiting the feeding of wildlife within the City limits (Ord No. 2018-58, City Code Section 82-25)**
- **The ordinance became effective March 10, 2019**
- **The ordinance prohibits the feeding of all wildlife on both public and private property**
- **1<sup>st</sup> offense: warning, 2<sup>nd</sup> offense: fines \$75-500**
- **Exceptions: bird feeders hung at least 5ft above ground & Hunting Land Permit holders**
- **Enforcement: Park Rangers & Animal Control (Code Compliance)**

# Wildlife Feeding Ordinance Signage



-Signage is funded in part by the US Environmental Protection Agency through the Texas Commission on Environmental Quality

# Non-Native Waterfowl Mgmt

Since late 2018:

- 145 non-native waterfowl have been trapped and removed from Landa Park
- 97 non-native waterfowl eggs have coated with vegetable oil



# Outreach and Education



- Local Newspapers
- Local NB Radio
- Television News Stations
- Wildlife Mgmt Workshops w/ TPWD
- Annual Summary, Infographic

**SPRINGS, RIVERS, WATERSHED. OUR RESPONSIBILITY.**  
NEW BRAUNFELS WATERSHED MANAGEMENT

Be **Watershed Wise!**  
Learn how to protect our springs, rivers, and the Dry Comal Creek and Comal River Watershed

**What is a Watershed?**

A watershed is an area that channels water traveling across the land surface into bodies of water, such as rivers and creeks, that eventually flow to lakes and oceans.

Small watersheds add up to form a larger watershed.

Our schools, parks, businesses and homes are all located within a watershed.

**Dry Comal Creek and Comal River Watershed**

**SPRINGS, RIVERS, WATERSHED. OUR RESPONSIBILITY.**  
NEW BRAUNFELS WATERSHED MANAGEMENT

Learn how to protect our springs, rivers, and the Dry Comal Creek and Comal River Watershed

[nbtexas.org/wpp](http://nbtexas.org/wpp)

Learn more and get involved at: [www.nbtexas.org/wpp](http://www.nbtexas.org/wpp)

**City begins enforcing wildlife ordinance**  
Warnings, fines go into effect Sunday

By Will Wright  
TheHerald-Zeitung

On Sunday, the city of New Braunfels will begin enforcement of the ordinance prohibiting the human feeding of wildlife in the city.

Over the past several months, city officials conducted public awareness meetings on the negative effects of human feedings: overabundant numbers of deer and non-native species of ducks and geese in the city.

Discouraging residents at feeding the birds.

CITY

**Information on city's wildlife feeding ordinance posted online**

From Staff Reports

The city of New Braunfels is providing information on wildlife feeding ordinance which goes into effect on March 27th. The ordinance prohibits feeding of wildlife in city limits. For more on the intent and details of the ordinance visit [www.nbtexas.org/wpp](http://www.nbtexas.org/wpp).

The public is invited to attend the meeting on Wednesday, Feb. 13, 2019, at city hall, 550 Landa Street in New Braunfels.

**SPRINGS, RIVERS, WATERSHED. OUR RESPONSIBILITY.**  
NEW BRAUNFELS WATERSHED MANAGEMENT

Funded in part by the EPA through the TCEQ

# Outreach and Education

- Educational Postcards & Door Hangers



## Watershed Educational Video

- Production to be finalized in August/ Sept 2020. Focuses on wildlife feeding.
- To be shown at two local movie theaters prior to each movie for 10 weeks, website links will also be included in theater email marketing campaigns
- Will be shown on New Braunfels local access channel, CoNB facilities with video screens, CoNB WPP website
- Shortened versions for social media distribution



# Outreach and Education (Cont')

- Presentations to students
- Science curriculum training for teachers
- Outreach at community events





# Questions?

**Mark Enders**  
**Watershed Programs Manager-**  
**[menders@nbtexas.org](mailto:menders@nbtexas.org)**  
**(830) 221-4639**

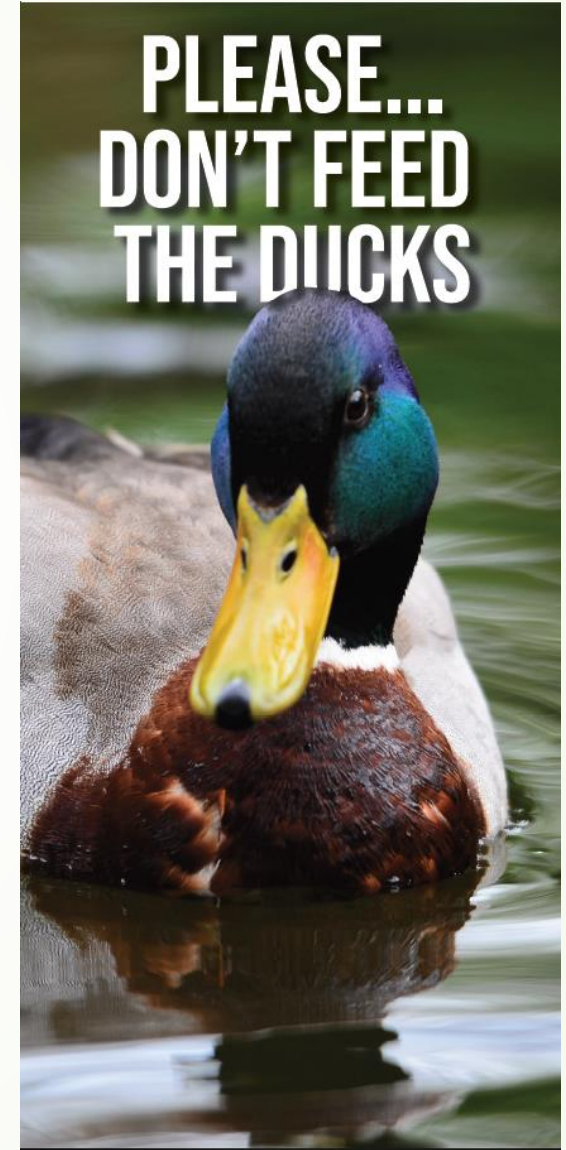


Questions?



# Available NCTCOG Resources for Discouraging Avian Feeding

- Template Signage
  - Social Media Toolkit
  - Template Flyers and Brochures
- These resources are available for download and use on the TMDL webpage: [www.nctcog.org/TMDL](http://www.nctcog.org/TMDL) under the Resources banner.



# Contact

## Hannah Allen

Environment and Development Planner II

[hallen@nctcog.org](mailto:hallen@nctcog.org)

817-695-9215

## Cassidy Campbell

Senior Environment and Development Planner

[ccampbell@nctcog.org](mailto:ccampbell@nctcog.org)

817-608-2368

## Tamara Cook

Senior Program Manager

[tcook@nctcog.org](mailto:tcook@nctcog.org)

817-695-9221

# Connect



Facebook.com/nctcogenv



@nctcogenv



nctcogenv



youtube.com/user/nctcoged



EandD@nctcog.org

www

nctcog.org/envir