



SAN ANTONIO
RIVER AUTHORITY

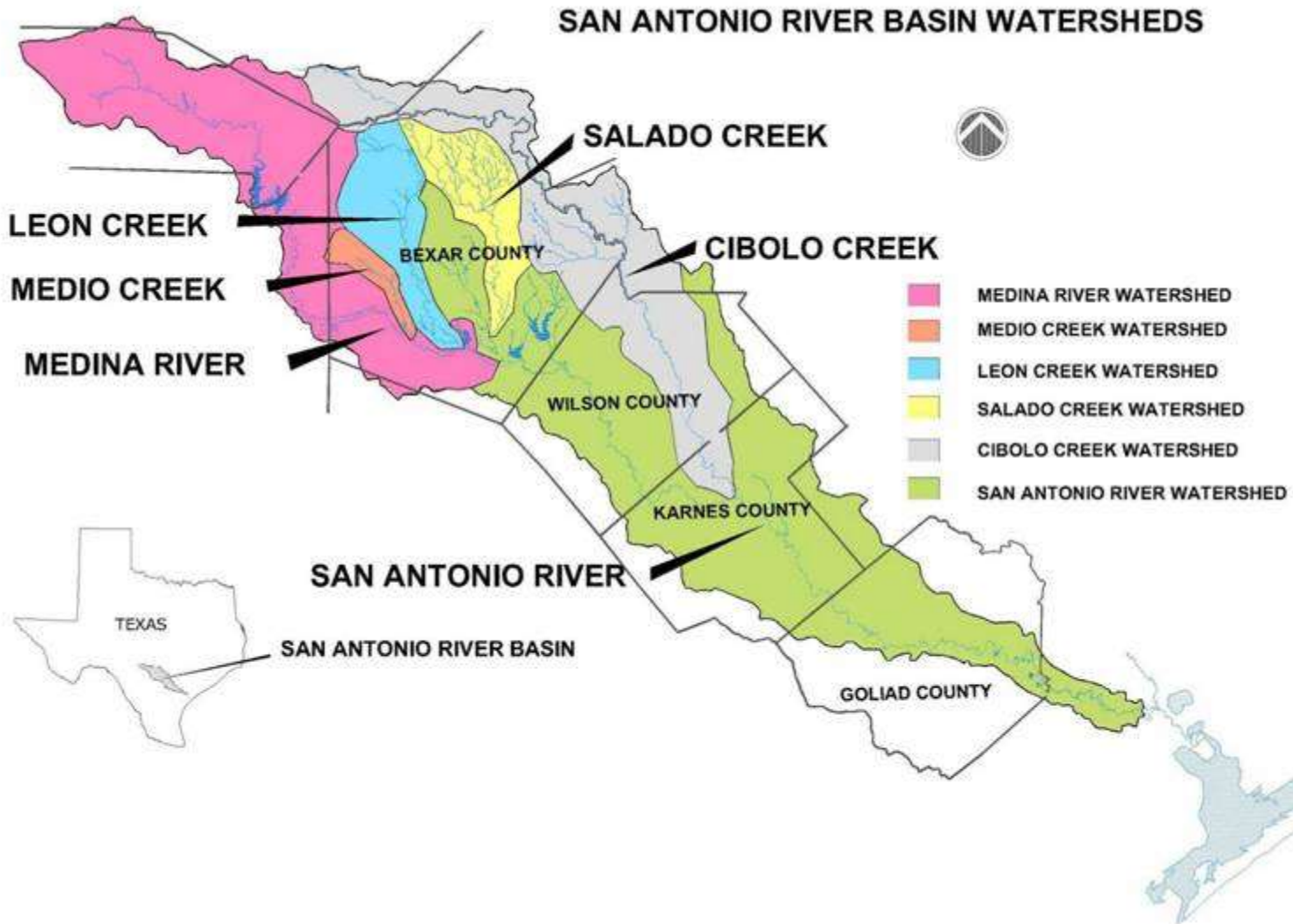
Leaders in Watershed Solutions

Getting Started with FEMA LOMR Delegation

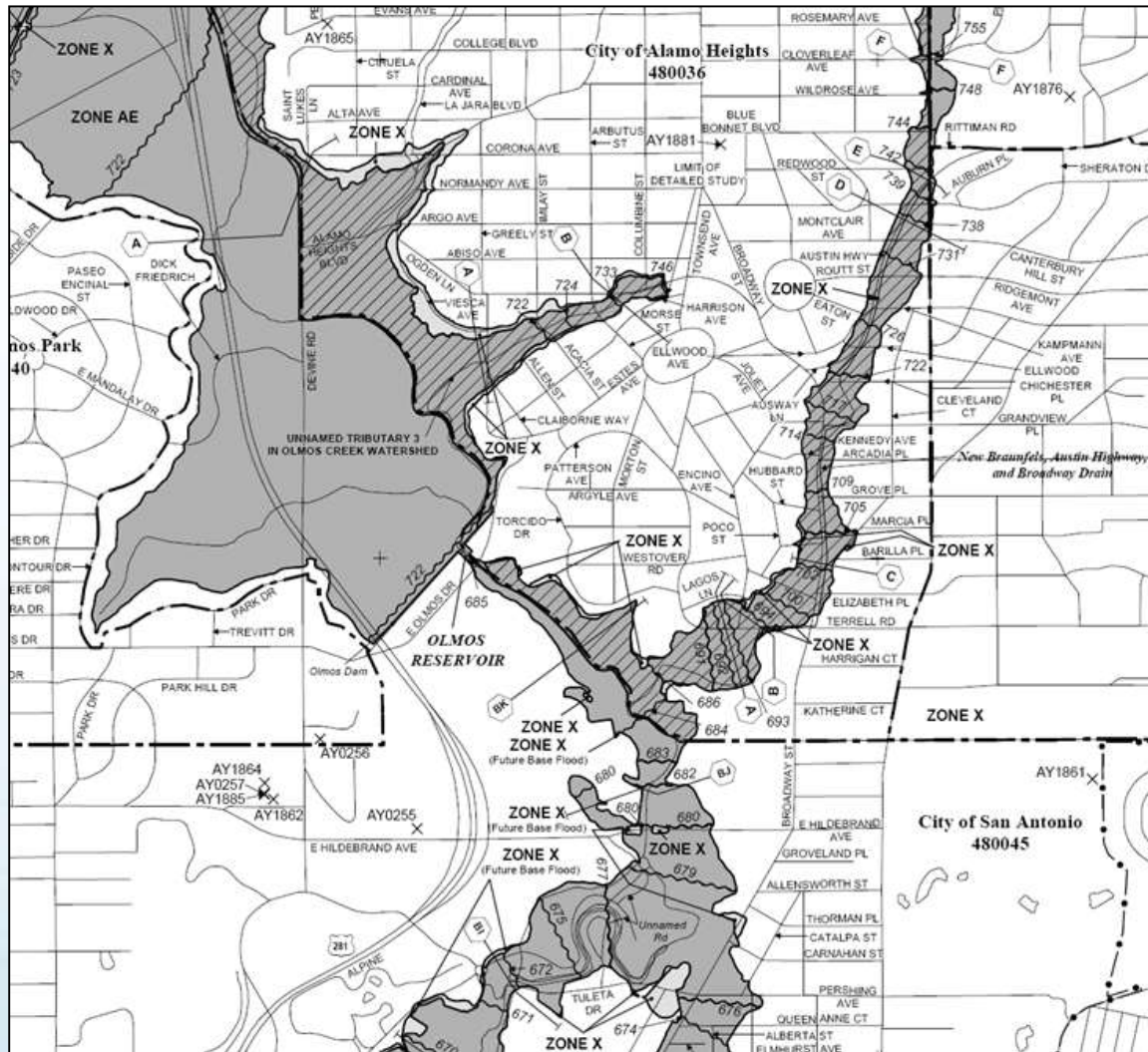
Overview

- About SARA
- Eligibility
- FEMA Application

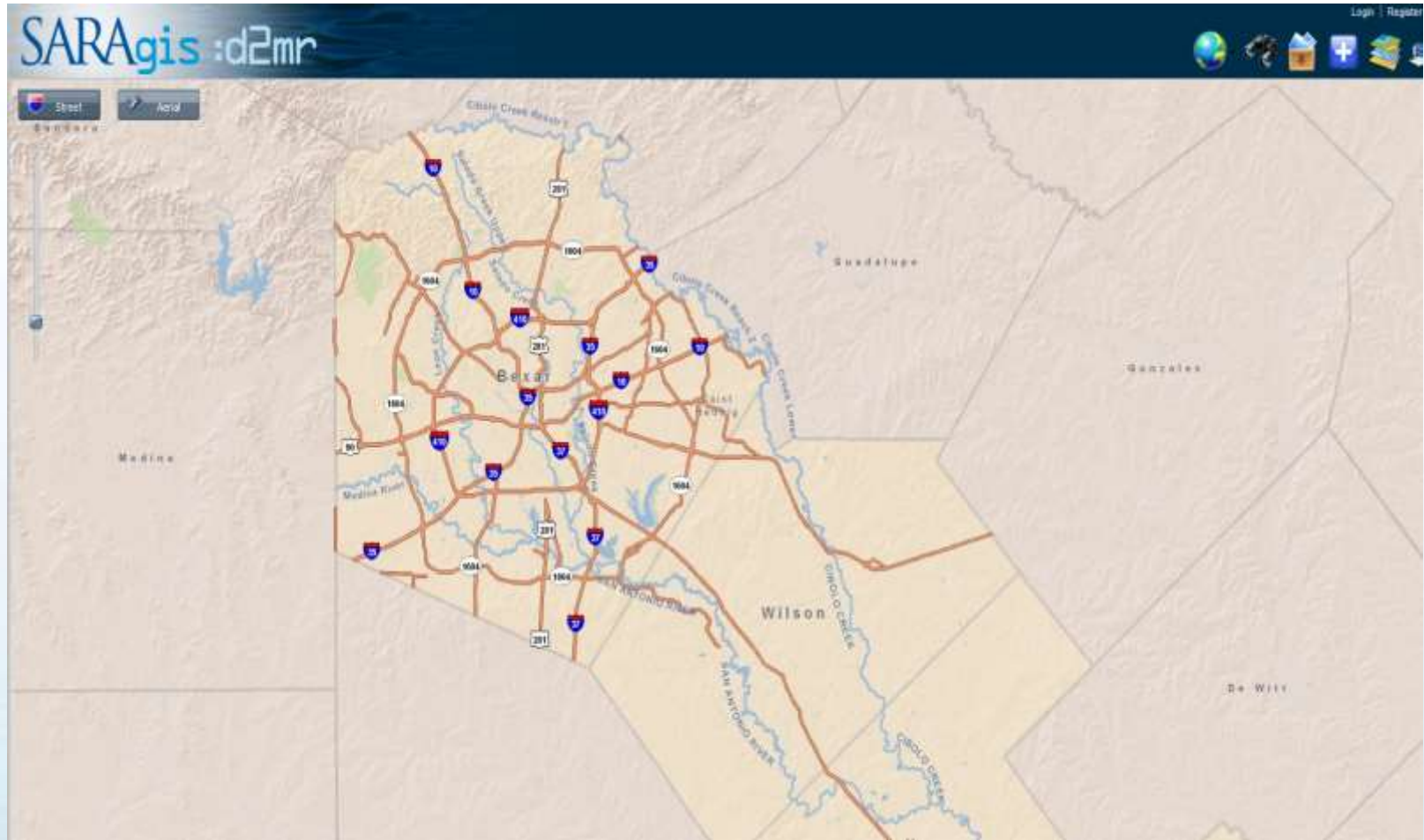
SARA Jurisdiction



DFIRM Map Modernization



Model Management



SARA Motivation

Protect Map Mod
Investment

Improve Local
Service/Partnerships

Coordinate
Floodplain Activities

Recipient of 2017 National FEMA CTP Recognition Award!

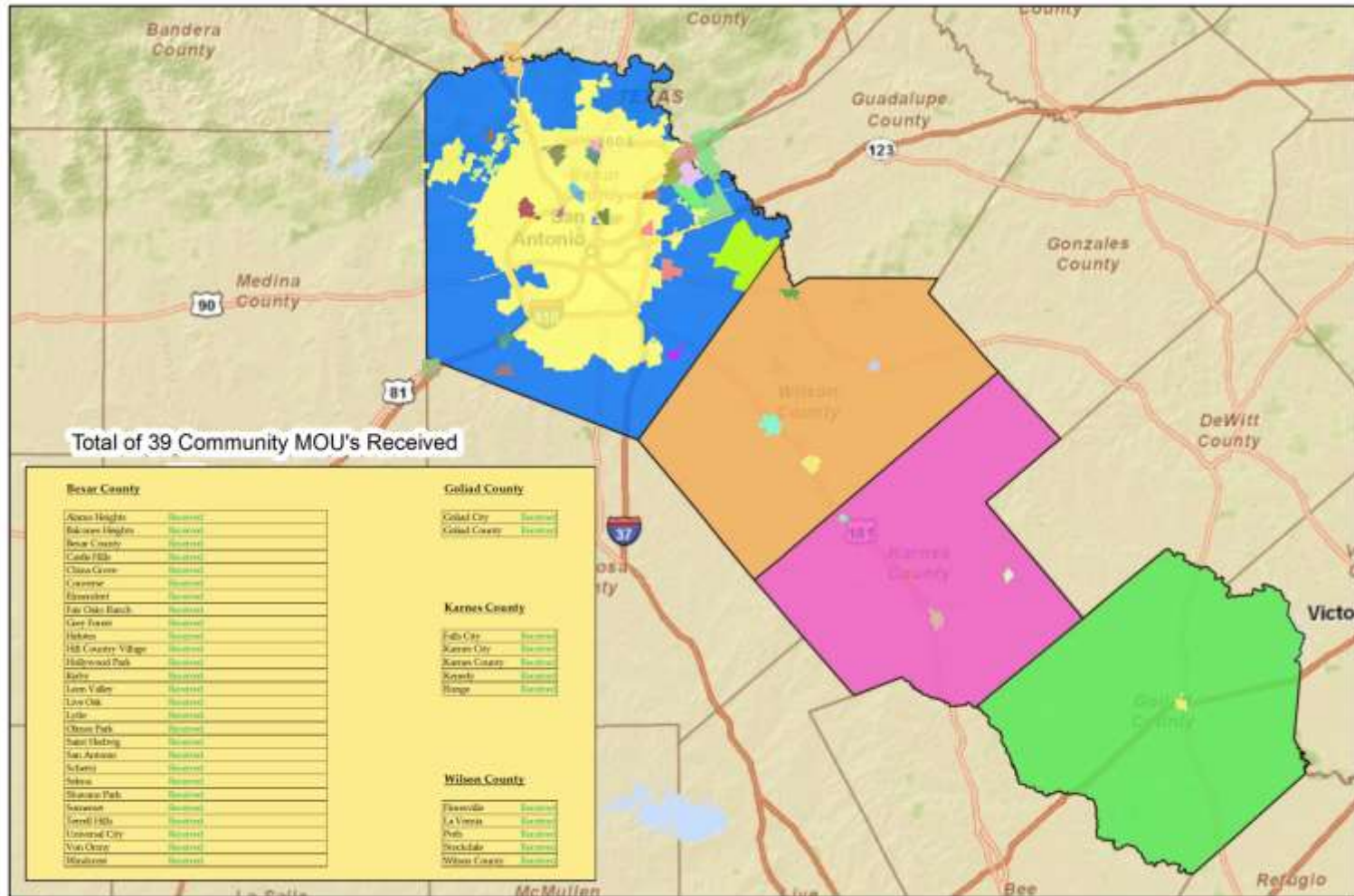


Eligibility

Capable CTP

Local Authority

39 MOUs



Memorandum of Understanding

- SARA Responsibilities
 - Provide current/accurate models via web
 - Provide technical support
 - Provide training (yearly workshops)
- Local Community Responsibilities
 - Follow San Antonio River Basin Modeling Standards

FEMA Application

- Business Case
- Funding
- Process & Outreach Plan
- Local Support

Business Case

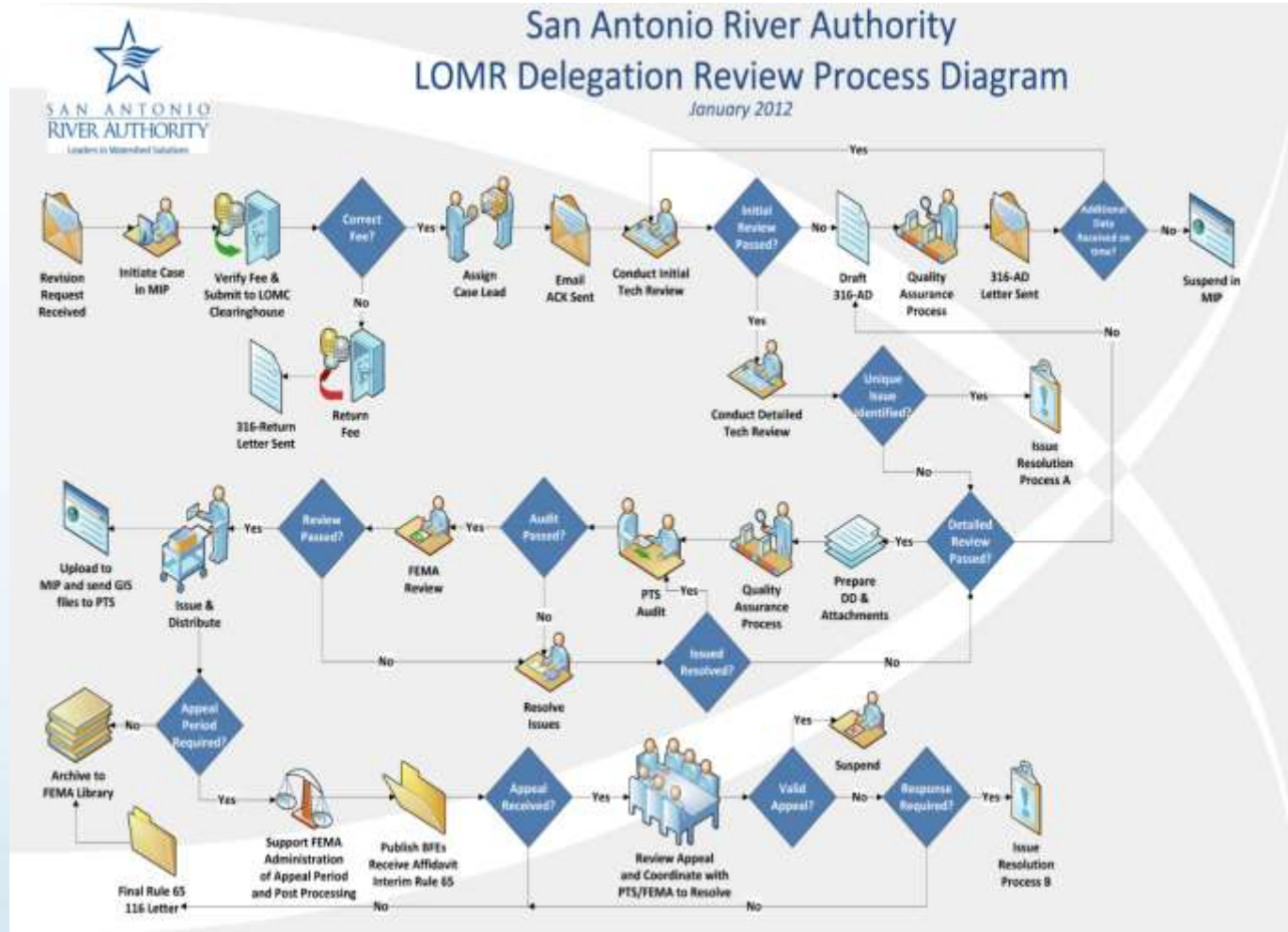


Funding

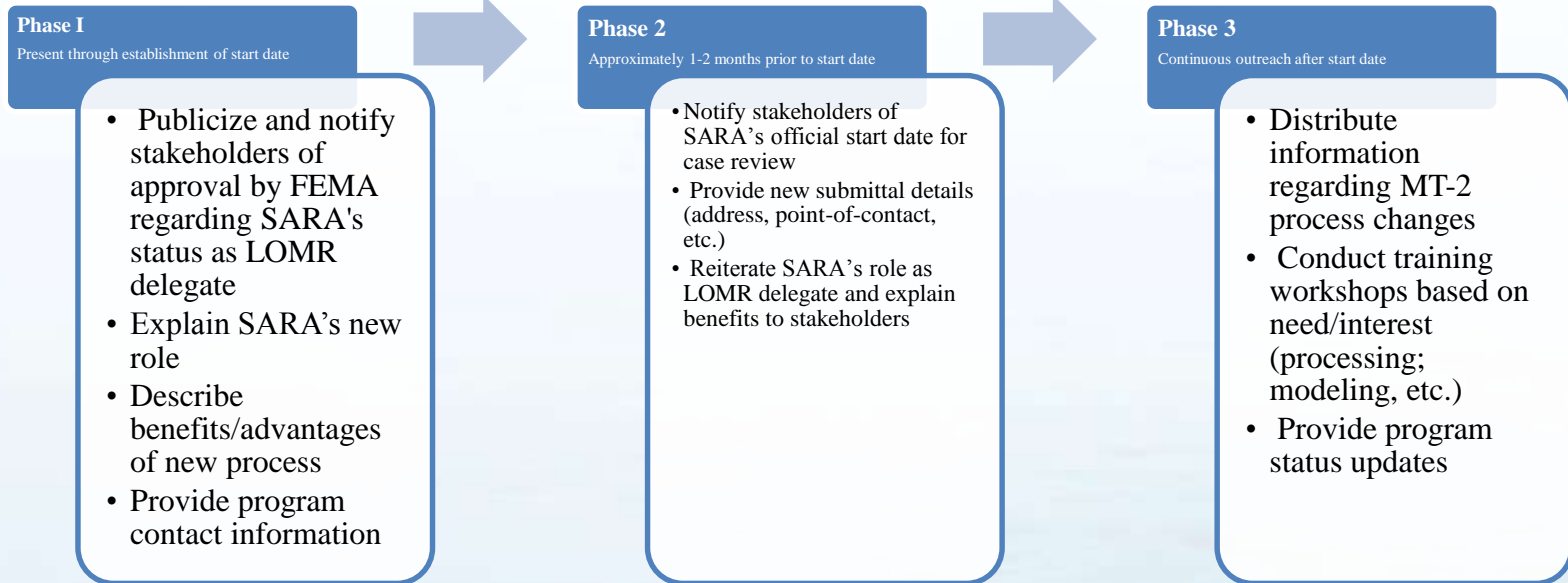
- Annual FEMA grant
- Federal Vs local funding cycle
- Local Support funding



Process Plan



Outreach Plan



Brochures & Training

WHAT TO SUBMIT

A CLOMR or LOMR request should include the application forms along with the appropriate supporting information. The submitter should include the following:

1. Completed application forms
2. Detailed description of project
3. Hydraulic computations (if applicable) along with the digital files of computer model used
4. Hydraulic computations of application along with the digital files of computer model used
5. Certified topographic map with floodplain and reachway if applicable delineations
6. Amended PFD to reflect changes due to project (PFDs can be ordered on line at <http://dohs.mnt.forest.gov/>)
7. CLOMRs will demonstrate ESR Compliance
8. Additional forms as needed to satisfy any AFP regulatory requirements
9. Review fee payment
10. Submit both the application package and applicable fees together to the following address:

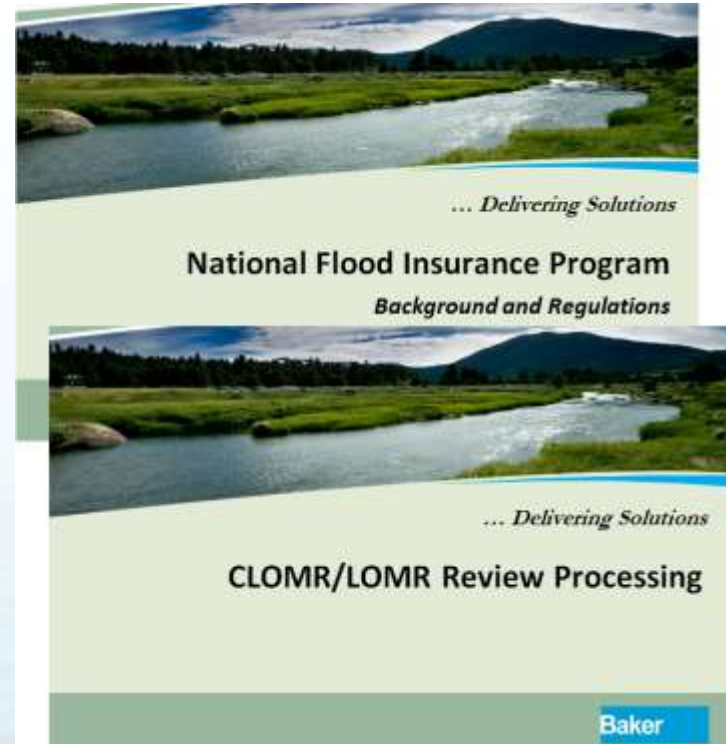
San Antonio River Authority
Attn: Watershed Engineering Dept.
P.O. Box 13990
San Antonio, Texas 78261-0990



Important Changes
Regarding MT-2
LOMR Processing
In Bexar, Wilson, Karnes,
And Goliad Counties



SAN ANTONIO
RIVER AUTHORITY
Leaders in Watershed Solutions



Local Support

<i>Tasks</i>	<i>Level A</i>	<i>Level B</i>
<i>Project Initiation</i>		
Site visit		
Establish History		
Meeting to discuss case		X
Provide models/mapping	X	X
Provide Modeling Standards	X	X
Provide QC and QA Checklists	X	X
<i>Pre-Federal LOMR Review</i>		
Checklists and Completeness Review		X
Technical Review (models, mapping, topo)		
Meeting to discuss case at completion of review (if needed)		X
Completeness Letter/Email Correspondence		X

Recap

- Serious Commitment
- Process & Outreach Plan
- Local Support Investments

Win-Win!

FEMA

- Local ownership of risk
- Enhanced partnerships
- Lower cost due to improved case quality & faster reviews

Local CTP

- Local control of risk
- National recognition
- Faster case reviews
- Increased risk awareness
- Community service