

Appendix C: Regional Analysis Supportive Data

All data analyzed for the Pedestrian Safety Action Plan was derived from Texas Department of Transportation's Crash Records Information System for reports in the Metropolitan Planning Area submitted between 2014-2018.

Contents

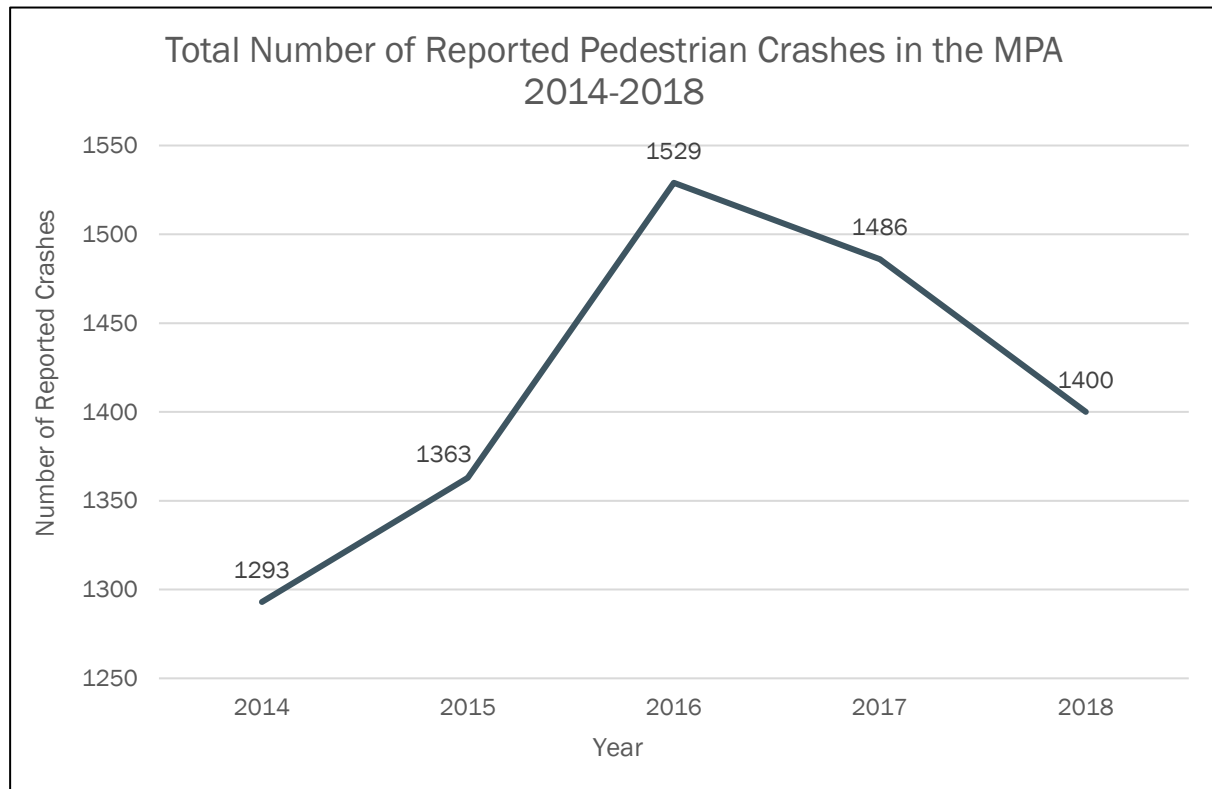
1.	Organized Crash Data for Verification	C-1
1.1	Total Pedestrian Crashes.....	C-1
1.2	Pedestrian Fatalities	C-2
1.3	Reported Crashes by Gender	C-3
1.4	Pedestrian Ages	C-5
1.5	Intersection vs. Non-Intersection	C-7
1.6	Day of Week	C-7
1.7	Contributing Factors.....	C-8

1. Organized Crash Data for Verification

1.1 Total Pedestrian Crashes

Pedestrian Related Crash Severity (2014-2018)							
Year	Fatality	Non-Incapacitating	Not Injured	Possible Injury	Suspected Serious Injury	Unknown Injury	Total
2014	95	497	48	375	271	7	1293
2015	128	529	38	365	289	14	1363
2016	147	534	64	427	337	20	1529
2017	144	578	54	388	304	18	1486
2018	146	425	51	461	302	15	1400
Total	660	2563	255	2016	1503	74	7071

Table 1: Detail of total reported pedestrian crashes by year in the MPA (2014-2018).



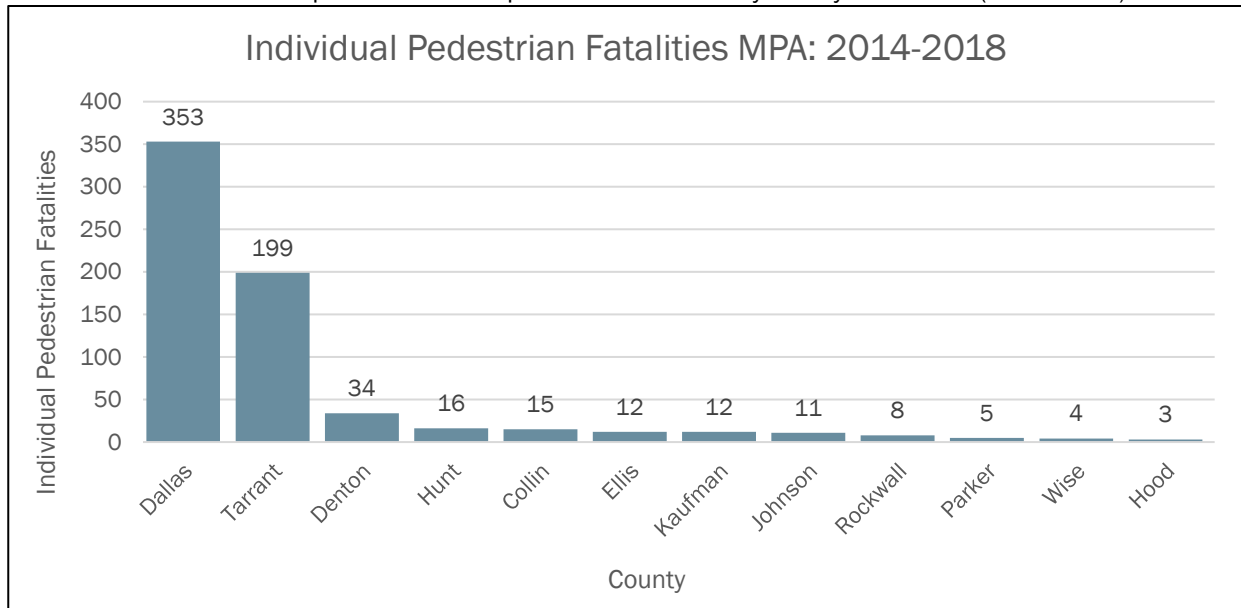
Graph 1: Detail of total reported pedestrian crashes in the MPA (2014-2018).

1.2 Pedestrian Fatalities

Total Pedestrian Fatalities Within MPA 2014 - 2018						
County	2014	2015	2016	2017	2018	Total
Dallas	54	71	84	73	71	353
Tarrant	29	39	40	45	46	199
Denton	2	7	7	11	7	34
Hunt	1	3	1	5	6	16
Collin	2	3	4	2	4	15
Ellis	2	0	4	3	3	12
Kaufman	1	1	6	4	0	12
Johnson	1	2	1	3	4	11
Rockwall	2	0	3	1	2	8
Parker	1	1	0	1	2	5
Wise	0	4	0	0	0	4
Hood	0	1	0	1	1	3
Total	95	132	150	149	146	672

Sources: Fatality Analysis Reporting System (FARS) 2010–2017 Final File, 2018 Annual Report File (ARF); Population – Census Bureau

Table 2: Table shows the reported individual pedestrian fatalities by county in the MPA (2014-2018).



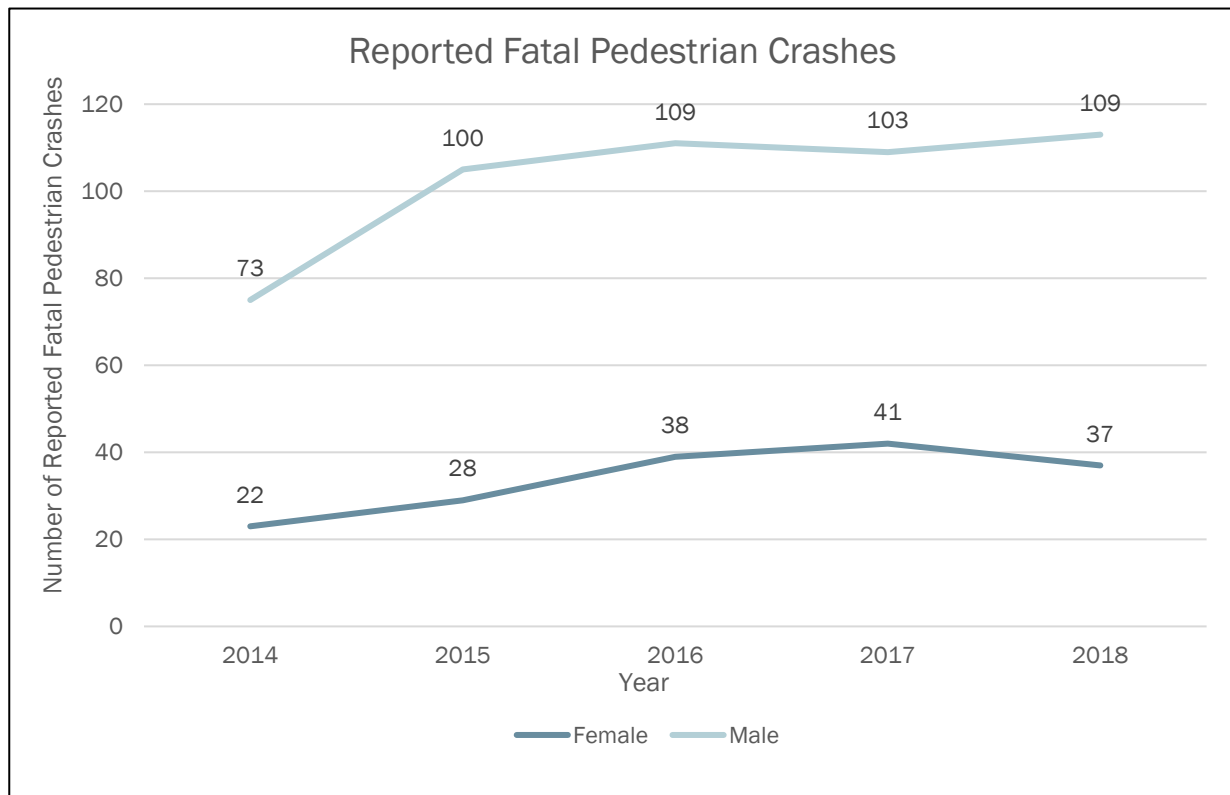
Sources: Fatality Analysis Reporting System (FARS) 2010–2017 Final File, 2018 Annual Report File (ARF); Population – Census Bureau

Graph 2: Shows individual pedestrian fatalities by county in the MPA (2014-2018).

1.3 Reported Crashes by Gender

Reported Fatal Pedestrian Crashes by Gender: 2014-2018			
Year	Female	Male	Total
2014	22	73	95
2015	28	100	128
2016	38	109	147
2017	41	103	144
2018	37	109	146
Total	166	494	660

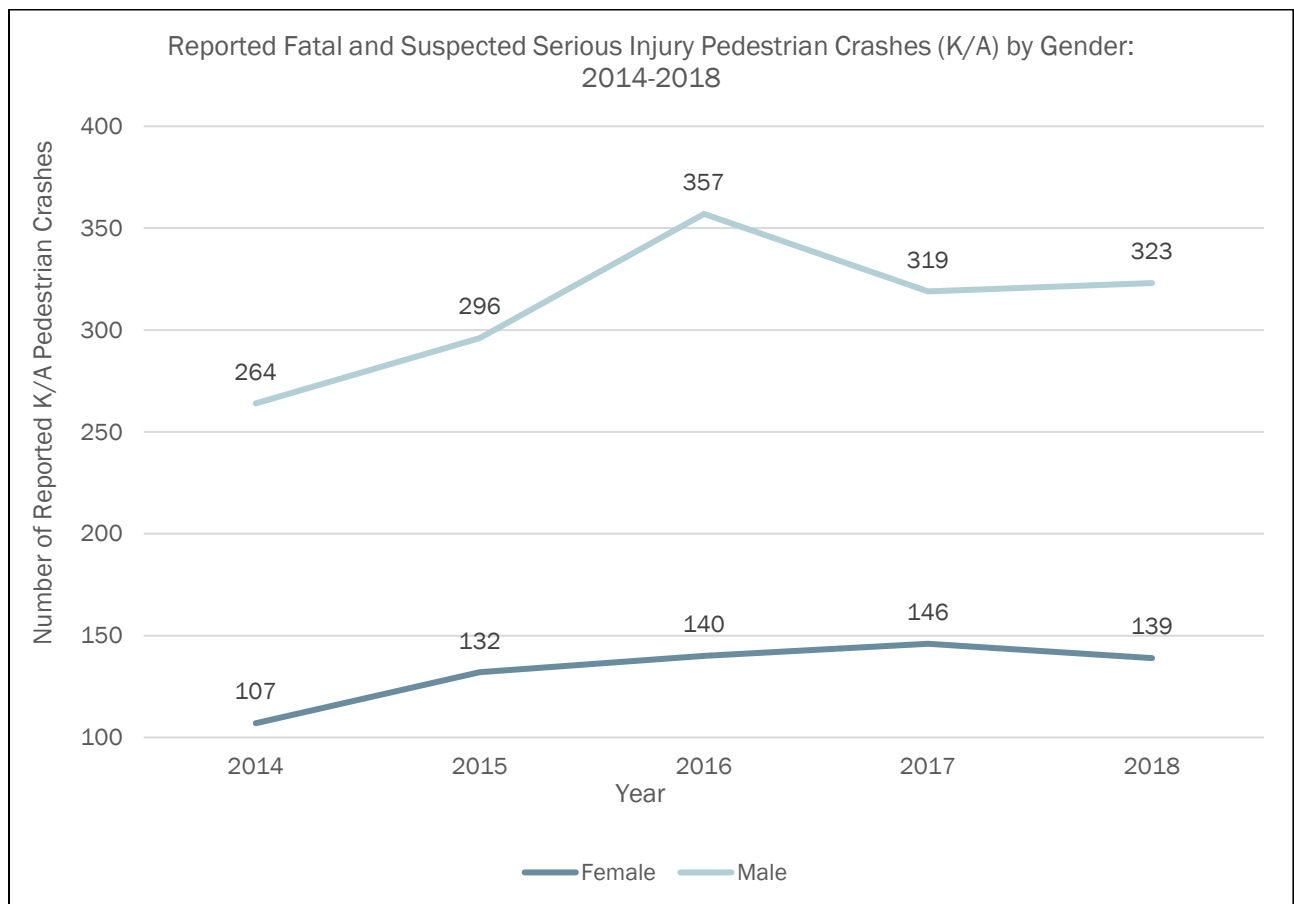
Table 3: Table shows reported crashes in the MPA involving at least one pedestrian fatality (2014-2018).



Graph 3: Graph shows reported crashes in the MPA involving at least one pedestrian fatality (2014-2018).

Reported Fatal and Suspected Serious Injury Pedestrian Crashes (K/A) by Gender: 2014-2018			
Year	Female	Male	Total
2014	107	264	371
2015	132	296	428
2016	140	357	497
2017	146	319	465
2018	139	323	462
Total	664	1559	2223

Table 4: Table shows reported fatal and suspected serious injury crashes by gender (2014-2018).

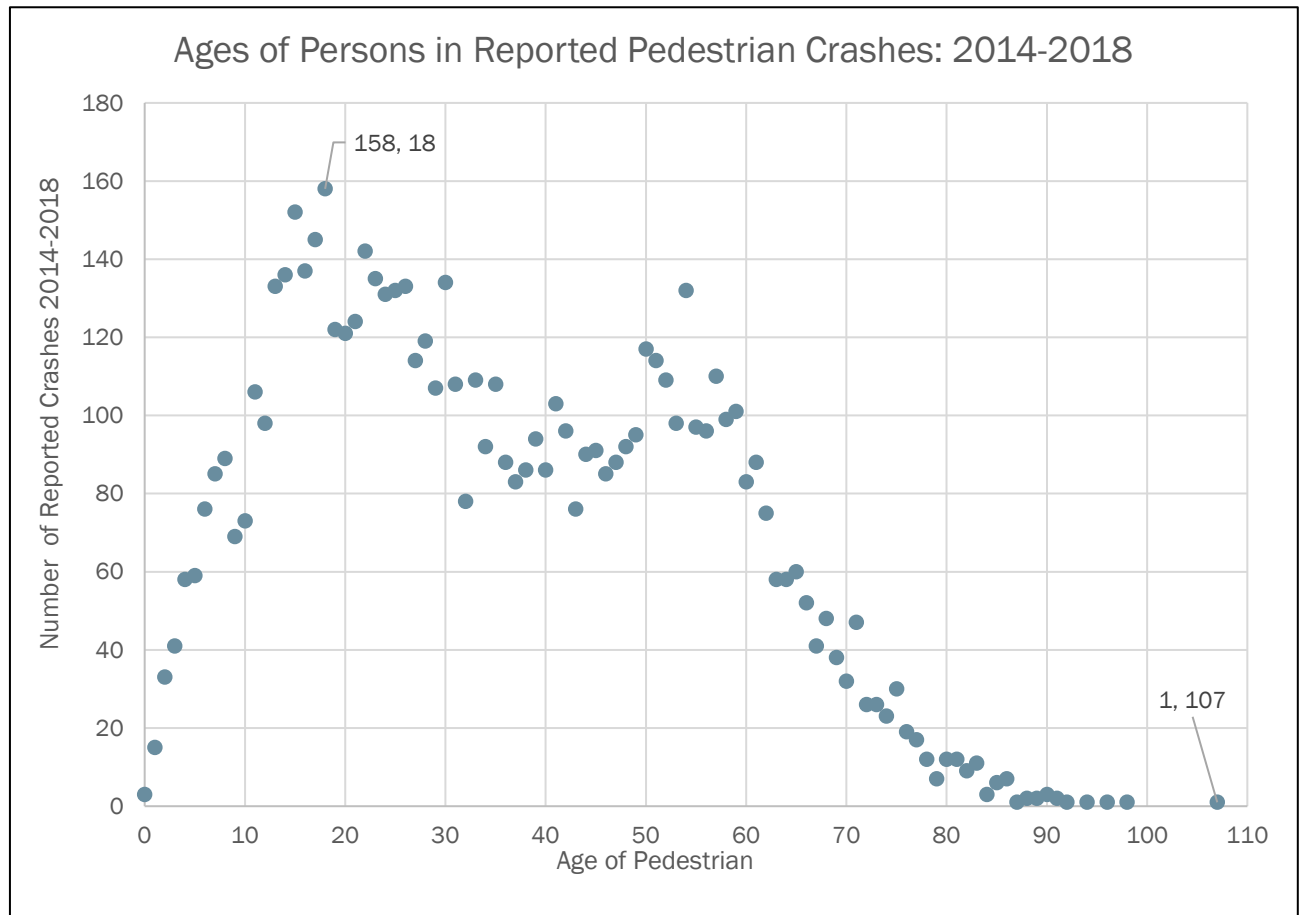


Graph 4: Graph shows Fatal and Suspected Serious Injuries sustained Male and Female Pedestrians (2014-2018).

1.4 Pedestrian Ages

Age of Persons in Reported Pedestrian Crashes: 2014-2018													
Year	<1	1-10	11-20	21-30	31-40	41-50	51-60	61-70	71-80	81-90	91-100	101-110	Total
2014	32	122	257	229	146	188	188	81	38	12	0	1	1294
2015	30	117	268	259	172	167	196	93	46	12	3	0	1363
2016	35	122	286	268	205	204	222	129	44	13	1	0	1529
2017	34	138	248	270	205	192	217	123	43	14	2	0	1486
2018	28	99	249	245	204	182	216	124	48	5	0	0	1400
Total	159	598	1308	1271	932	933	1039	550	219	56	6	1	7072

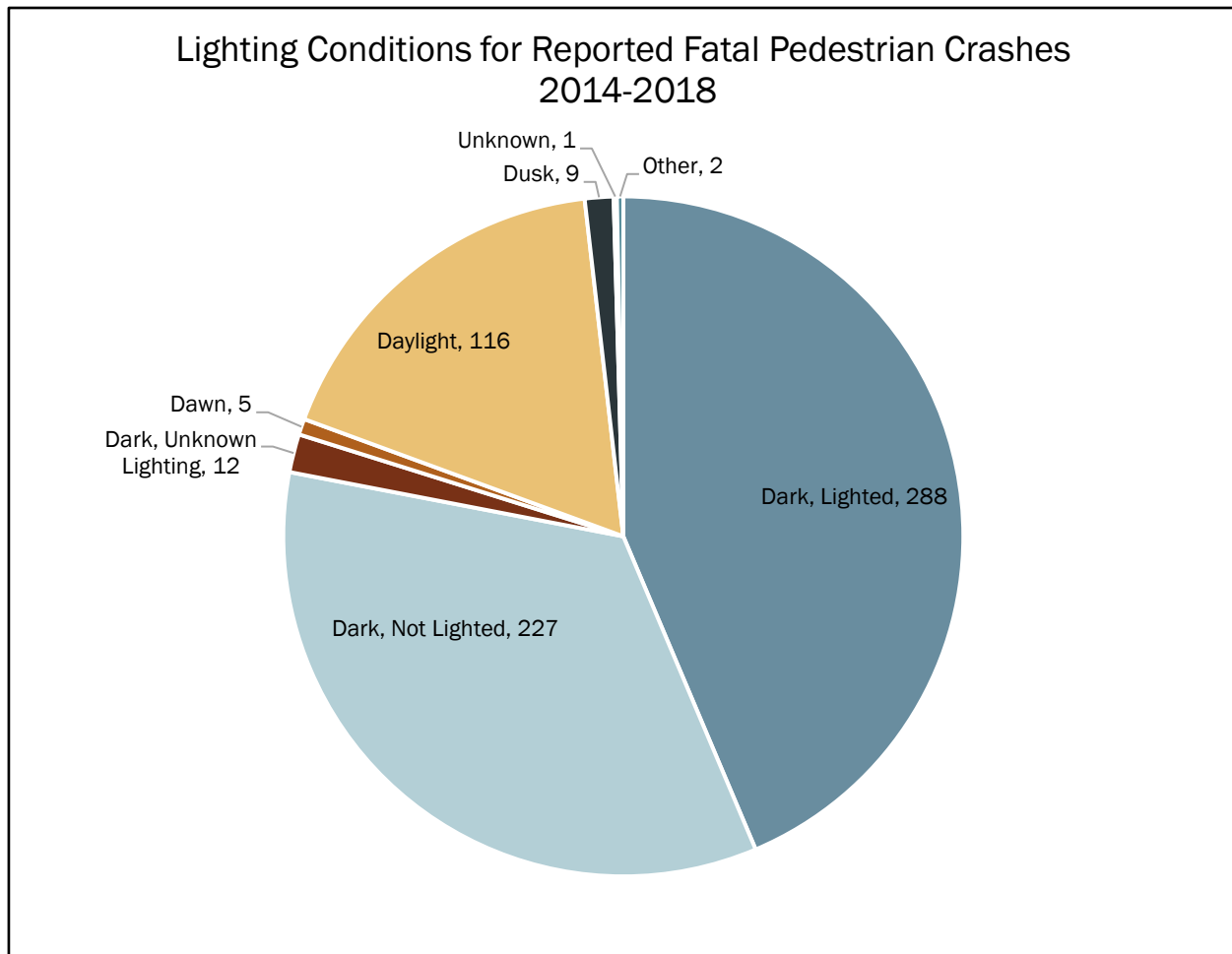
Table 5: Table shows the Age Distribution of Reported Pedestrian Crashes (2014-2018).



Graph 5: Graph shows visualization of Age Distribution for Reported Pedestrian Crashes (2014-2018).

Urban vs. Rural Areas for Reported Pedestrian Crashes: 2014-2018			
Year	Urban	Rural	Total
2014	1266	28	1294
2015	1326	37	1363
2016	1493	36	1529
2017	1439	47	1486
2018	1361	39	1400
Total	6885	187	7072
Total %	97%	3%	100%

Table 6: Chart shows Pedestrian Crashes in Urban vs. Rural Areas from 2014-2018. When converted to a percentage, **Urban** areas saw **97 percent** of reported crashes vs. **3 percent** in **Rural** areas.



Graph 6: Pie chart shows lighting conditions associated with reported pedestrian fatalities (total 672) 2014-2018.

	Lighting Condition Other Than Dark	Dark Lighting Condition
Reported Pedestrian Crashes	145	527
Crash %	21.58%	78.42%

Table 7: Shows Reported Pedestrian Crashes and percentage of Light (44.22 percent) vs. Dark Lighting Conditions (55.87 percent) from 2014-2018.

1.5 Intersection vs. Non-Intersection

Intersection Related Reported Pedestrian Crashes: 2014-2018							
Row Labels	Fatality	Non-Incapacitating	Not Injured	Possible Injury	Suspected Serious Injury	Unknown Injury	Total
Driveway Access	14	135	12	140	58	2	361
Intersection	30	161	17	148	108		464
Intersection Related	78	993	72	852	420	7	2422
Non-Intersection	440	974	108	687	737	2	2948
Non-Intersection	121	316	35	185	220		877
Grand Total	683	2579	244	2012	1543	11	7072

Table 8: Shows Intersection-Related Reported Pedestrian Crashes (2014-2018).

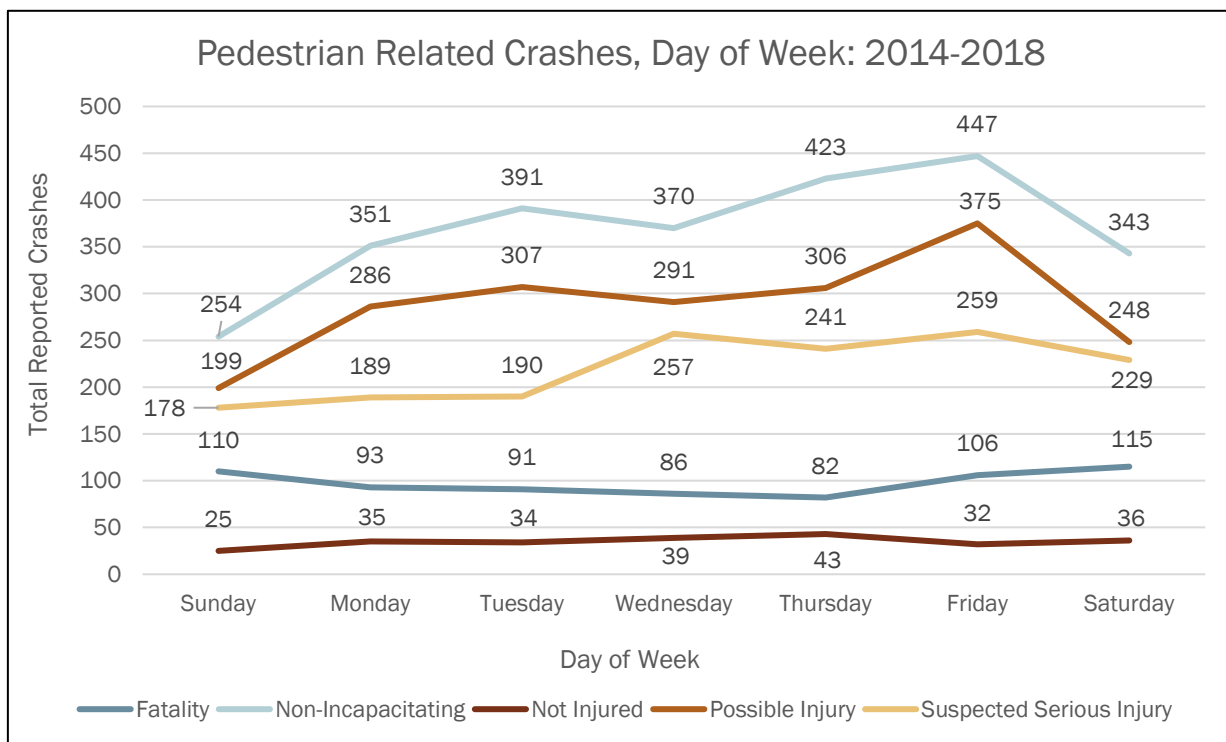
Injury Level	Non-Intersection	Intersection	Total
Fatal (K)	594	66	660
Suspected Serious Injury (A)	1178	325	1503
Total	1772	391	2163

Table 9: Shows K-A crash totals at intersections and non-intersections.

1.6 Day of Week

Pedestrian Related Crashes, Day of Week: 2014-2018							
Day of Week	Fatality	Non-Incapacitating	Not Injured	Possible Injury	Suspected Serious Injury	Unknown Injury	Total
Sunday	110	254	25	199	178	2	768
Monday	93	351	35	286	189	1	955
Tuesday	91	391	34	307	190	2	1015
Wednesday	86	370	39	291	257	2	1045
Thursday	82	423	43	306	241	2	1097
Friday	106	447	32	375	259		1219
Saturday	115	343	36	248	229	2	973
Total	683	2579	244	2012	1543	11	7072

Table 10: Table shows Pedestrian Related Crashes and their occurrence by Day of Week (2014-2018).



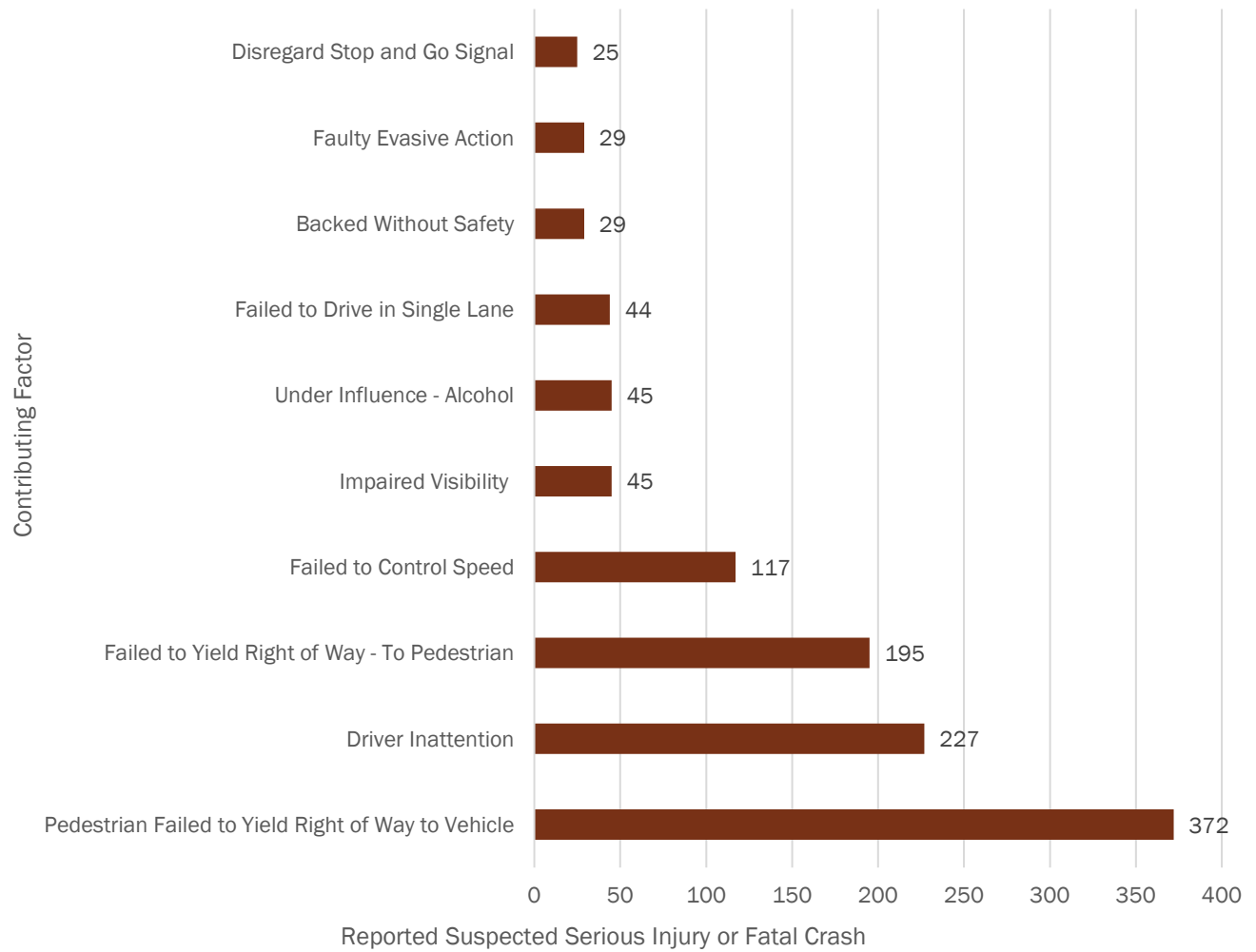
Graph 7: Graph shows Pedestrian Related Crashes and their occurrence by Day of Week (2014-2018).

1.7 Contributing Factors

Top 10 Contributing Factors in Fatal or Suspected Serious Injury Crashes Within MPA Region: 2014-2018			
Factor	Fatality	Suspected Serious Injury	Total
Pedestrian Failed to Yield Right of Way to Vehicle	72	102	372
Driver Inattention	14	54	227
Failed to Yield Right of Way - To Pedestrian	8	29	195
Failed to Control Speed	14	36	117
Impaired Visibility	4	10	45
Under Influence - Alcohol	7	17	45
Failed to Drive in Single Lane	7	9	44
Backed Without Safety	3	3	29
Faulty Evasive Action	2	9	29
Disregard Stop and Go Signal	4	7	25
Total	135	276	1128

Table 11: Table shows top 10 Contributing Factors in Fatal or Suspected Serious Injury Crashes within the MPA (2014-2018).

Contributing Factors in Fatal or Suspected Serious Injury Crashes Within MPO Region: 2014-2018



Graph 8: Graph shows top 10 Contributing Factors in Fatal or Suspected Serious Injury Crashes within the MPA (2014-2018).