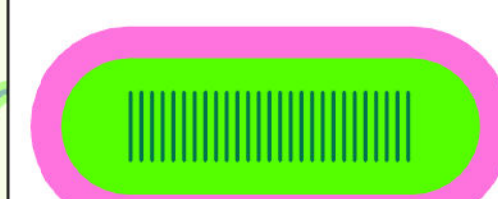


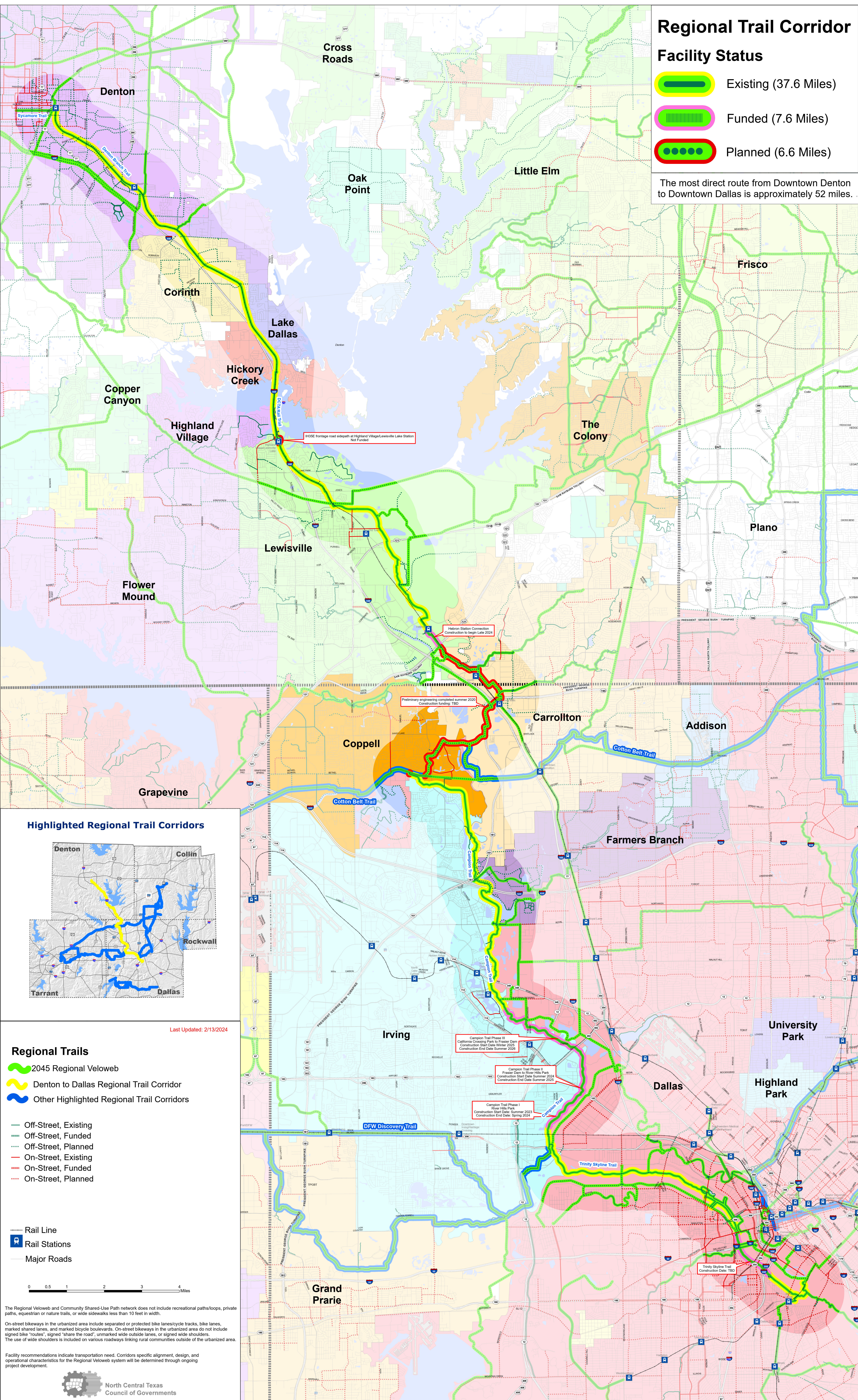
# Denton to Dallas Regional Trail

## Regional Trail Corridor

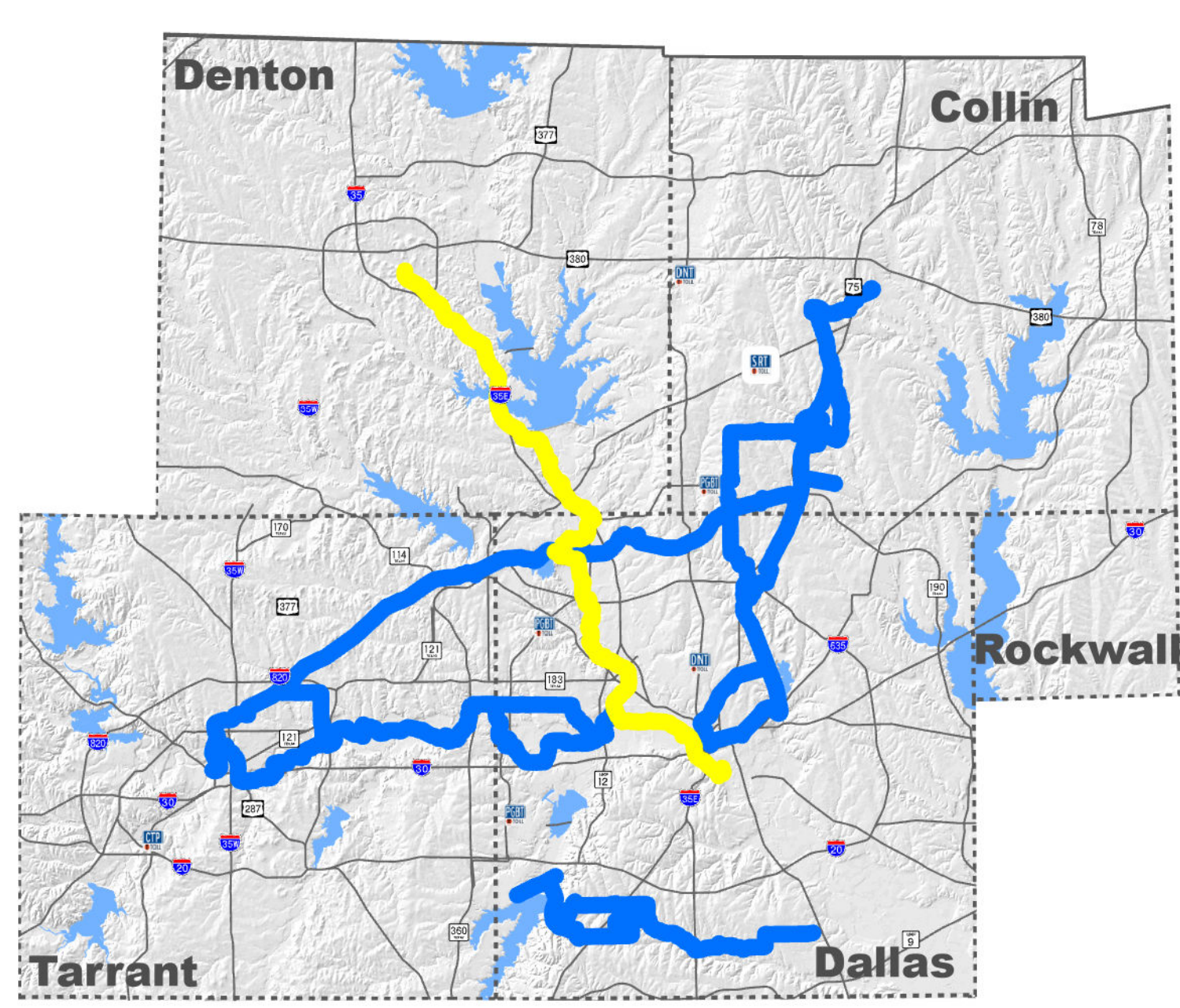
### Facility Status

-  Existing (37.6 Miles)
-  Funded (7.6 Miles)
-  Planned (6.6 Miles)

The most direct route from Downtown Denton to Downtown Dallas is approximately 52 miles.






### Highlighted Regional Trail Corridors



Last Updated: 2/13/2024

### Regional Trails

-  2045 Regional Veloweb
-  Denton to Dallas Regional Trail Corridor
-  Other Highlighted Regional Trail Corridors

-  Off-Street, Existing
-  Off-Street, Funded
-  Off-Street, Planned
-  On-Street, Existing
-  On-Street, Funded
-  On-Street, Planned

-  Rail Line
-  Rail Stations
-  Major Roads

0 0.5 1 2 3 4 Miles

The Regional Veloweb and Community Shared-Use Path network does not include recreational paths/loops, private paths, equestrian or nature trails, or wide sidewalks less than 10 feet in width.

On-street bikeways in the urbanized area include separated or protected bike lanes/cycle tracks, bike lanes, marked shared lanes, and marked bicycle boulevards. On-street bikeways in the urbanized area do not include signed bike "routes", signed "share the road", unmarked wide outside lanes, or signed wide shoulders. The use of wide shoulders is included on various roadways linking rural communities outside of the urbanized area.

Facility recommendations indicate transportation need. Corridors specific alignment, design, and operational characteristics for the Regional Veloweb system will be determined through ongoing project development.



North Central Texas Council of Governments