

Texas Wildlife Services

Urban Feral Hog

Adam Henry

Wildlife Damage Management Biologist

adam.c.henry@usda.gov

817-978-3146

Texas Wildlife Services Program

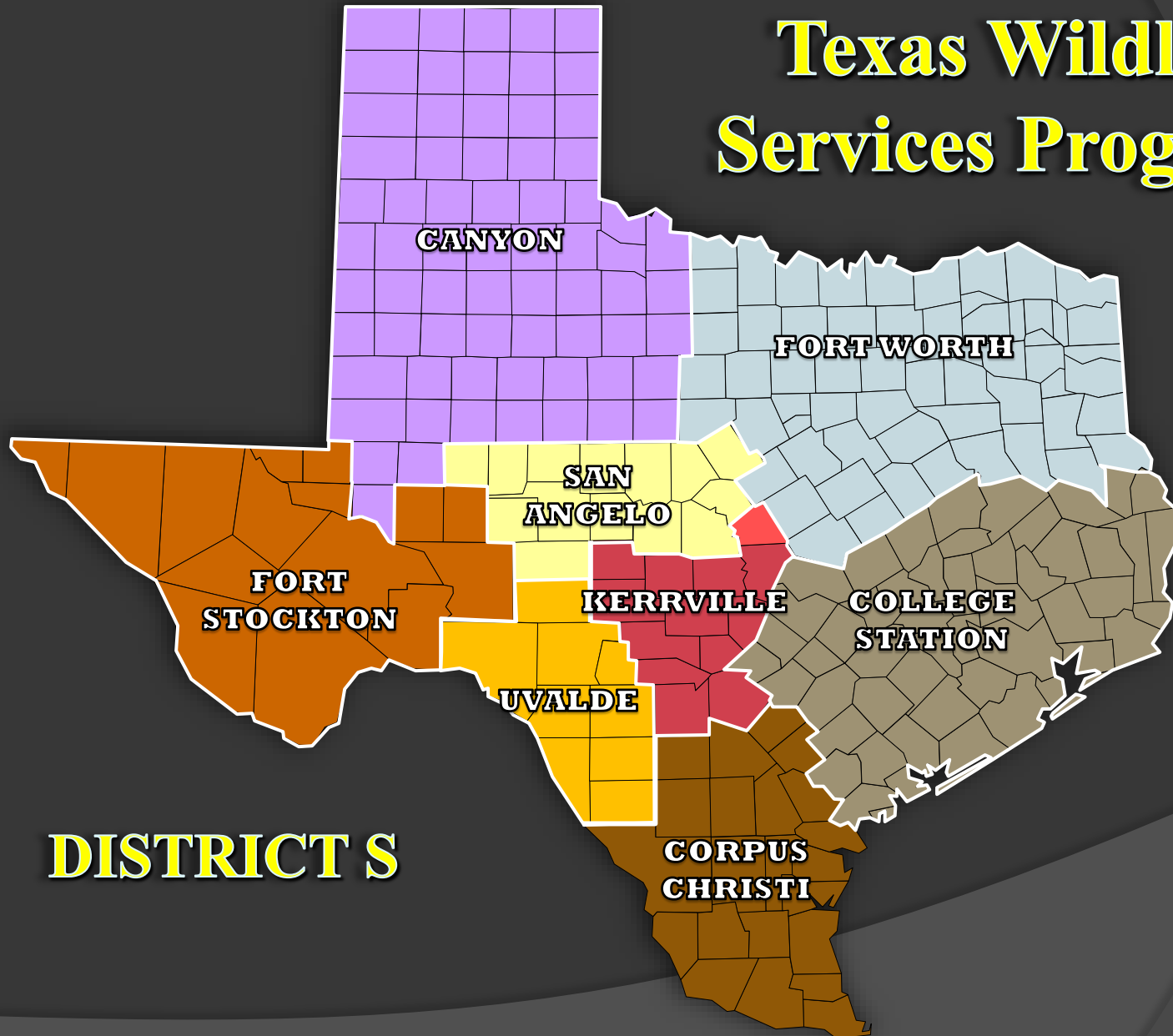
A teal-colored outline map of the state of Texas is centered on the page. The map is filled with a solid teal color and has a dark teal drop shadow. It is positioned behind the text, which is white and centered over the map.

USDA-APHIS-WILDLIFE SERVICES

The TEXAS A&M AGRILIFE
EXTENSION SERVICE

TEXAS WILDLIFE DAMAGE
MANAGEMENT ASSOCIATION

Texas Wildlife Services Program



DISTRICT S

WS Works to Protect

- Human Health and Safety from wildlife-related diseases such as rabies and plague and wildlife-related hazards such as bird-aircraft strikes.
- Facilities, Structures, and Other Property from damage caused by rats, mice, raccoons, skunks, opossums, squirrels, beaver, birds and other wildlife.
- Crops, Timber, and Rangeland from damage caused by gophers, prairie dogs, feral hogs, raccoons, rabbits, coyotes, grackles, beaver and other wildlife.
- Livestock from depredation caused by coyotes, bobcats, feral hogs, mountain lions, raccoons, birds and other wildlife.
- Wildlife and Other Natural Resources such as endangered species and game animals as well as soil, water and flora from damage and predation by wildlife.

Damage







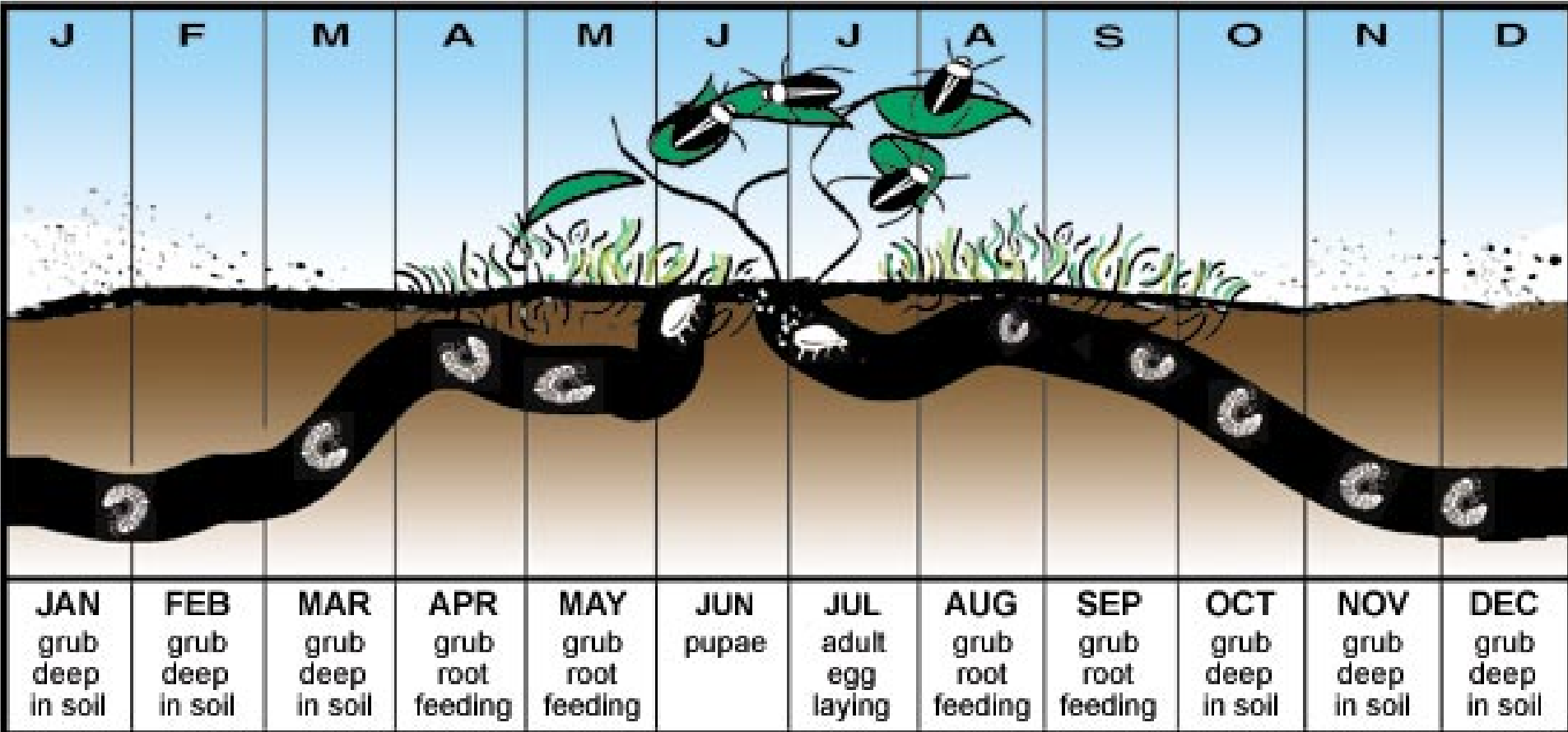
WS FY21 Metroplex Project

- 70,000 acres
- 11 cooperators
- \$25,000 in damages*
- 277 swine removed

Education and Outreach

- Meet with property owners
- Make suggestions
- Discuss options
- Involve them in solution

Grub Control







Fencing

- Non-Lethal
- Long term solution
- Multiple types

 **WARNING!**
ELECTRIC FENCE
¡ADVERTENCIA!
CERCA ELÉCTRICA
AVERTISSEMENT!
CLÔTURE ÉLECTRIQUE

 AMERICAN
FARM & RANCH



Turbo Fladry









Direct control

- ⦿ City Property
- ⦿ Private property
- ⦿ How will we dispose of Swine
- ⦿ Hire a private Trapper
- ⦿ Hire a State/Gov Trapper
- ⦿ Allow citizens to Hire trapper
- ⦿ Pick one department to oversee

Transport Law

- Approved holding facility
- Recognized slaughter facility
- Authorized hunting preserve

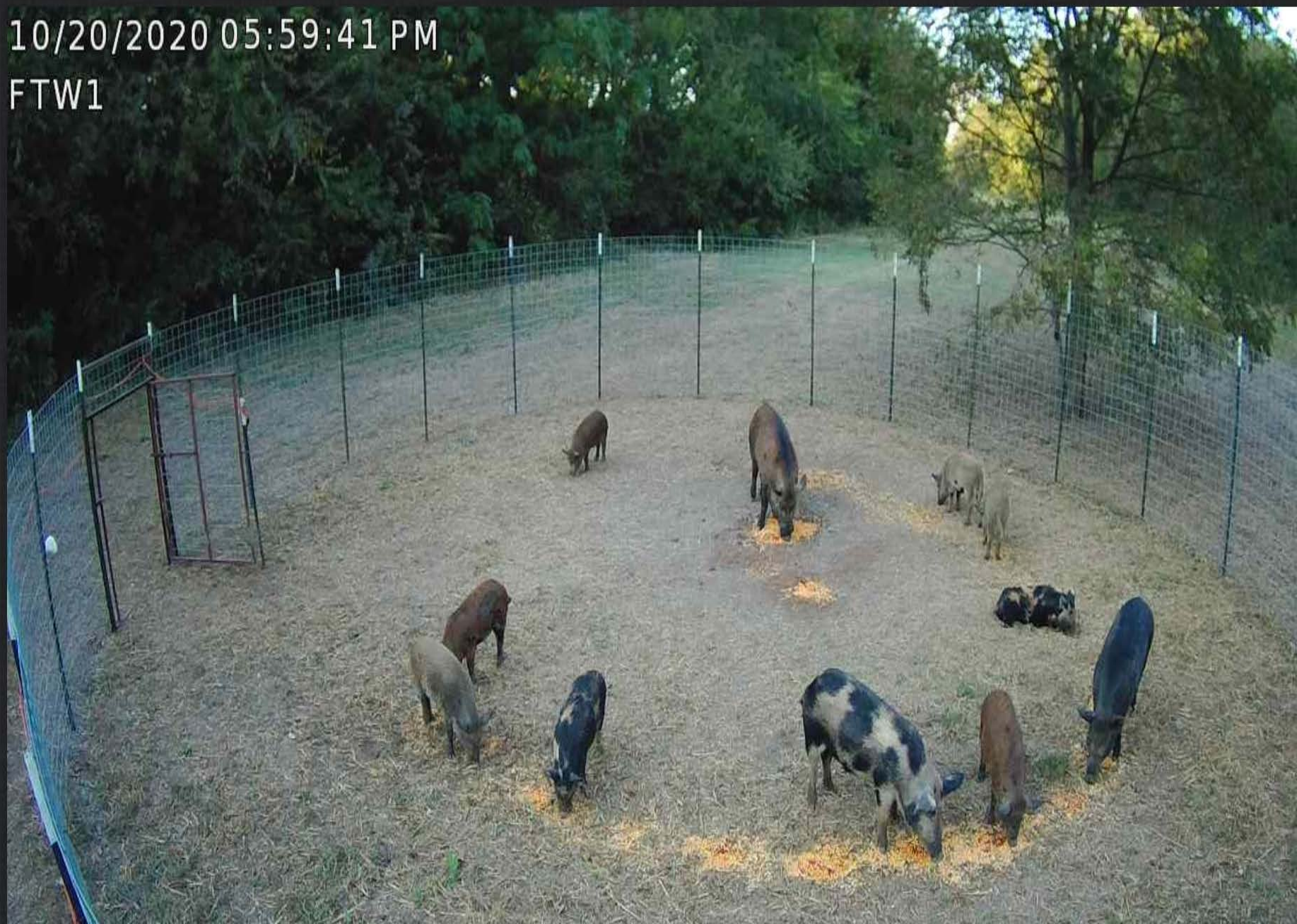
- .10-.60cents/lbs





10/20/2020 05:59:41 PM

FTW1





View 1

View 2

Main

View 3

View 4

Z-

Z+

Lt

Rt

Up

Dwn

Set Views ▲

Strategic shooting

- Certain number of hogs that don't enter traps
- Damage still occurs
- Very effective for solitary animals
- Coordination with PD



f100



A f100y



SA

2.1x



Off

10:15 PM



Challenges

- Budget
- Manpower
- Using all the tools
- Sustained effort
- Department responsibility

Questions?

Adam Henry

adam.c.henry@usda.gov

817-978-2630