

**SANITARY SEWER  
OVERFLOWS AND THE  
TEXAS COMMISSION ON  
ENVIRONMENTAL  
QUALITY**

**Greg Diehl**

**DFW Region  
Office**

**Wastewater  
Work Leader**

## OVERVIEW:

- **The TCEQ's SSO Initiative –  
What is it and how does it  
work?**
- **The data collected**
- **SB912**

# UNAUTHORIZED DISCHARGES SANITARY SEWER OVERFLOWS (SSO)

- An *unauthorized discharge* (UD) is any discharge of wastewater into or adjacent to any water in the state at a location not permitted as an outfall. An unauthorized discharge may include a discharge of wastewater onto land (paved or otherwise), or a discharge into a pond, creek, canal, river, lake, wetland, or any other body of surface water or groundwater.
- A *sanitary sewer overflow* (SSO) is a type of unauthorized discharge of untreated or partially treated wastewater from a collection system or its components (e.g., a manhole, lift station, or cleanout) before reaching a wastewater treatment facility.

# TEXAS WATER CODE

- **Sec 26.121 (a)** except as authorized by the commission, no person may
  - **(1)** discharge sewage, municipal waste, recreational waste, agricultural waste, or industrial waste into or adjacent to any water in the state.

- Began in 2004 with the goal of reducing overflows in a short time period and before they become so significant that they would lead to formal enforcement

**SSOI**  
Sanitary  
Sewer  
Overflow  
Initiative

- A participating facility is protected from formal enforcement actions for SSOs from areas of the system that are covered under the SSO Agreement that do not have significant impact to human health or the environment.

**SSOI**  
Sanitary  
Sewer  
Overflow  
Initiative

# THE SSOI PROCESS

- The process for inclusion into the program normally begins with a regional investigator
- To determine eligibility the investigator will perform an investigation if one has not been completed in the last 12 months



# THE SSOI PROCESS

## Regional Office

- Determine eligibility
- Meet with the facility
- Provide facility with the “NOI to participate in the SSOI” form
- Hold a follow up meeting and issue a “Notice to Confirm Participation” letter
- Evaluates the SSO plan

## Enforcement Division

- Drafts the SSO Agreement
- Monitors compliance with the SSO Agreement
- Makes amendments to the SSO Agreement as necessary



# THE SSO PLAN

- Description of the causes of the SSOs
- Interim measures that will be taken to mitigate the effects of continuing SSOs
- Length of the plan (not to exceed 10 years)
- Description of the corrective measures with milestones to address continuing SSOs
- Provisions to improve or develop and implement an Operations and Maintenance Program
- A timeline for completing each milestone
- Description of the sources for funding, including budget allocations
- Provisions for evaluating the effectiveness of the improvements

- **Facilities that are owned by private (for profit) entities**
- **Facilities currently under formal enforcement for SSOs**
- **Facilities currently under formal enforcement for SSOs by the EPA**

**WHO IS NOT  
ELIGIBLE TO  
PARTICIPATE**

# AMENDMENTS TO THE PLAN

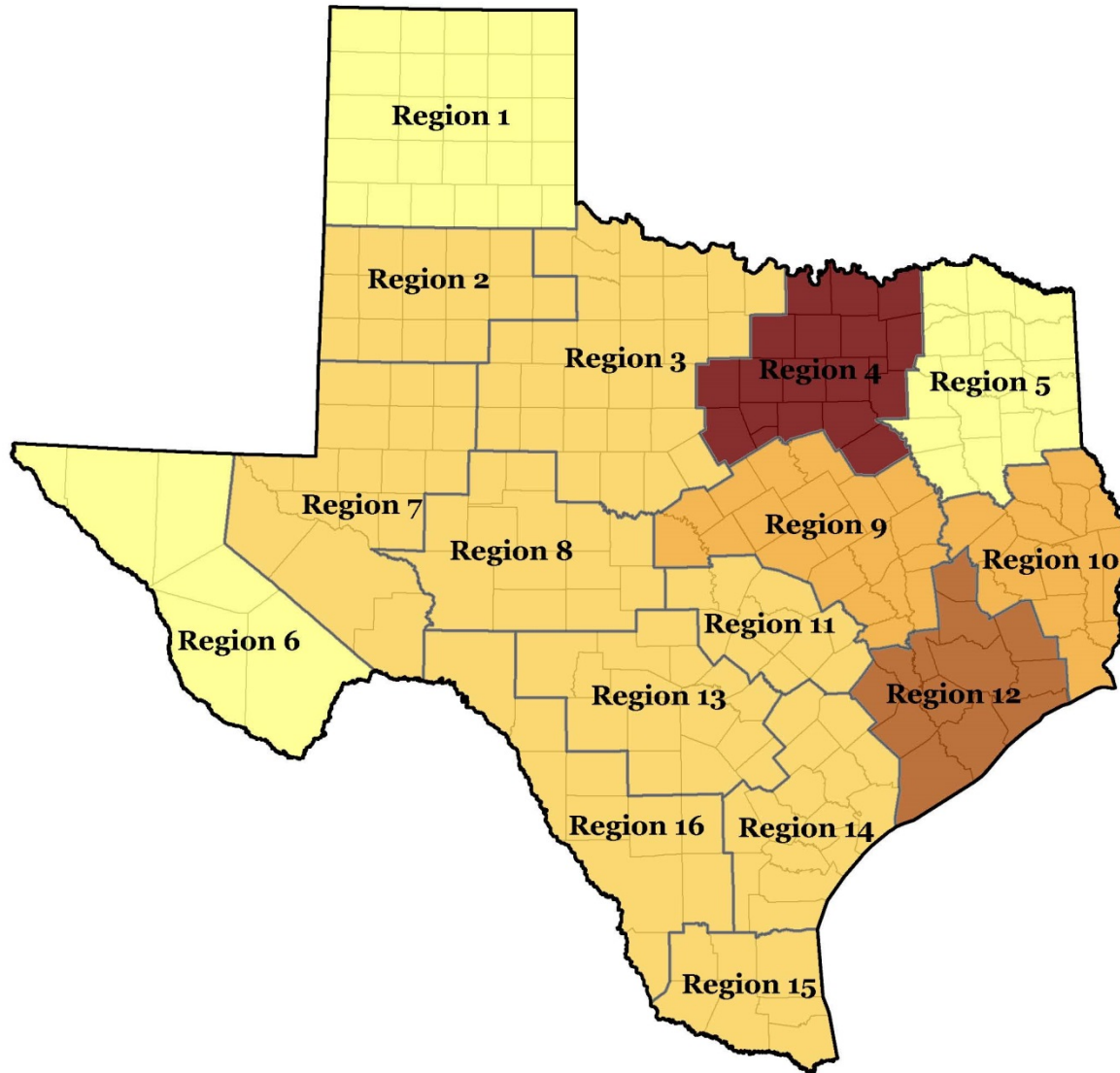
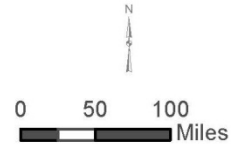
- Because participation in the SSOI requires a participant to continuously evaluate the progress toward reducing SSOS, there is a potential for a participant to submit requests to amend the provisions of their plan.
- Requests for amendments to the plan will be handled on a case-by-case basis.

# SSOI Participants in Texas

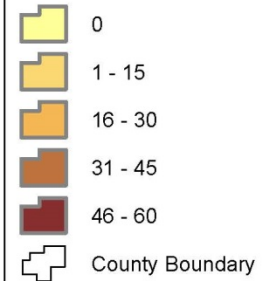


Texas Commission on Environmental Quality  
GIS Team (Mail Code 197)  
P.O. Box 13087  
Austin, Texas 78711-3087

Date: 8/13/2015

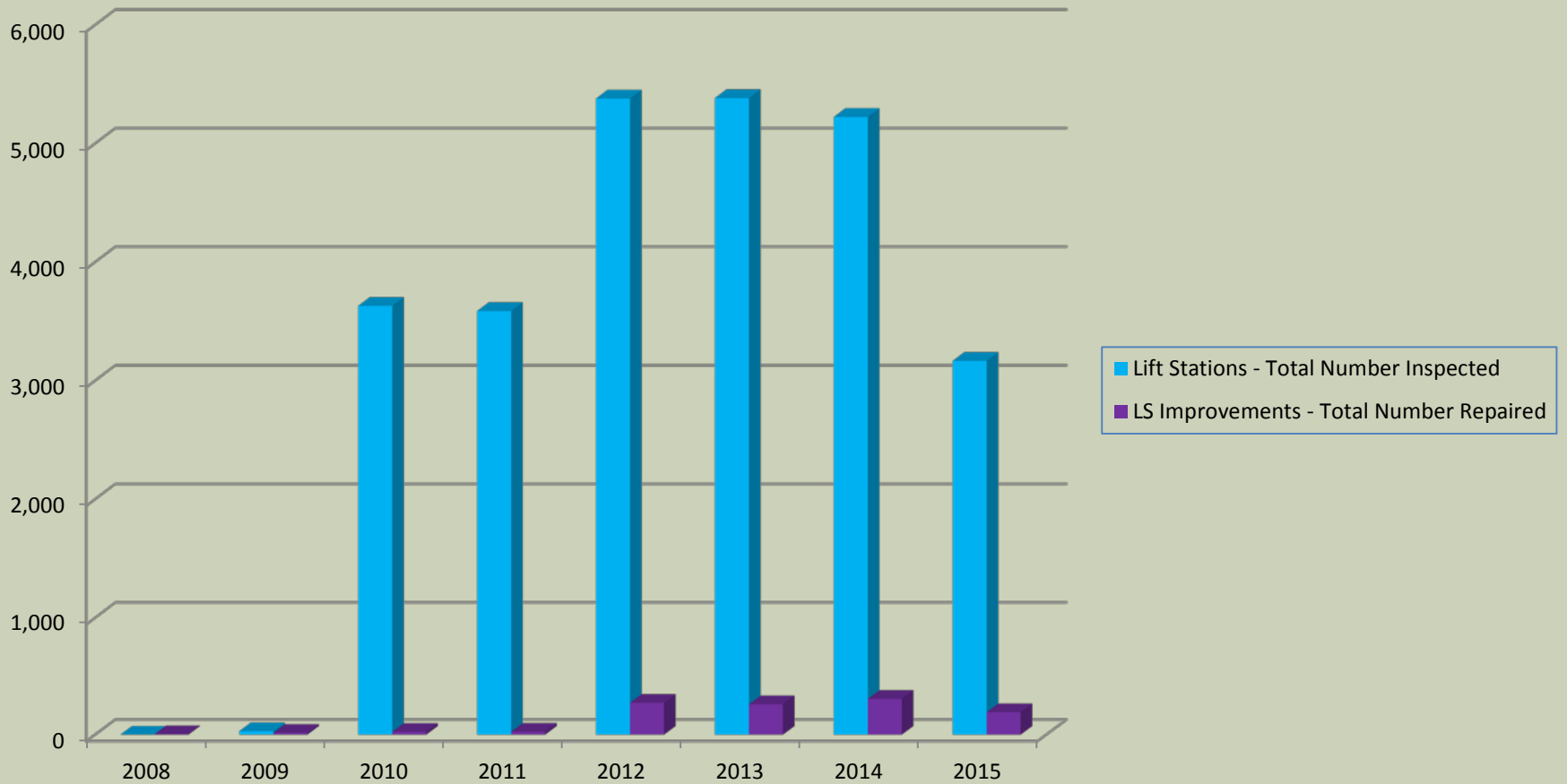


### Number of Participants



This map was generated by the Information Resources Division of the Texas Commission on Environmental Quality. This product is for informational purposes and may not have been prepared for or be suitable for legal, engineering, or surveying purposes. It does not represent an on-the-ground survey and represents only the approximate relative location of property boundaries. For more information concerning this map, contact the Information Resource Division at (512) 239-0800.

# LIFT STATION DATA

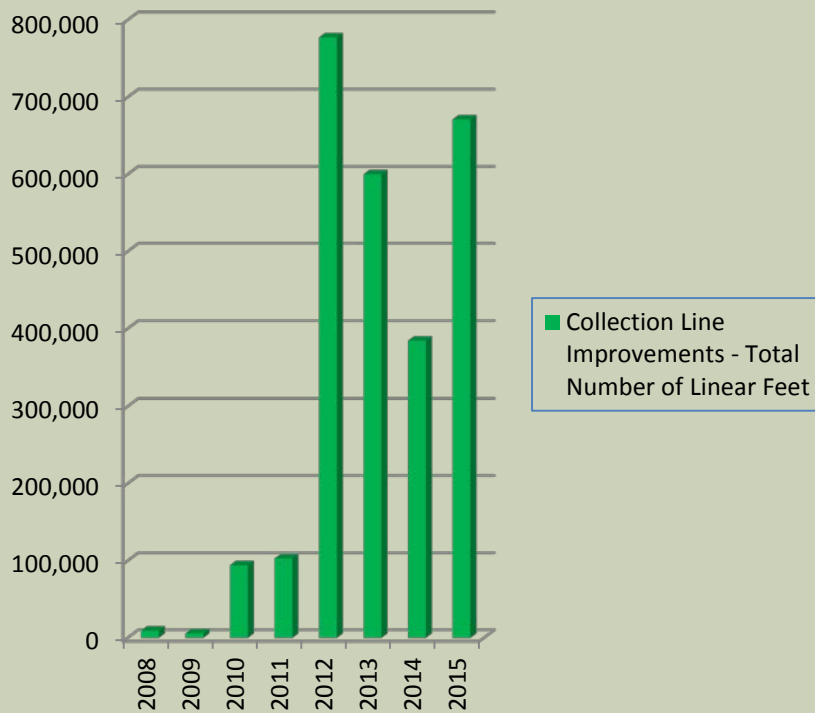


# MANHOLE DATA

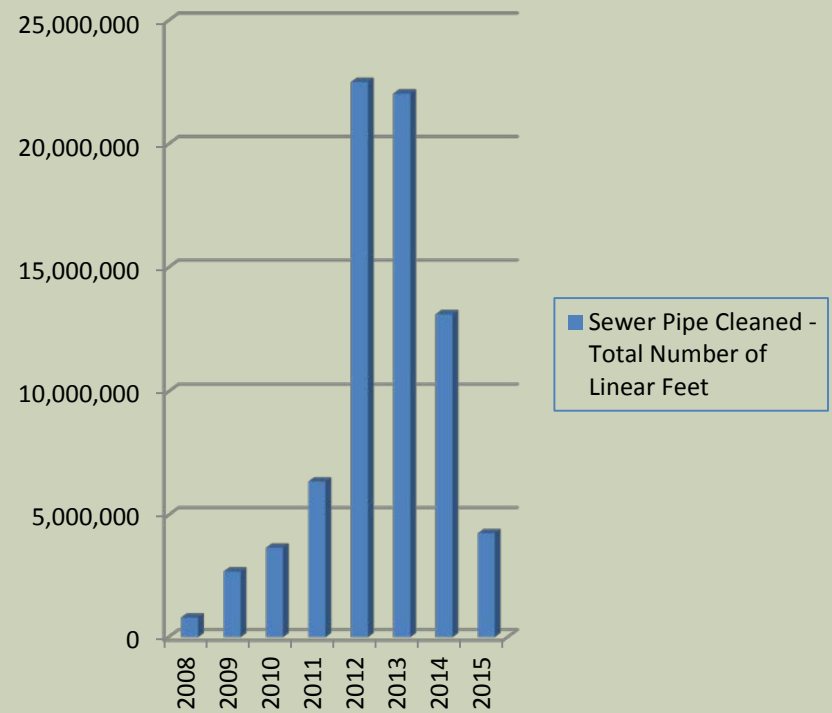


# LINE IMPROVEMENTS AND CLEANING

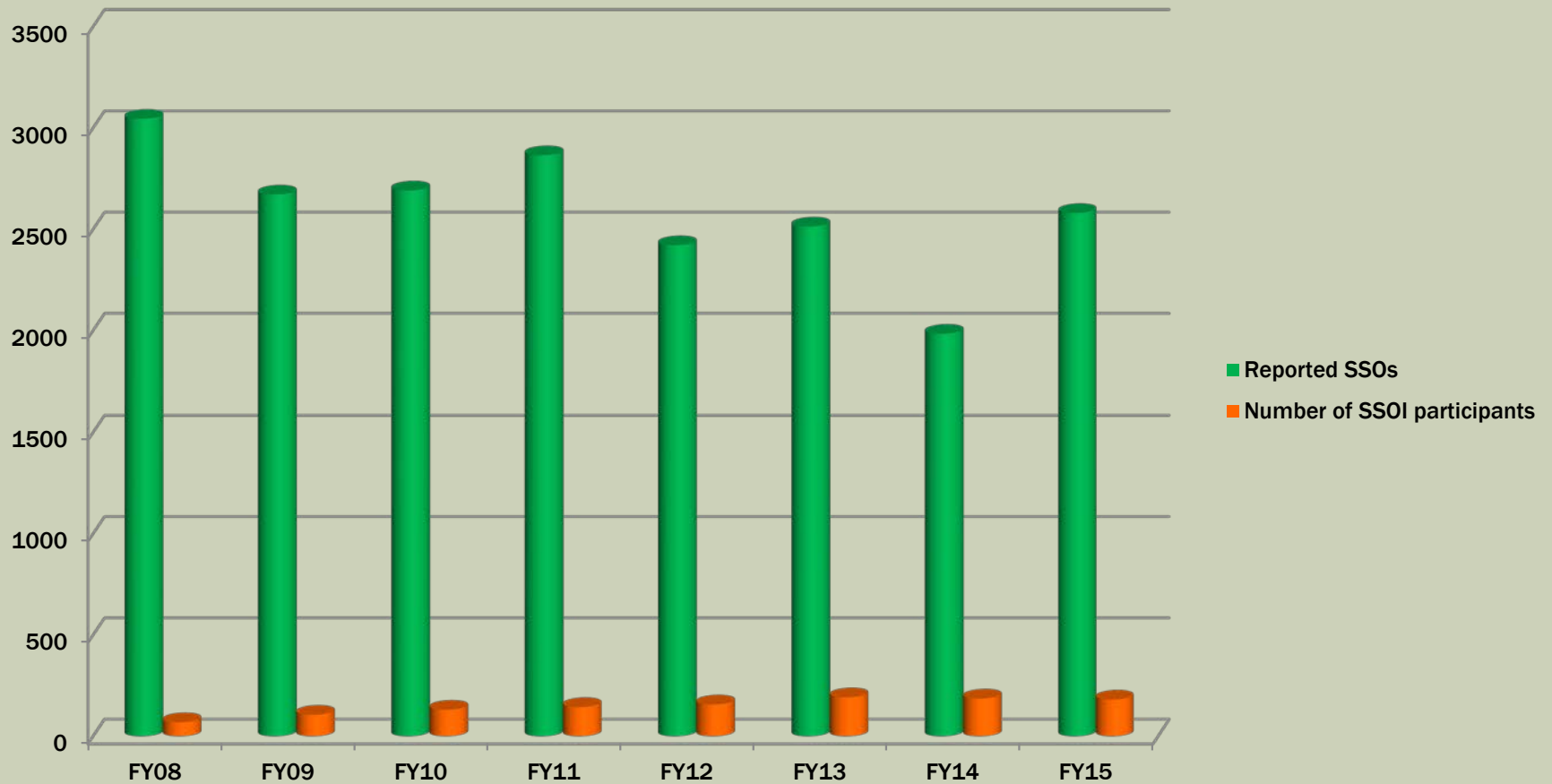
## Collection Line Improvements - Total Number of Linear Feet



## Sewer Pipe Cleaned - Total Number of Linear Feet

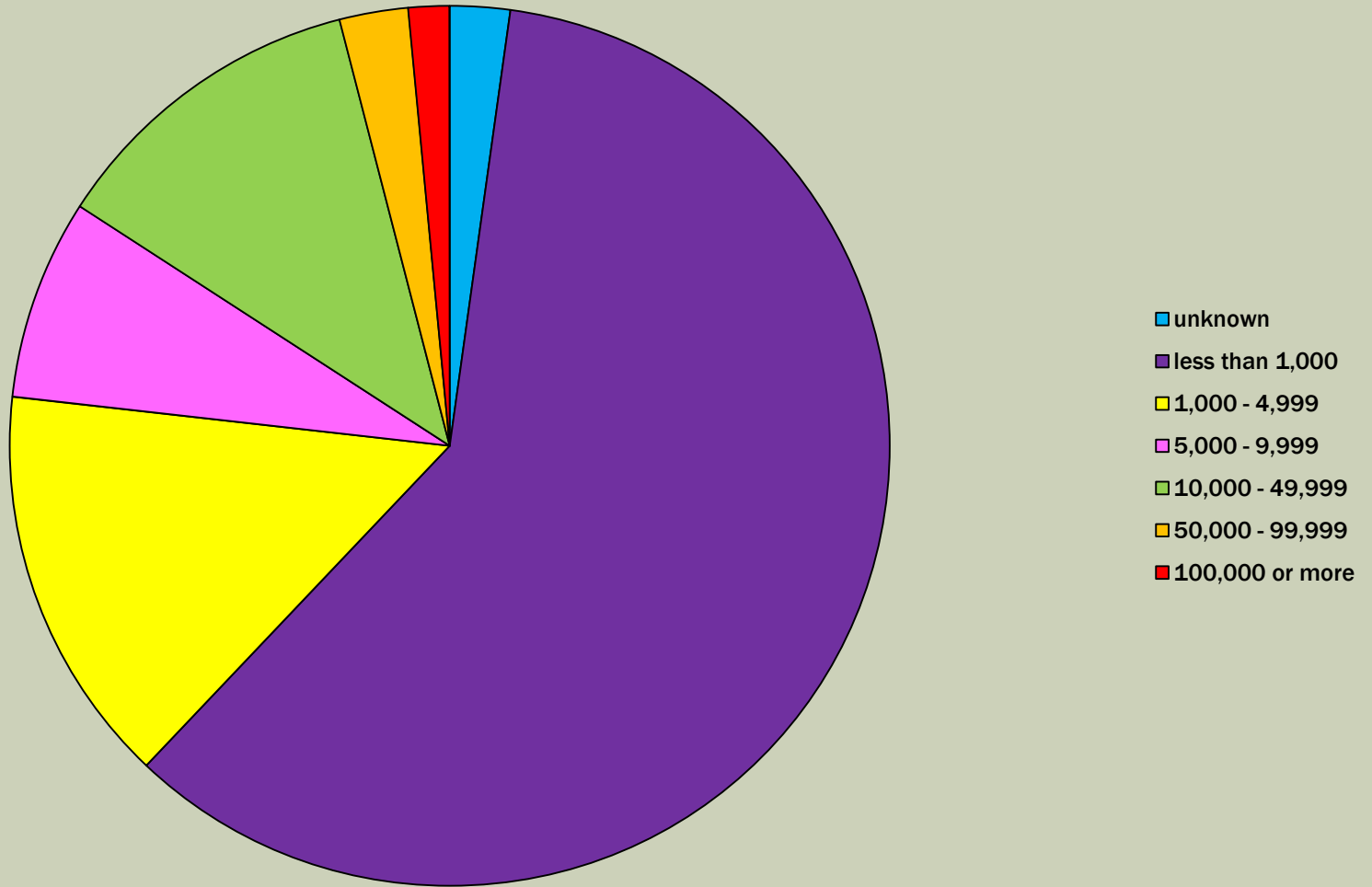


# SSOI PARTICIPANTS AND THEIR REPORTED SSOS





# SSOI SPILL REPORTED DATA FOR FY15



# 84<sup>TH</sup> LEGISLATIVE SESSION – SB912

- Limits reporting in 24 hours to a monthly summary for accidental discharges or spills that:
  - Occur at a wastewater treatment or collection facility *owned or operated by a local government*,
  - Are less than 1,000 gallons,
  - Are not associated with another simultaneous accidental discharge or spill,
  - Are controlled or removed before:
    - They enter water in the state, or
    - They adversely affect a public or private source of drinking water
  - Will not endanger human health or the environment
  - Are not otherwise subject to local regulatory control and reporting requirements.

# SB912

- Stakeholder meeting – September 15<sup>th</sup>  
(10-noon)
- Proposal agenda - January 20<sup>th</sup>
- Public comment begins – February 5<sup>th</sup>
- Agenda for adoption – May 11, 2016

**GREG DIEHL**  
**TEXAS COMMISSION ON ENVIRONMENTAL**  
**QUALITY**  
**DFW REGION OFFICE**  
**817-588-5898**  
**GREG.DIEHL@TCEQ.TEXAS.GOV**

