

Ellis County-Midlothian to Waxahachie Trail Corridor Research



The University of Texas at Arlington

Program in Landscape Architecture, School of Architecture and
The Institute of Urban Studies, The School of Urban and Public Affairs

The University Partnership Program

North Central Texas Council of Governments

The University of Texas at Arlington

Program in Landscape Architecture, School of Architecture and
The Institute of Urban Studies, The School of Urban and Public Affairs

Ellis County

City of Midlothian

City of Waxahachie

The University of Texas

Presentation Outline

Existing Corridor Information

Photo Inventory: Existing Corridor Areas and Character

Summary Analysis and Concept

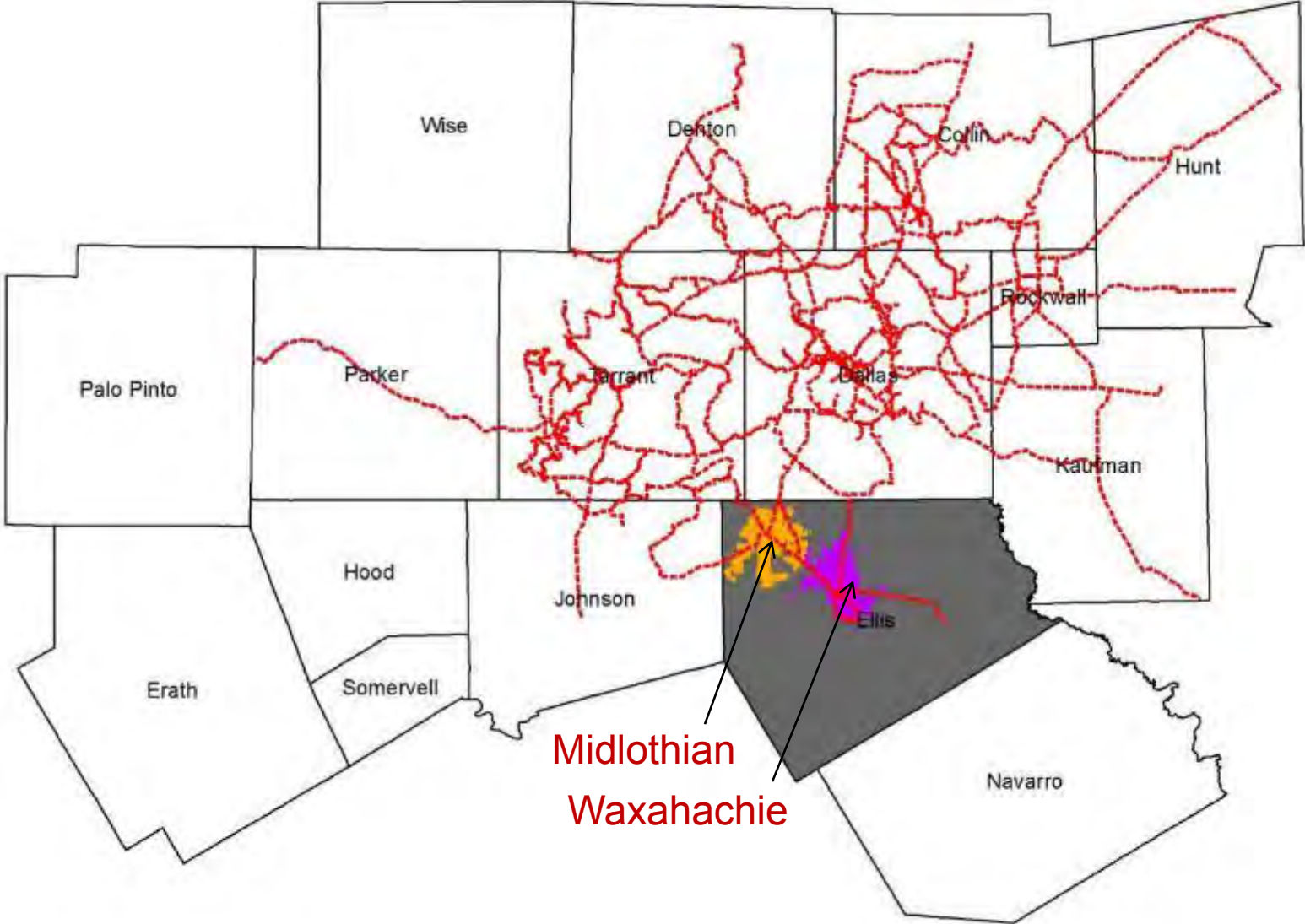
Trail Routing Alternatives

Key Issues and Feedback

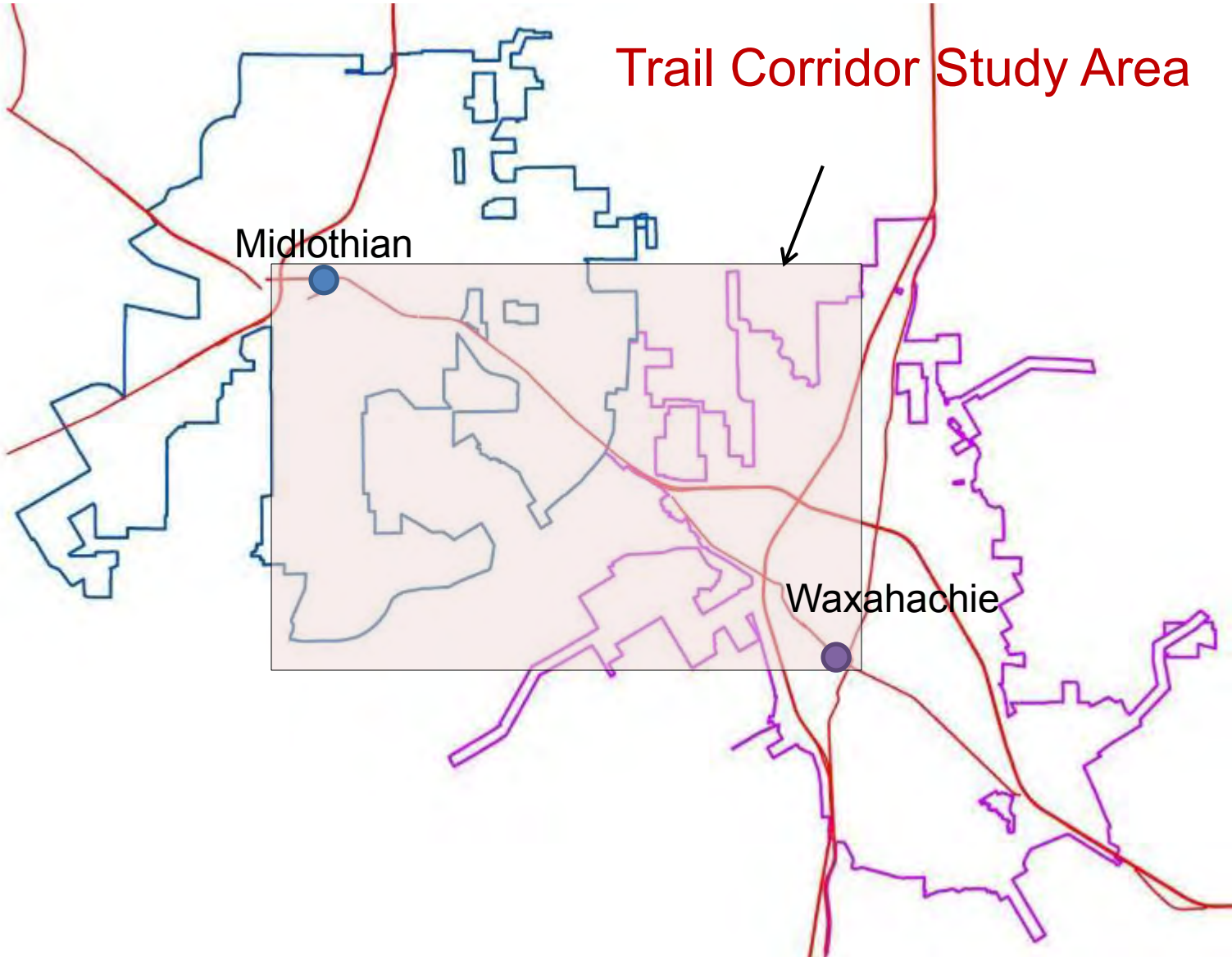
Recommended Trail Plan

Moving Forward

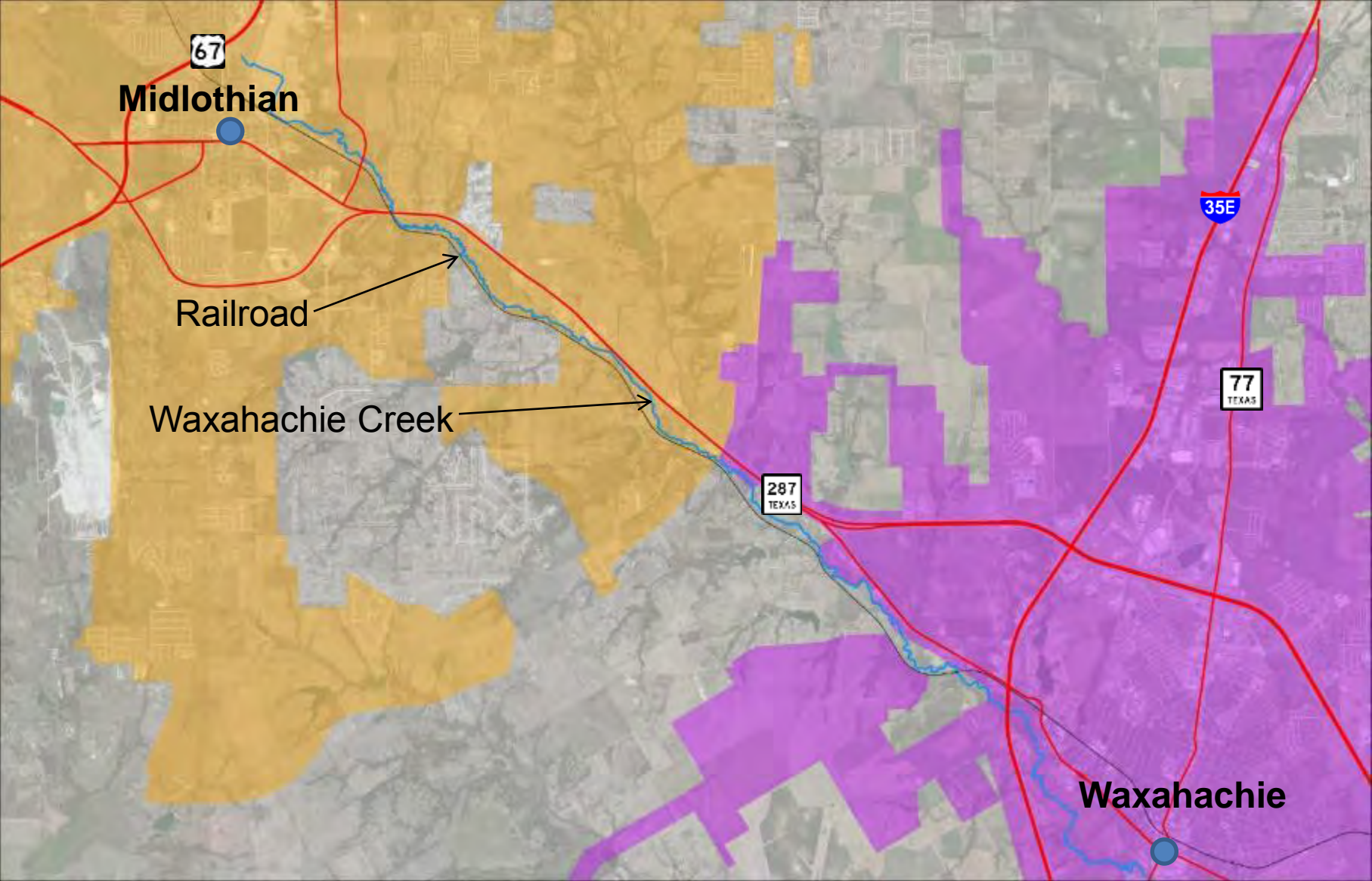
The Regional Veloweb, 2010



Study Area



The Trail Corridor



Midlothian-Waxahachie Corridor Inventory

Natural Features

- Creeks and Streams
- Lakes
- Vegetation & Land Cover
- 100 Year Flood Plain

Human Features

- Roads and Highways
- Schools
- Cemeteries
- Parks
- Railroad

Land Use

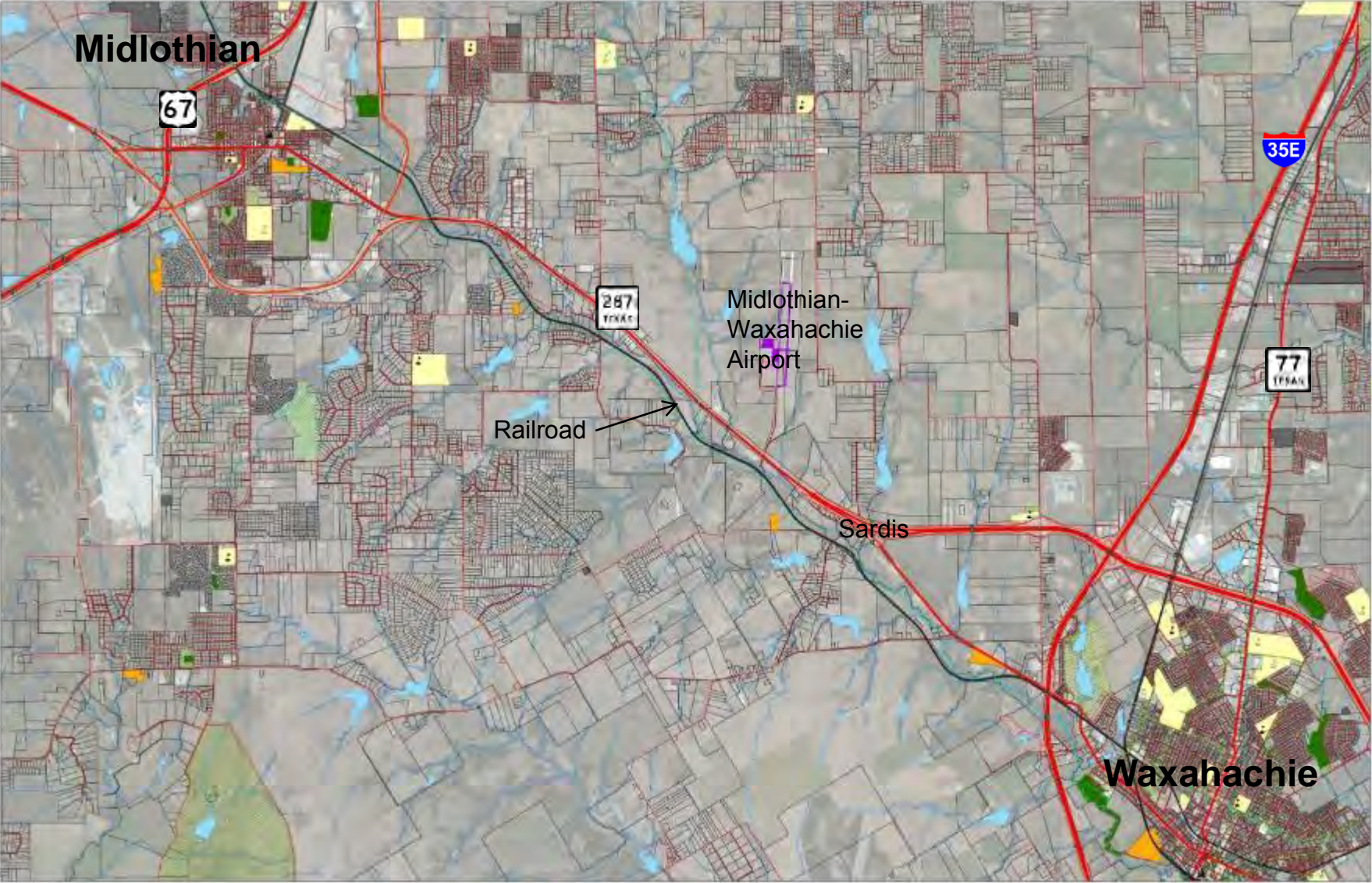
- Land Use
- Parcels

Natural Features Inventory



- Streams and Creeks
- Deciduous Forest
- 2013 Flood Plain
- Lakes
- Evergreen Forest

Human Features Inventory



- Legend**
- City/ies**
 - Educational Facilities**
 - Type
 - Primary Education
 - Private Education
 - Secondary Education
 - Trails**
 - Trail Type
 - Existing Trail
 - Future Trail
 - On Road Like Lane
 - Greenway
 - Future Community Run
 - Regional Greenway 2010
 - Future Town & Rail
 - Transit Rail
 - Highway
 - Highway
 - Highway
 - Land Use - Rail Road**
 - Land Use - Urban**
 - Parks**
 - Land Use - Field**
 - Land Use - Suburban**
 - Waters**
 - Water**
 - Creeks and Rivers**

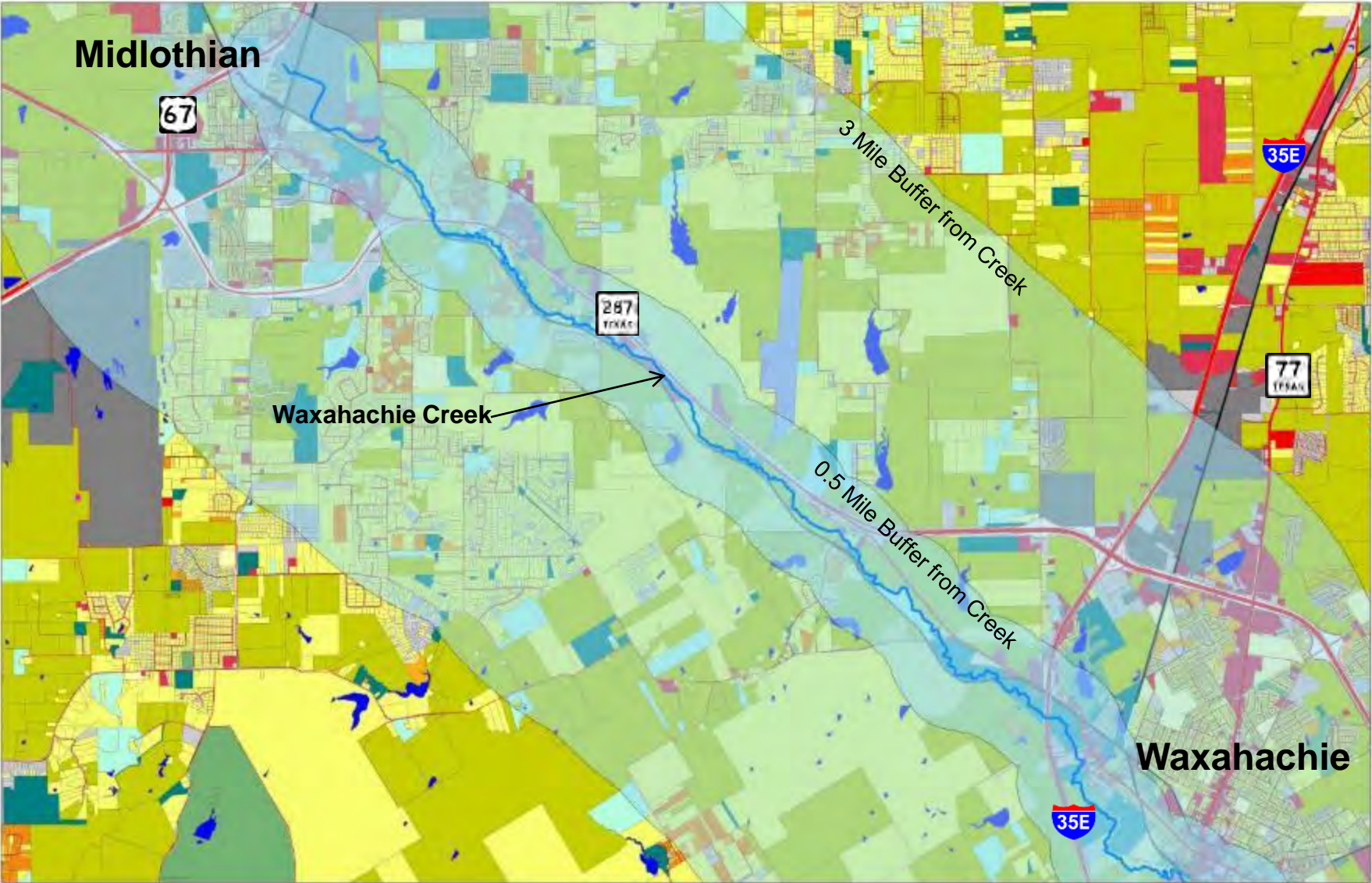


- Parks**
- Highways**
- Roads**
- Primary Education**
- Private Education**
- Secondary Education**
- Rail/Future Transit**

Land Use/Parcels



Proximity to Trail Corridor



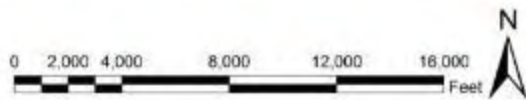
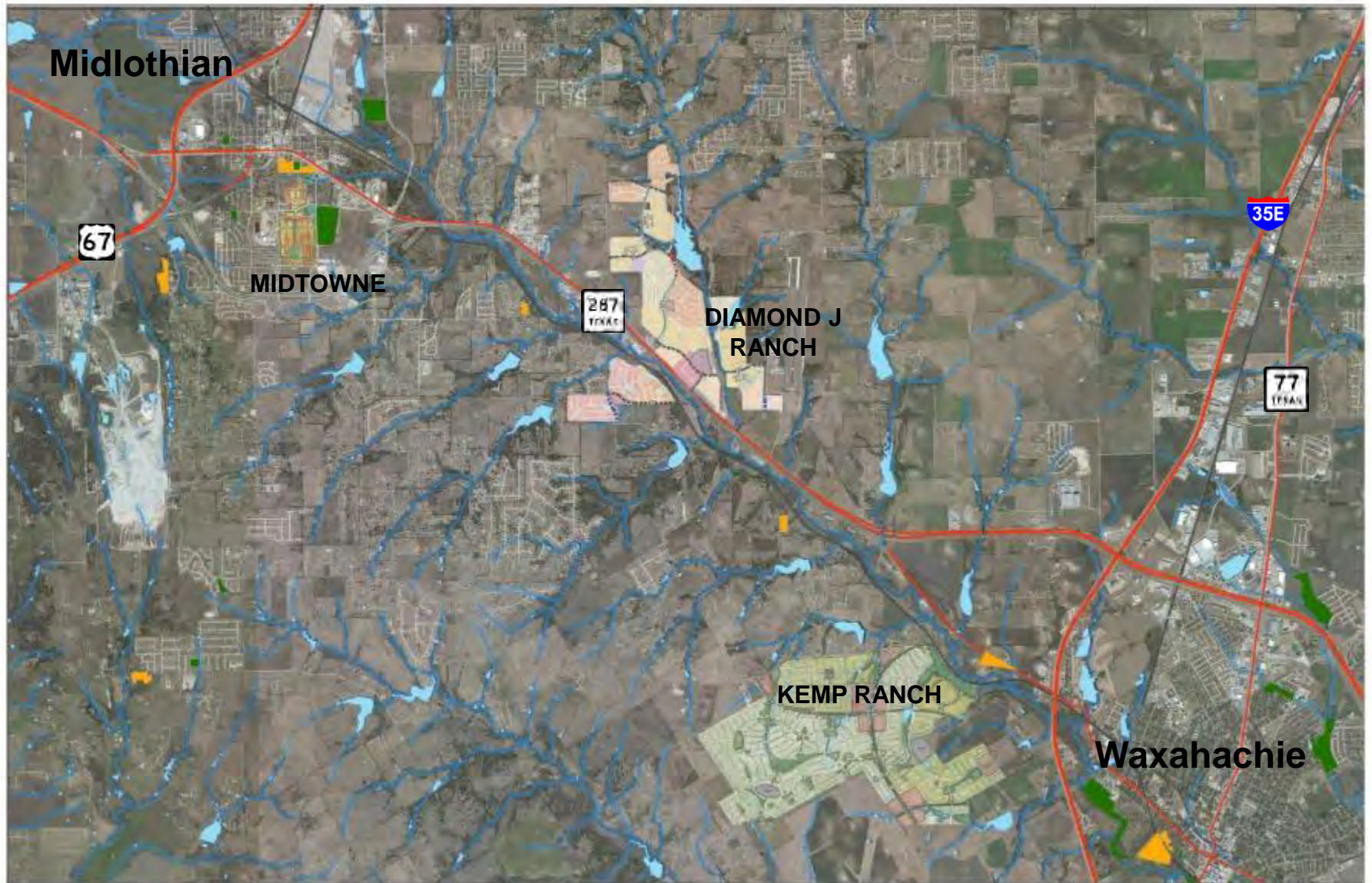
- Legend**
- Highways
 - Roads
 - Pavement
 - Land Use
- CATEGORY**
- Commercial
 - Education
 - Farmland
 - Group quarters
 - Highway
 - Improved acreage
 - Industrial
 - Industrial/warehouse
 - Leisure
 - Large building
 - Medium density
 - Multi-family
 - Parking
 - Public institution
 - Religious
 - Residential
 - Recreational
 - Roadway
 - Single family
 - Small water bodies
 - Timberland
 - Under construction
 - Utility
 - Water
 - Waste



Ranchland/Farmland
 Residential Acreage
 Timberland
 Commercial

0.5 mi = approx. 10 min. walk 3 mi = approx. 15 min. bicycle ride

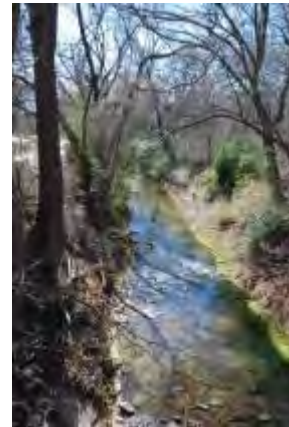
Recent and Future Development Plans



City of Waxahachie



Getzendaner Memorial Park



Trail Map A



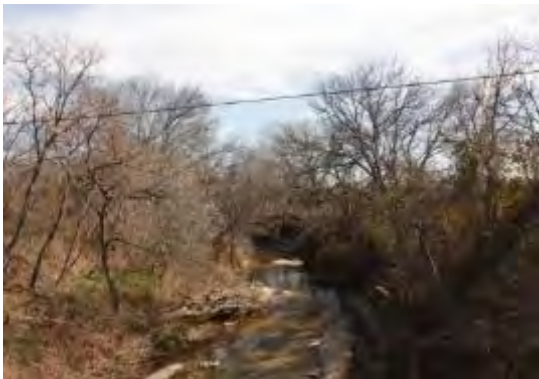
Trail Map A



Trail Map A



Trail Map B



Trail Map B: Sardis



Trail Map C: Airport Access



Trail Map C



Google Maps, 2014



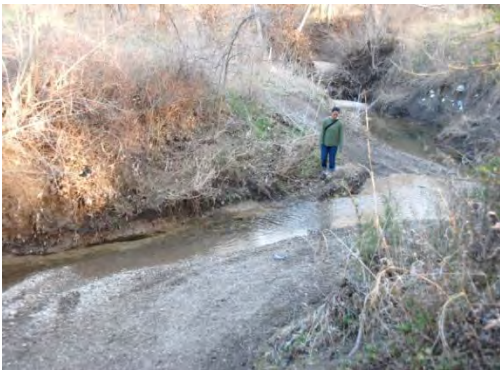
Trail Map C: Community Access



Trail Map D



Trail Map D



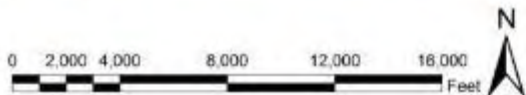
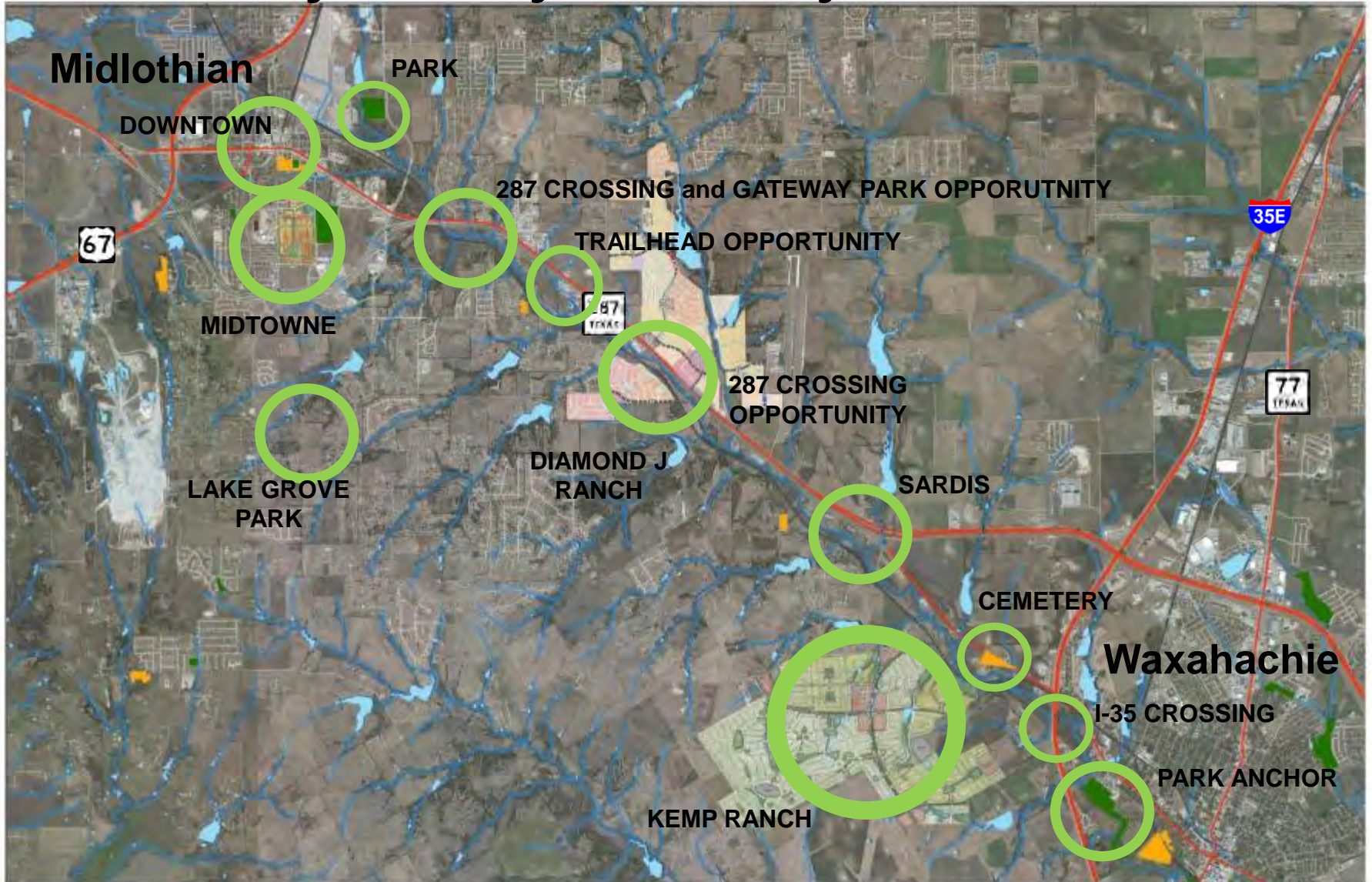
Trail Map D



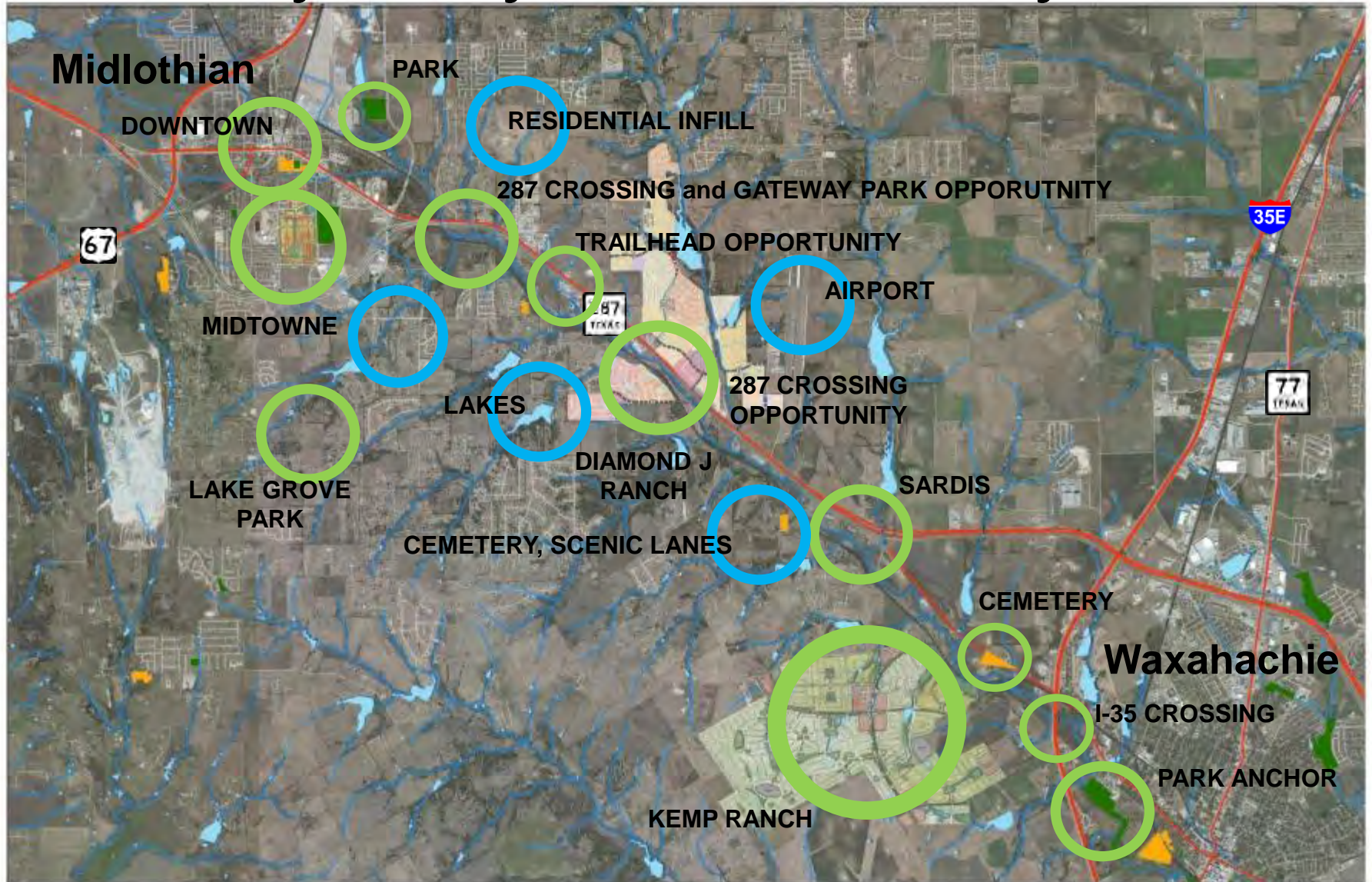
City of Midlothian



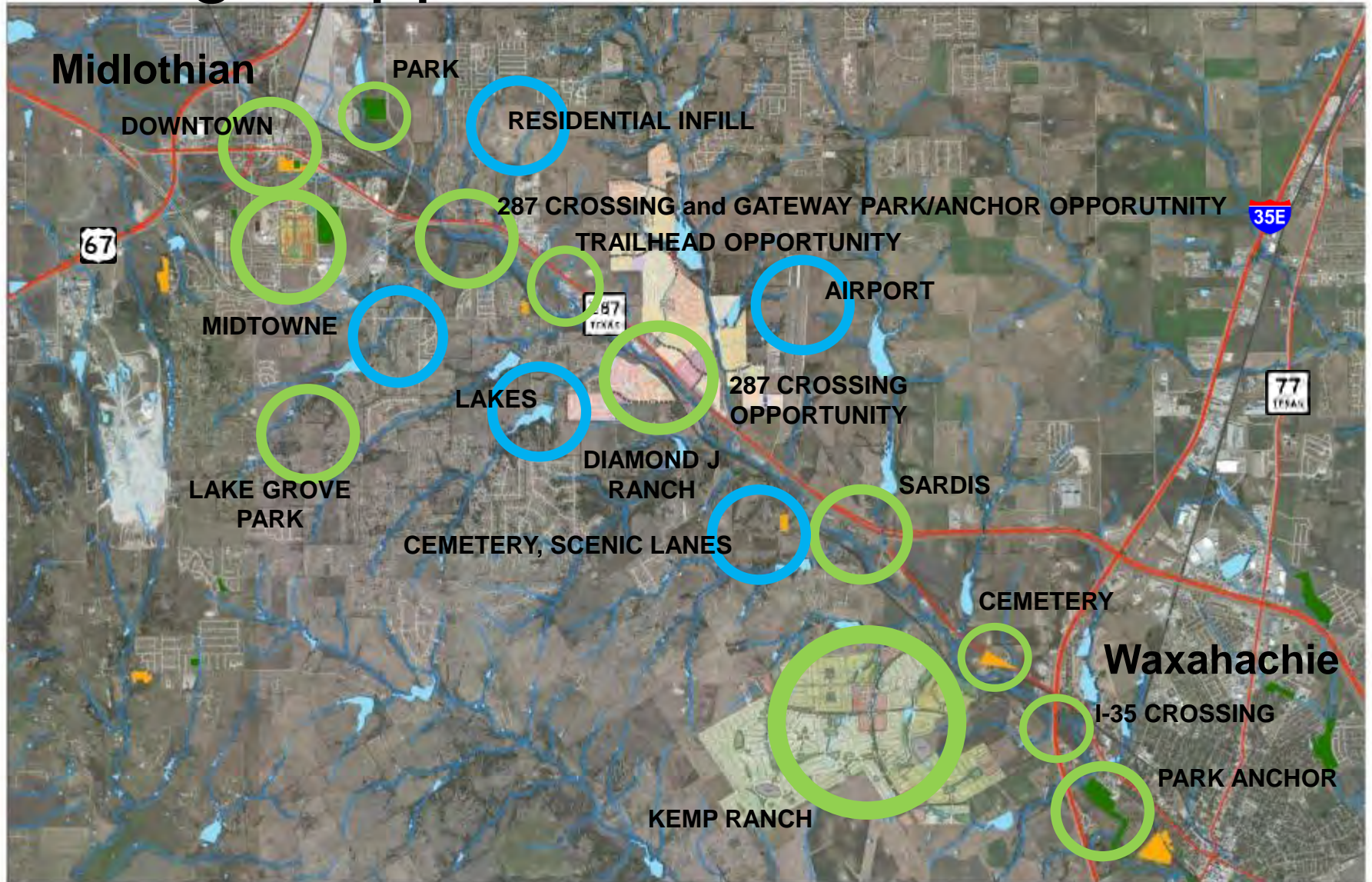
Summary Analysis: Key Sites



Summary Analysis: Community Access



Linkage Opportunities




Exploring Alignment Alternatives


- Generally, yellow route maximized creek views and adjacency
- Orange route more closely follows rail r.o.w. where feasible
- Optional spur linkages to resources and community access
- Connections to the city trail systems





Legend


 Orange Route


 Yellow Route


 Trail Head


 Gateway
park/trailhead


 Pedestrian and Bike
Bridge only

 Pedestrian and Bike
underpass

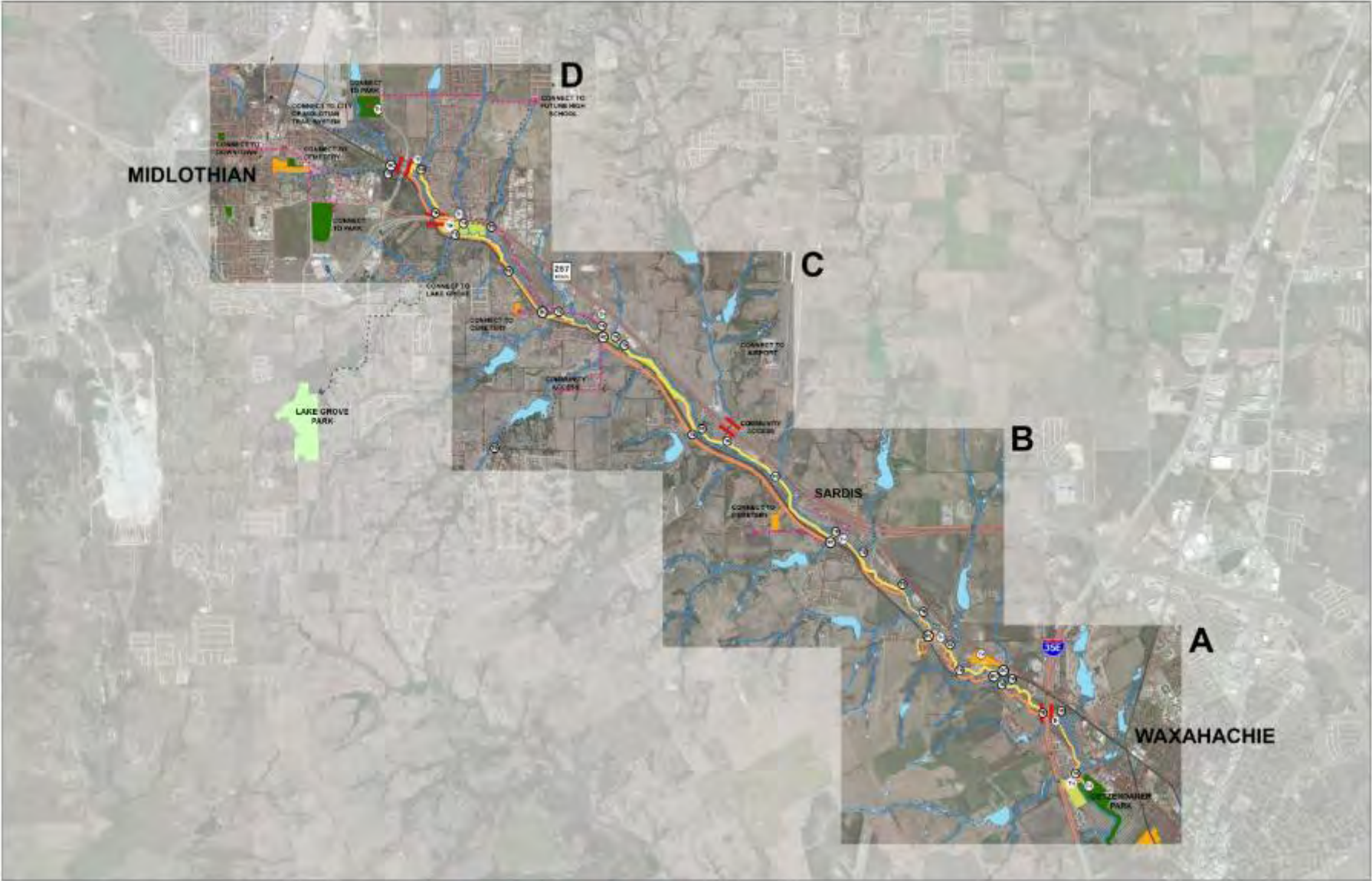
 Railway Crossing

 Community Access
Bikeway

 Community Access
Trail

 Proposed Park
Expansion

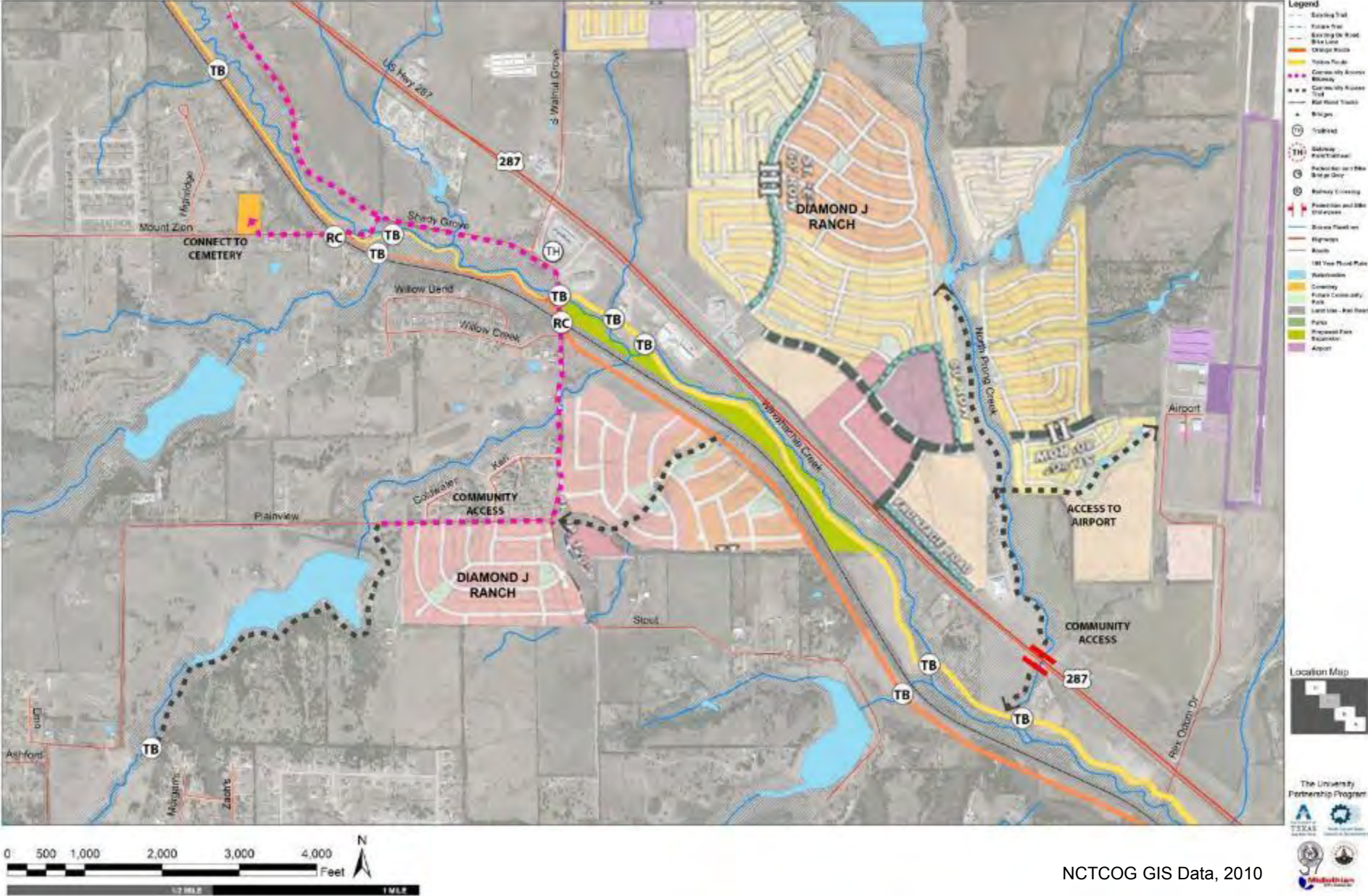
Trail Route Alternatives



Trail Route Alternatives Map A

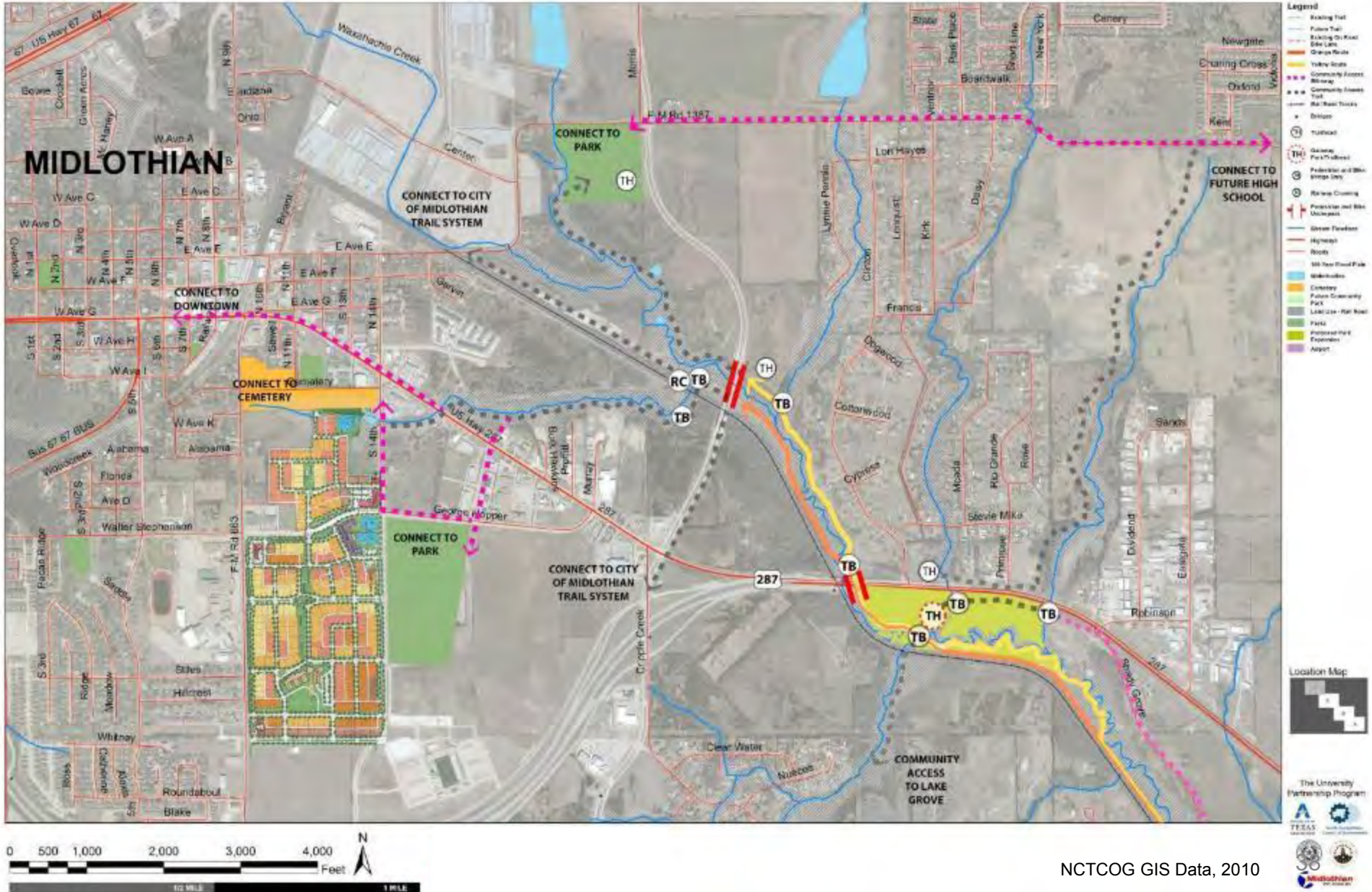


Trail Route Alternatives Map C



NCTCOG GIS Data, 2010

Trail Route Alternatives Map D



MIDLOTHIAN



D

C



B



A



Length: **11.1 miles** **11.3 miles**

Gateway acquisitions:

2 **2**

Trail heads:

7 **7**

Bridges:

15 **17**

RR Crossings:

6 **2**

Underpasses:

1 **1**

Properties Crossed:

50 **65**

Miles of RR r.o.w.:

6.6 **.6**

**ORANGE
ROUTE**

**YELLOW
ROUTE**

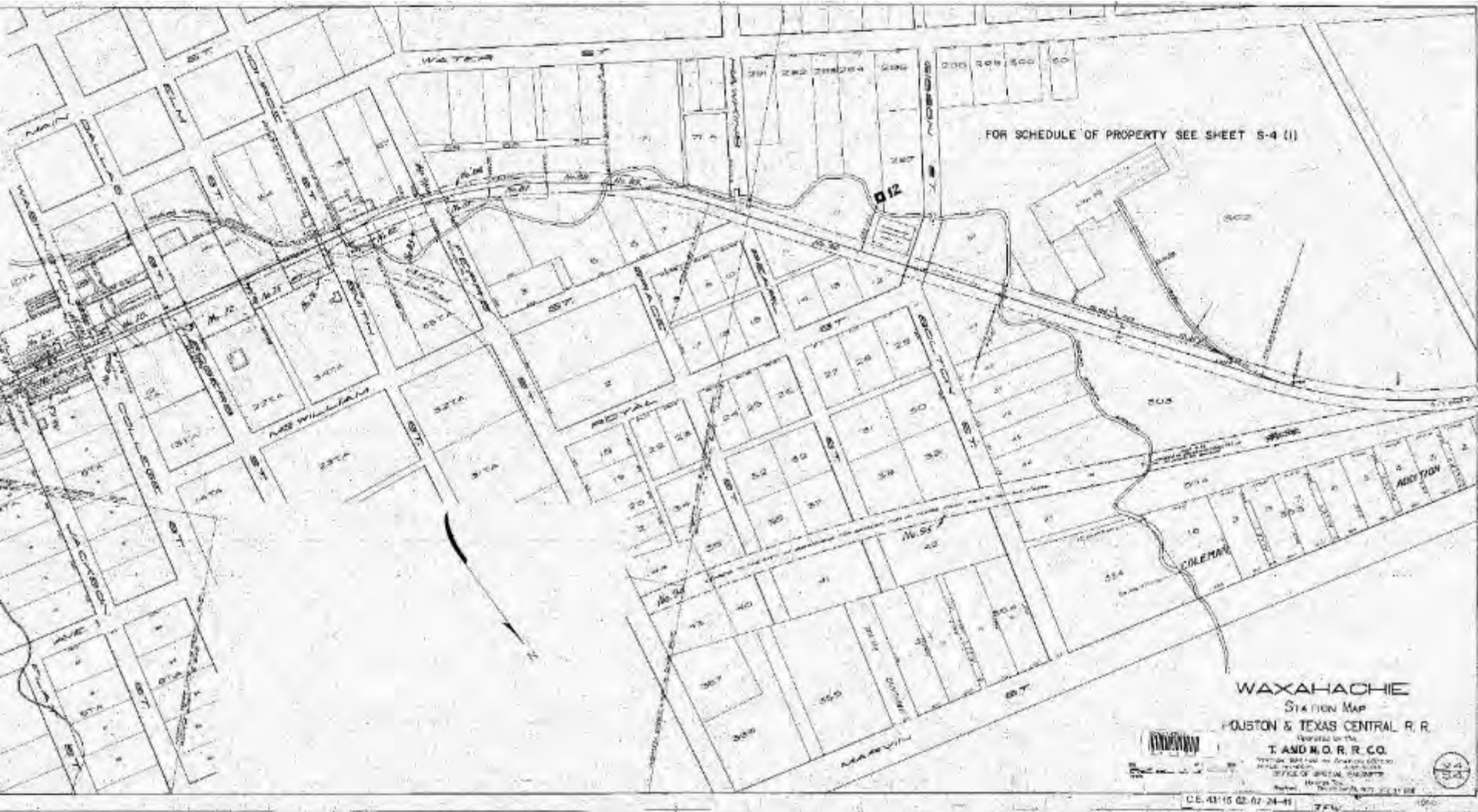
Public Meeting *October 13, 2014*



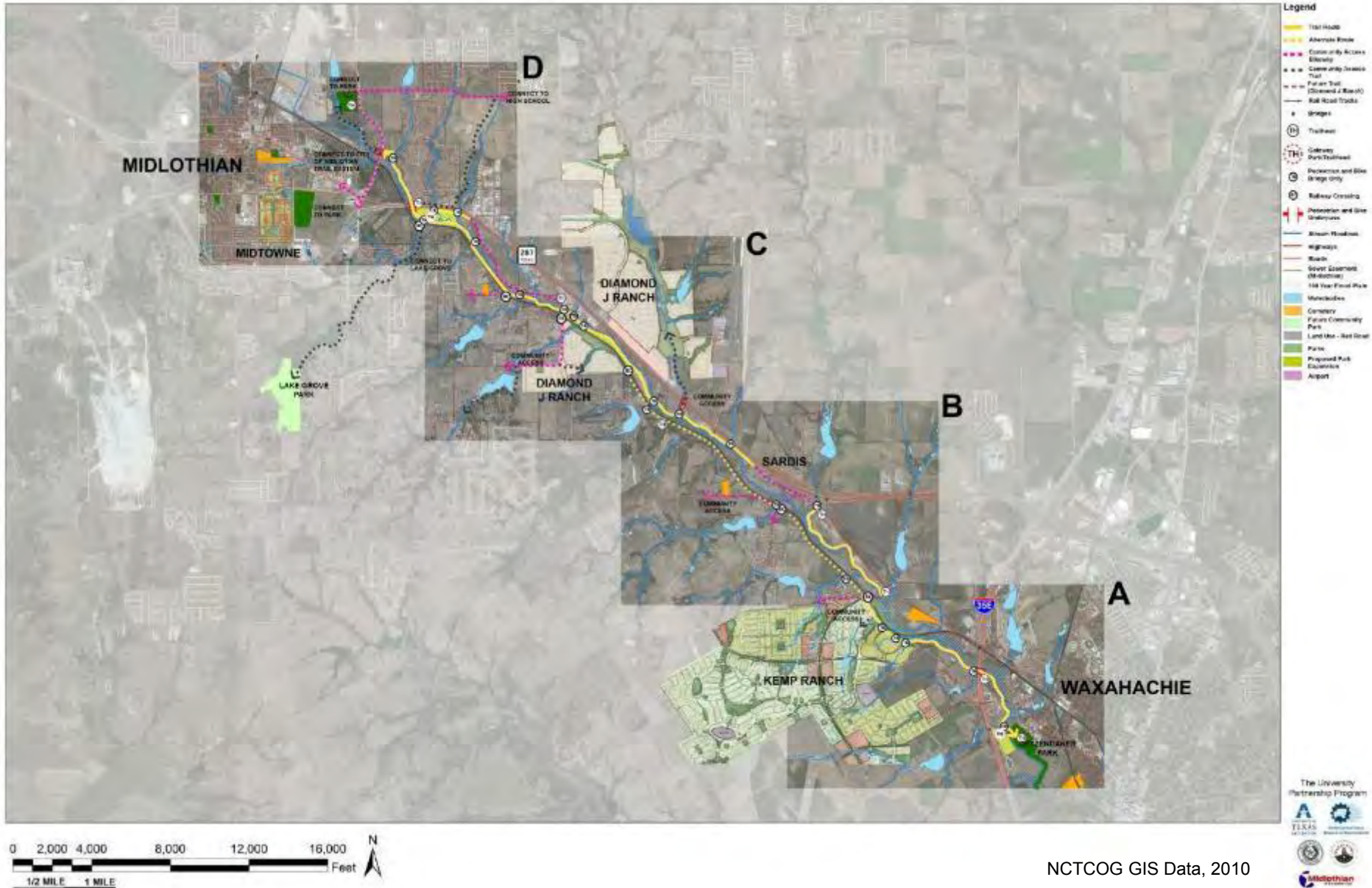
Public Meeting *October 13, 2014*

- Support for continuous multi-use trail linking the cities
- Support for collaborative efforts between the cities
- Concerns over trail route crossing specific private properties, especially in the Sardis area
- Concerns over trail interrupting use of adjacent private property and businesses, especially in the Sardis area.

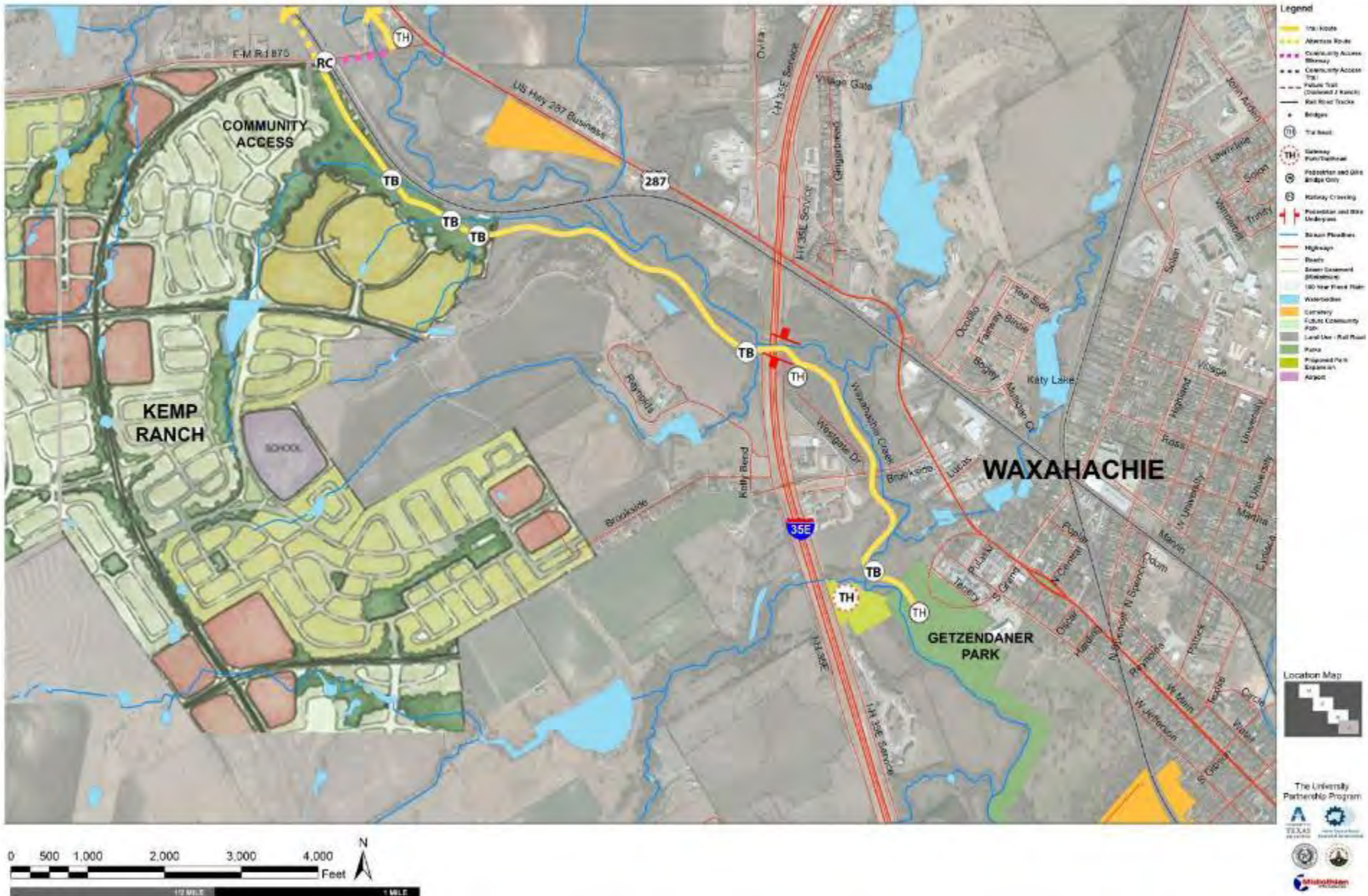
Coordination with Union Pacific



Recommended Trail Plan



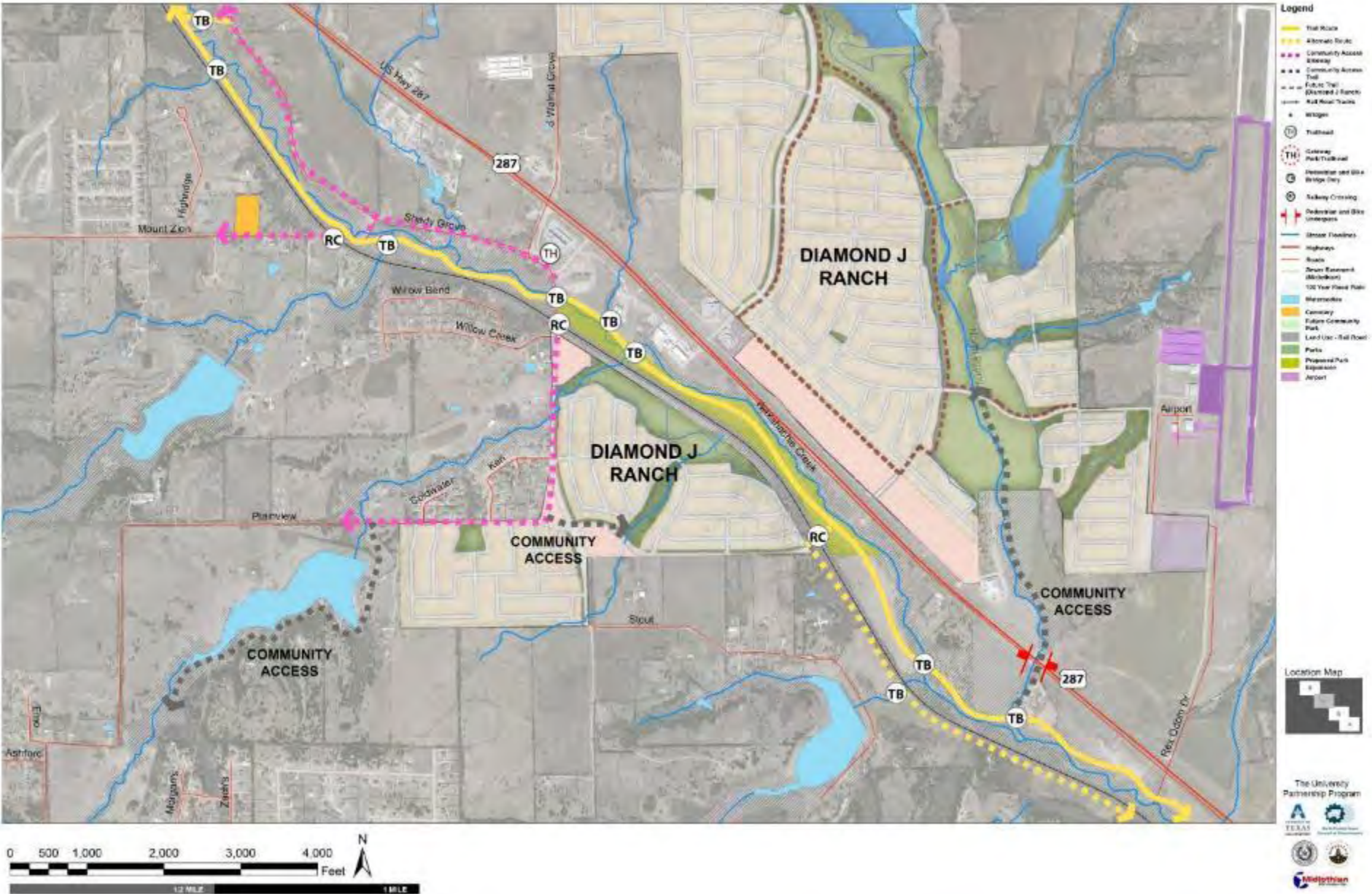
Recommended Trail Plan Map A



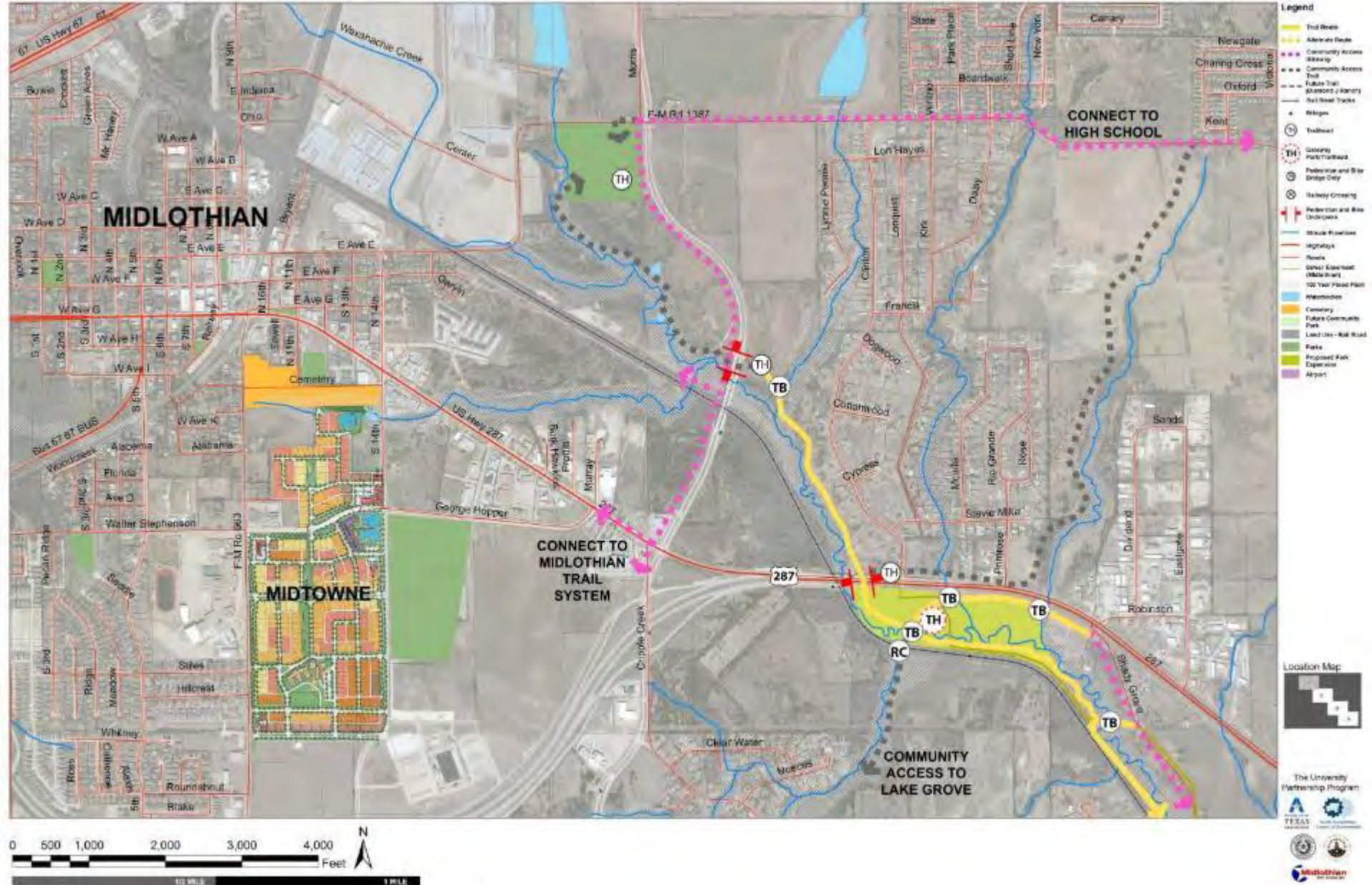
Recommended Trail Plan Map **B**



Recommended Trail Plan Map C



Recommended Trail Plan Map D



Moving Forward:

- Adopt the plan as amendment to parks portion of the comprehensive plan.
- Identify and pursue funding sources for land acquisitions and trail system development.
- Conduct necessary engineering, environmental, and detailed design/construction packages in cooperation with potential partners.
- Construct trail system.
- Maintain the system.

Acknowledgements

- North Central Texas Council of Governments
- The University of Texas at Arlington
Program in Landscape Architecture, School of Architecture and
The Institute of Urban Studies, The School of Urban and Public Affairs
- Ellis County
- City of Midlothian
- City of Waxahachie
- The University of Texas



Key System Elements: Quantifications

Length:	11.1 miles	11.3 miles
Gateway acquisitions:	2	2
Trail heads:	7	7
Bridges:	15	17
RR Crossings:	6	2
Underpasses:	1	1
Properties Crossed:	50	65
Miles of RR r.o.w.:	6.6	.6
	ORANGE ROUTE	YELLOW ROUTE