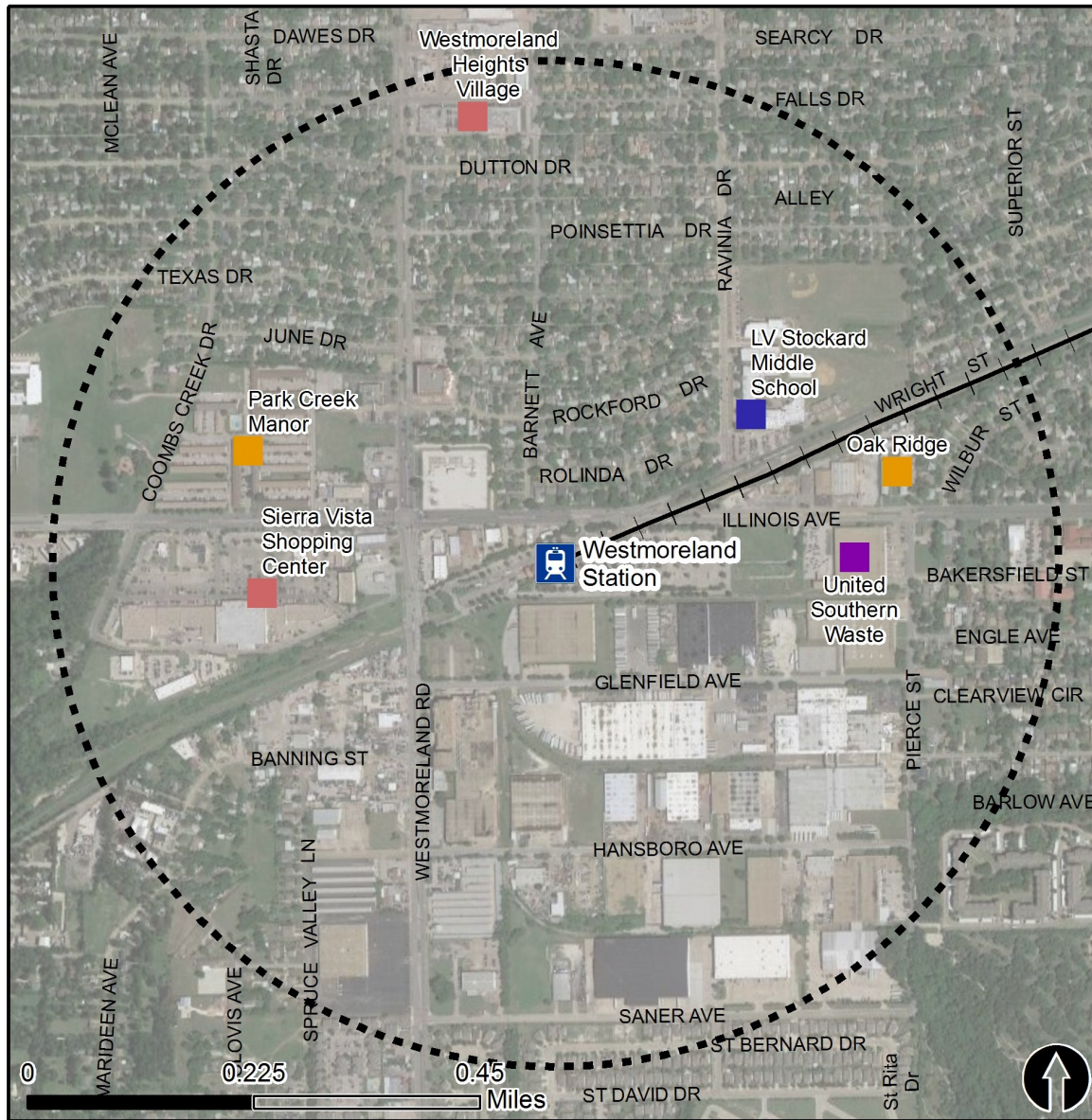


# Rail Station Fact Sheet – Westmoreland Station



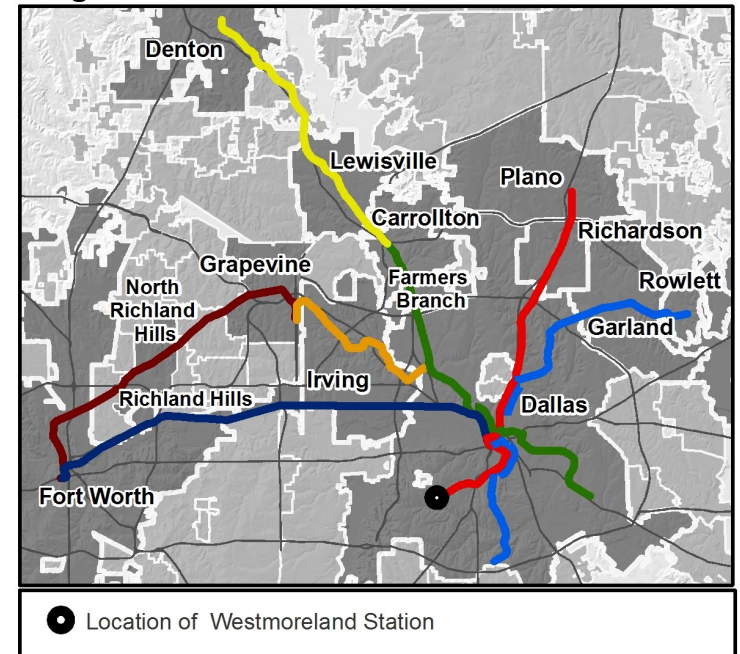
North Central Texas  
Council of Governments



## Station Overview

Westmoreland Station is located near the intersection of West Illinois Avenue and South Westmoreland Road in Dallas. The station opened in 1996 and is currently the southern terminus for the DART Rail Red Line.

## Regional Rail Transit Lines



0.5 Mile  
Station Buffer



Rail Stations



Rail Lines

## Key Developments



Education



Industrial



Multi-Family



Retail

# Rail Station Fact Sheet – Westmoreland Station



North Central Texas  
Council of Governments

## Station Characteristics<sup>1</sup>

Address	2646 S. Westmoreland Road
City	Dallas
Agency	Dallas Area Rapid Transit
Rail Line(s)	Red Line
Corridor	West Oak Cliff (WOC)
Year Opened	1996
Park & Ride Spaces	672

## Ridership<sup>1</sup>

2015 Avg. Weekday	2,268
2015 Avg. Saturday	1,123
2015 Avg. Sunday	939

## 2014 On-Board Transit Survey: Access Mode to Station<sup>2</sup>

Bike	1.4%
Drive Alone	8.6%
Carpool	1.5%
Walk	22.9%
Drop Off	18.8%
Other	0.8%
Transit Transfer	46.0%

## Station Area Plans and Studies

Title	Westmoreland DART Station Area Plan (part of forwardDallas!)
Publisher	City of Dallas
Year	2013
Web Location	<a href="http://dallascityhall.com/departments/pnv/strategic-planning/DCH%20Documents/pdf/WestmorelandDART.pdf">http://dallascityhall.com/departments/pnv/strategic-planning/DCH%20Documents/pdf/WestmorelandDART.pdf</a>

## Station Area Characteristics (1/2 mile radius)

### Demographics<sup>3</sup>

Total Population	14,307
Population Density (pop/sq. mile)	6,295
Average Median Age	30
Average Median Income	\$36,434.56

### Housing<sup>3</sup>

Total Housing Units	3,934
Housing Density (units/sq. mile)	1731
Percent Occupied	94%
Percent Owner-Occupied	60%
Percent Renter-Occupied	40%

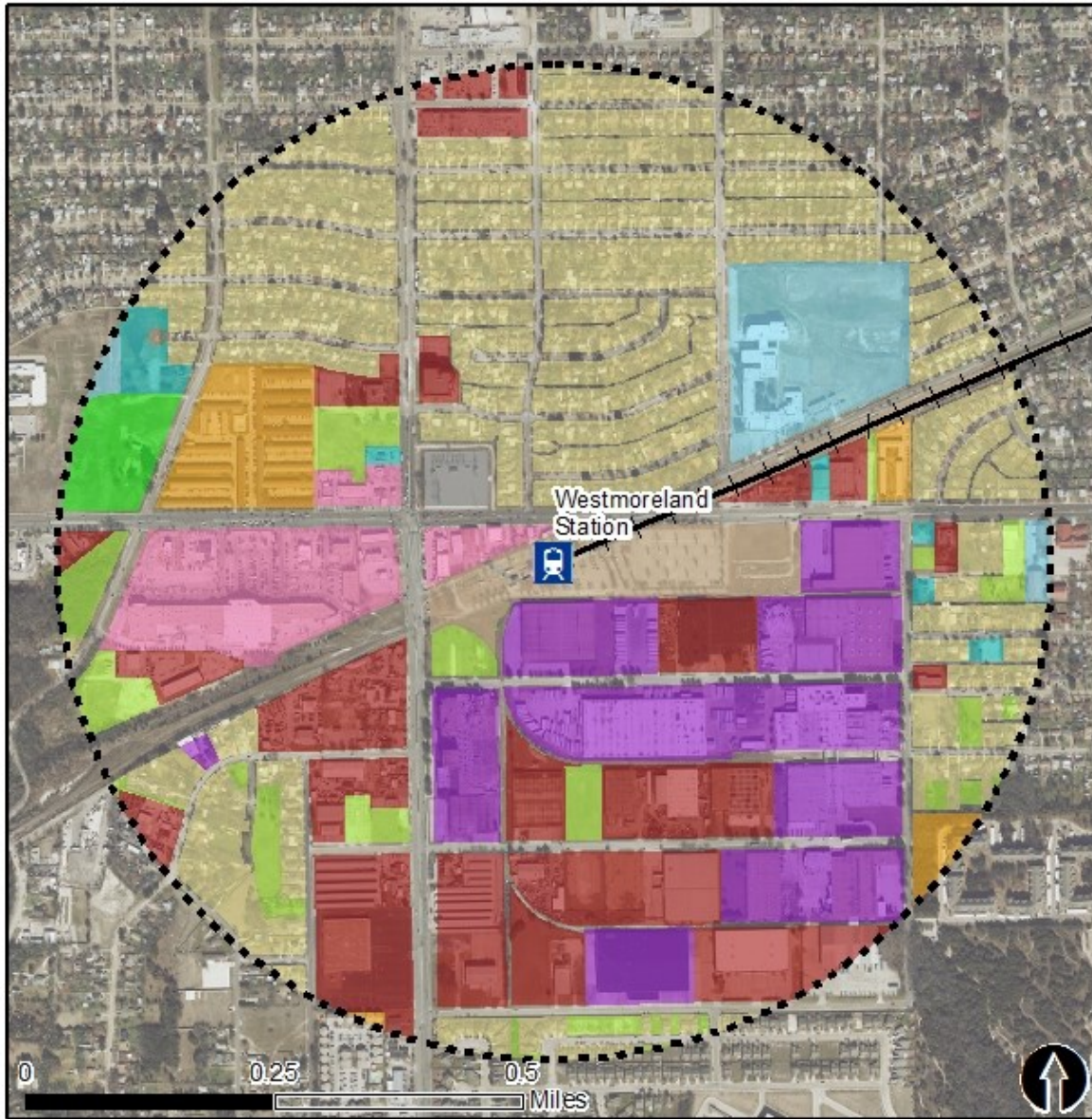
### Commute To Work<sup>3</sup>

Percent Automobile	86.2%
Percent Drive Alone	74.0%
Percent Carpool	12.1%
Percent Transit	5.7%
Percent Bike	0.2%
Percent Walk	0.4%
Percent Other	6.0%
Percent Work from Home	1.6%
Percent Zero-Vehicle Households	11.2%

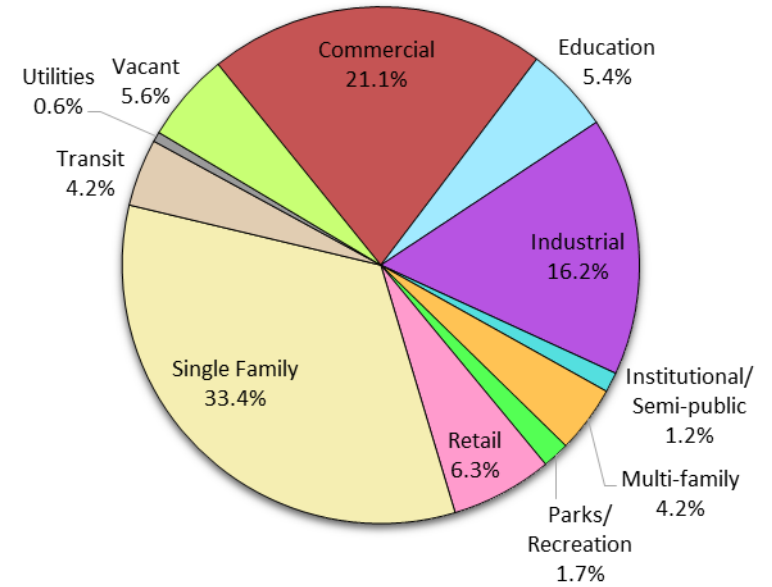
### Traffic Survey Zone 2017 Employment Forecast<sup>2</sup>

Total Jobs	4,557
Job Density (jobs/sq. mile)	1,889

# Land Use (2016) – Westmoreland Station



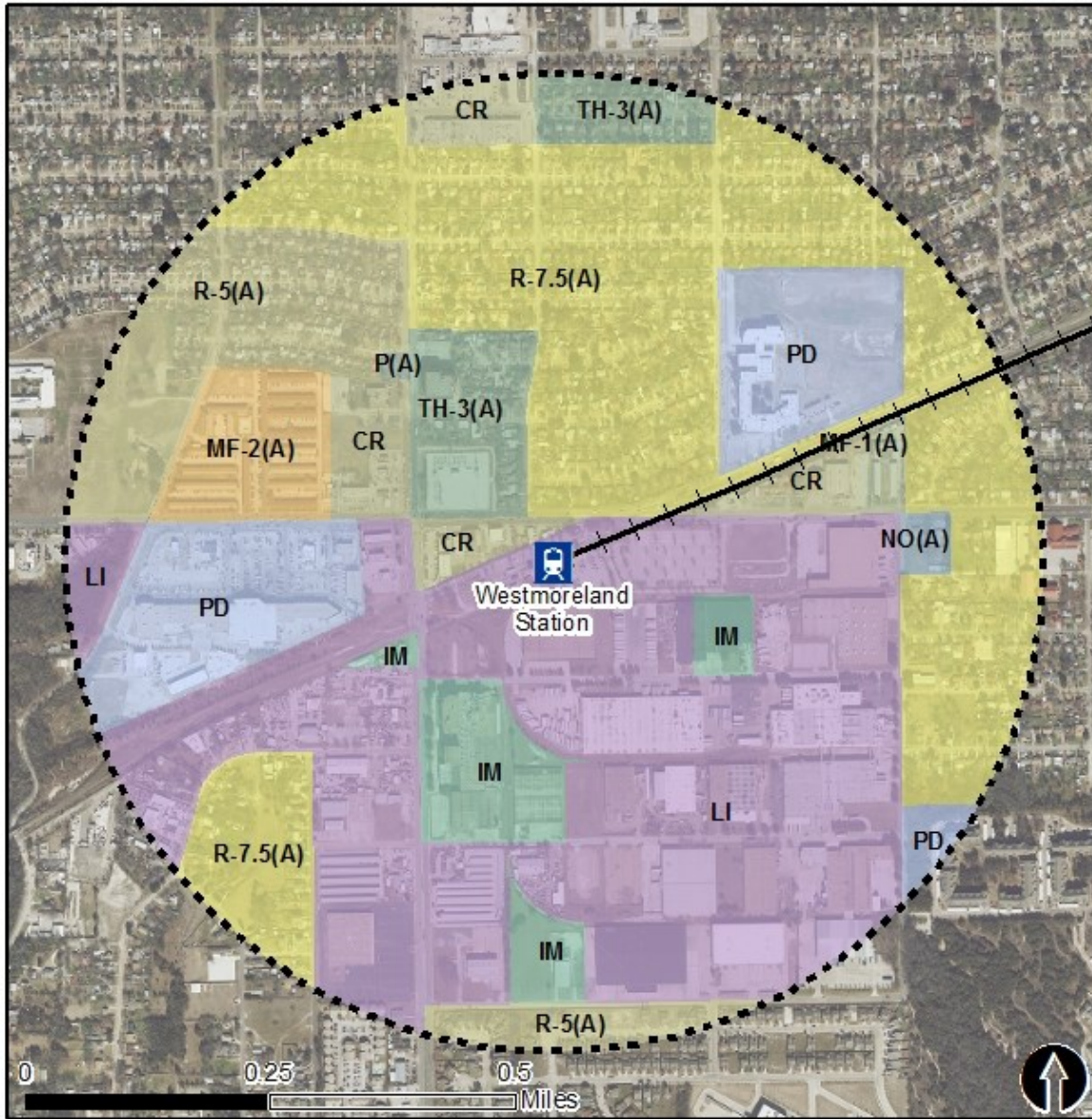
### Land Use Percentages



0.5 Mile  
Station Buffer

Rail Stations Rail Lines

# Zoning (2016) – Westmoreland Station



## Zoning Districts

- CR – Community Retail
- IM – Industrial Manufacturing
- LI – Light Industrial
- MF-1, MF-2 (A) – Multi-family
- NO(A) – Neighborhood Office
- P(A) – Parking
- PD – Planned Development
- R-5, R-7(A) – Single Family
- TH-3(A) – Townhouse

For more information on zoning, please visit the City of Dallas Zoning website at:

<http://gis.dallascityhall.com/zoningweb/>



0.5 Mile  
Station Buffer



Rail Stations



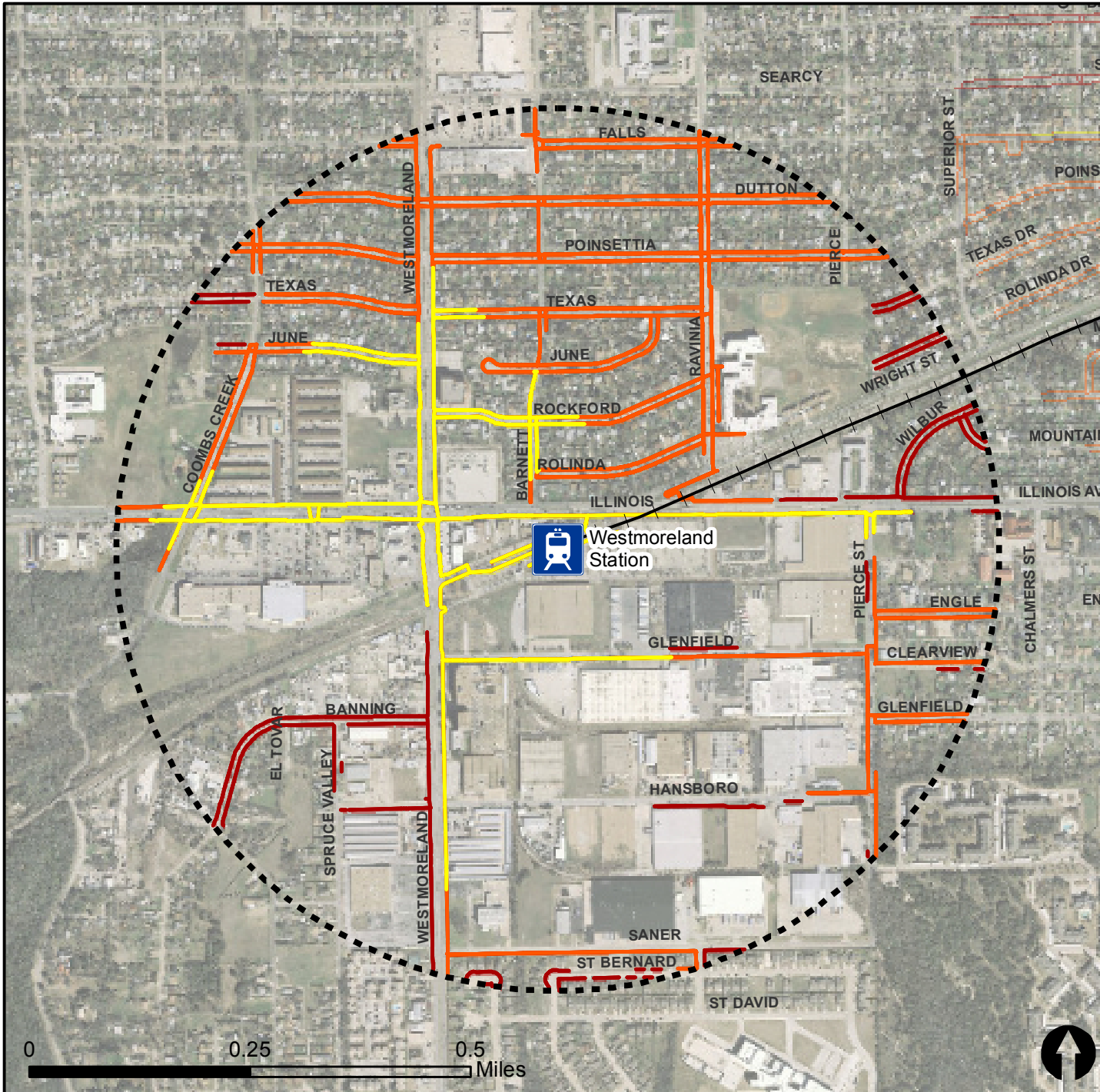
Rail Lines

# Pedestrian Routes to Rail - Westmoreland Station

Last Updated: February 2015



North Central Texas  
Council of Governments



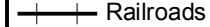
## Legend



Rail Stations



0.5 Mile  
Station Buffer



Railroads



Existing sidewalk facilities within a  
0.5 mile walk distance



Existing sidewalk facilities greater than  
a 0.5 mile walk distance

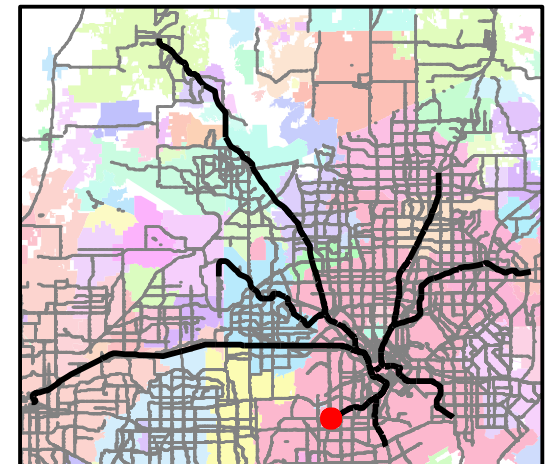


Existing sidewalk facilities that are  
disconnected due to a gap in the  
network

## Project Overview

The Pedestrian Routes to Rail study identifies all existing pedestrian facilities within a half-mile radius of existing light rail and commuter rail stations in the Dallas-Fort Worth region based on 2014 data. ArcGIS Network Analyst tool was used to identify continuous facilities that are less than or greater than a half-mile actual walking distance to a station. The maps also reflect existing facilities that are disconnected due to gaps or other barriers not allowing a continuous pedestrian route to a station. The maps do not reflect the condition or ADA compliance of the existing infrastructure. More information on the Routes to Rail study and methodology is available at:

[nctcog.org/RoutesToRail](http://nctcog.org/RoutesToRail)

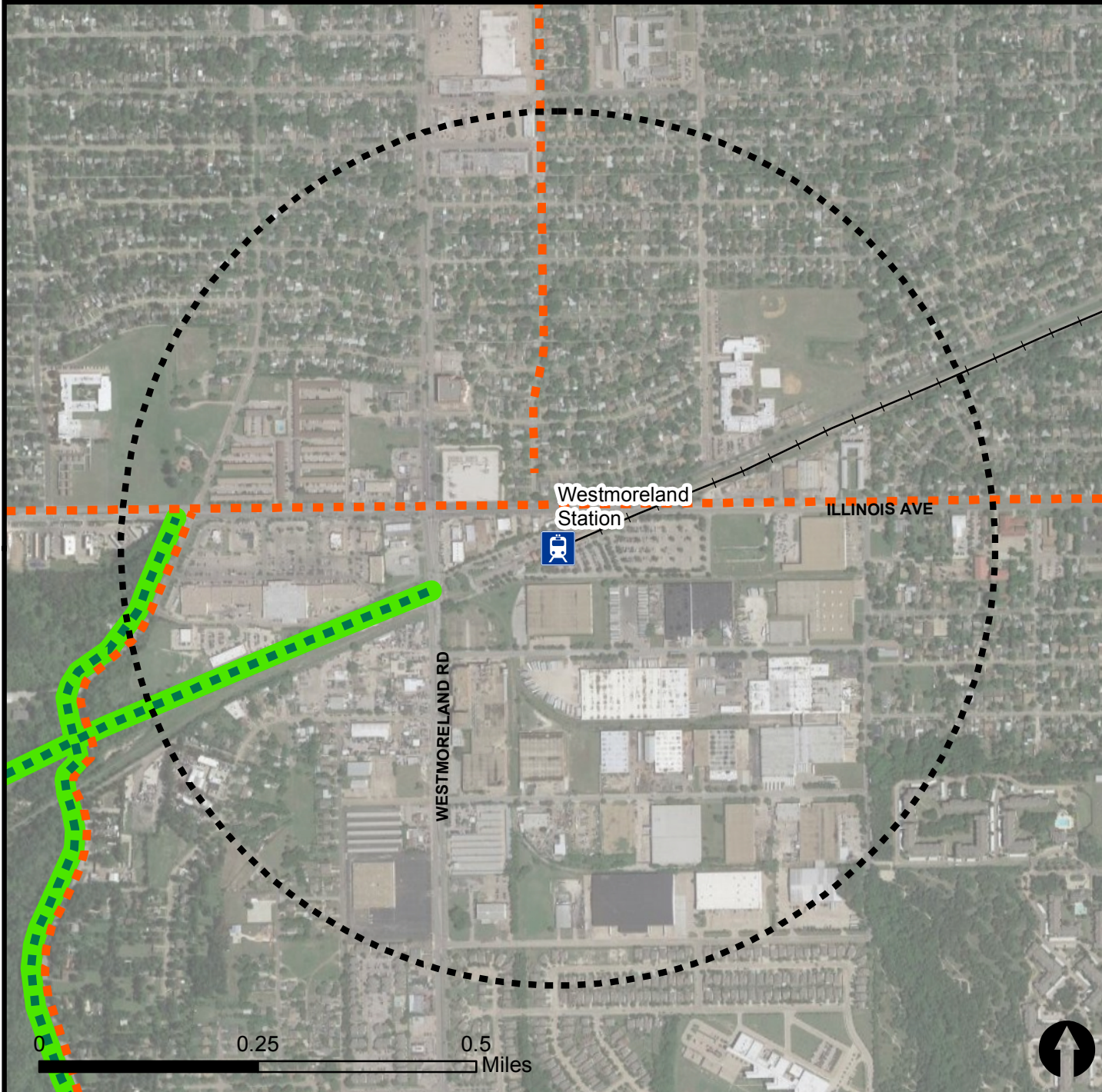


# Bicycle Routes to Rail - Westmoreland Station

Last Updated: October 2016



North Central Texas  
Council of Governments



## Legend



Rail Stations



0.5 Mile  
Station Buffer



Rail Lines



On-Street Bikeway, Existing



On-Street Bikeway, Planned



2040 Veloweb



Off-Street Path, Existing



Off-Street Path, Planned

## Project Overview

The Bicycle Routes to Rail study identifies all existing and planned bikeways in proximity to existing or under-construction light rail and commuter rail stations in the Dallas / Fort Worth region based on 2016 data. The maps reflect off-street paths (trails) and streets designated by local adopted master plans for dedicated bikeways (e.g. bike lanes, cycle tracks) located on the street. In accordance with the Texas Transportation Code, bicyclists have a right to the road. As such, the map does not reflect other roadways around the station that may have signed bike routes or by state law may be used by bicyclists. More information about the Routes to Rail study and methodology is available at:

[nctcog.org/RoutesToRail](http://nctcog.org/RoutesToRail)

