

# Green Business Certification

North Central Texas Stewardship Forum

March 11, 2015



# Recycling



Single Stream

10,804 Tons



Organics

3,501 Tons



Construction Debris 59,590 Tons

# Green Seminars

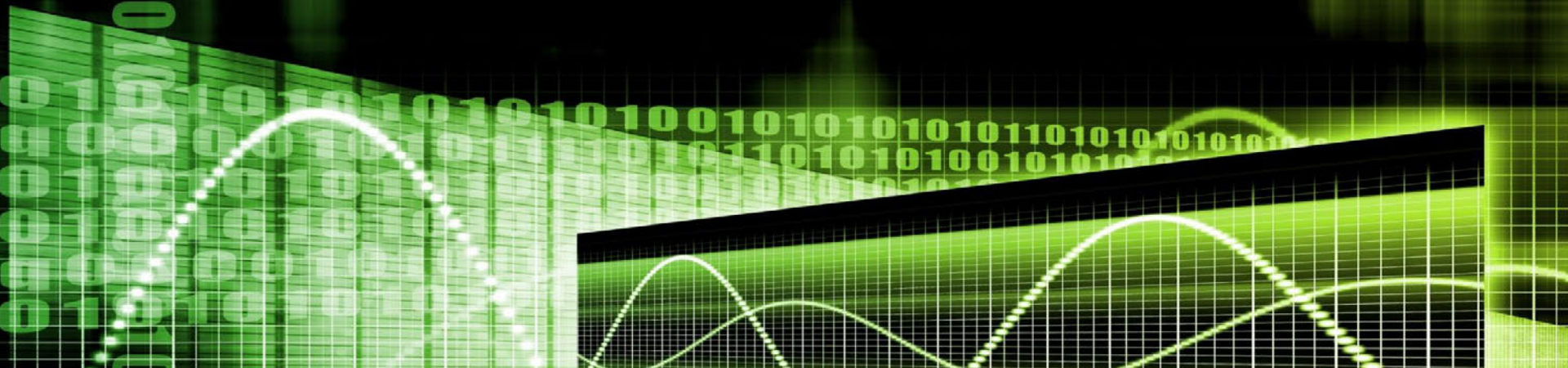


# Other Programs



# Comparison Matrix

- Categories
- Website
- Technology
- Owner/tenant
- Renewal Period
- Verification
- Promotion
- Advertising
- Recognition
- Staffing
- Cost
- Regulation

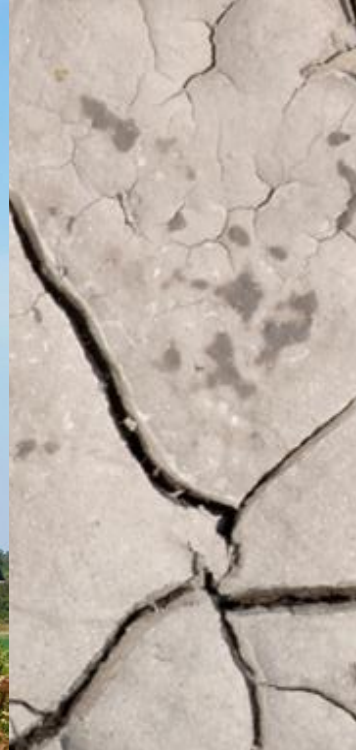


# Green Business Certified



**CITY OF PLANO**

*Presented by Commercial Recycling*



# Checklist

## GREEN BUSINESS CERTIFICATION (GBC)

Business Name:  
Business Address:  
Plano, TX ZIP:



Commercial Recycling  
4200 W. Plano Parkway  
Plano, TX 75093  
972-769-4393

### OFFICE/RETAIL CHECKLIST

- General Education
- Waste Reduction
- Energy Efficiency
- Water Efficiency
- Pollution Prevention
- Sustainable Purchasing
- Innovation



### GENERAL EDUCATION REQUIRED MEASURES

1	Create Green Business Policy that highlights your commitment to sustainability.	<input checked="" type="checkbox"/>
2	Post Green Business Policy in a visible location for your employees.	<input type="checkbox"/>
3	Establish a green team to assist management with green business initiatives.	<input type="checkbox"/>
4	Provide incentives or training to encourage employee participation in ongoing GBC criteria.	<input type="checkbox"/>
5	Post GBC decal in a visible location and on company website, if applicable.	<input type="checkbox"/>
6	Schedule quarterly communications to keep employees involved in environmental improvements.	<input type="checkbox"/>

### WASTE REDUCTION REQUIRED MEASURES

1	Conduct annual assessment of your company's waste.	<input type="checkbox"/>
2	Participate in single-stream recycling.	<input type="checkbox"/>
3	Eliminate Styrofoam in break rooms.	<input type="checkbox"/>
4	Provide reusable, compostable and/or recyclable kitchenware for employee use.	<input type="checkbox"/>
5	Recycle print cartridges.	<input type="checkbox"/>
6	Recycle company-issued cell phones.	<input checked="" type="checkbox"/>

### WASTE REDUCTION OPTIONAL MEASURES

Choose 6 Measures

7	Provide filtration system for drinking water.	<input type="checkbox"/>
8	Eliminate individual disposable water bottles for employees.	<input type="checkbox"/>
9	Install hygienic, energy-efficient hand dryers in restrooms.	<input type="checkbox"/>
10	Set printer default to double-sided printing and grayscale; make double-sided copies.	<input type="checkbox"/>
11	Reduce paper documents by creating electronic files.	<input checked="" type="checkbox"/>
12	Send and receive faxes directly from computers without printing.	<input type="checkbox"/>
13	Reuse office paper for scratch paper.	<input type="checkbox"/>
14	Use marketing materials that require no envelope.	<input type="checkbox"/>



# Green Business Prerequisites



# Green Business Assessment Categories



General Education



Waste Reduction



Energy Efficiency



Water Efficiency

# Green Business Assessment Categories



Pollution  
Prevention



Sustainable  
Purchasing



Innovation

# Green Business Sectors



Office/Retail



Grocery Stores



Restaurants



Multi Family

# Green Business Cost

\$200      Twenty Five or less

\$350      Over 25

2 years

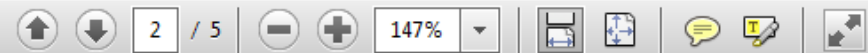
# Green Business Process

Submit Application

Submit Checklist

Schedule Verification Visit

Post Green Business Policy and Decal



- |    |   |
|----|---|
| 15 | Purchase used or refurbished equipment and/or furniture.  |
| 16 | Donate, sell or exchange used furniture, electronics and office supplies.                             |
| 17 | Use rechargeable batteries and recycle when expired.  |
| 18 | Provide an option for customers to recycle plastic bags.  |
| 19 | Offer incentives to customers who use reusable bags.  |
| 20 | Eliminate Styrofoam trays in meat and produce departments.  |
| 21 | Donate excess food to shelters or food banks.   |
| 22 | Buy products shipped in returnable, reusable or recyclable containers.                                |
| 23 | In public café or dining area, provide condiments in large containers rather than individual packets. |

### ENERGY EFFICIENCY REQUIRED MEASURES

- |   |  |
|---|--|
| 1 | Provide heating, ventilation and air conditioning (HVAC) service history prior to certification. |
| 2 | Report energy usage annually on initial certification date.                                      |

	switchers to wood switchers. We have stopped purchasing plastic utensils and will be transitioning to a compostable product made of plant starch	
<b>WASTE REDUCTION OPTIONAL MEASURES</b> Choose 8 Measures		<input checked="" type="checkbox"/>
5	Provide filtration system for drinking water. Drinking water is filtered. Bottled water coolers were eliminated; Pro-Star supplies filters.	X
6	Eliminate individual disposable water bottles for employees. Company only provides filtered drinking water for employees	X
7	Install hygienic, energy-efficient hand dryers in restrooms. Dyson hand dryers installed in areas where sound is not prohibiting	X
8	Set printer default to double-sided printing and grayscale; make double-sided copies. All capable network printers default to double-sided, grayscale. Capable copiers default to double-side	X
9	Reduce paper documents by creating electronic files. Loan documents and other misc forms are saved electronically; marketing materials to dealers are electronic	X
10	Send and receive faxes directly from computers without printing. Employees have desk-top faxing	X
11	Reuse office paper for scratch paper. Cannot do because of confidentiality.	<input type="checkbox"/>
12	Use marketing materials that require no envelope. This year all dealer show marketing materials were distributed via electronic means via apps, no paper	X

13	Purchase used or refurbished equipment and/or furniture. Printers and large copiers are used/refurbished; sent from other offices.	X
14	Donate, sell or exchange used furniture, electronics and office supplies. Electronic office equipment sent to <a href="#">Intechra-Arrow</a> for refurbishing then sold or donated by <a href="#">Intechra-Arrow</a>	X
15	Recycle print cartridges. Print cartridges go back to manufacturer for rebuild and all others are recycled at Staples for credit toward office supplies	X
16	Recycle cell phones. Green Team collects cell phones and donates to Cell Phones for Soldiers	X
17	Use rechargeable batteries and recycle when expired.	<input type="checkbox"/>
18	Promote use of reusable bags. Reusable bags were handed out at Green Team events this year	X
19	Offer incentives to customers who use reusable bags. Not applicable	<input type="checkbox"/>
20	Reuse boxes and packaging. All usable boxes and packaging received is stored and reused for outgoing packages. Damaged boxes are recycled	X
21	Provide trash and recycling containers for employees at each desk.	<input type="checkbox"/>



# DRIVE

## Auto Appearance Center Office/Retail



**INDOOR SERVICE**  
(972) 477-9100  
(417) 860-2000  
(214) 480-0043  
www.bavariangrill.com

**foursquare**  
CHECK IN HERE  
Check in to earn rewards, share your location, and explore what's nearby.  
bavariangrill.com  
@bavariangrill

**GREEN BUSINESS CERTIFIED**  
CITY OF PLANO

12253

**THE BAVARIAN GRILL**  
ALL-AMERICAN  
THE BAVARIAN GRILL  
The Bavarian Grill  
The Bavarian Grill  
The Bavarian Grill  
The Bavarian Grill  
The Bavarian Grill

**ALL-BRANDS MEETS IN THE USA**  
2009  
JUERGEN MAHREZ  
PRESENTED BY  
BANK OF AMERICA

**GERMAN RESTAURANT IN AMERICA**  
2011/2012  
BAVARIAN GRILL

**GERMAN RESTAURANT IN AMERICA**  
2010  
SILVER AWARD  
BAVARIAN GRILL



**GERMAN RESTAURANT IN AMERICA**  
2011/2012  
BAVARIAN GRILL

**GERMAN RESTAURANT IN AMERICA**  
2009  
SILVER AWARD  
BAVARIAN GRILL

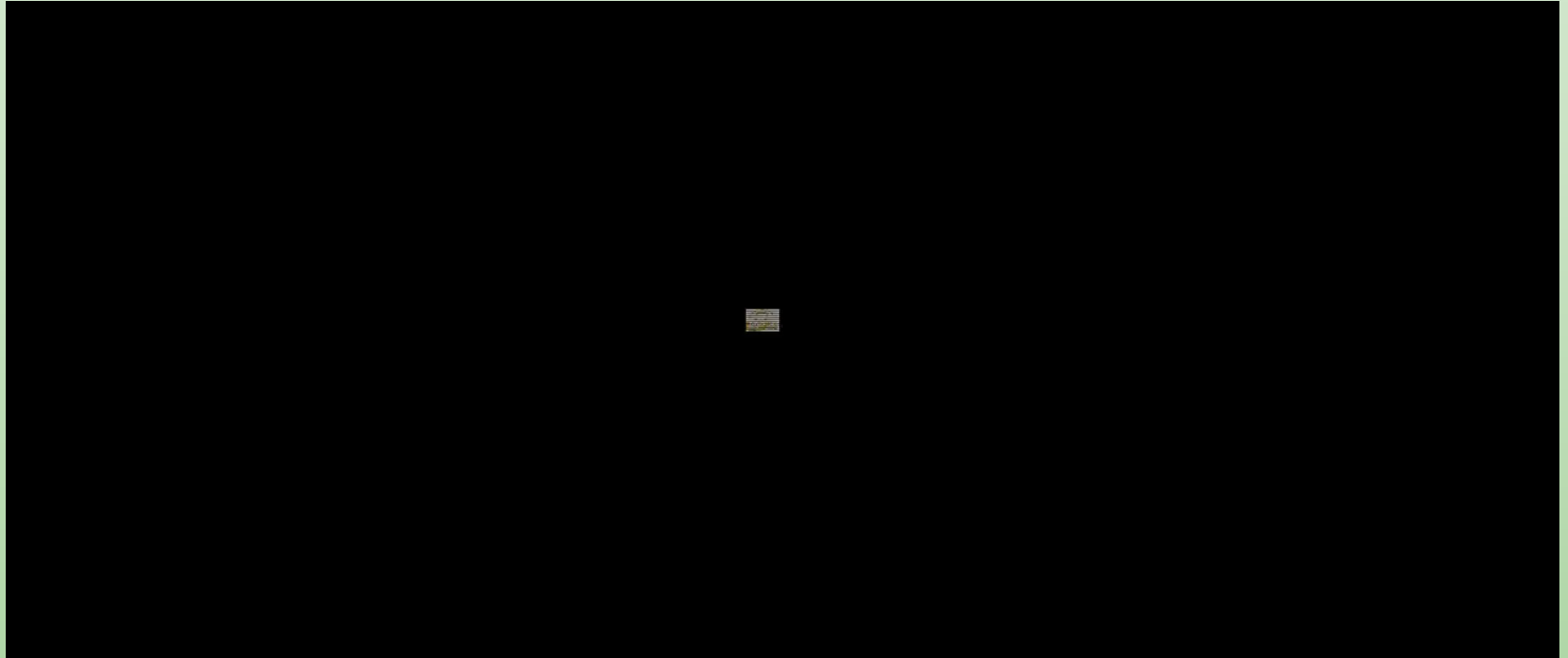
# Bavarian Grill Restaurant



# Hirsch's Specialty Meats Grocer



# Hirsch's Specialty Meats Grocer



# Big Frog Custom T-shirts & More

## Office/Retail



Pollution Prevention  
and Sustainable  
Purchasing

# Whiskey Cake Kitchen and Bar Restaurant



# Legacy Trails Dental Office/Retail





# Harley-Davidson F.S. Office/Retail



Harley-Davidson Financial Services, Inc.

# LYFE Kitchen (Love Your Food Everyday) Restaurant



## Waste Reduction & Sustainable Purchasing

# City of Plano Commercial Recycling



# Marketing

SHOW YOUR  
**Commitment**  
TO THE **environment**  
SUPPORT PLANO'S GREEN BUSINESSES



office/  
retail



food



apartments



# Marketing



# Signs of Green are all over Plano!



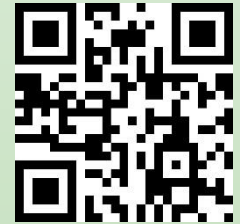
# Program Enhancements

## Technology

- Website
- Videos
- Interactive Map
- Smart phone app

## Promotion

- LGIP
- Social Media
- Incentives
- Advertising
- Networking



# Strengths

- Relationships
- Recycling
- Promotion
- Recognition
- Staff
- Chamber
- Connection to City
- Regulation
- Economy
- Community



# Thank you!



CITY OF PLANO

[christopherd@plano.gov](mailto:christopherd@plano.gov)

[Plano.gov/greenbusiness](http://Plano.gov/greenbusiness)