



Lake Worth Greenprint

Using GIS to Green our Cities

Robert Kent

The Trust for Public Land // North Texas Area Director

THE
TRUST
for
PUBLIC
LAND





The Trust for Public Land—Conserving land for people

What is The Trust for Public Land?



Founded in 1972, The Trust for Public Land is the leading nonprofit working to conserve land for people. We protect the places people care about and create close-to-home parks—particularly in and near cities, where 80 percent of Americans live.

What is The Trust for Public Land?



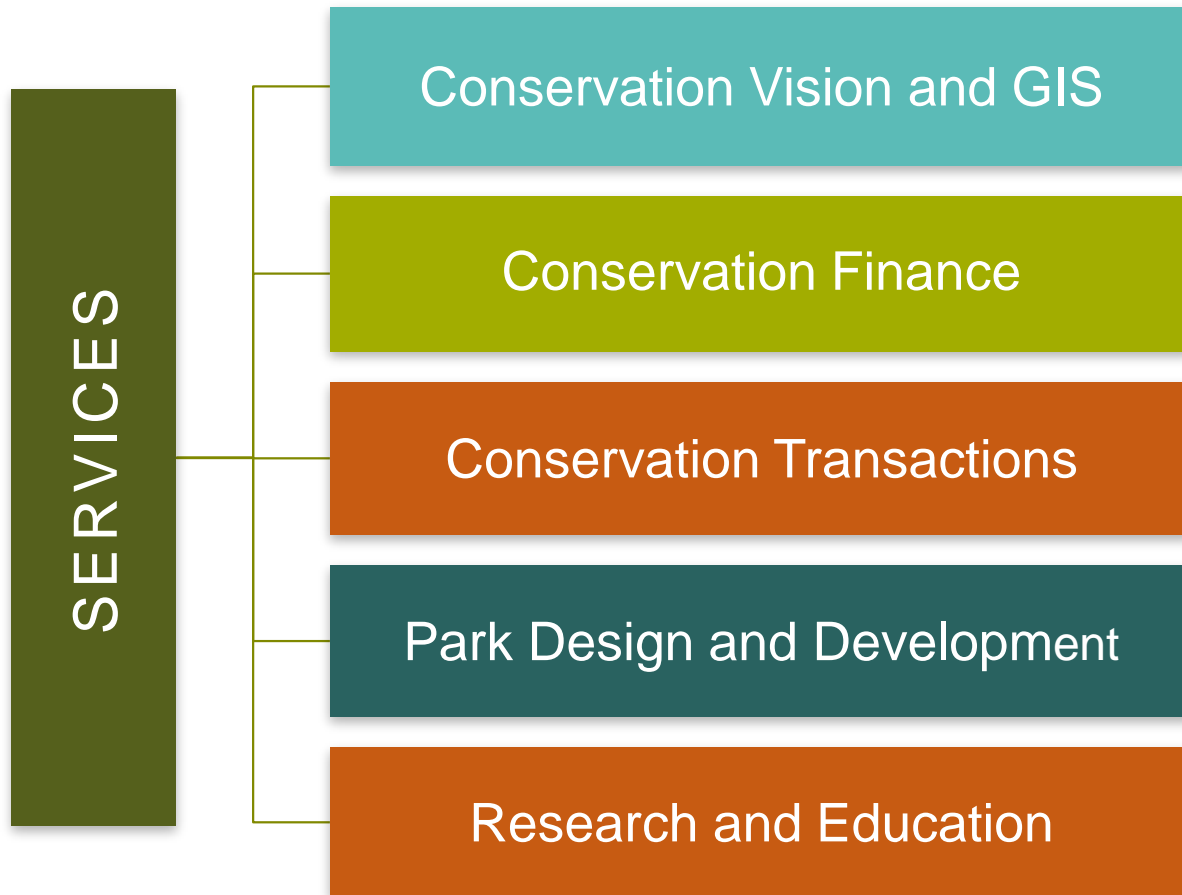
Operating from more than 30 offices nationwide, we've protected more than 3 million acres from the inner city to the wilderness.

What is The Trust for Public Land?



Nearly ten million people live within a ten-minute walk of a Trust for Public Land park, garden, or natural area, and millions more walk on our work every year.

Our Services





Conservation Vision

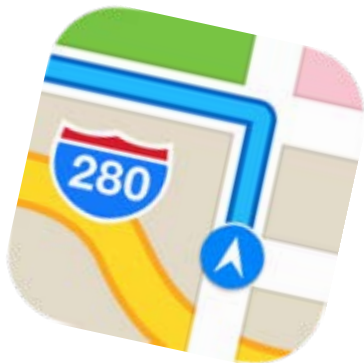
How TPL Uses GIS to Green our Cities

Conservation Vision and GIS



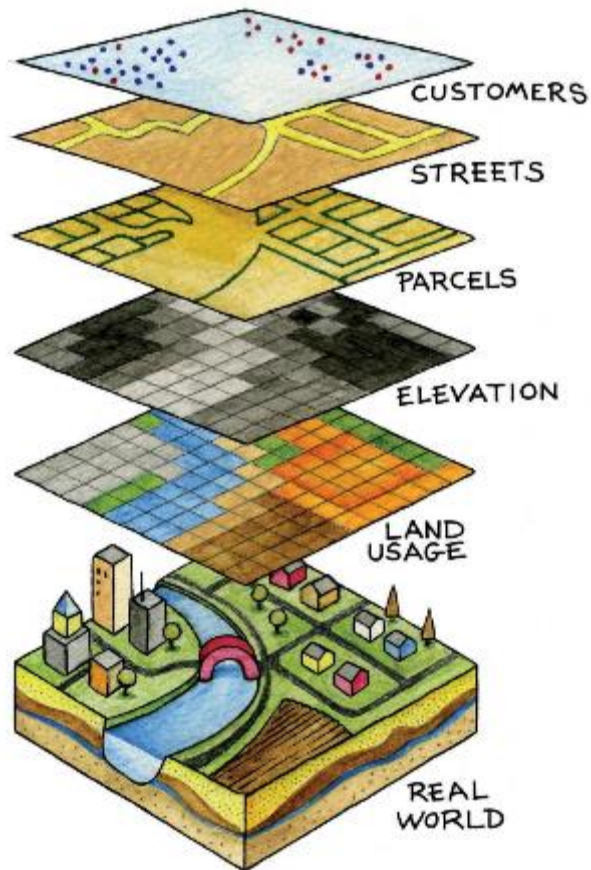
We provide the tools communities need to identify the most important land for conservation—and create and carry out a plan to protect it.

What is Geographic Information System (GIS)?



- All of us use GIS every single day, **whether we know it or not**
- **GIS** is a data platform designed to store, analyze, and present location-specific data
- You all have a **GIS app** on your smartphone

What is Geographic Information System (GIS)?



- But GIS is about **more than navigating** from point A to B
- GIS can tell us things like:
 - *Who **owns** land parcels*
 - *Percentage **canopy cover***
 - ***Poverty rate** in an area*
 - *Prevalence of **asthma***
 - ***...and more***

Lake Worth Greenprint







How does it work?

- Uses a **GIS-based** analysis to help communities prioritize their parks and recreation goals
- Is a **collaborative** process that proactively engages with the local community
- Provides **long-term vision** and a **concrete plan** to protect the places most important to the community



Lake Worth Greenprint

- 60,211-acre study area of the entire **Lake Worth Watershed** (excluding Eagle Mountain Lake)
- Partnered with the **City of Fort Worth**, the **Lake Worth Regional Coordination Committee**, and the **North Central Texas Council of Governments**
- Focused the Greenprint on **water quality protection** and **recreation enhancement**



Lake Worth Greenprint

- Utilized **GIS analysis, public polling, interviews, and stakeholder group**
- Identified lands that have **maximum impact** on water quality and recreational opportunities



Zoom In Zoom Out Pan Full Extent Previous Extent Measure Length Measure Area Identify Reset Map

Select Overlay Data: [Metadata](#)

- Reference Layers
- Places of Interest
- Jurisdictional Boundaries
- Trails
- Hydrology
- Planning
- Demographics
- Landuse/Landcover
- Soils

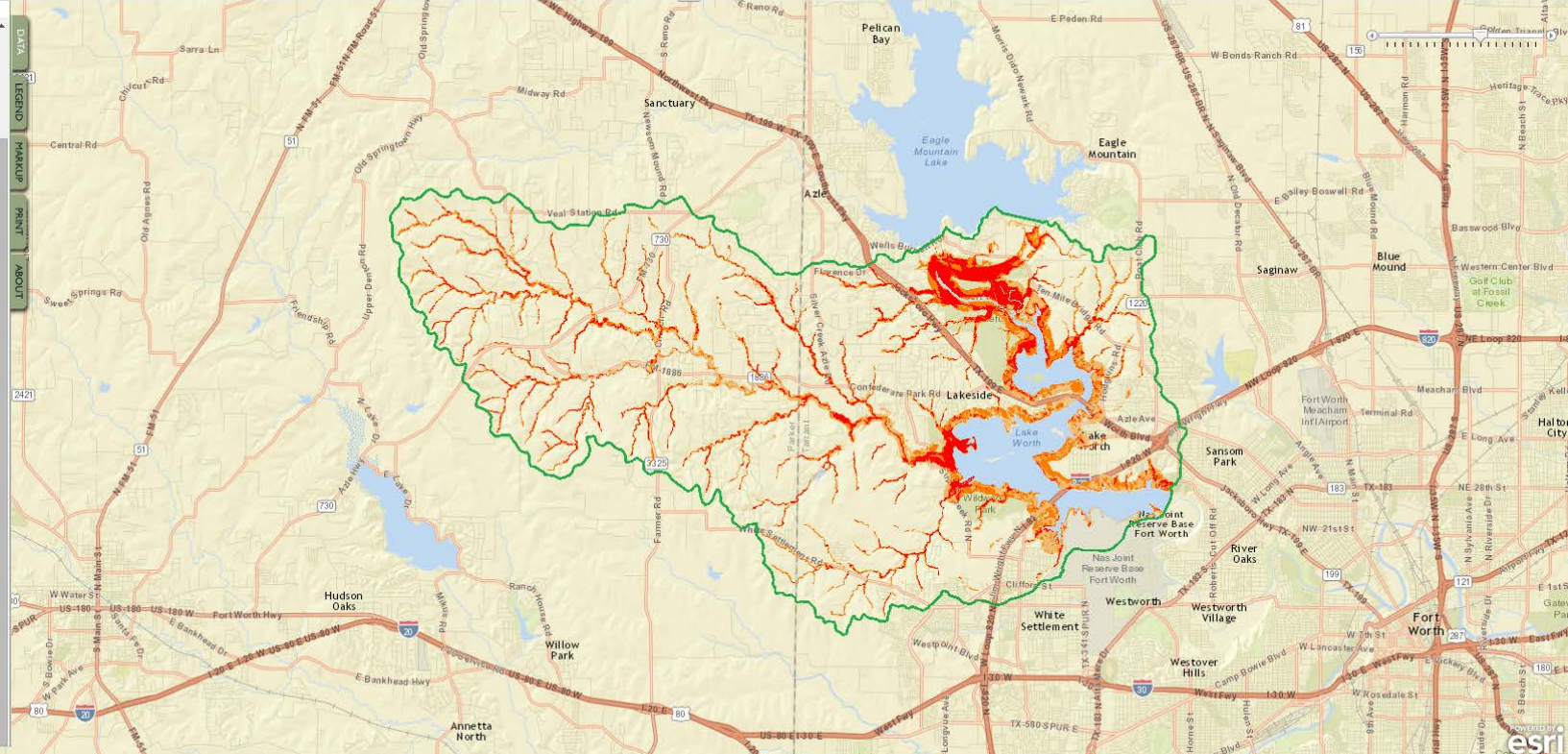
Data Transparency:

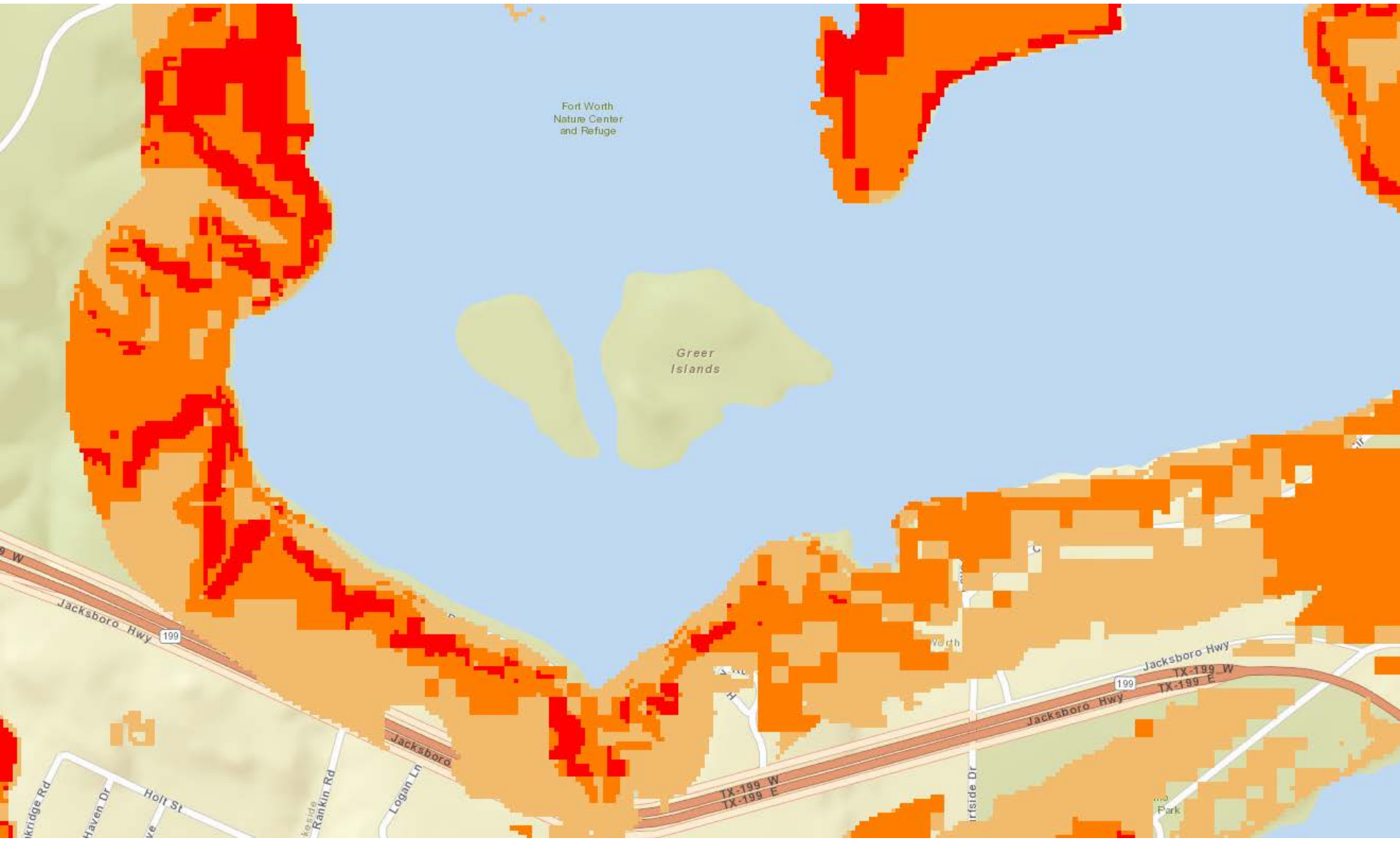
Turn off Greenprint Result

Choose Greenprint Result: [Metadata](#)

- High Priority Water Quality Zones
 - Overall Goal Results
 - Riparian Vegetation
 - Steep Slopes
 - Steep Stream and Lake Banks
 - Floodplains and Buffers
 - Wetlands
 - Soils with Slow Infiltration
 - Erodible Soils
 - Canopy Cover
 - Native Vegetation
- Stewardship Opportunities for Agricultural Land Uses
 - Overall Goal Results
 - Crop Land
 - Ranch Land
- Stewardship Opportunities for Existing and Future Development
 - Provide Recreation Access to Lake Worth
 - Provide Recreational Connectivity to Lake Worth Trail

Greenprint Transparency:





Fort Worth
Nature Center
and Refuge

Greer
Islands

Jacksboro Hwy
199

Jacksboro Hwy
199

TX-199 W
TX-199 E

Holt St
Rankin Rd
Logan Ln

Irfside Dr

Park



Lake Worth Greenprint Action Plan

1. Raise funds to support action plan steps
2. Start a voluntary open space preservation program
3. Gather more information to understand and address water quality problems
4. Develop or enhance local government program/activities
5. Promote education and publicity
6. Create landowner incentives
7. Undertake additional planning and evaluation
8. Regulate for improved water quality outcomes



The Trust for Public Land—Land for people



Thank you!

Robert Kent

robert.kent@tpl.org

THE
TRUST
for
PUBLIC
LAND

