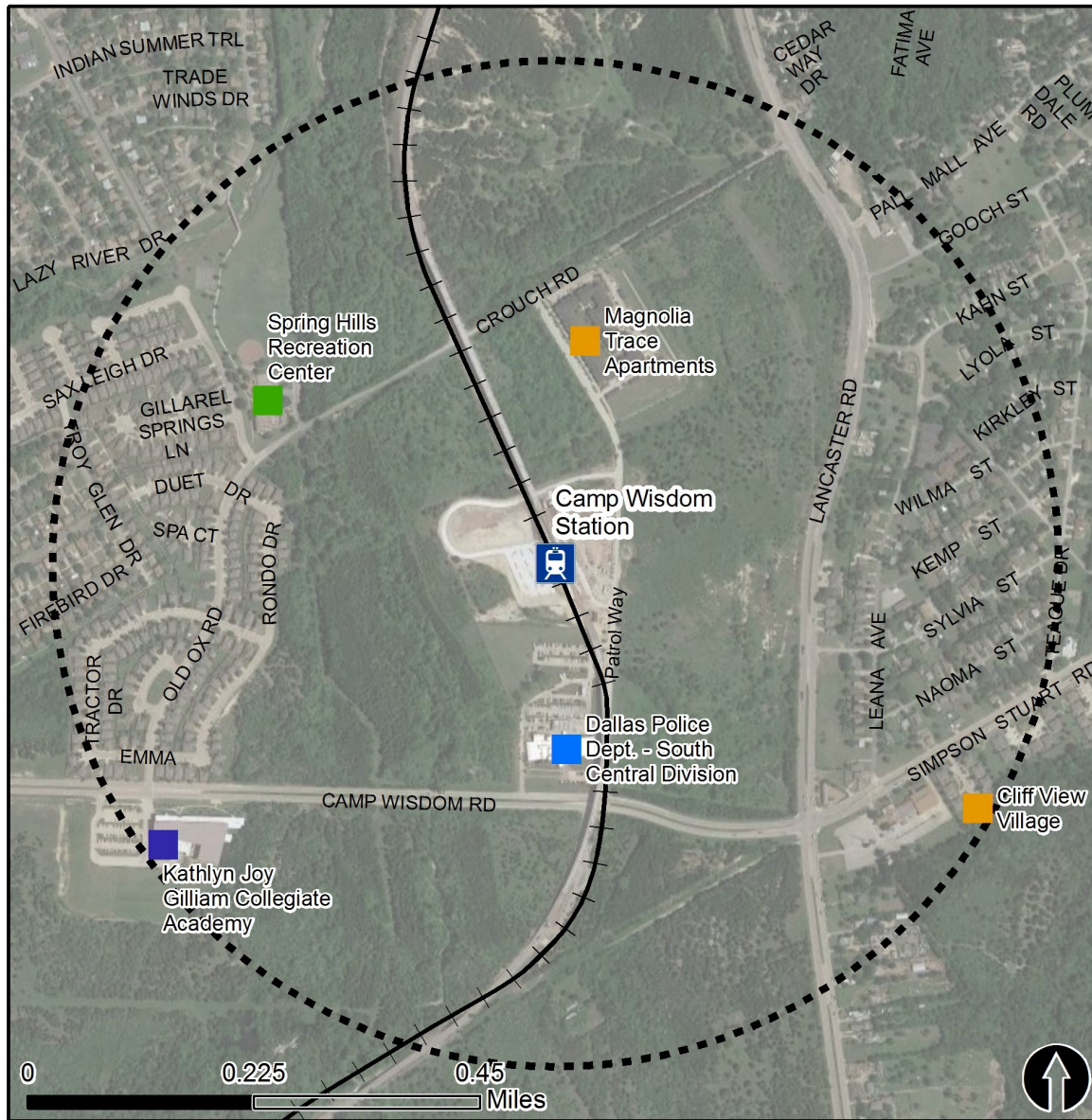


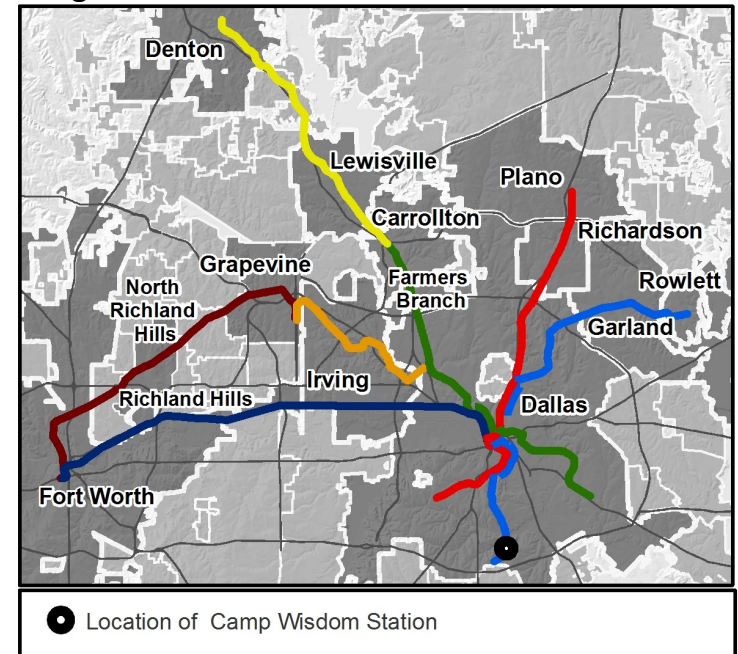
# Rail Station Fact Sheet – Camp Wisdom Station



## Station Overview

Camp Wisdom Station is located in Dallas on the west side of Patrol Way north of Camp Wisdom Road. The station is next to the Dallas Police Department's South Central station. The station opened in 2016 and is served by the DART Rail Blue Line.

## Regional Rail Transit Lines



0.5 Mile Station Buffer Rail Lines	Rail Stations	<b>Key Developments</b>			
		Education	Government	Multi-Family	Recreation

# Rail Station Fact Sheet – Camp Wisdom Station



## Station Characteristics<sup>1</sup>

Address	6869 Patrol Way
City	Dallas
Agency	Dallas Area Rapid Transit
Rail Line(s)	Blue Line
Corridor	South Oak Cliff (SOC)
Year Opened	2016
Park & Ride Spaces	117

## Ridership<sup>1</sup>

2015 Avg. Weekday	N/A
2015 Avg. Saturday	N/A
2015 Avg. Sunday	N/A

## 2014 On-Board Transit Survey: Access Mode to Station<sup>2</sup>

Bike	N/A
Drive Alone	N/A
Carpool	N/A
Walk	N/A
Drop Off	N/A
Other	N/A
Transit Transfer	N/A

## Station Area Plans and Studies

Title	
Publisher	
Year	
Web Location	

## Station Area Characteristics (1/2 mile radius)

### Demographics<sup>3</sup>

Total Population	6,182
Population Density (pop/sq. mile)	1,187
Average Median Age	38
Average Median Income	\$33,197.25

### Housing<sup>3</sup>

Total Housing Units	2,629
Housing Density (units/sq. mile)	505
Percent Occupied	88%
Percent Owner-Occupied	61%
Percent Renter-Occupied	39%

### Commute To Work<sup>3</sup>

Percent Automobile	93.5%
Percent Drive Alone	85.3%
Percent Carpool	8.1%
Percent Transit	3.7%
Percent Bike	0.0%
Percent Walk	0.0%
Percent Other	0.0%
Percent Work from Home	2.9%
Percent Zero-Vehicle Households	12.4%

### Traffic Survey Zone 2017 Employment Forecast<sup>2</sup>

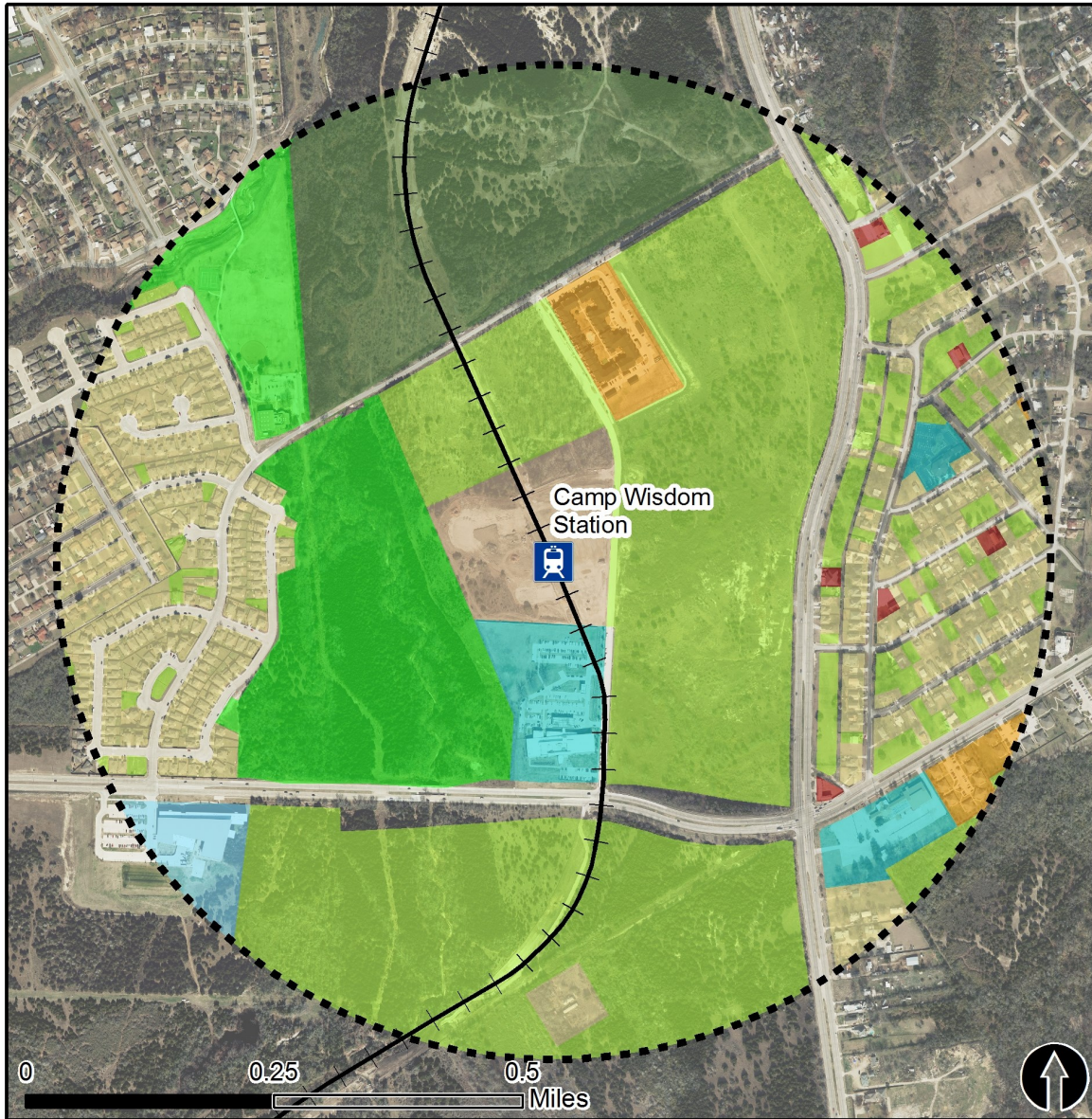
Total Jobs	717
Job Density (jobs/sq. mile)	181



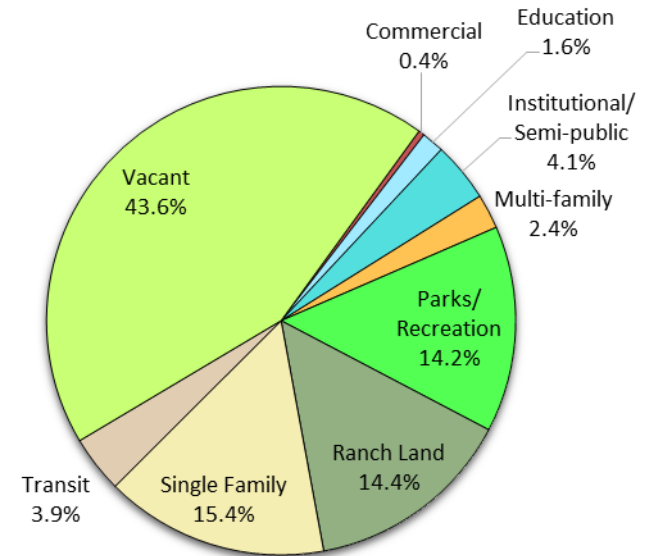
# Land Use (2016) – Camp Wisdom Station



North Central Texas  
Council of Governments



### Land Use Percentages



0.5 Mile  
Station Buffer



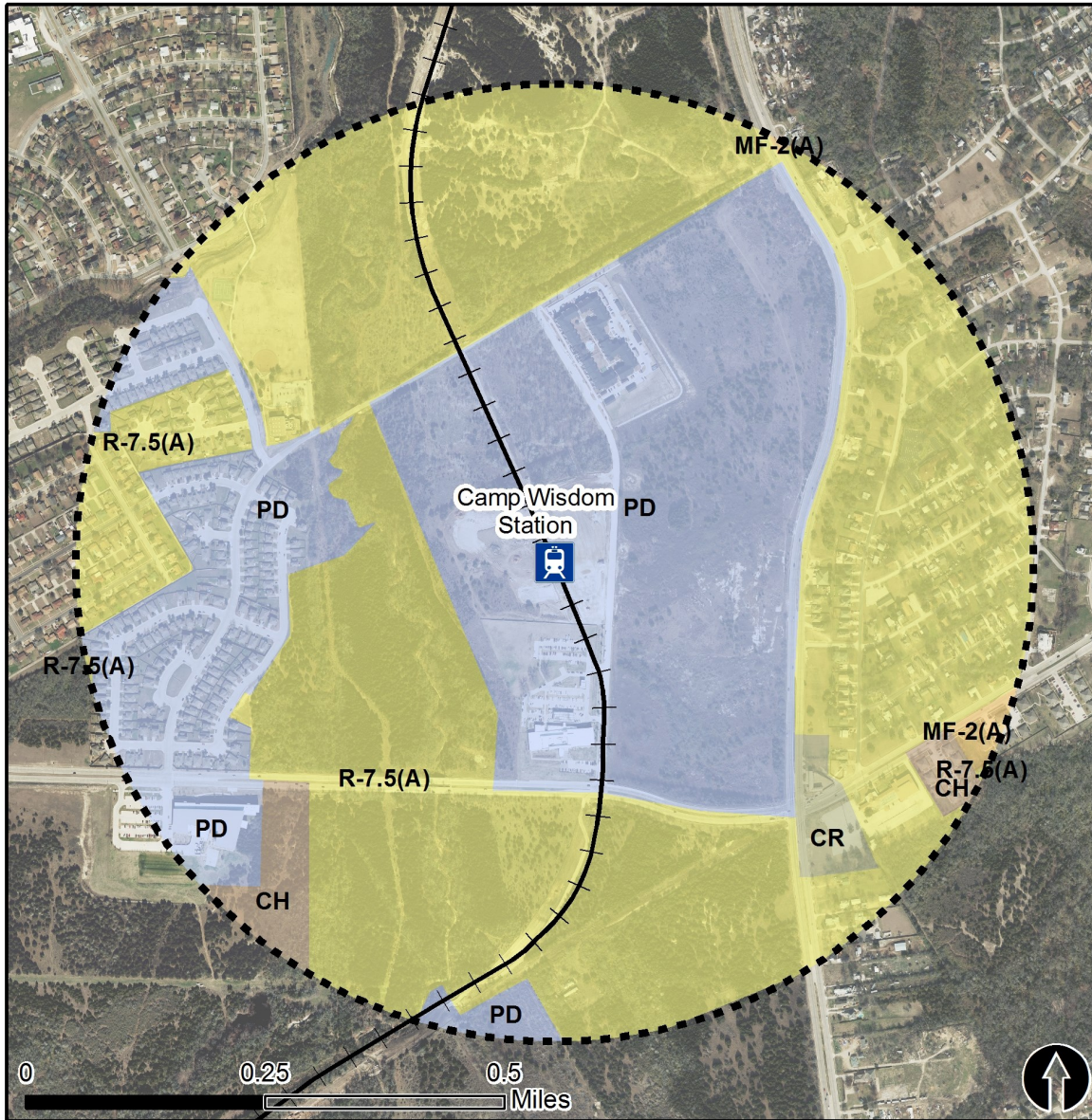
Rail Stations



Rail Lines



# Zoning (2016) – Camp Wisdom Station



## Zoning Districts

CH – Clustered Housing

CR – Community Retail


MF-2(A) – Multi-family



PD – Planned Development

R-7.5(A) – Single Family

For more information on zoning, please visit the City of Dallas Zoning website at:

<http://gis.dallascityhall.com/zoningweb/>

 0.5 Mile  
Station Buffer

 Rail Stations  Rail Alignment

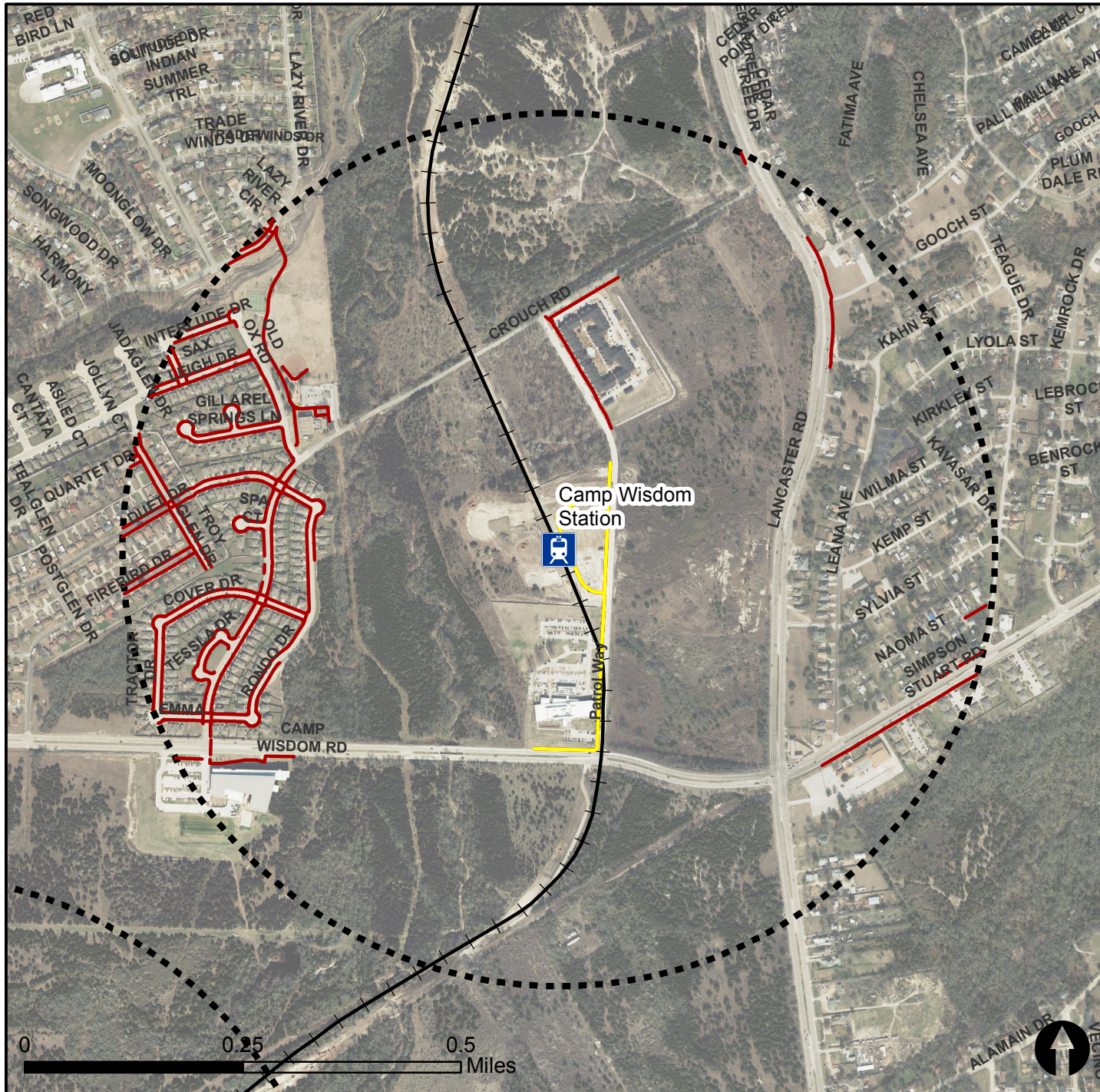


# Pedestrian Routes to Rail - Camp Wisdom Station

Last Updated: October 2016



North Central Texas  
Council of Governments

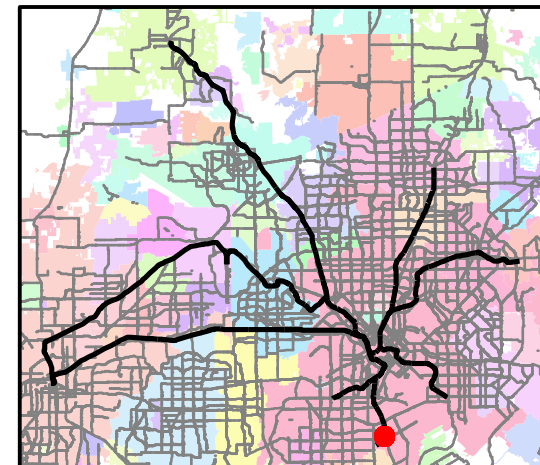


### Legend

- Rail Stations
- 0.5 Mile Station Buffer
- Railroads
- Existing sidewalk facilities within a 0.5 mile walk distance
- Existing sidewalk facilities greater than a 0.5 mile walk distance
- Existing sidewalk facilities that disconnected due to a gap in the network

### Project Overview

The Pedestrian Routes to Rail study identifies all existing pedestrian facilities within a half-mile radius of existing light rail and commuter rail stations in the Dallas-Fort Worth region based on 2014 data. ArcGIS Network Analyst tool was used to identify continuous facilities that are less than or greater than a half-mile actual walking distance to a station. The maps also reflect existing facilities that are disconnected due to gaps or other barriers not allowing a continuous pedestrian route to a station. The maps do not reflect the condition or ADA compliance of the existing infrastructure. More information on the Routes to Rail study and methodology is available at: [nctcog.org/RoutesToRail](http://nctcog.org/RoutesToRail)





# Bicycle Routes to Rail - Camp Wisdom Station

Last Updated: October 2016



North Central Texas  
Council of Governments



## Legend

- Rail Stations
- 0.5 Mile Station Buffer
- Rail Lines
- On-Street Bikeway, Existing
- On-Street Bikeway, Planned
- 2040 Veloweb
- Off-Street Path, Existing
- Off-Street Path, Planned

## Project Overview

The Bicycle Routes to Rail study identifies all existing and planned bikeways in proximity to existing or under-construction light rail and commuter rail stations in the Dallas / Fort Worth region based on 2016 data. The maps reflect off-street paths (trails) and streets designated by local adopted master plans for dedicated bikeways (e.g. bike lanes, cycle tracks) located on the street. In accordance with the Texas Transportation Code, bicyclists have a right to the road. As such, the map does not reflect other roadways around the station that may have signed bike routes or by state law may be used by bicyclists. More information about the Routes to Rail study and methodology is available at:

[nctcog.org/RoutesToRail](http://nctcog.org/RoutesToRail)

