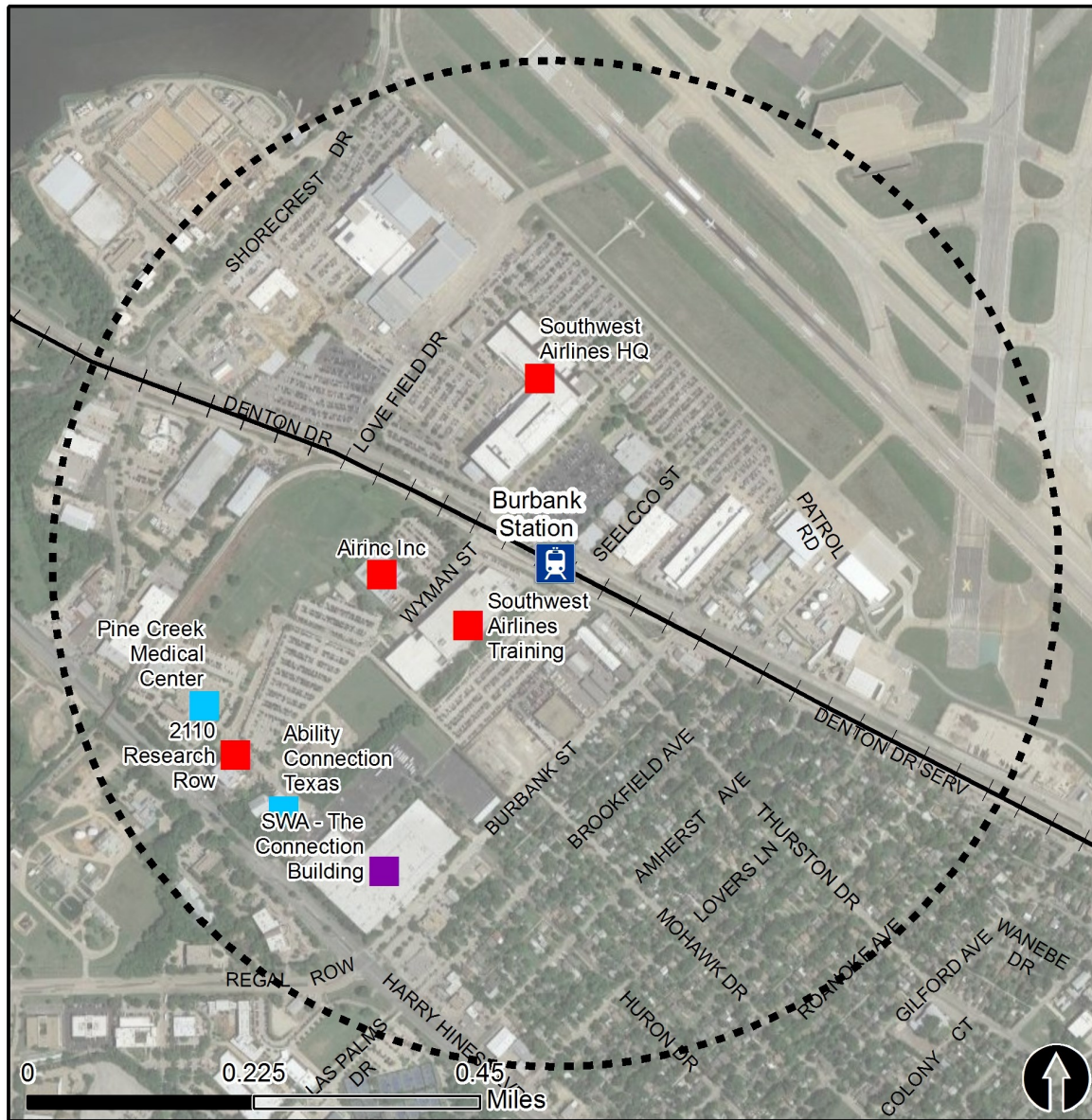


# Rail Station Fact Sheet – Burbank Station



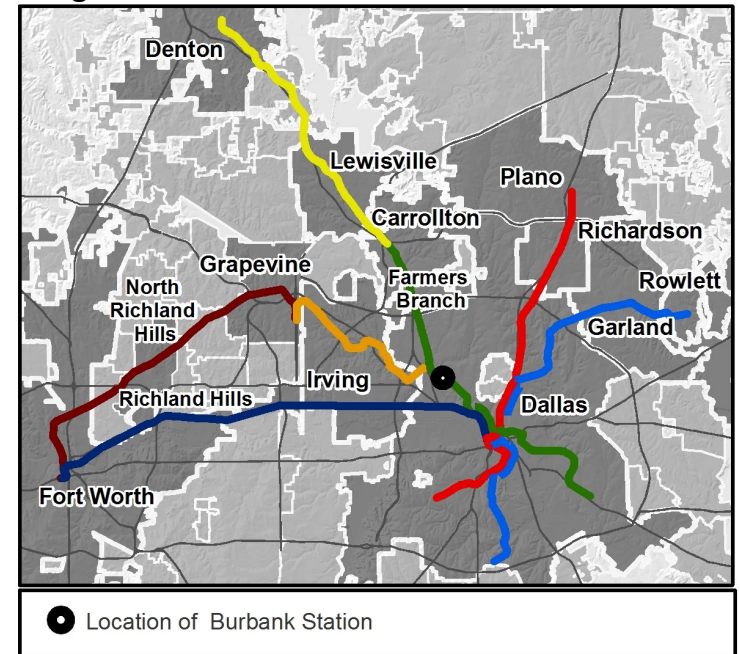
North Central Texas  
Council of Governments



## Station Overview

Burbank Station is located just north of Burbank Street and west of Denton Drive, near Dallas Love Field Airport and next to Southwest Airlines corporate offices. The station opened in 2010 and is served by the DART Rail Green and Orange Lines.

## Regional Rail Transit Lines



0.5 Mile  
Station Buffer



Rail Stations



Rail Lines

### Key Developments



Industrial



Institutional



Office

# Rail Station Fact Sheet – Burbank Station



## Station Characteristics<sup>1</sup>

Address	8851 Denton Drive
City	Dallas
Agency	Dallas Area Rapid Transit
Rail Line(s)	Green Line, Orange Line
Corridor	Northwest (NW)
Year Opened	2010
Park & Ride Spaces	0

## Ridership<sup>1</sup>

2015 Avg. Weekday	632
2015 Avg. Saturday	173
2015 Avg. Sunday	133

## 2014 On-Board Transit Survey: Access Mode to Station<sup>2</sup>

Bike	0.0%
Drive Alone	3.1%
Carpool	0.0%
Walk	69.4%
Drop Off	21.3%
Other	0.0%
Transit Transfer	6.2%

## Station Area Plans and Studies

Title	
Publisher	
Year	
Web Location	

## Station Area Characteristics (1/2 mile radius)

### Demographics<sup>3</sup>

Total Population	4,564
Population Density (pop/sq. mile)	407
Average Median Age	40
Average Median Income	\$19,655.33

### Housing<sup>3</sup>

Total Housing Units	1,646
Housing Density (units/sq. mile)	147
Percent Occupied	91%
Percent Owner-Occupied	53%
Percent Renter-Occupied	47%

### Commute To Work<sup>3</sup>

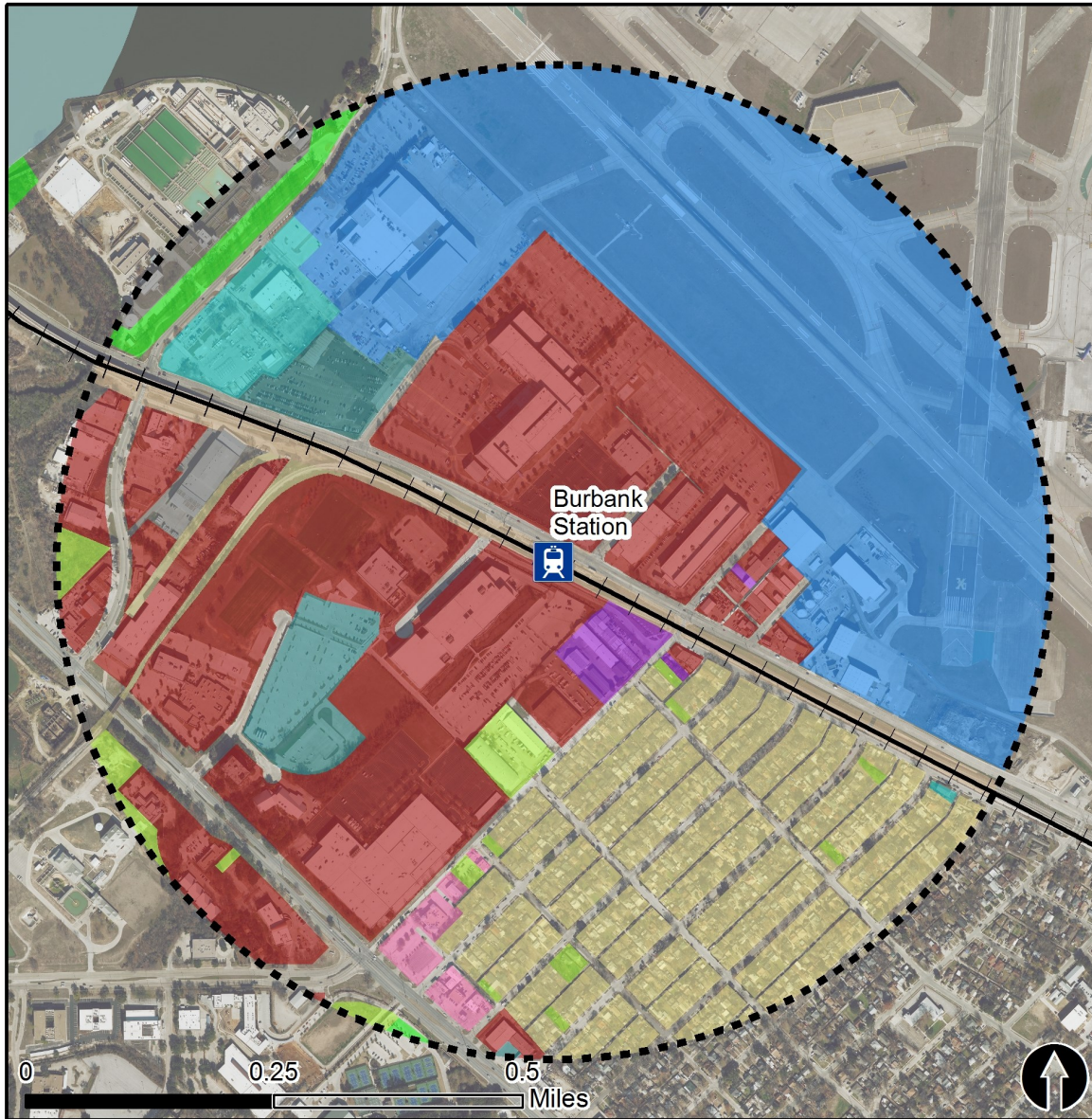
Percent Automobile	81.9%
Percent Drive Alone	72.0%
Percent Carpool	9.9%
Percent Transit	15.4%
Percent Bike	0.0%
Percent Walk	2.5%
Percent Other	0.0%
Percent Work from Home	0.2%
Percent Zero-Vehicle Households	19.3%

### Traffic Survey Zone 2017 Employment Forecast<sup>2</sup>

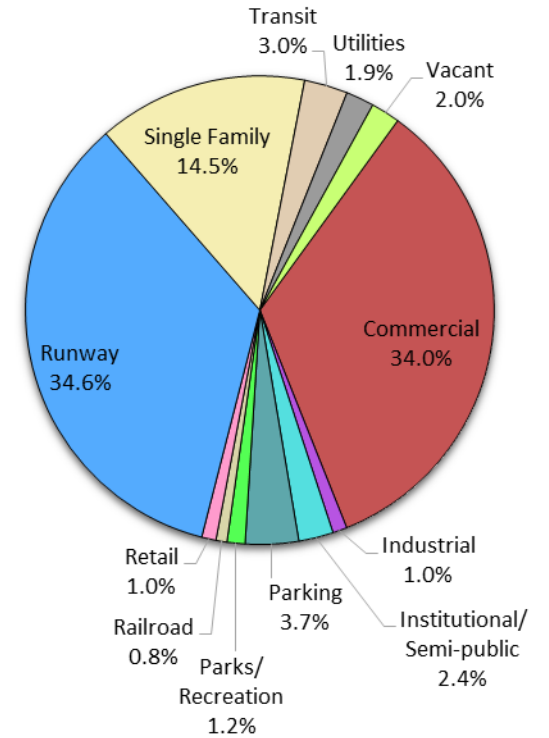
Total Jobs	29,195
Job Density (jobs/sq. mile)	9,615





# Land Use (2016) – Burbank Station



## Land Use Percentages

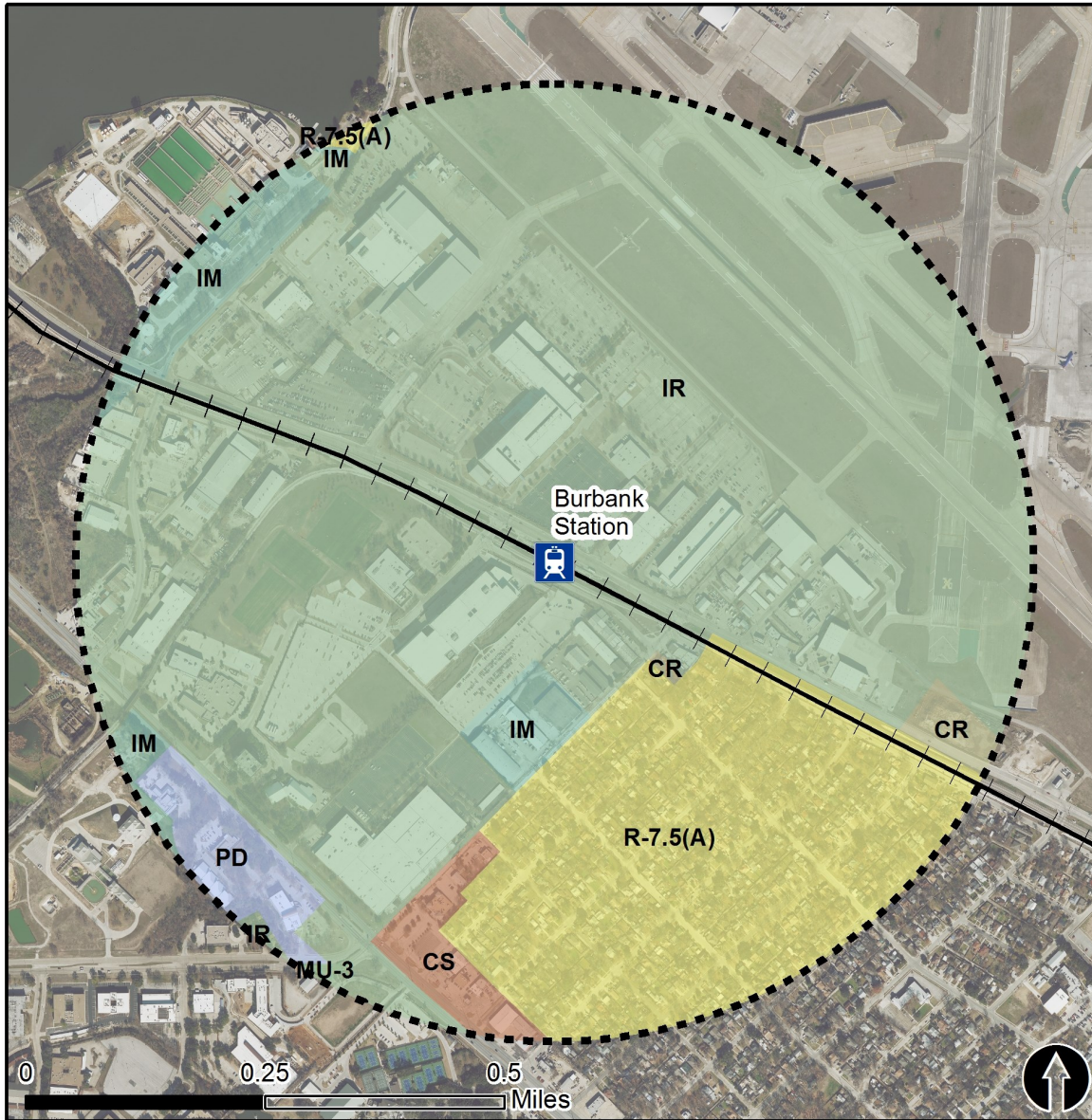


 0.5 Mile  
Station Buffer

 Rail Stations  Rail Lines



# Zoning (2016) – Burbank Station



## Zoning Districts

- IM – Industrial Manufacturing
- IR – Industrial Research
- CR – Community Retail
- CS – Commercial Service
- PD – Planned Development
- R-7.5(A) – Single Family

For more information on zoning, please visit the City of Dallas Zoning website at:

<http://gis.dallascityhall.com/zoningweb/>



0.5 Mile  
Station Buffer



Rail Stations



Rail Alignment

# Pedestrian Routes to Rail - Burbank Station

Last Updated: February 2015



North Central Texas  
Council of Governments



## Legend



Rail Stations



0.5 Mile  
Station Buffer

Railroads

Existing sidewalk facilities within a 0.5 mile walk distance

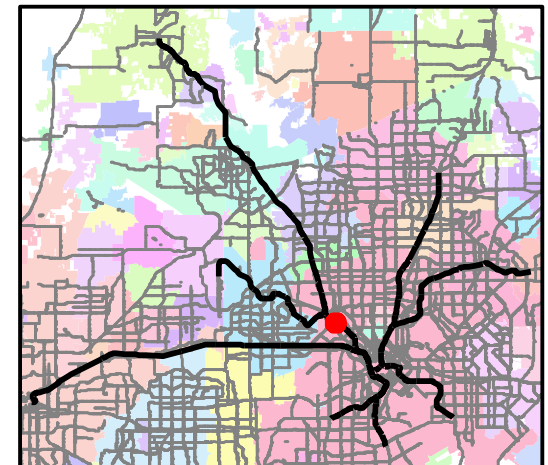
Existing sidewalk facilities greater than a 0.5 mile walk distance

Existing sidewalk facilities that are disconnected due to a gap in the network

## Project Overview

The Pedestrian Routes to Rail study identifies all existing pedestrian facilities within a half-mile radius of existing light rail and commuter rail stations in the Dallas-Fort Worth region based on 2014 data. ArcGIS Network Analyst tool was used to identify continuous facilities that are less than or greater than a half-mile actual walking distance to a station. The maps also reflect existing facilities that are disconnected due to gaps or other barriers not allowing a continuous pedestrian route to a station. The maps do not reflect the condition or ADA compliance of the existing infrastructure. More information on the Routes to Rail study and methodology is available at:

[nctcog.org/RoutesToRail](http://nctcog.org/RoutesToRail)



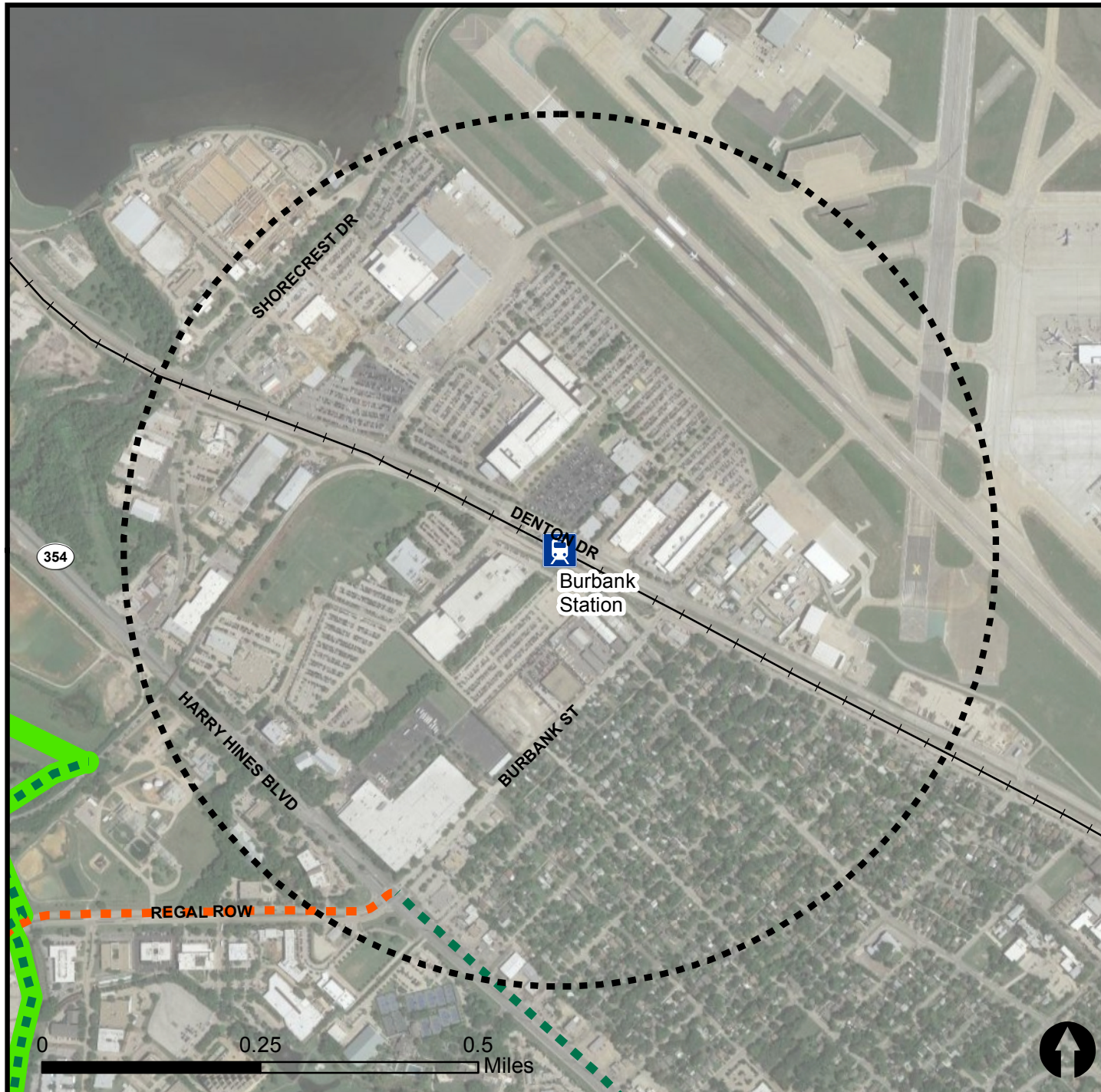


# Bicycle Routes to Rail - Burbank Station

Last Updated: October 2016



North Central Texas  
Council of Governments



## Legend



Rail Stations



0.5 Mile  
Station Buffer

—+— Rail Lines

— On-Street Bikeway, Existing

— On-Street Bikeway, Planned

2040 Veloweb

— Off-Street Path, Existing

— Off-Street Path, Planned

## Project Overview

The Bicycle Routes to Rail study identifies all existing and planned bikeways in proximity to existing or under-construction light rail and commuter rail stations in the Dallas / Fort Worth region based on 2016 data. The maps reflect off-street paths (trails) and streets designated by local adopted master plans for dedicated bikeways (e.g. bike lanes, cycle tracks) located on the street. In accordance with the Texas Transportation Code, bicyclists have a right to the road. As such, the map does not reflect other roadways around the station that may have signed bike routes or by state law may be used by bicyclists. More information about the Routes to Rail study and methodology is available at:

[nctcog.org/RoutesToRail](http://nctcog.org/RoutesToRail)

