

Rail Station Fact Sheet – Dallas Zoo Station



Station Characteristics¹

Address	614 S. Ewing Avenue
City	Dallas
Agency	Dallas Area Rapid Transit
Rail Line(s)	Red Line
Corridor	West Oak Cliff (WOC)
Year Opened	1996
Park & Ride Spaces	0

Ridership¹

2015 Avg. Weekday	622
2015 Avg. Saturday	491
2015 Avg. Sunday	341

2014 On-Board Transit Survey: Access Mode to Station²

Bike	0.0%
Drive Alone	2.1%
Carpool	4.2%
Walk	60.1%
Drop Off	13.7%
Other	0.6%
Transit Transfer	19.4%

Station Area Plans and Studies

Title	
Publisher	
Year	
Web Location	

Station Area Characteristics (1/2 mile radius)

Demographics³

Total Population	8,139
Population Density (pop/sq. mile)	4,209
Average Median Age	31
Average Median Income	\$29,244.38

Housing³

Total Housing Units	2,831
Housing Density (units/sq. mile)	1,464
Percent Occupied	90%
Percent Owner-Occupied	52%
Percent Renter-Occupied	48%

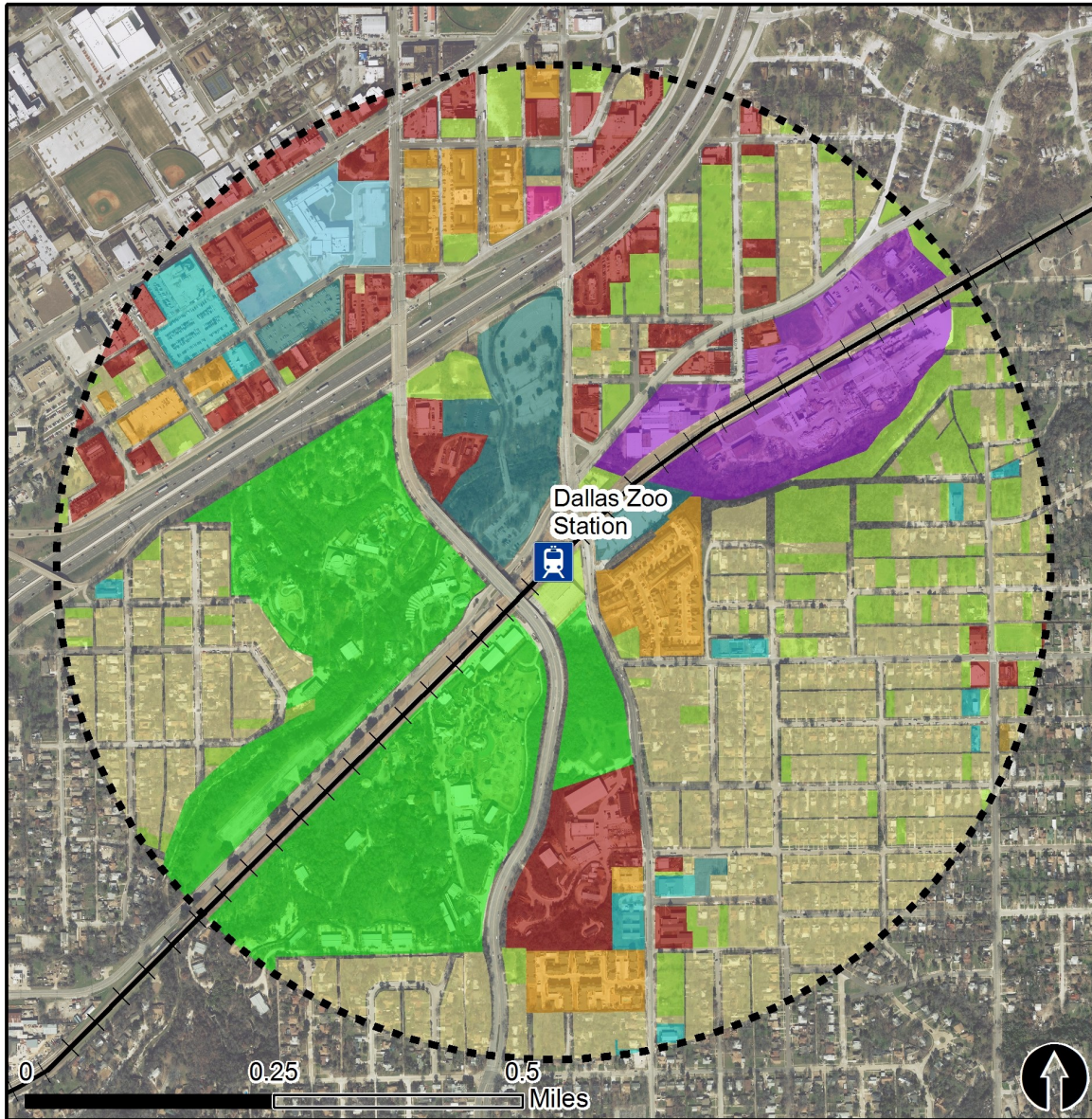
Commute To Work³

Percent Automobile	86.5%
Percent Drive Alone	67.6%
Percent Carpool	18.8%
Percent Transit	5.3%
Percent Bike	0.2%
Percent Walk	1.6%
Percent Other	3.8%
Percent Work from Home	2.6%
Percent Zero-Vehicle Households	11.7%

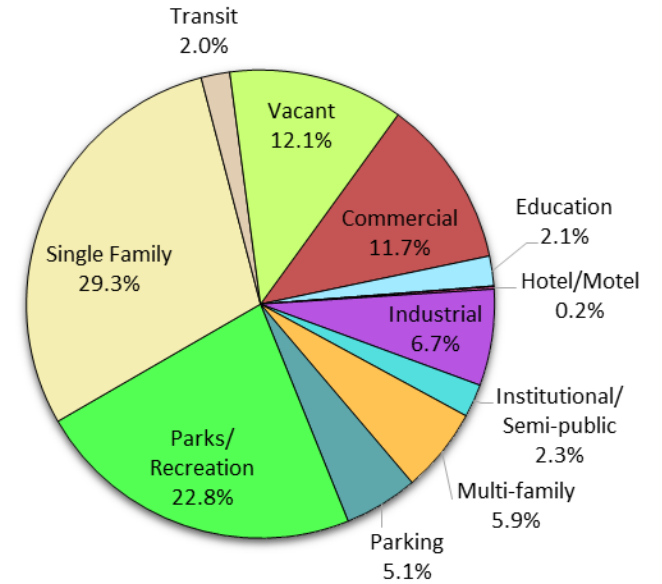
Traffic Survey Zone 2017 Employment Forecast²

Total Jobs	2,725
Job Density (jobs/sq. mile)	1,415

Land Use (2016) – Dallas Zoo Station



Land Use Percentages



0.5 Mile Station Buffer

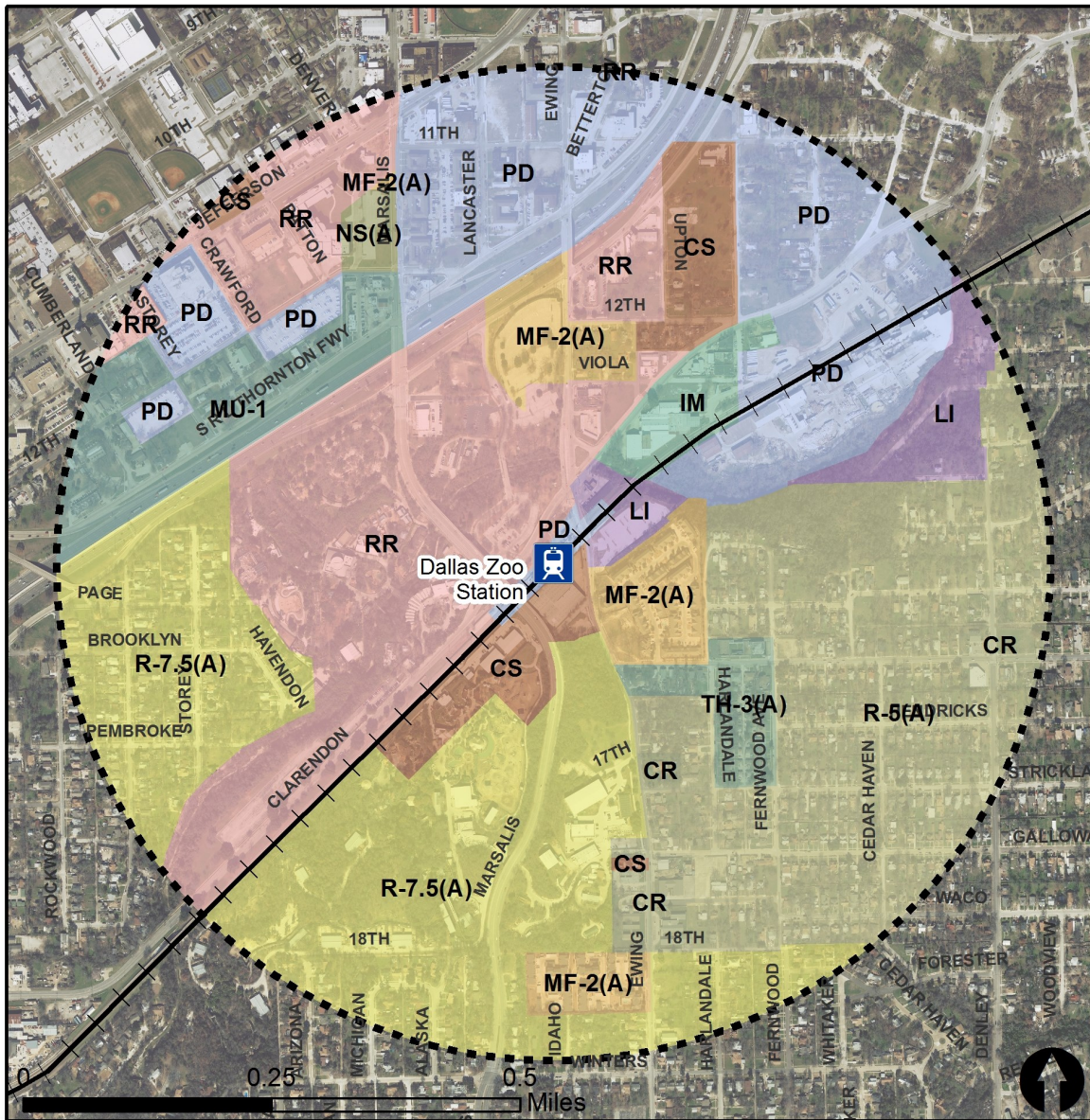


Rail Stations



Rail Lines

Zoning (2016) – Dallas Zoo Station





Zoning Districts

- CR – Community Retail
- CS – Commercial Service
- IM – Industrial Manufacturing
- LI – Light Industrial
- MF-2(A) – Multi-family
- MU-1 – Mixed-Use
- NS(A) – Neighborhood Service
- PD – Planned Development
- R-7.5, R-5(A) – Single Family
- RR – Regional Retail

For more information on zoning, please visit the City of Dallas Zoning website at:

<http://gis.dallascityhall.com/zoningweb/>

 0.5 Mile
Station Buffer

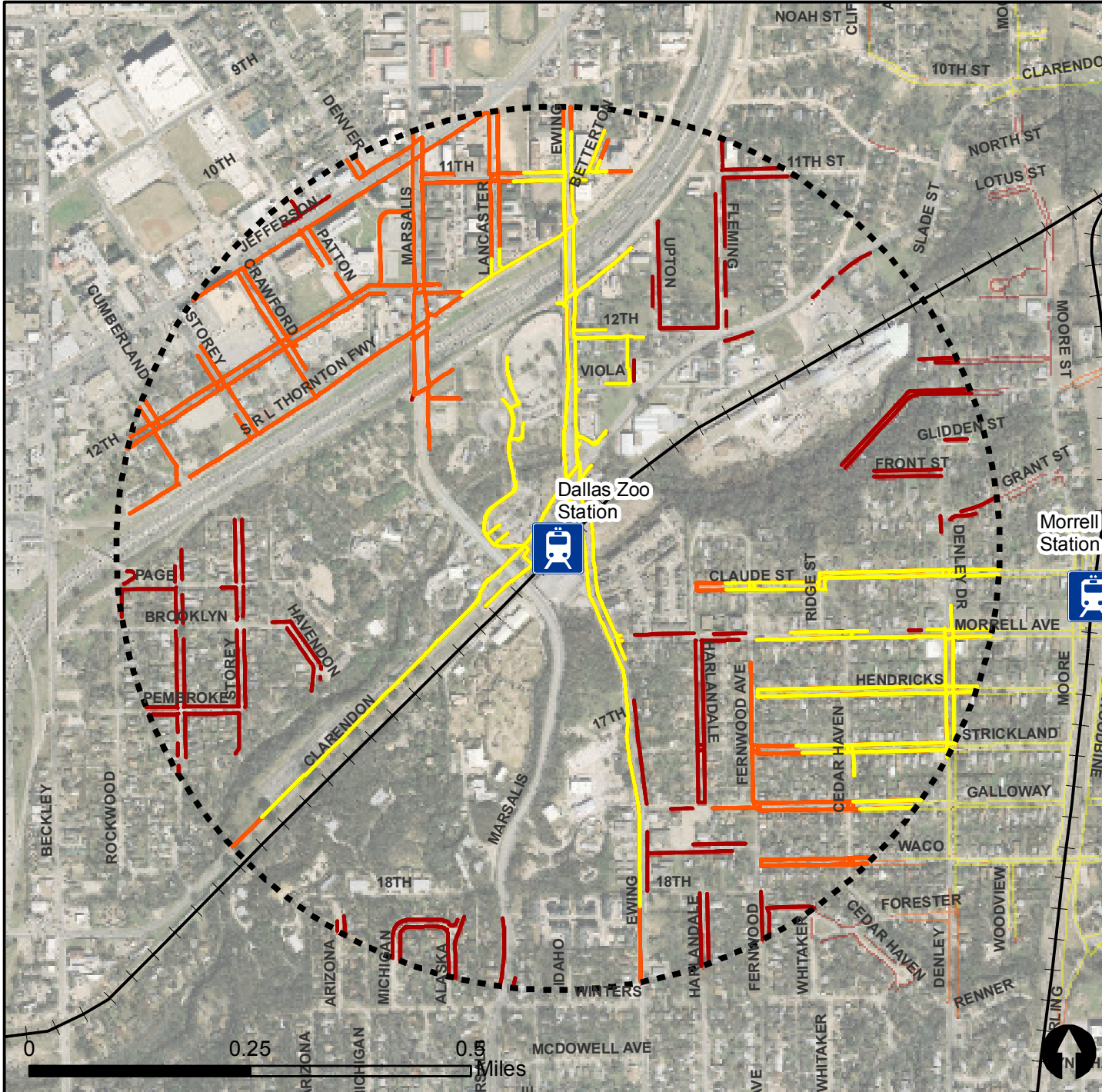
 Rail Stations  Railroads

Pedestrian Routes to Rail - Dallas Zoo Station







Last Updated: February 2015



North Central Texas
Council of Governments



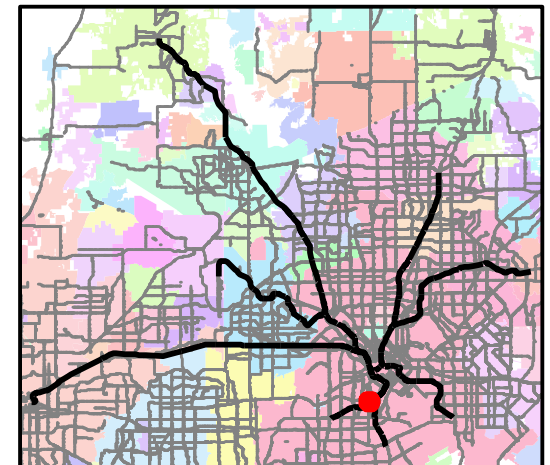
Legend

-  Rail Stations
-  0.5 Mile Station Buffer
-  Railroads
-  Existing sidewalk facilities within a 0.5 mile walk distance
-  Existing sidewalk facilities greater than a 0.5 mile walk distance
-  Existing sidewalk facilities that are disconnected due to a gap in the network

Project Overview

The Pedestrian Routes to Rail study identifies all existing pedestrian facilities within a half-mile radius of existing light rail and commuter rail stations in the Dallas-Fort Worth region based on 2014 data. ArcGIS Network Analyst tool was used to identify continuous facilities that are less than or greater than a half-mile actual walking distance to a station. The maps also reflect existing facilities that are disconnected due to gaps or other barriers not allowing a continuous pedestrian route to a station. The maps do not reflect the condition or ADA compliance of the existing infrastructure. More information on the Routes to Rail study and methodology is available at:

nctcog.org/RoutesToRail

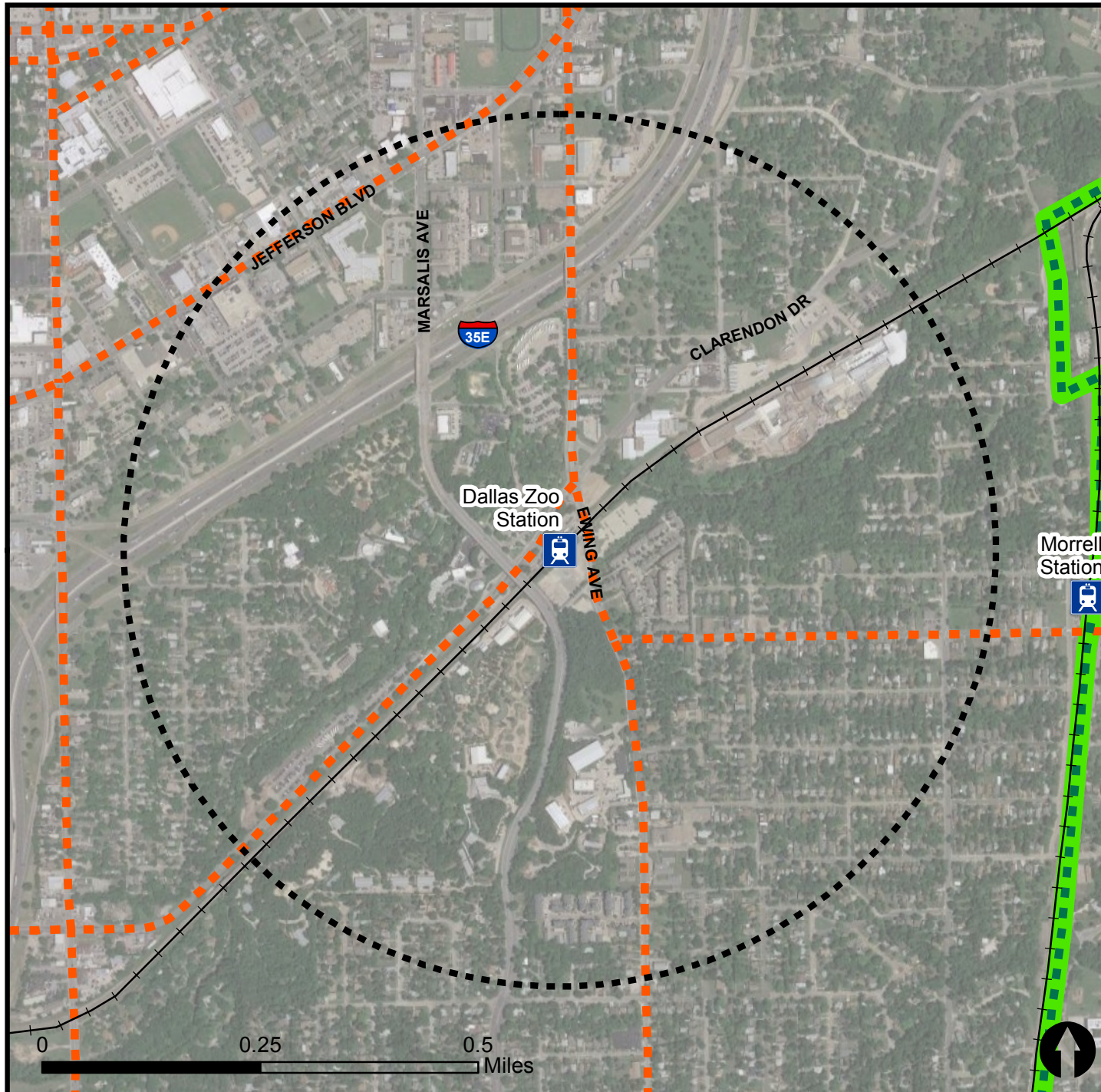


Bicycle Routes to Rail - Dallas Zoo Station

Last Updated: October 2016



North Central Texas
Council of Governments



Legend

- Rail Stations
- 0.5 Mile Station Buffer
- Rail Lines
- On-Street Bikeway, Existing
- On-Street Bikeway, Planned
- 2040 Veloweb
- Off-Street Path, Existing
- Off-Street Path, Planned

Project Overview

The Bicycle Routes to Rail study identifies all existing and planned bikeways in proximity to existing or under-construction light rail and commuter rail stations in the Dallas / Fort Worth region based on 2016 data. The maps reflect off-street paths (trails) and streets designated by local adopted master plans for dedicated bikeways (e.g. bike lanes, cycle tracks) located on the street. In accordance with the Texas Transportation Code, bicyclists have a right to the road. As such, the map does not reflect other roadways around the station that may have signed bike routes or by state law may be used by bicyclists. More information about the Routes to Rail study and methodology is available at: nctcog.org/RoutesToRail

