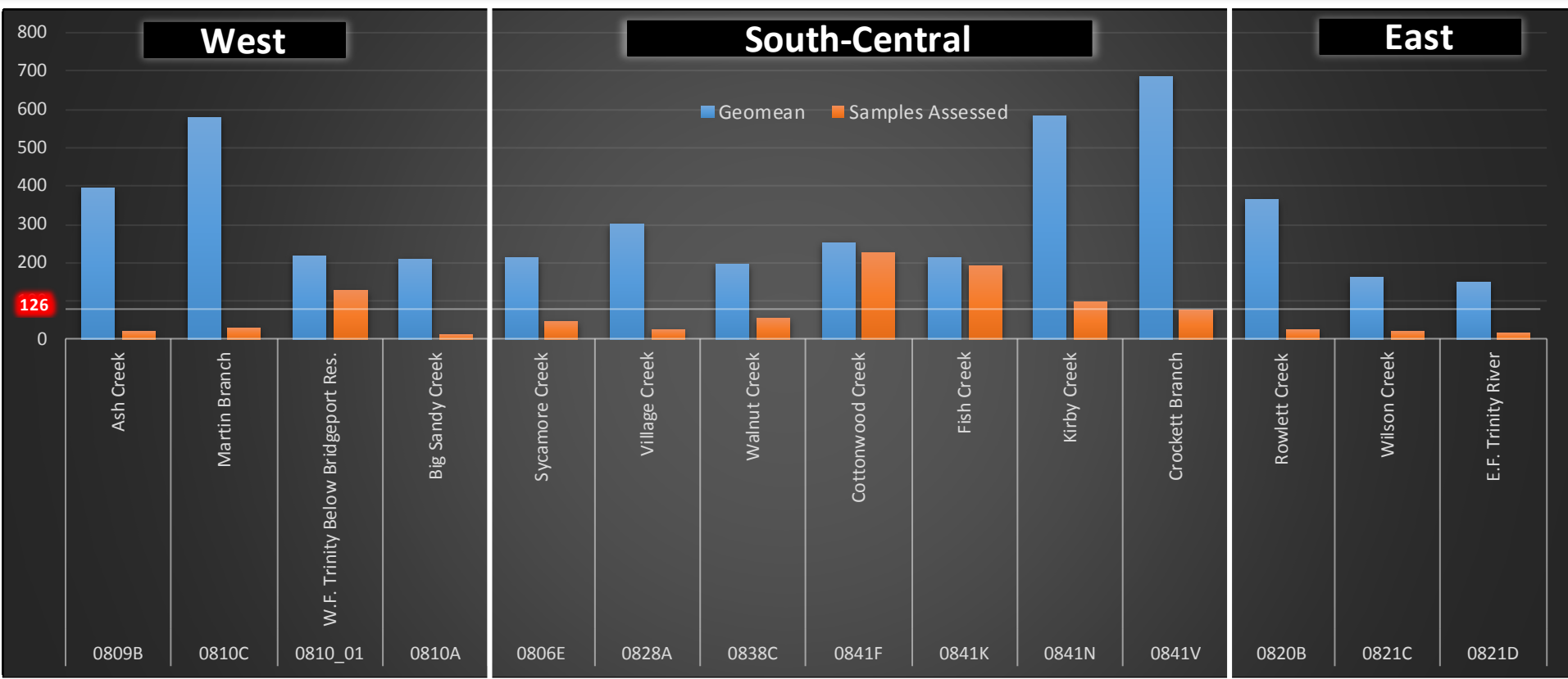
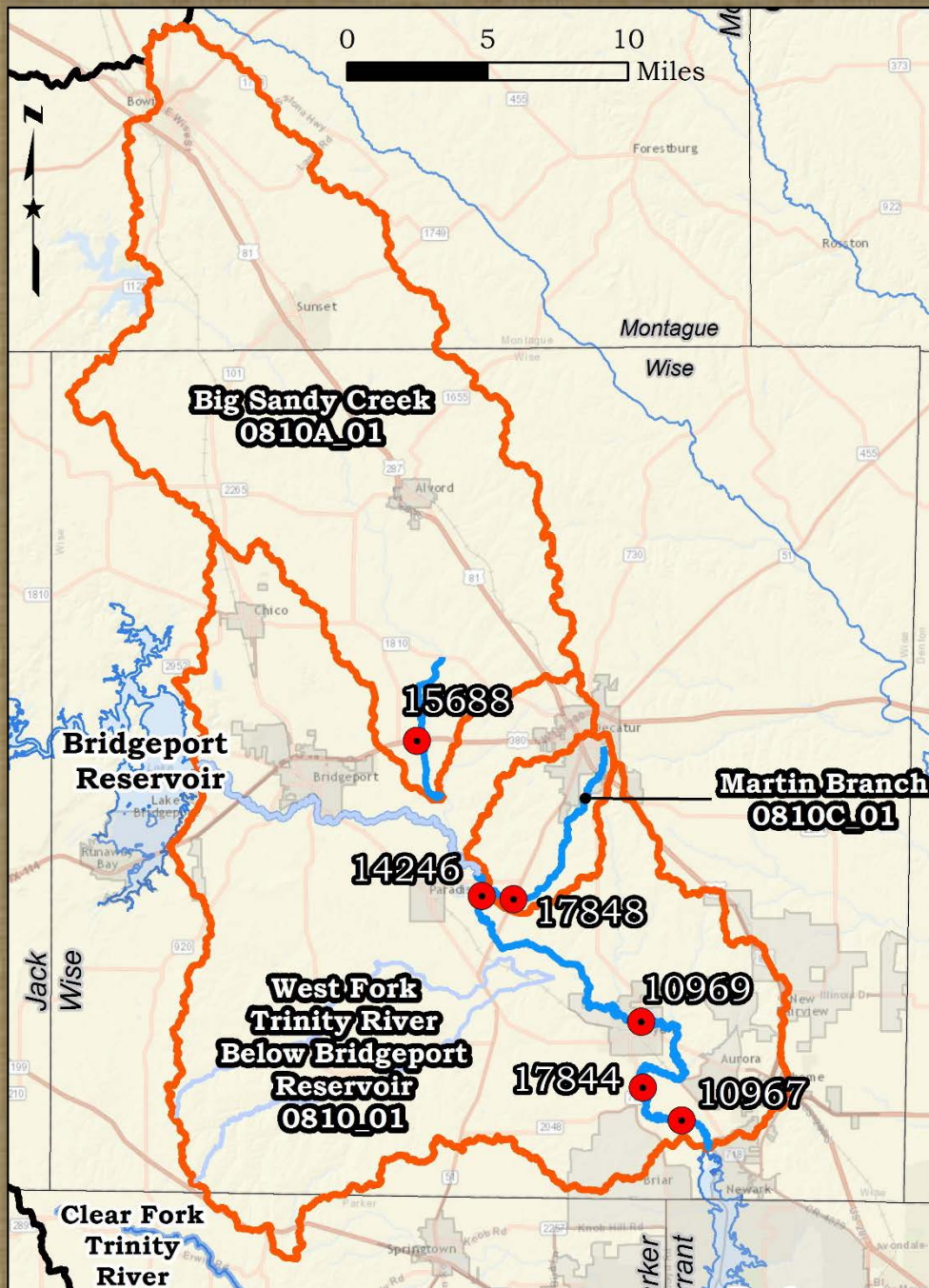

**BACTERIA DATA AVAILABILITY IN
IMPAIRED SUBWATERSHEDS
OF THE
UPPER TRINITY RIVER BASIN**

DAVID PENDERGRASS MAY 2016



CURRENT STATUS

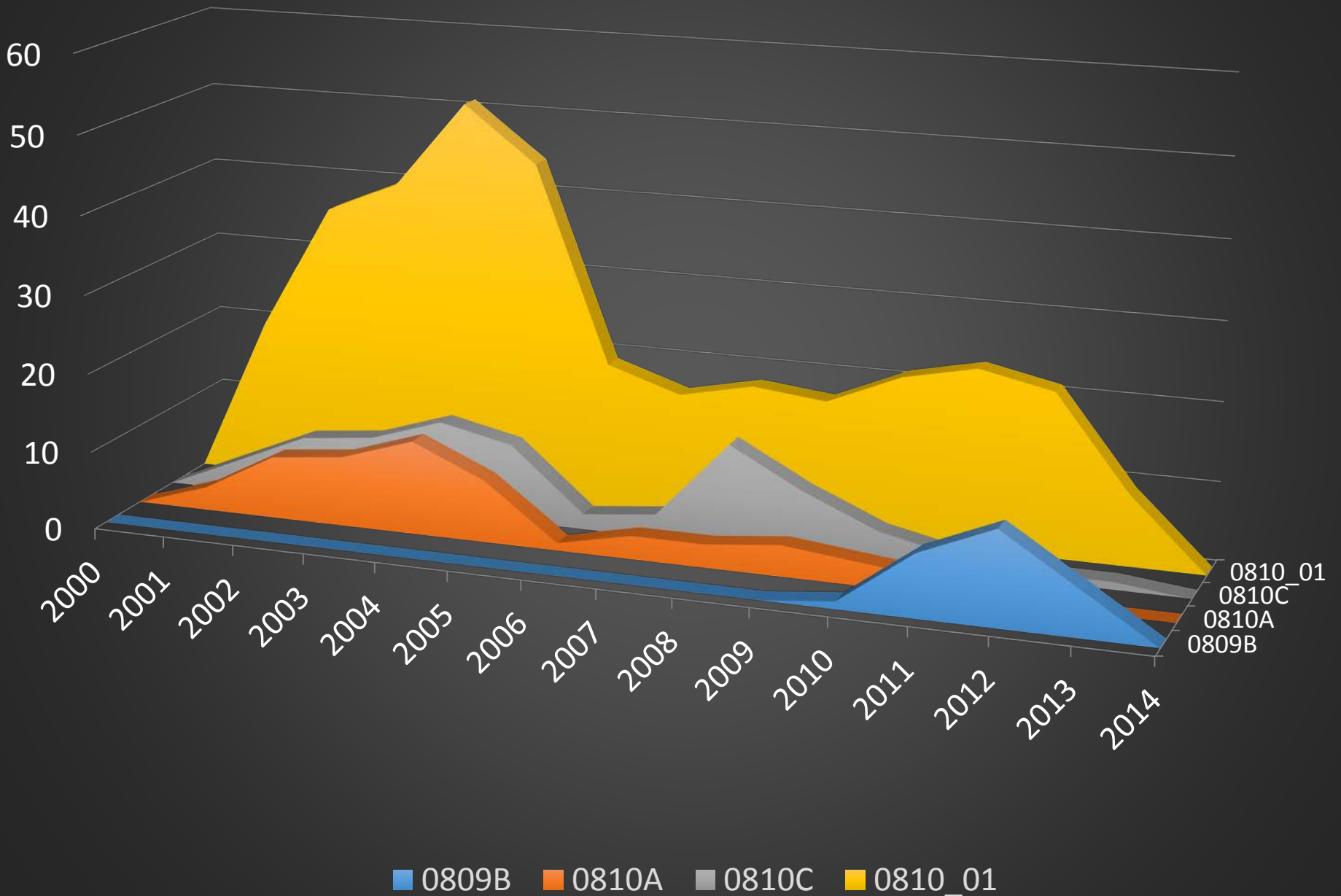


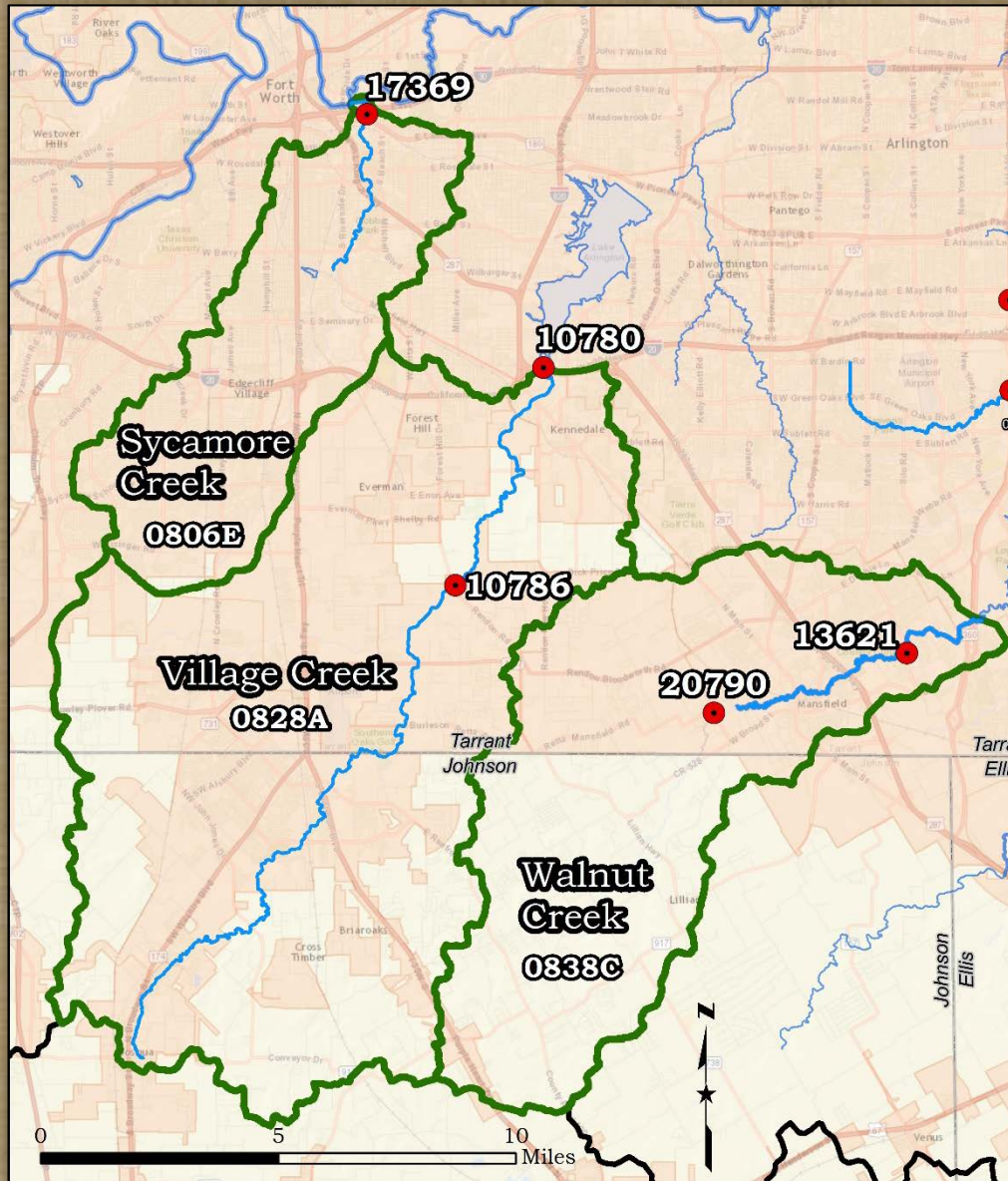


*Review of West
Region Impaired
Subwatersheds*

Number of *E. coli* Samples by Year

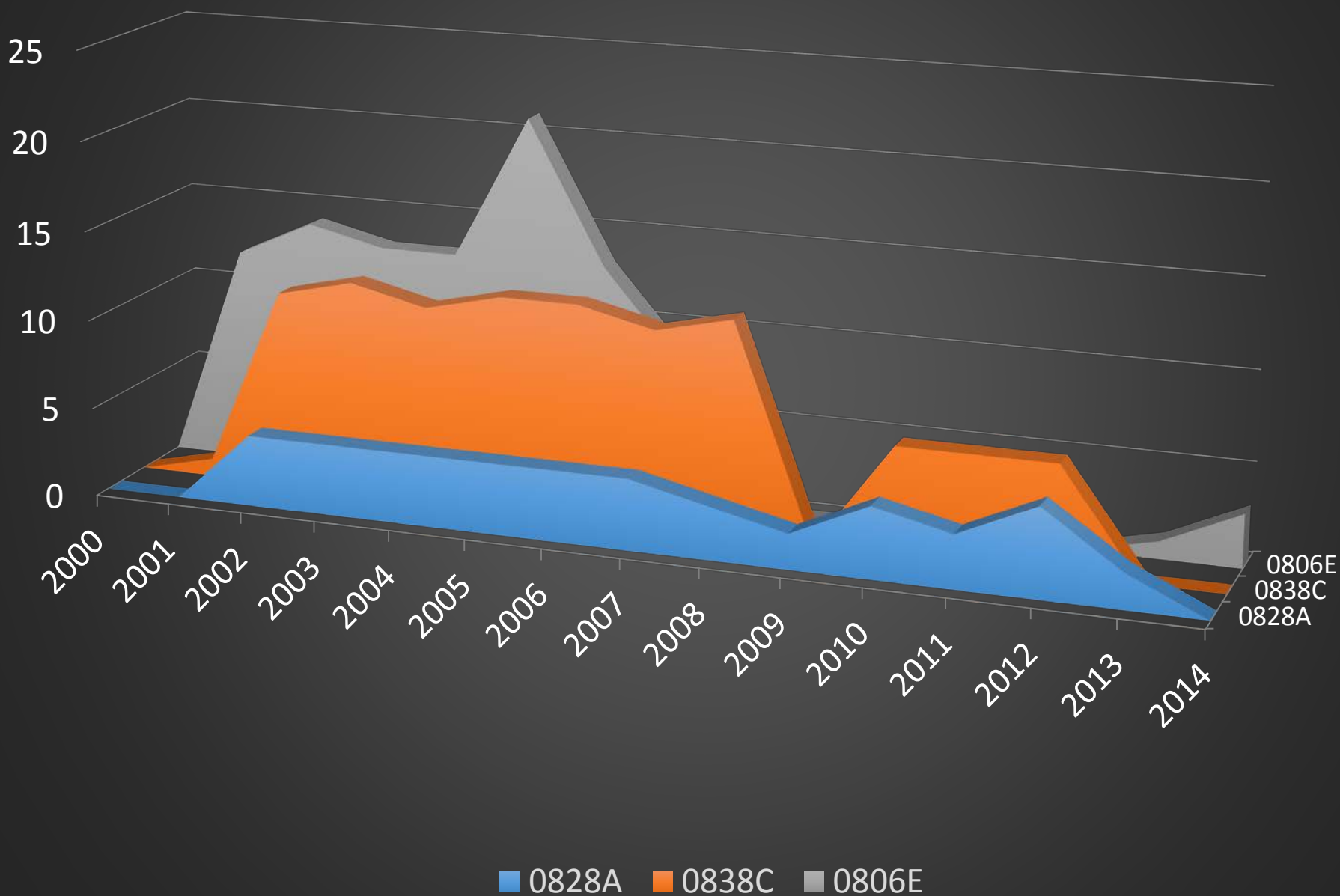
~ West Region ~

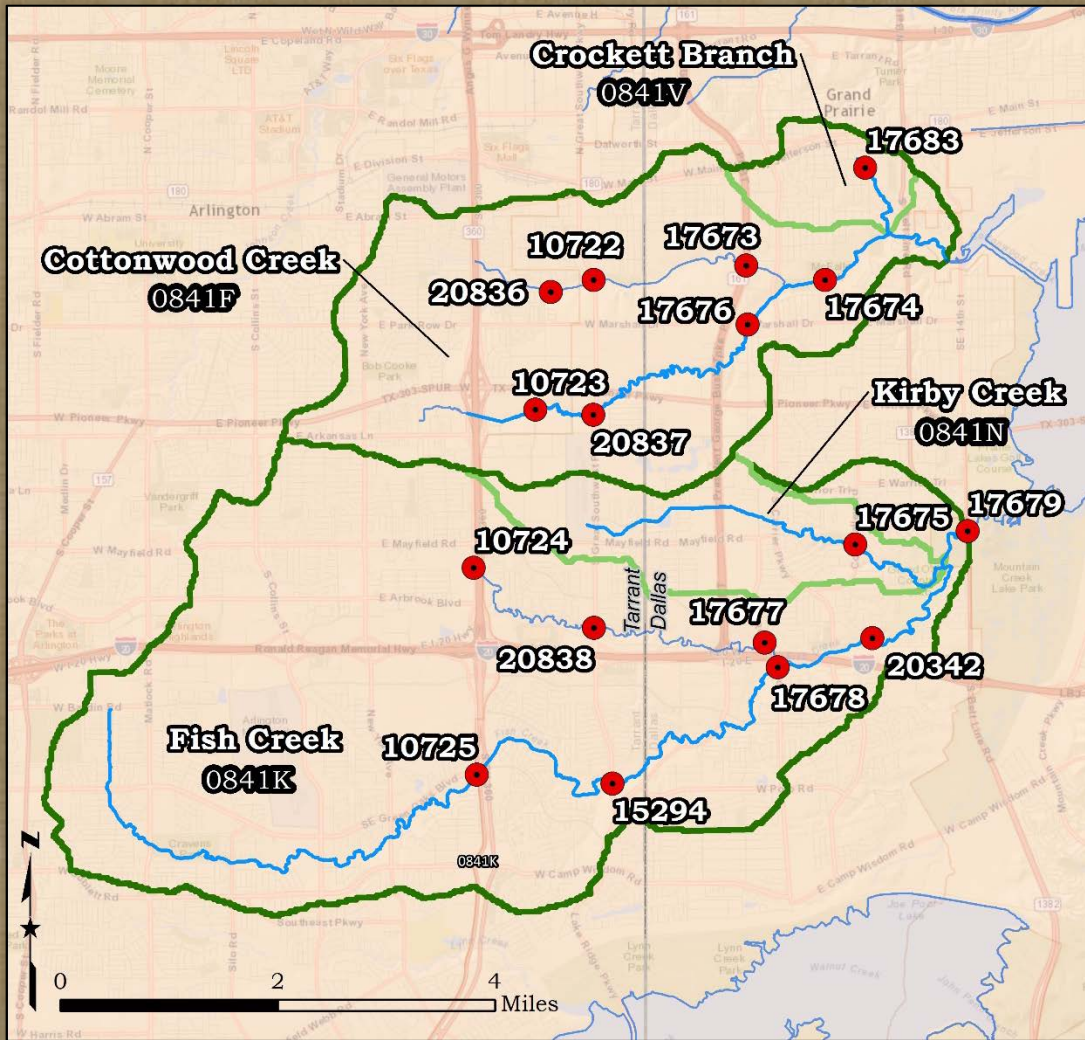




Review of Central Region Impaired Subwatersheds

Number of *E. coli* Samples by Year ~ South-Central Region ~

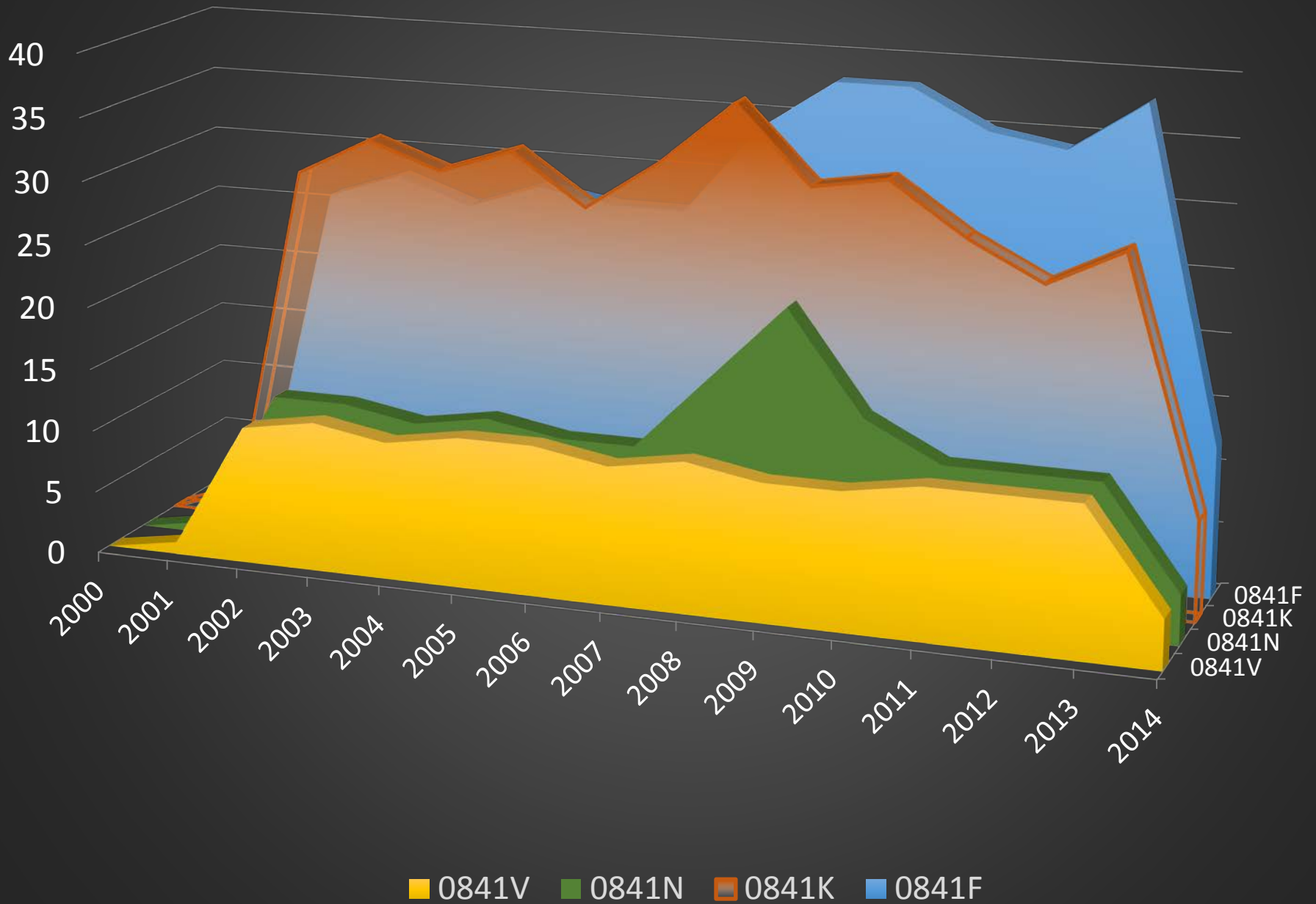


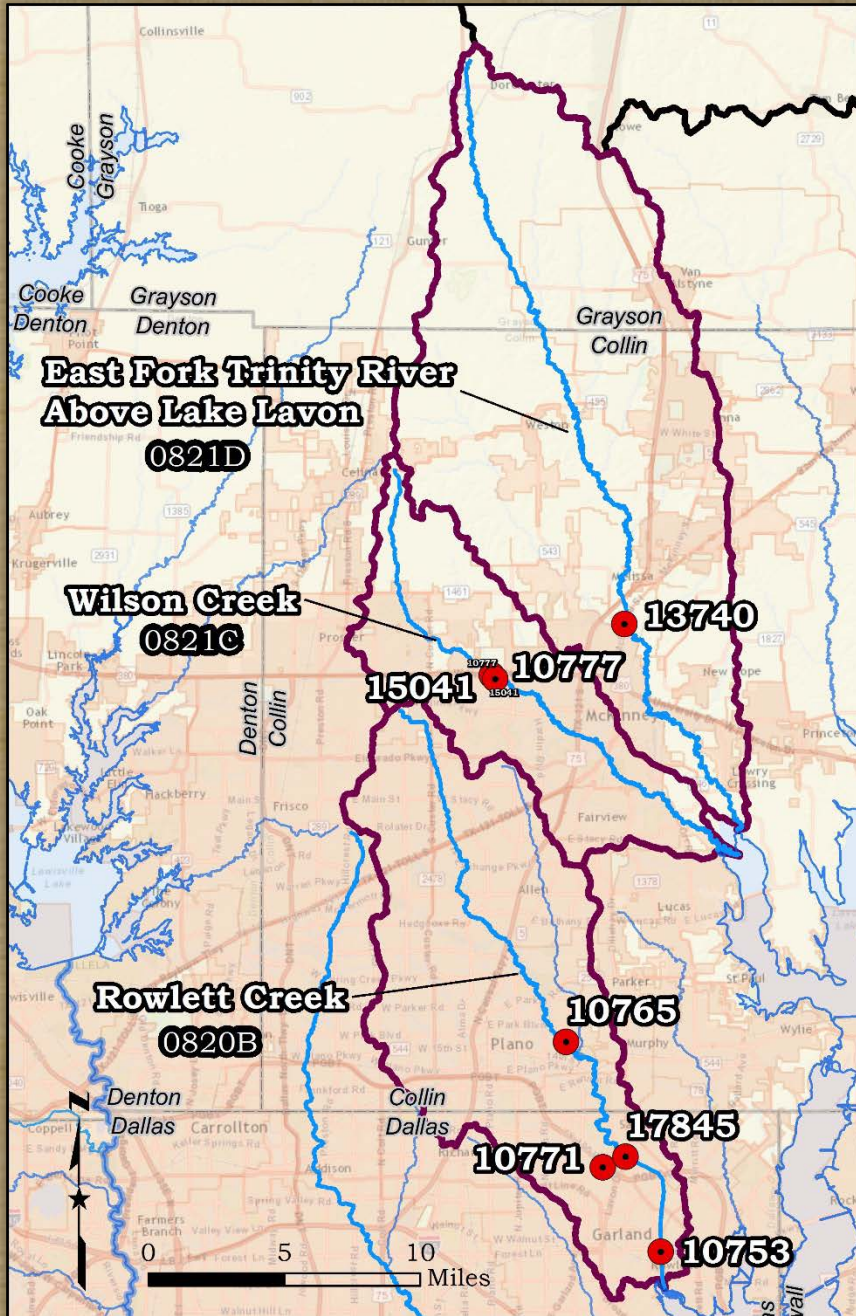


*Review of 0841
Impaired
Subwatersheds*

Number of *E. coli* Samples by Year

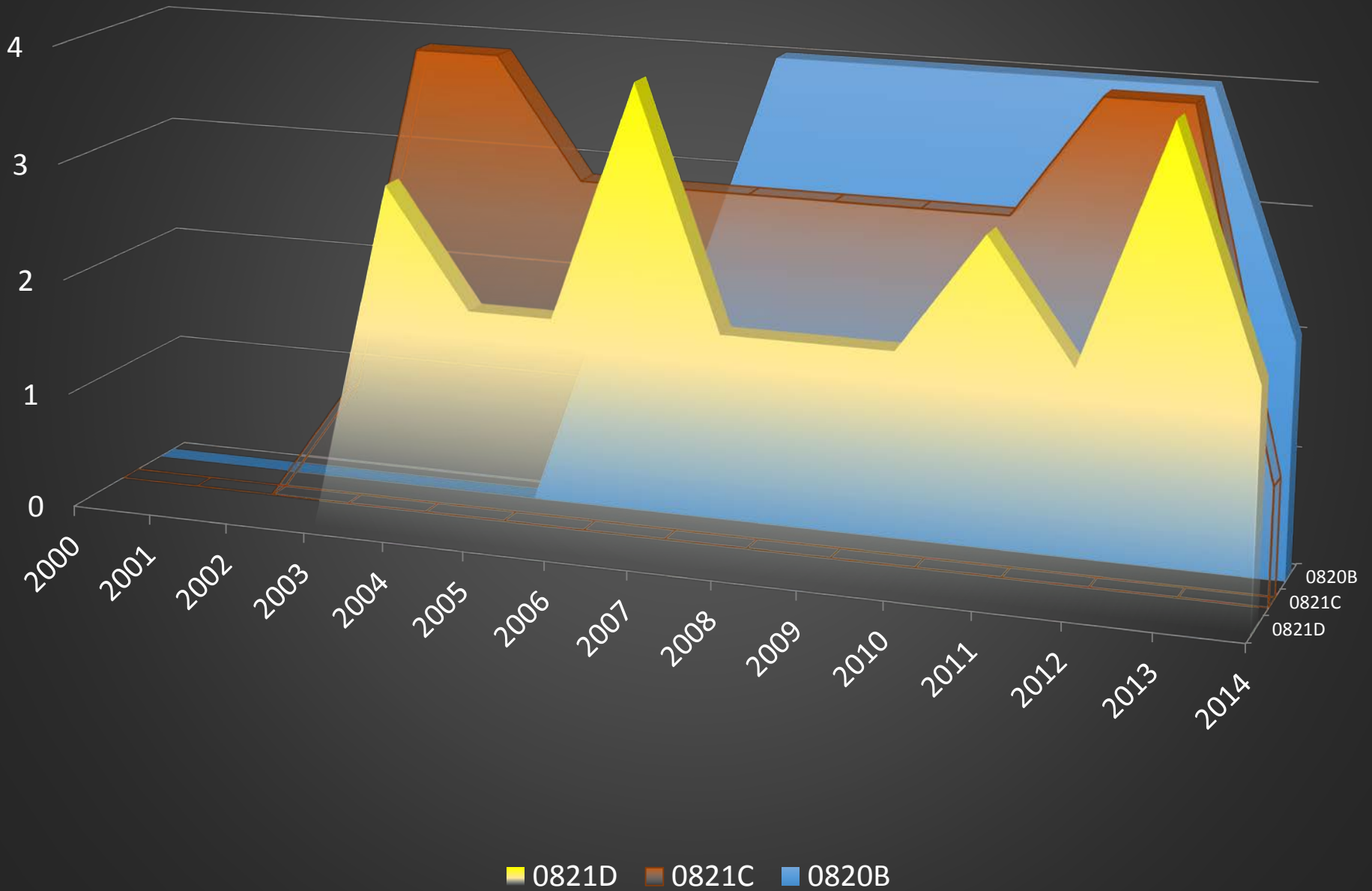
~ South-Central Region - 0841s ~





*Review of East
Region
Impaired
Subwatersheds*

Number of E. coli Samples by Year ~ East Region ~



FUTURE CONSIDERATIONS

Spatial and Temporal Considerations

- ❖ **Ensure sampling locations are downstream of known/suspected hotspots**
- ❖ **Target ambient conditions**
- ❖ **Explore impact of disturbed sediment stores on water-column concentrations**
High-rec vs. low-rec to establish baseline?

STATION DETAIL

AU	STATION	2000	2001	2002	2003	2004	2005	2006	2007	2008	2009	2010	2011	2012	2013	2014	TOTAL	
West Region																		
0809B_01	10854											1	8	12	6		27	
0810_01	10967		4	8	9	11	10	4	3	4	4	4	2	2	1		66	
	10969		8	12	13	16	14	8	7	6	5	8	13	15	7		132	
	14246		4	8	9	12	10	3	3	4	4	4	2	2	1		66	
	17844		4	8	9	12	10	4	3	4	4	5	6	2			71	
0810A_01	15688		3	8	9	12	8	1	3	3	4	3	2				56	
0810C_01	17848		4	8	9	12	10	2	3	13	8	4	2	1	1		77	
South-Central Region																		
0806E_01	17369		12	14	13	13	21	13	8						1	3	98	
0828A_01	10780			4	4	4	4	4	4	3	2	4	2				35	
	10786												1	5	2		8	
0838C_01	13621		1	11	12	11	12	12	11	12		3	3	4			92	
	20790											3	3	2			8	
0841F_01	10723			4	4	4	4	4	4	2	2	4	2		2		36	
	17674		1	11	12	11	12	11	11	20	16	12	12	11	12	4	156	
	17676		1	11	12	11	12	12	12	12	12	12	12	13	12	4	148	
	20837										8	10	9	10	12	4	53	
0841K_01	10725			4	4	4	4	2	4	3	2	4	2		2		35	
	15294										10	12	12	12	12	4	62	
	17677		1	12	12	11	12	11	12	12							83	
	17679		1	9	12	11	12	12	12	12	10	12	12	13	12	4	144	
	20342										8	7						15
0841N_01	17675		1	12	12	11	12	11	11	17	23	15	12	12	12	4	165	
0841V_01	17683		1	11	12	11	12	12	11	12	11	11	12	12	12	4	144	
East Region																		
0820B_01	10753							2	2	4	4	4	4	4	4	2	30	
0821C_01	10777				1	4	4	3	3	3	3	3	3	4	4	1	36	
0821D_01	13740					3	2	2	4	2	2	2	3	2	4	2	28	