

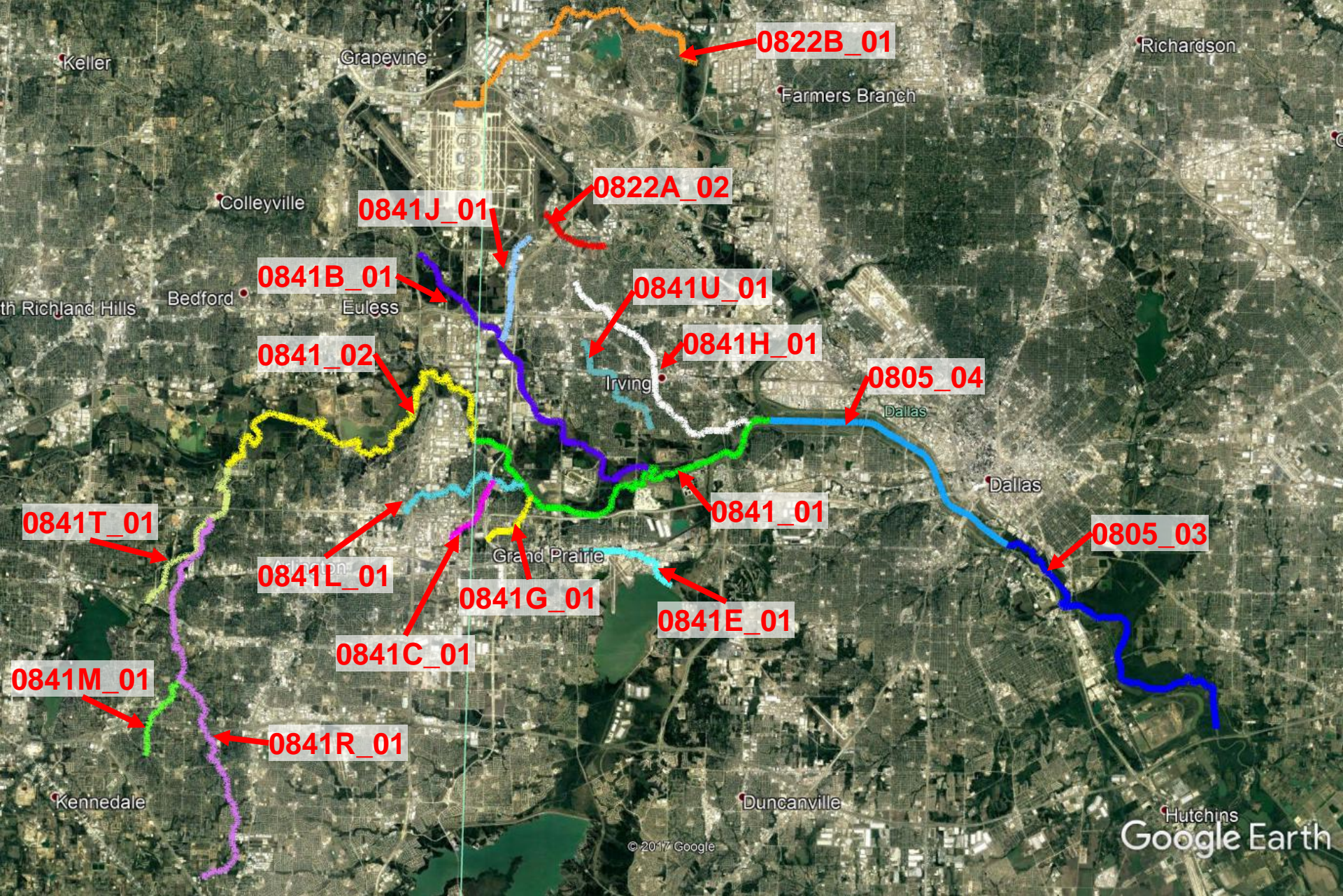


Trinity River Authority of Texas
Enriching the Trinity basin as a resource for Texans

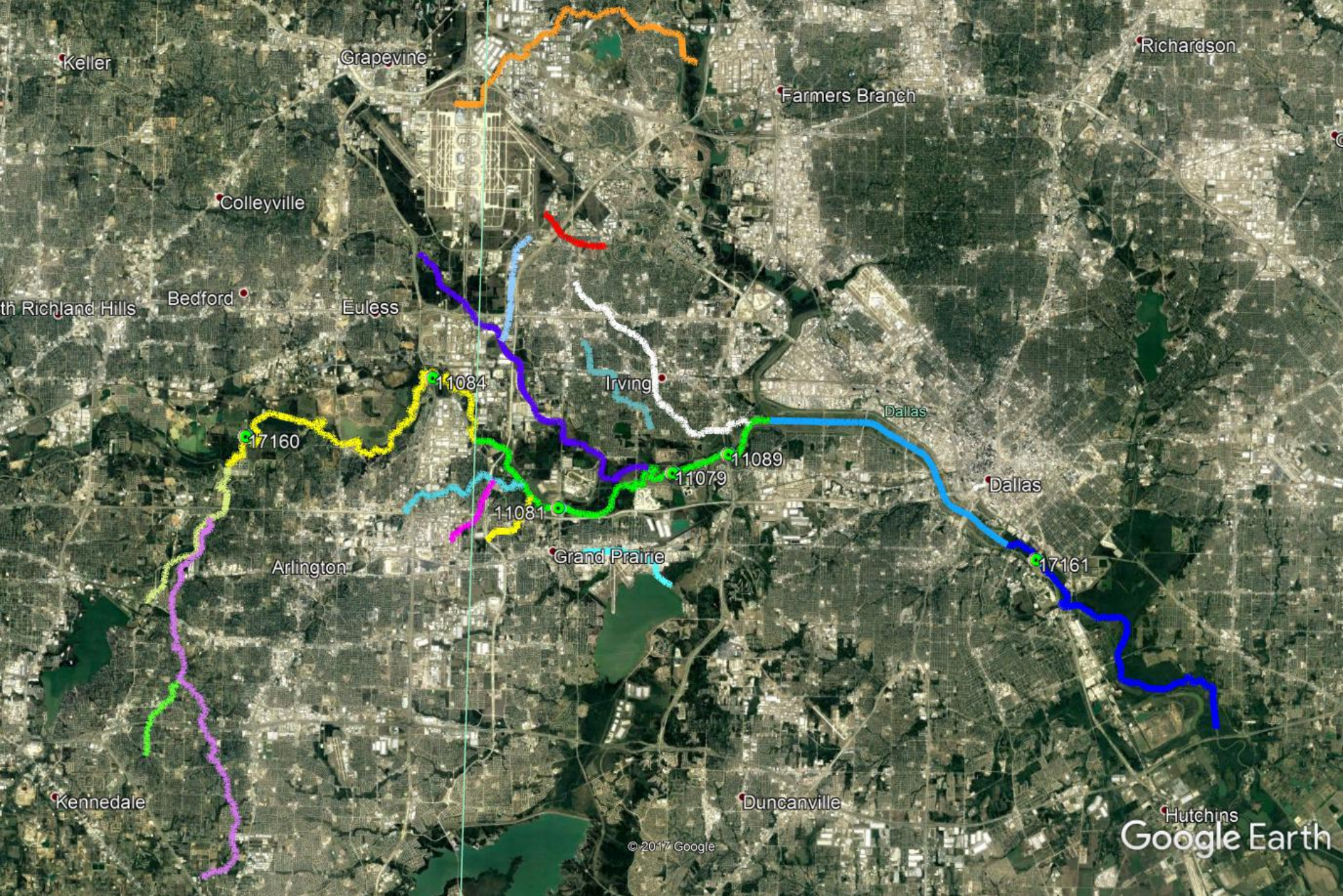
Monitoring Efforts and *E. coli* Results

Wastewater Treatment ▪ Water Treatment ▪ Water Storage ▪ Lake Livingston ▪ Recreation





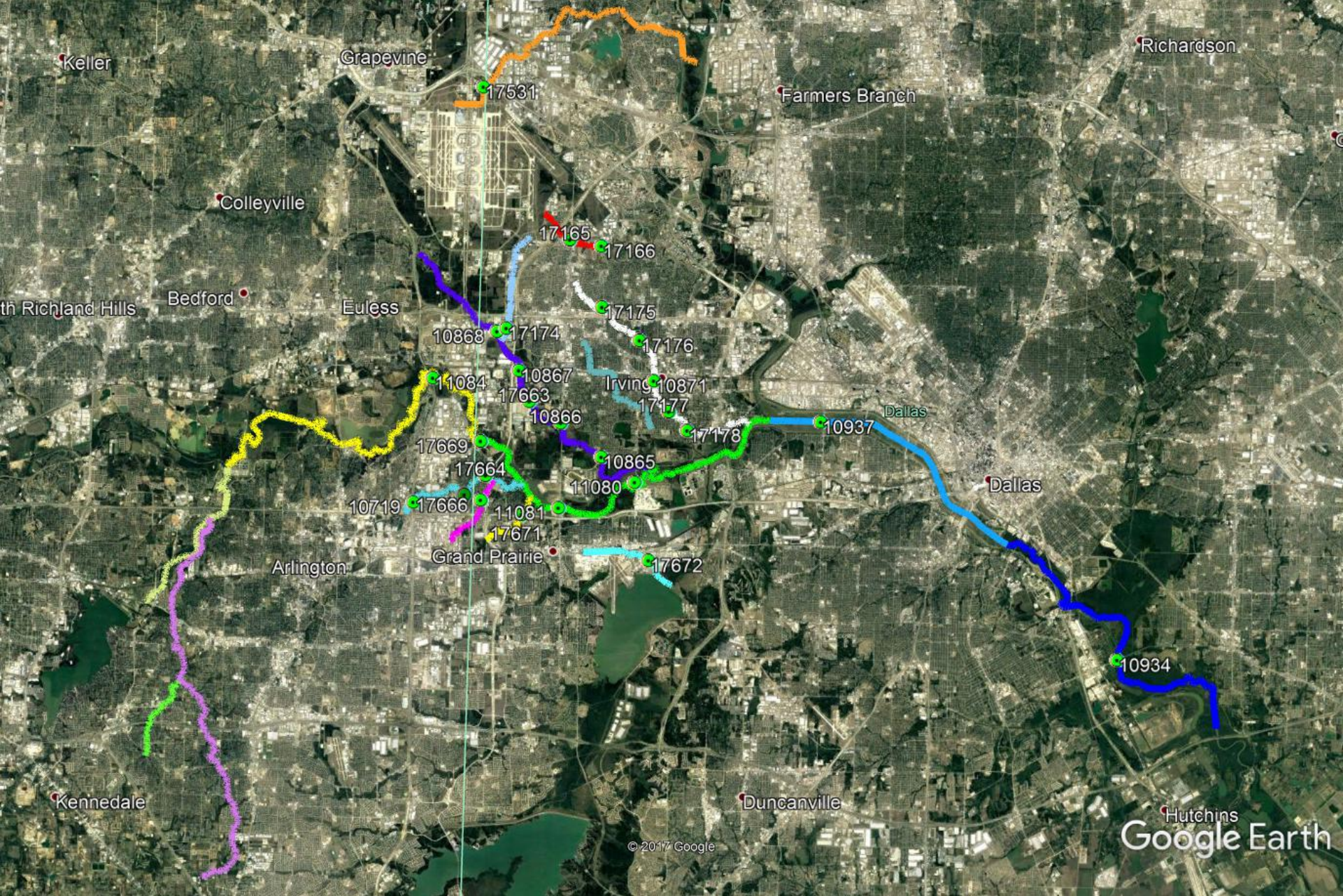
17 TMDL Assessment Units



2000

6 sites

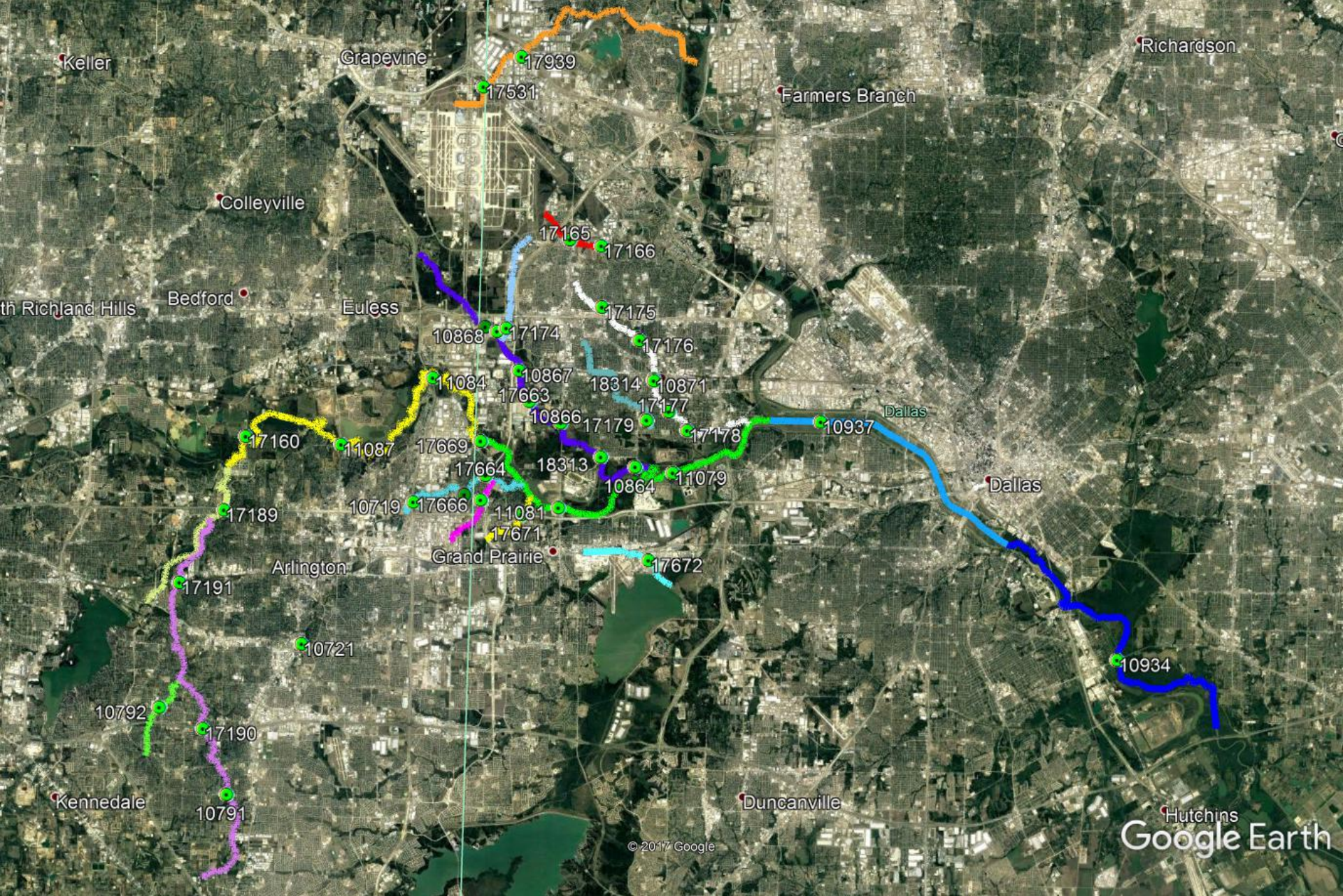
7 samples



© 2017 Google

Hutchins
Google Earth

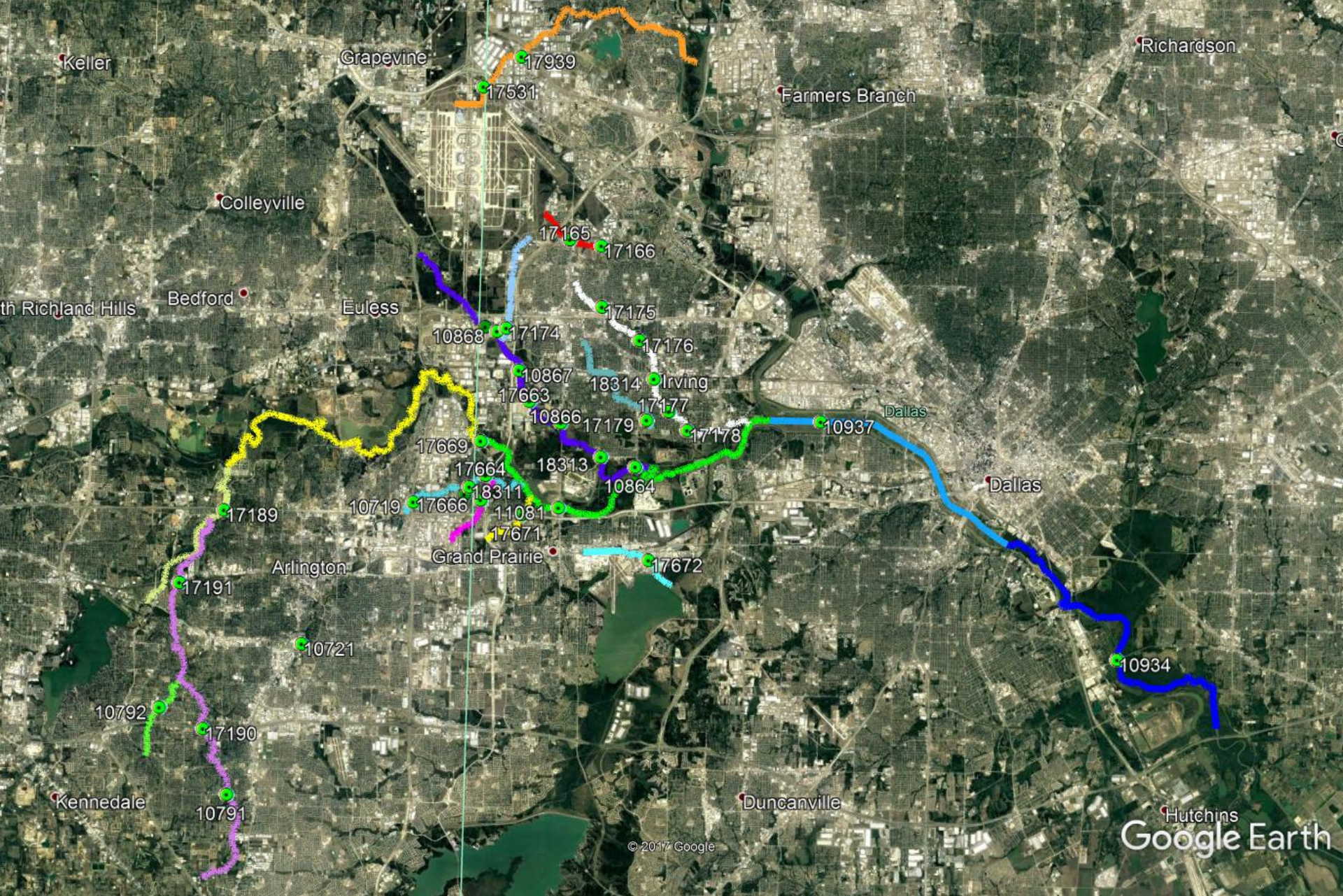
2001 26 sites 63 samples



2002

40 sites

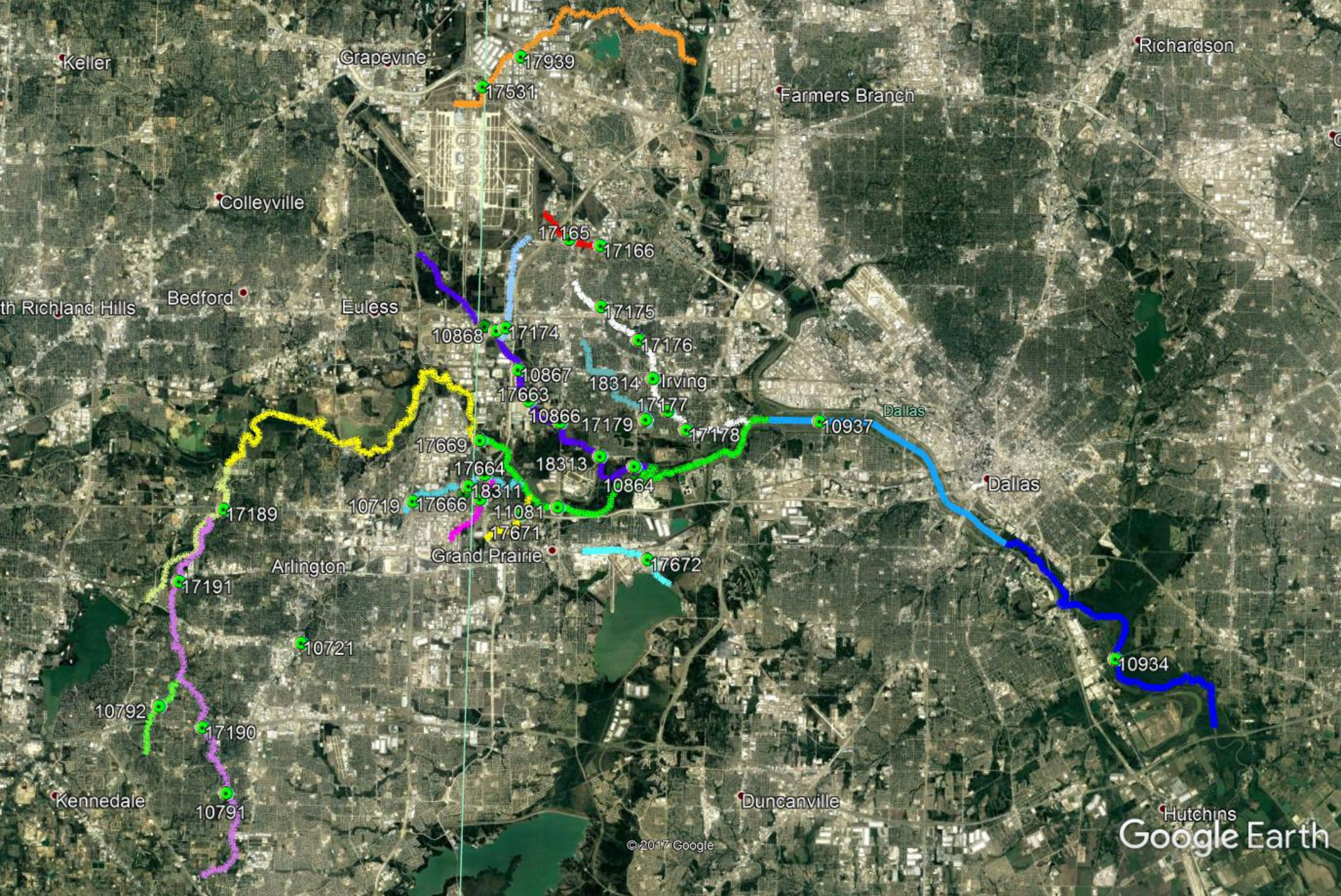
296 samples



2003

35 sites

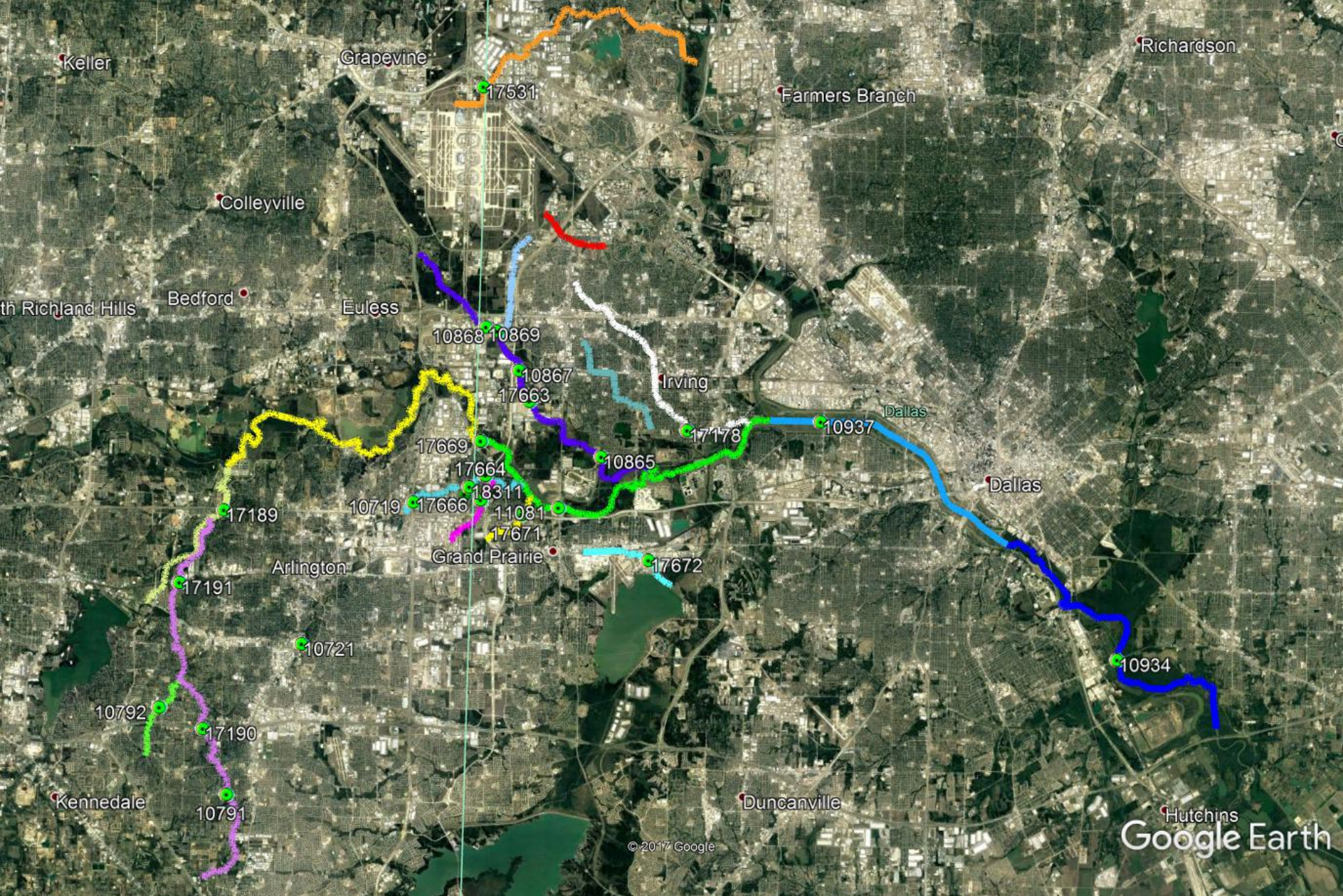
331 samples



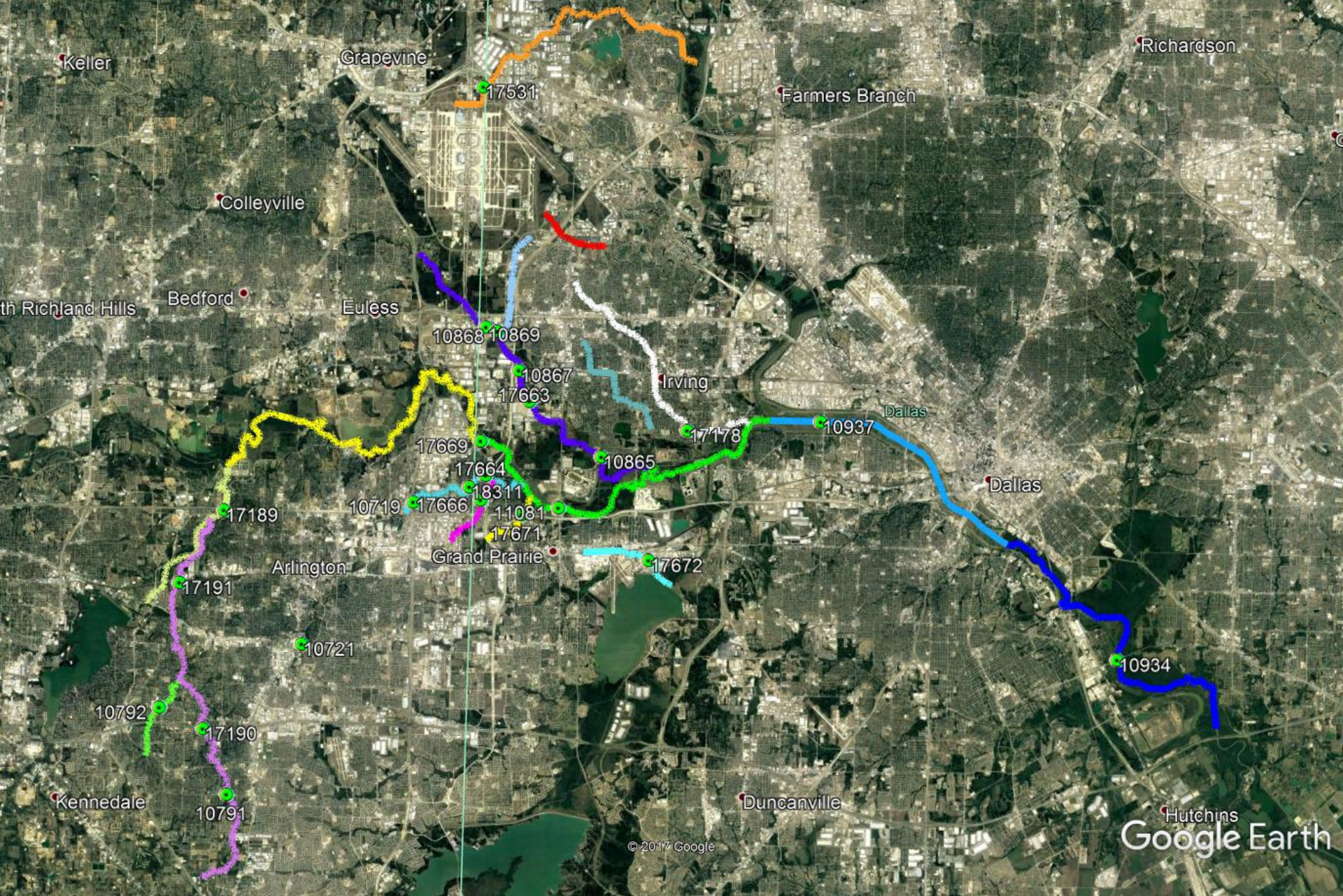
2004

35 sites

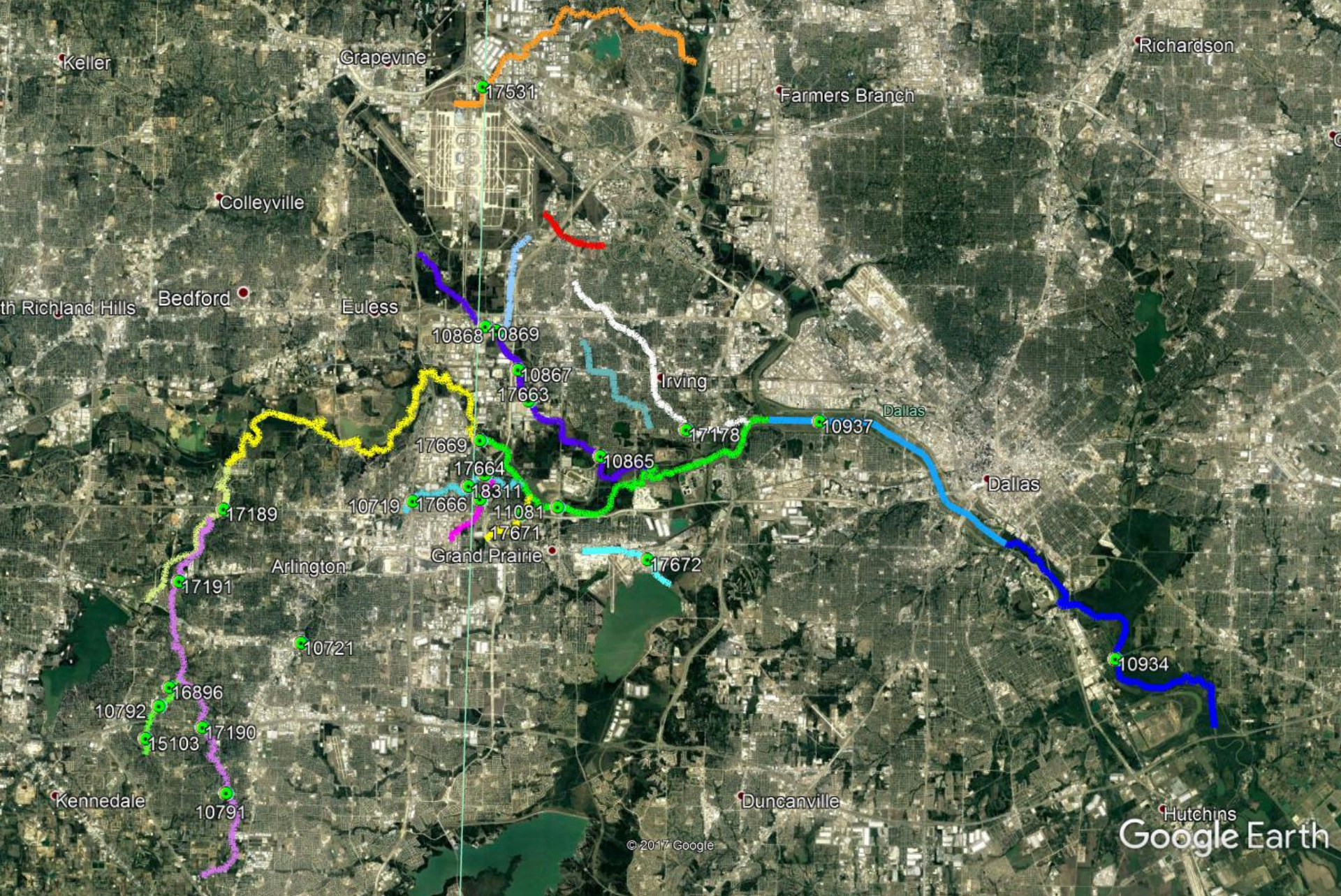
297 samples



2005 24 sites 166 samples

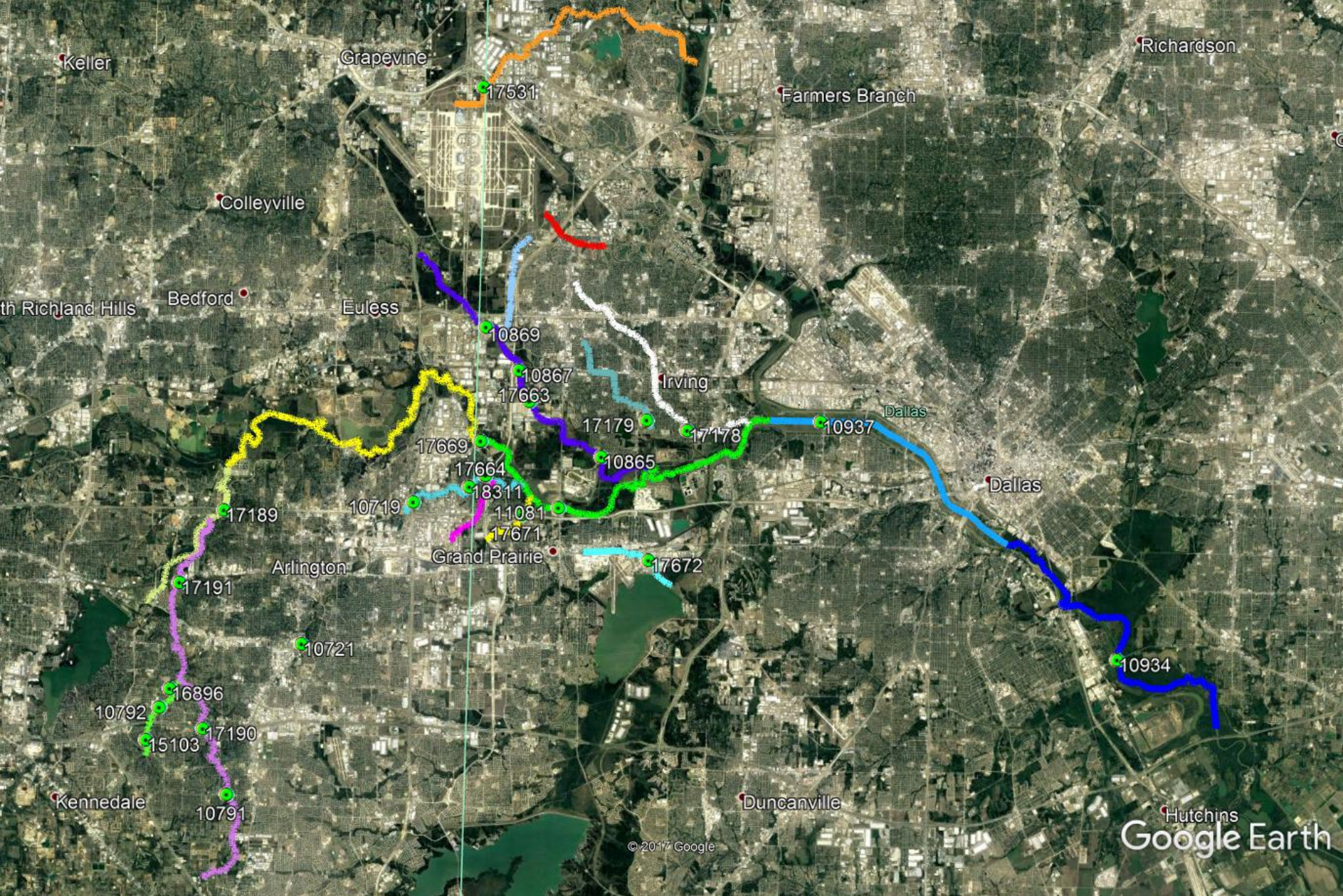


2006 23 sites 160 samples

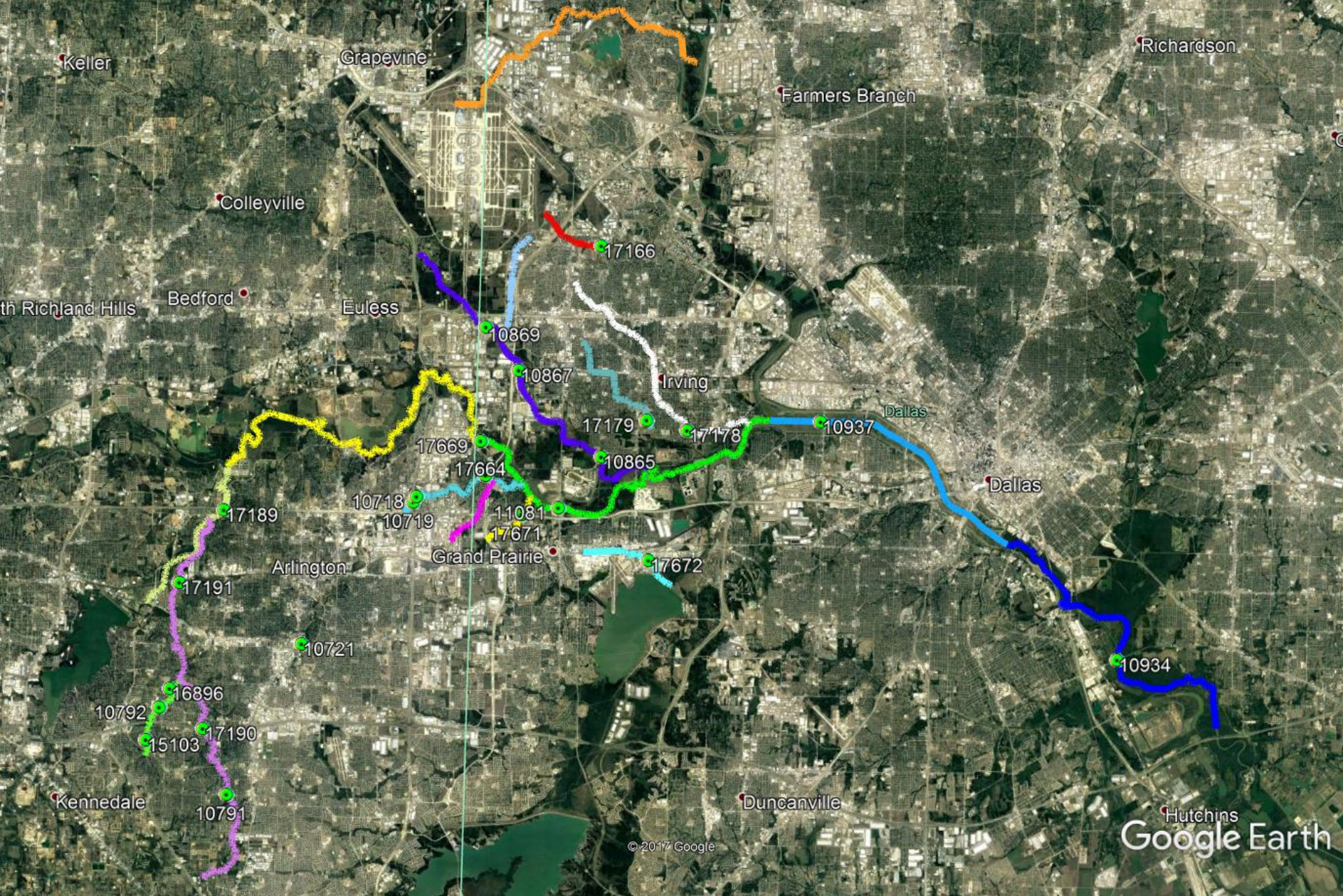


2007 25 sites

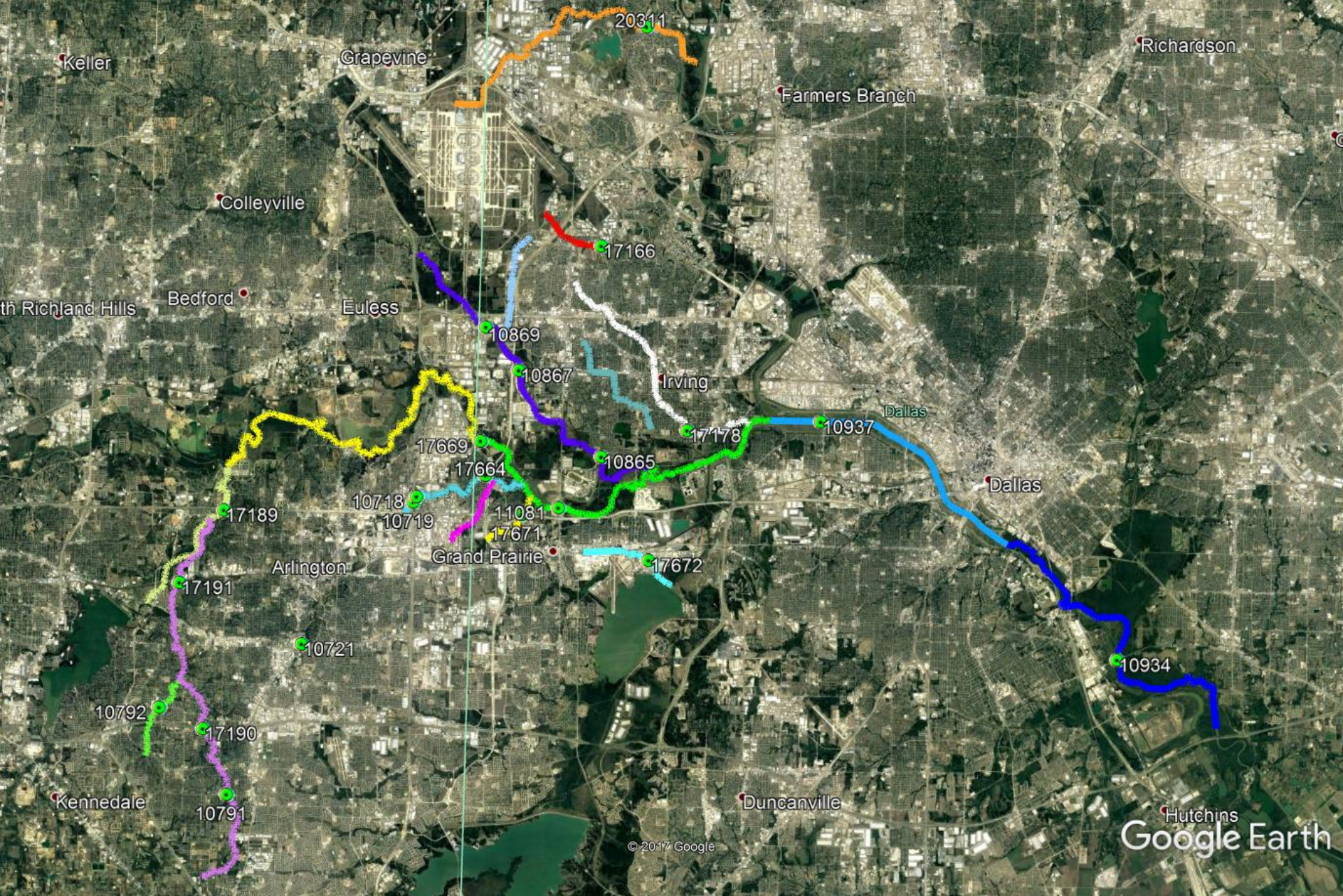
158 samples



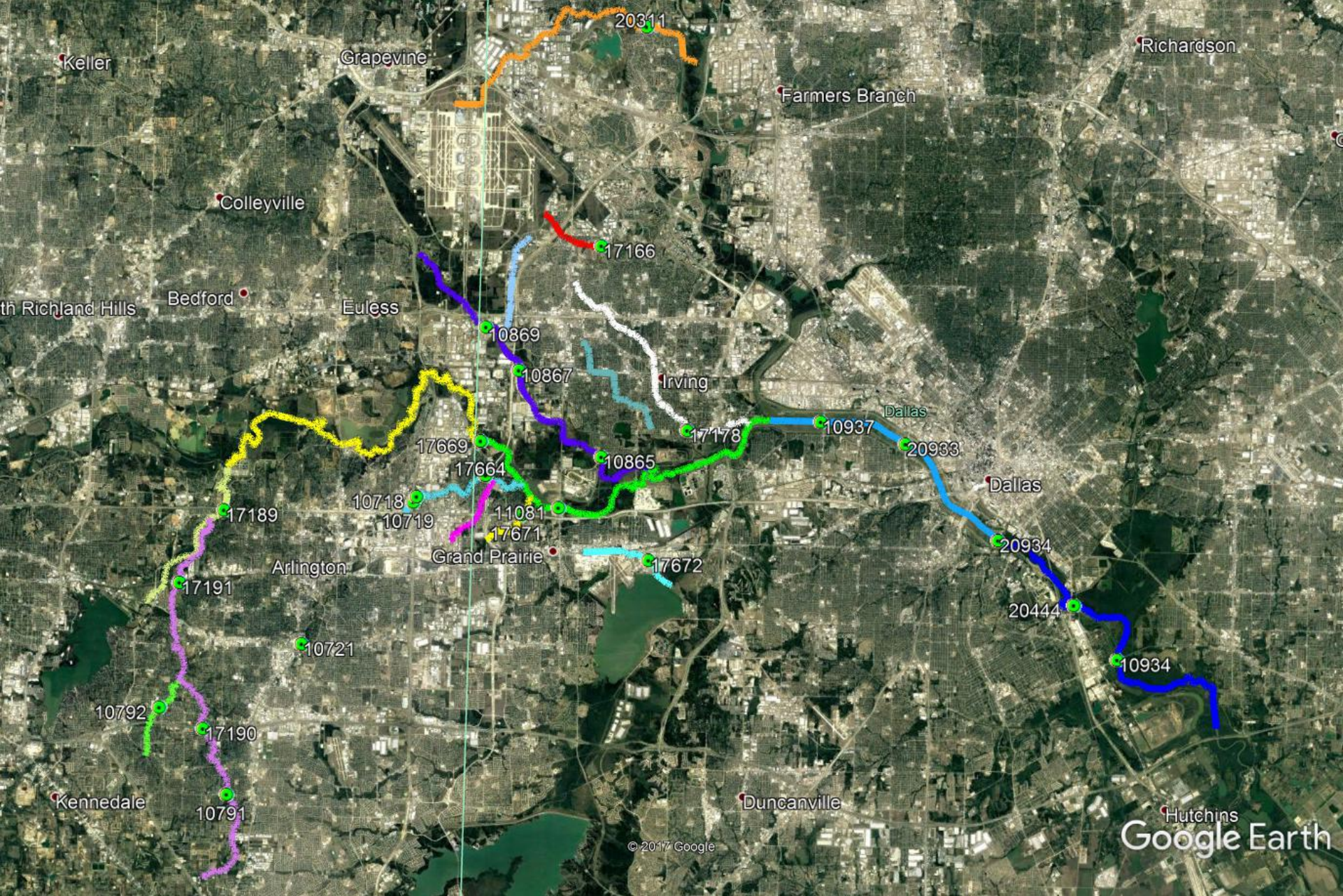
2008 **24 sites** **130 samples**



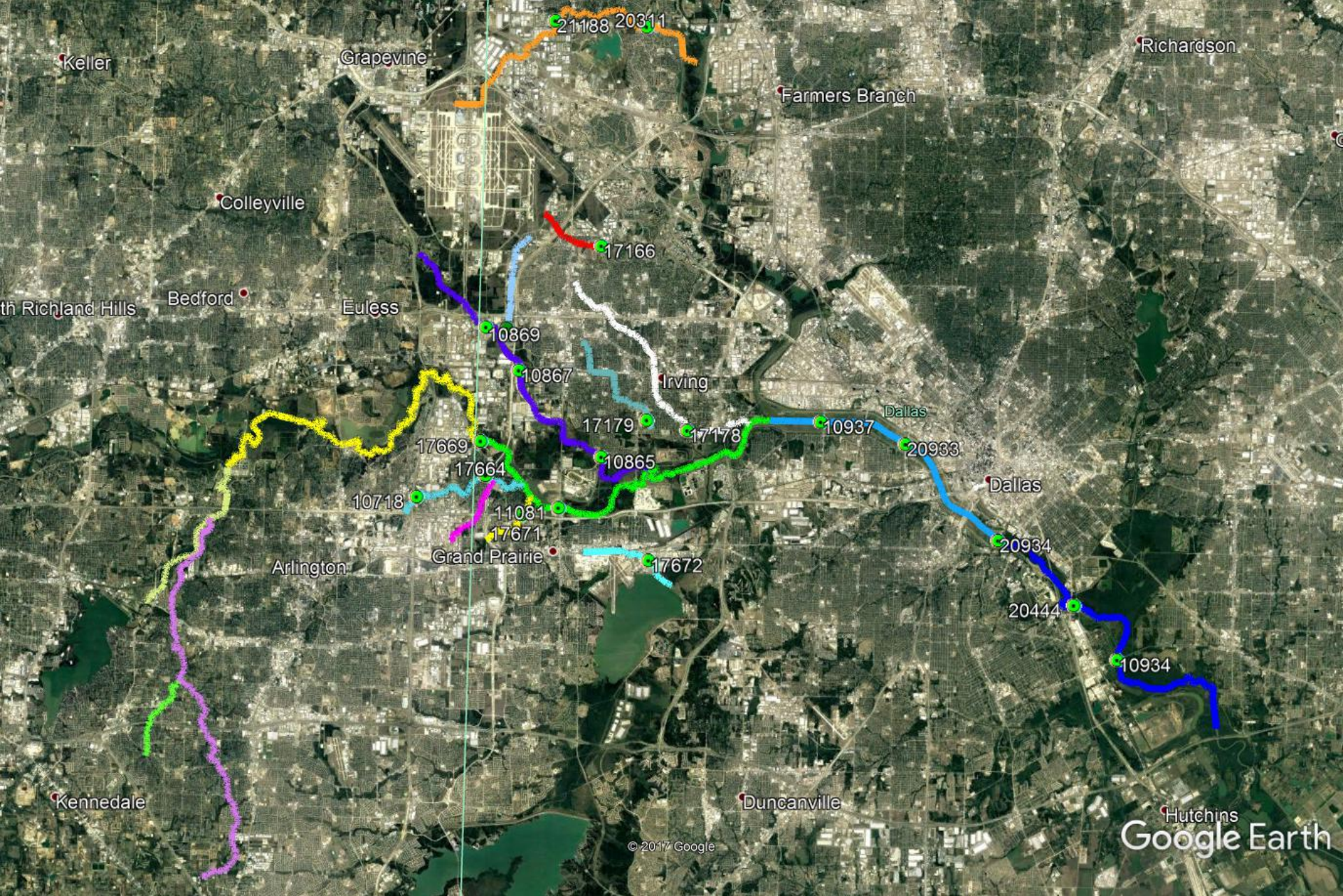
2009 23 sites 126 samples



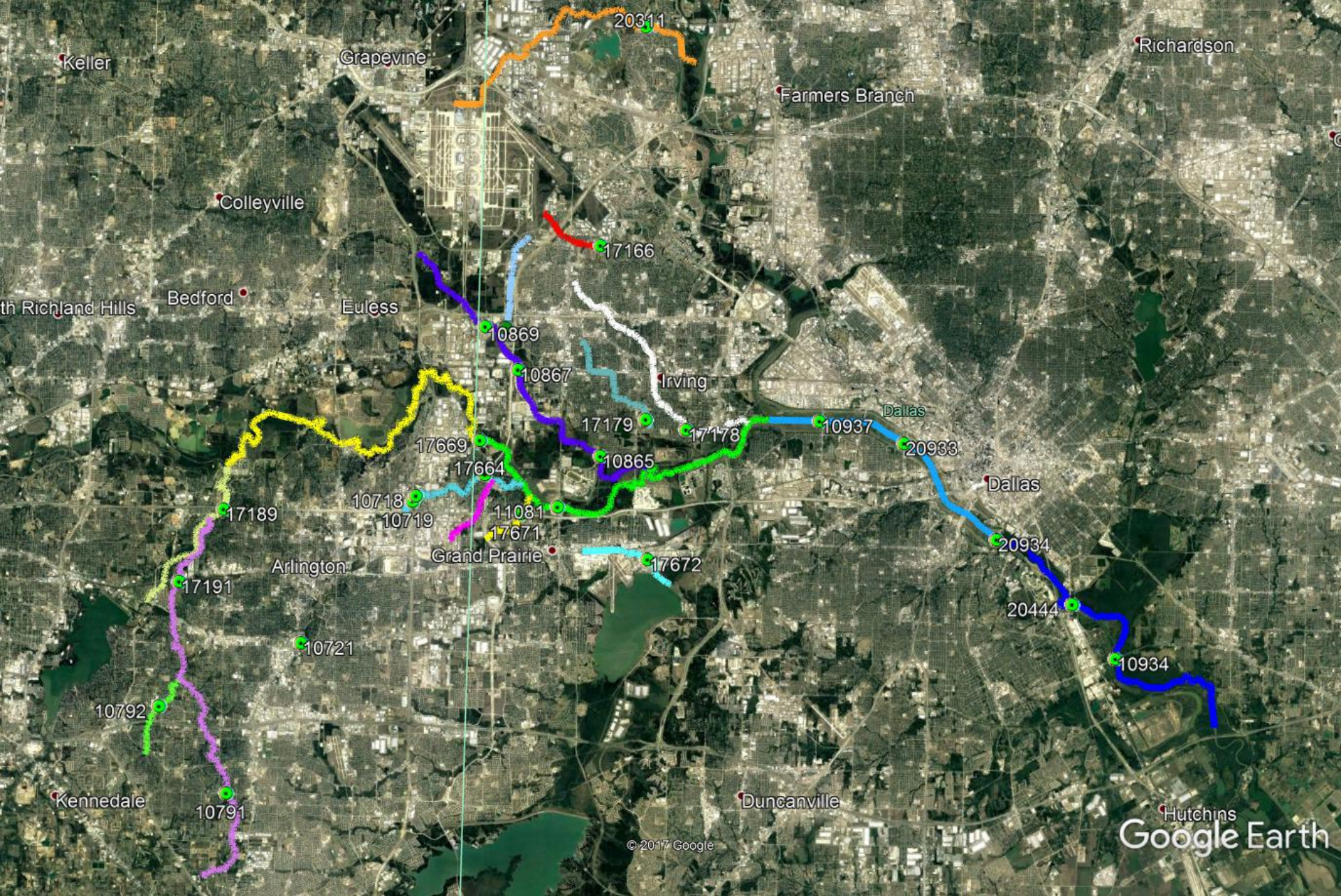
2010 21 sites 140 samples



2011 24 sites 125 samples



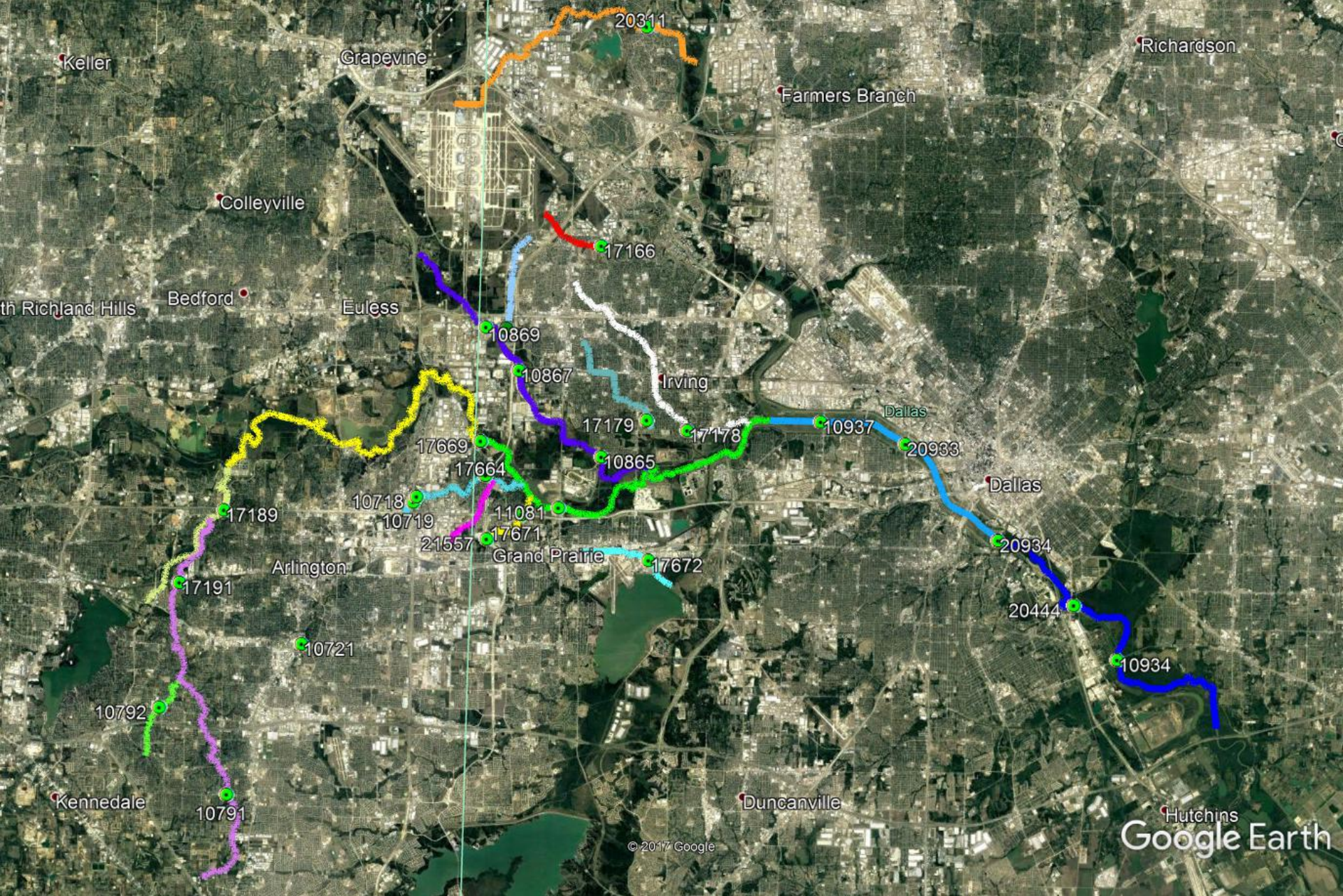
2012 20 sites 136 samples



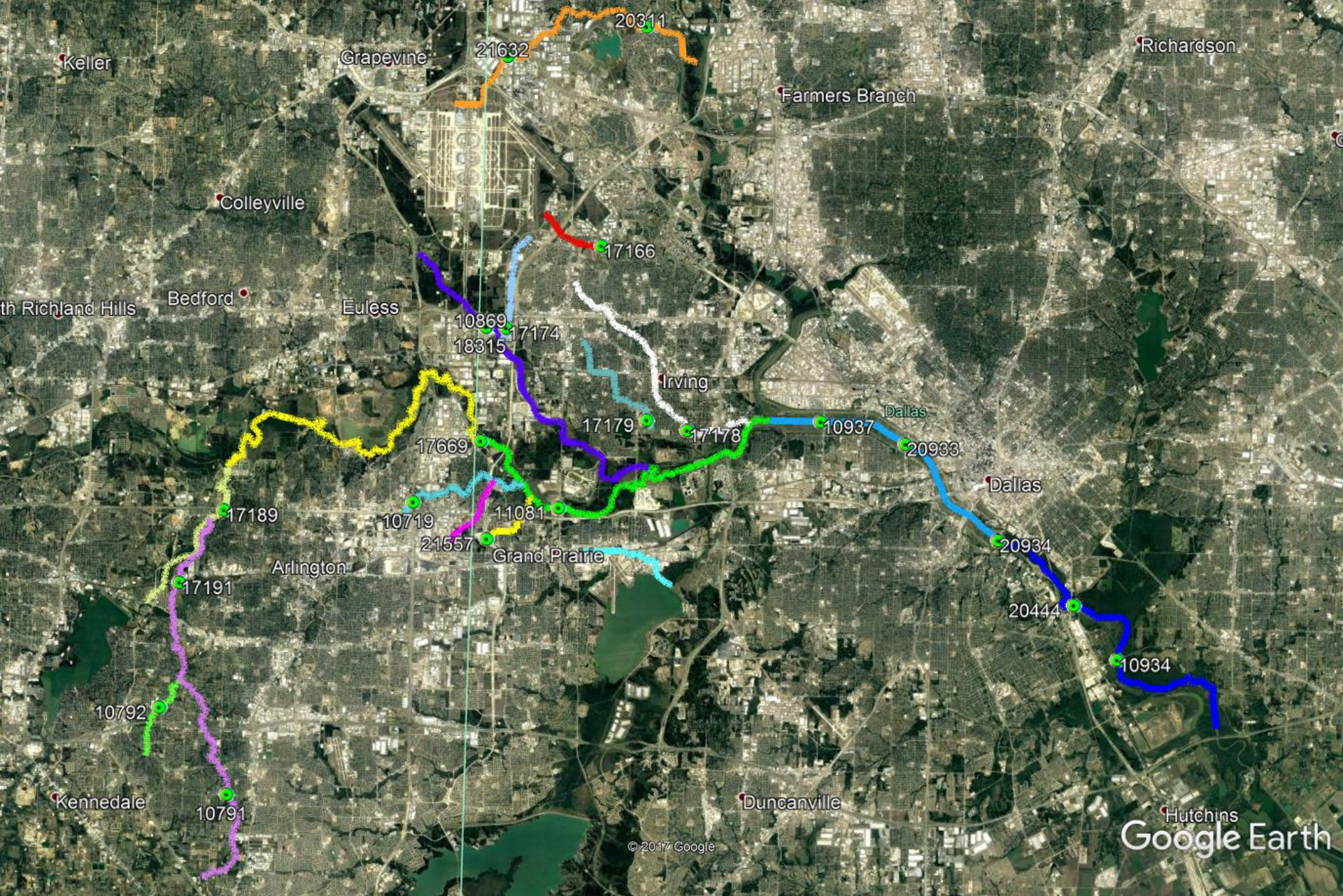
2013

25 sites

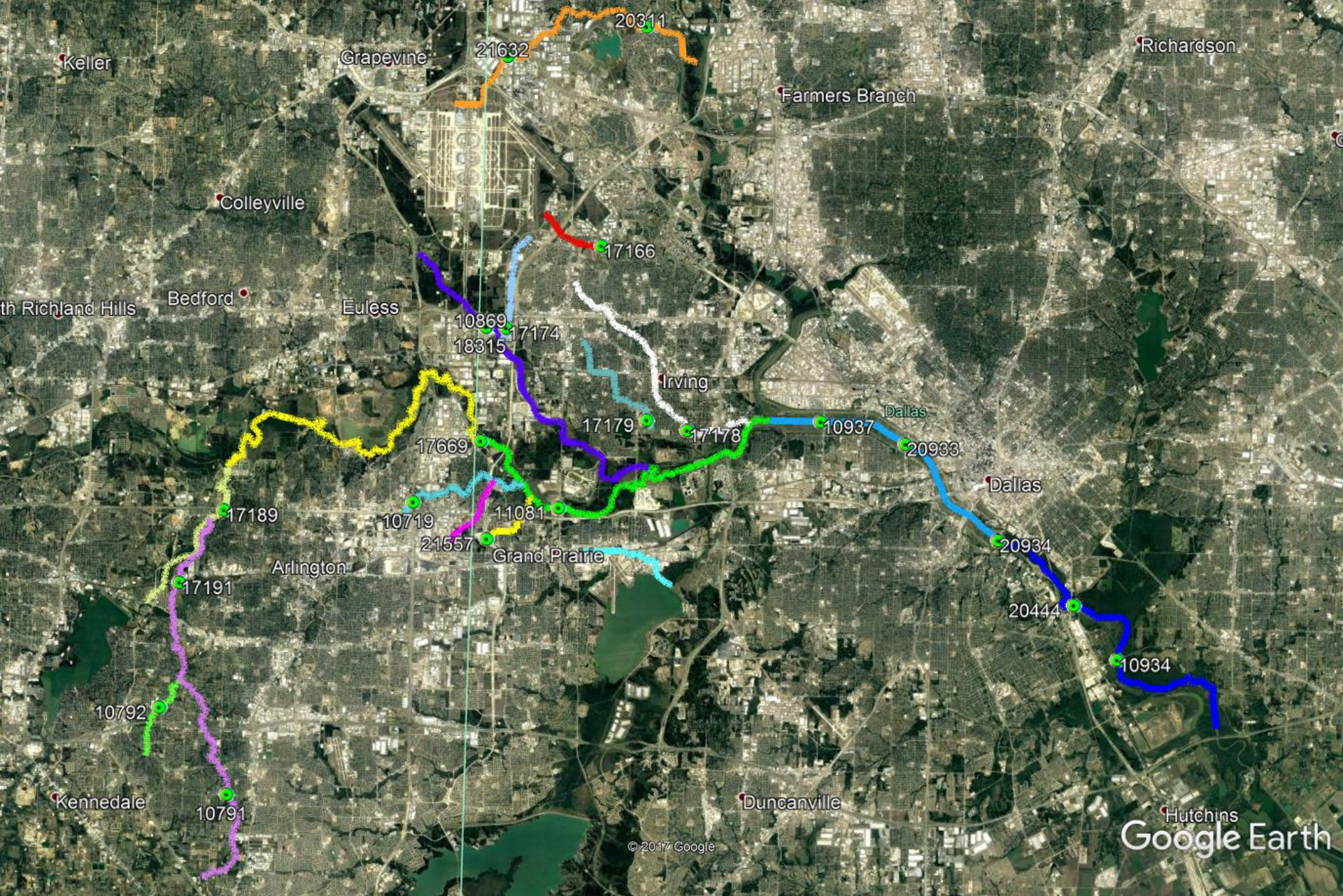
153 samples



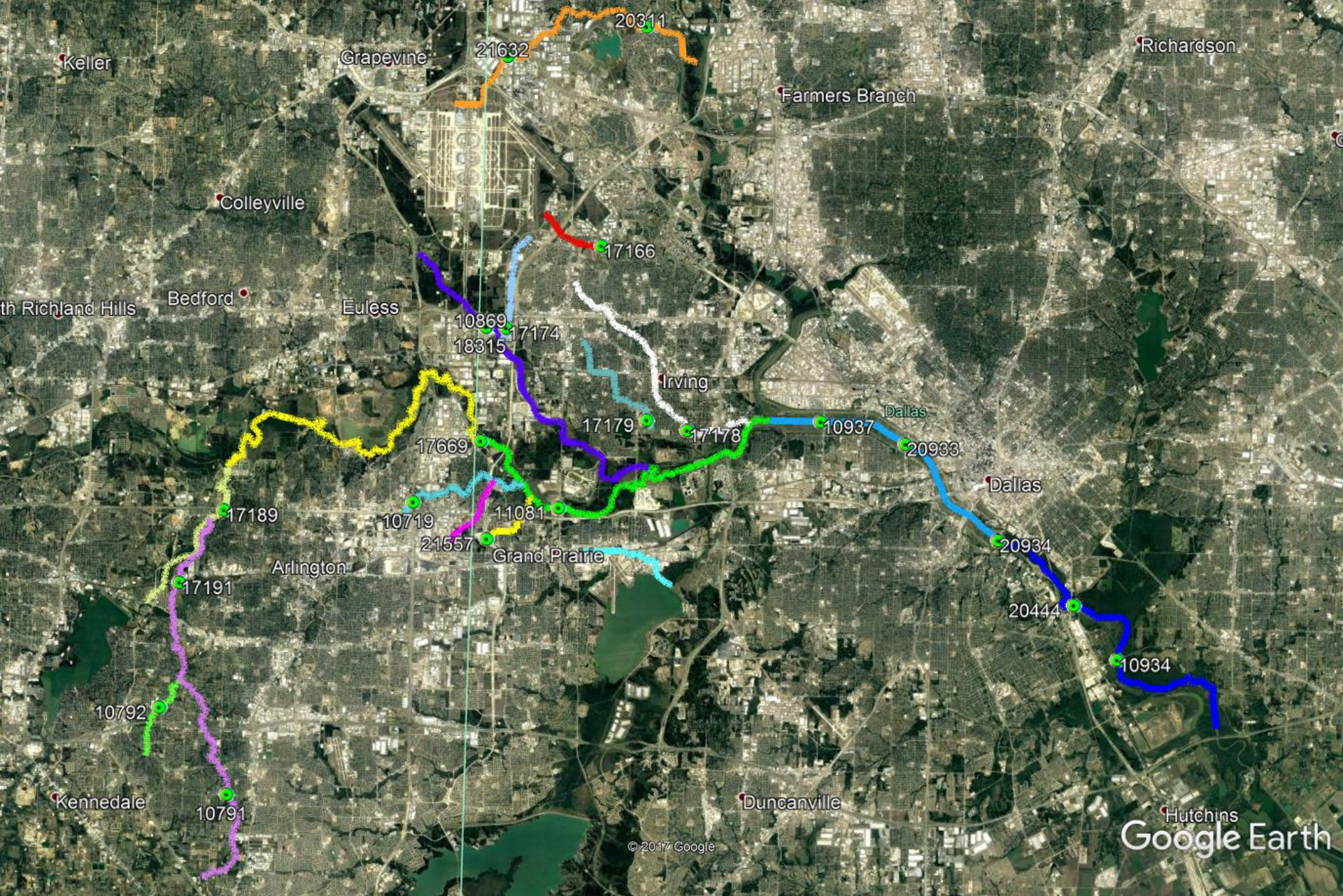
2014 26 sites 142 samples



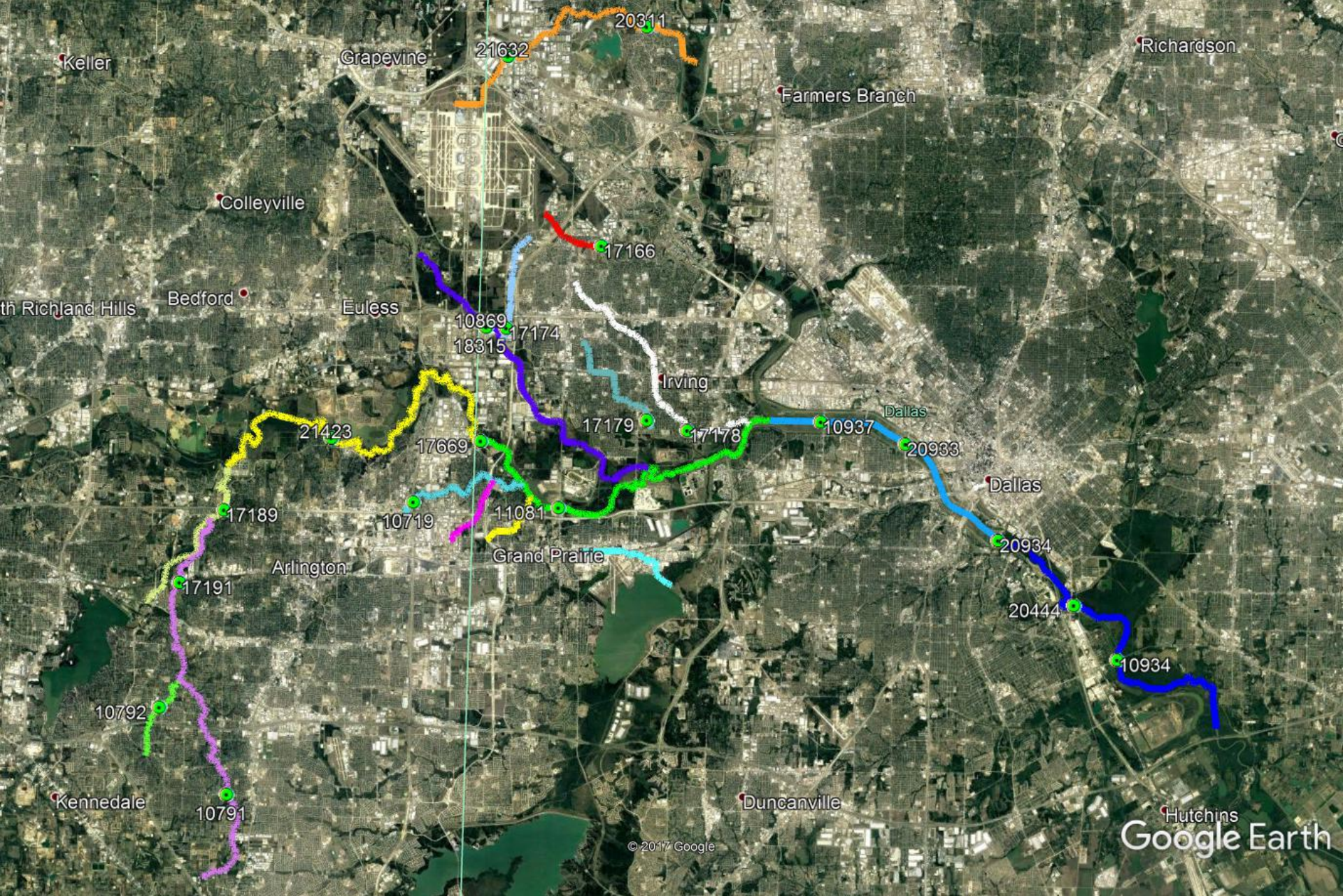
2015 **21 sites** **86 samples**



2016 **21 sites** **83 samples**



2017 21 sites



2018 21 sites

TCEQ Assessment Results

AU	AU Description	Integrated Report Year						
		2002	2004	2006	2008	2010	2012	2014
0805_03	TR between Cedar Creek and Fivemile Creek	NA	NS	NS	NS	NS	NS	NS
0805_04	TR between Elm Fork and Cedar Creek	NA	NS	NS	NS	NS	NS	NS
0822A_02	Cottonwood Branch from Story Road to Valley View Road	ND	ND	NS	NS	NS	NS	NS
0822B_01	Grapevine Creek	ND	ND	NS	NS	NS	NS	NS
0841_01	TR between Tarrant/Dallas county line and Elm Fork	NA	NS	NS	NS	NS	NS	NS
0841_02	TR between Village Creek and Tarrant/Dallas county line	NA	FS	FS	FS	FS	ND	NS
0841B_01	Bear Creek	ND	ND	NS	NS	NS	NS	FS
0841C_01	Arbor Creek	ND	ND	NS	NS	NS	NS	FS
0841E_01	Copart Branch Mountain Creek	ND	ND	NS	NS	NS	FS	FS
0841G_01	Dalworth Creek	ND	ND	NS	NS	NS	NS	NS
0841H_01	Delaware Creek	ND	ND	NS	NS	NS	NS	NS
0841J_01	Estelle Creek	ND	ND	NS	NS	NS	NS	NS
0841L_01	Johnson Creek	ND	ND	CN	FS	NS	NS	NS
0841M_01	Kee Branch	ND	ND	NS	NS	NS	NS	NS
0841R_01	Rush Creek	ND	ND	FS	FS	NS	NS	NS
0841T_01	Village Creek	ND	ND	FS	FS	NS	NS	NS
0841U_01	West Irving Creek	ND	ND	NS	NS	NS	NS	NS

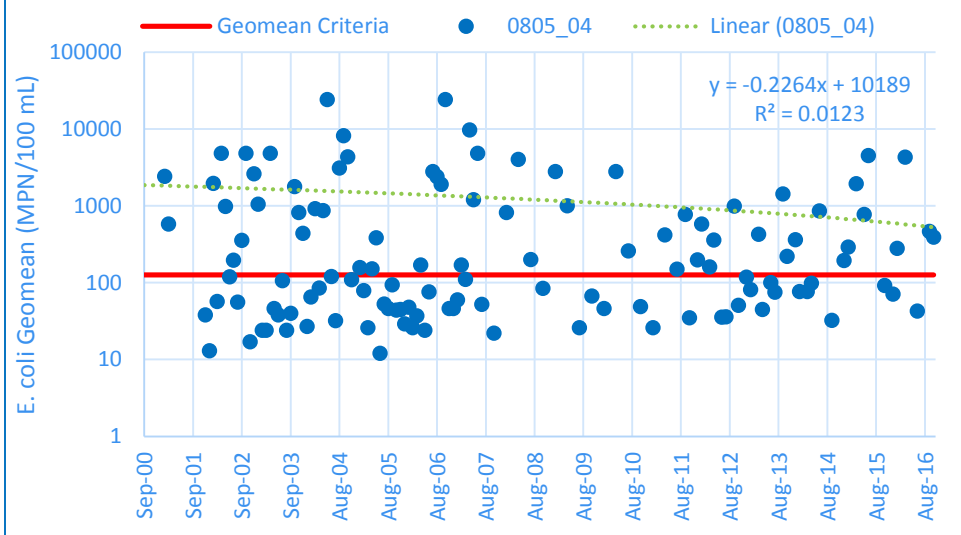
Data Summary

- Period of record in SWQMIS
 - 9/18/2000 to 11/16/2016
- All $</>$ values taken as the value
 - Did not take $\frac{1}{2}$ of less than values
- Grouped all data by assessment unit
- Calculated geomean for each month
 - Geomean contains 1 to 6 values

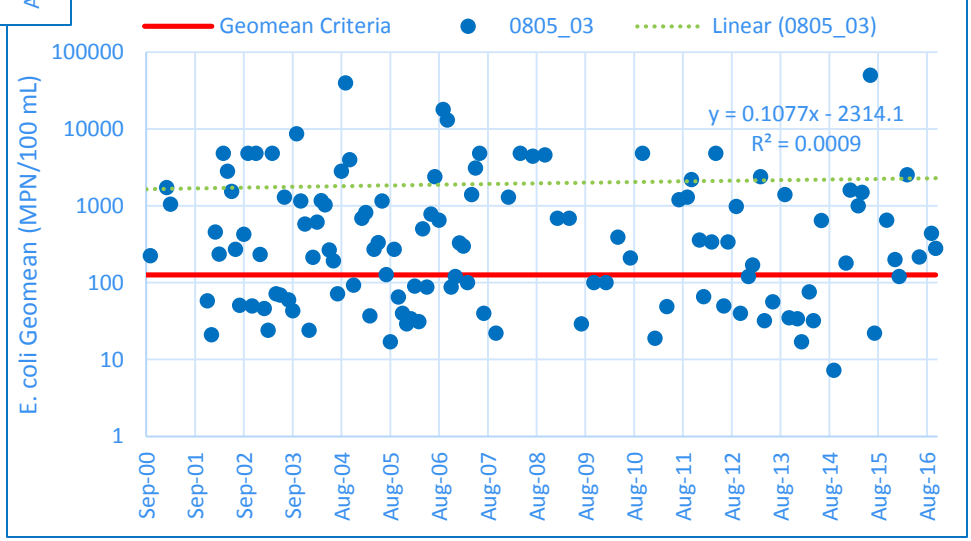


0805 - Upper Trinity River

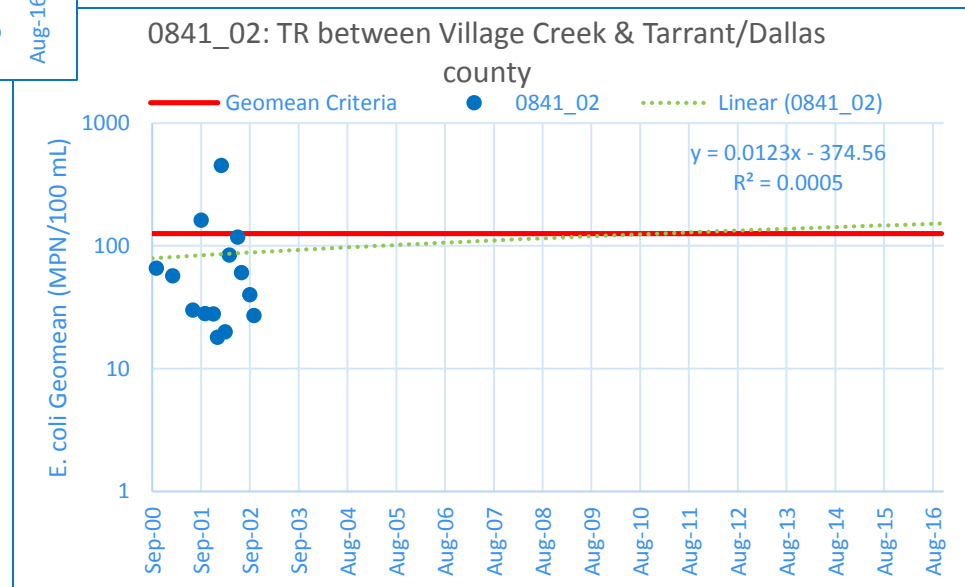
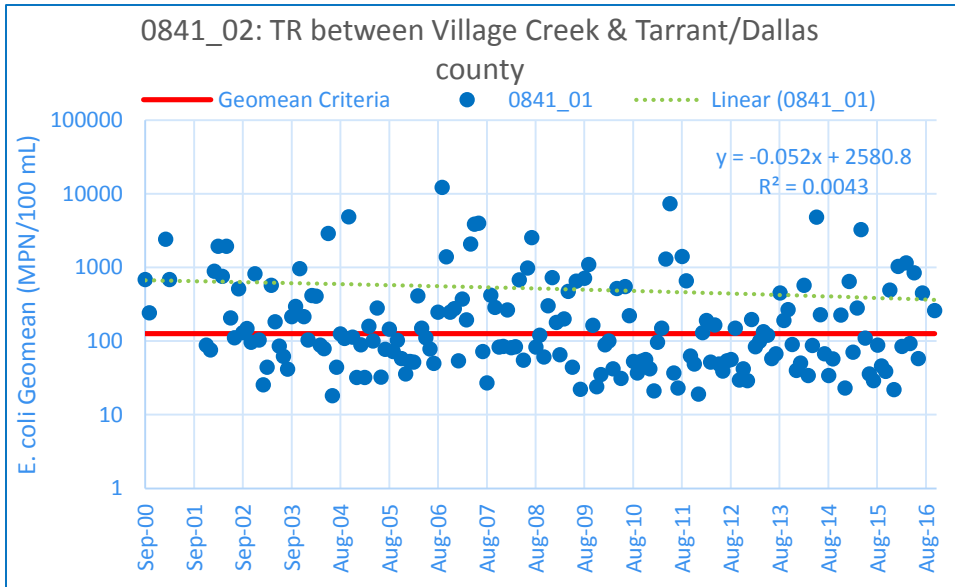
0805_04: TR between Elm Fork and Cedar Creek



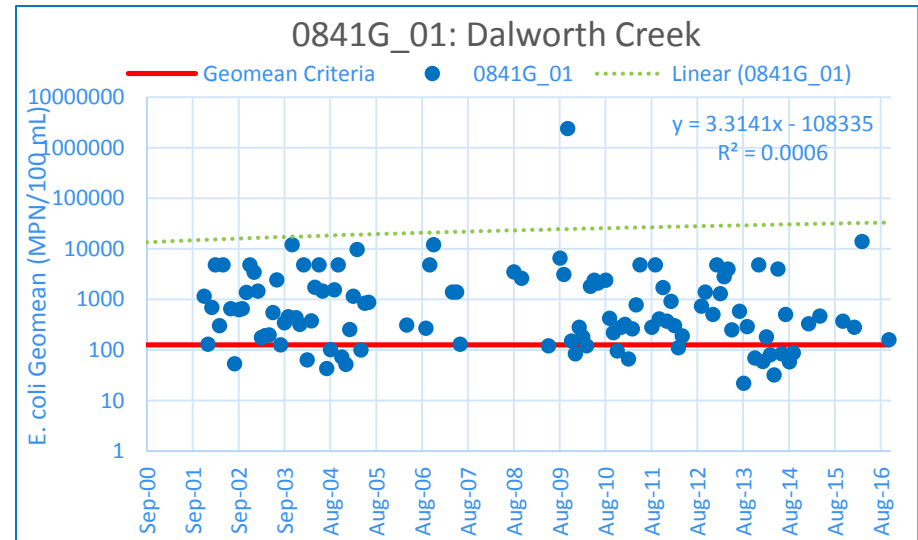
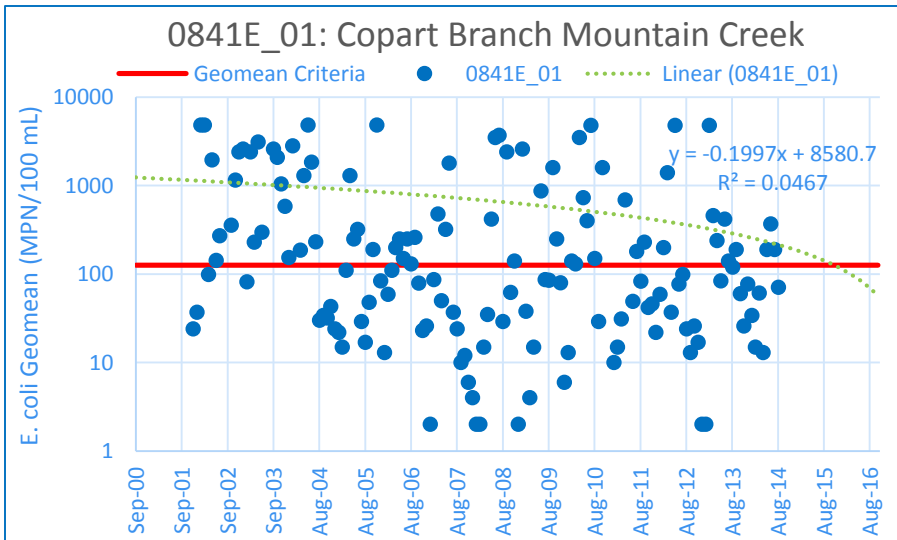
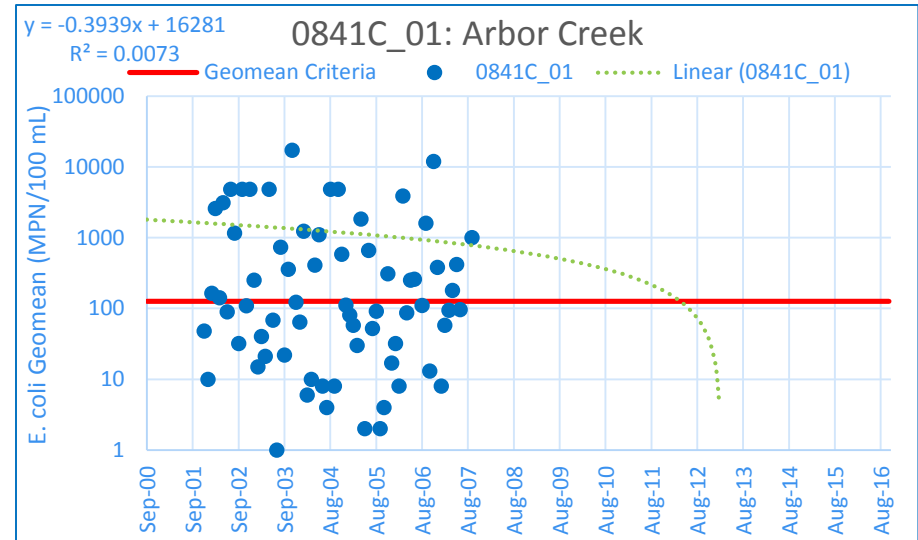
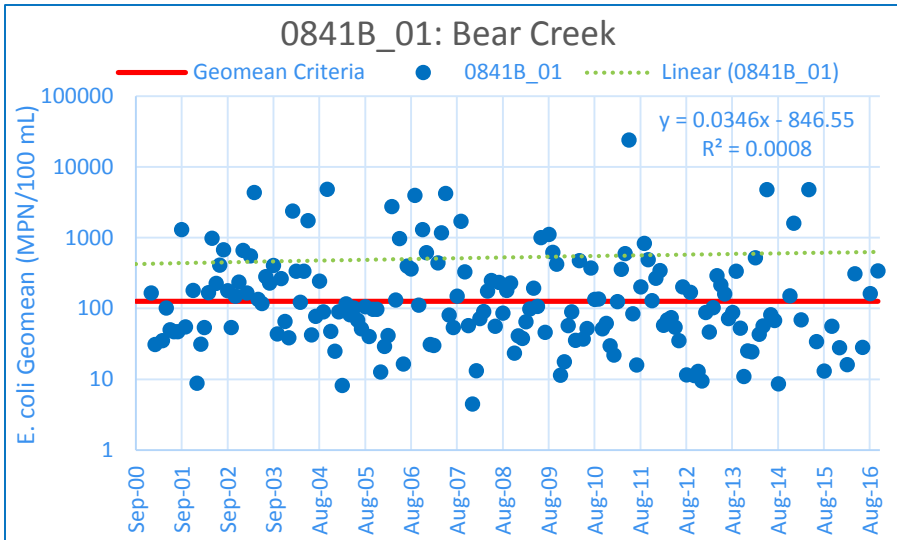
0805_03: TR between Cedar Creek and Fivemile Creek



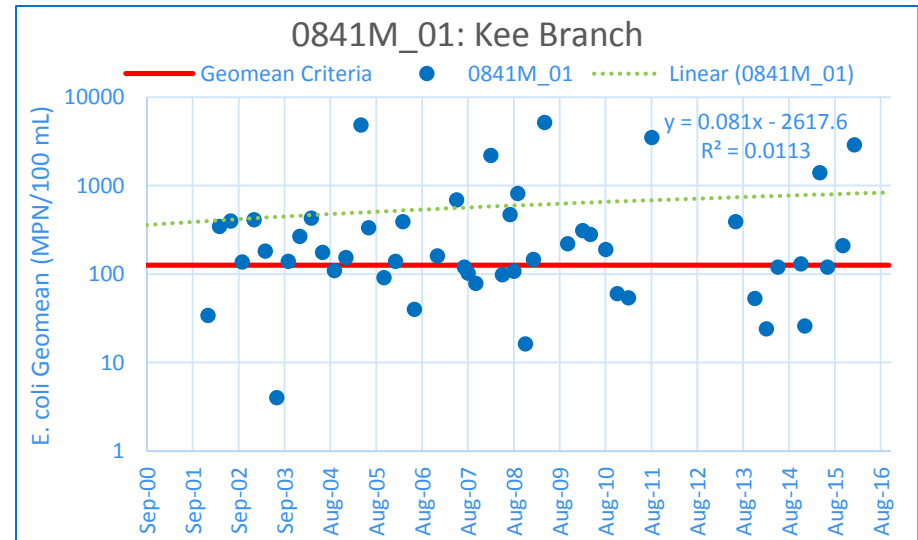
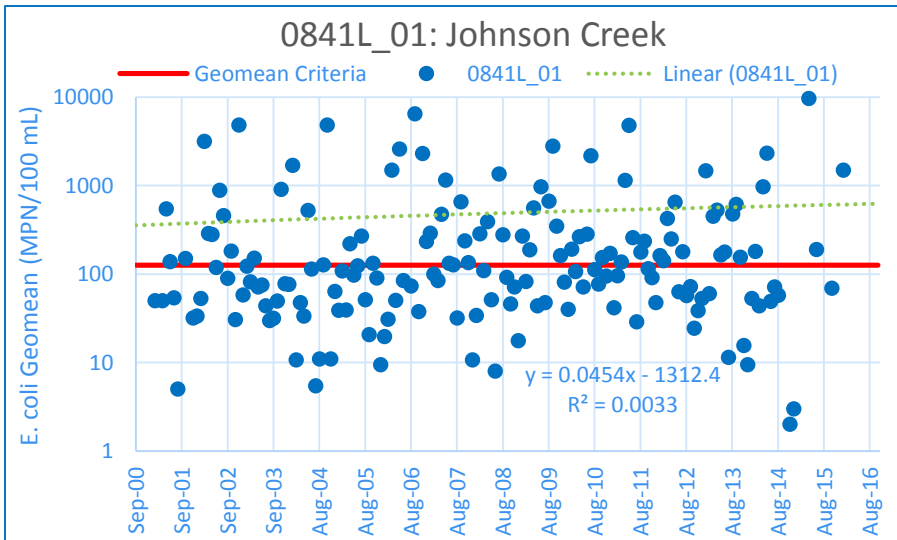
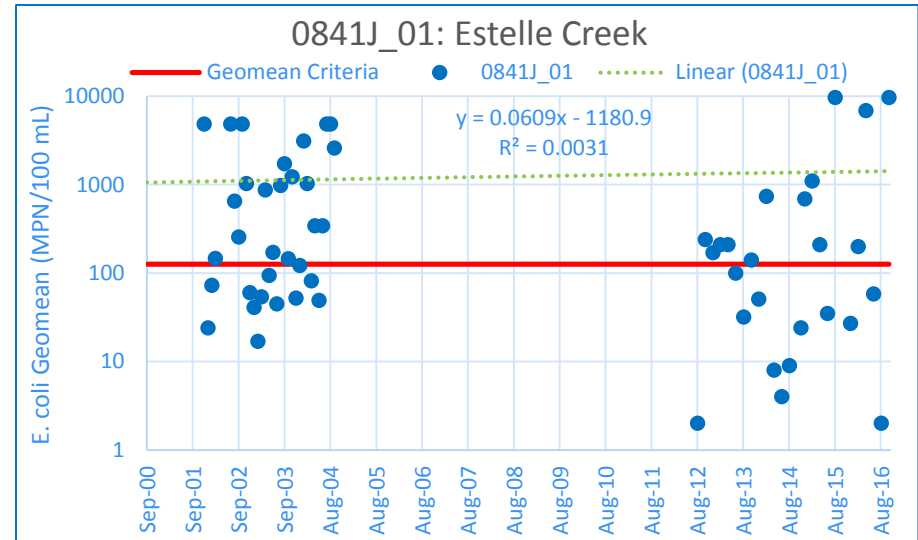
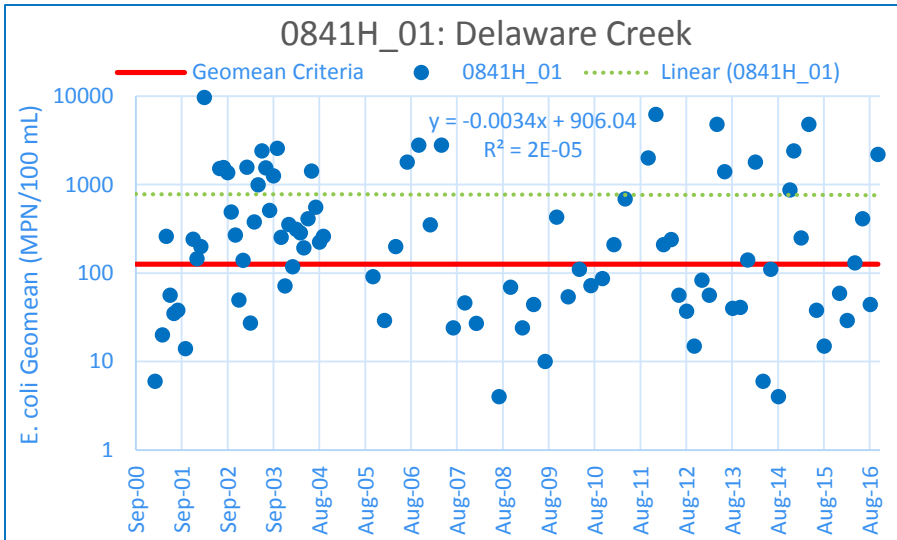
0841 – Lower West Fork Trinity River



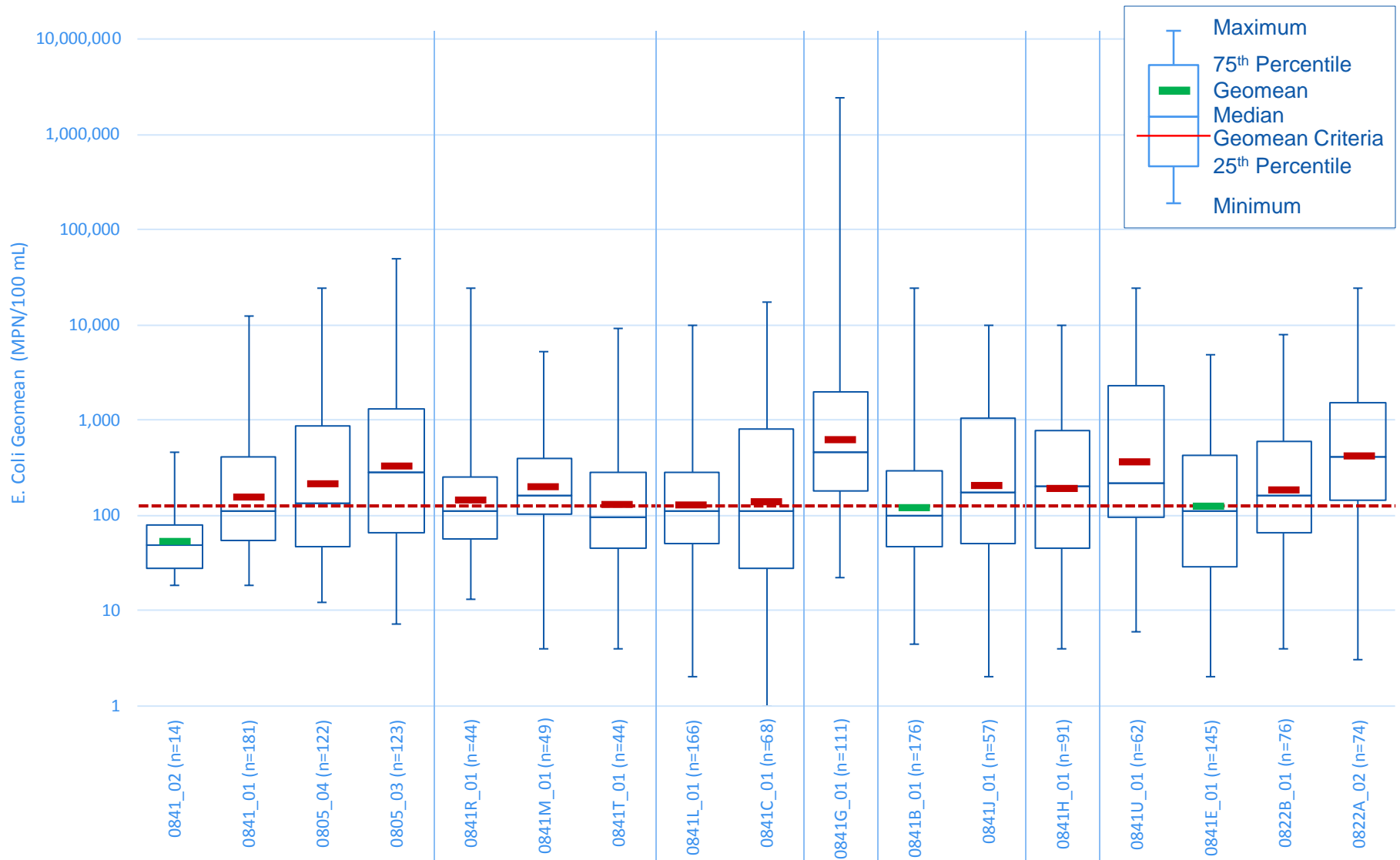
0841B – Bear Creek, 0841C – Arbor Creek, 0841E – Copart Branch Mountain Creek, 0841G – Dalworth Creek



0841H – Delaware Creek, 0841J – Estelle Creek, 0841L – Johnson Creek, 0841M – Kee Branch

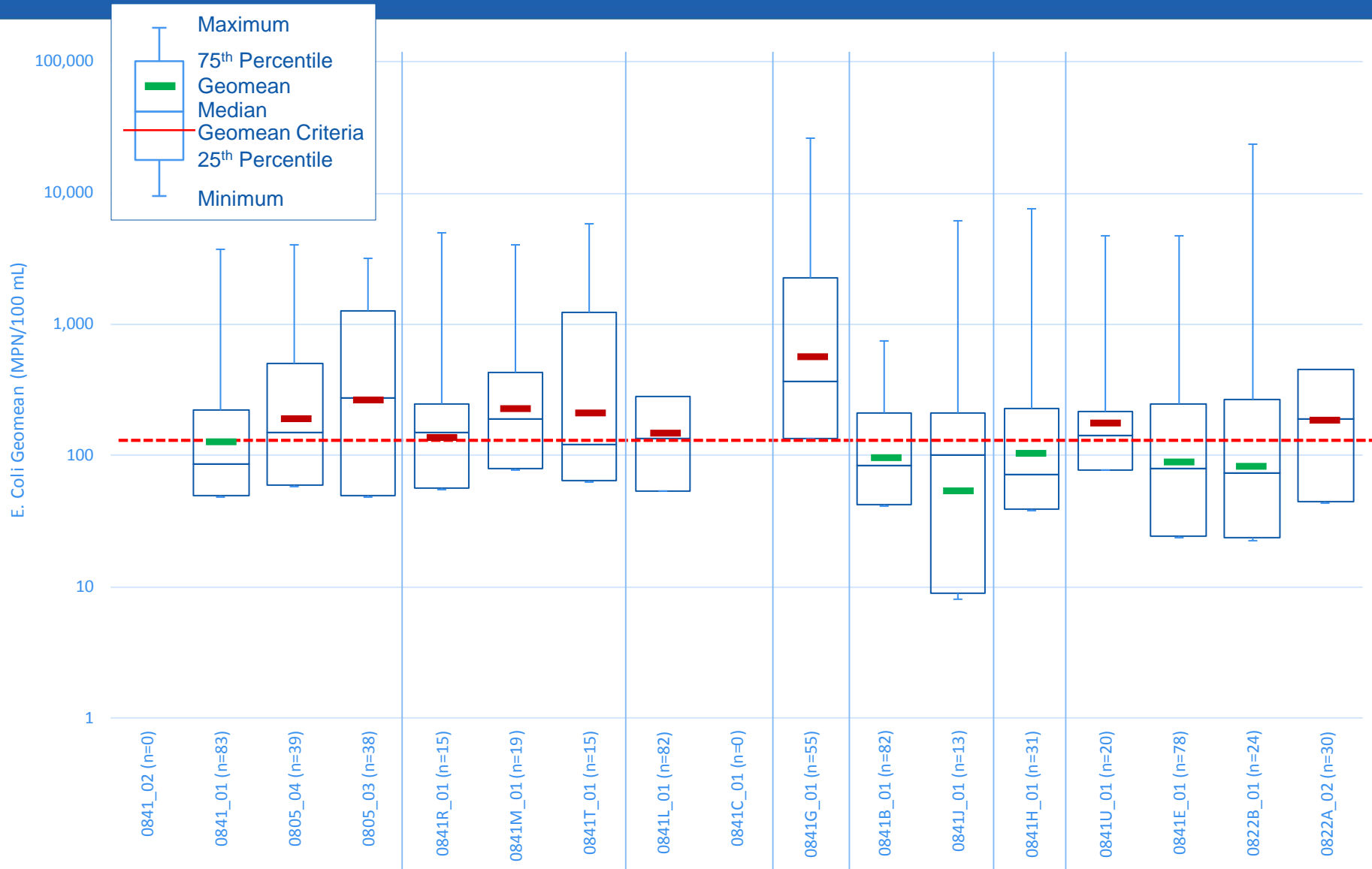


POR Box Plots



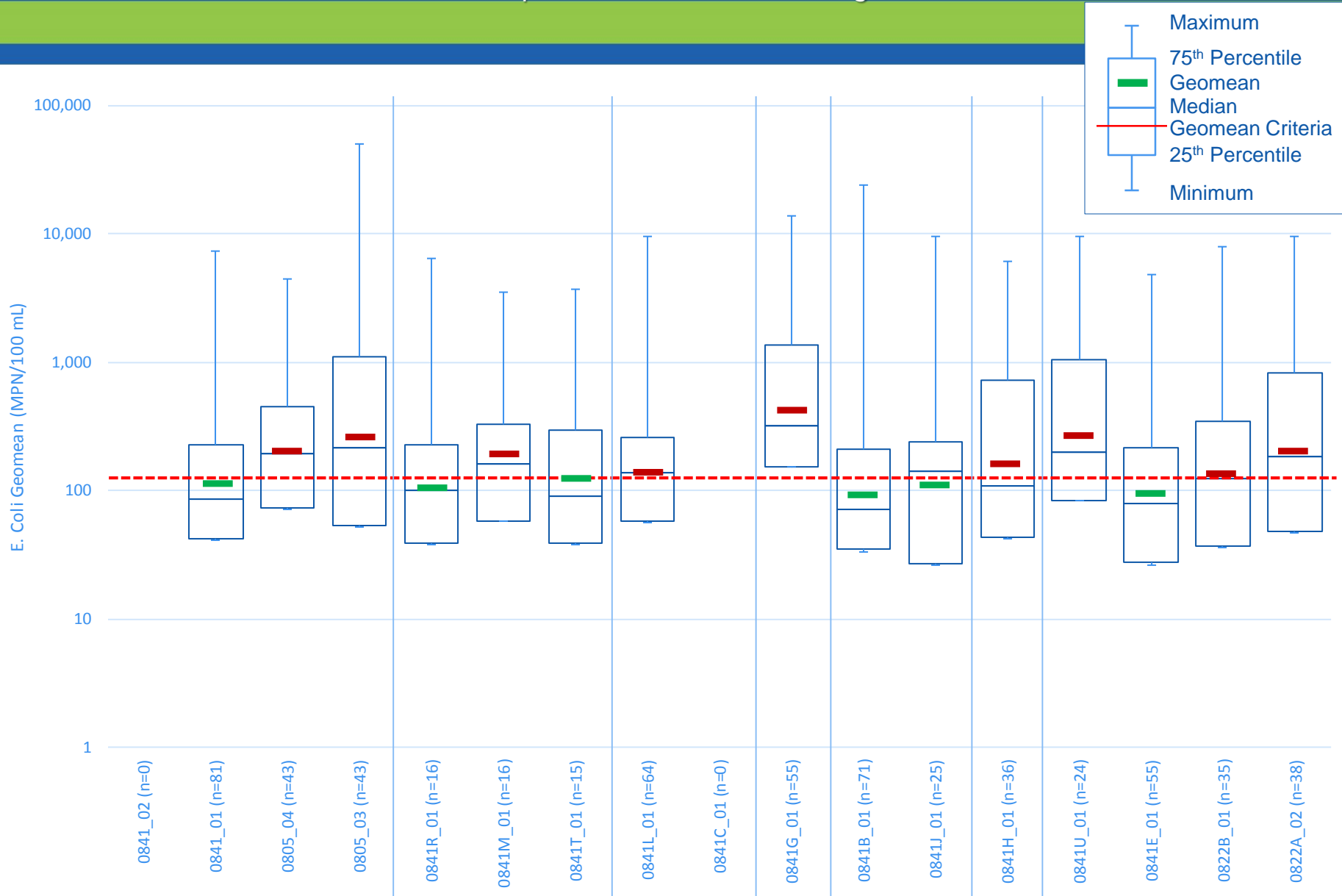
12/1/2007-11/30/2014 Box Plots

Corresponds to 2016 IR Date Range



12/1/2009-11/30/2016 Box Plots

Corresponds to 2018 IR Date Range



Questions?

