

Rail Station Fact Sheet – Lake June Station



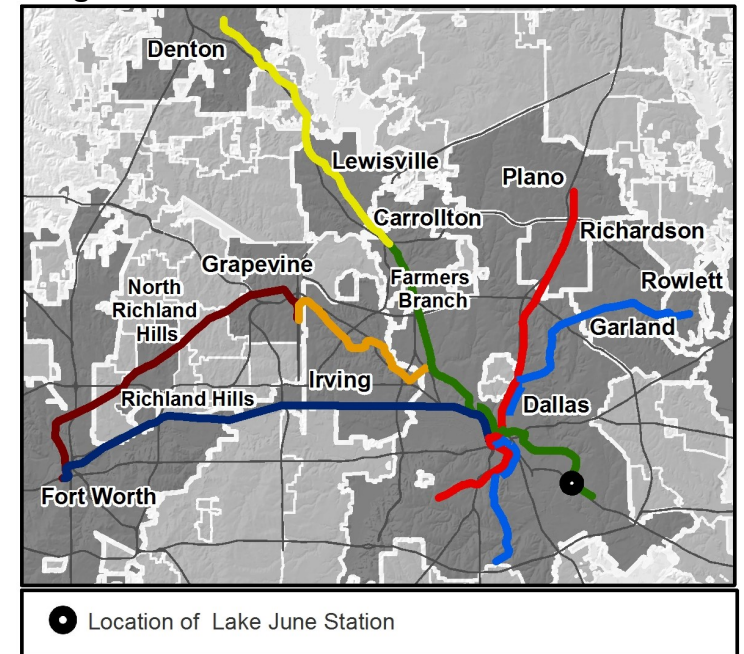
North Central Texas
Council of Governments



Station Overview

Lake June Station is located at Lake June Road and Gillette Street, east of Highway 175, near the Great Trinity Forest in Dallas. The station opened in 2010 and is served by the DART Rail Green Line.

Regional Rail Transit Lines



0.5 Mile Station Buffer Rail Lines	Rail Stations	Key Developments		
		Education	Multi-Family	Retail

Rail Station Fact Sheet – Lake June Station



Station Characteristics¹

Address	6410 Lake June Road
City	Dallas
Agency	Dallas Area Rapid Transit
Rail Line(s)	Green Line
Corridor	Southeast (SE)
Year Opened	2010
Park & Ride Spaces	434

Ridership¹

2015 Avg. Weekday	987
2015 Avg. Saturday	521
2015 Avg. Sunday	397

2014 On-Board Transit Survey: Access Mode to Station²

Bike	0.2%
Drive Alone	7.8%
Carpool	0.0%
Walk	22.9%
Drop Off	19.0%
Other	0.0%
Transit Transfer	50.1%

Station Area Plans and Studies

Title	
Publisher	
Year	
Web Location	

Station Area Characteristics (1/2 mile radius)

Demographics³

Total Population	10,600
Population Density (pop/sq. mile)	1,285
Average Median Age	30
Average Median Income	\$36,859.29

Housing³

Total Housing Units	2,921
Housing Density (units/sq. mile)	354
Percent Occupied	94%
Percent Owner-Occupied	66%
Percent Renter-Occupied	34%

Commute To Work³

Percent Automobile	92.5%
Percent Drive Alone	73.6%
Percent Carpool	18.9%
Percent Transit	3.8%
Percent Bike	0.2%
Percent Walk	0.0%
Percent Other	2.4%
Percent Work from Home	1.1%
Percent Zero-Vehicle Households	9.1%

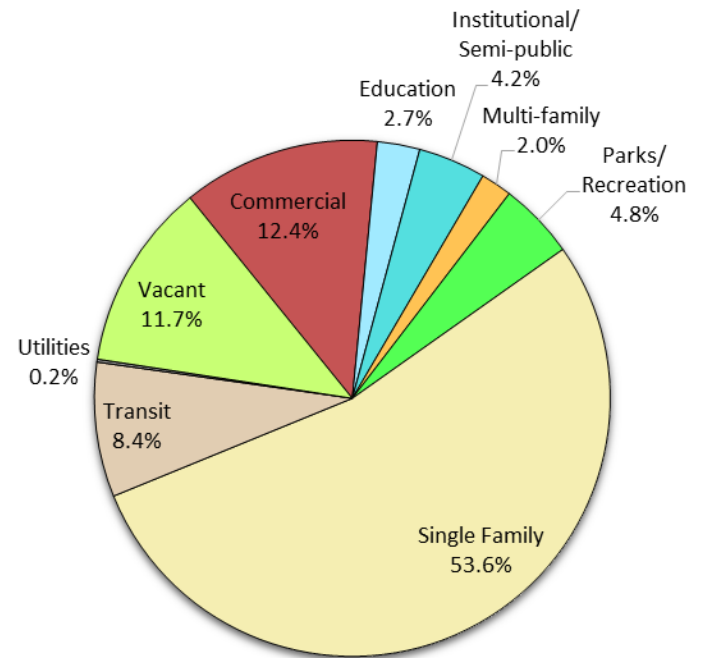
Traffic Survey Zone 2017 Employment Forecast²

Total Jobs	1,036
Job Density (jobs/sq. mile)	288

Land Use (2016) – Lake June Station



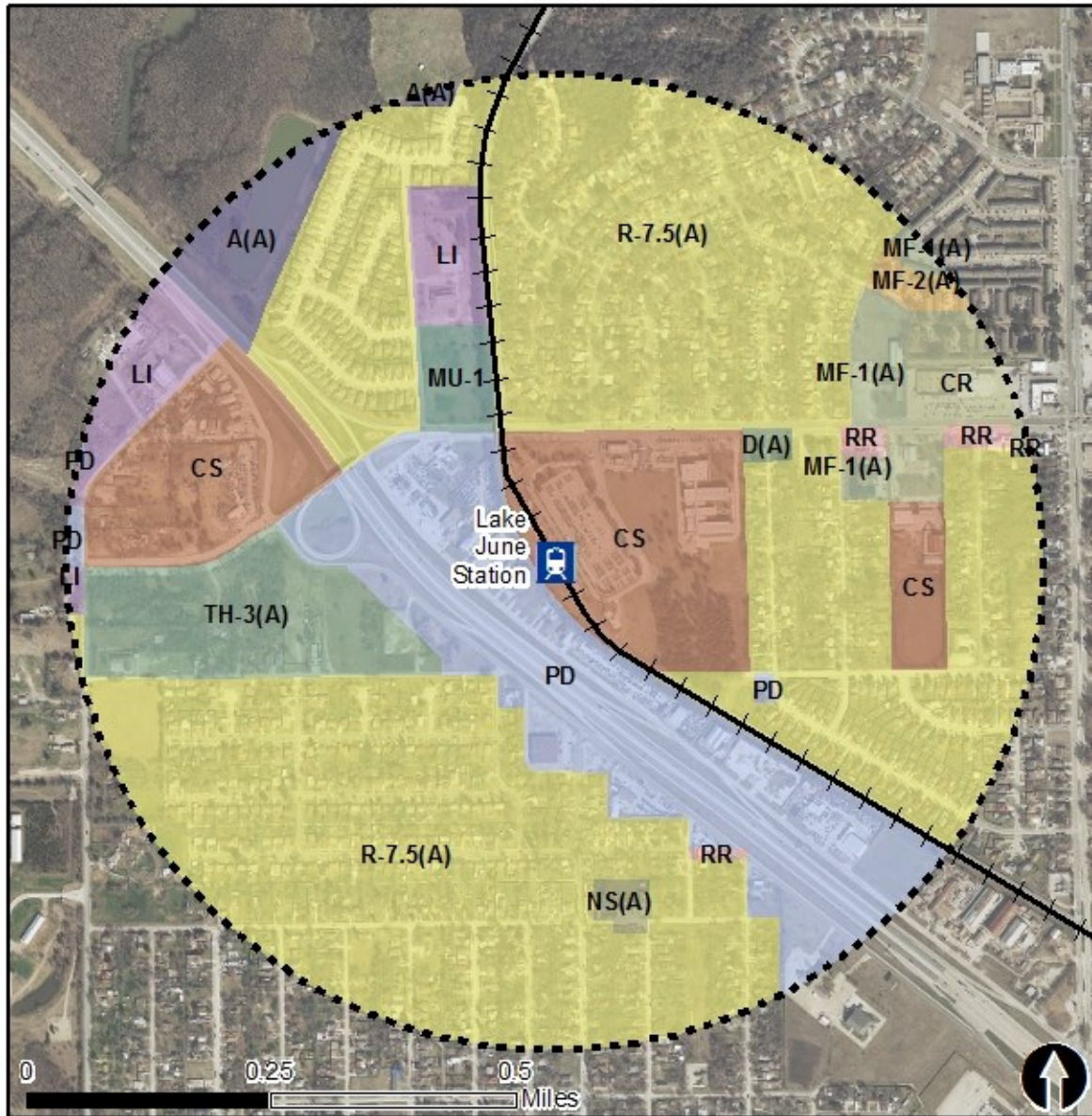
Land Use Percentages



0.5 Mile
Station Buffer

Rail Stations Rail Alignment

Zoning (2016) – Lake June Station

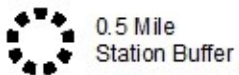


Zoning Districts

- A(A) – Agricultural
- CS – Commercial Service
- CR – Community Retail
- D – Duplex
- LI – Light Industrial
- NS(A) – Neighborhood Service
- MU-1 – Mixed-Use
- MF-1(A), MF-2(A) – Multi-family
- PD – Planned Development
- R-7.5(A) – Single Family
- RR – Regional Retail
- TH-3(A) – Townhouse

For more information on zoning, please visit the City of Dallas Zoning website at:

<http://gis.dallascityhall.com/zoningweb/>



Rail Stations + Rail Lines

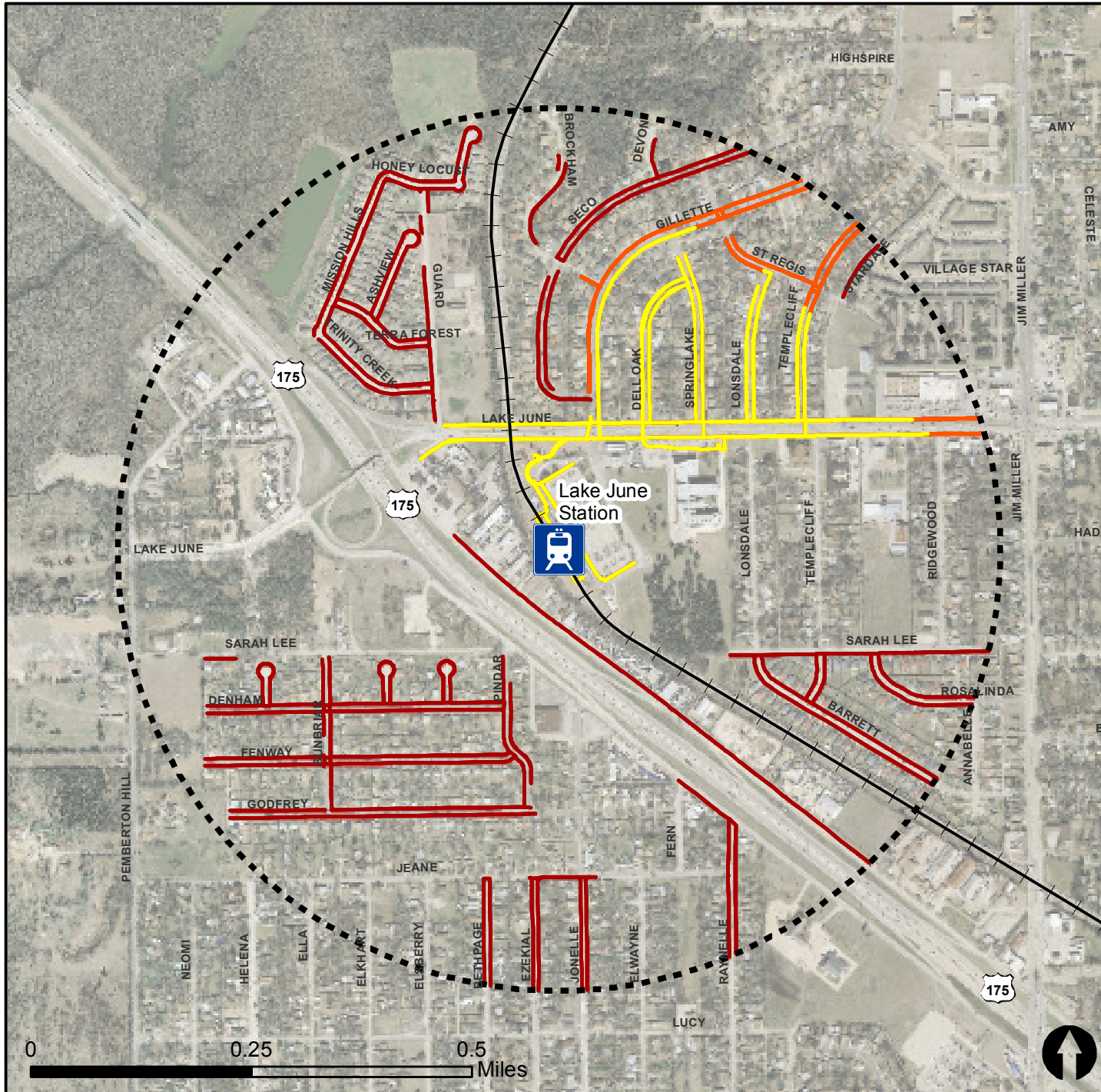


Pedestrian Routes to Rail - Lake June Station







Last Updated: February 2015



North Central Texas
Council of Governments



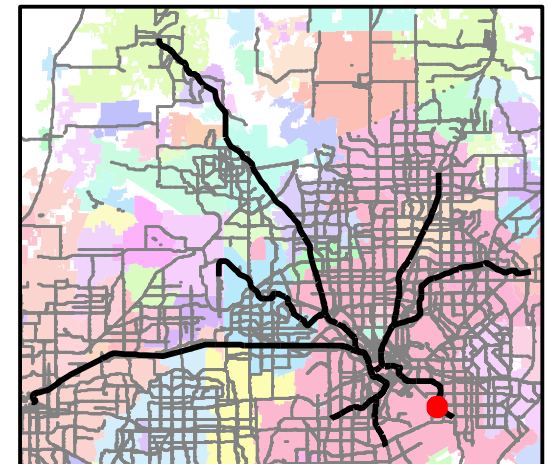
Legend

-  Rail Stations
-  0.5 Mile Station Buffer
-  Railroads
-  Existing sidewalk facilities within a 0.5 mile walk distance
-  Existing sidewalk facilities greater than a 0.5 mile walk distance
-  Existing sidewalk facilities that are disconnected due to a gap in the network

Project Overview

The Pedestrian Routes to Rail study identifies all existing pedestrian facilities within a half-mile radius of existing light rail and commuter rail stations in the Dallas-Fort Worth region based on 2014 data. ArcGIS Network Analyst tool was used to identify continuous facilities that are less than or greater than a half-mile actual walking distance to a station. The maps also reflect existing facilities that are disconnected due to gaps or other barriers not allowing a continuous pedestrian route to a station. The maps do not reflect the condition or ADA compliance of the existing infrastructure. More information on the Routes to Rail study and methodology is available at:

nctcog.org/RoutesToRail

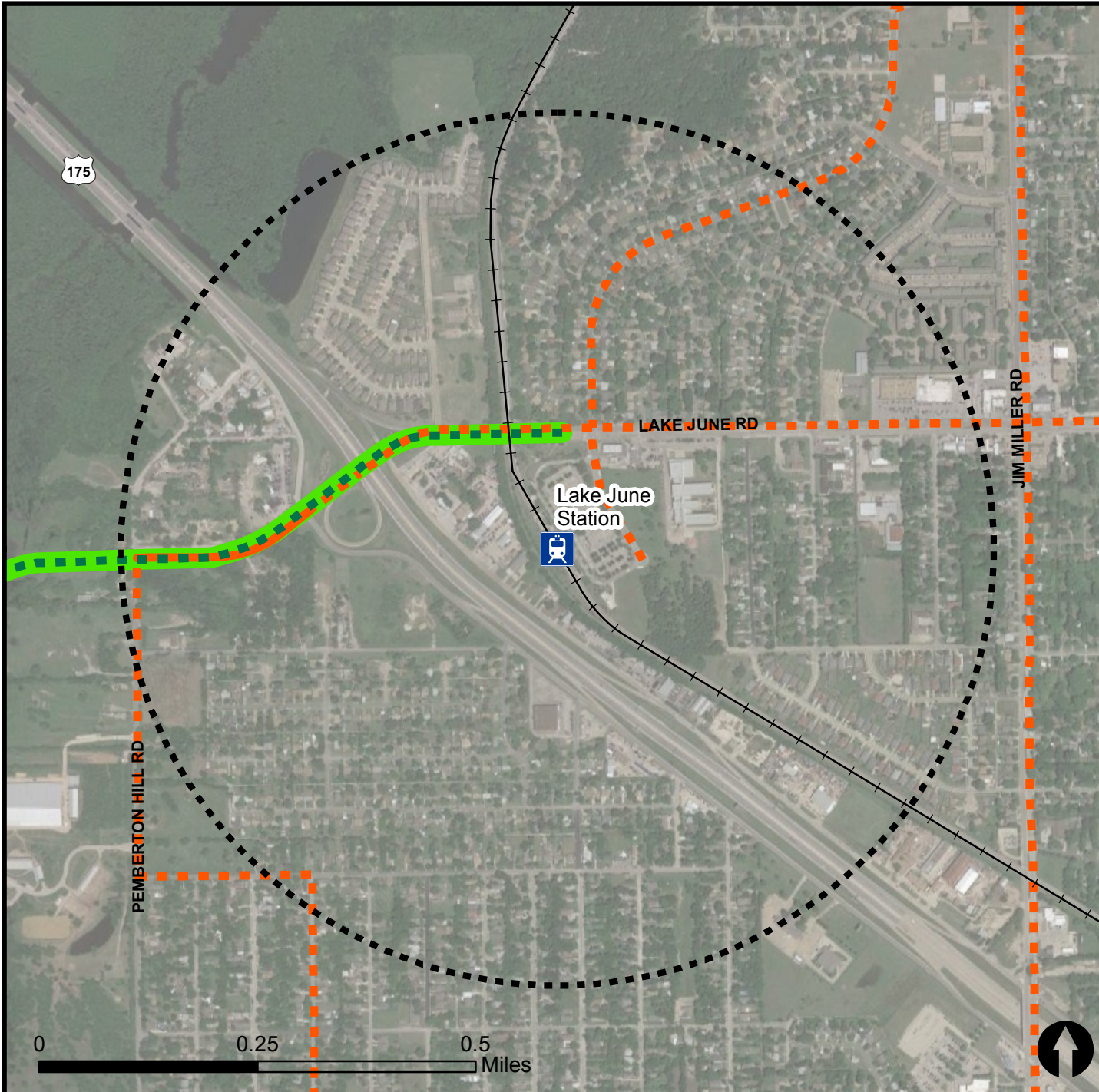


Bicycle Routes to Rail - Lake June Station

Last Updated: October 2016



North Central Texas
Council of Governments



Legend



Rail Stations



0.5 Mile
Station Buffer



Rail Lines



On-Street Bikeway, Existing



On-Street Bikeway, Planned



2040 Veloweb



Off-Street Path, Existing



Off-Street Path, Planned

Project Overview

The Bicycle Routes to Rail study identifies all existing and planned bikeways in proximity to existing or under-construction light rail and commuter rail stations in the Dallas / Fort Worth region based on 2016 data. The maps reflect off-street paths (trails) and streets designated by local adopted master plans for dedicated bikeways (e.g. bike lanes, cycle tracks) located on the street. In accordance with the Texas Transportation Code, bicyclists have a right to the road. As such, the map does not reflect other roadways around the station that may have signed bike routes or by state law may be used by bicyclists. More information about the Routes to Rail study and methodology is available at:

nctcog.org/RoutesToRail

