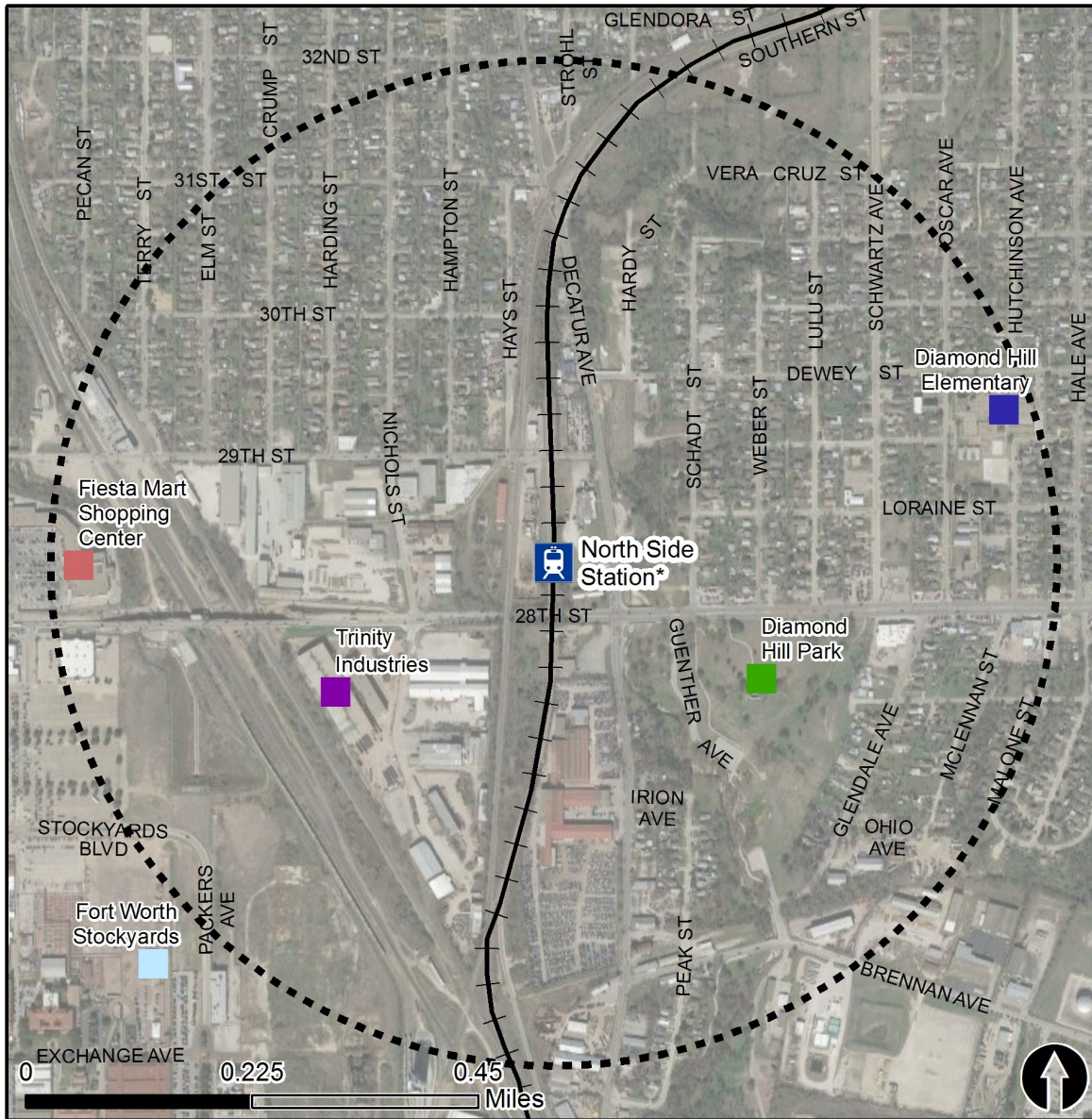


Rail Station Fact Sheet – North Side Station*

(*station under construction with anticipated start of service in late 2018)



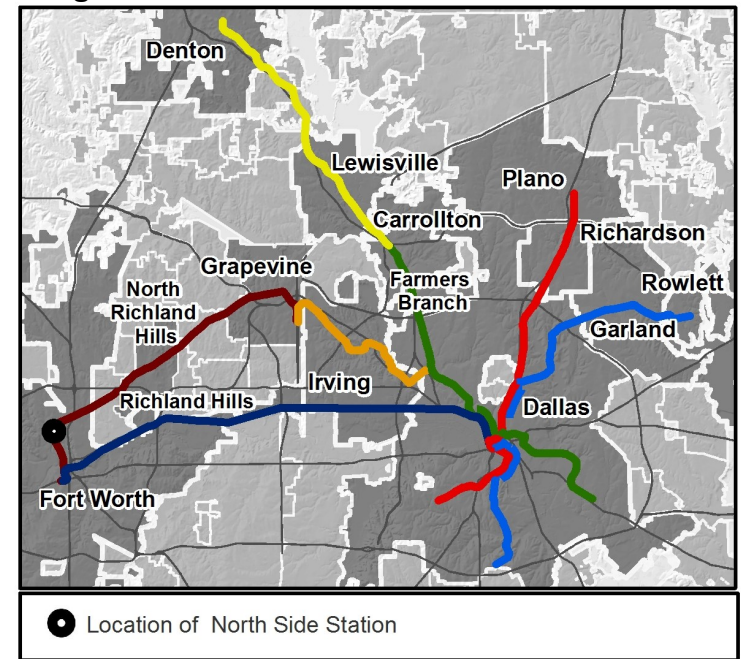
North Central Texas
Council of Governments



Station Overview

North Side Station will be located near the intersection of North East 28th Street and Decatur Avenue in Fort Worth. The station's anticipated opening will be in late 2018 as part of TEX Rail service from Downtown Fort Worth to DFW International Airport Terminal B.

Regional Rail Transit Lines



0.5 Mile
Station Buffer

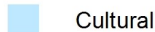


Rail Stations

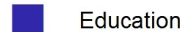


Rail Lines

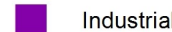
Key Developments



Cultural



Education



Industrial



Recreation



Retail

Rail Station Fact Sheet – North Side Station*

(*station under construction with anticipated start of service in late 2018)



North Central Texas
Council of Governments

Station Characteristics¹

Address	2901 Decatur Avenue
City	Fort Worth
Agency	Fort Worth Transportation Authority
Rail Line(s)	TEX Rail
Corridor	TEX Rail
Year Opened	2018
Park & Ride Spaces	125

Ridership¹

2015 Avg. Weekday	N/A
2015 Avg. Saturday	N/A
2015 Avg. Sunday	N/A

2014 On-Board Transit Survey: Access Mode to Station²

Bike	N/A
Drive Alone	N/A
Carpool	N/A
Walk	N/A
Drop Off	N/A
Other	N/A
Transit Transfer	N/A

Station Area Plans and Studies

Title
Publisher
Year
Web Location

Station Area Characteristics (1/2 mile radius)

Demographics³

Total Population	8,006
Population Density (pop/sq. mile)	3,063
Average Median Age	28
Average Median Income	\$35,762.60

Housing³

Total Housing Units	2,277
Housing Density (units/sq. mile)	871
Percent Occupied	89%
Percent Owner-Occupied	60%
Percent Renter-Occupied	40%

Commute To Work³

Percent Automobile	97.2%
Percent Drive Alone	76.4%
Percent Carpool	20.8%
Percent Transit	0.3%
Percent Bike	0.0%
Percent Walk	0.3%
Percent Other	2.0%
Percent Work from Home	0.3%
Percent Zero-Vehicle Households	8.0%

Traffic Survey Zone 2017 Employment Forecast²

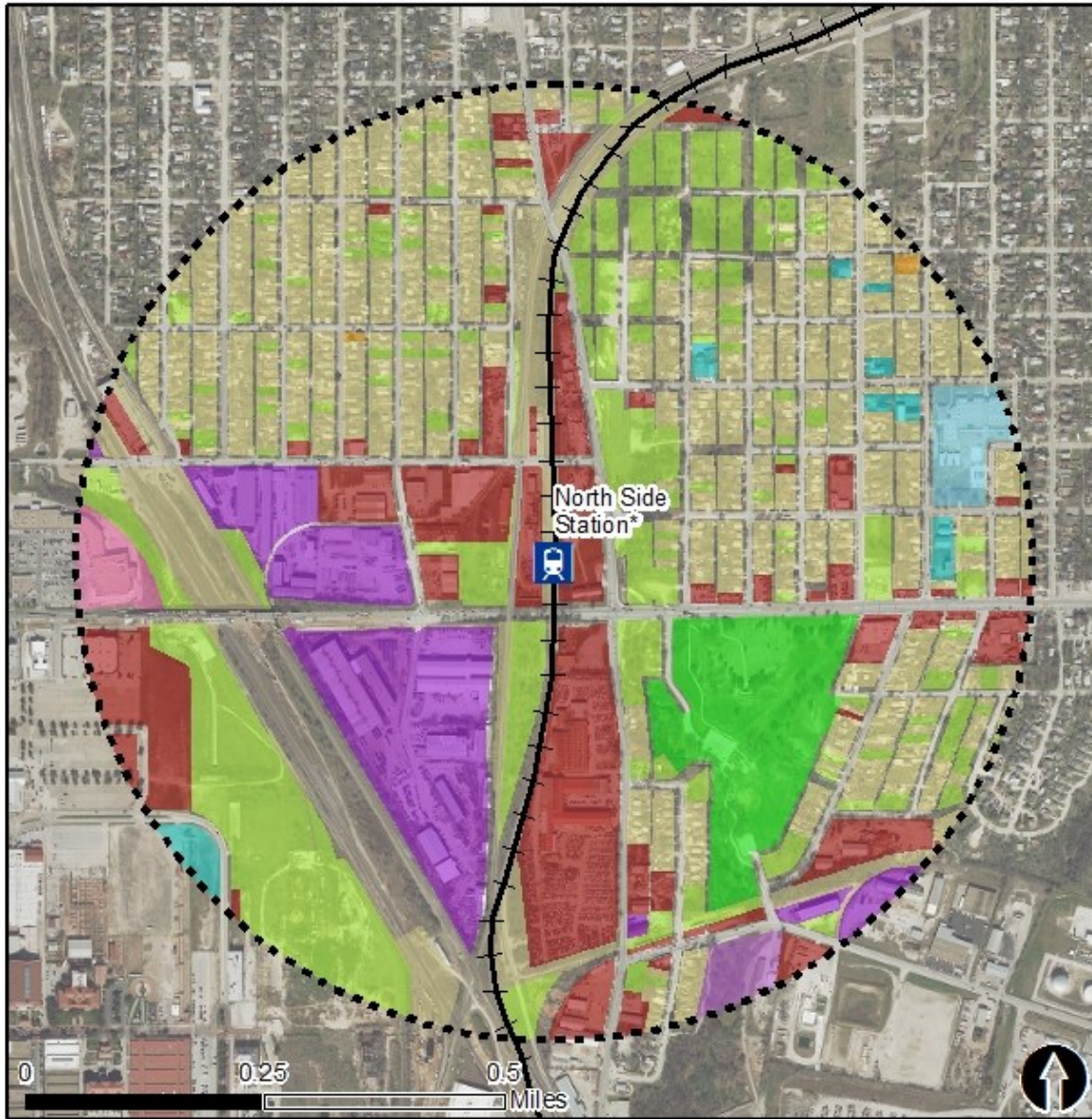
Total Jobs	3,785
Job Density (jobs/sq. mile)	1,510

Land Use (2016) – North Side Station*

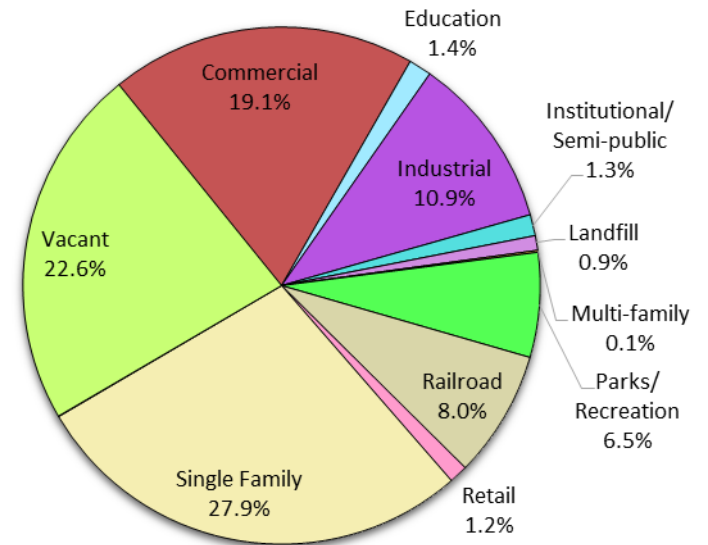
(*station under construction with anticipated start of service in late 2018)



North Central Texas
Council of Governments



Land Use Percentages



0.5 Mile
Station Buffer



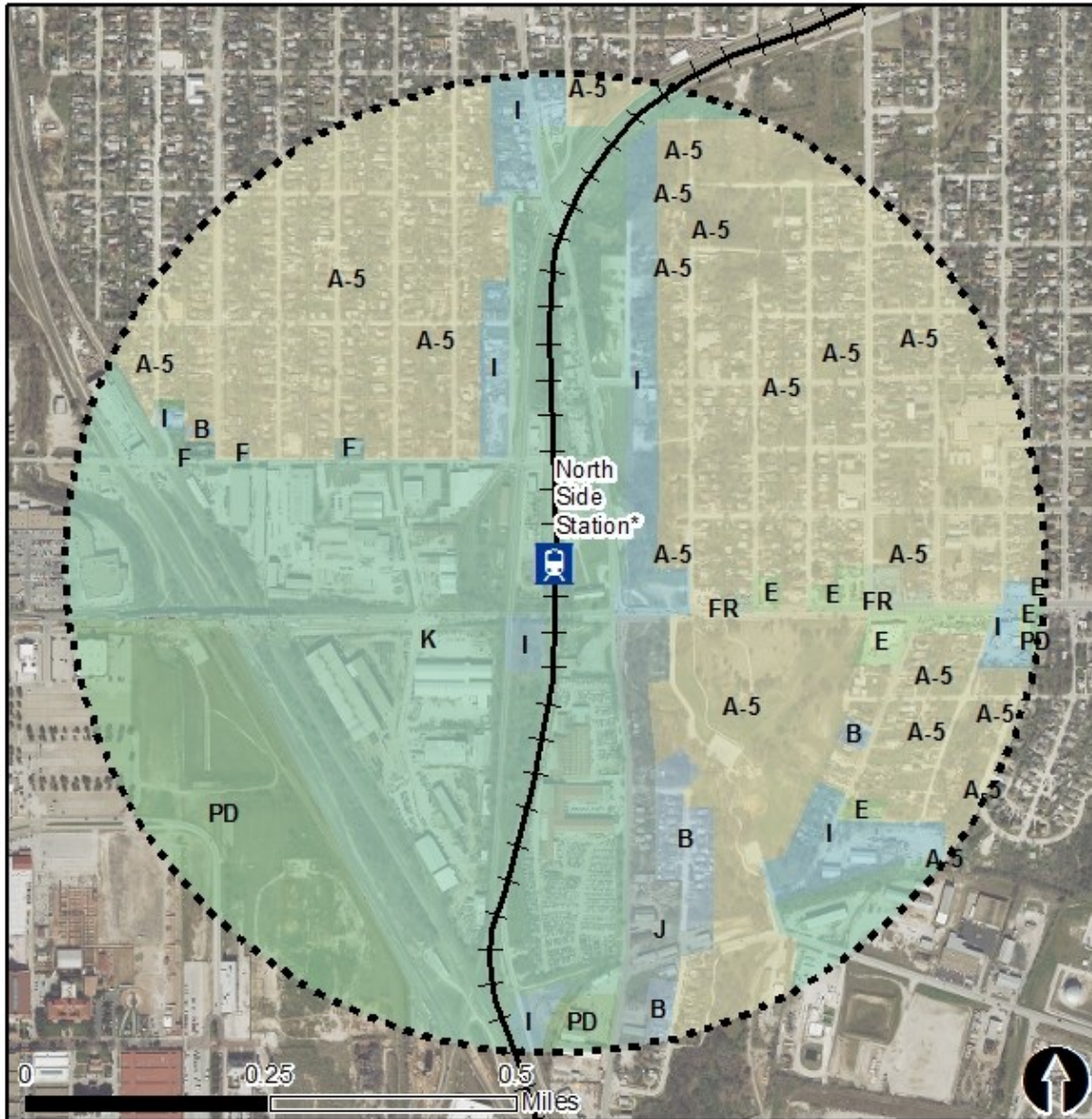
Rail Stations + + Rail Alignment

Zoning (2016) – North Side Station*

(*station under construction with anticipated start of service in late 2018)



North Central Texas
Council of Governments



Zoning Districts

- A-5 – One-Family Residential
- B – Two-Family Residential
- E – Neighborhood Commercial
- ER – General Commercial Restricted
- F – General Commercial
- FR – General Commercial Restricted
- G – Intensive Commercial
- I – Light Industrial
- J – Medium Industrial
- K – Heavy Industrial
- PD – Planned Development

For more information on Fort Worth zoning, please visit: <http://fortworthtexas.gov/planninganddevelopment/zoninginfo.aspx>



0.5 Mile
Station Buffer



Rail Stations



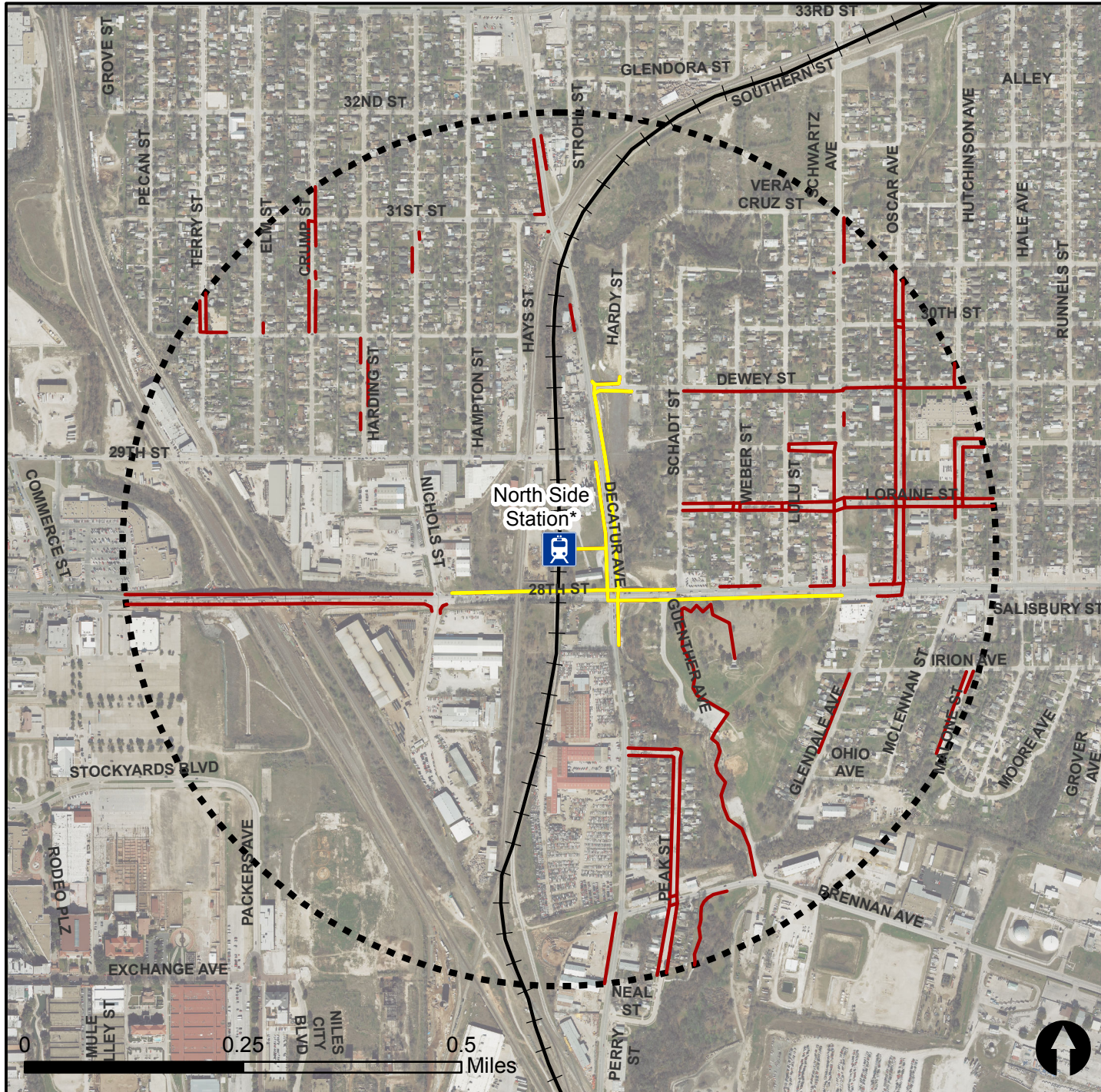
Rail Lines

Pedestrian Routes to Rail - North Side Station*

Last Updated: October 2016 (*Station under construction with anticipated start of service in late 2018)



North Central Texas
Council of Governments

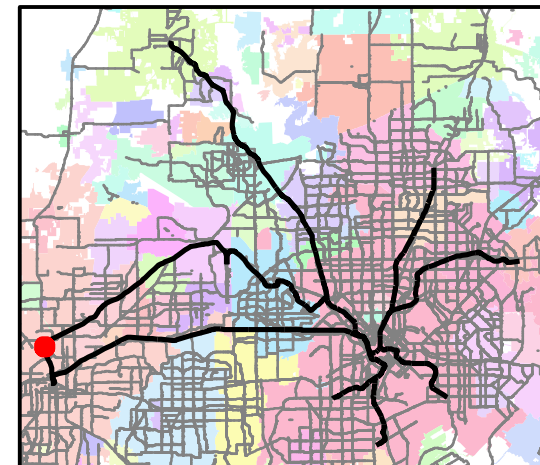


Legend

- Rail Stations
- 0.5 Mile Station Buffer
- Railroads
- Existing sidewalk facilities within a 0.5 mile walk distance (*platform connections constructed with station)
- Existing sidewalk facilities greater than a 0.5 mile walk distance
- Existing sidewalk facilities that disconnected due to a gap in the network

Project Overview

The Pedestrian Routes to Rail study identifies all existing pedestrian facilities within a half-mile radius of existing light rail and commuter rail stations in the Dallas-Fort Worth region based on 2014 data. ArcGIS Network Analyst tool was used to identify continuous facilities that are less than or greater than a half-mile actual walking distance to a station. The maps also reflect existing facilities that are disconnected due to gaps or other barriers not allowing a continuous pedestrian route to a station. The maps do not reflect the condition or ADA compliance of the existing infrastructure. More information on the Routes to Rail study and methodology is available at: nctcog.org/RoutesToRail

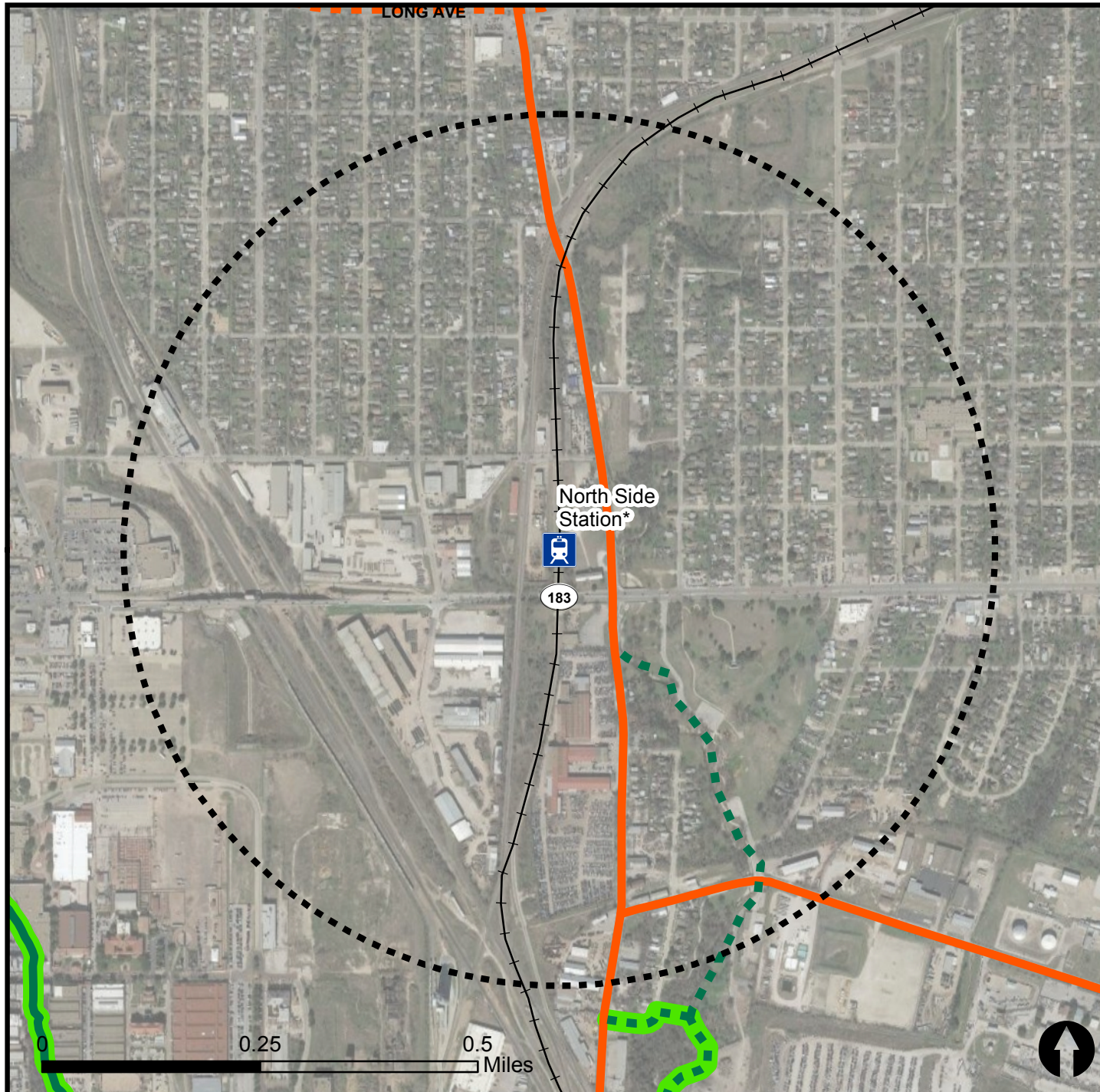


Bicycle Routes to Rail - North Side Station

Last Updated: October 2016



North Central Texas
Council of Governments



Legend



Rail Stations



0.5 Mile
Station Buffer



Rail Lines



On-Street Bikeway, Existing



On-Street Bikeway, Planned



2040 Veloweb



Off-Street Path, Existing



Off-Street Path, Planned

Project Overview

The Bicycle Routes to Rail study identifies all existing and planned bikeways in proximity to existing or under-construction light rail and commuter rail stations in the Dallas / Fort Worth region based on 2016 data. The maps reflect off-street paths (trails) and streets designated by local adopted master plans for dedicated bikeways (e.g. bike lanes, cycle tracks) located on the street. In accordance with the Texas Transportation Code, bicyclists have a right to the road. As such, the map does not reflect other roadways around the station that may have signed bike routes or by state law may be used by bicyclists. More information about the Routes to Rail study and methodology is available at:

nctcog.org/RoutesToRail

