

WATERSHED PRIORITY STRATEGY

A New Approach to Address Impaired
Water Bodies

303(D) VISION

- Developed in 2011 by the State and EPA
- A strategy to improve on the TMDL approach to addressing impairments
- Provides the opportunity to use different methods to address impairments
- Will be built into the National Water Program Guidance

303(D) VISION

- **“Prioritization”** Review, systematically prioritize, and report priority watersheds or waters for restoration and protection
- **“Assessment”** Identify the extent of healthy and CWA Section 303(d) impaired waters in each State’s priority watersheds or waters through site-specific assessments
- **“Protection”** Identify protection planning priorities and approaches along with schedules to help prevent impairments in healthy waters
- **“Alternatives”** Use alternative approaches, in addition to TMDLs, that incorporate adaptive **“Engagement”** Actively engage the public and other stakeholders to improve and protect water quality
- **“Engagement”** Engage the public and other stakeholders to improve and protect water quality
- **“Integration”** Identify and coordinate implementation of key point source and nonpoint source control actions that foster effective integration across all applicable State programs, Federal departments and agencies

NEW PERFORMANCE MEASURE

WQ27

- Based on the 303(d) VISION
- Developed by the States and EPA 2013
- Replaces the current, number of TMDLs per year, measure
- A 7 year effort
- 2016 to 2022
- The goal is approved plans for impairments

NEW PERFORMANCE MEASURE

- 4 Elements
 - Priority Waters
 - Universe
 - Baseline
 - Targets
- Performance Measure starts 2016
- The goals will be set for 2016 - 2022

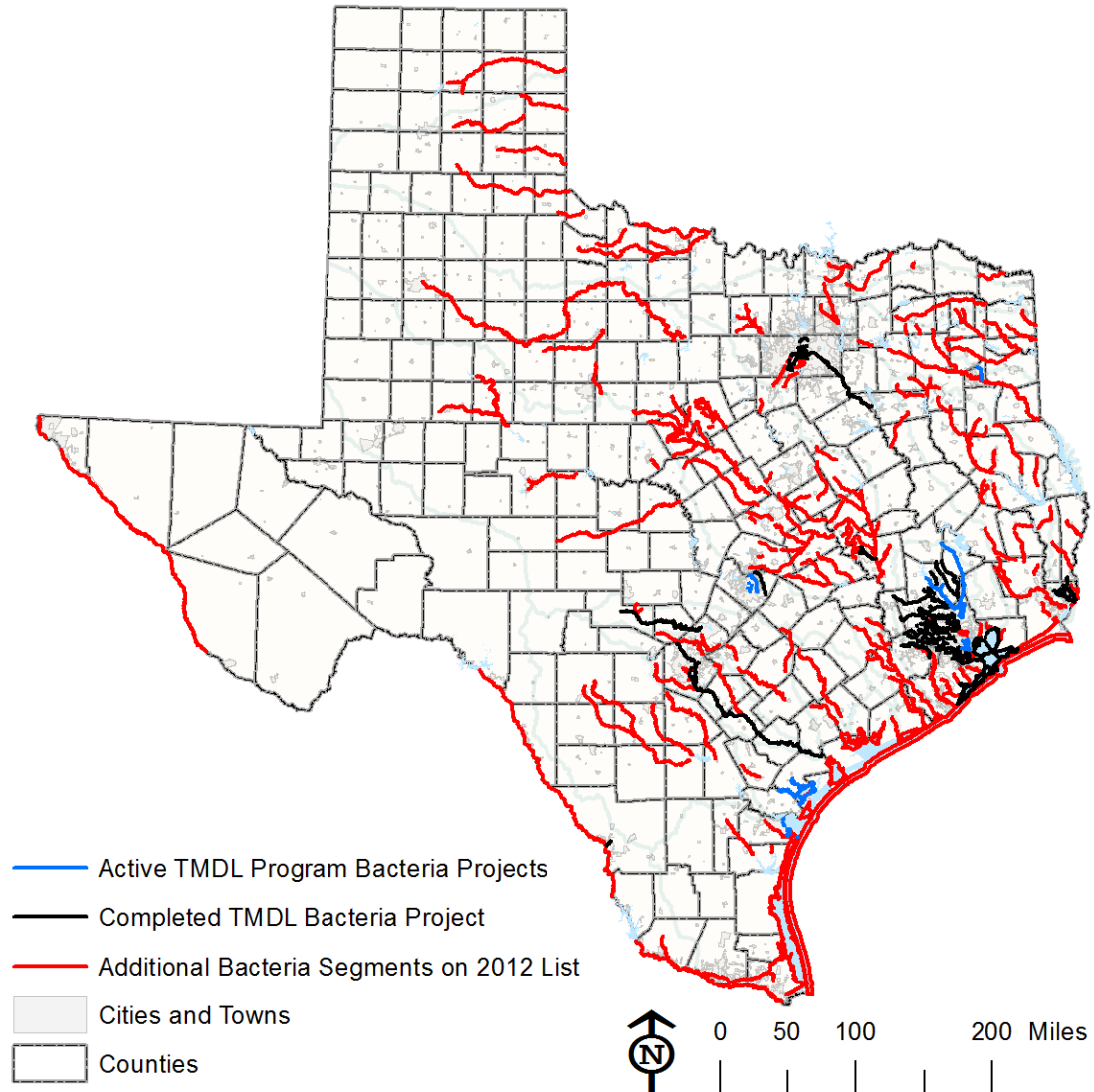
PRIORITY Waters

- Contact Recreation Use Impairments
- Greater than 45% of the 2012 303(d) list impaired segments
- Every River Basin in the State has at least one contact recreation impairment
- This is a long term focus and it does not mean that all the Priority Waters need to be completed within a specific time frame
- The short term commitment is defined in the Targets

UNIVERSE

- The total acreage of the priority waters

Bacteria Listings and Projects



BASELINE

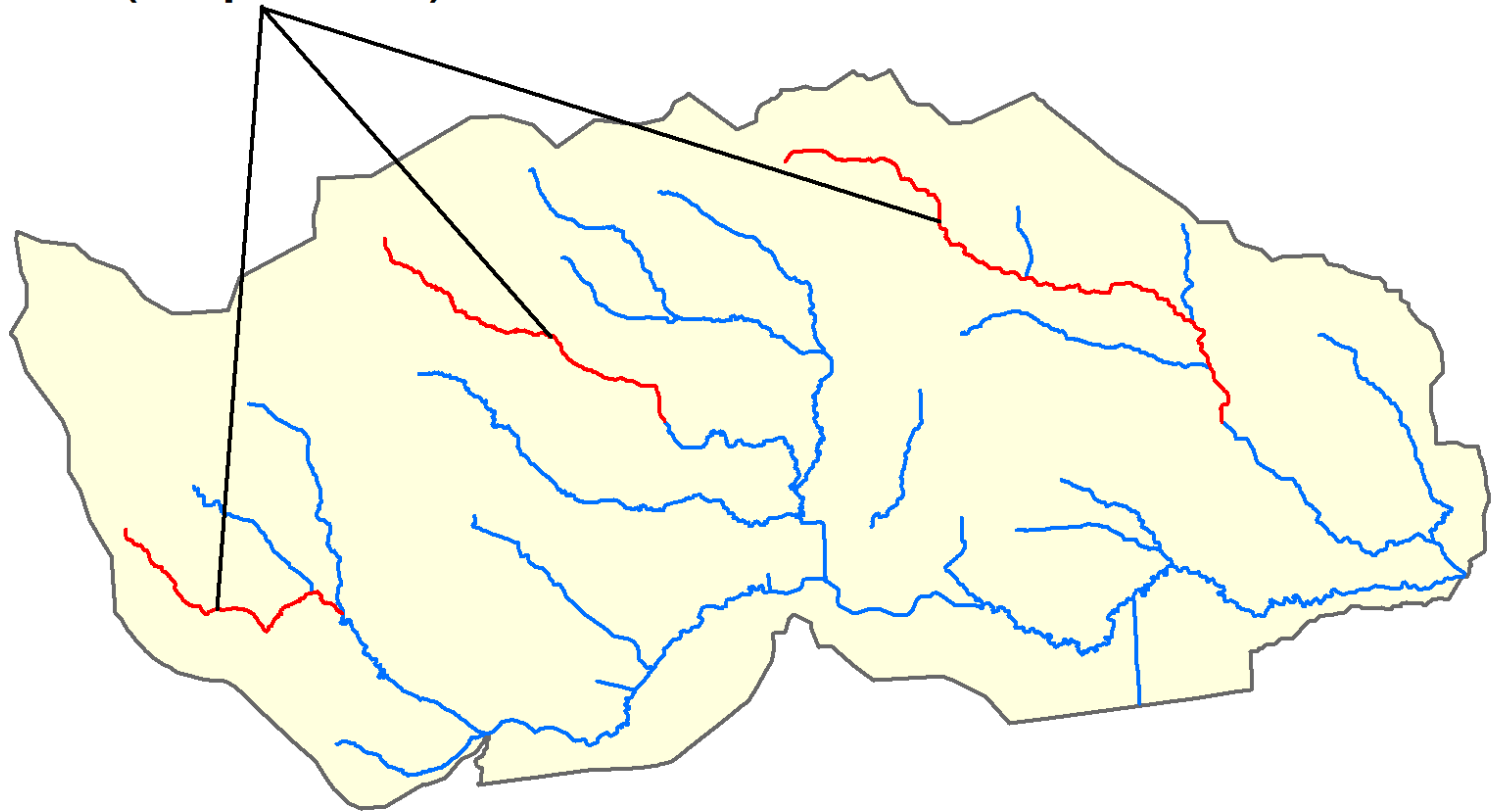
- The Baseline is the percentage of the Universe that has an approved plan in place
- Approved plans include
 - TCEQ adopted and EPA approved TMDL with TCEQ approved Implementation Plan
 - EPA approved Watershed Protection Plan

TARGETS

- The extent of areas within the Universe projected to have a TMDL or alternative restoration or protection plan per year by 2022
- States identify annual commitments in each fiscal year to work toward the 2022 target
 - The commitments to watershed based plans will be small in the initial years because of the initial work needed for outreach and education so stakeholders can make an informed decision on the approach to be used in their watershed

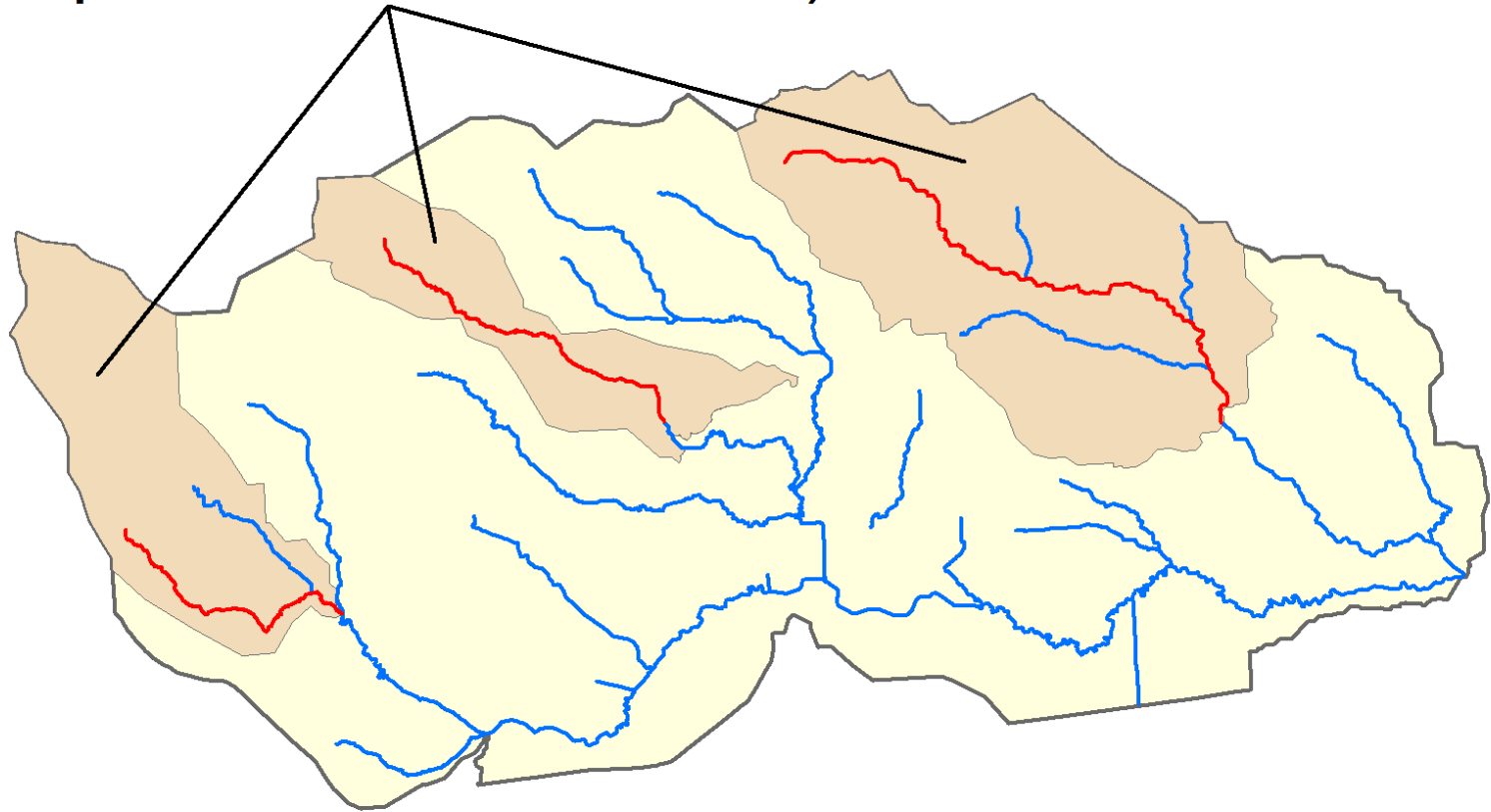
Example – Priority Waters

Priority Waters
(Impaired)



Example – Universe

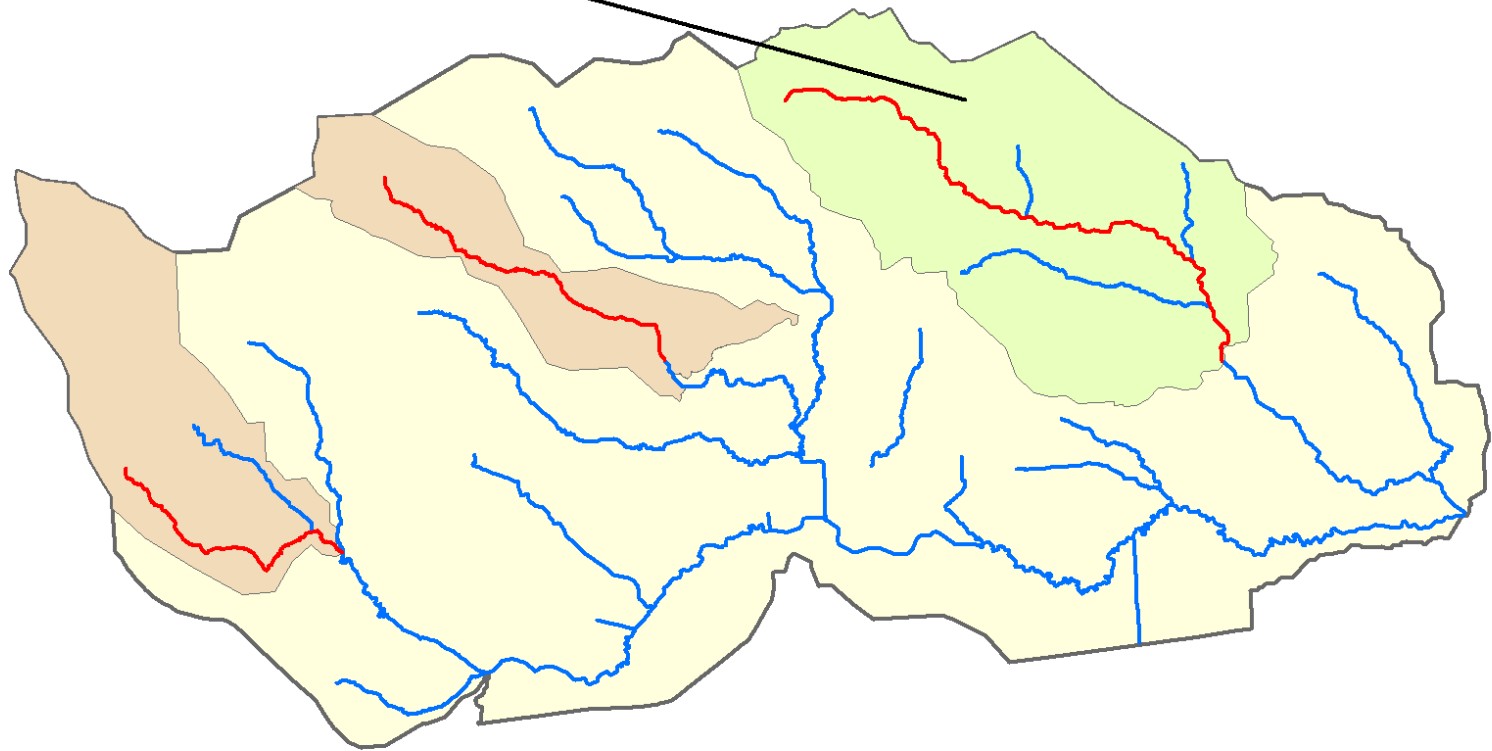
Universe
(Impaired Subwatersheds)



200 Sq. Miles

Example – Baseline

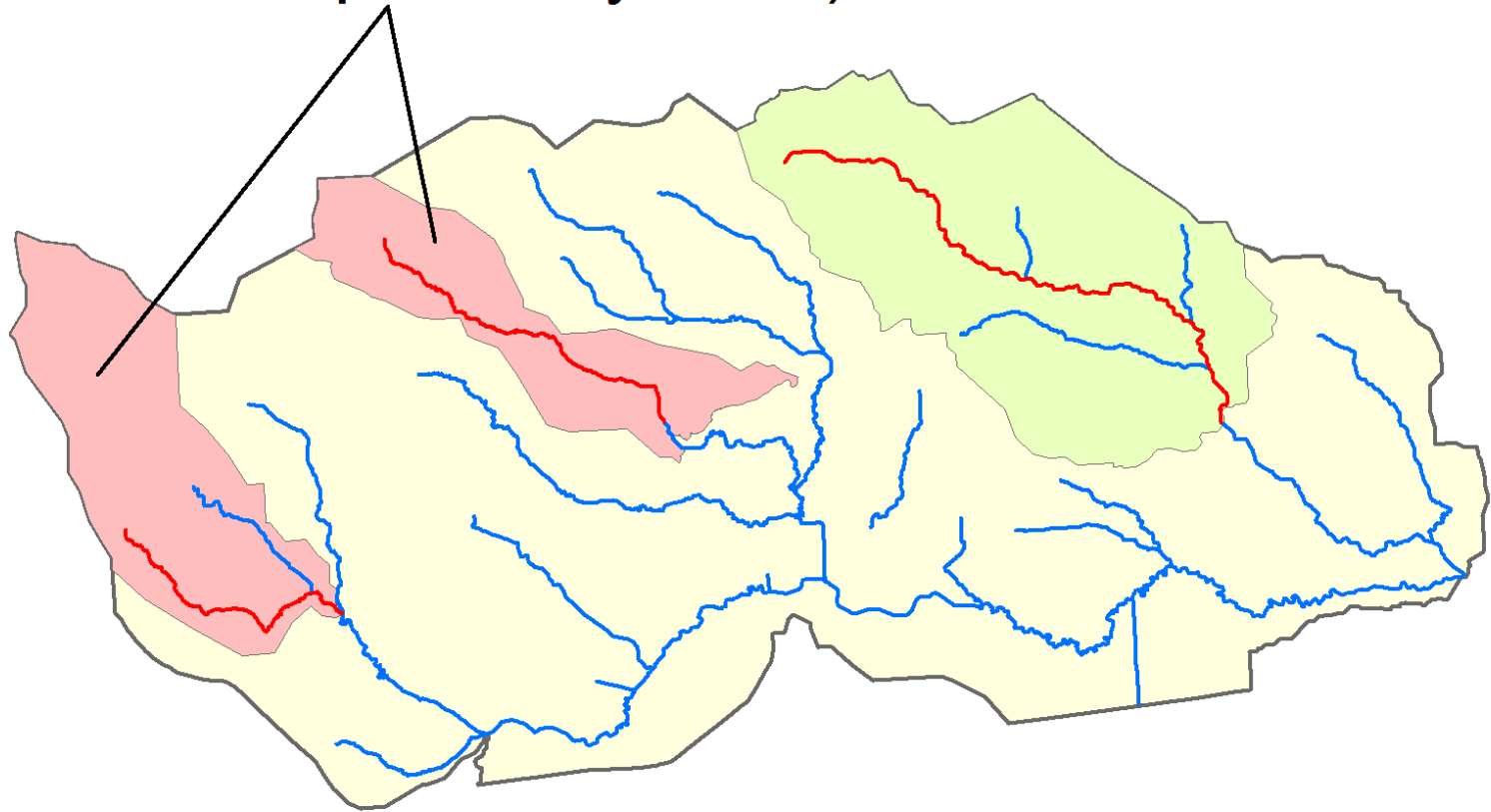
Baseline
(Completed Subwatersheds)



90 Sq. Miles
45%

Example – Target

Target
(To Be Completed By 2022)



200 Sq. Miles
100%

TARGET WATERSHEDS

- Preliminary candidates are:
 - Brazos-Colorado Coastal Basin (13)
 - San Jacinto River Basin (10)
 - San Jacinto-Brazos Coastal Basin (11)
 - Cypress Creek Basin (4)
 - Navasota River Watershed (1209)
 - Upper Trinity River Watershed (0805)
- Taking other nominations

INITIAL PROJECT

- Initiated in September 2013
- Three adjacent River Basins
 - Colorado-Lavaca Coastal Basin (15)
 - Lavaca River Basin (16)
 - Lavaca-Guadalupe Coastal Basin (17)
- Texas Water Resources Institute is conducting the work

GENERAL APPROACH

- 7 years to complete the plans
- Years 1-4
 - Initial outreach to raise awareness in the watershed
 - Determine the need for Recreational Use Attainability Analyses (RUAAs) and additional sampling
 - Complete the RUAAs and sampling

GENERAL APPROACH

- Years 4-7
 - Get stakeholder consensus on what approach will be used to develop plans
 - Develop plans
 - TMDL/Implementation Plan
 - Watershed Protection Plan
 - Both
 - Other

NEXT STEPS

- Continue work in Basins 15, 16, and 17
 - Continue outreach and education
 - Conduct RUAAAs
 - Conduct sampling
- Begin work in two additional watersheds
 - Navasota River (1209)
 - Upper Trinity River (0805)

A vintage-style map of Texas is centered on a light beige background. The map shows various cities, roads, and geographical features. Overlaid on the map is the text "Take Care OF TEXAS" in a bold, stylized font. "Take Care" is in red with a white outline, "OF" is in red with a white outline, and "TEXAS" is in black with a white outline. A small "TM" trademark symbol is located at the bottom right of the word "TEXAS".

Take Care
OF **TEXAS**™