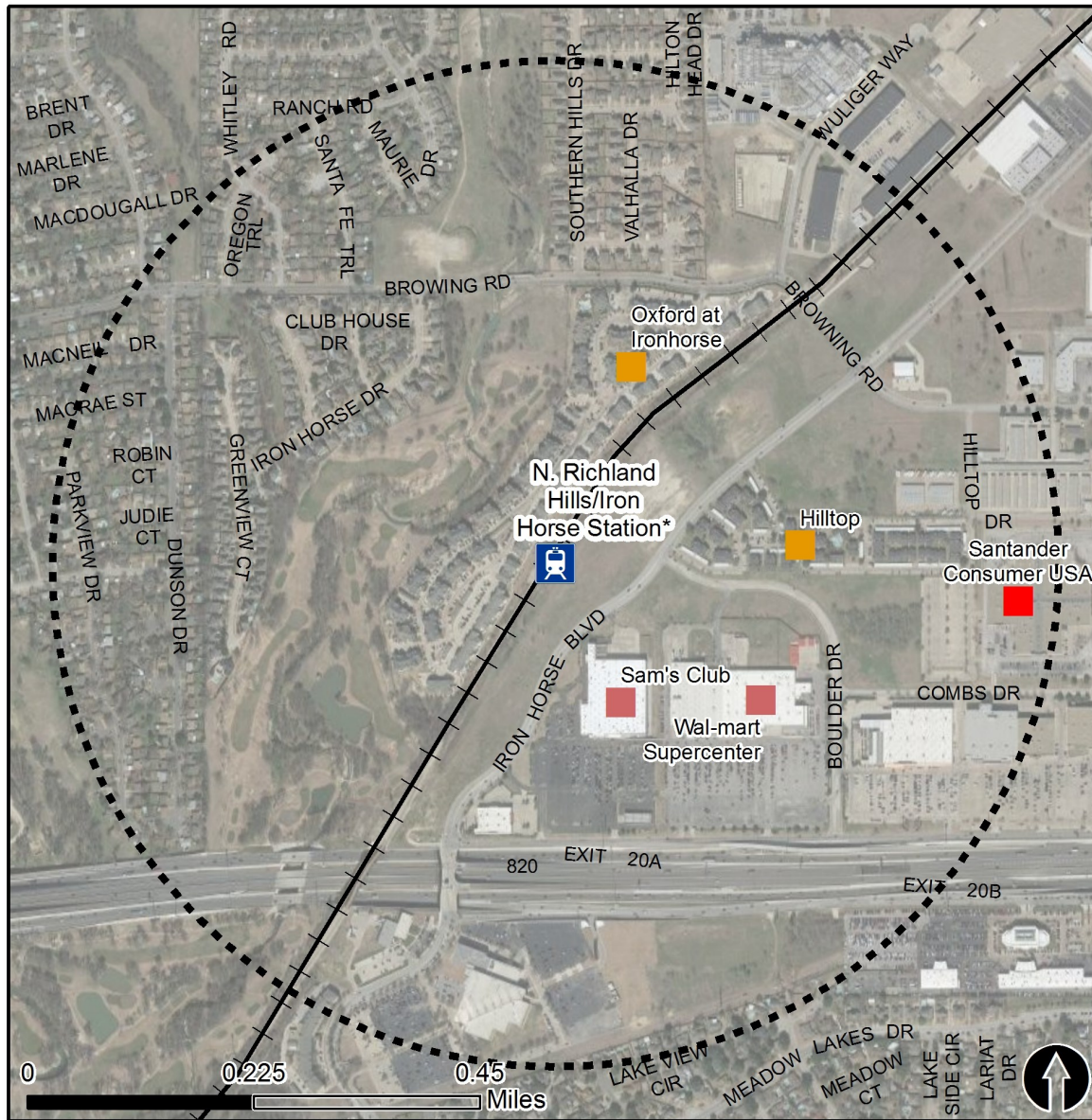


Rail Station Fact Sheet – North Richland Hills/Iron Horse Station*

(*station under construction with anticipated start of service in late 2018)



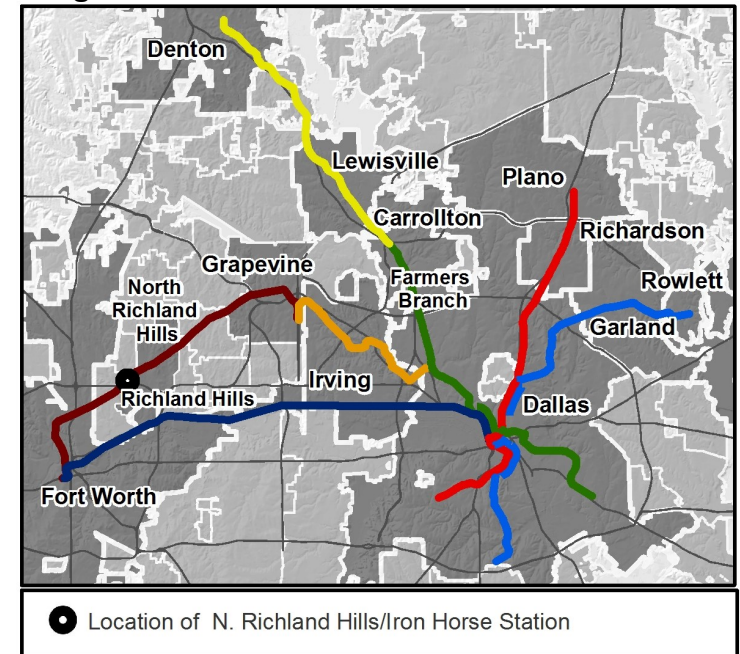
North Central Texas
Council of Governments



Station Overview

North Richland Hills Iron Horse Station will be located on Iron Horse Boulevard north of Interstate Highway 820. The station's anticipated opening will be in late 2018 as part of TEX Rail service from Downtown Fort Worth to DFW International Airport Terminal B.

Regional Rail Transit Lines



0.5 Mile
Station Buffer



Rail Stations



Rail Lines

Key Developments



Multi-Family



Office



Retail

Rail Station Fact Sheet – North Richland Hills/Iron Horse Station*

(*station under construction with anticipated start of service in late 2018)



North Central Texas
Council of Governments

Station Characteristics¹

Address	
City	North Richland Hills
Agency	Fort Worth Transportation Authority
Rail Line(s)	TEX Rail
Corridor	TEX Rail
Year Opened	2018
Park & Ride Spaces	386

Ridership¹

2015 Avg. Weekday	N/A
2015 Avg. Saturday	N/A
2015 Avg. Sunday	N/A

2014 On-Board Transit Survey: Access Mode to Station²

Bike	N/A
Drive Alone	N/A
Carpool	N/A
Walk	N/A
Drop Off	N/A
Other	N/A
Transit Transfer	N/A

Station Area Plans and Studies

Title	North Richland Hills Iron Horse and Smithfield Station Area Plan
Publisher	FWTA and the City of North Richland Hills
Year	2009
Web Location	http://www.texrail.com/Portals/0/Documents/NRH-I.H.%20&%20Smith%20Station%20Area%20Plan%20Draft%20Web.pdf

Station Area Characteristics (1/2 mile radius)

Demographics³

Total Population	5,918
Population Density (pop/sq. mile)	2,521
Average Median Age	42
Average Median Income	\$57,125.50

Housing³

Total Housing Units	2,670
Housing Density (units/sq. mile)	1,137
Percent Occupied	92%
Percent Owner-Occupied	69%
Percent Renter-Occupied	31%

Commute To Work³

Percent Automobile	92.8%
Percent Drive Alone	84.6%
Percent Carpool	8.3%
Percent Transit	0.2%
Percent Bike	0.0%
Percent Walk	0.6%
Percent Other	2.0%
Percent Work from Home	4.3%
Percent Zero-Vehicle Households	1.7%

Traffic Survey Zone 2017 Employment Forecast²

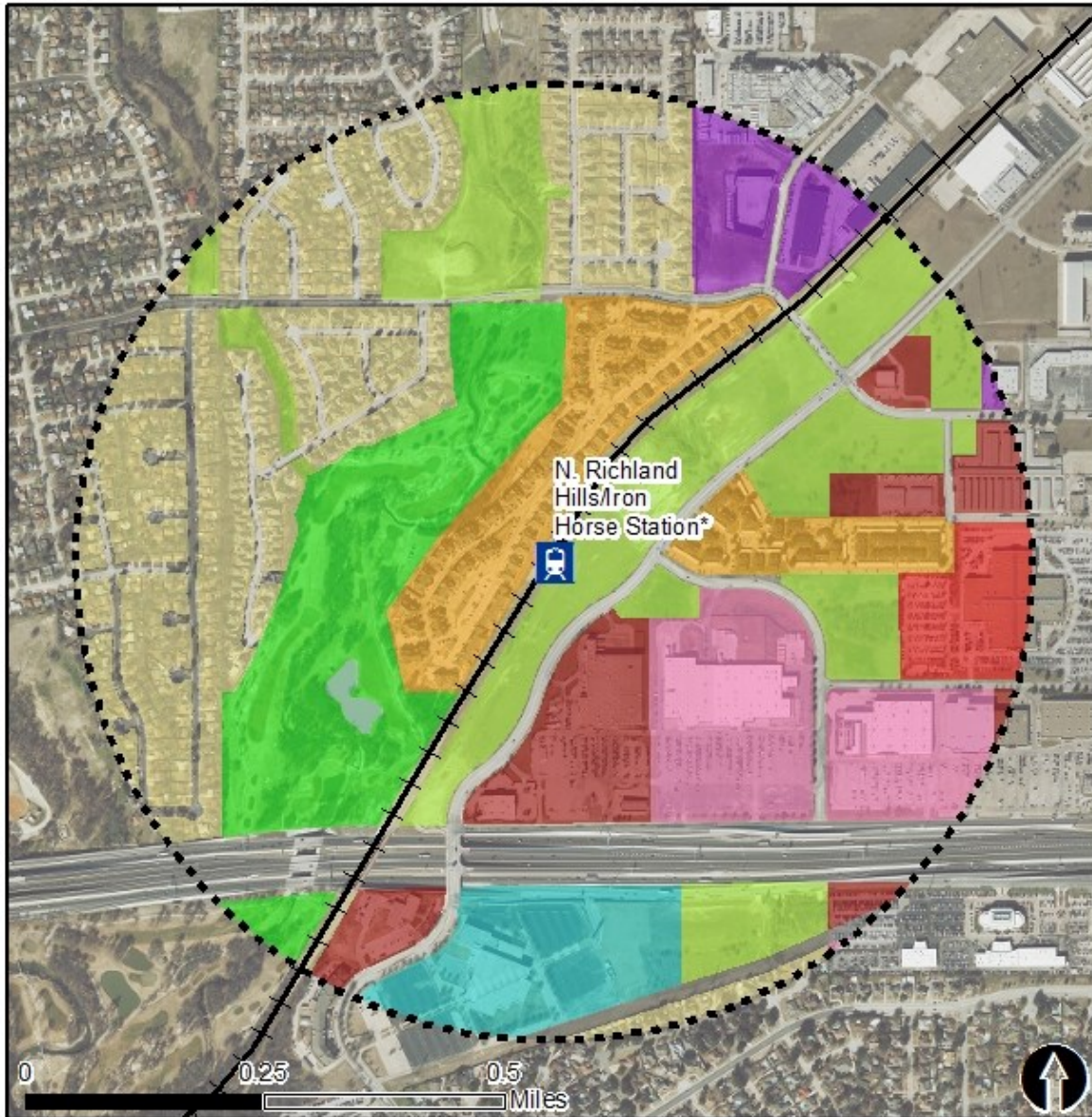
Total Jobs	8,237
Job Density (jobs/sq. mile)	4,425

Land Use (2016) – North Richland Hills/Iron Horse Station*

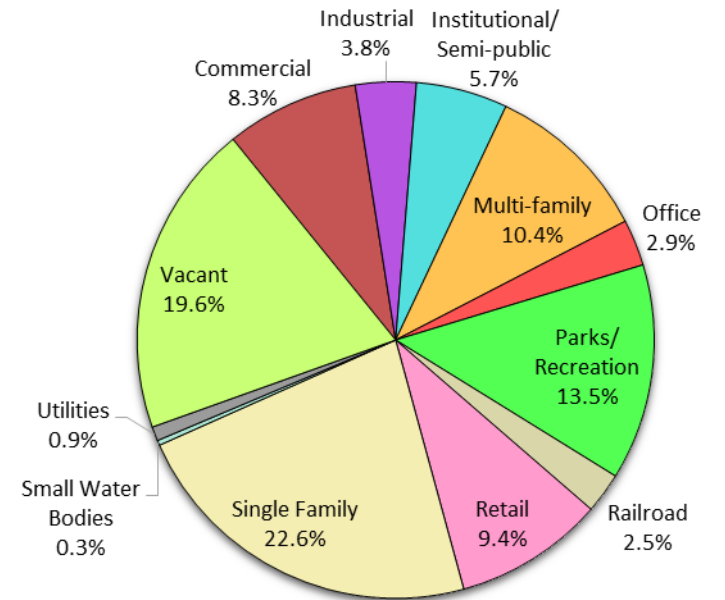
(*station under construction with anticipated start of service in late 2018)



North Central Texas
Council of Governments



Land Use Percentages



0.5 Mile
Station Buffer



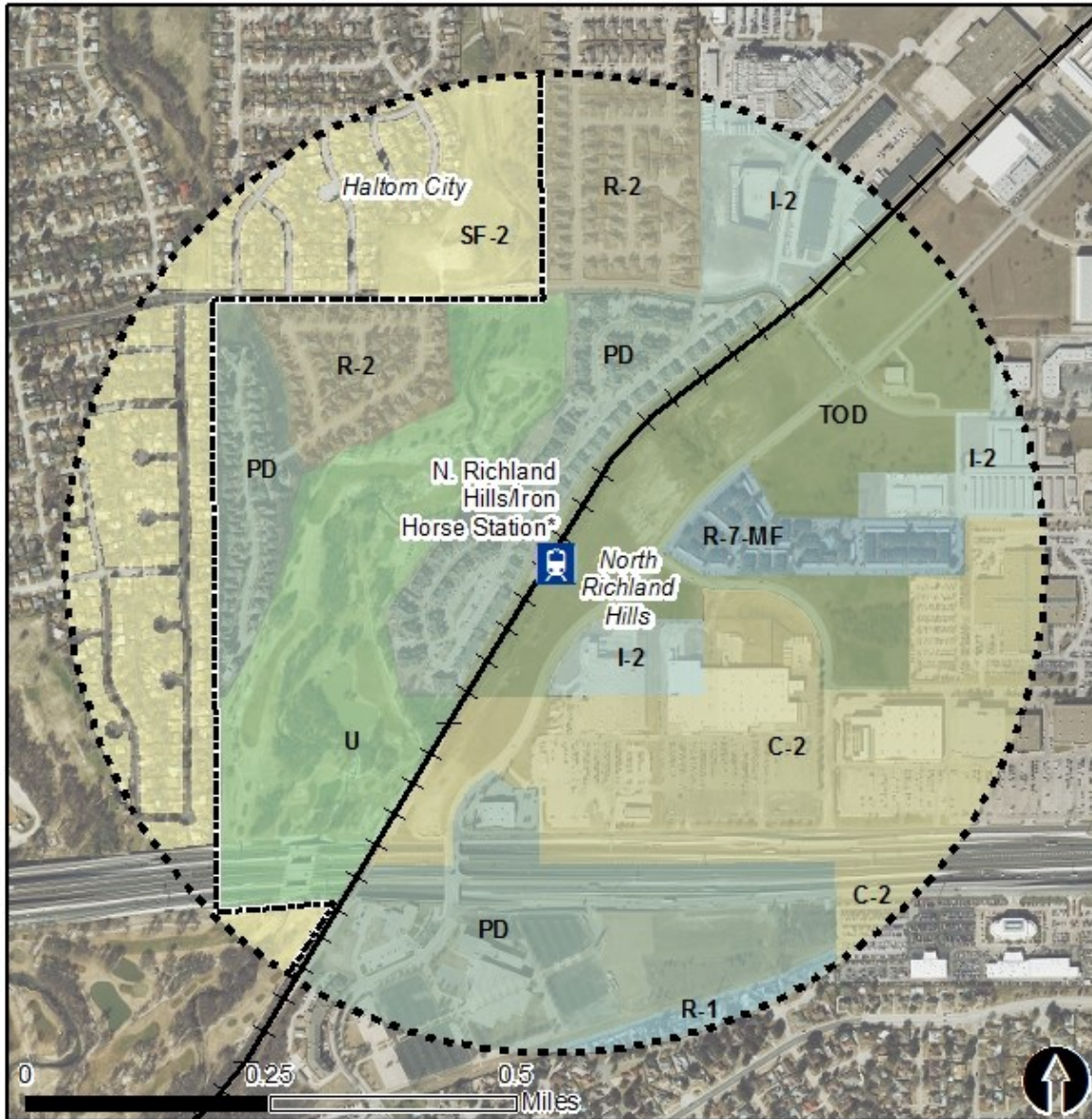
Rail Stations + + Rail Alignment

Zoning (2016) – North Richland Hills/Iron Horse Station*

(*station under construction with anticipated start of service in late 2018)



North Central Texas
Council of Governments



Zoning Districts

North Richland Hills

- C-2 – Commercial
- I-2 – Medium Industrial
- PD – Planned Development
- R-1 – Single Family
- R-2 – Single Family
- R-7 MF – Multi-Family
- TOD – Transit Oriented Development
- U – School, Church, Institutional

Haltom City

- SF-2 – Single-Family Residential

For more information on North Richland Hills zoning, please visit: <https://www.nrhtx.com/256/Planning-Development>

For more information on Haltom City zoning, please visit: <http://www.haltomcitytx.com/ordinances/zoning-ordinance>



0.5 Mile
Station Buffer



Rail Stations



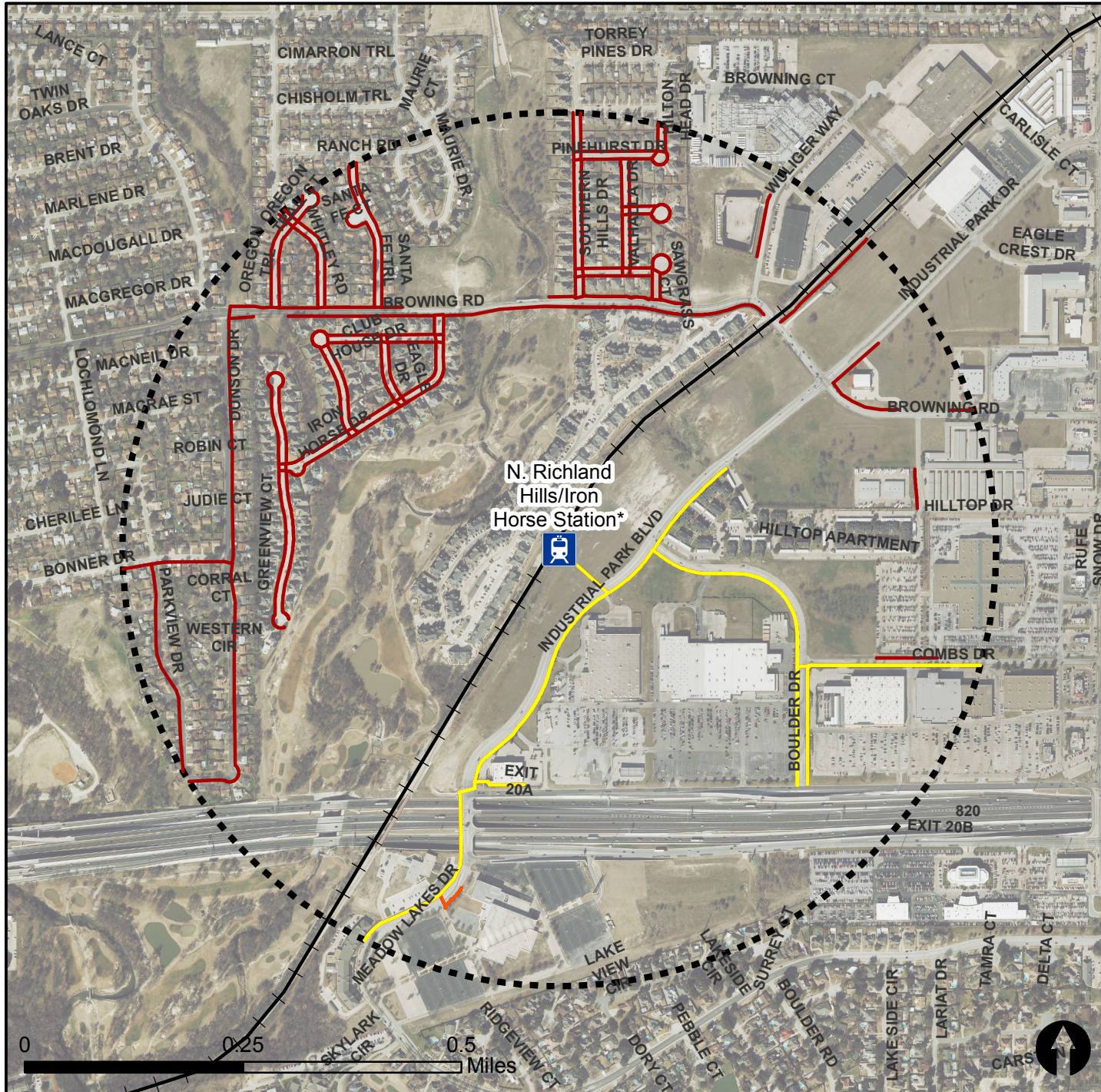
Rail Lines

Pedestrian Routes to Rail - N. Richland Hills/Iron Horse Station*







Last Updated: October 2016 (*Station under construction with anticipated start of service in late 2018)



North Central Texas
Council of Governments



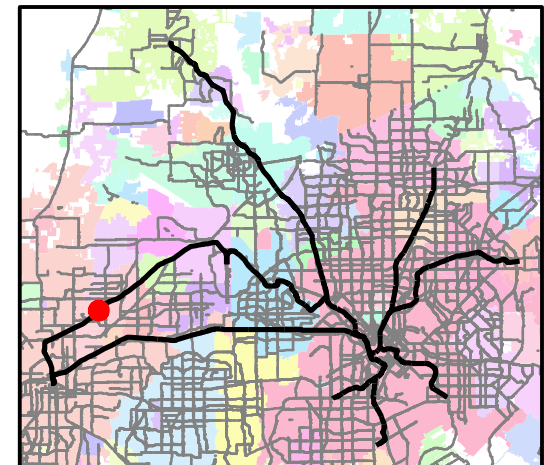
Legend

-  Rail Stations
-  0.5 Mile Station Buffer
-  Railroads
-  Existing sidewalk facilities within a 0.5 mile walk distance (*platform connections constructed with station)
-  Existing sidewalk facilities greater than a 0.5 mile walk distance
-  Existing sidewalk facilities that disconnected due to a gap in the network

Project Overview

The Pedestrian Routes to Rail study identifies all existing pedestrian facilities within a half-mile radius of existing light rail and commuter rail stations in the Dallas-Fort Worth region based on 2014 data. ArcGIS Network Analyst tool was used to identify continuous facilities that are less than or greater than a half-mile actual walking distance to a station. The maps also reflect existing facilities that are disconnected due to gaps or other barriers not allowing a continuous pedestrian route to a station. The maps do not reflect the condition or ADA compliance of the existing infrastructure. More information on the Routes to Rail study and methodology is available at:

nctcog.org/RoutesToRail



Bicycle Routes to Rail - N. Richland Hills/Iron Horse Station*

Last Updated: October 2016 (*Station under construction with anticipated start of service in late 2018)



North Central Texas
Council of Governments



Legend



Rail Stations



0.5 Mile
Station Buffer



Rail Lines



On-Street Bikeway, Existing



On-Street Bikeway, Planned



2040 Veloweb



Off-Street Path, Existing



Off-Street Path, Planned

Project Overview

The Bicycle Routes to Rail study identifies all existing and planned bikeways in proximity to existing or under-construction light rail and commuter rail stations in the Dallas / Fort Worth region based on 2016 data. The maps reflect off-street paths (trails) and streets designated by local adopted master plans for dedicated bikeways (e.g. bike lanes, cycle tracks) located on the street. In accordance with the Texas Transportation Code, bicyclists have a right to the road. As such, the map does not reflect other roadways around the station that may have signed bike routes or by state law may be used by bicyclists. More information about the Routes to Rail study and methodology is available at:

nctcog.org/RoutesToRail

