

# Feral Hog 101

**Rachel Richter**

**Urban Wildlife Biologist**

**Texas Parks and Wildlife**

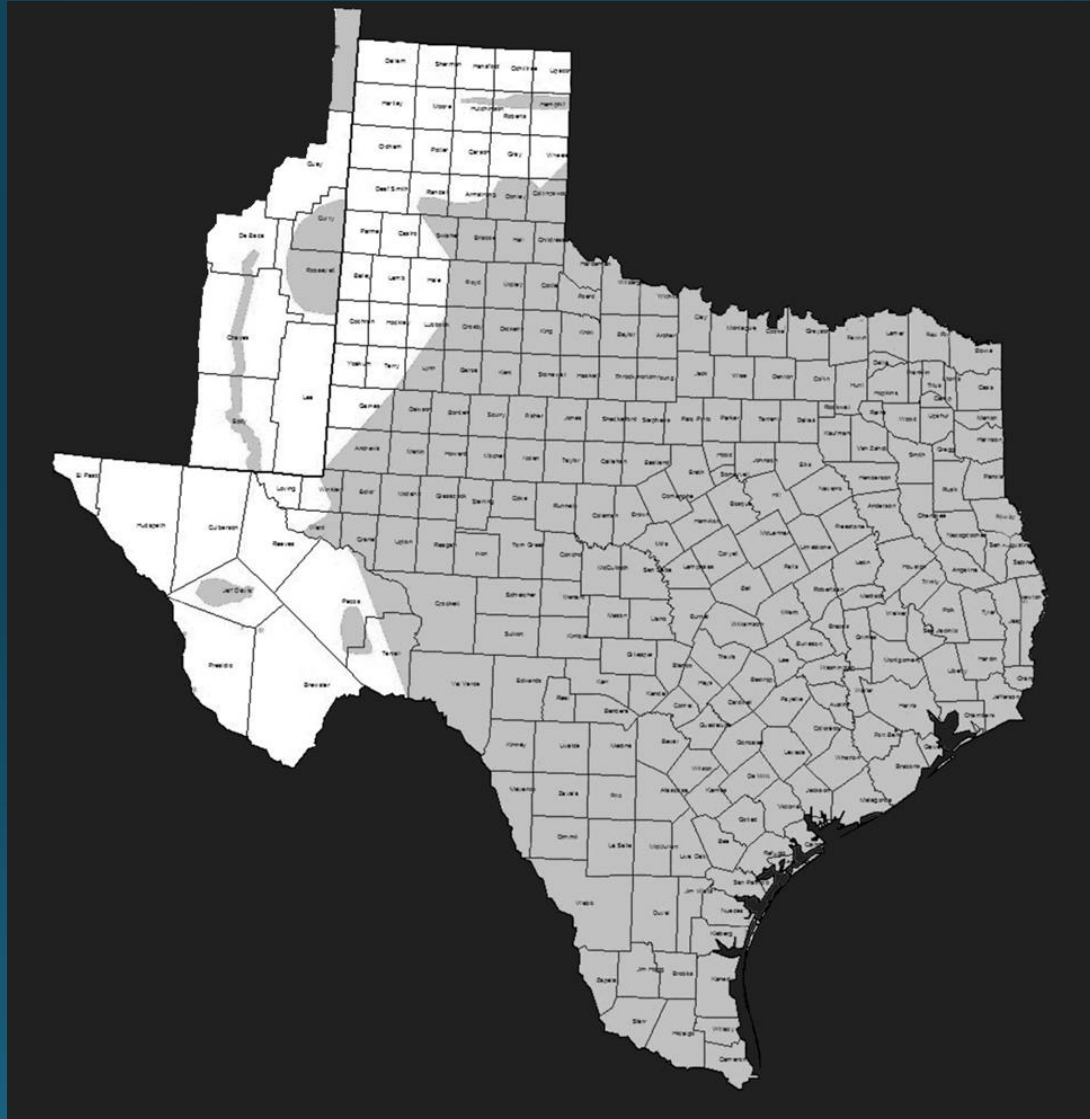
**TEXAS  
PARKS &  
WILDLIFE**

# How did they get here?

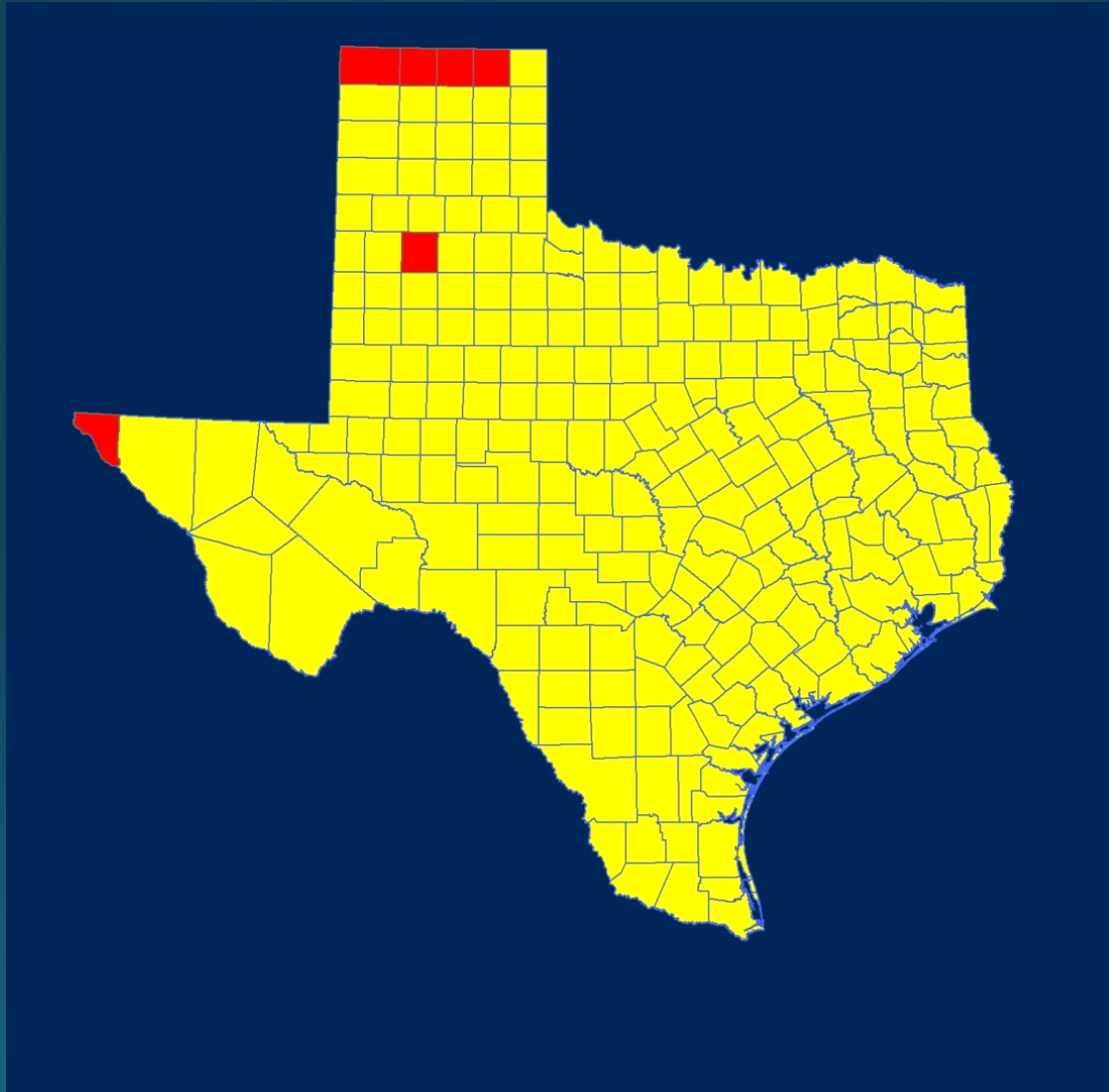
- **Domesticated pigs 1<sup>st</sup> introduced by early Spanish explorers**
- **Wild boars were introduced for hunting in 1930s**



# Distribution: 2004



# Distribution: 2010



# Reasons for Spread

- **Reproduce quickly**
- **Low natural mortality rates**
- **Highly adaptable generalist**



# Reproduction

- **Sexual maturity at 6-10 months**
  - **1<sup>st</sup> litter at ~13 months**
- **Capable of producing 2 litters/year**
- **Year-round breeding**
  - **Seasonal peaks in late winter/early spring and midsummer**
- **Litter size typically 3-8**
- **Good habitat results in higher reproductive rates**

# Population Growth

- **1.8-3.4 million hogs in Texas**
- **18-21% annual population growth**
- **66% population removal required to stop growth**



# Population Control

- **29% population removal currently in Texas**
  - **Without harvest, population would triple in 5 years**
  - **Under current harvest rates, population expected to double every 5 years**
- **Intense, strategic, adaptive, collaborative approach is necessary**





# Suitable Habitat

- **Adaptable generalist**
- **Prefer riparian and wetland areas**
- **Thick vegetation for shelter**
- **Crops and wildlife feeding stations are attractive food sources**

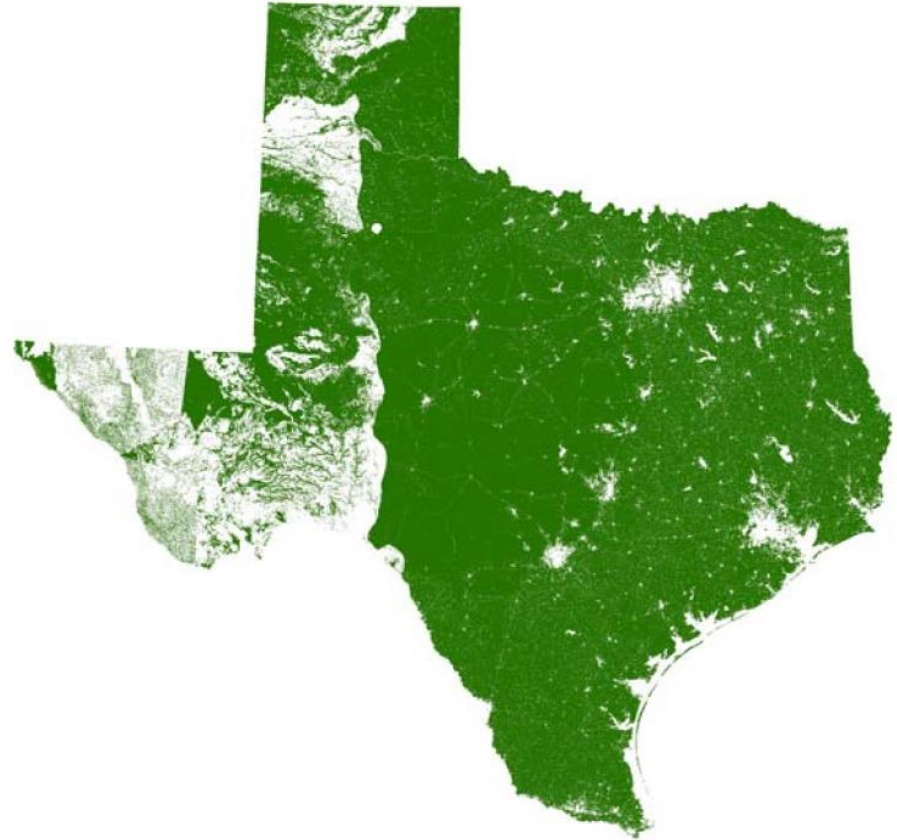
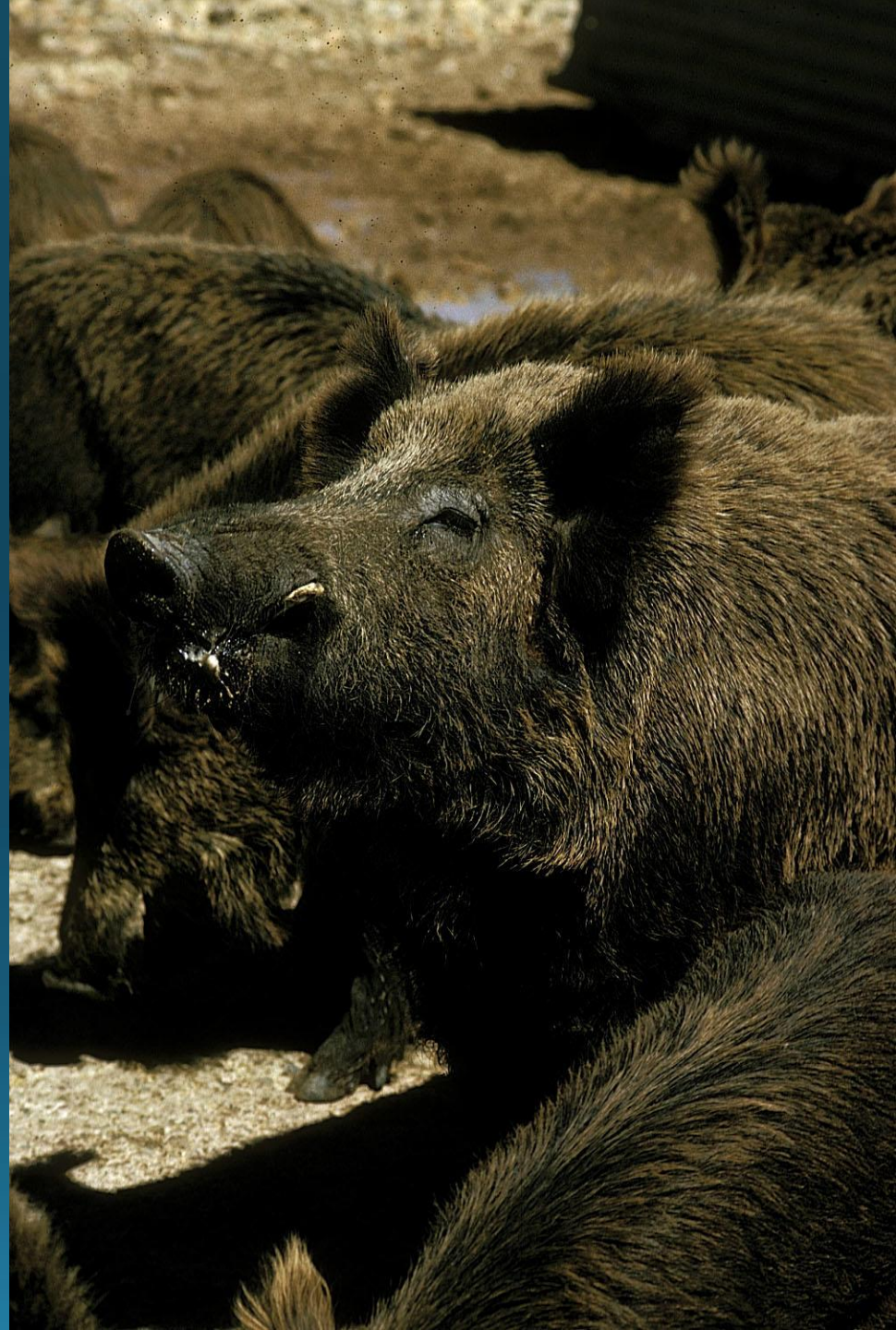


Figure 2. Feral hog suitable habitat (green).

Source: Feral Hog Statewide Population Growth and Density, Texas A&M AgriLife Extension

# Disease Vectors

- **Brucellosis**
- **Leptospirosis**
- **Salmonella**
- **Toxoplasmosis**
- **Sarcoptic Mange**
- ***E. coli***
- **Trichinosis**
- **Pseudorabies**
- **Tuberculosis**
- **Vesicular Stomatitis**
- **Swine Fever**
- **Hoof-and-Mouth Disease**



# **\$1.5 Billion in Damage Annually**



**Water Quality**

**Erosion**

**Vehicle Collisions**

**Increased Invasive Plants**

**Native Wildlife**

**Landscaping**

**Livestock**

**Crops**

**Natural Habitats**

**Public and Private Lands**

# Questions?

## Contact Info:

**Rachel Richter**

**[rachel.richter@tpwd.texas.gov](mailto:rachel.richter@tpwd.texas.gov)**

**972-293-3841**

**TEXAS**  
**PARKS &**  
**WILDLIFE**