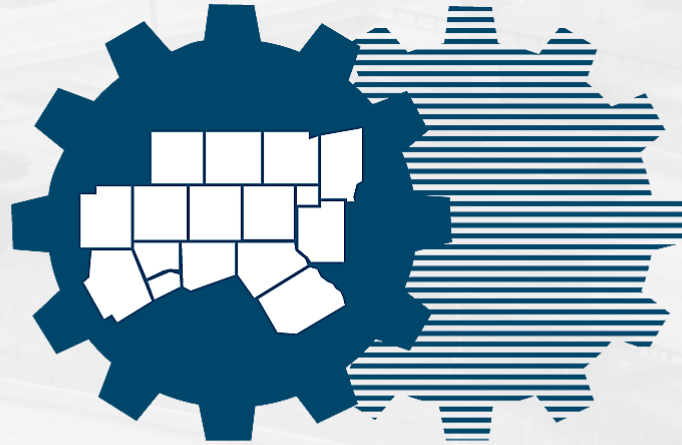
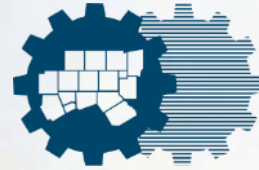


**Meeting will begin shortly**



**North Central Texas  
Council of Governments**

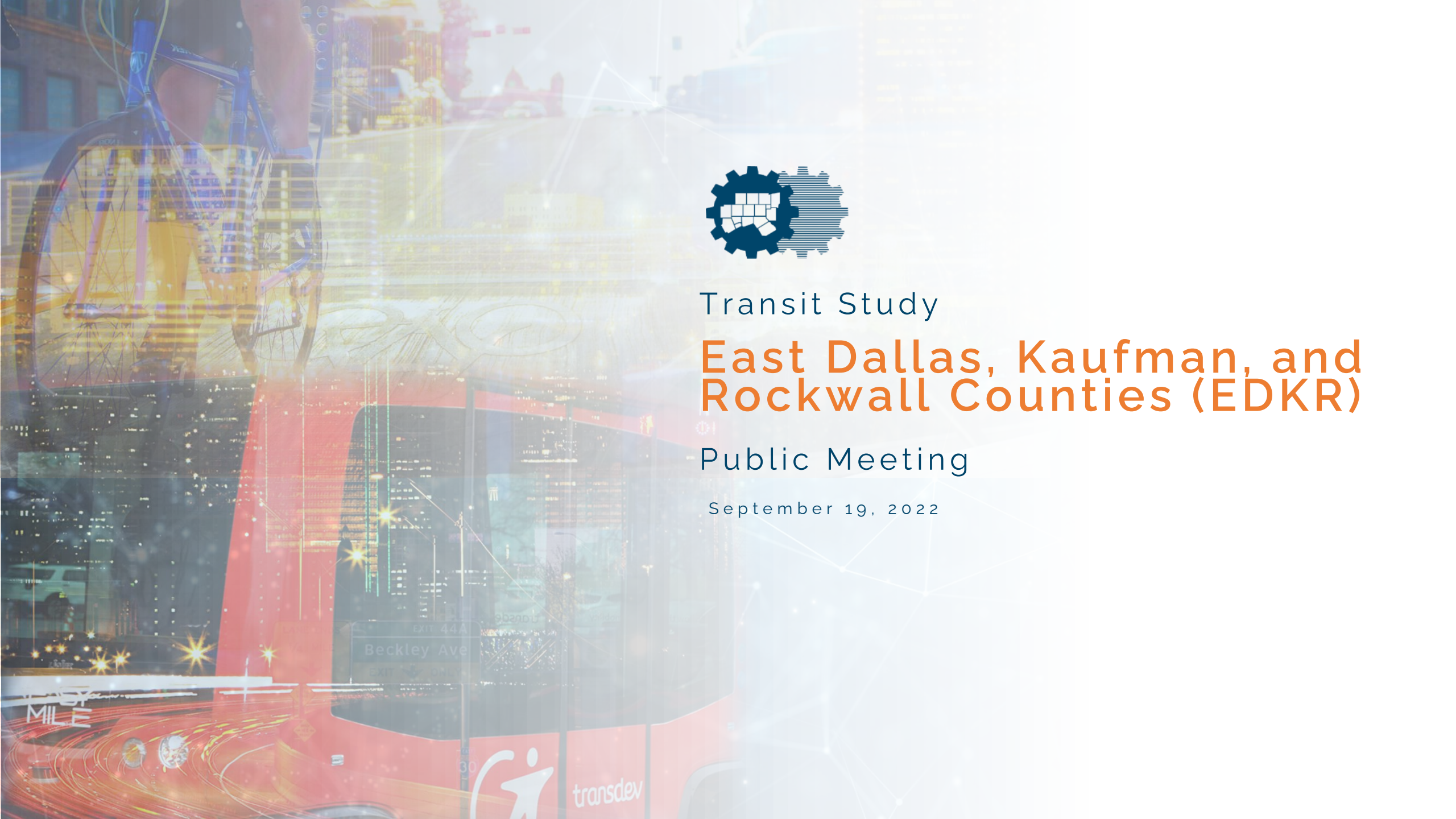


Transit Study

# East Dallas, Kaufman, and Rockwall Counties (EDKR)

Public Meeting

September 19, 2022



# SUBMIT QUESTIONS AND COMMENTS TO:

Website: [publicinput.com/nctcogEDKR](https://publicinput.com/nctcogEDKR)

Email: [nctcogEDKR@PublicInput.com](mailto:nctcogEDKR@PublicInput.com)

Participate by Phone: Dial 855-925-2801. Enter meeting code: 4816

1. Leave Voicemail: Press \*2 to leave a message.
2. Speak Live During Meeting: Press \*3 to enter queue.


Mute computer speakers when your speaking time begins.  
State your name and city/organization/affiliation.


Fax: 817-640-3028

Mail: P.O. Box 5888, Arlington, TX 76005-5888

To request hard copies of presentation materials, call or email.

# AGENDA

 Welcome and Introductions

 Background, Study Purpose

 Study Area and Existing Transit Services

 Polling session

 Phasing & Schedule

 Scope & Deliverables

 Next Steps

 Q&A



# BACKGROUND: TRANSIT STUDIES

Request Received from Mesquite in 2019

- Balancing Transportation Needs
- Addressing Equity
- Member/Non-Member Cities Considerations

## Transit Studies Based on Common Framework

- *Three* Completed (Collin, S. Dallas, Tarrant Counties)
- *Two* Underway (Denton, EDKR Counties)

Common Elements	EDKR
Internal and regional connections	✓
Strategic implementation	✓
Near-term horizon (now to 10 years)	✓
Increase transportation options and innovation	✓
Funding options	✓
Private sector involvement	✓



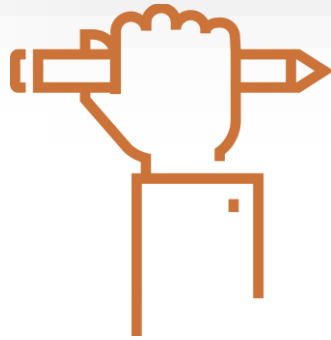
# Things to Consider

1. What are the biggest Mobility needs in your community?
2. Are there any specific groups in your community whose needs aren't being met?
3. What is one change that would improve your daily transit experience?



# STUDY PURPOSE

Develop a comprehensive approach to planning and implementing transit services outside of transit authority services areas.



---

**Implement Near-Term  
Strategies**



---

**Review Transportation  
Options**



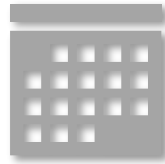
---

**Identify Funding  
Options**



# PROJECT OVERVIEW

**Time:**  
0-10+ Years



## **Geography:**

- East Dallas
- Kaufman County
- Rockwall County  
(outside of DART service area)



**Audience:**  
Municipalities



**Outcomes:**  
Mobility options  
& next steps





# PROJECT OUTCOMES

Conditions +  
Need



Mobility  
Options



Funding



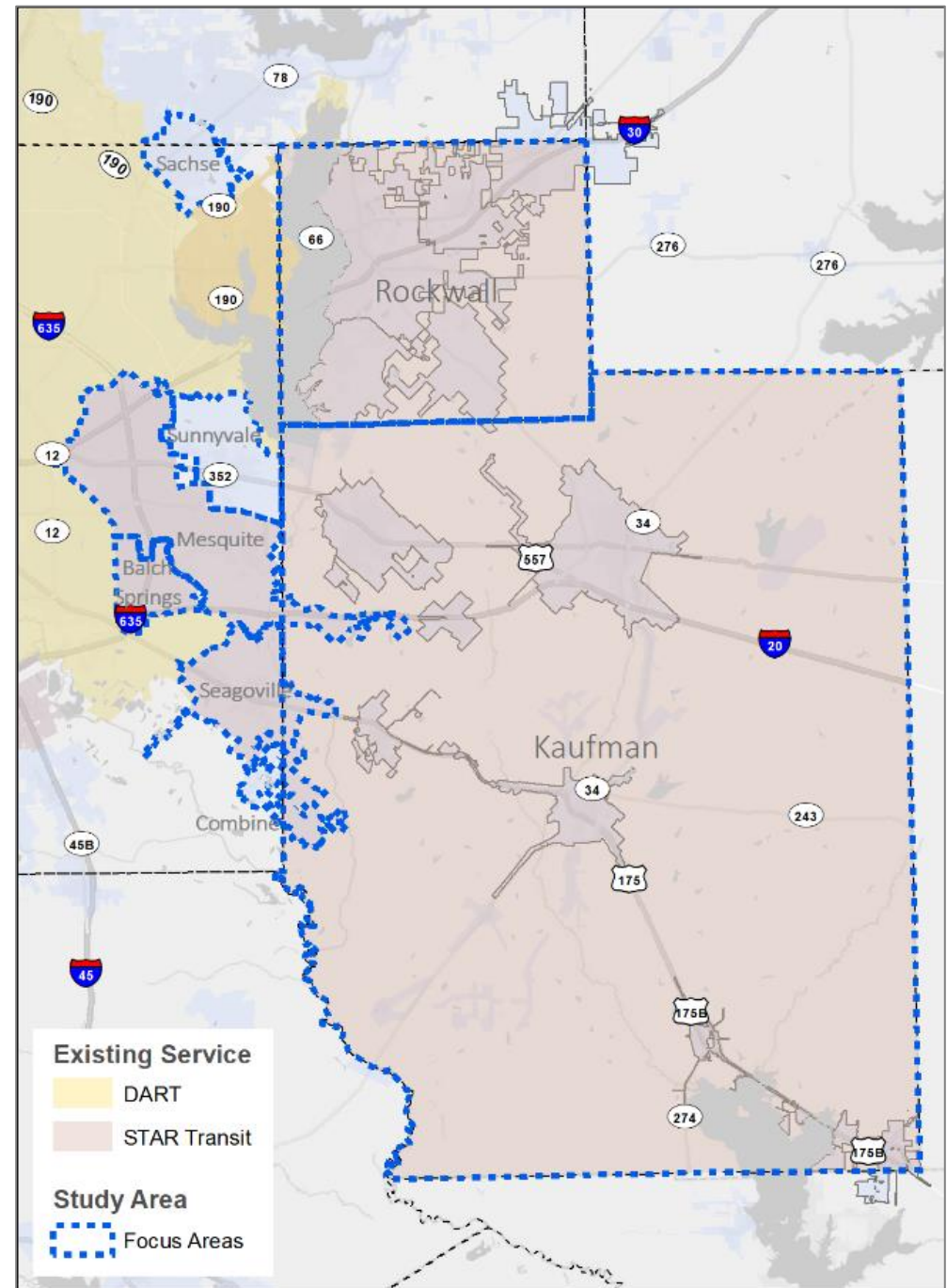
Implementation



# STUDY AREA

Focus Areas:  
Non-Member Cities

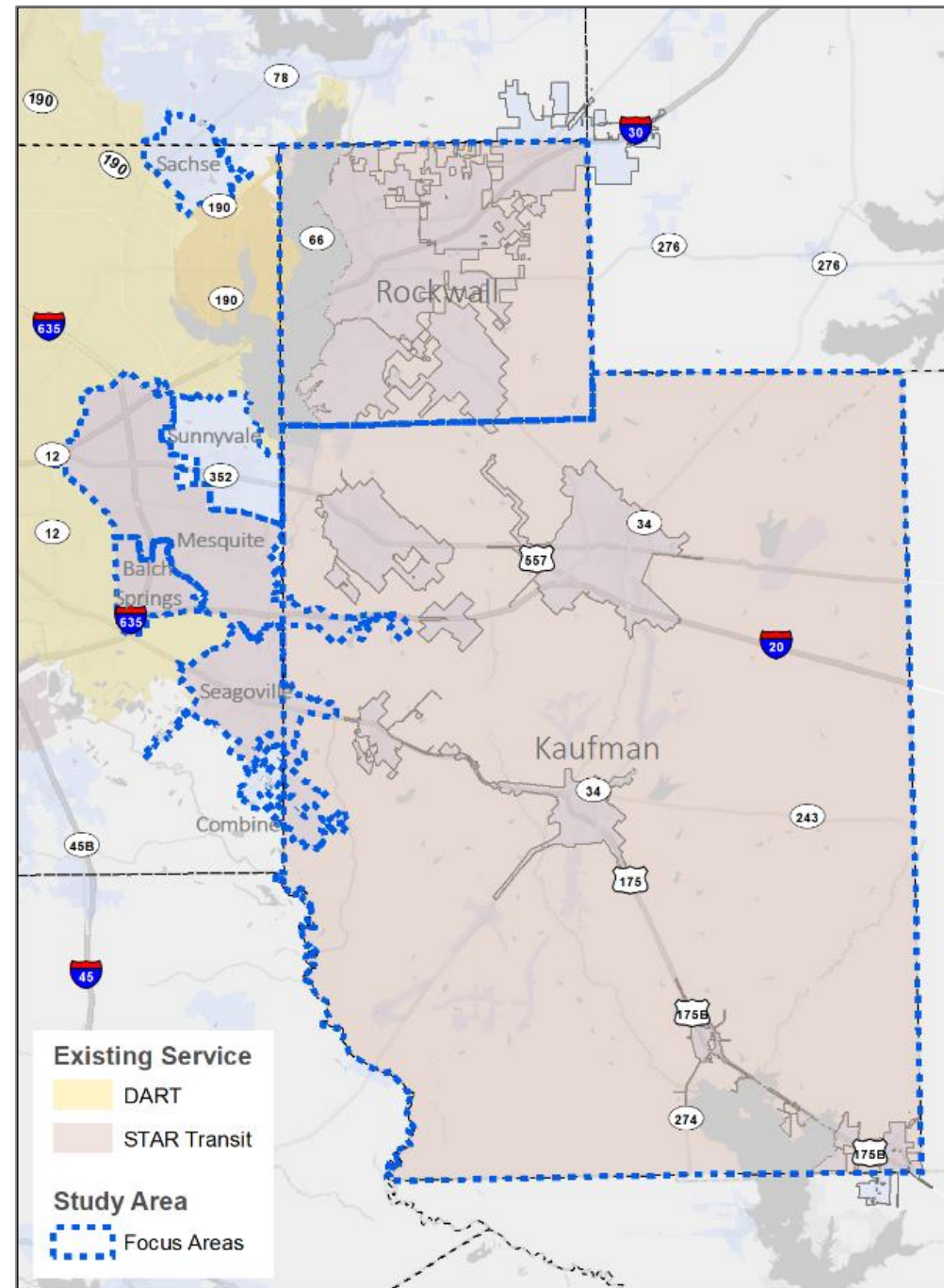
Existing Providers:



# STUDY AREA

## Building Blocks

- Mobility 2045
- Access North Texas
- Mesquite Transit Service Plan
- Other County Transit Studies
  - Tarrant
  - Collin
  - South Dallas
  - Denton (ongoing)
- Intermodal Transportation Hub for Colleges and Universities (ongoing)



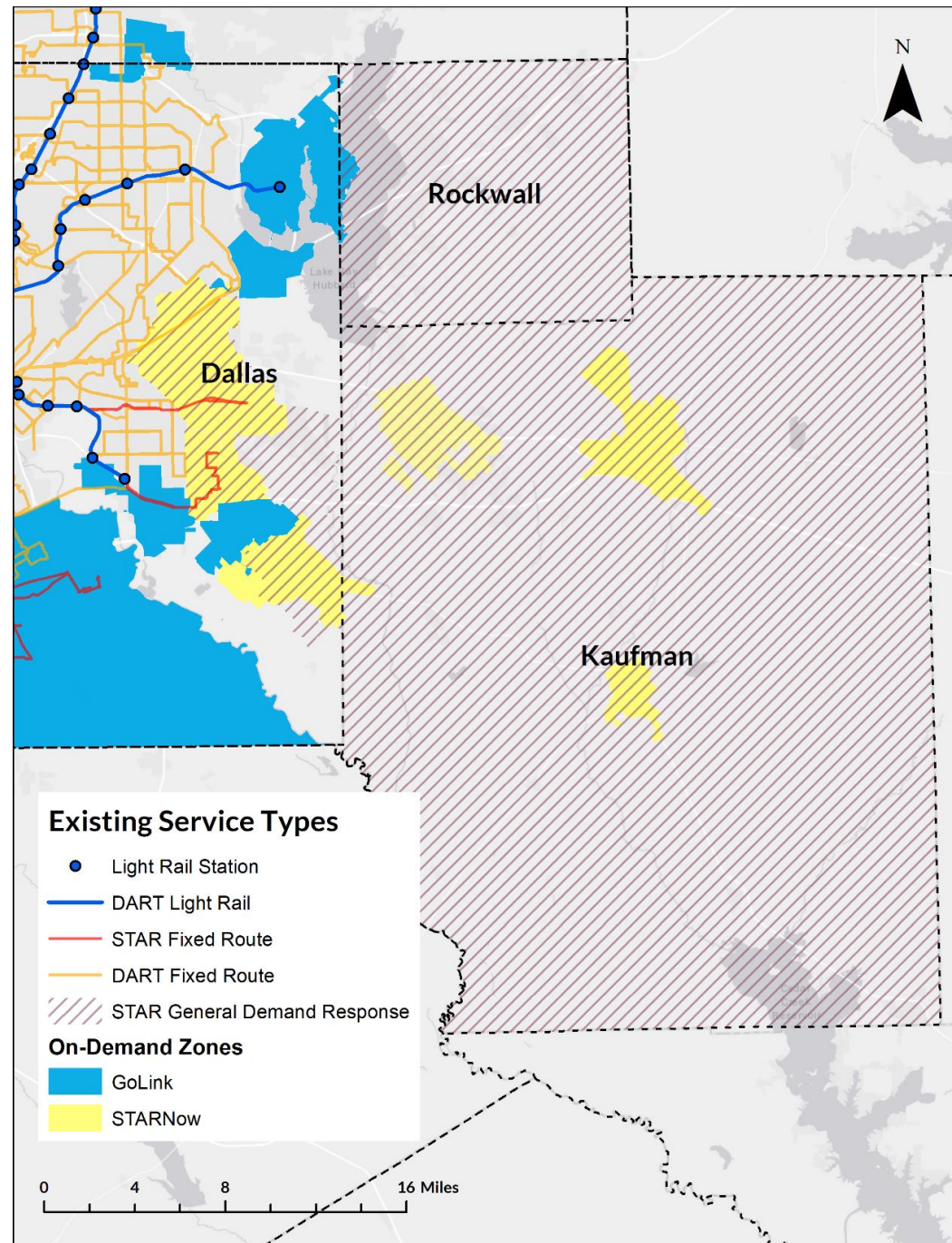
# Transit Service Types

EDKR Transit Study Service Type	Purpose	Local Examples
Demand Response	Connects lower-density areas with no fixed-route service; Origin to destination connections	STAR Dial-a-Ride
Mobility on Demand	Connects lower-density areas; First-mile/Last-mile connections	STAR Now On-demand
Light Rail	Connects large distances on exclusive right of ways	DART Blue Line & Green Line
Local Fixed-route Bus	Connects medium-density areas for all trip types	201 Mesquite COMPASS
Regional Fixed-route Bus	Connects distant destinations and job centers	101 Balch Springs Midtown Express

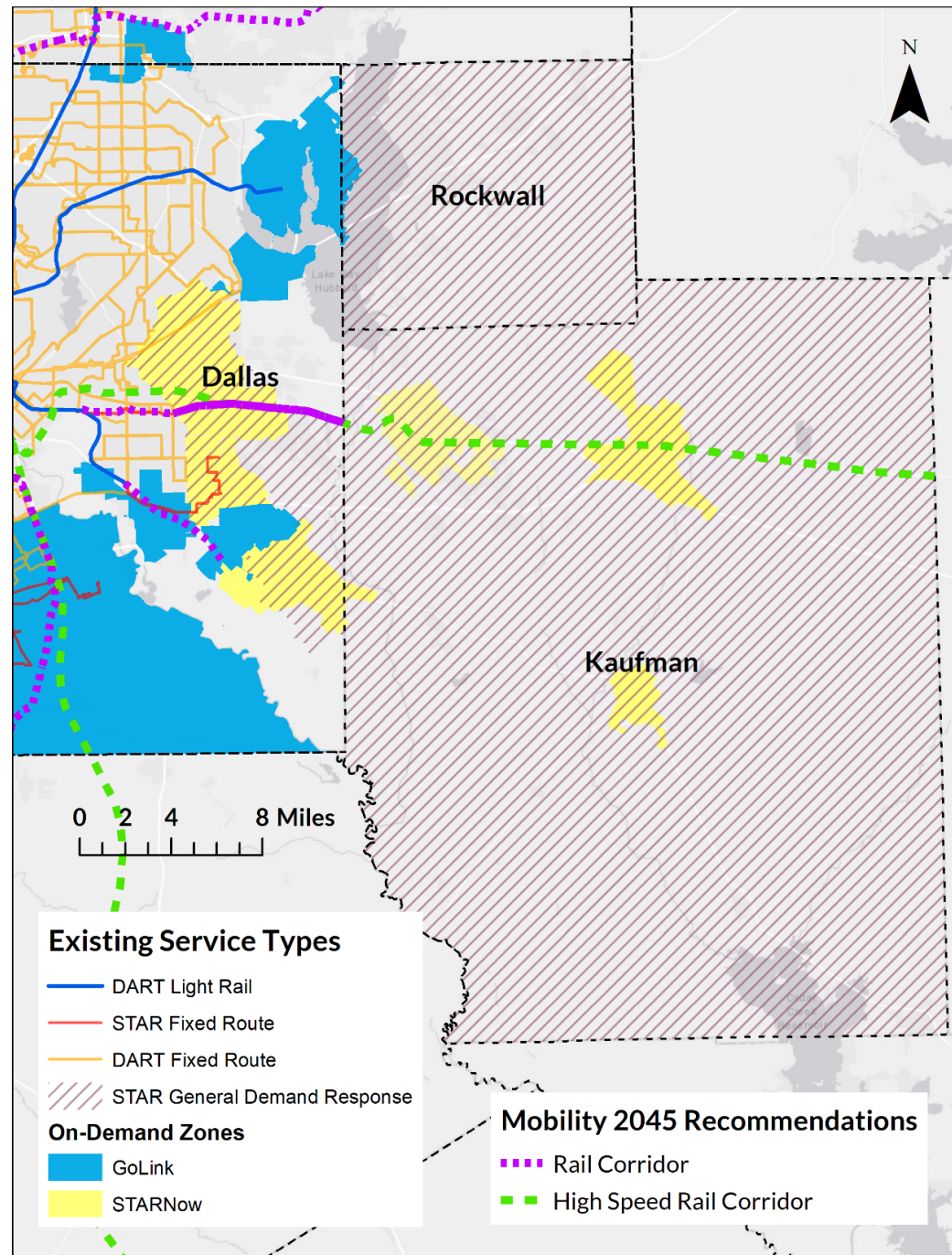


# Transit Service Types

- Light Rail
- Fixed-Route
- Demand Response
- On-Demand



# Mobility 2045 Recommendations



# Polling Session

On your computer or mobile device, visit [ttpoll.com](http://ttpoll.com) and enter **EDKRSept2022** to join the session.

- It is recommended that you use Google Chrome or Firefox
- Click “Join” – DO NOT enter contact information

For multiple choice, press the letter on your device that corresponds to the answer choice on the screen.

Once you have selected your response, your answer choice will be highlighted and recorded.

The poll will appear closed at first.



In one word, how would you describe mobility in your community?





# What mobility options have you seen in other communities that could work in yours?

- A. Bus/Fixed Route
- B. Bus Rapid Transit
- C. Commuter Rail
- D. On-Demand Transit
- E. Other



# If available, how likely are you to take transit?

- A. Not at All
- B. Less Likely
- C. Neutral
- D. More Likely
- E. Will Take if Available



# Which factors encourage you to take transit? Select all that apply.

- A. Save Money
- B. Reliability
- C. Accessibility
- D. Ease of Use
- E. Less Reliance on a Personal Vehicle
- F. No Driver's License
- G. Safety
- H. Convenience
- I. Other



# TRANSIT STUDY PHASING

## PHASE 1

### Comprehensive Needs & Market Assessment

Understand baseline conditions to inform scenario development and subsequent tasks (Phase 2)

## PHASE 2

### Potential Solutions & Implementation Strategies

Develop potential service scenarios based on key findings identified in Phase 1



# ANTICIPATED SCHEDULE

Date	Deliverable
Summer/Fall 2022	Public & Stakeholder Involvement
Winter 2022	Existing Conditions
Winter 2022	Project Advisory Committee Meeting
Spring 2023	Market Needs Assessment
Spring 2023	Public Meeting (In-Person)
Summer 2023	Scenario Development
Fall 2023	Funding/Finance
Fall 2023	Implementation
Winter 2023	Final Report



# SCOPE & DELIVERABLES

## 1. Project Management

## 2. Public and Stakeholder Involvement

**Key Goal:** Ensure community needs and preferences are understood and incorporated by offering opportunity/access to participate in the study and its future implementation.



# SCOPE & DELIVERABLES

## 3. Existing Conditions (Part 1 of Comprehensive Assessment)

**Key Goal:** Develop a robust understanding of the diverse contexts and communities of E. Dallas, Kaufman, and Rockwall Counties.

## 4. Market/Needs Assessment (Part 2)

**Key Goal:** Understand the full range of mobility needs and potential for the present and future.



# SCOPE & DELIVERABLES

## 5. Scenario Development and Evaluation

**Key Goal:** Develop visionary, but realistic, scenarios to build recommendations for local and regional transit connections.

## 6. Funding and Finance

**Key Goal:** Explore and set paths for innovative and sustainable funding.





# SCOPE & DELIVERABLES

## 7. Implementation Strategies

**Key Goal:** Develop implementation strategies that are actionable, built through consensus, and adaptable to evolving conditions and needs.

## 8. Final Report

**Key Goal:** Create a report that is accessible, understandable, and will be used by planners, policymakers, and residents for years to come.



# SUBMIT QUESTIONS AND COMMENTS TO:

Website: [publicinput.com/nctcogEDKR](https://publicinput.com/nctcogEDKR)

Email: [nctcogEDKR@PublicInput.com](mailto:nctcogEDKR@PublicInput.com)

Participate by Phone: Dial 855-925-2801. Enter meeting code: 4816

1. Leave Voicemail: Press \*2 to leave a message.
2. Speak Live During Meeting: Press \*3 to enter queue.

Mute computer speakers when your speaking time begins.  
State your name and city/organization/affiliation.

Fax: 817-640-3028

Mail: P.O. Box 5888, Arlington, TX 76005-5888

To request hard copies of presentation materials, call or email.

# General Discussion Questions

1. What are the biggest Mobility needs in your community?
2. Are there any specific groups in your community whose needs aren't being met?
3. What is one change that would improve your daily transit experience?



# NEXT STEPS

## Phase 1:

- Compile Feedback from Public Engagement
- Begin Needs Assessment (3-6 months)

## Phase 2:

- Scenario Development
- Scenario Evaluation



# Contact

Shannon Stevenson  
Senior Program Manager  
NCTCOG  
[sstevenson@nctcog.org](mailto:sstevenson@nctcog.org)

Andrew Pagano  
Senior Planner  
NCTCOG  
[apagano@nctcog.org](mailto:apagano@nctcog.org)

Michael Makris  
Transportation Planner  
NCTCOG  
[mmakris@nctcog.org](mailto:mmakris@nctcog.org)

Rebekah Gongora  
Communications Manager  
NCTCOG  
[rgongora@nctcog.org](mailto:rgongora@nctcog.org)

Ezra Pratt  
Transportation Planner  
NCTCOG  
[epratt@nctcog.org](mailto:epratt@nctcog.org)

Transit Study Websites  
[www.nctcog.org/transitstudies](http://www.nctcog.org/transitstudies)

