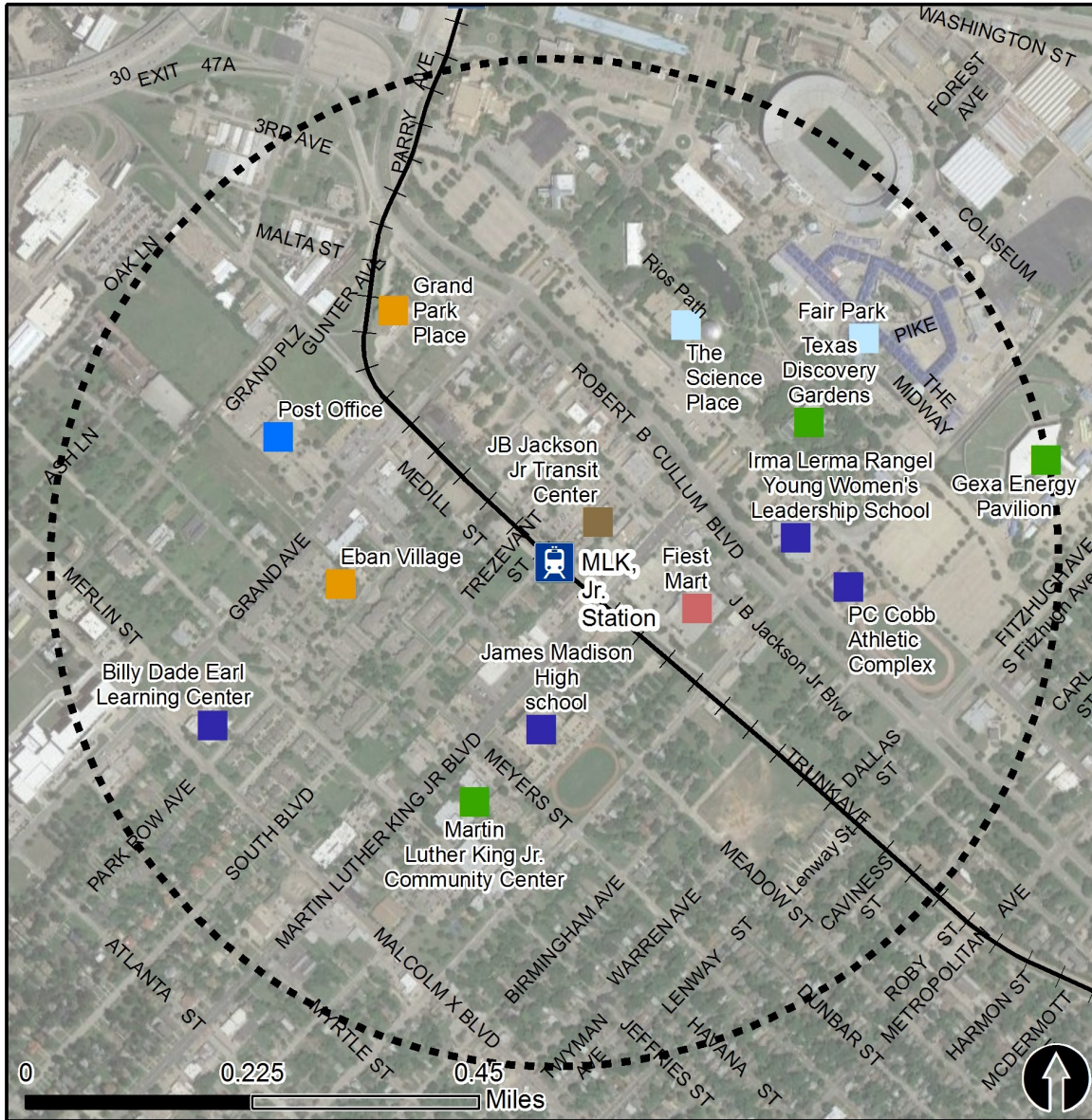


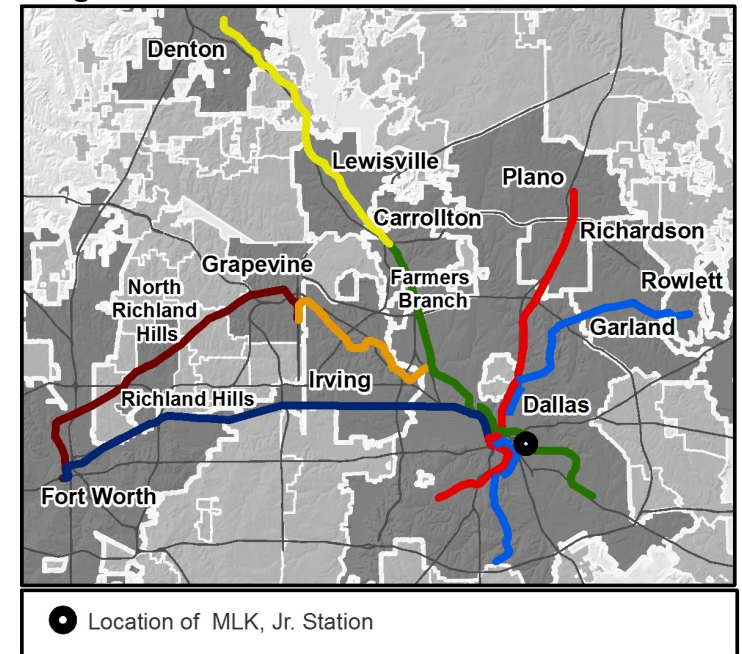
# Rail Station Fact Sheet – MLK, Jr. Station



## Station Overview

MLK, Jr. Station is located at Martin Luther King, Jr. Boulevard and Trunk Avenue in Dallas, two blocks southwest of Fair Park and adjacent to the J.B. Jackson Jr. Transit Center. The station opened in 2009 and is served by the DART Rail Green Line.

## Regional Rail Transit Lines



0.5 Mile  
Station Buffer




Rail Stations



Rail Lines

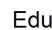
### Key Developments

 Cultural

 Government

 Multi-Family

 Retail

 Education

 Transportation

 Recreation

# Rail Station Fact Sheet – MLK, Jr. Station



## Station Characteristics<sup>1</sup>

Address	1412 S. Trunk Avenue
City	Dallas
Agency	Dallas Area Rapid Transit
Rail Line(s)	Green Line
Corridor	Southeast (SE)
Year Opened	2009
Park & Ride Spaces	200

## Ridership<sup>1</sup>

2015 Avg. Weekday	1,013
2015 Avg. Saturday	961
2015 Avg. Sunday	525

## 2014 On-Board Transit Survey: Access Mode to Station<sup>2</sup>

Bike	1.0%
Drive Alone	1.2%
Carpool	0.0%
Walk	72.3%
Drop Off	16.4%
Other	0.6%
Transit Transfer	8.5%

## Station Area Plans and Studies

Title	forwardDallas! Comp Plan Amendment: Martin Luther King, Jr. Station Area Plan
Publisher	City of Dallas
Year	2013
Web Location	<a href="http://dallascityhall.com/departments/pnv/strategic-planning/Pages/forward-dallas.aspx">http://dallascityhall.com/departments/pnv/strategic-planning/Pages/forward-dallas.aspx</a>

## Station Area Characteristics (1/2 mile radius)

### Demographics<sup>3</sup>

Total Population	5,039
Population Density (pop/sq. mile)	2,503
Average Median Age	42
Average Median Income	\$24,662.00

### Housing<sup>3</sup>

Total Housing Units	2,619
Housing Density (units/sq. mile)	1,301
Percent Occupied	79%
Percent Owner-Occupied	35%
Percent Renter-Occupied	65%

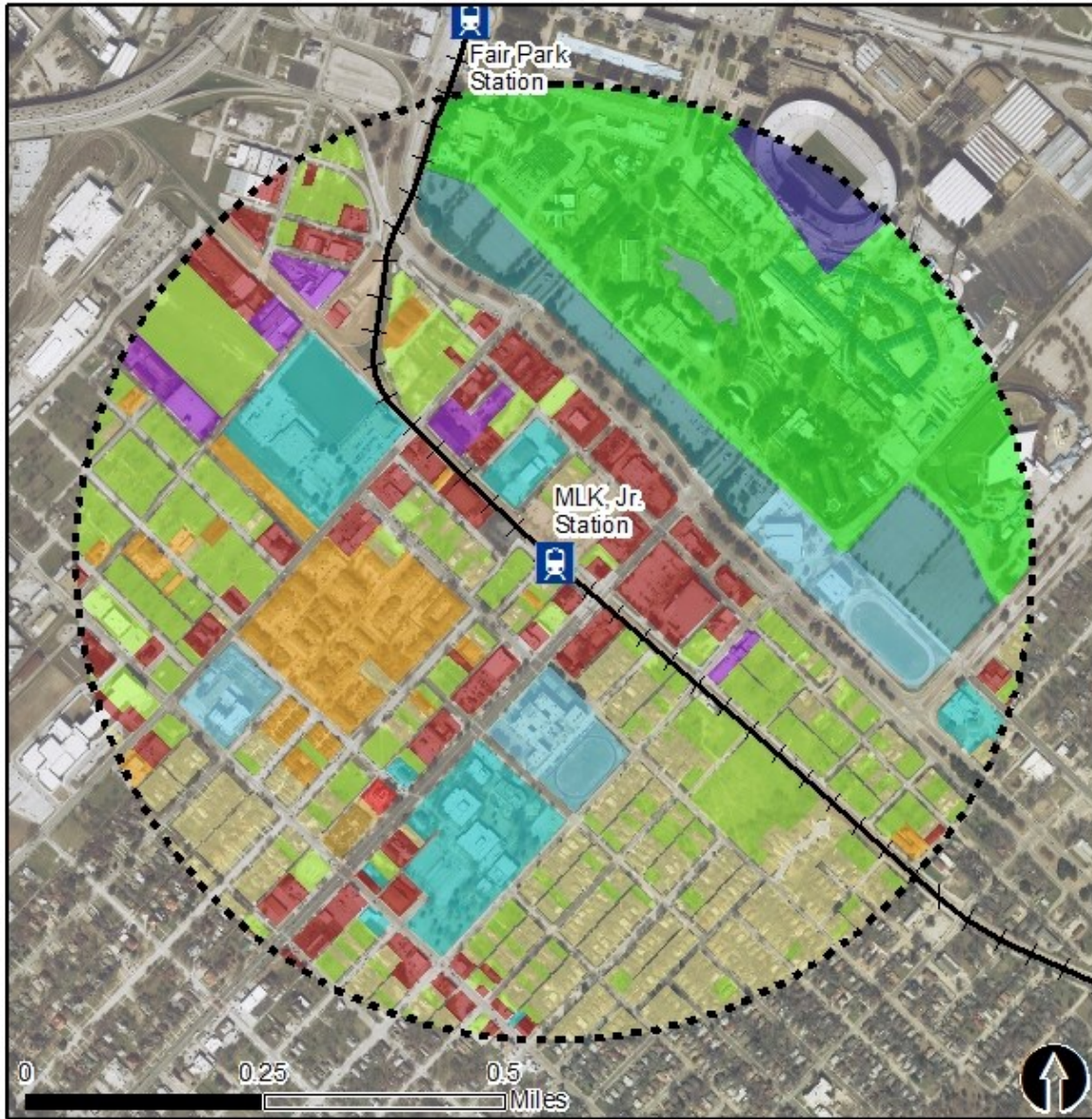
### Commute To Work<sup>3</sup>

Percent Automobile	75.8%
Percent Drive Alone	63.8%
Percent Carpool	12.1%
Percent Transit	19.5%
Percent Bike	0.0%
Percent Walk	2.6%
Percent Other	1.1%
Percent Work from Home	1.0%
Percent Zero-Vehicle Households	30.7%

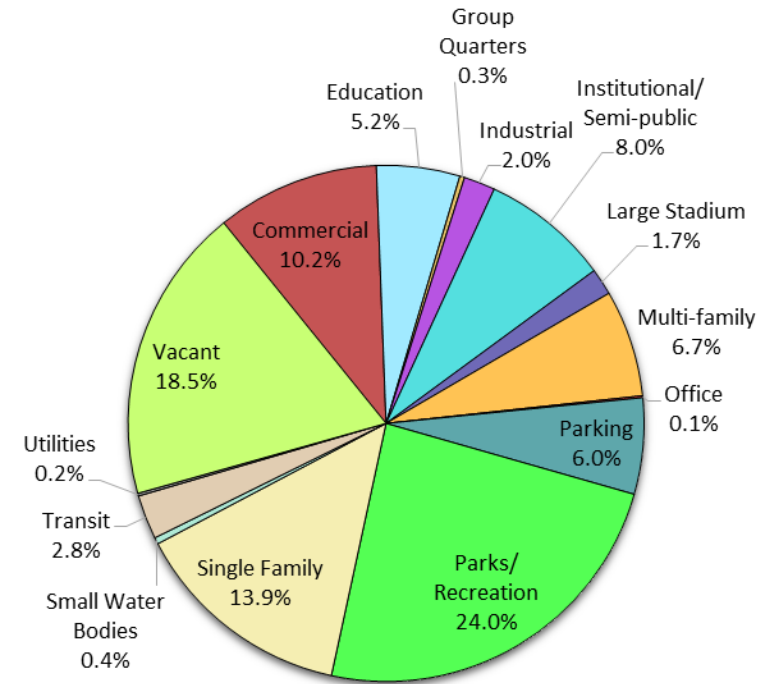
### Traffic Survey Zone 2017 Employment Forecast<sup>2</sup>

Total Jobs	3,471
Job Density (jobs/sq. mile)	1,859



# Land Use (2016) – MLK, Jr. Station



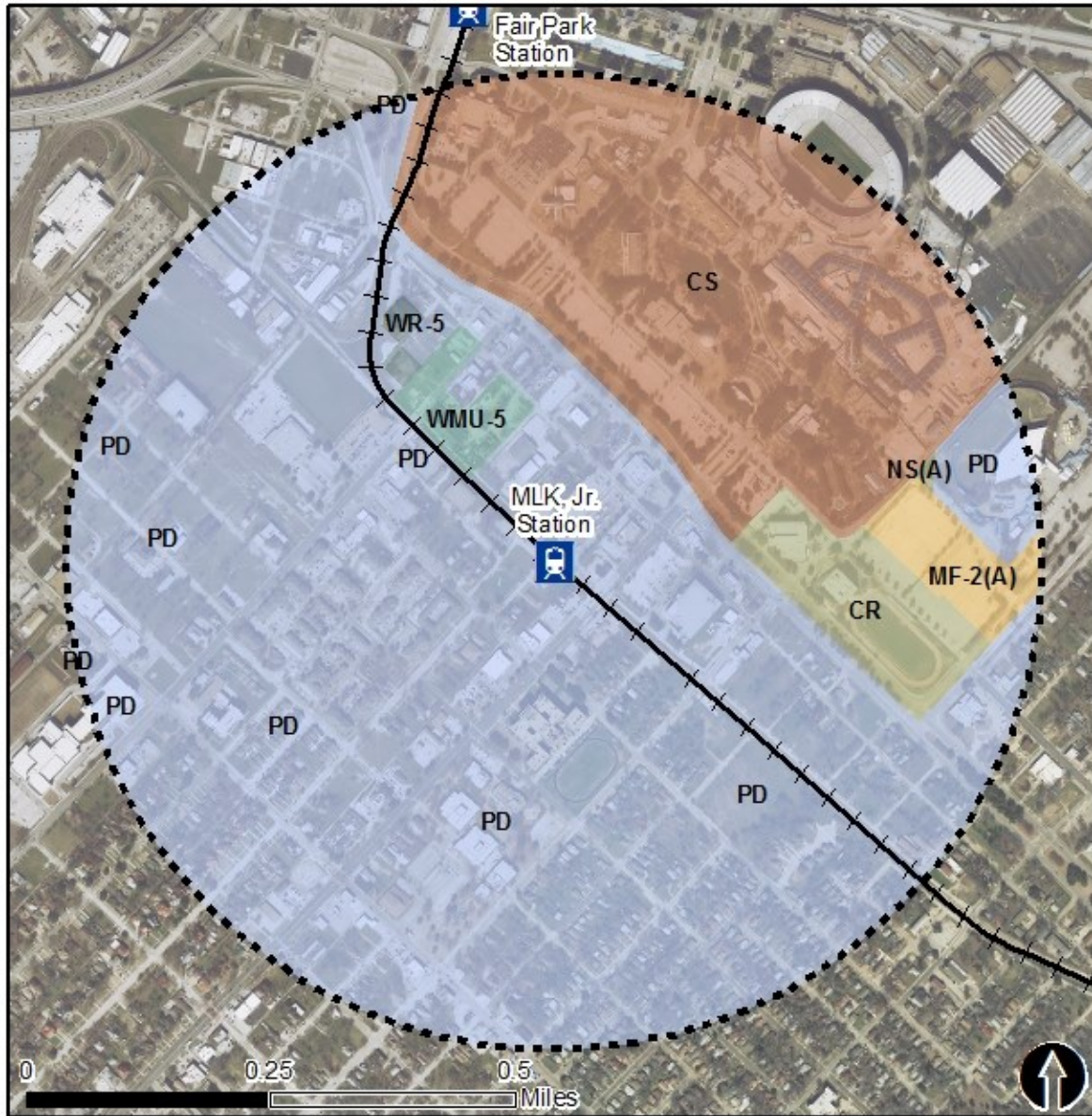
## Land Use Percentages



 0.5 Mile Station Buffer

 Rail Stations  Rail Alignment

# Zoning (2016) – MLK, Jr. Station



## Zoning Districts

- PD – Planned Development
- CS – Commercial Service
- CR – Commercial Retail
- NS(A) – Neighborhood Service
- MF-2(A) – Multi-family
- WR-5 – Walkable Urban Residential
- WMU-5 – Walkable Urban Mixed-Use

For more information on zoning, please visit the City of Dallas Zoning website at:

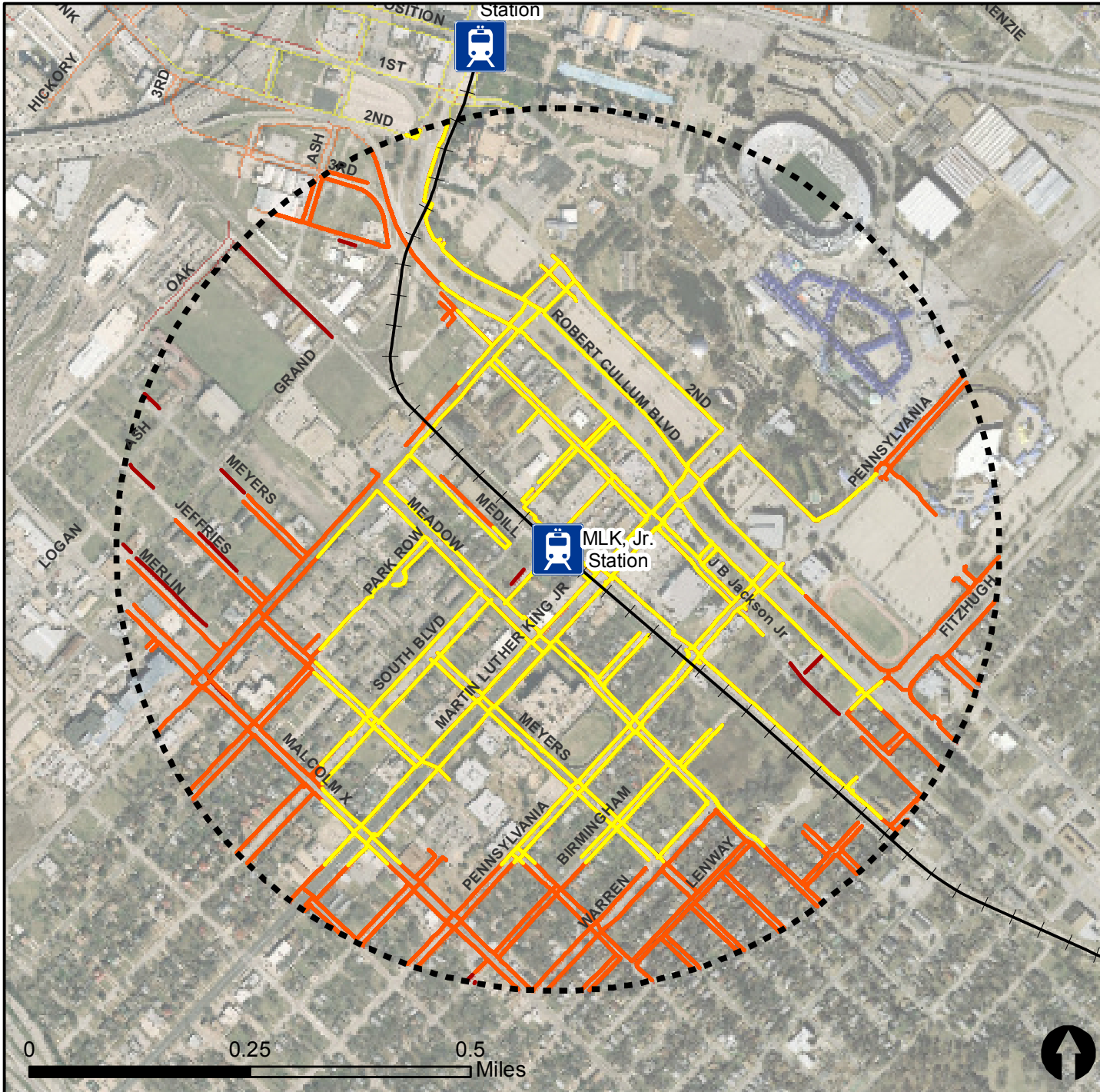
<http://gis.dallascityhall.com/zoningweb/>





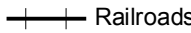



Rail Stations + Rail Lines

# Pedestrian Routes to Rail - MLK Jr Station

Last Updated: February 2015

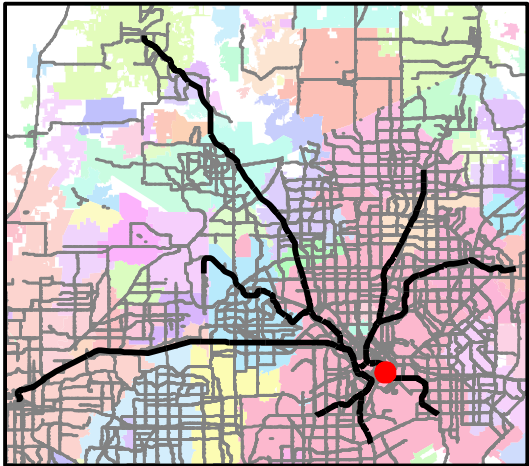


### Legend

-  Rail Stations
-  0.5 Mile Station Buffer
-  Railroads
-  Existing sidewalk facilities within a 0.5 mile walk distance
-  Existing sidewalk facilities greater than a 0.5 mile walk distance
-  Existing sidewalk facilities that are disconnected due to a gap in the network

### Project Overview

The Pedestrian Routes to Rail study identifies all existing pedestrian facilities within a half-mile radius of existing light rail and commuter rail stations in the Dallas-Fort Worth region based on 2014 data. ArcGIS Network Analyst tool was used to identify continuous facilities that are less than or greater than a half-mile actual walking distance to a station. The maps also reflect existing facilities that are disconnected due to gaps or other barriers not allowing a continuous pedestrian route to a station. The maps do not reflect the condition or ADA compliance of the existing infrastructure. More information on the Routes to Rail study and methodology is available at: [nctcog.org/RoutesToRail](http://nctcog.org/RoutesToRail)

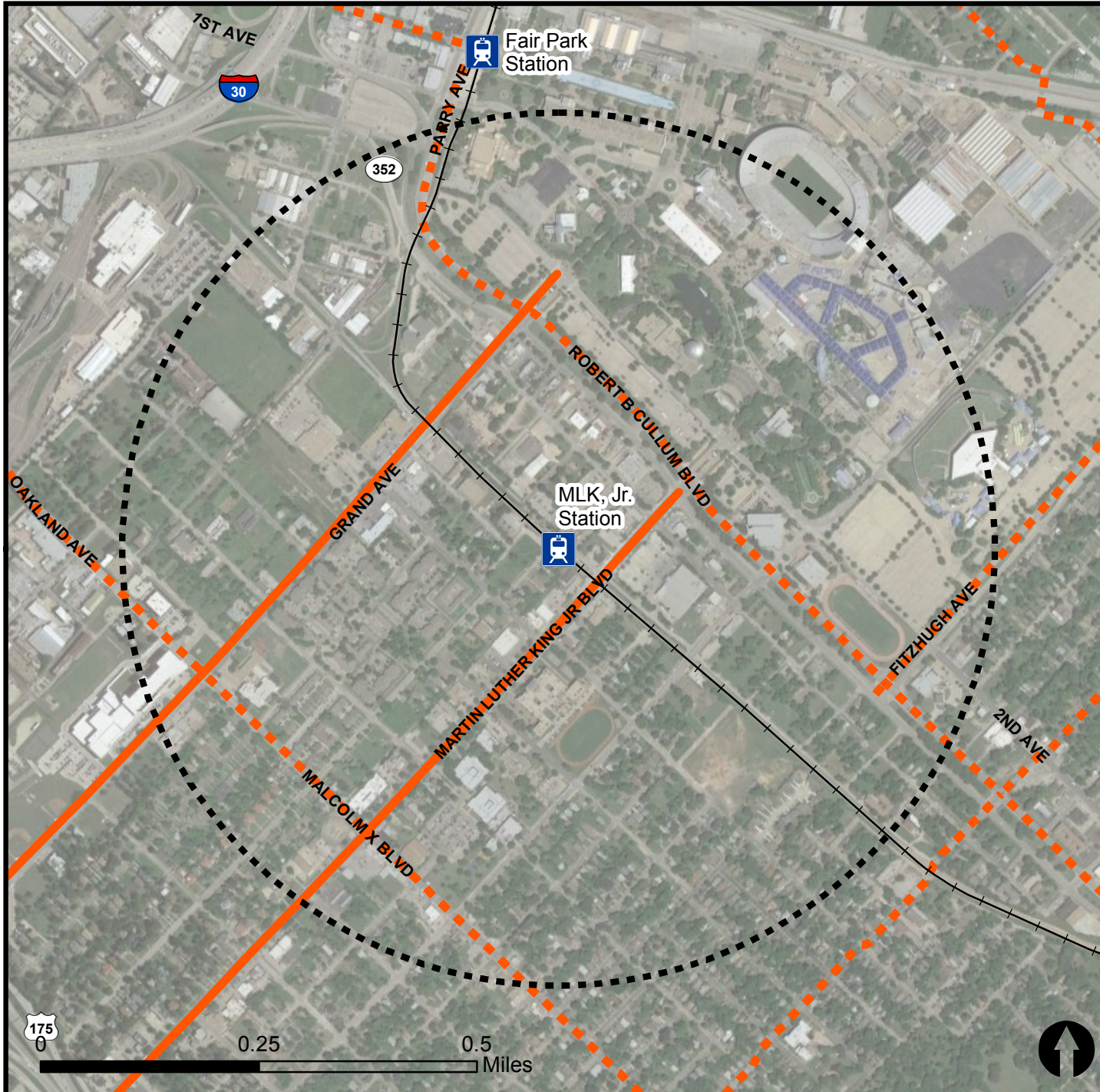


# Bicycle Routes to Rail - MLK, Jr. Station

Last Updated: October 2016



North Central Texas  
Council of Governments



## Legend

- Rail Stations
- 0.5 Mile Station Buffer
- Rail Lines
- On-Street Bikeway, Existing
- On-Street Bikeway, Planned
- 2040 Veloweb
- Off-Street Path, Existing
- Off-Street Path, Planned

## Project Overview

The Bicycle Routes to Rail study identifies all existing and planned bikeways in proximity to existing or under-construction light rail and commuter rail stations in the Dallas / Fort Worth region based on 2016 data. The maps reflect off-street paths (trails) and streets designated by local adopted master plans for dedicated bikeways (e.g. bike lanes, cycle tracks) located on the street. In accordance with the Texas Transportation Code, bicyclists have a right to the road. As such, the map does not reflect other roadways around the station that may have signed bike routes or by state law may be used by bicyclists. More information about the Routes to Rail study and methodology is available at:

[nctcog.org/RoutesToRail](http://nctcog.org/RoutesToRail)

