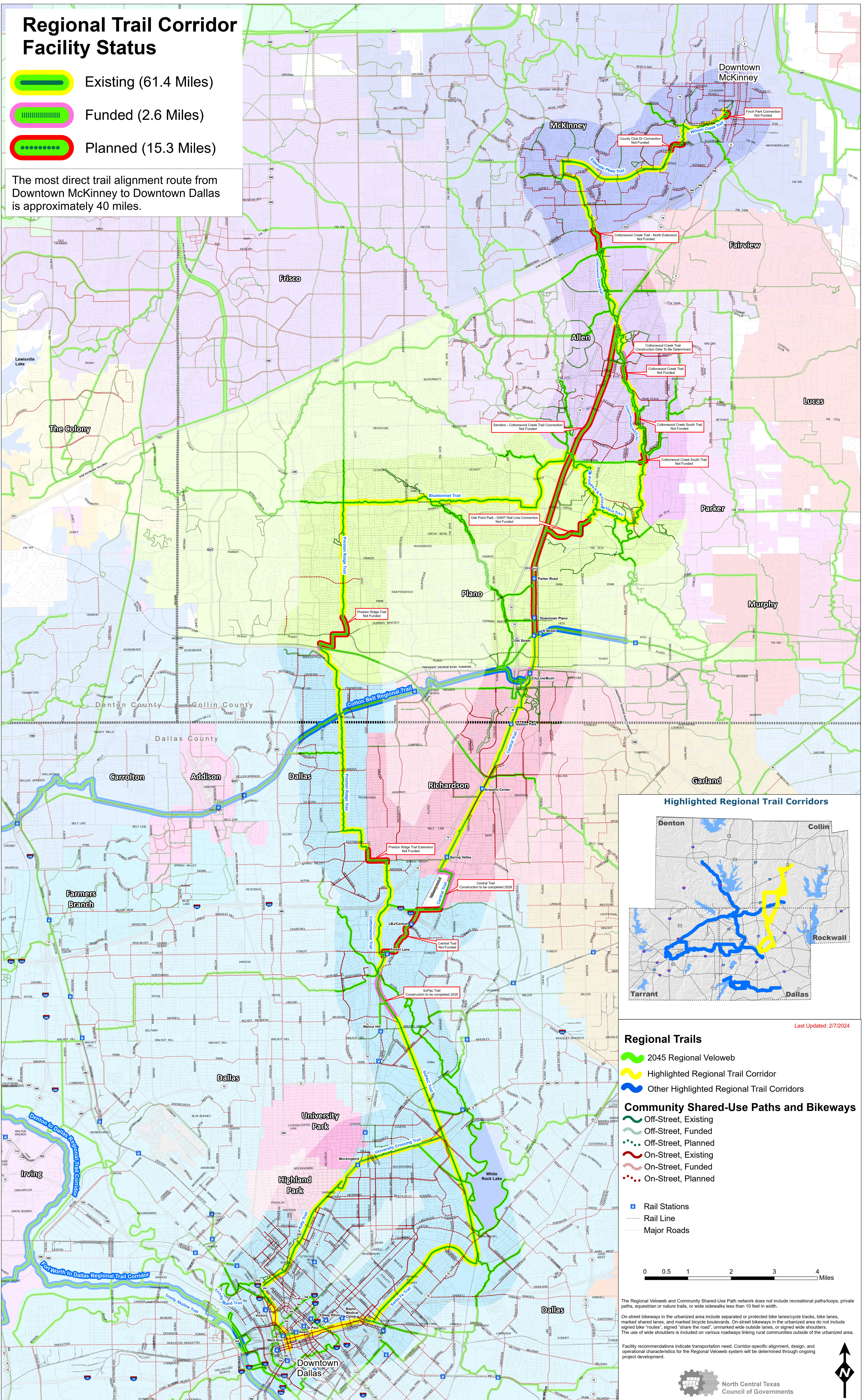


Dallas to McKinney Regional Trail

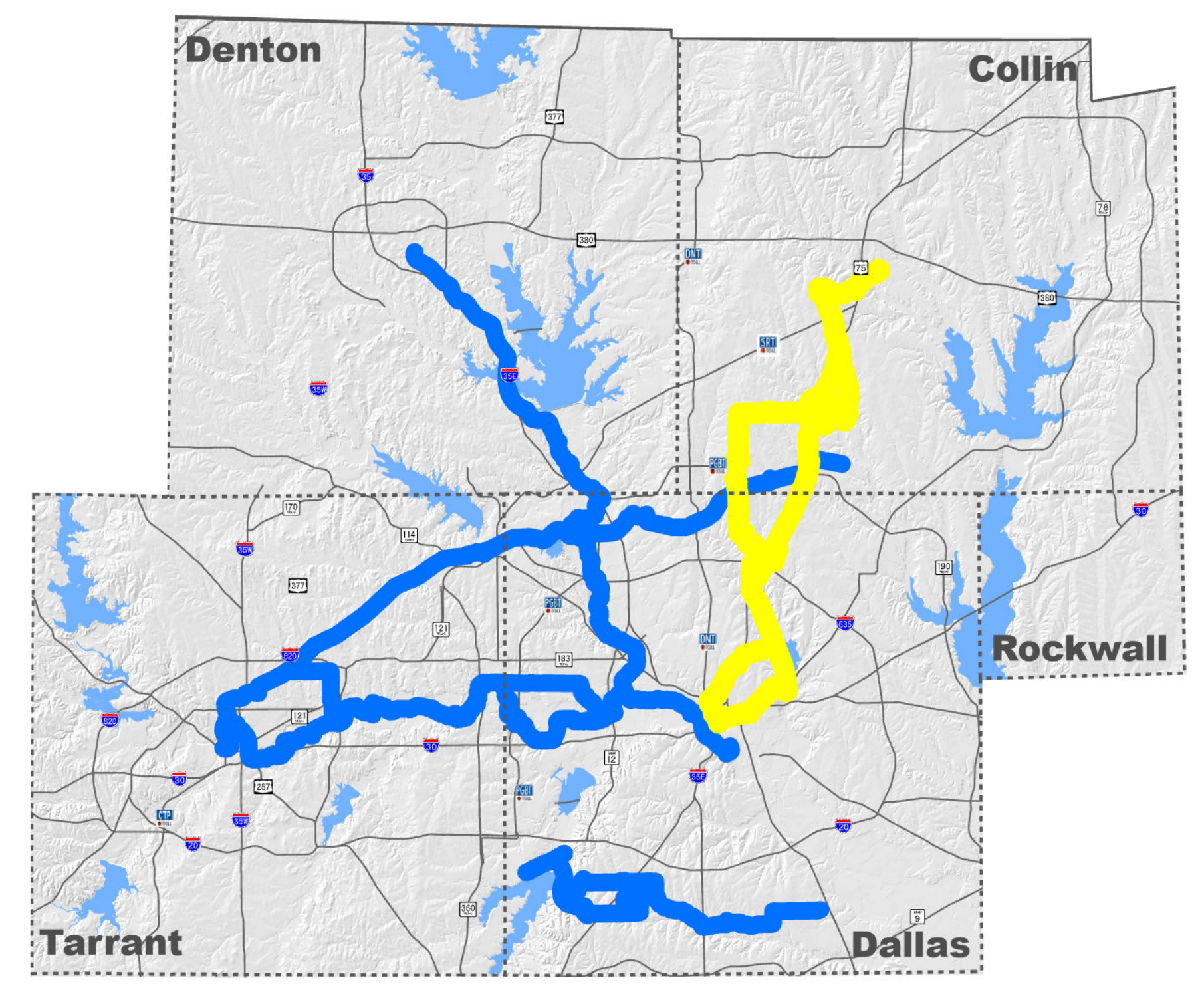
Regional Trail Corridor Facility Status

-  Existing (61.4 Miles)
-  Funded (2.6 Miles)
-  Planned (15.3 Miles)

The most direct trail alignment route from Downtown McKinney to Downtown Dallas is approximately 40 miles.


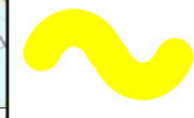



Highlighted Regional Trail Corridors



Last Updated: 2/7/2024

Regional Trails

-  2045 Regional Veloweb
-  Highlighted Regional Trail Corridor
-  Other Highlighted Regional Trail Corridors

Community Shared-Use Paths and Bikeways

-  Off-Street, Existing
-  Off-Street, Funded
-  Off-Street, Planned
-  On-Street, Existing
-  On-Street, Funded
-  On-Street, Planned

-  Rail Stations
-  Rail Line
-  Major Roads



The Regional Veloweb and Community Shared-Use Path network does not include recreational paths/loops, private paths, equestrian or nature trails, or wide sidewalks less than 10 feet in width.

On-street bikeways in the urbanized area include separated or protected bike lanes/cycle tracks, bike lanes, marked shared lanes, and marked bicycle boulevards. On-street bikeways in the urbanized area do not include signed bike "routes", signed "share the road", unmarked wide outside lanes, or signed wide shoulders. The use of wide shoulders is included on various roadways linking rural communities outside of the urbanized area.

Facility recommendations indicate transportation need. Corridor-specific alignment, design, and operational characteristics for the Regional Veloweb system will be determined through ongoing project development.

