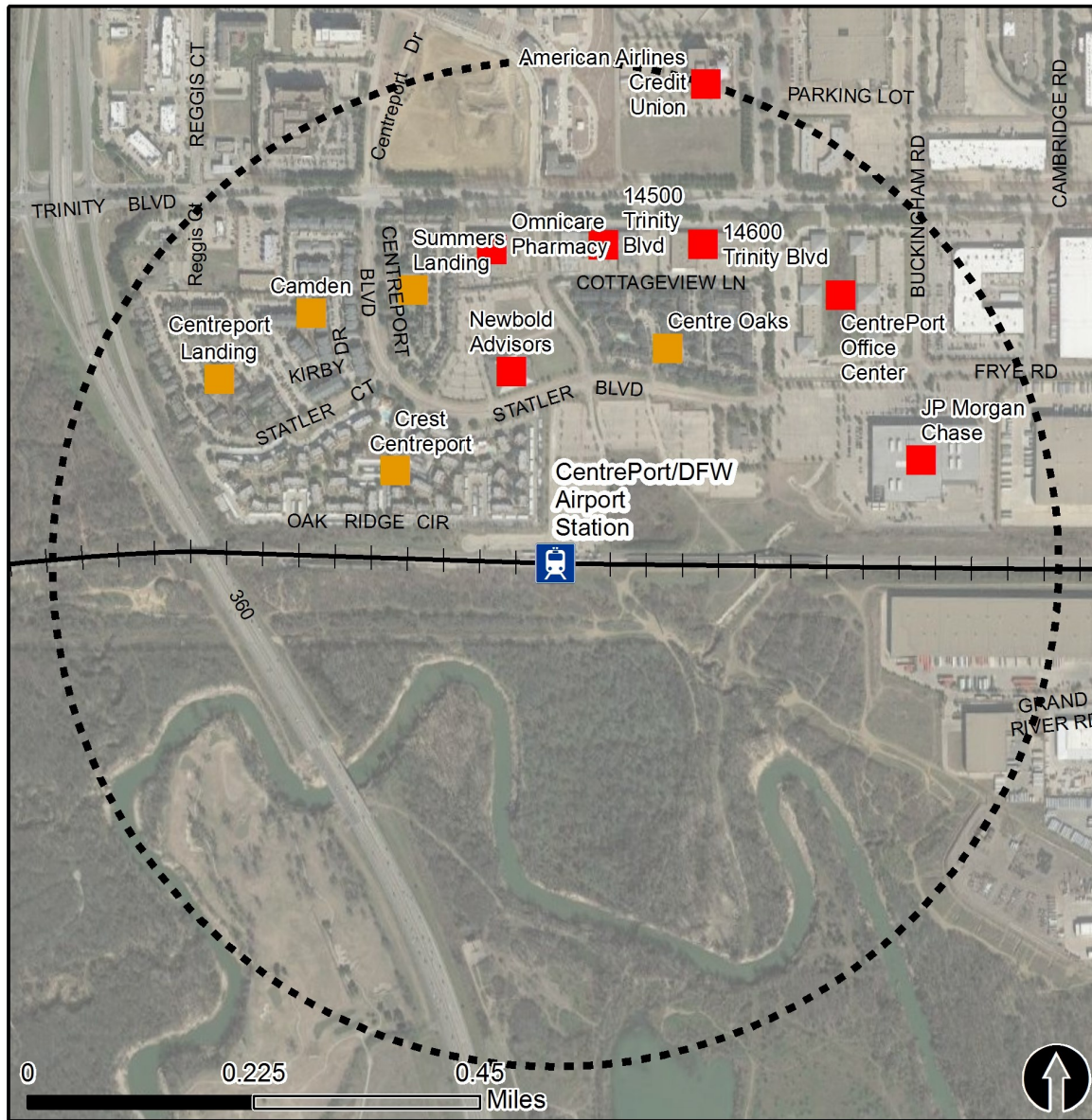




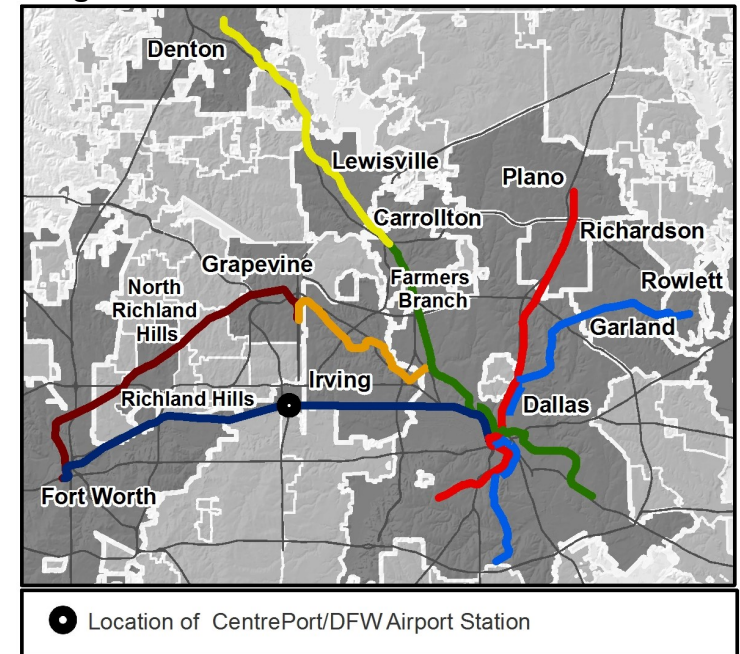
Rail Station Fact Sheet – CentrePort/DFW Airport Station



Station Overview

CentrePort/DFW Airport Station is located by Statler Boulevard at Breezewood Drive in Fort Worth. Free shuttles connect the station to DFW International Airport via the Remote South buses. The station opened in 2000 and is served by the Trinity Railway Express (TRE) commuter rail.

Regional Rail Transit Lines



Rail Stations



Key Developments



Multi-Family



Office

Rail Station Fact Sheet – CentrePort/DFW Airport Station



North Central Texas
Council of Governments

Station Characteristics¹

Address	14470 Statler Boulevard
City	Fort Worth
Agency	Trinity Railway Express
Rail Line(s)	TRE
Corridor	Trinity Railway Express
Year Opened	2000
Park & Ride Spaces	1,001

Ridership¹

2015 Avg. Weekday	1,090
2015 Avg. Saturday	340
2015 Avg. Sunday	N/A

2014 On-Board Transit Survey: Access Mode to Station²

Bike	0.3%
Drive Alone	34.1%
Carpool	2.5%
Walk	15.1%
Drop Off	23.3%
Other	0.6%
Transit Transfer	24.2%

Station Area Plans and Studies

Title	
Publisher	
Year	
Web Location	

Station Area Characteristics (1/2 mile radius)

Demographics³

Total Population	11,177
Population Density (pop/sq. mile)	945
Average Median Age	32
Average Median Income	\$46,245.17

Housing³

Total Housing Units	6,674
Housing Density (units/sq. mile)	564
Percent Occupied	91%
Percent Owner-Occupied	10%
Percent Renter-Occupied	90%

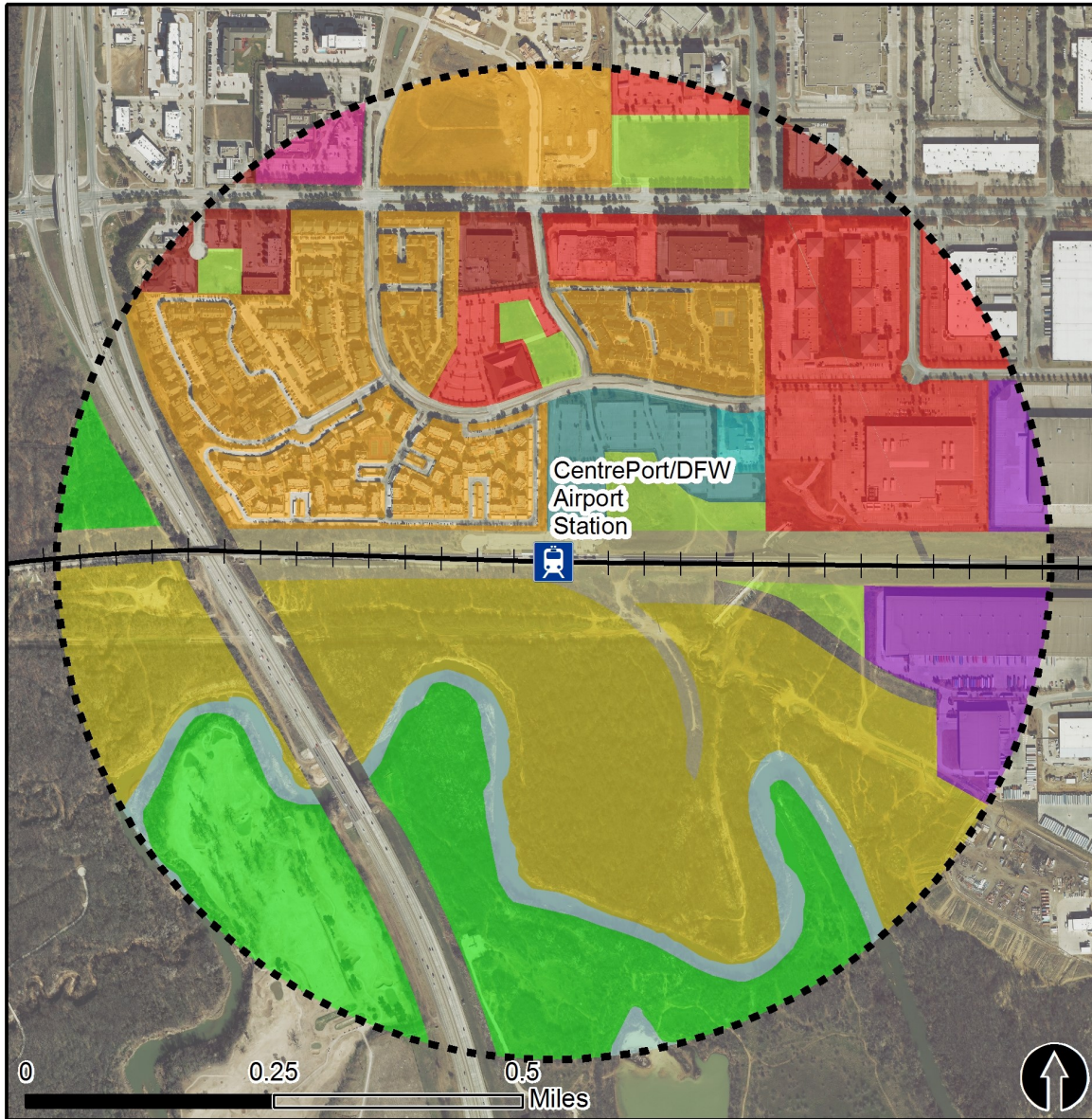
Commute To Work³

Percent Automobile	92.4%
Percent Drive Alone	86.4%
Percent Carpool	6.1%
Percent Transit	3.5%
Percent Bike	0.4%
Percent Walk	1.5%
Percent Other	0.7%
Percent Work from Home	1.4%
Percent Zero-Vehicle Households	4.5%

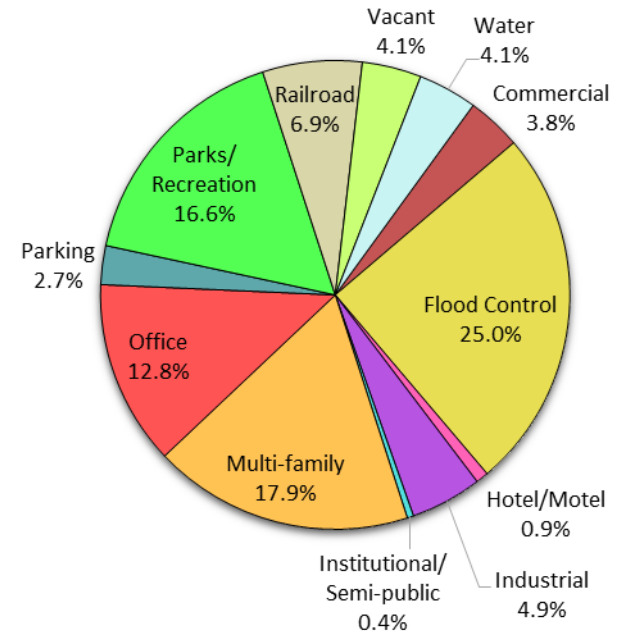
Traffic Survey Zone 2017 Employment Forecast²

Total Jobs	28,734
Job Density (jobs/sq. mile)	3,612

Land Use (2016) – CentrePort/DFW Airport Station



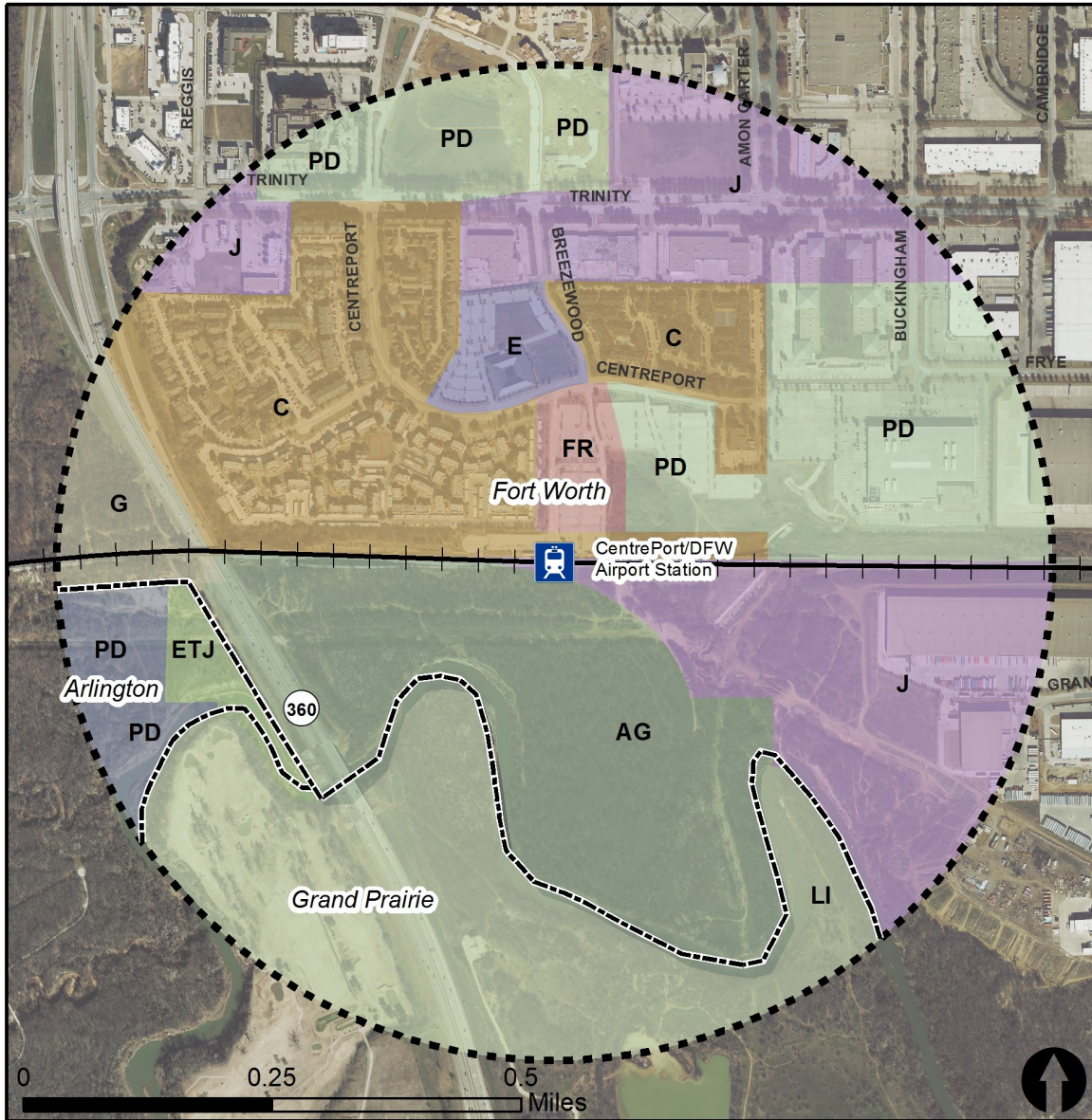
Land Use Percentages



0.5 Mile Station Buffer

Rail Stations Rail Lines

Zoning (2016) – CentrePort/DFW Airport Station



Zoning Districts

Arlington (2014)

- PD – Planned Development
- ETJ – Extra Territorial Jurisdiction

Fort Worth (2014)

- AG – Agricultural
- C – Medium Density Multi-family
- E – Neighborhood Commercial
- ETJ – Extraterritorial Jurisdiction
- FR – General Commercial Restricted
- G – Intensive Commercial
- J – Medium Industrial
- PD – Planned Development

Grand Prairie (2011)

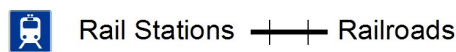
- LI – Light Industrial

For more information on zoning, please visit the City websites at:

Arlington: <http://gis.arlingtontx.gov/mapsonline/>

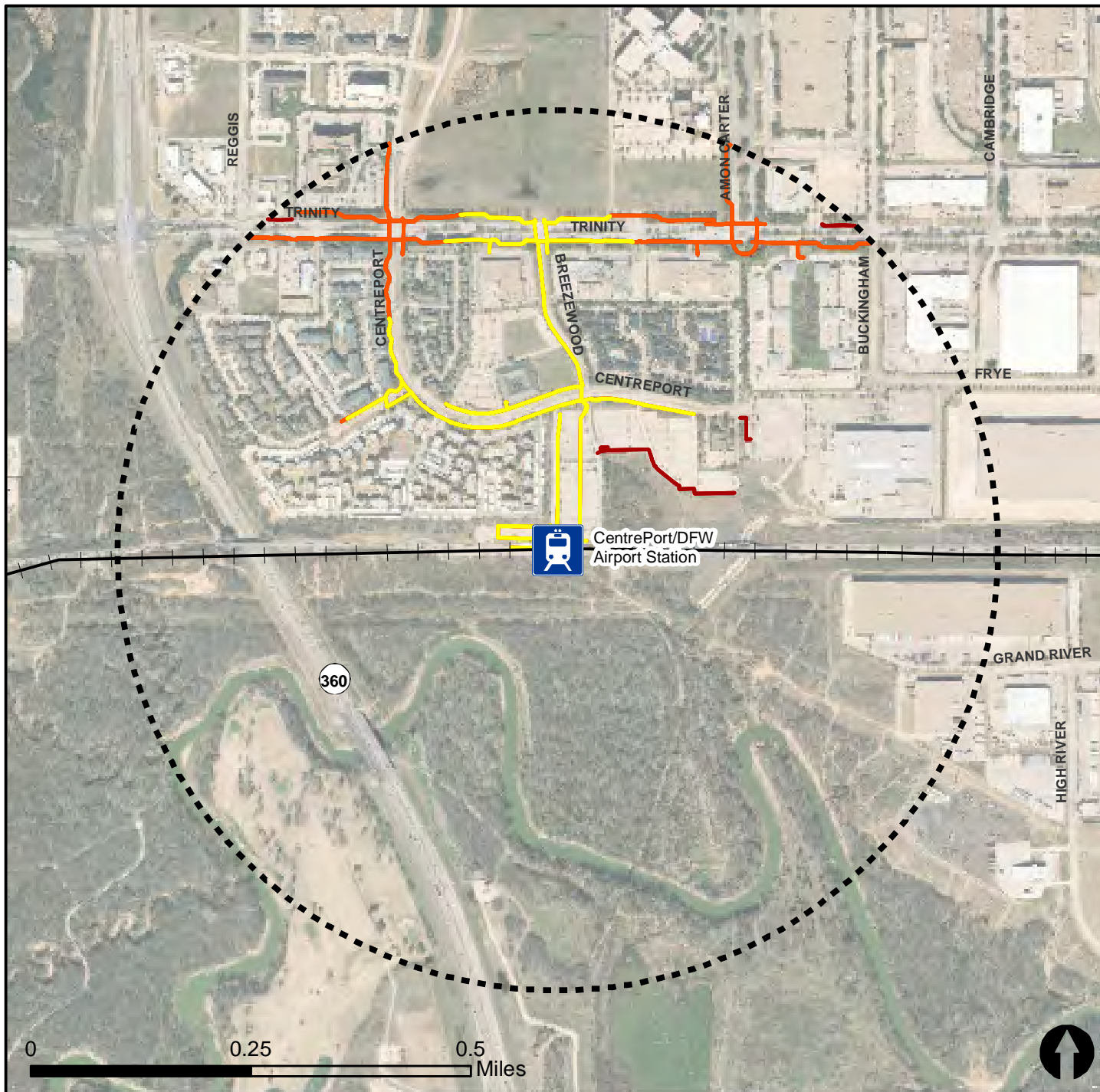
Fort Worth <http://fortworthtexas.gov/planninganddevelopment/zoninginfo.aspx>

Grand Prairie: <http://gis.gptx.org/maps>









Pedestrian Routes to Rail - CentrePort/DFW Station

Last Updated: February 2015

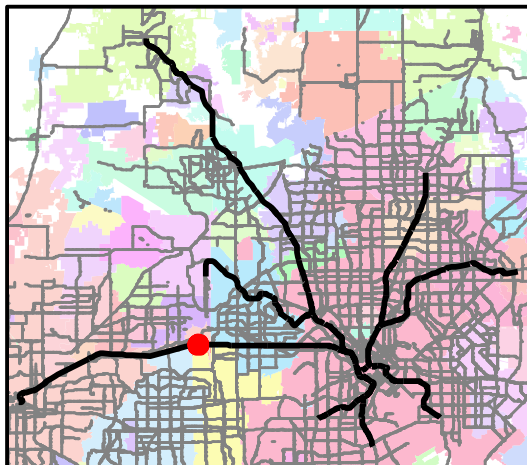


Legend

-  Rail Stations
-  0.5 Mile Station Buffer
-  Railroads
-  Existing sidewalk facilities within a 0.5 mile walk distance
-  Existing sidewalk facilities greater than a 0.5 mile walk distance
-  Existing sidewalk facilities that are disconnected due to a gap in the network

Project Overview

The Pedestrian Routes to Rail study identifies all existing pedestrian facilities within a half-mile radius of existing light rail and commuter rail stations in the Dallas-Fort Worth region based on 2014 data. ArcGIS Network Analyst tool was used to identify continuous facilities that are less than or greater than a half-mile actual walking distance to a station. The maps also reflect existing facilities that are disconnected due to gaps or other barriers not allowing a continuous pedestrian route to a station. The maps do not reflect the condition or ADA compliance of the existing infrastructure. More information on the Routes to Rail study and methodology is available at: nctcog.org/RoutesToRail

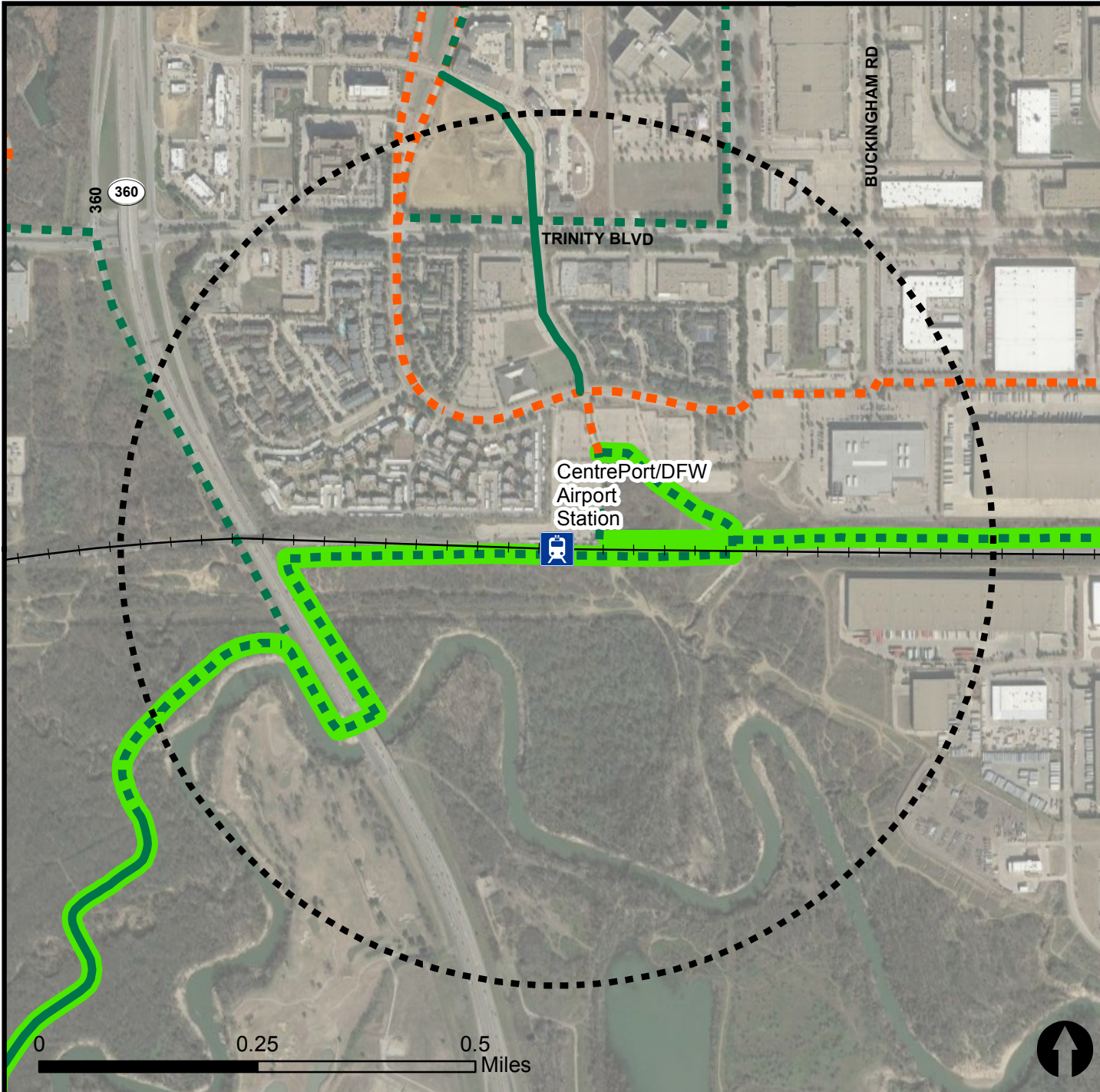


Bicycle Routes to Rail - CentrePort/DFW Airport Station

Last Updated: October 2016



North Central Texas
Council of Governments



Legend

- Rail Stations
- 0.5 Mile Station Buffer
- Rail Lines
- On-Street Bikeway, Existing
- On-Street Bikeway, Planned
- 2040 Veloweb
- Off-Street Path, Existing
- Off-Street Path, Planned

Project Overview

The Bicycle Routes to Rail study identifies all existing and planned bikeways in proximity to existing or under-construction light rail and commuter rail stations in the Dallas / Fort Worth region based on 2016 data. The maps reflect off-street paths (trails) and streets designated by local adopted master plans for dedicated bikeways (e.g. bike lanes, cycle tracks) located on the street. In accordance with the Texas Transportation Code, bicyclists have a right to the road. As such, the map does not reflect other roadways around the station that may have signed bike routes or by state law may be used by bicyclists. More information about the Routes to Rail study and methodology is available at:

nctcog.org/RoutesToRail

