

ILLICIT DISCHARGE DETECTION AND ELIMINATION CASE STUDY

CITY OF GRAND PRAIRIE

MARCH 23, 2021



COMPLAINT

January 6, 2021 around 11:38 am:

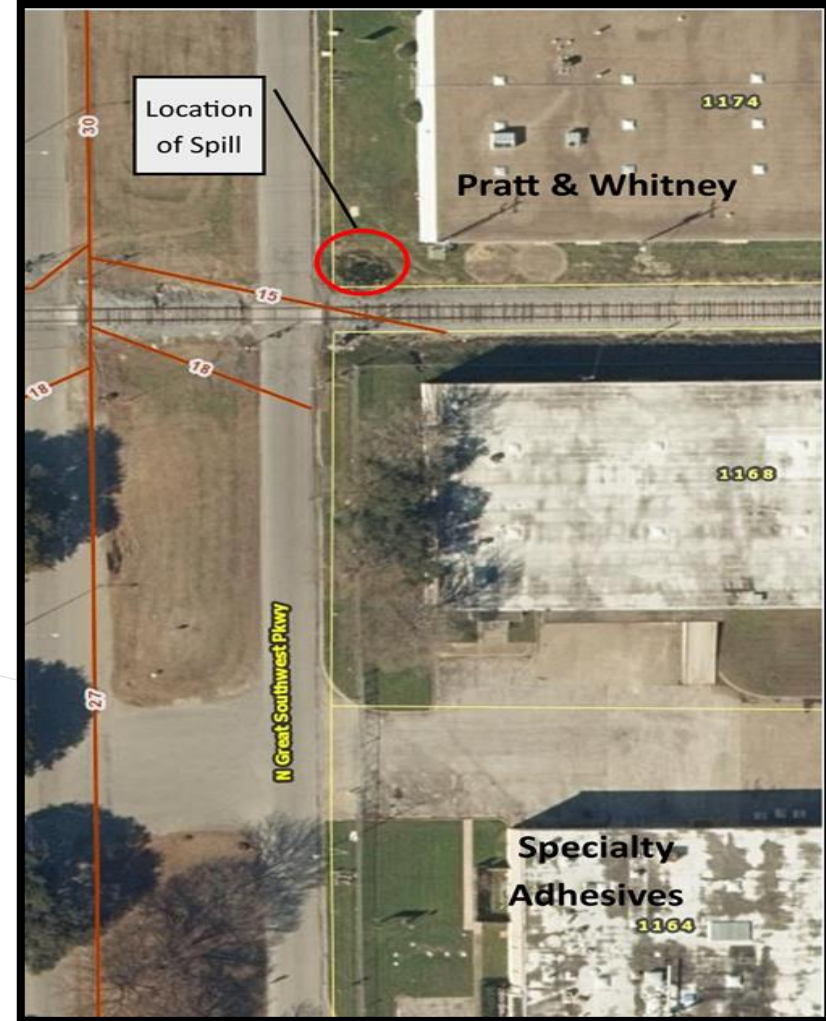
Complaint received- White substance observed in a standing pool of water on the SW corner of the property located at 1174 N Great South West Pkwy.

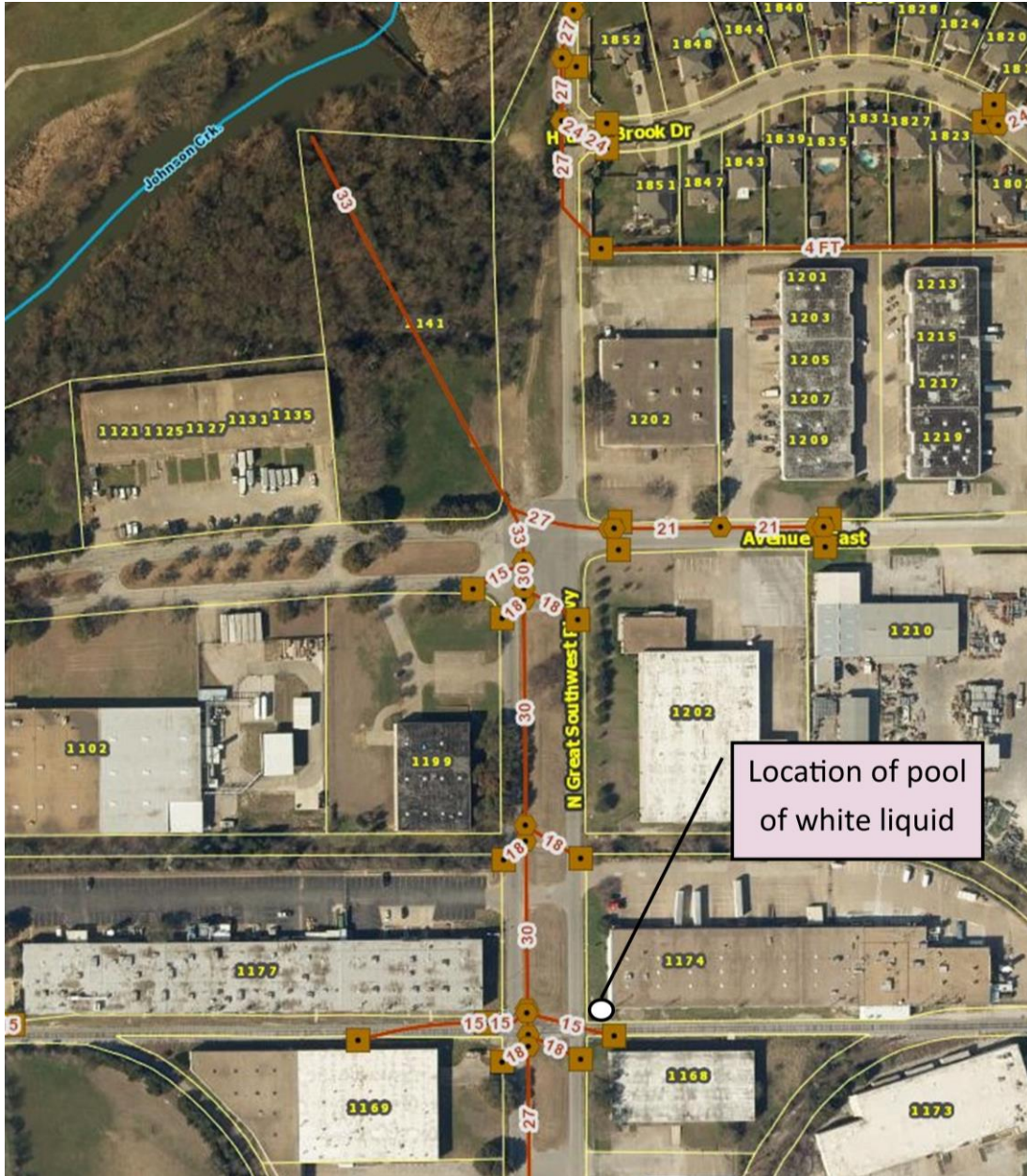




INITIAL THOUGHT:

- The discharge looked very similar to wastewater discharge from nearby business “Specialty Adhesives”, a glue manufacturer which is two buildings down.





SITE INVESTIGATION:

- No storm drain observed at the location of the discharge.
- No material could not have reached pool from Specialty Adhesive via the gutter due to the grade of the railroad track.
- According to storm drain map, no storm drain connection to pool of material from Specialty Adhesives.

RESPONSE:

January 6, 2021: City of Grand Prairie personnel visited the site.

- Shallow standing pool of water.
- Did not overflow to any nearby storm drains.
- Inspected nearby creek (Johnson Creek) for any visible discharge. None was observed.

Revised thought:

- Illegal dumping of abandoned paint cans and recent rain filled depression resulting in water contaminated with paint.
- No obvious responsible party.





RESPONSE:

January 6, 2021: City's Emergency Response contractor (US Ecology) onsite to clean up the white discharge.

RESPONSE CONTINUED..

- January 7, 2021: The discharge was continued to be cleaned by the contractor.
- After approximately 4,000 gallons of discharge was collected, a storm drain was observed.
- A sample of the white discharge was collected and sent to lab for enforcement action.





“THE STORM DRAIN”

- Called City of GP Drainage Dept.
 - Not our storm drain
 - Railroad has their own drainage system along tracks
- Informed Union Pacific Railroad about the clogged storm drain.

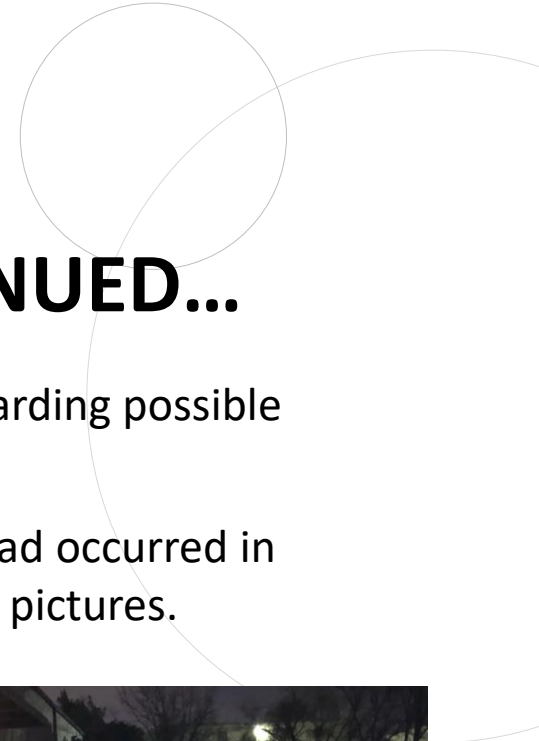




INVESTIGATION

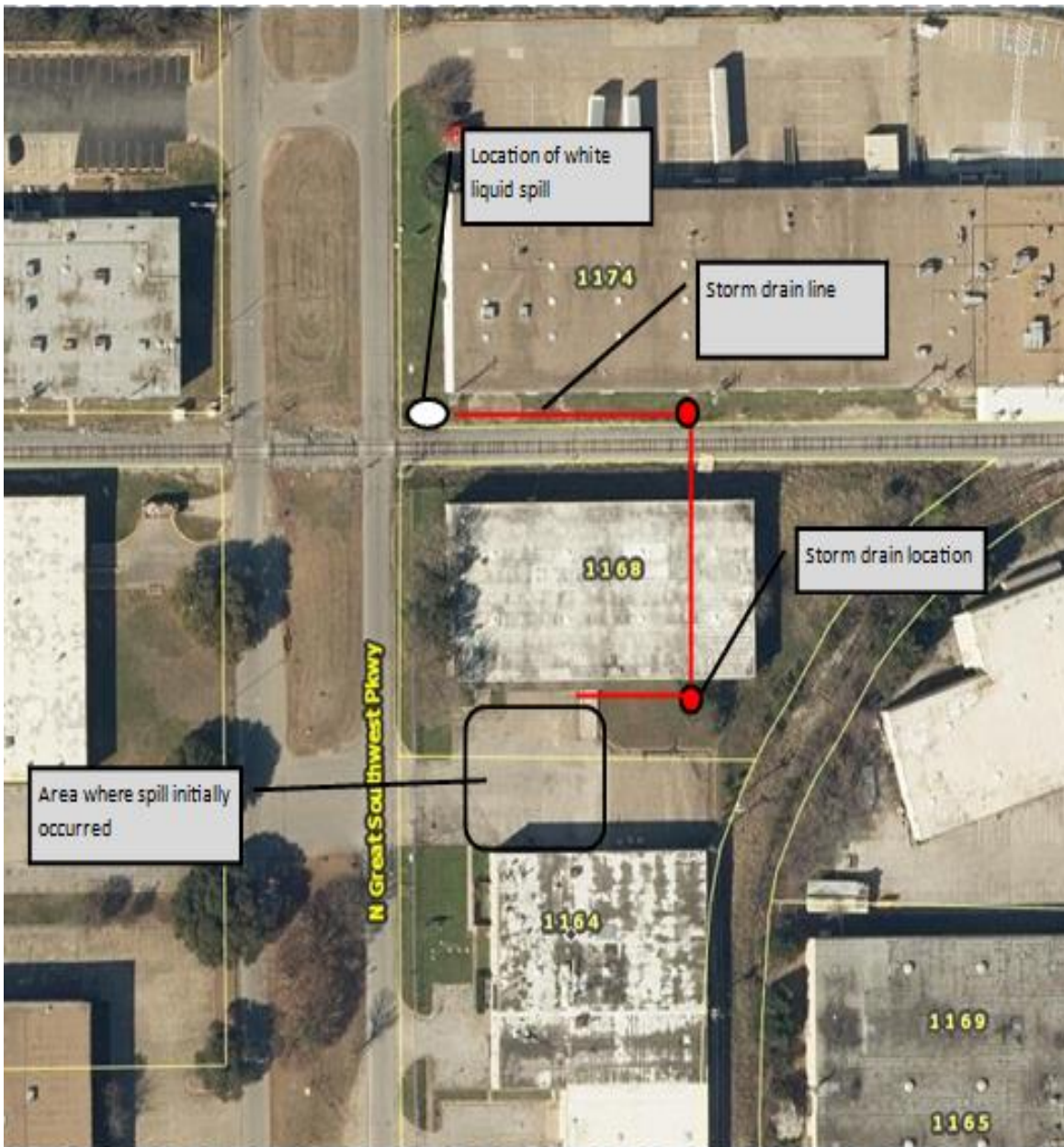
January 7, 2021:

- Inspected the area along the railroad tracks.
- Observed a ditch on east from the location of the discharge. White discharge was observed in the ditch as well.
- Appeared the discharge was flowing from South side of the railroads into the ditch and was flowing towards the storm drain.



INVESTIGATION CONTINUED...

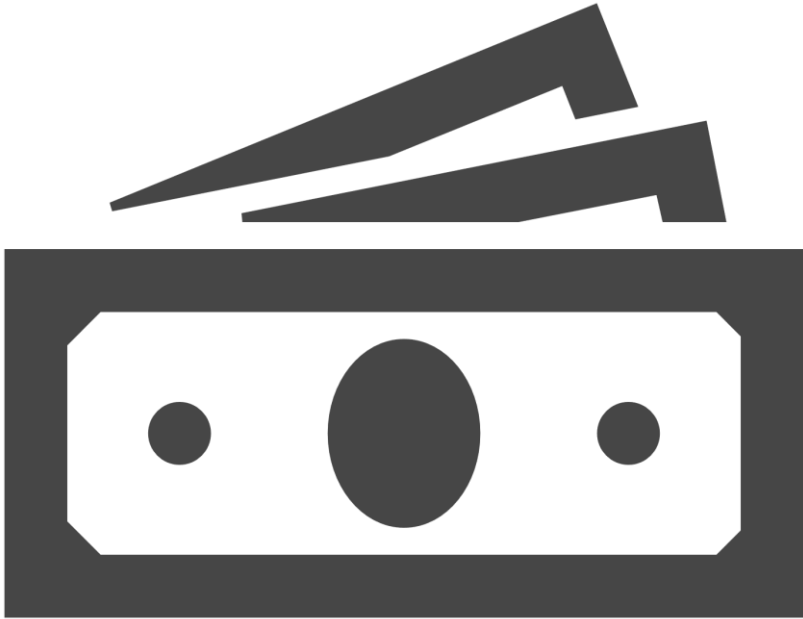
- Interviewed the nearby businesses regarding possible recent spills or system failures.
- Witnesses confirmed sewer overflow had occurred in the early hours of January 4, 2021 with pictures.





RESOLUTION:

- January 18, 2021: Lab results received confirming Polyvinyl Acetate commonly associated with adhesives was found in the sample.
- According to the chemical list submitted with the Wastewater Discharge Permit Application by “Specialty Adhesives”, polyvinyl acetate is used on site.
- The investigation determined that the material originated from Specialty Adhesives located at 1164 N. Great Southwest .
 - ❑ Citation was issued for failure to clean up the spill.
 - ❑ Held responsible for reimbursement for funds incurred during this incident in accordance with City’s Ordinance.



THANK YOU

ANY QUESTIONS??

