

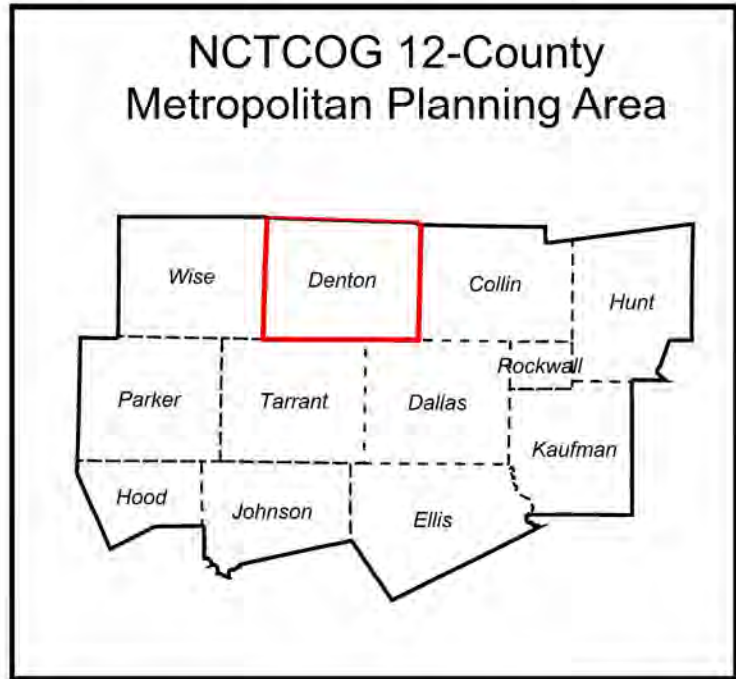
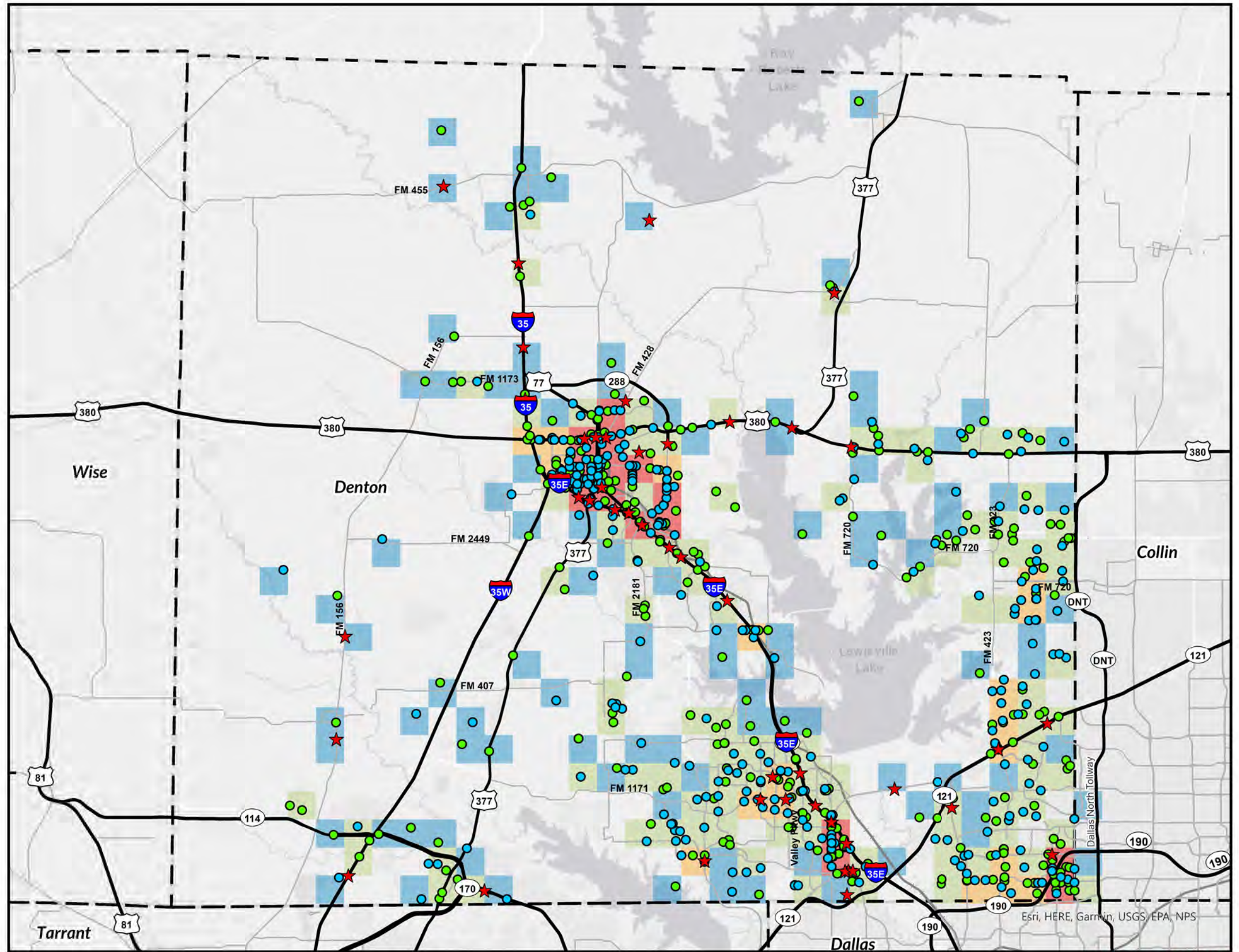
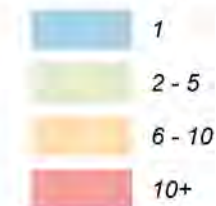
Denton County

Bicycle and Pedestrian Crashes per Square Mile (2018 - 2022)

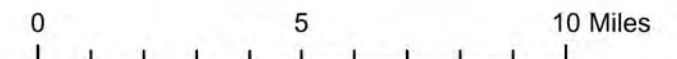
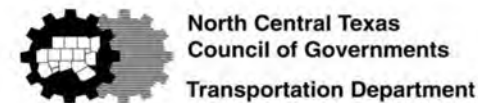
Legend

- ★ Fatal Bicycle or Pedestrian Crash (45)
- Non-Fatal Bicycle Crash (311)
- Non-Fatal Pedestrian Crash (392)
- Highway
- Major Arterial Road
- Passenger Rail Line
- - - Counties

Crashes per Square Mile



- 1.) Source: TxDOT's Crash Records Information System; 2018-2022 data is current as of April 2023. All TxDOT disclaimers apply.
- 2.) Data displayed contains reportable crashes with latitude and longitude information. Additional crashes may have occurred.
- 3.) This data is composed of TxDOT "Reportable Crashes" that occurs or originates on a traffic way, results in injury to or death of any person, or damage to the property of any person to the apparent extent of \$1,000.



Last Updated: 8/8/2023