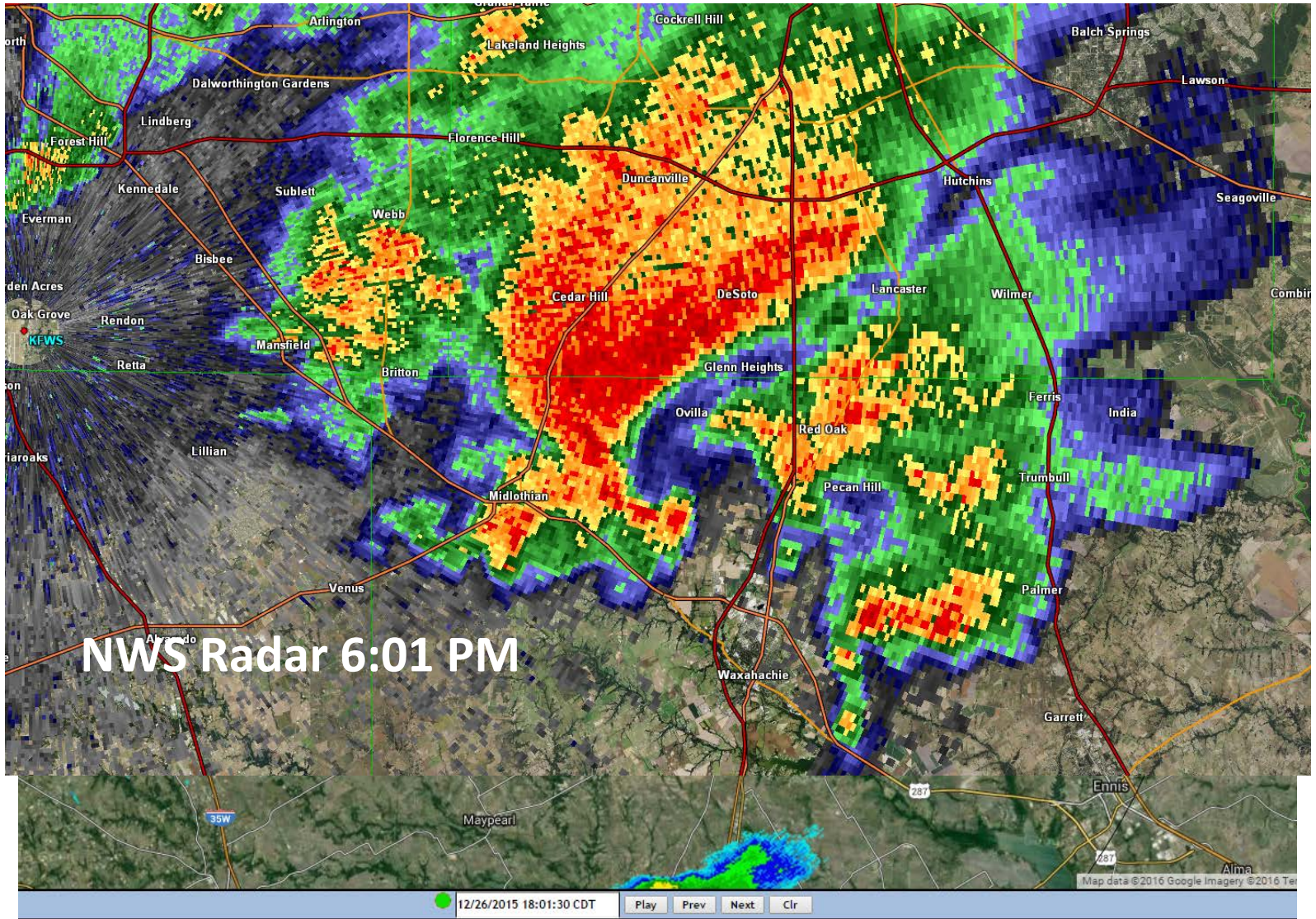


**December 26<sup>th</sup>**  
**CASA Radar Review**



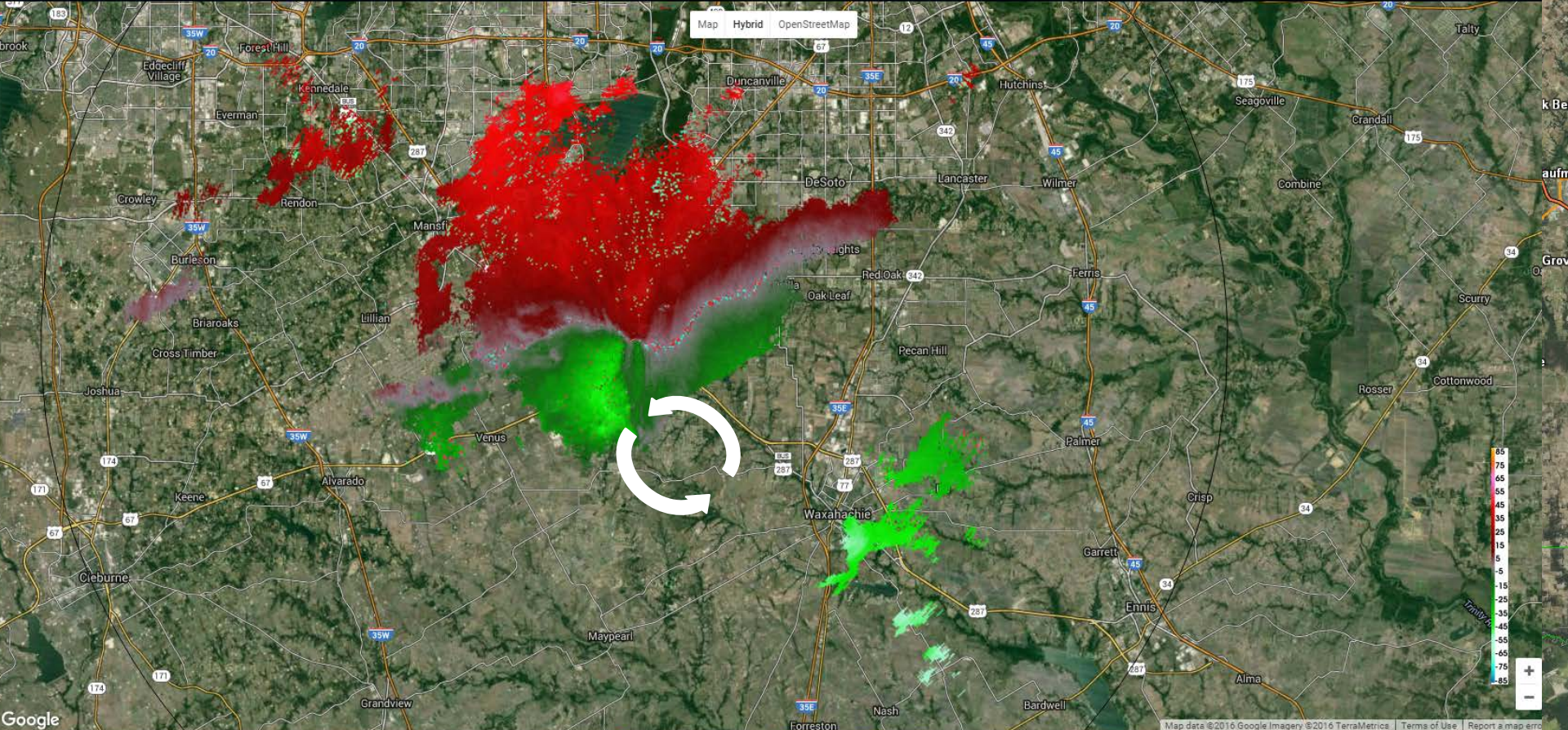
# NWS Radar and CASA Radar are excellent tools, but they are different

- NWS Radar: Used to identify areas where hazardous weather is likely or favorable to develop
- CASA Radar: Used to verify or identify hazardous weather is actually occurring





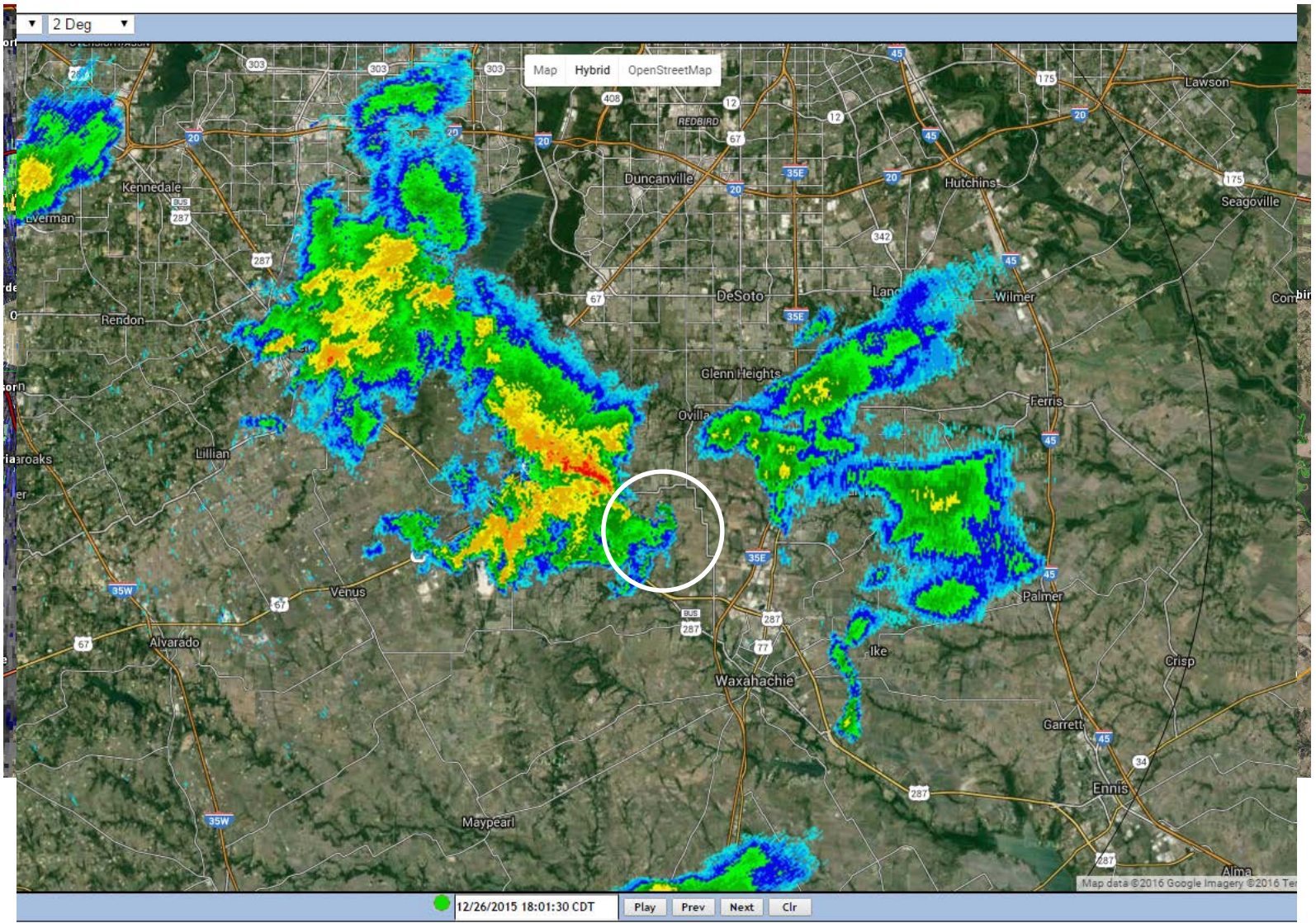
Velocity (MPH)    Dec 26, 2015    2 Deg

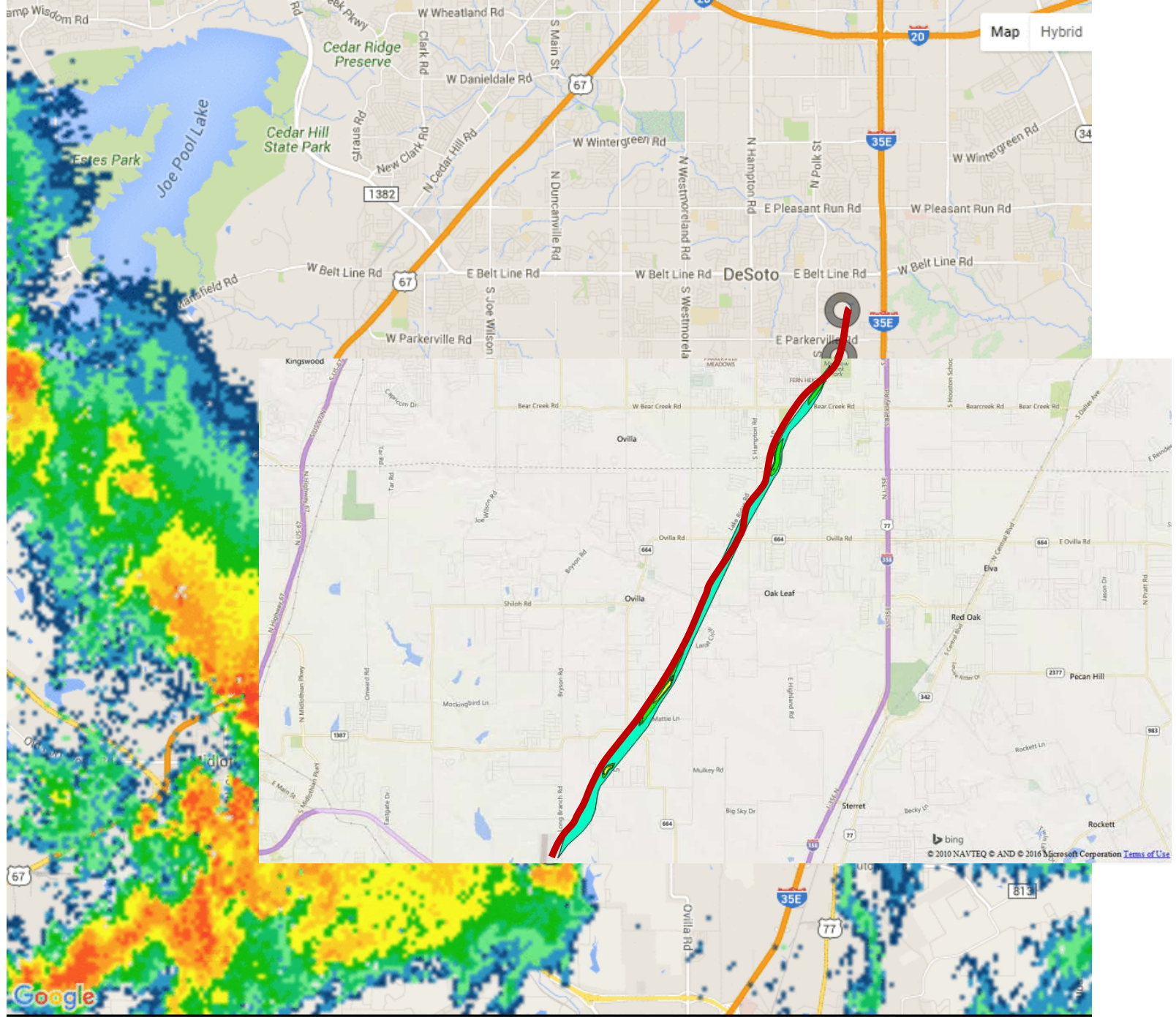


12/26/2015 17:50:30 CDT    Play    Prev    Next    Clr



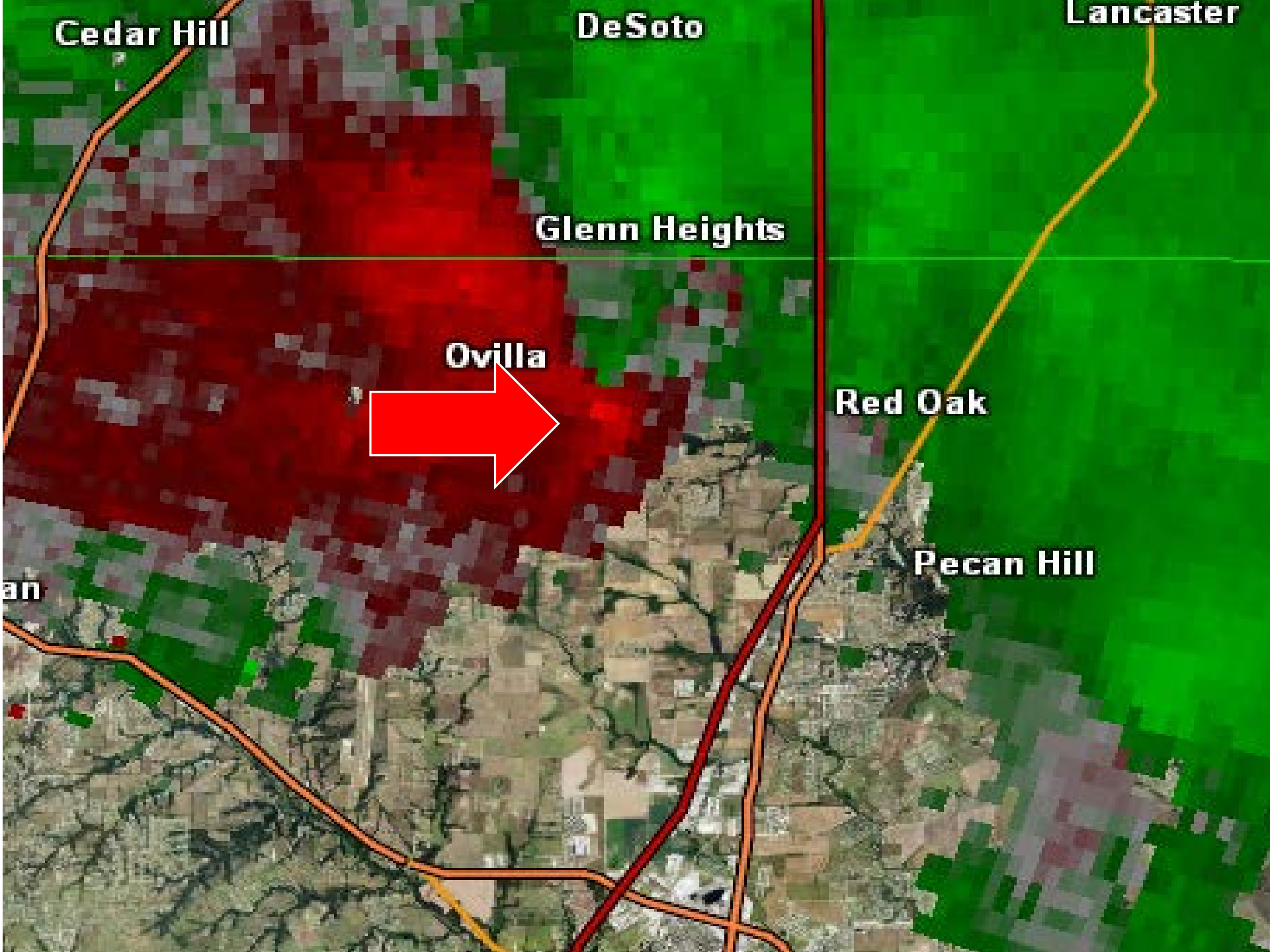
# Correct Order of Investigation





Map Hybrid

12/26/2015 18:00:10 CDT



**Cedar Hill**

**DeSoto**

**Lancaster**

**Glenn Heights**

**Ovilla**

**Red Oak**

**Pecan Hill**

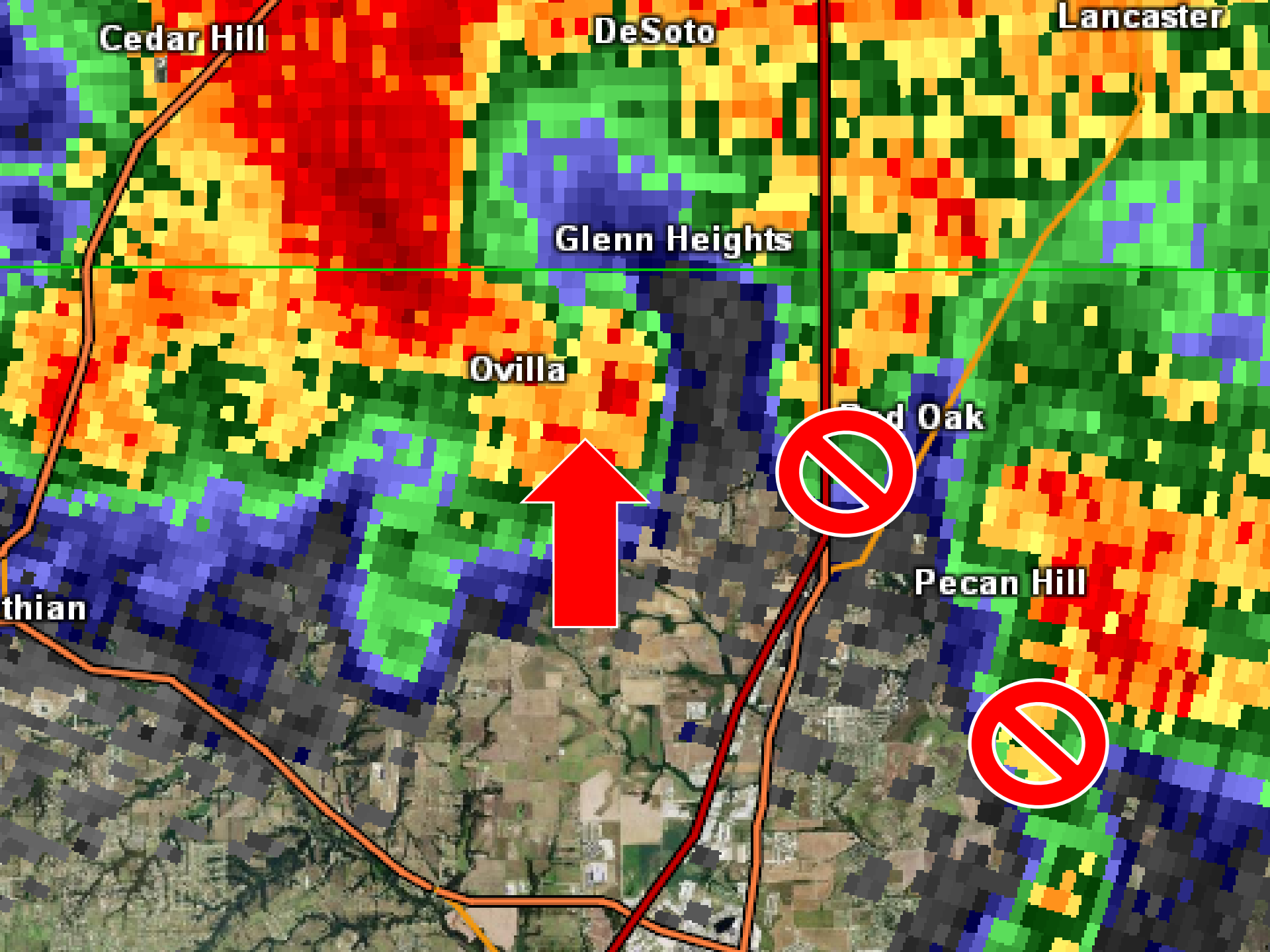
**an**



# CASA Advantage With Tornadoes

- Radar Verification – We know it's happening
- We know the specific locations impacted down to street level
  - Could lead to several minutes of highly specific warning
  - Could allow rescue crews to be dispatched toward certain areas before emergency calls are received





Cedar Hill

DeSoto

Lancaster

Glenn Heights

Ovilla

Oak

Pecan Hill

thian

- NWS is still learning how to interpret this radar data
- NWS does not expect the emergency management community to be able to interpret this radar data to find severe weather features
- NWS will provide assistance!
  - If we see something we will post our thoughts in NWSChat

# Other hazards CASA can help identify

- High winds
- Heavy rain/flooding
  - Encouraging data shows that CASA rain estimates are very accurate and highly precise in certain areas and situations
- Hail detection
  - Street level precision of where the worst hail is falling

# Coming Soon...

- More CASA radars = better quality network
  - Radar in NW Fort Worth transmitting data within days or weeks
  - Radar in Garland/Mesquite being installed next month
- Hazard displays for non-meteorologists

# Summary

- CASA is still a new scientific tool that we are all learning how to use
- Be cautious when using CASA radar to diagnose a hazardous weather threat
- NWS is committed to learning the best practices and sharing these with CASA users