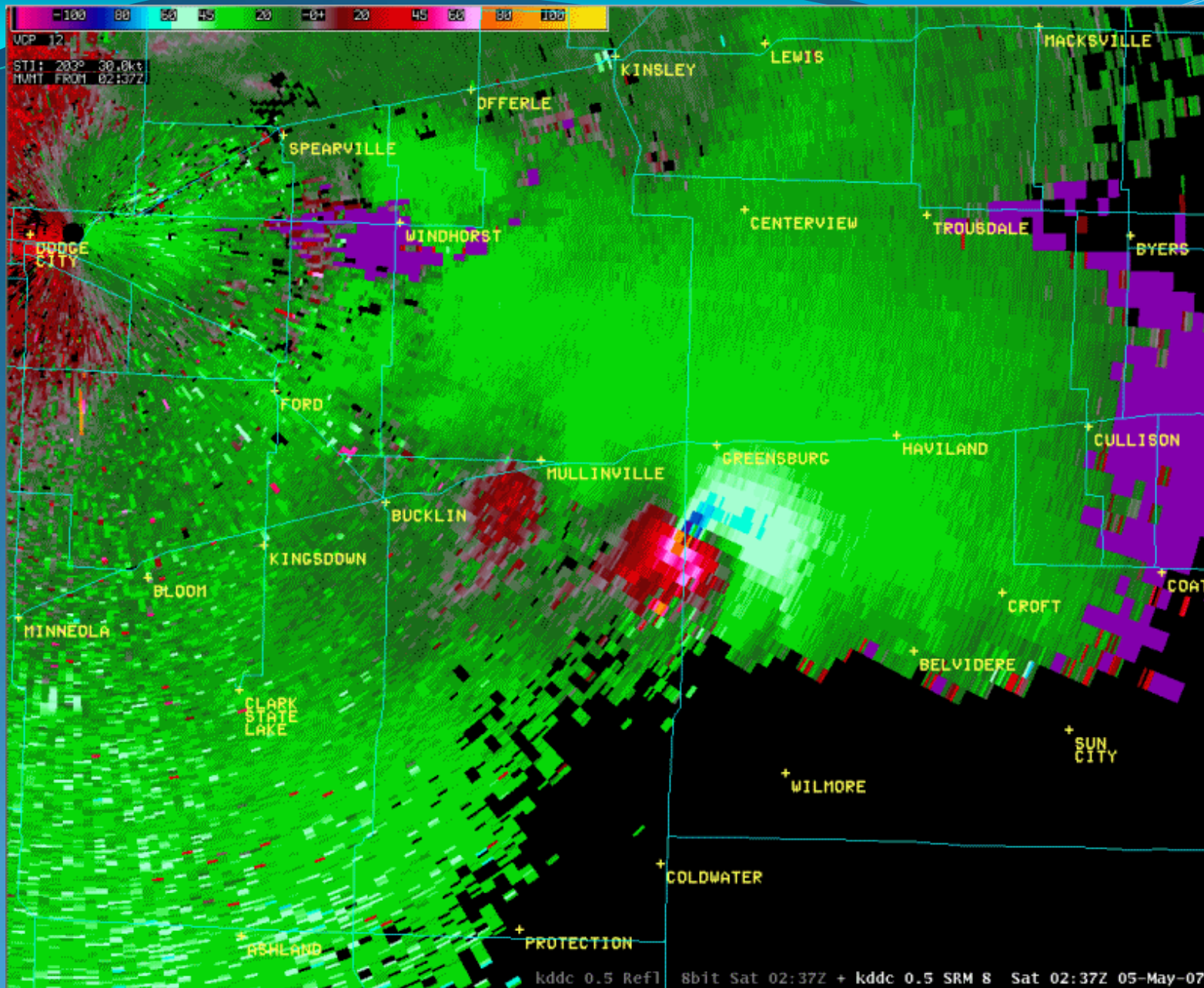


TESSA

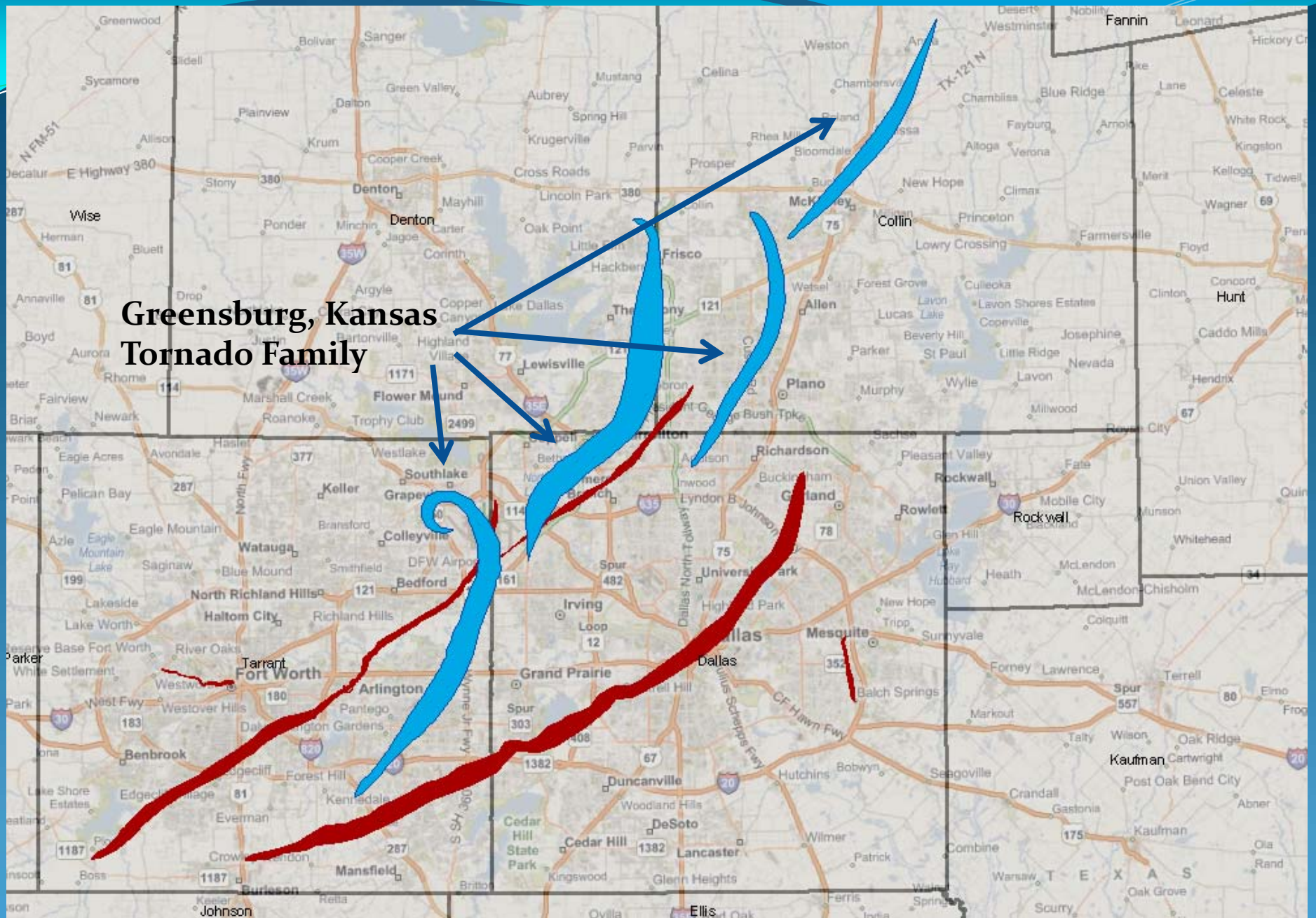
The 100 square mile tornado path:

Greensburg comes to Dallas

Greensburg Radar



Greensburg, Kansas Tornado Family



Fort Worth 2000

0.5 Sq. Miles

Mesquite 1984

1 Sq. Miles

Plainfield, IL 1990

5.0 Sq. Miles

Oklahoma City 1999

19 Sq. Acres

Wichita Falls 1979

26 Sq. Miles

All of the Above

51.5 Sq. Miles

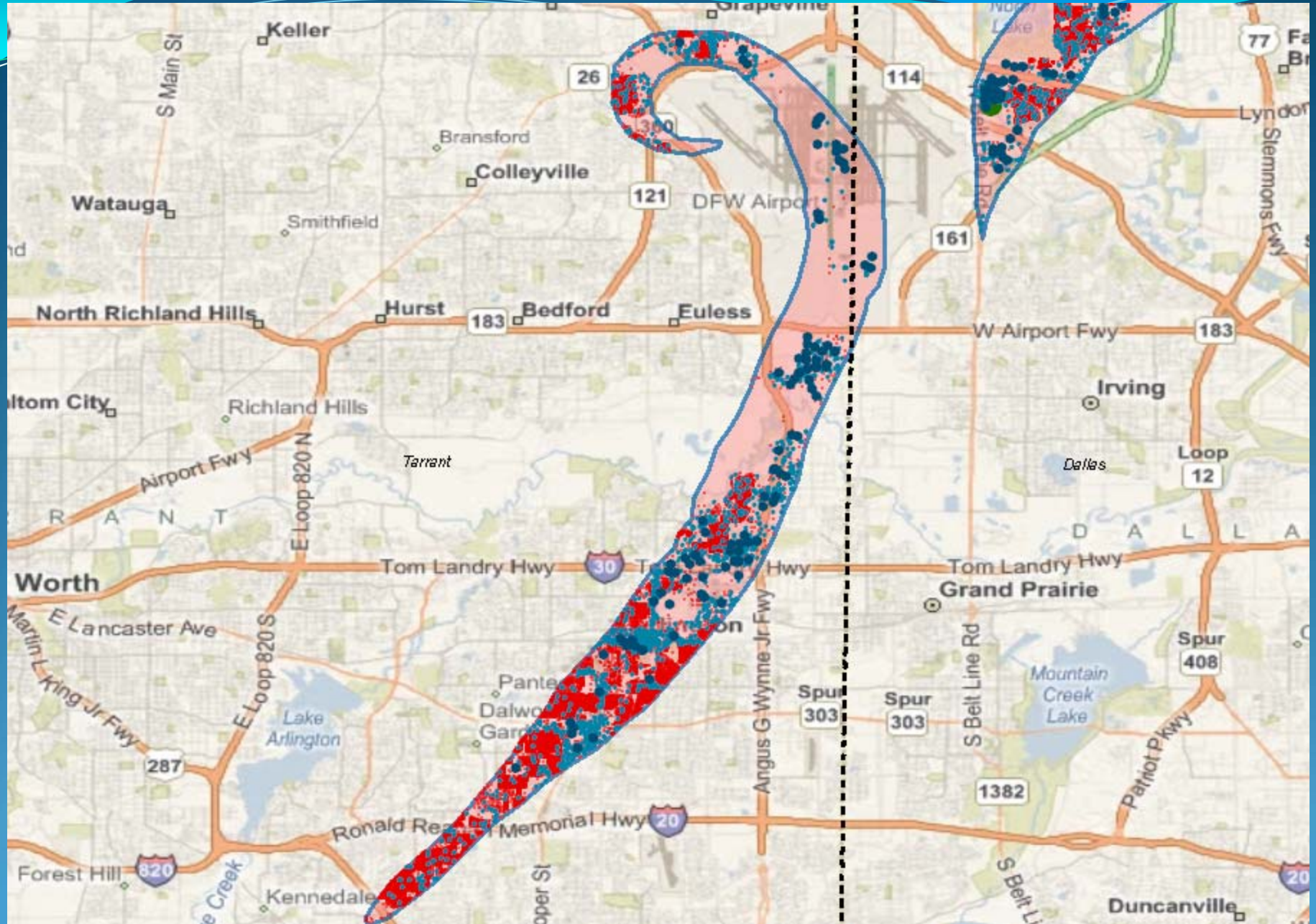
Entire May 3 1999 Event

80-90 Sq. Miles

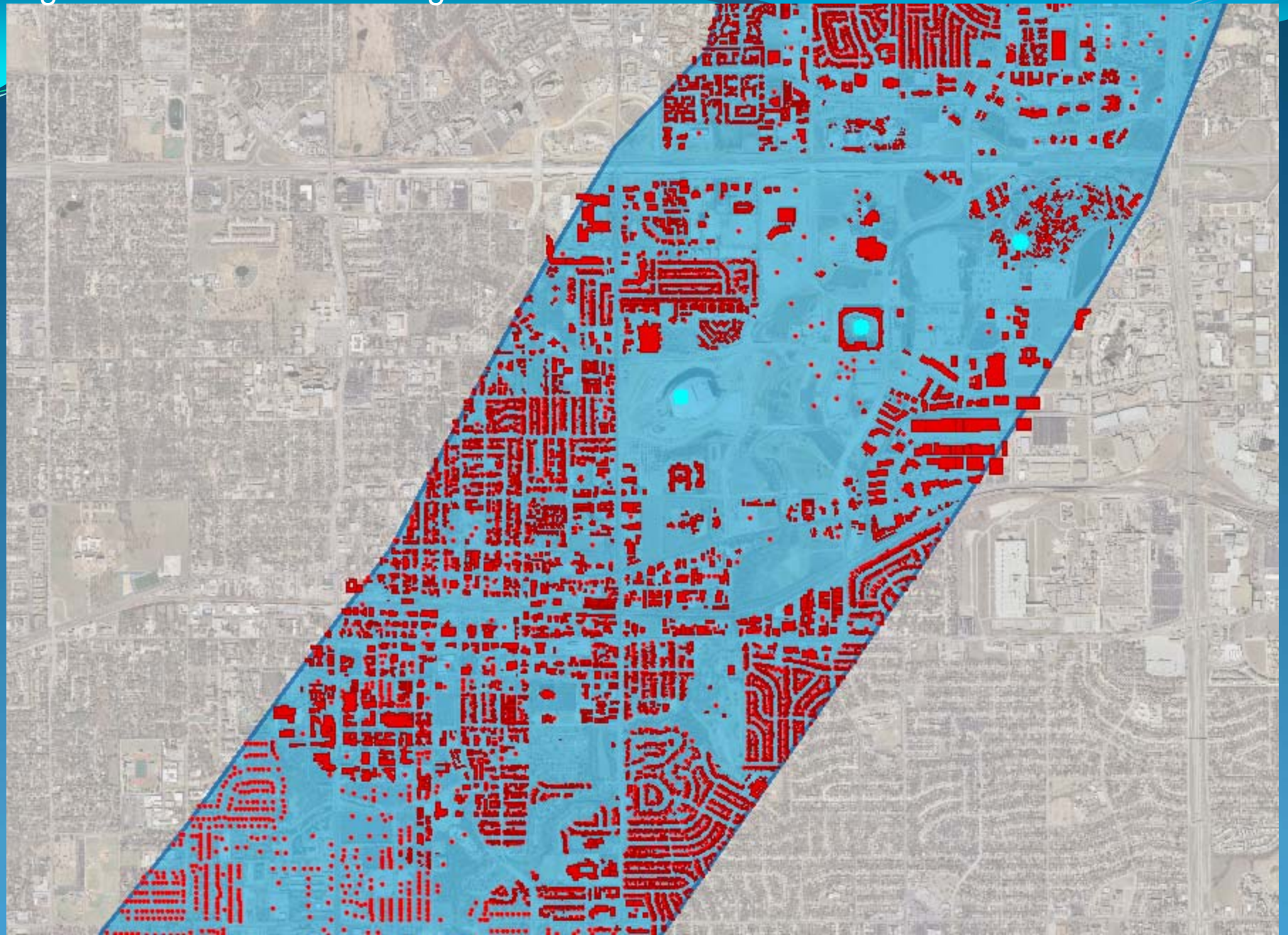
Greensburg

99.8 Sq. Miles

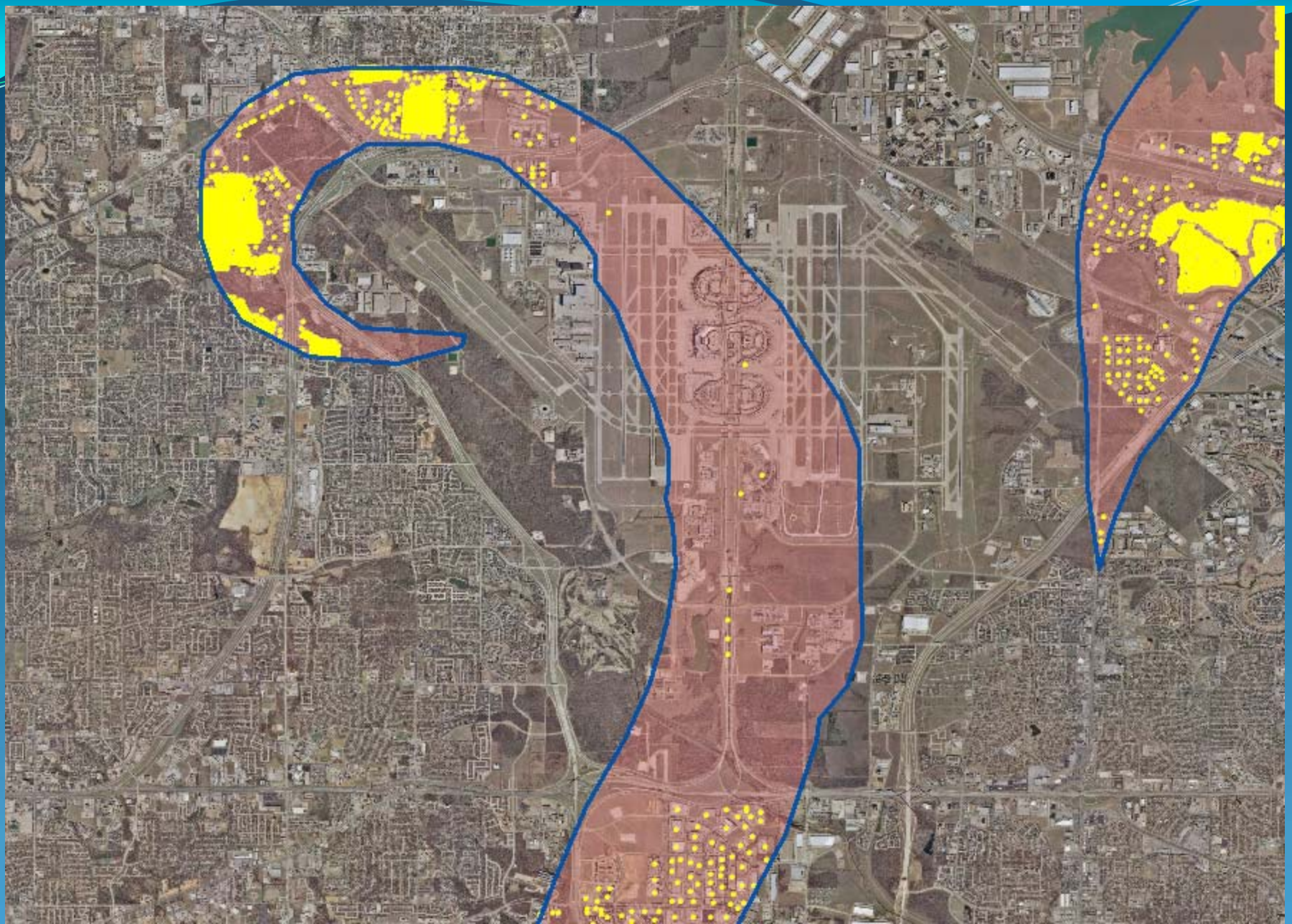
Parcels – Residential (red) and Commercial (blue)



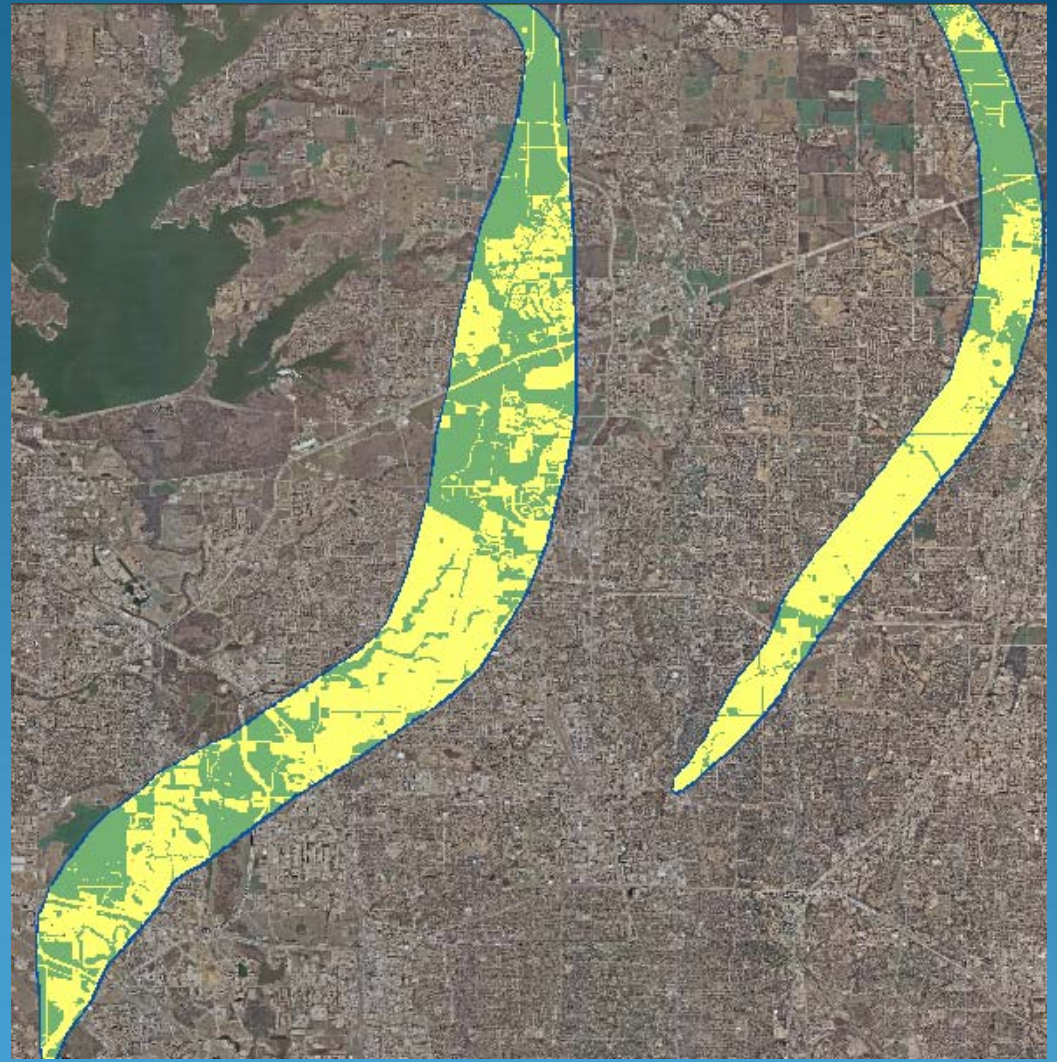
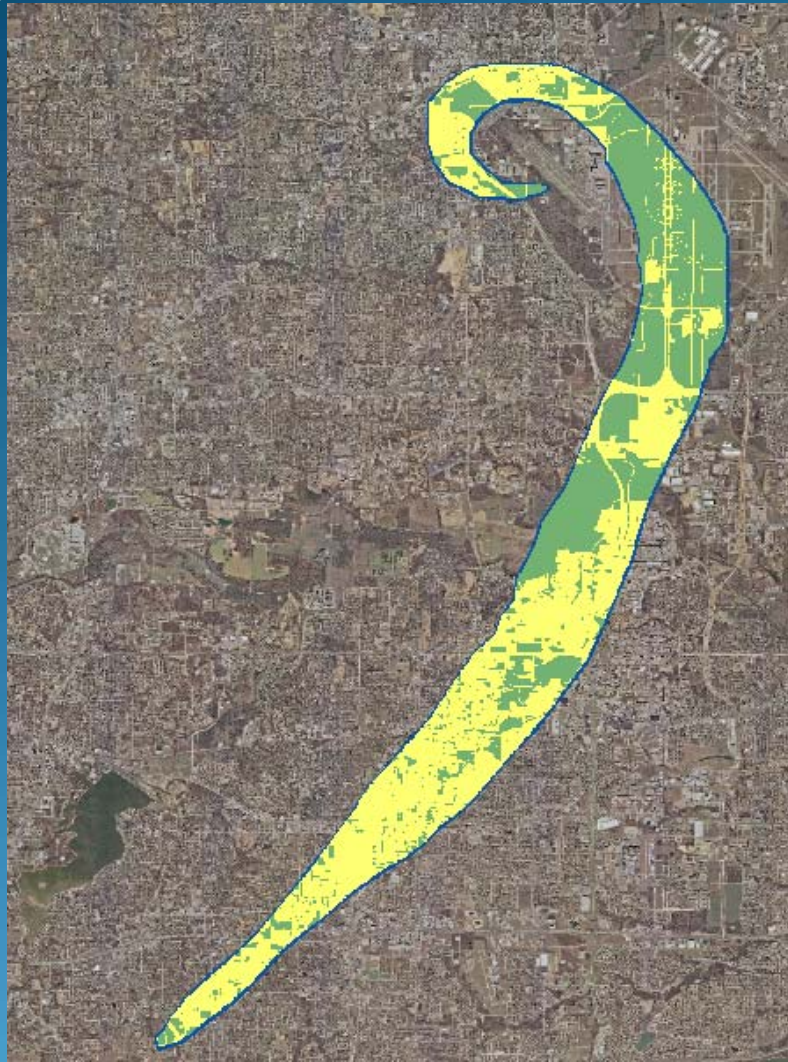
Significant Structures - Arlington



Parcels



Developed Area (Yellow) vs. Open Area



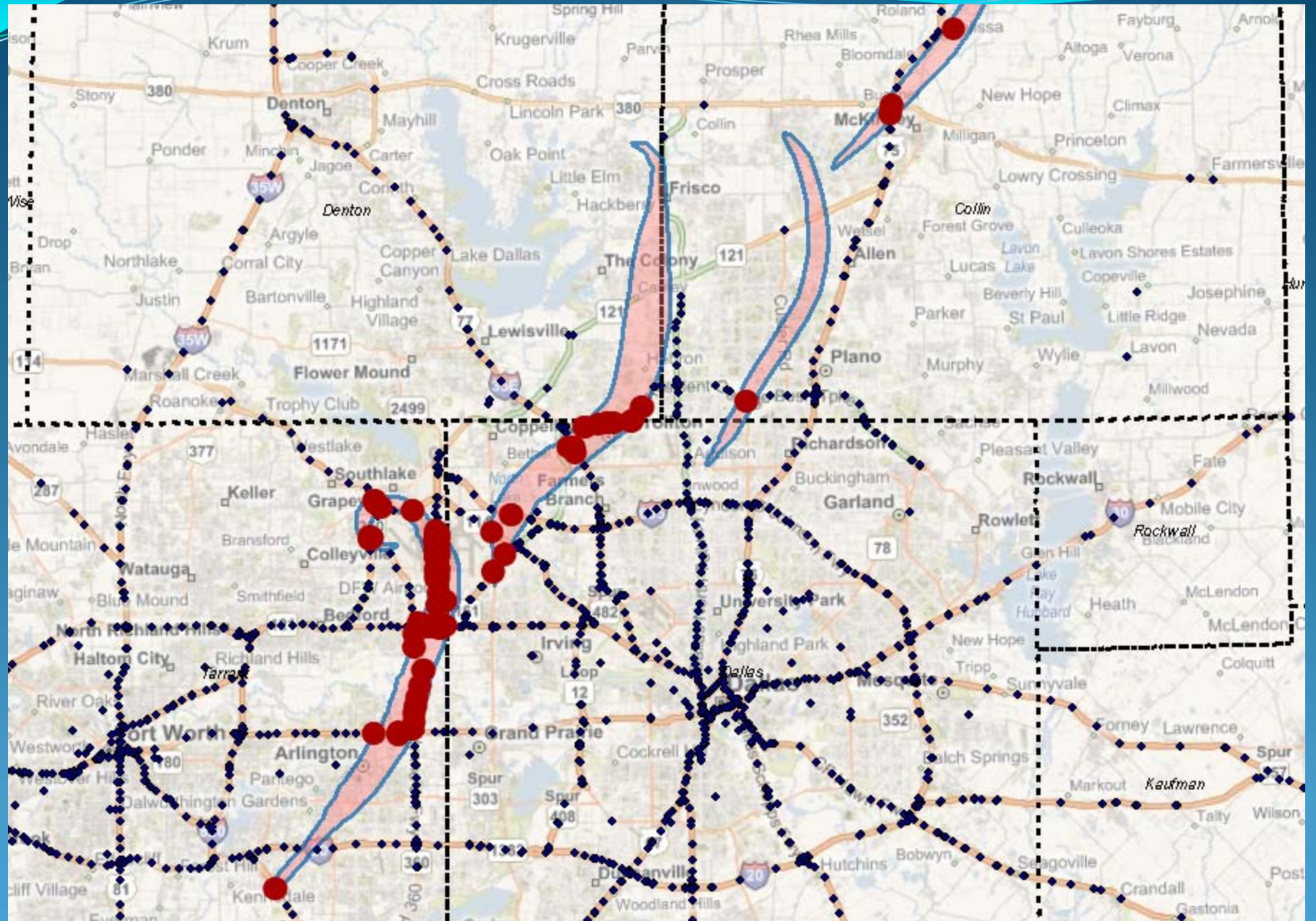
Development/Population in the Path

Type	Units	Population	Value
Single Family Homes	58,000	166,000	\$10,100,000,000
Apartment Units	50,500	99,000	\$1,900,000,000
Mobile Homes	160	380	\$2,500,000
Townhomes	470	1,180	\$65,000,000
Commercial Structures	2,280		\$3,600,000,000
Industrial Structures	90		\$195,000,000
TOTAL	111,000	266,560	\$15,885,000,000

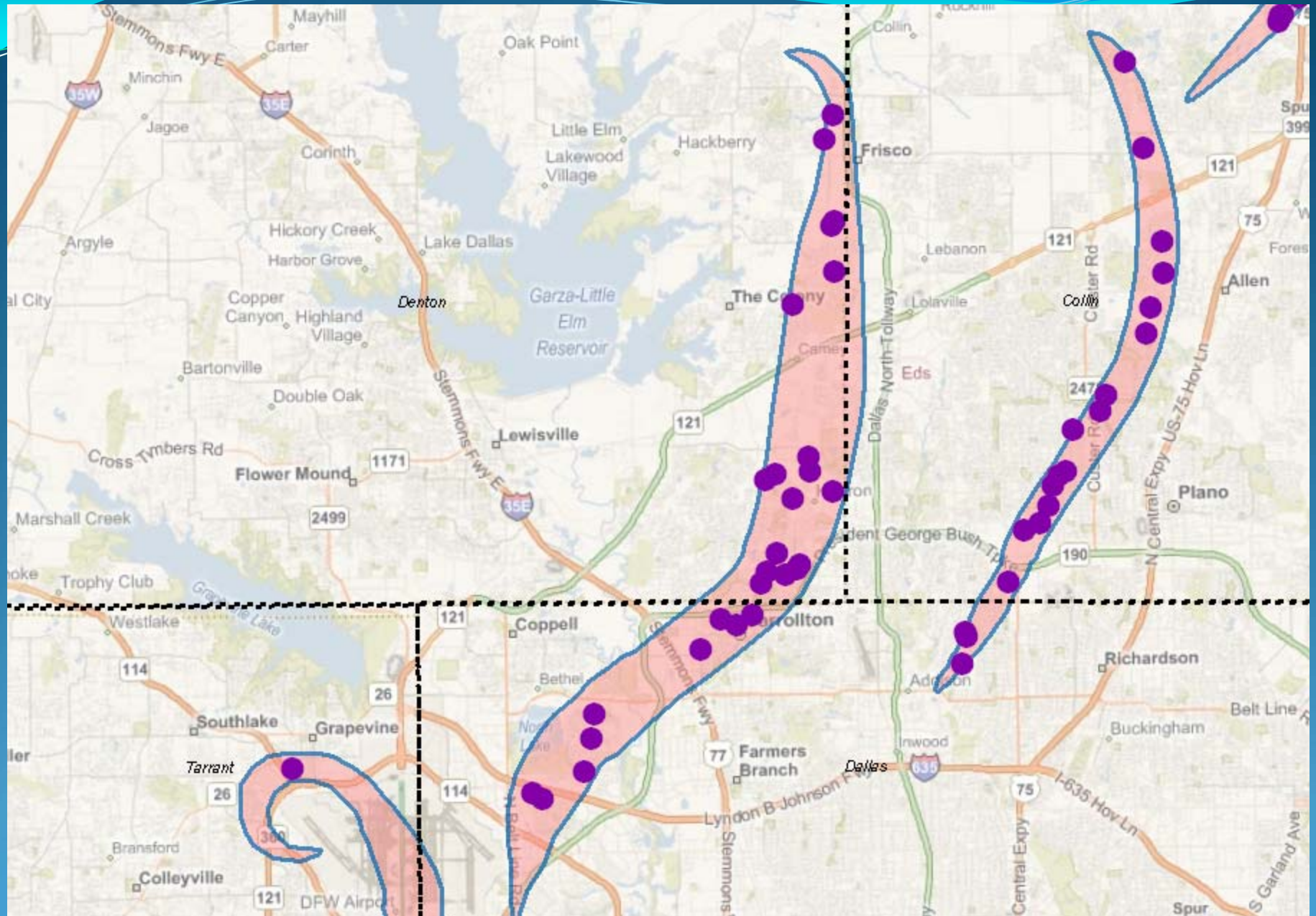
Traffic in the Path

TORNADO	Normal Volume	Traffic Jam
Tornado 1	3,618	100,682
Tornado 2	3,018	100,263
Tornado 3	1,225	37,748
Tornado 4	204	13,776
TOTAL	8,065	252,469

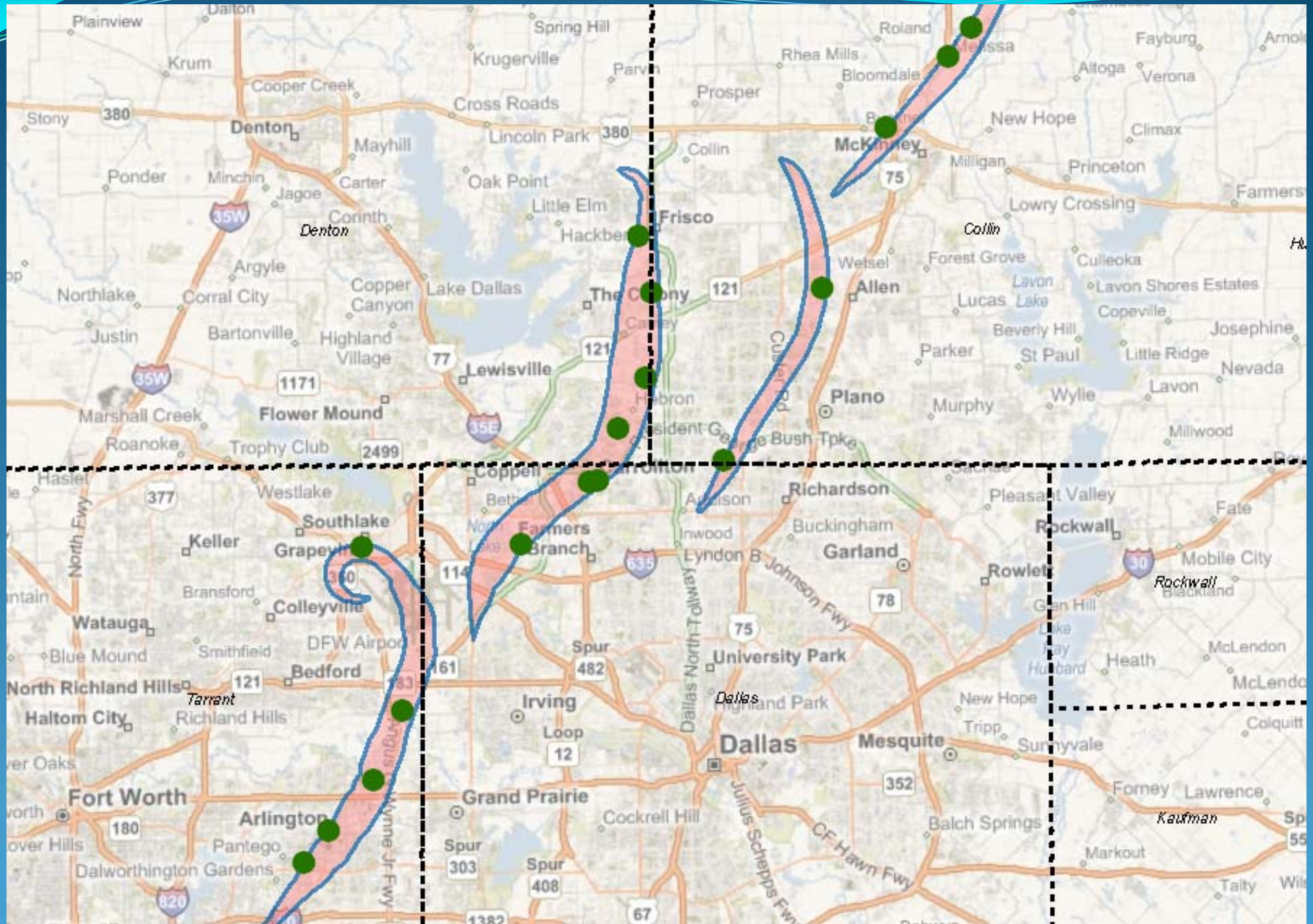
Overpasses - 239



Schools - 70



Police and Fire Stations - 17



Employees in Path

Total Employees: 149,000

Class	Employees
Transportation	20,000
Financial	11,200
Food Service	8,700
Universities	5,400
Sports Facilities	3,500
Amusement Parks	3,200
Government	3,100
Hotels	2,000