

## Virtual Field Exercise (VFE) A: Road Safety Audit Workshop: Bicycle and Pedestrian

Virtual Workshop: 4/27–4/29

### Roadway Summary

This study area is along Main Street from Peak St. to Carroll St. in the city of Dallas, northeast of downtown. Travel direction is from SW to NE along the 6-lane, minor arterial, with 3-lanes in each direction, separated by a grass median.

Posted speed throughout the section is 30 mph. Sidewalk facilities exist throughout the corridor; however, conditions vary, and some locations are deficient (see photos).

The selected roadway segment traverses a range of land uses, which are symbolized by the map/legend on the following pages. Annual Average Daily Traffic (AADT) is mostly consistent throughout the corridor ranging from 6,834 in the south to 8,514 in the north.

There are approximately 2 reported non-fatal pedestrian crashes and 1 non-fatal bicycle crash (although not visible, it is hidden under a pedestrian crash) at the intersection of Main St. and Carroll St. These crashes were reported between 2015 and 2019.

There were 2 reported non-fatal pedestrian crashes and 1 non-fatal bicycle crash along the selected route between 2015-2019. Crash locations are at the intersection of Main and Carroll. See table 1 below for details.

### Crash Data

<b>Bicycle and Pedestrian Crashes Reported on Route: 2015-2019</b>			
<b>Year</b>	<b>Bicycle</b>	<b>Pedestrian</b>	<b>Total</b>
2015	0	0	0
2016	1	1	2
2017	0	0	0
2018	0	0	0
2019	0	1	1
<b>Total</b>	<b>1</b>	<b>2</b>	<b>3</b>

Main Street in Dallas, TX, from Peak Street to Carroll Street

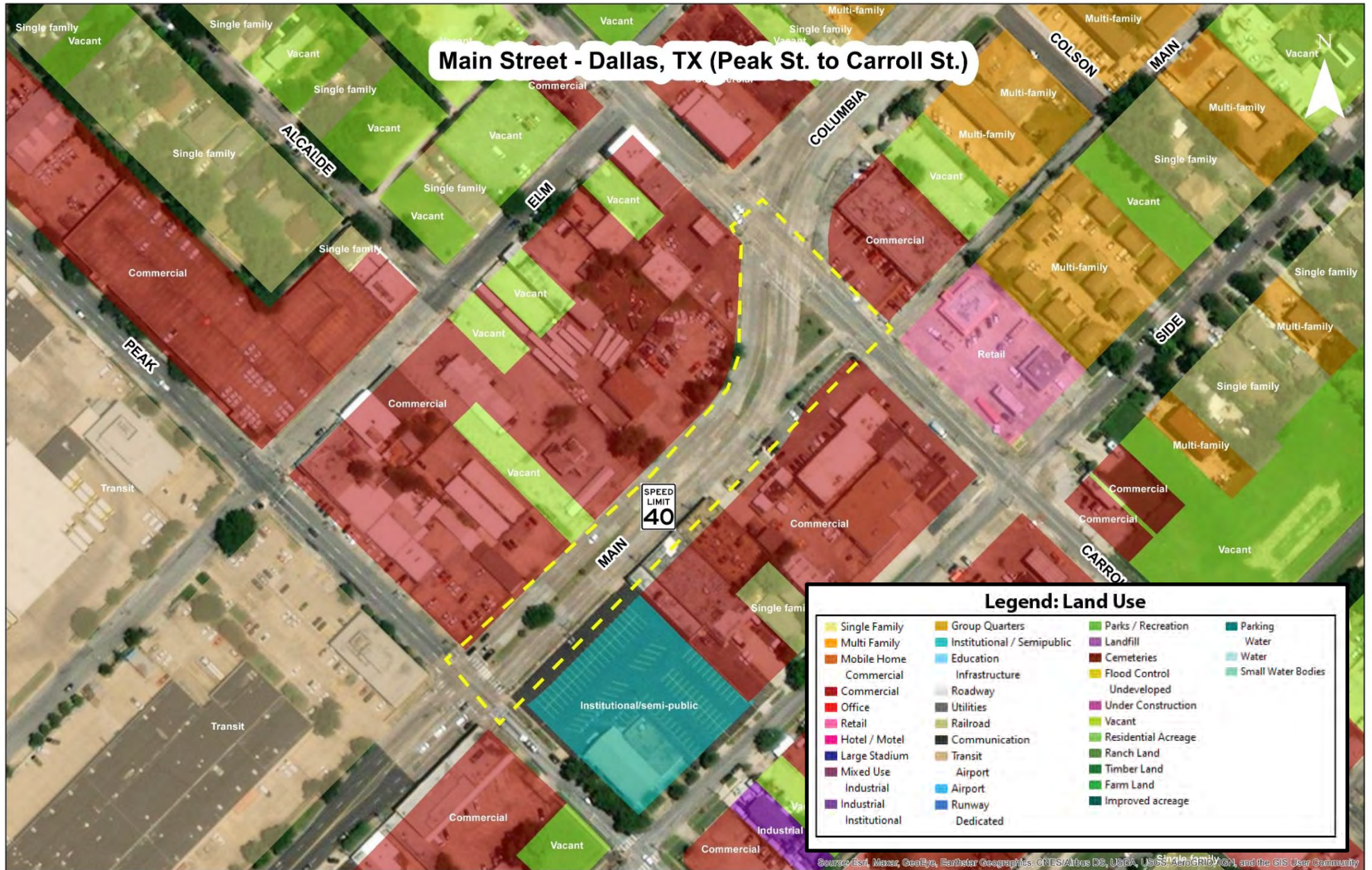


Source: Esri, Mapbox, GeoEye, Earthstar Geographics, CNES/Airbus DS, USDA, USGS, AeroGRID, IGN, and the GIS User Community

AADT for Selected Roadway Segment



**Patterns of Land Use**



**Existing Conditions**

**Figure 1:** Intersection at Main St and Peak. Poor sidewalk conditions, cross walk striping, ADA compliance issues, utilities need to be moved, limited right-of-way, etc.

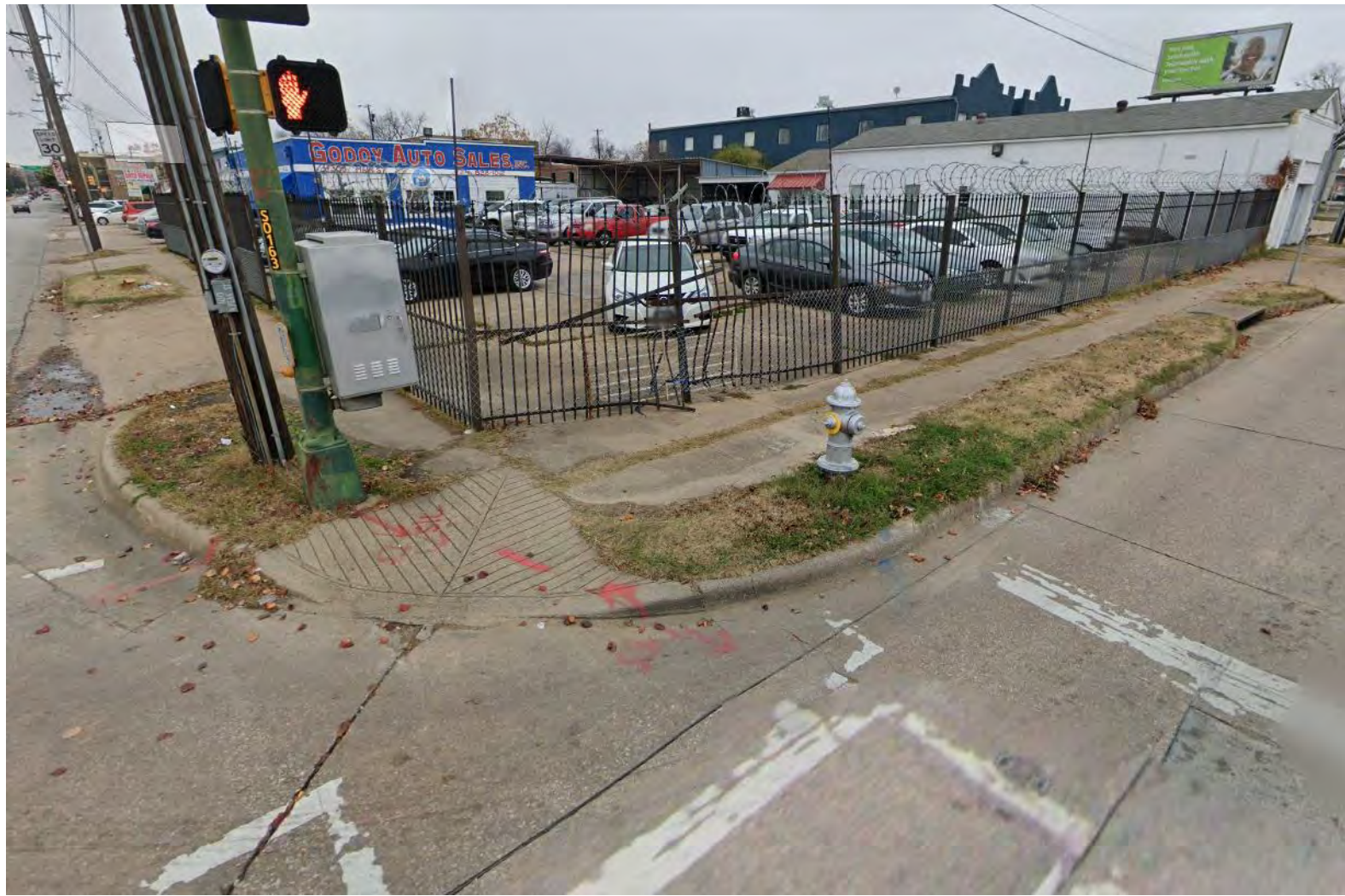


Figure 2: Intersection at Main St and Peak. Poor sidewalk conditions, cross walk striping, ADA compliance issues, utilities need to be moved, limited right-of-way, etc.



Figure 3: Driveways and access points with ADA compliance issues along segment.



Figure 4: Narrow sidewalk sections and poor pavement conditions along segment.





Figure 5: Shared bicycle route – consider level of service with lane widths and posted speeds.



**Figure 6:** Pedestrian facilities near the intersection of Main and Peak: Sections of sidewalk lacking ADA compliance, that periodically disconnect and force pedestrians to walk closer to the road and oncoming traffic. Utilities and abutting properties possess part of the existing sidewalk.



Figure 3: Pedestrian facilities halfway between Peak St and Carroll St have inconsistent and disconnected sidewalks that lack ADA compliance. Sidewalk and abutting property need repaving, ROW planting needs maintenance, and utilities encroach on sidewalk.



Figure 4: Access points and driveways with ADA compliance issues east side of Main St. Pedestrian facility is impeded upon by existing utilities and private driveways.

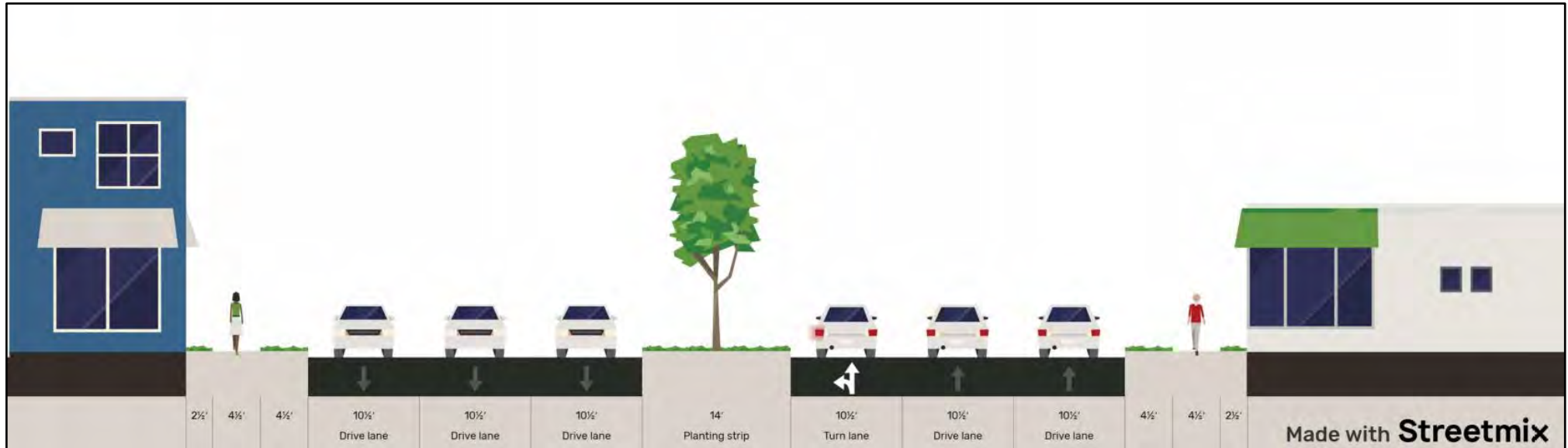


Figure 5: Pedestrian facilities approaching the intersection of Main St and Carroll lack ADA compliance. Sidewalk has been overrun by vegetation. Abutting property trees within the ROW.



## Cross Sections

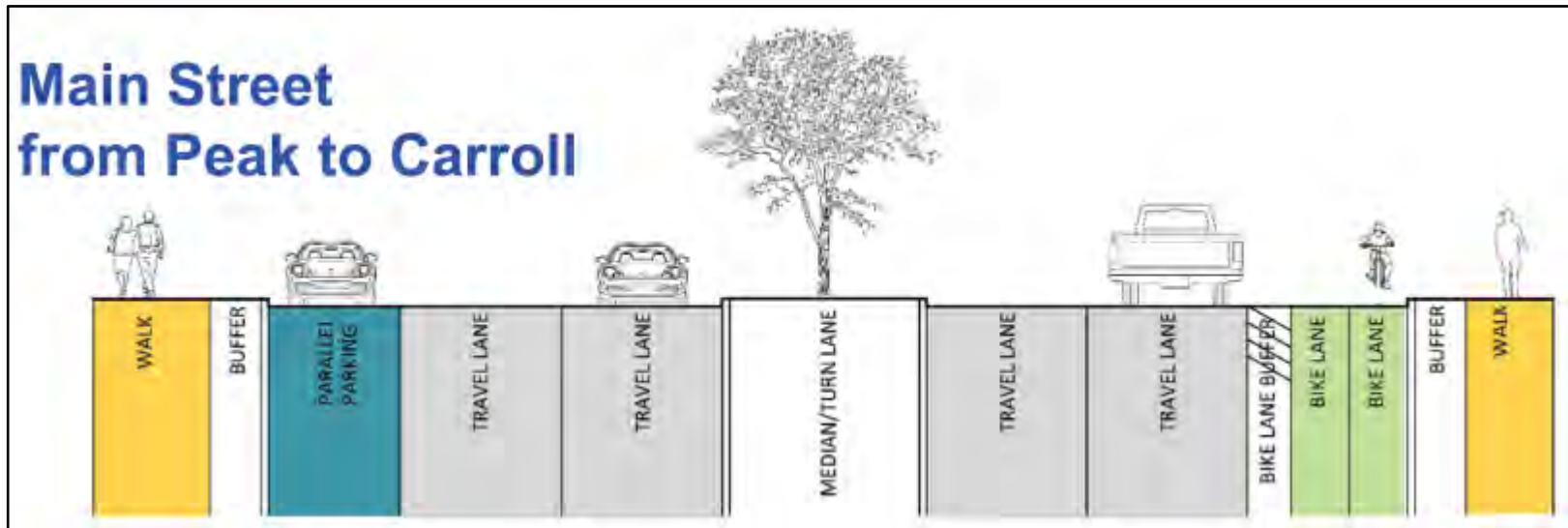
Existing:



Proposed Future Improvements:



## Main Street from Peak to Carroll



# COMPLETE STREET IMPROVEMENTS STREET RECONSTRUCTION ID No. K1

Main Street/Columbia Avenue from Santa Fe Trail to Beacon Street - PB17VA12



## 60% SUBMITTAL

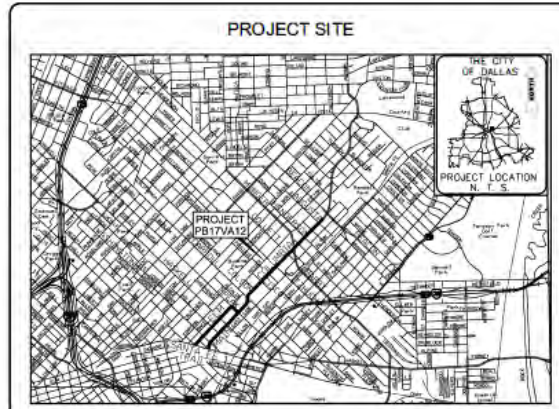
**CITY OF DALLAS**  
**DEPARTMENT OF PUBLIC WORKS**

NO.	FILE	SHEET NO.	DATE

PLAN REVISION SUMMARY

FILE #	SHEET NO.	DESCRIPTION	
311D-4510	1	CONCRETE DRIVE	
311D-4510	2	GENERAL NOTES	
311D-4510	3	HORIZONTAL & VERTICAL ALIGNMENT	
311D-4510	3	23	SEWER LOCATIONS
311D-4510	4	34	STREET LIGHTS PLAN
311D-4510	5	45	PAVING PLAN
311D-4510	6	52	PAVING DETAILS
311D-4510	7	65	PAVEMENT MARKING PLAN
311D-4510	8	75	LANDSCAPE PLAN
311D-4510	9	76	LANDSCAPE DETAILS
311D-4510	10	88	PLANTING PLAN

THE STANDARD DETAILS ATTACHED TO THESE CONSTRUCTION DRAWINGS HAVE BEEN DESIGNATED BY THE ENGINEER AS APPLICABLE TO THIS PROJECT.



LOCATION MAP N.T.S. MAPSCO: 44Q, 44R, 44T, 44U  
PB17VA12 - MAIN STREET/COLUMBIA AVENUE - 7,400 FT

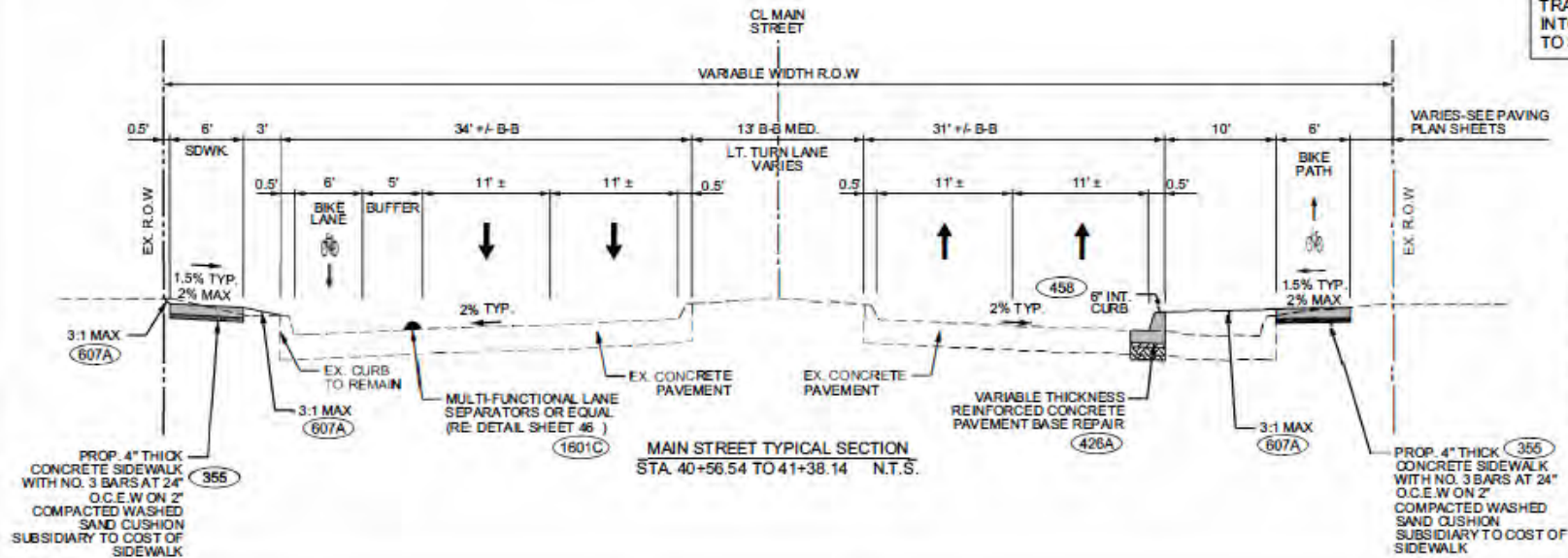
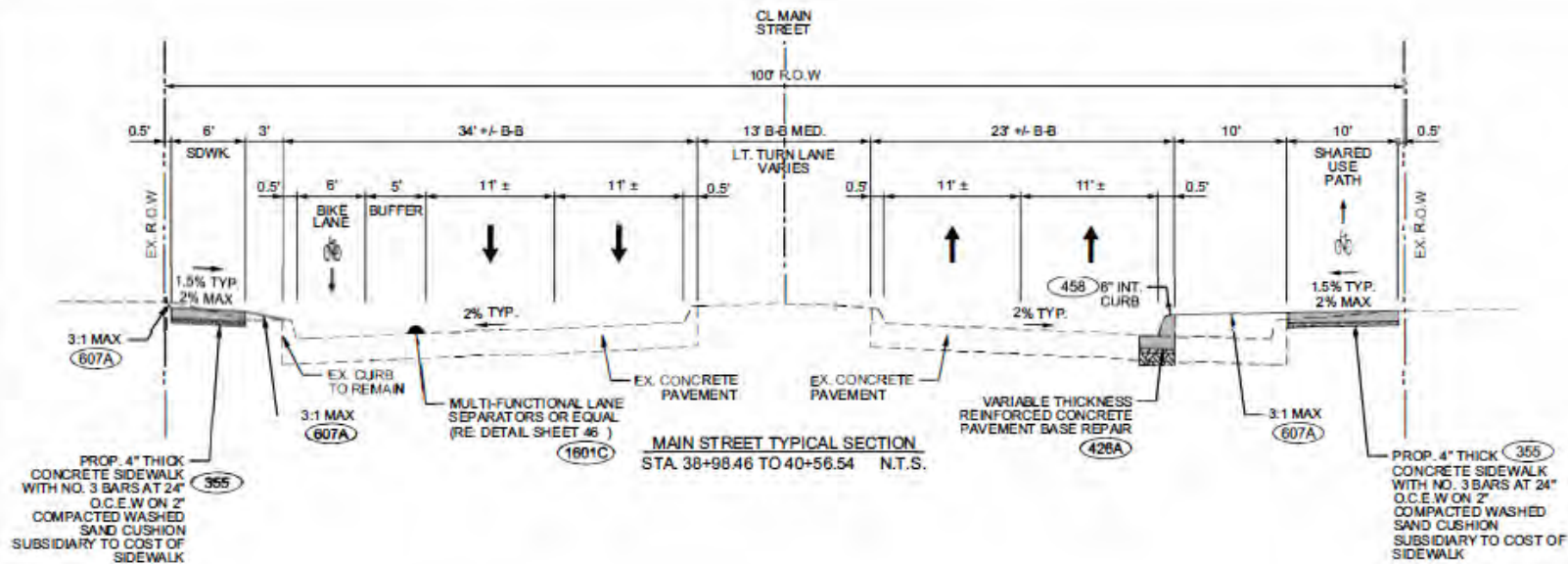
**PRELIMINARY PLAN**  
THIS DOCUMENT IS RELEASED FOR THE PURPOSES OF INTERIM REVIEW UNDER THE AUTHORITY OF BARRY EVANS, P.E. REG. NO. 134190, ON FEBRUARY 12, 2021. IT IS NOT TO BE USED FOR CONSTRUCTION, BIDDING, OR PERMIT PURPOSES.  
HUITT-ZOLLARS, INC.  
FIRM REGISTRATION NO. F-761

**HUITT-ZOLLARS** Huittzollars, Inc.  
1717 Midway Avenue, Suite 1400  
Dallas, Texas 75202  
Phone: (214) 871-2311 Fax: (214) 871-0217  
Web: hzcorp.com

DESIGNED BY	DATE
CITY PROJECT MANAGER	DATE
PROGRAM MANAGER	DATE
ASSISTANT DIRECTOR	DATE
DIRECTOR OF PUBLIC WORKS	DATE

FILE 311D - 4510  
FILE 313D - 4510





NORTHEAST-BOUND BIKE LANE TRANSITIONS FROM BEHIND CURB INTO STREET FROM STA 41+38.14 TO STA 41+68.27

**PRELIMINARY PLAN**

THIS DOCUMENT IS RELEASED FOR THE PURPOSES OF RECORD REVIEW UNDER THE AUTHORITY OF HB 1307, EFFECTIVE 9/1/2021. IT IS NOT TO BE USED FOR CONSTRUCTION, RECORD, OR PERMIT PURPOSES.

HEFF, DELANEY, INC.  
1988 W. BEAVER CREEK F-81

**5**  
**11**

**HUITT-ZOLLARS**  
11717 HIGHTOWER AVENUE, SUITE 1100 DALLAS, TEXAS 75243-2100  
PHONE: 972-968-8800

**TYPICAL SECTIONS**  
MAIN STREET/COLUMBIA AVENUE  
FROM SANTA FE TRAIL TO BEACON ST.  
DEPARTMENT OF PUBLIC WORKS  
**CITY OF DALLAS, TEXAS**

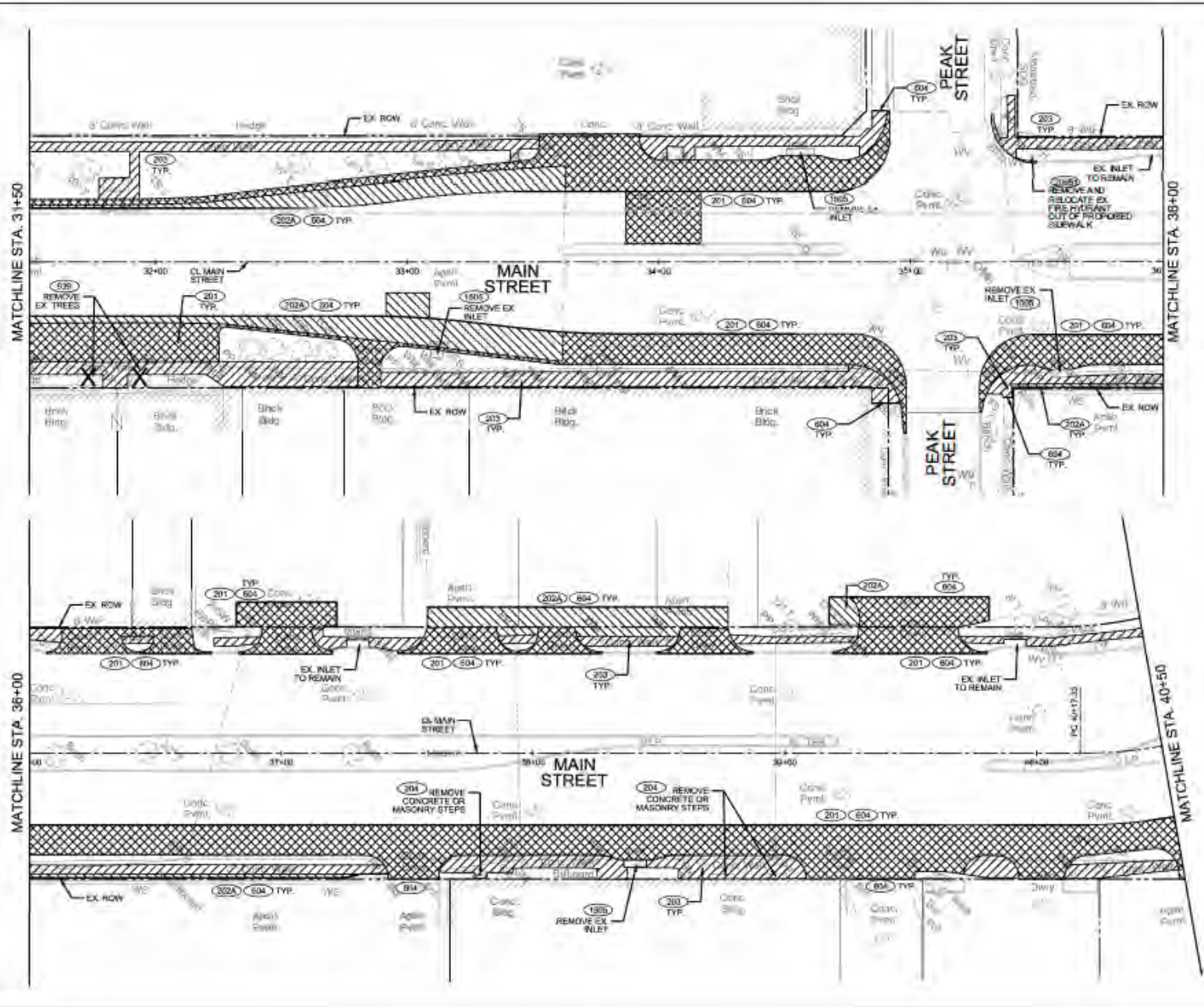
DESIGN	DRAWN	DATE	SCALE	SHEET	TOTAL
HE	HE	100 202	NTS	17	311D 4510



**LEGEND**

	REMOVE CONCRETE PAVEMENT	201
	REMOVE ASPHALT PAVEMENT	202A
	REMOVE CONCRETE PAVEMENT WITH ASPHALT OVERLAY	201 (NRA)
	REMOVE CONCRETE SIDEWALK	203
	REMOVE CONCRETE MEDIAN	209
	REMOVE EX. TREES/LUSH	204
	VARIOUS REMOVAL (SEE PLAN CALLOUT)	
	SAWED BREAKOUT GROOVE	204

- NOTES**
- POWER POLES IN CONFLICT WITH PROPOSED IMPROVEMENTS TO BE RELOCATED BY OTHERS.
  - CONTRACTOR TO COORDINATE REMOVAL OF EXISTING BUS STOP FURNITURE WITH DAIRY BUS STOP FURNITURE AND FIXTURES TO BE REMOVED BY OTHERS.
  - REMOVAL OF EXISTING SIDEWALK AND BROKEN CURBS SHALL BE SAWED OR REMOVED AT EXISTING JOINTS.



**PRELIMINARY PLAN**

THIS DOCUMENT IS RELEASED FOR THE PURPOSES OF CONSTRUCTION ONLY. THE CITY OF DALLAS ASSUMES NO LIABILITY FOR ANY DAMAGE TO PERSONS OR PROPERTY CAUSED BY THE USE OF THIS DOCUMENT. THE USER SHALL BE RESPONSIBLE FOR OBTAINING ALL NECESSARY PERMITS AND APPROVALS FROM THE APPROPRIATE AGENCIES.

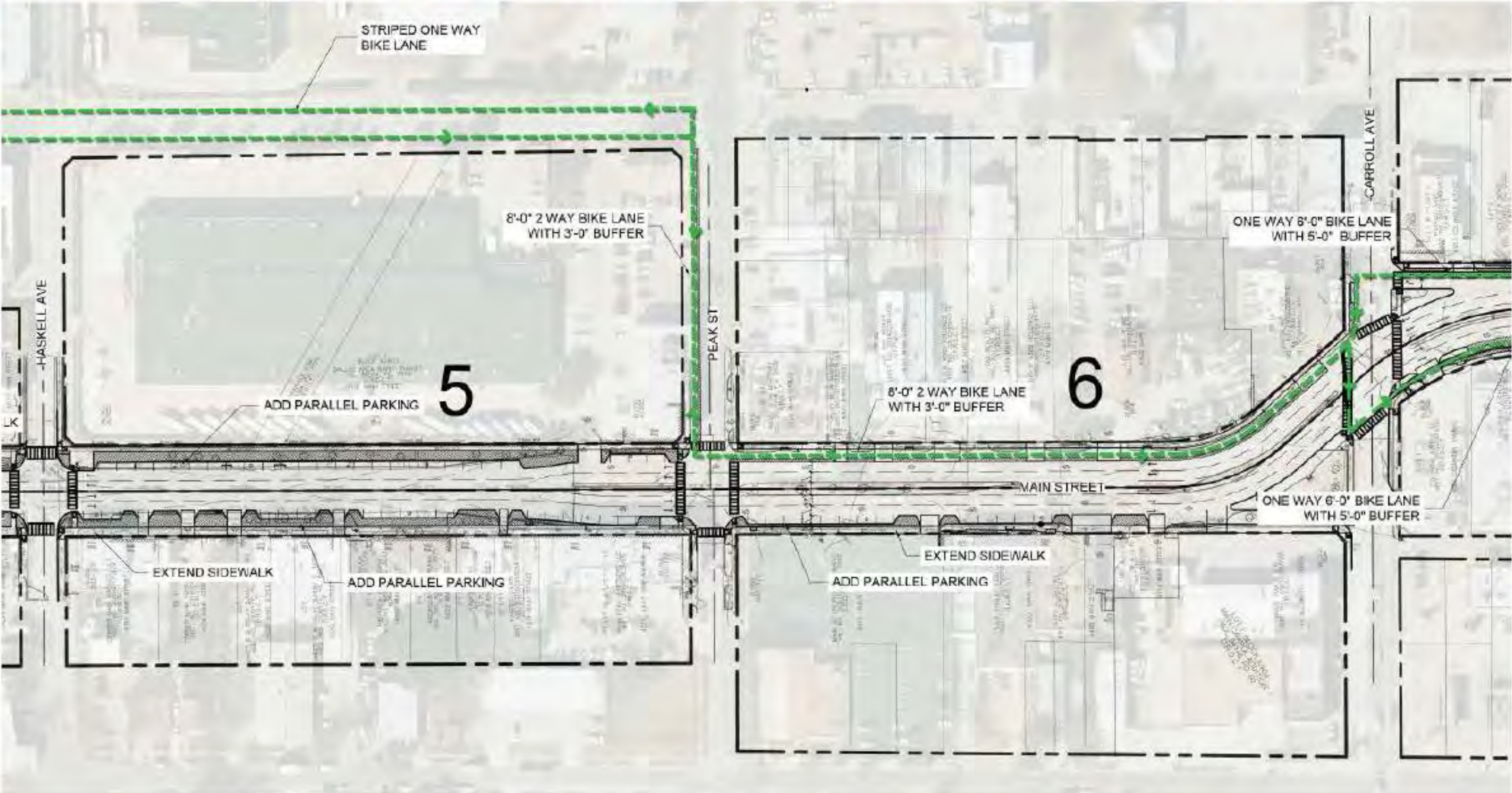
**3**  
**11**

**HUITT-ZOLLARS**  
 1711 HANCOCK ROAD, SUITE 100, DALLAS, TEXAS 75206  
 PHONE: 972-343-1111

**DEMOLITION PLAN**  
 MAIN STREET TO COLUMBIA AVENUE  
 FROM SANTA FE TRAIL TO BEACON ST.  
 DEPARTMENT OF PUBLIC WORKS  
 CITY OF DALLAS, TEXAS

DESIGN	DATE	SCALE	INCHES	FEET	NO.
10	05	1/8" = 1'-0"	28	311D	4510

# Main/Elm Street from Carroll Avenue to Peak Street





## Virtual Field Exercise (VFE) B: Road Safety Audit Virtual Workshop: Bicycle and Pedestrian

4/27/21–4/29/21

### Roadway Summary

The study area is along Arkansas Lane, from South Davis Drive to South Center Street, in the southern area within the city of Arlington. Travel direction is west/east along the 4-lane, minor arterial, with 2-travel lanes in each direction, separated by a concrete median.

Posted speed throughout the section is 40 mph. Sidewalk facilities exist throughout the corridor; however, conditions vary, and some locations are deficient (see photos); however, there are some recently constructed sidewalk facilities from Matlock Road to South Center Street.

The selected roadway segment traverses a range of land uses, which are symbolized by the map/legend on the following pages. Annual Average Daily Traffic (AADT) is somewhat consistent throughout the corridor ranging from 7,898 in the west and 7,836 in the east.

There were 8 reported non-fatal pedestrian crashes and 2 non-fatal bicycle crashes along the selected route between 2015-2019. Crash locations extend from S Davis Dr to S Center St, occurring predominantly at intersections. See Table 1 below for details.

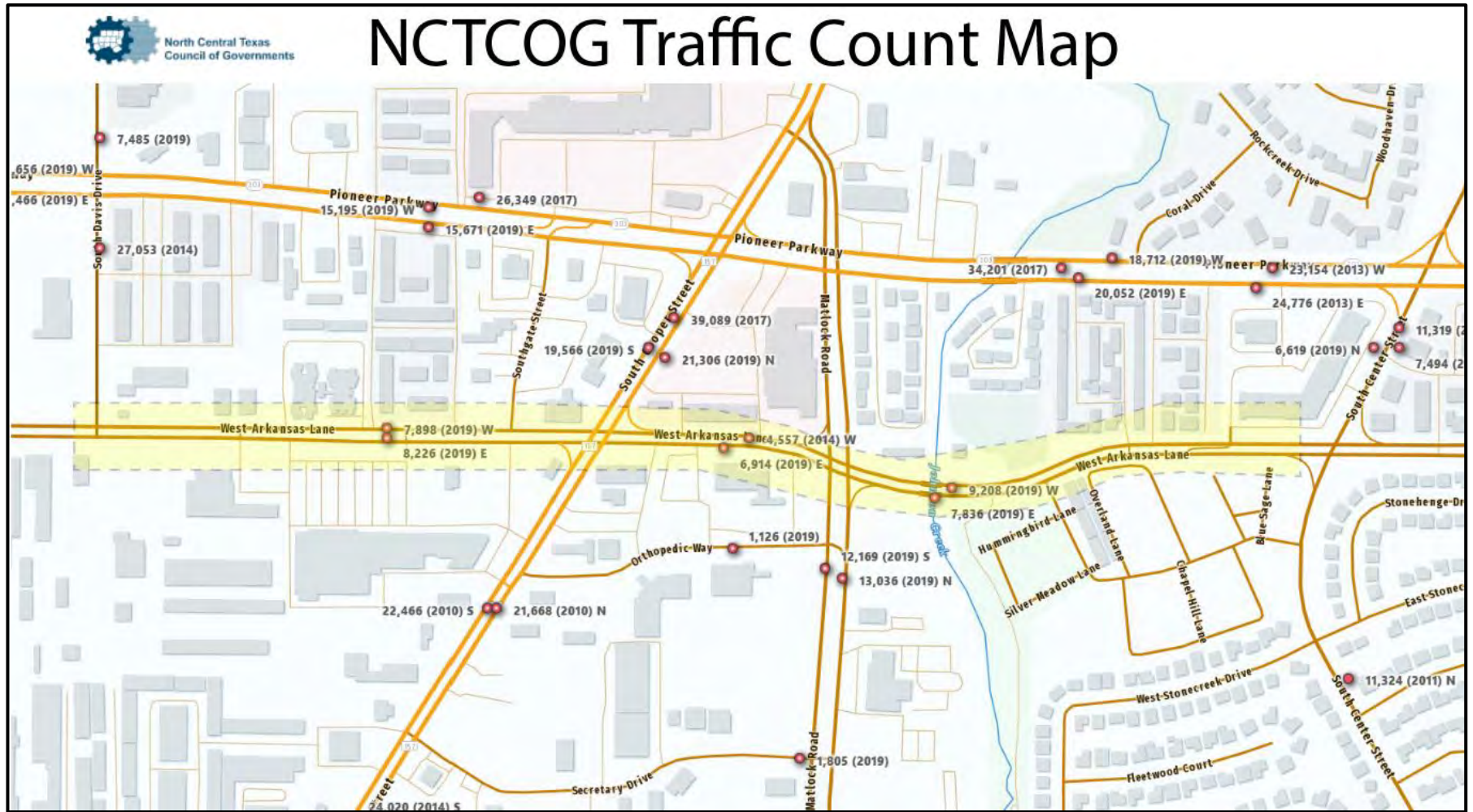
### Crash Data: 2015-2019

<b>Bicycle and Pedestrian Crashes Reported on Route: 2015-2019</b>			
<b>Year</b>	<b>Bicycle</b>	<b>Pedestrian</b>	<b>Total</b>
2015	0	3	3
2016	0	1	1
2017	0	2	2
2018	1	0	1
2019	1	2	3
<b>Total</b>	<b>2</b>	<b>8</b>	<b>10</b>

Arkansas Lane in Arlington, TX, from S Davis to Center St.

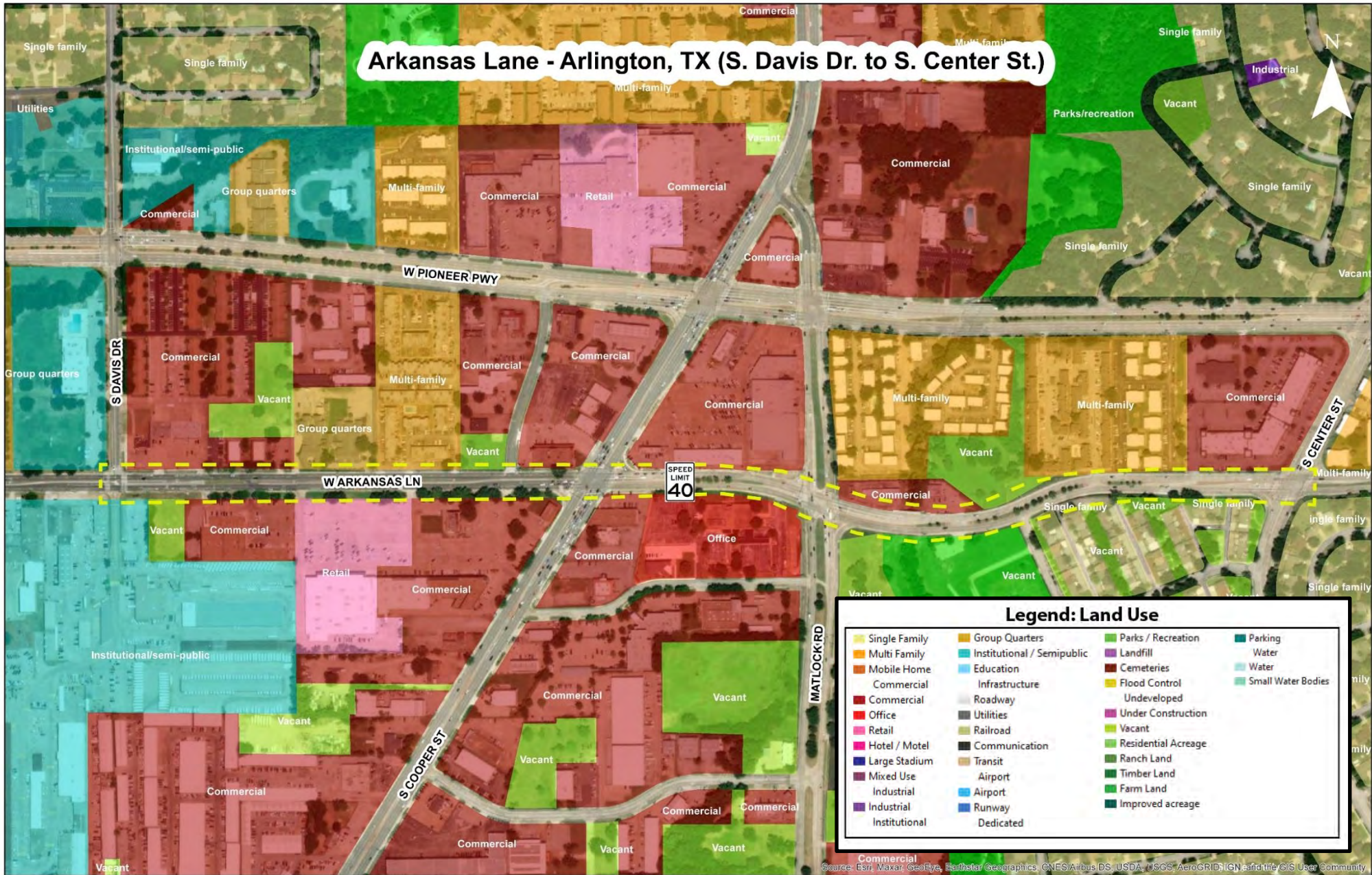


AADT for Selected Roadway Segment



**Patterns of Land Use**

**Arkansas Lane - Arlington, TX (S. Davis Dr. to S. Center St.)**



Source: Esri, Maxar, GeoEye, Earthstar/Geographics, CNES/Airbus DS, USDA, USGS, AeroGRID, IGN, and the GIS User Community



**Existing Conditions**

**Figure 1:** Pedestrian facilities at intersection of S Davis and Arkansas Ln: some sections lacking ADA compliance, no connected sidewalk facilities to Davis, utilities need to be relocated, narrow existing sidewalks, poor conditions, deficient crosswalk striping, etc.



Figure 2: More pedestrian facilities at intersection of S Davis and Arkansas Ln: some sections lacking ADA compliance, no connected sidewalk facilities to Davis, utilities need to be relocated, narrow existing sidewalks, poor conditions, deficient crosswalk striping, etc.



Figure 3: Another view of the intersection at W Arkansas Ln and S Davis Dr, facing eastward.

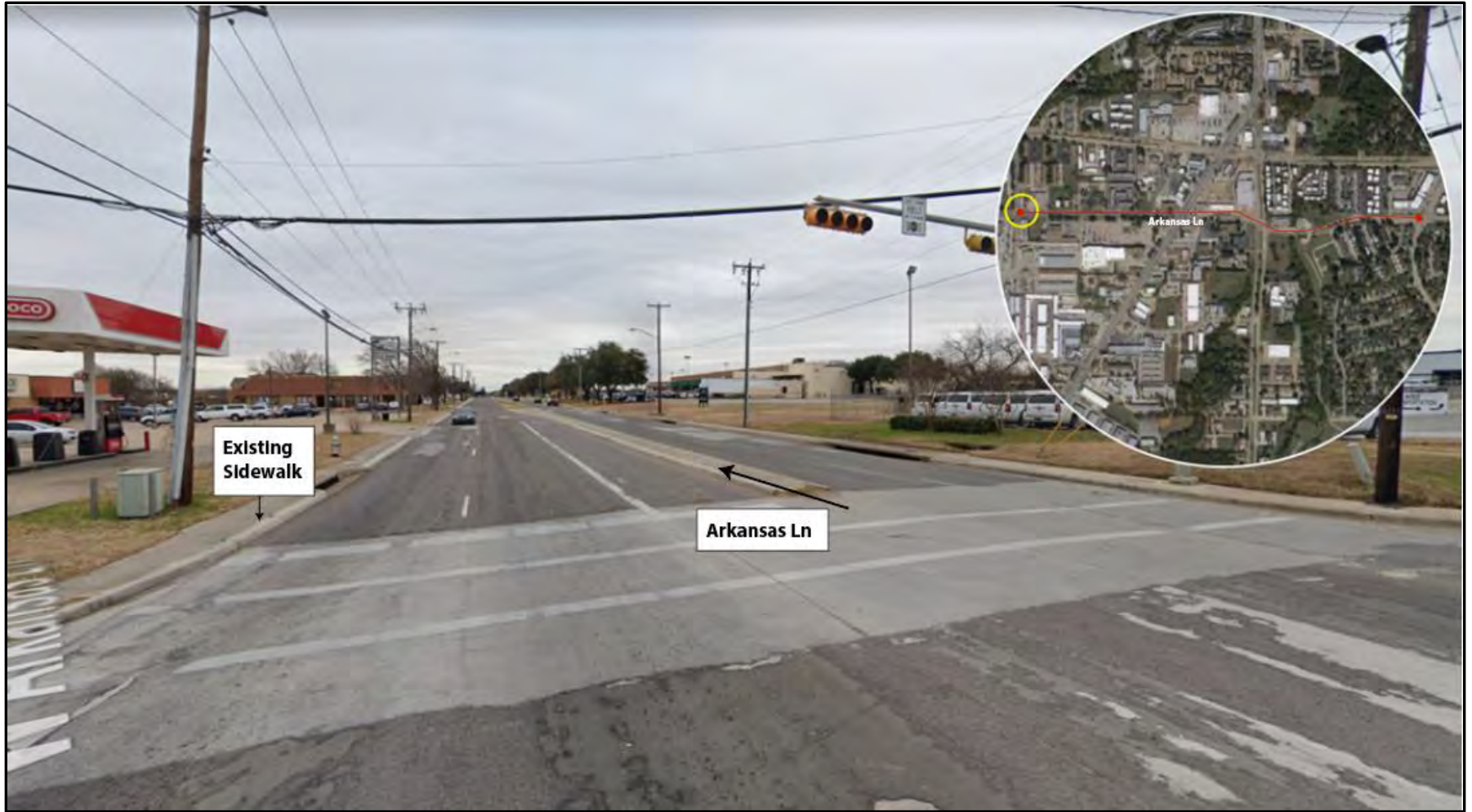


Figure 4: (Westbound along W Arkansas Ln) - Access points along the route with no ADA compliance, narrow sidewalks, poor pavement conditions, etc.



Figure 5: (Westbound along W Arkansas Ln) – More examples of access points with deficient conditions, lack of ADA compliance, limited right-of-way, and poor pavement conditions.



Figure 6:



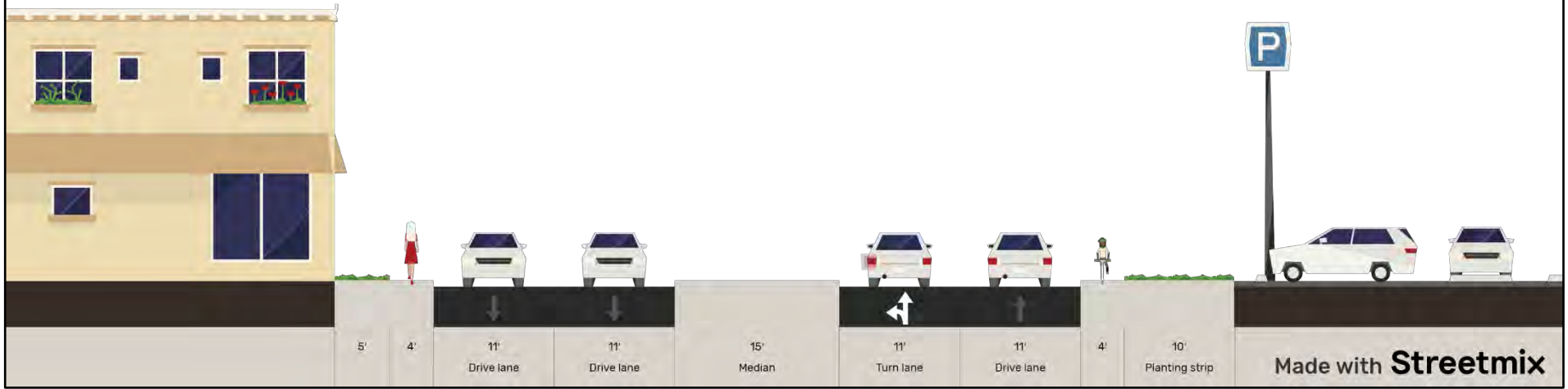
Figure 7:



Cross Sections

Existing:

# Sample Cross Section - Arkansas Ln





# City of Arlington Texas

## PAVING, DRAINAGE & WATERLINE IMPROVEMENTS

### FOR ARKANSAS LANE FROM

### COOPER STREET TO COLLINS STREET

IMPROVEMENTS TO ARKANSAS LANE (COOPER TO COLLINS)

**PROJECT NO. ST05-07 & WA05-026**

**JULY, 2008**

**DR. ROBERT N. CLUCK - MAYOR**  
**SHERI CAPEHART - MAYOR PRO-TEM**

**CITY COUNCIL MEMBERS**

**MEL LEBLANC      JIMMY BENNETT**  
**ROBERT RIVERA   GENE PATRICK   KATHRYN WILEMON**  
**LANA WOLFF      ROBERT SHEPARD**

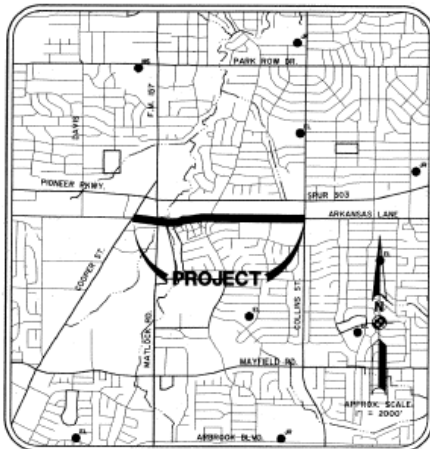
**JIM HOLGERSSON - CITY MANAGER**  
**ROBERT LOWRY, P.E. - DIRECTOR OF PUBLIC WORKS**



*Joseph C. Bradley*  
  
 7/1/08

**INDEX OF SHEETS**

Sht No.	Description
1	TITLE SHEET
2	TYPICAL PAVING SECTIONS
3	MISC. PAVING DETAILS
4	CONTROL POINTS AND ROADWAY CURVE DATA
5-8	REMOVAL LAYOUTS
9	DRAINAGE AREA MAP
10-14	STORM DRAINAGE
15-30	PAVING PLANS
31-32	DRIVEWAY SECTIONS
33-38	SANITARY SEWER PLANS
39A	TRAFFIC CONTROL FOR SEWER
39B	TRAFFIC CONTROL PLAN (F.M. 157)
40-58	WATERLINE PLANS
59-65	WATER/SEWER DETAILS
66-69	STORM DRAINAGE DETAILS
70-72	PAVING DETAILS
73-76	PEDESTRIAN FACILITIES (PED-05)
77-88	BARRICADE AND CONSTRUCTION STANDARDS (BC 1-12)



**LOCATION MAP**

**GENERAL NOTES**

- ALL CONSTRUCTION WITHIN THE STATE RIGHT OF WAY WILL REQUIRE COMPLIANCE TO TxDOT STANDARD SPECIFICATIONS, STANDARD PLANS, AND TEXAS MANUAL ON UNIFORM TRAFFIC CONTROL DEVICES.
- SPECIFICATIONS ADOPTED BY THE TEXAS DEPARTMENT OF TRANSPORTATION, JUNE 1, 2004, AND SPECIFICATION ITEMS LISTED AND DATED AS FOLLOWS SHALL GOVERN ON THIS PROJECT FOR ALL WORK WITHIN THE STATE RIGHT OF WAY.
- THE TxDOT STANDARD SHEETS, SPECIFICALLY IDENTIFIED IN THIS INDEX OF SHEETS, HAVE BEEN SELECTED BY ME OR UNDER MY RESPONSIBLE SUPERVISION AS BEING APPLICABLE TO THIS PROJECT.



**Schickel, Rollins and Associates, Inc.**  
 Landscape Architecture - Civil Engineering - Planning  
 1911 Corporate Drive West      Phone: 817-648-3276  
 Suite 200                              Metro: 817-648-3277  
 Arlington, Texas 76010              Fax: 817-648-3245

2006 ARTERIAL REBUILDS - ARKANSAS  
 STREET REBUILD (Cooper to Collins)  
 ST05-07 & WA05-026  
 Project Engineer: Daniel Burnham #62697  
 Cost Estimate: P&ID \$4,055,555 WA05 \$2,205,700  
 Pre-Bid Meeting: July 22, 2008 at 2:00 pm  
 Bid Date: August 5, 2008 at 7:30 am

\* THE STANDARD SHEETS, SPECIFICALLY IDENTIFIED IN THIS INDEX OF SHEETS, HAVE BEEN SELECTED BY ME OR UNDER MY RESPONSIBLE SUPERVISION AS BEING APPLICABLE TO THIS PROJECT.

*Joseph C. Bradley*  
 JOSEPH E. BRADLEY, P.E., REG. NO. 58295



Schrickel, Rollins and Associates, Inc.  
 Landscape Architectural / Civil Engineering / Planning  
 1901 Corporate Drive West Phone: 817-493-3235  
 Suite 200 Metro: 817-493-8272  
 Arlington, Texas 76006 Fax: 817-493-7645



City of Arlington Texas  
**ARKANSAS LANE**  
 (COOPER ST TO COLLINS ST)

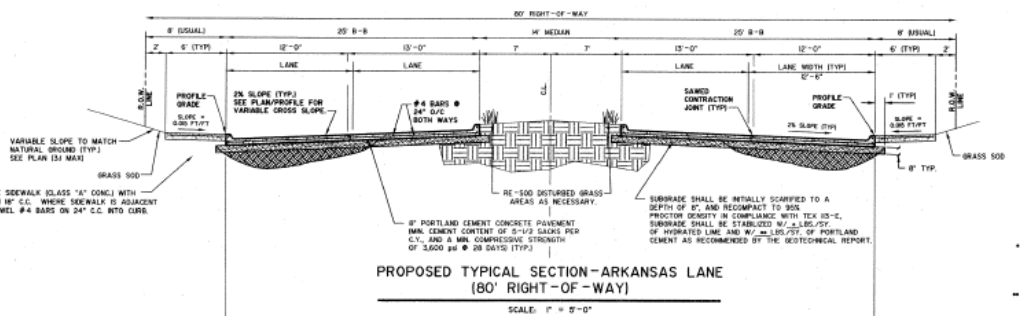


DATE:	04-19-08
REVISIONS:	-
STATUS:	BID
DESIGN BY:	KAD
DRAWN BY:	KAD
JOB NO.:	4657
FILE NAME:	

**TYPICAL PAVING SECTION AND PAVING DETAILS**

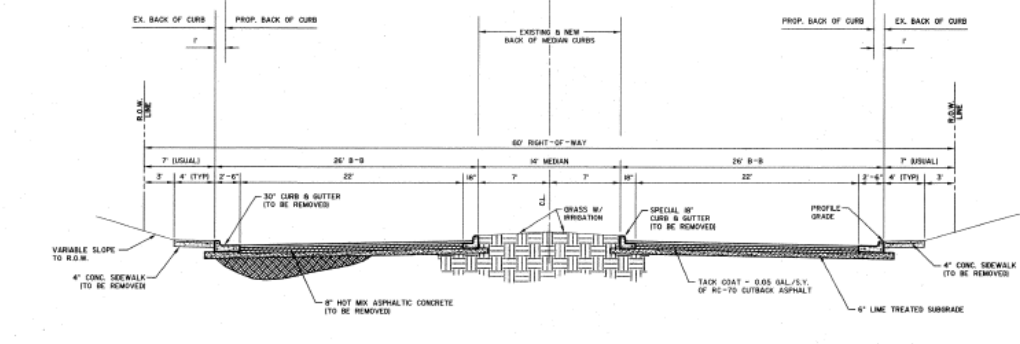
SCALE: **1" = 5'** HOR.  
**N/A** VERT.

SHEET NO. **2**  
 OF 88



**PROPOSED TYPICAL SECTION-ARKANSAS LANE (80' RIGHT-OF-WAY)**

SCALE: 1" = 5'-0"

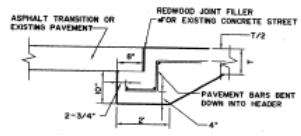


**EXISTING TYPICAL SECTION-ARKANSAS LANE (80' RIGHT-OF-WAY)**

SCALE: 1" = 5'-0"

**NOTE:**  
 IN ADDITION, ASPHALTIC CONCRETE OVERLAYS THICKNESS UNKNOWN HAVE BEEN PLACED OVER THE ROADWAY SINCE THE ORIGINAL PAVING SECTION WAS CONSTRUCTED AROUND 1971. SEE PLAN SHEETS FOR VARIOUS WATER, SANITARY SEWER, STORM DRAINAGE AND OTHER UTILITIES THAT ARE CONTAINED WITHIN THE EXISTING RIGHT-OF-WAY AND BENEATH THE EXISTING PAVEMENT.

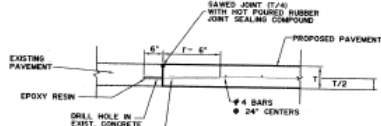
- NOTES:**
1. TRANSVERSE SAWED CONTRACTION JOINTS AT 10' INTERVALS AND LONGITUDINAL SAWED CONTRACTION JOINTS 6' FROM OUTSIDE BACK OF CURB.
  2. LIME SHALL BE APPLIED AT 4% BY WEIGHT. MINIMUM QUANTITY IS 400#/CY. IN SOME AREAS A GREATER QUANTITY OR 8' LIME SERIES TEST) MAY BE REQUIRED AT THE CITY'S DISCRETION.
  3. CEMENT SHALL BE APPLIED AT 2% BY WEIGHT. MINIMUM QUANTITY IS 300#/CY.
  4. FOR THIS PROJECT, ALL EARTHWORK INCLUDES UNDISTURBED EXCAVATION, GRADING AND TRIMMING OF THE SUBGRADE TO THE FINISH SUBGRADE ELEVATION ACROSS THE FULL RIGHT-OF-WAY WIDTH SHALL BE CONSIDERED NECESSARY TO THE SUBGRADE PREPARATION. ALL BORROW MATERIAL NECESSARY TO BE PLACED SHALL BE ACCOMPLISHED IN ACCORDANCE WITH THE BORROW AND ROADWAY FILL SPECIFICATIONS. ALL COSTS FOR OBTAINING, PLACING AND COMPACTING EXTRA MATERIAL TO ESTABLISH THE FINAL SUBGRADE ELEVATION SHALL BE MEASURED AND PAID FOR AS BORROW.



NOTE: PAVEMENT & HEADER TO BE POURED MONOLITHICALLY  
 NOTE: THIS IS SUBSIDIARY TO ITEM "9" REINFORCED CONCRETE PAVEMENT

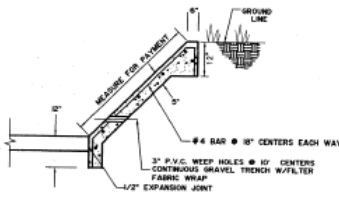
**PAVEMENT HEADER**

NTS



**EPOXY TIE BAR**

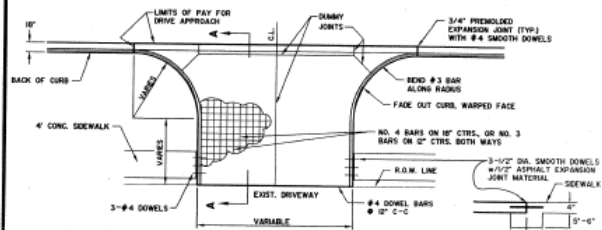
NTS



- NOTES:
1. STEEL TO BE TIED AND CHAIRED AS NECESSARY TO PLACE STEEL IN CENTER OF 5" SECTION.
  2. CONCRETE TO HAVE COMPRESSIVE STRENGTH OF 3,000 psi AT 28 DAYS
  3. PLACE CONTRACTION/DAMMY JOINTS AT 20' CENTERS AND MATCH EXPANSION JOINTS IN SIDEWALK (TYPICAL FOR 4" SIDEWALK)
  4. FENCE POSTS ARE NOT PERMITTED IN THE CONCRETE.

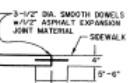
**TYPICAL RIP-RAP ADJACENT TO SIDEWALK**

NTS

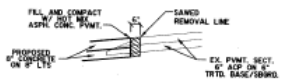


**TYPICAL DRIVE APPROACH CONSTRUCTED WITH A STREET**

NTS

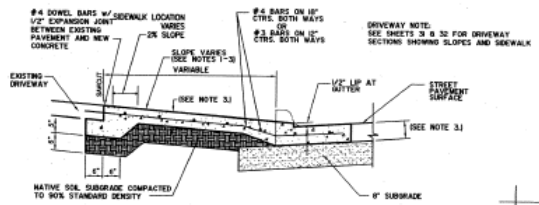


**TYPICAL SIDEWALK CONNECTION TO A**



**DETAIL PAVEMENT MATCH ON SIDE STREETS**

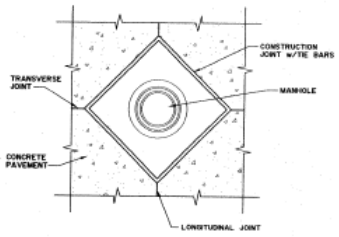
NTS



**SECTION 'A-A' (FOR TYPICAL DRIVE APPROACH)**

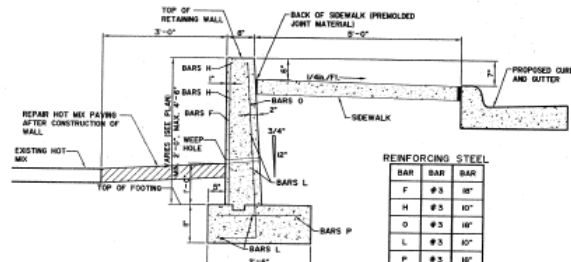
NTS

- NOTES:
- 1) THE SLOPE OF THE DRIVE WHERE SIDEWALKS CROSS SHALL BE A MAXIMUM 2%. SIDEWALK SHALL BE CONNECTED TO DRIVE WITH #4 BARS ON 10" CENTERS.
  - 2) REMOVE ANY EXISTING SIDEWALK AT NEAREST JOINT AND CONNECT REPLACED SECTION TO DRIVE WITH 3-#4 SMOOTH DOWELS WITH 1/2" PREFORMED EXPANSION MATERIAL.
  - 3) SLOPE MAY VARY SLAB THICKNESS 6"
- ALL OTHERS 3X 6"  
 ALSO SEE THE STREETS CHAPTER, SECTION 3.07.A, TABLE 1 FOR OTHER SPECIFIC CRITERIA



**MANHOLE BOXOUT**

SCALE: 1" = 4'-0"



REINFORCING STEEL

BAR	BAR	BAR
F	#3	10"
H	#3	10"
O	#3	10"
L	#3	10"
P	#3	10"

- NOTES:
1. ALL CONCRETE SHALL BE CLASS "A".
  2. CHAMFER EXPOSED CORNERS 3/4"
  3. PROVIDE CONTRACTION JOINTS IN FOOTING AND WALL AT 20' CENTERS.
  4. PROVIDE EXPANSION JOINTS AT 70' CENTERS.

**SPECIAL RETAINING WALL**

NORTH OF ARKANSAS LANE FROM STA 65+90 TO STA 67+80  
 SCALE: 1" = 2'-6"

MODIFIED FROM STANDARD CITY OF ARLINGTON DETAILS.



Schrickel, Rollins and Associates, Inc.  
 Landscape Architecture - Civil Engineering - Planning  
 130 Corporate Drive West  
 Suite 200  
 Arlington, Texas 76010  
 Phone: 817/443236  
 Metro: 817/402822  
 Fax: 817/467445



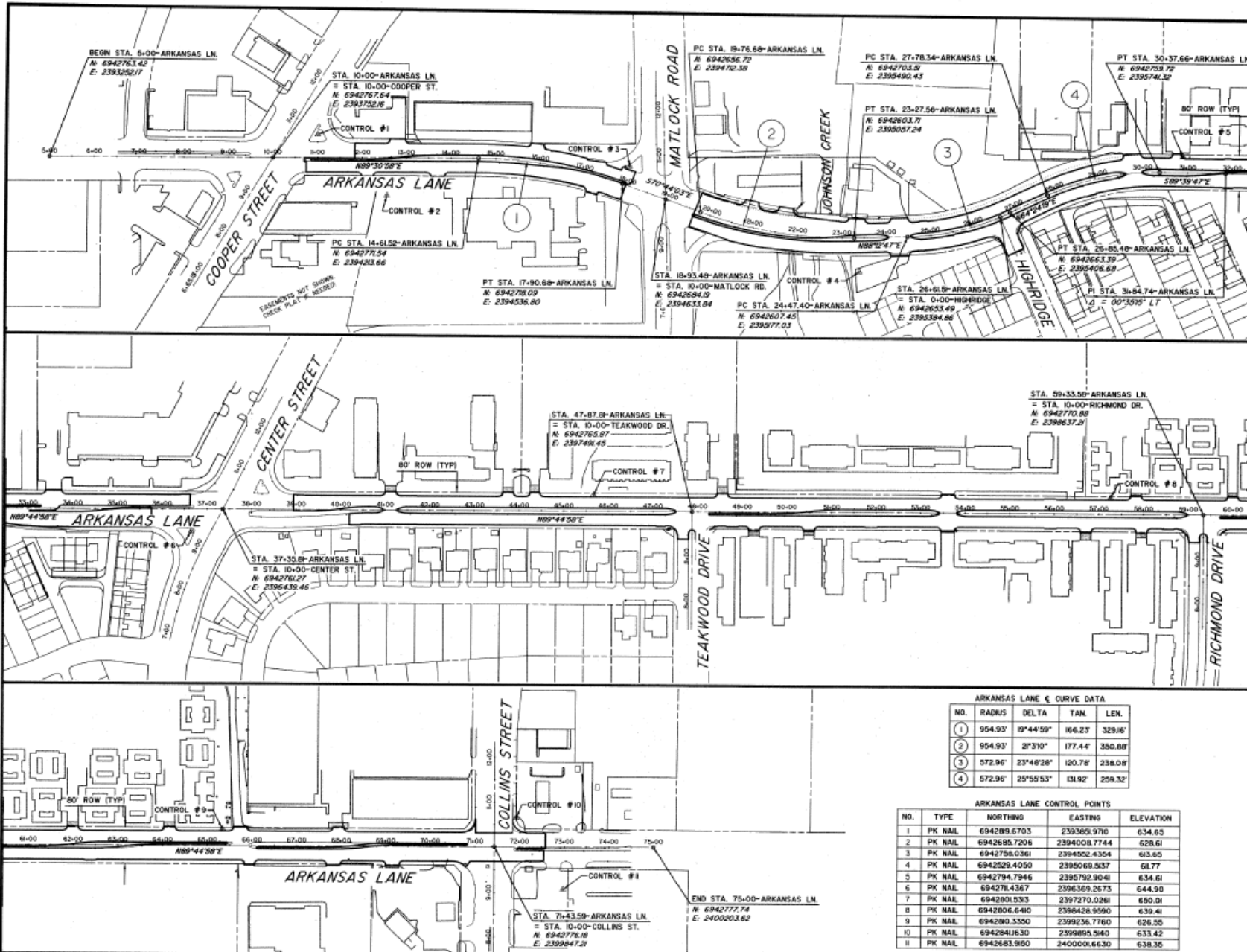
City of Arlington Texas  
 ARKANSAS LANE  
 (COOPER ST TO COLLINS ST)



DATE:	04-18-08
REVISED:	-
STATUS:	BD
DESIGN BY:	KAD
DRAWN BY:	KAD
JOB NO.:	4657
FILE NAME:	

**MISCELLANEOUS PAVING DETAILS**

SCALE:	N/A	HOR.
	N/A	VERT.
SHEET NO.:	3	



Schrickel, Rollins and Associates, Inc.  
 Landscape Architecture - Civil Engineering - Planning  
 1761 Corporate Drive West Phone 817-649-3276  
 Suite 200 Memo 817-649-3272  
 Arlington, Texas 76010 Fax 817-649-7445



0 50 100 200  
 GRAPHIC SCALE IN FEET



City of Arlington Texas  
**ARKANSAS LANE**  
 (COOPER ST TO COLLINS ST)



DATE: 04-18-08  
 REVISED: -  
 STATUS: BID  
 DESIGN BY: KAD  
 DRAWN BY: KAD  
 JOB NO.: 4657  
 FILE NAME:

**CONTROL POINTS AND ROADWAY CURVE DATA**

SCALE: HOR. VERT.  
 SHEET NO. **4**  
 OF 88

ARKANSAS LANE CURVE DATA

NO.	RADIUS	DELTA	TAN.	LEN.
1	954.93'	89°44'59"	166.23'	329.16'
2	954.93'	2°3'10"	177.44'	350.88'
3	572.96'	23°48'28"	120.78'	238.08'
4	572.96'	25°55'53"	131.82'	259.32'

ARKANSAS LANE CONTROL POINTS

NO.	TYPE	NORTHING	EASTING	ELEVATION
1	PK NAIL	694289.6703	239385.970	634.65
2	PK NAIL	694268.7206	239400.7744	628.61
3	PK NAIL	6942758.0361	2394252.4354	613.65
4	PK NAIL	6942529.4050	2395069.537	617.77
5	PK NAIL	6942794.7946	2395792.9046	634.61
6	PK NAIL	694278.4367	2396369.2673	644.90
7	PK NAIL	6942801.5353	2397270.0261	650.01
8	PK NAIL	6942806.6410	2396428.9590	639.41
9	PK NAIL	694280.3350	2399236.7760	626.55
10	PK NAIL	6942841.630	2399895.5160	633.42
11	PK NAIL	6942683.9650	2400001.6630	638.36



Schrickel, Rollins and Associates, Inc.  
 Landscape Architecture - Civil Engineering - Planning  
 1161 Corporate Drive West Phone: 817-643-1216  
 Suite 200 Metro: 817-643-8212  
 Arlington, Texas 76006 Fax: 817-649-7645



**City of Arlington Texas**  
**ARKANSAS LANE**  
 (COOPER ST TO COLLINS ST)

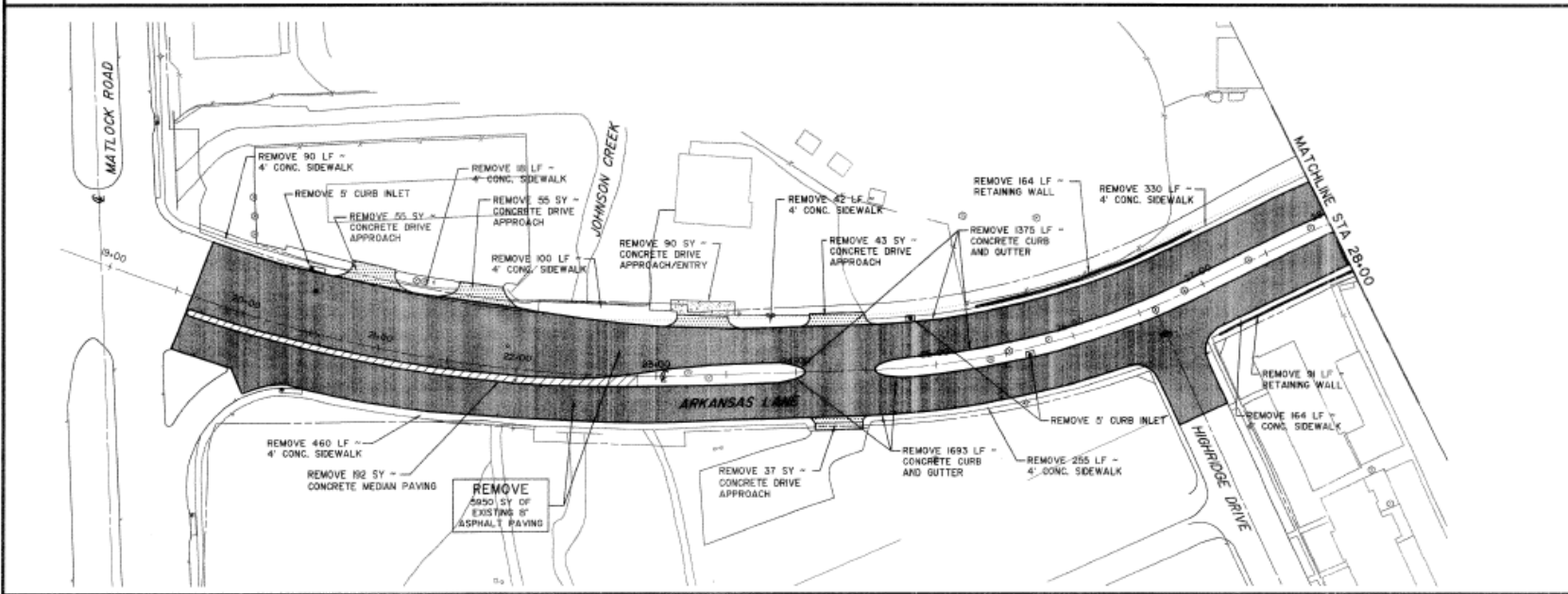
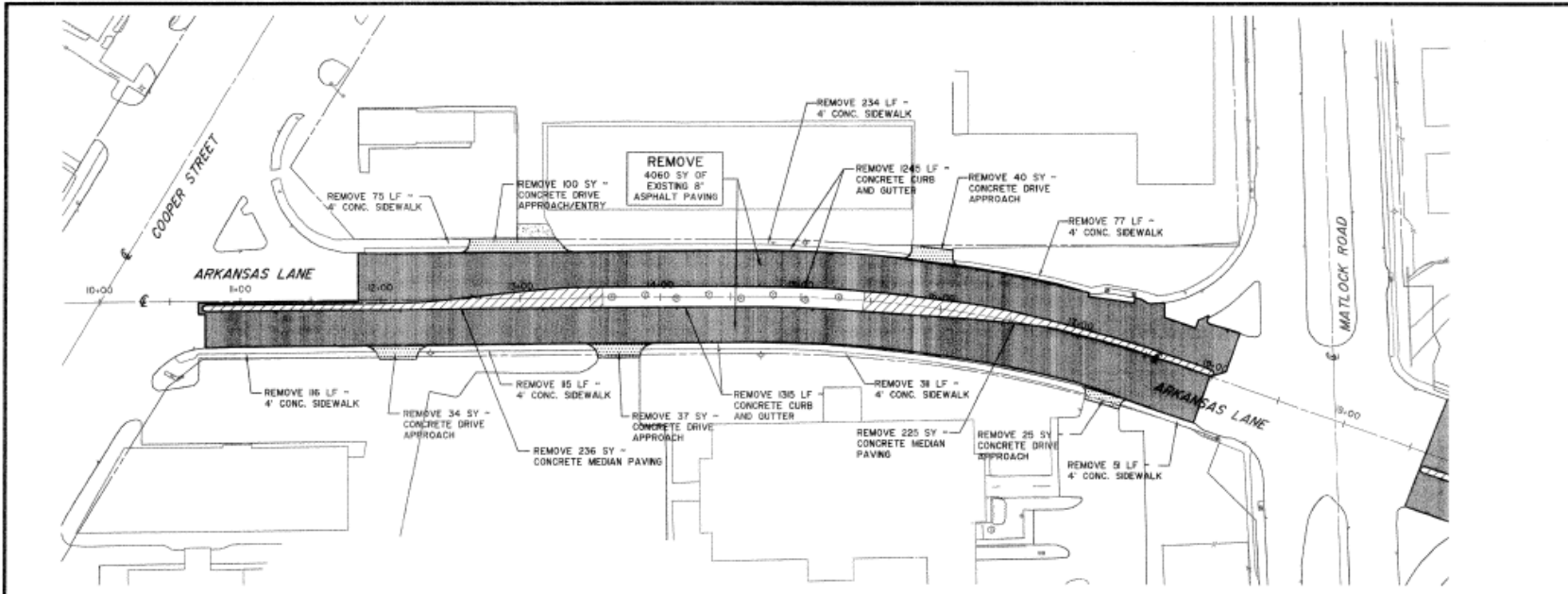
*Joseph E. Binsley*  
 JOSEPH E. BINSLEY  
 06035  
 1/2/08

DATE:	07-02-08
REVISED:	-
STATUS:	BD
DESIGN BY:	KAD
DRAWN BY:	KAD
JOB NO.:	4657
FILE NAME:	

**REMOVAL LAYOUT**  
 STA 10+00 TO STA 28+00

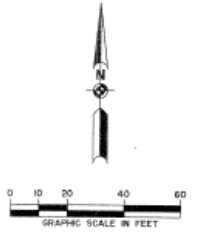
SCALE:  $1" = 20'$  HOR.  
 N/A VERT.

SHEET NO. **5**  
 OF 88





Schrickel, Rollins and Associates, Inc.  
 Landscape Architecture - Civil Engineering - Planning  
 1761 Corporate Drive West Suite 200  
 Arlington, Texas 76016  
 Phone: 817/493,3276  
 Metro: 817/490,8272  
 Fax: 817/493,7445



City of Arlington Texas  
 ARKANSAS LANE  
 (COOPER ST TO COLLINS ST)

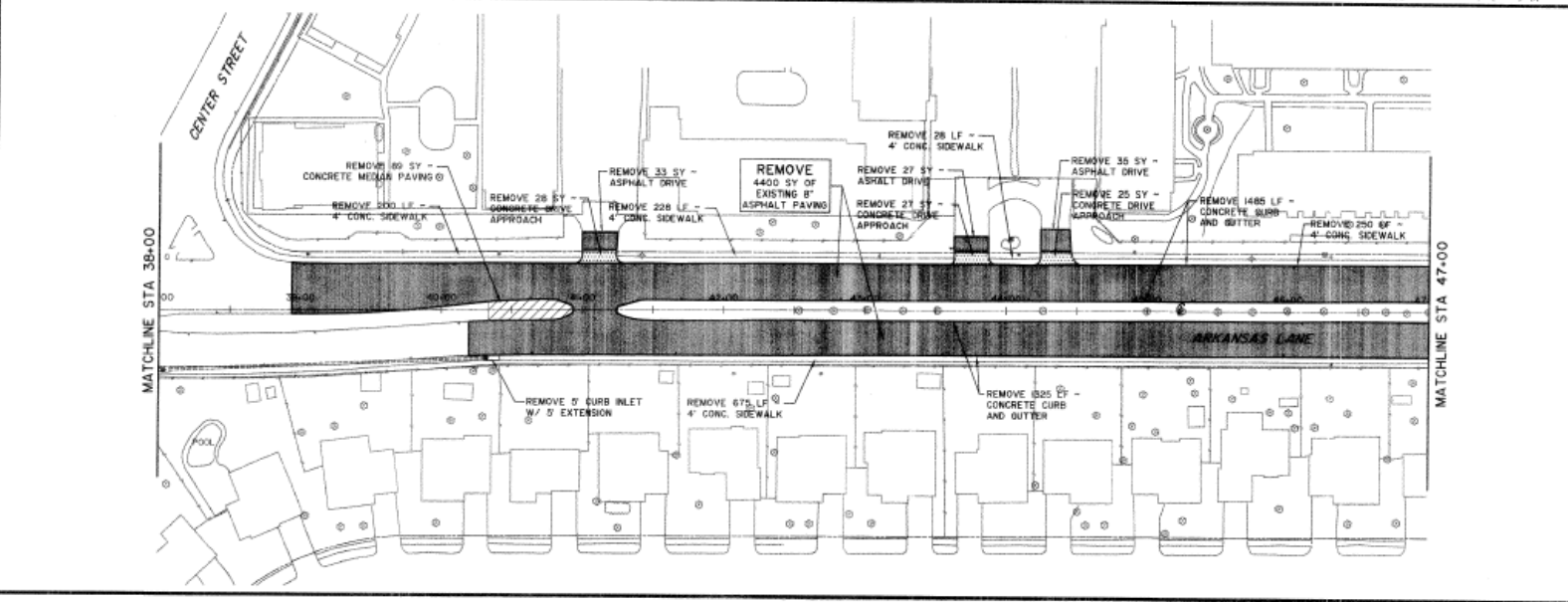
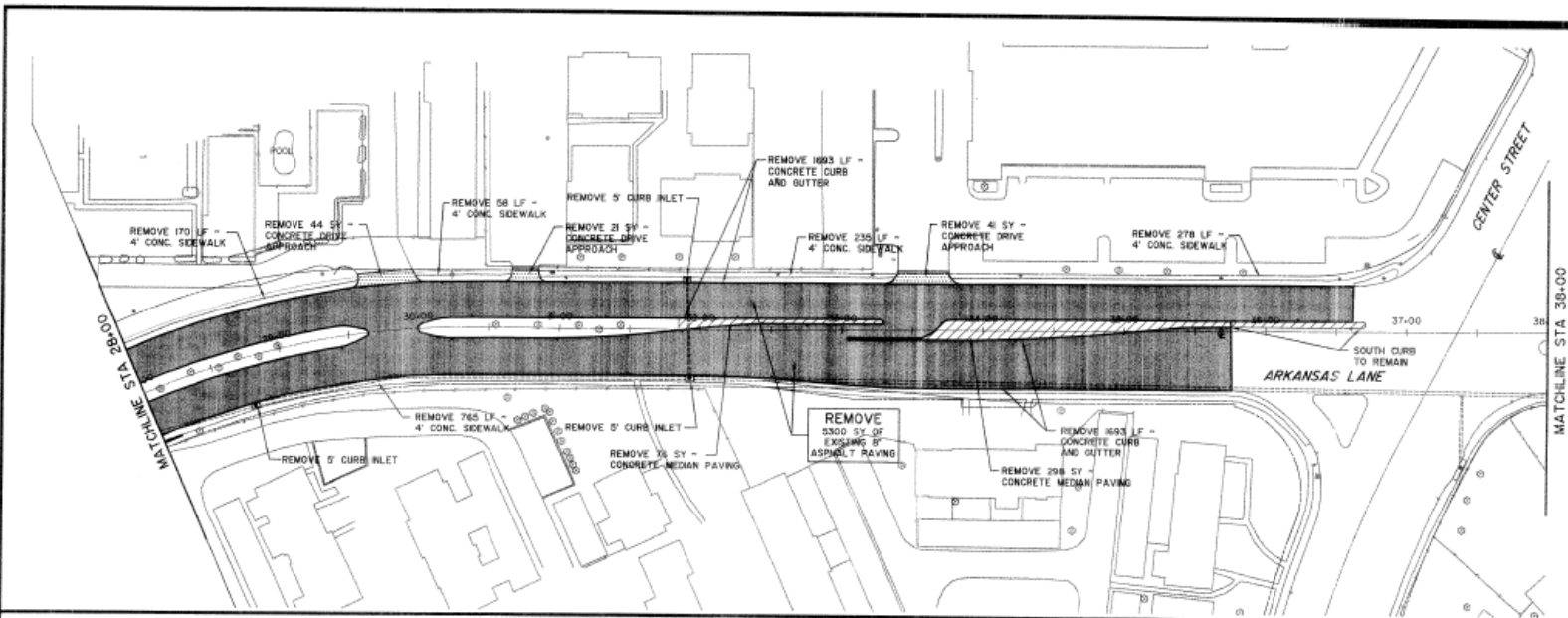


DATE:	07.02.08
REVISED:	-
STATUS:	81D
DESIGN BY:	KAD
DRAWN BY:	KAD
JOB NO.:	4657
FILE NAME:	

**REMOVAL LAYOUT**  
 STA 28+00 TO STA 47+00

SCALE: T<sup>1</sup> = 20' HOR.  
 N/A VERT.

SHEET NO. **6**  
 OF 85



**Archived Public Complaints: Identifying Information Removed**

<b><u>Issue</u></b>	<b><u>Description</u></b>	<b><u>Street</u></b>	<b><u>Division</u></b>
Pothole	large pot hole in front of Jamaican Gates at 1020 W. Arkansas.	W Arkansas Ln	Streets
Pothole	CITIZEN reported a pot hole at WB Arkansas and Cooper. She stated that her car finder needed to be fixed and waned information for that. I provided the process for claims online.	W Arkansas Ln	Streets
Standing Water	thank you for fixing 2 of the water leaks. there is one more and water runs onto arkansas lane but not as bad as before you fixed the other 2 leaks. appreciate you help.	E Arkansas Ln	Stormwater Administration
Pothole	Arkansas just East of Collins in the Eastbound lanes	E Arkansas Ln	Streets
School Zone Signs / Flashers Not Working	On the intersection of sherry and Arkansas there is a school crossing guard that sits in his white cars and does not cross the kids. This is an every day thing that he sits in his car in the morning and afternoon. This intersection is a busy intersection and cars tend to drive fast. Can you please assign a cross guard that will actually help the kids get across safety.	E Arkansas Ln	Signals
School Zone Signs / Flashers Not Working	On the intersection of sherry and Arkansas there is a school crossing guard that sits in his white cars and does not cross the kids. This is an every day thing that he sits in his car in the morning and afternoon. This intersection is a busy intersection and cars tend to drive fast. Can you please assign a cross guard that will actually help the kids get across safety.	E Arkansas Ln	Signals
Streetlight Burned Out	Streetlight out	E Arkansas Ln	Street Lights
Streetlight Burned Out	Lights are out from Carter to Sherry	E Arkansas Ln	Street Lights
Traffic Signal Not Working	Hello This Traffic lights it's not working right take me 15 minutes of waiting and nothing I have to change to the left lane and I see cars still waiting Please fixed this.	E Arkansas Ln	Signals
Traffic Signal Not Working	This signal always makes east and west bound traffic wait keeping the south bound green with out any cars traveling south.	E Arkansas Ln	Signals
Street Sign Repair	speed limit sign bent at 45 degree angle s of eskimo hut ON cooper/arkansas Sign Repair Types: All other Signs	W Arkansas Ln	Signs
Traffic Signal Not Working	Light turns red so quickly & No Green Arrow in the afternoon when turning onto (left) W Arkansas. So only 1 car is able to turn!	E ARKANSAS LN & S CENTER ST	Signals

Street Failure	west bound lanes on Arkansas just past Cooper St. Citizen says there is a rough transition here.	W Arkansas Ln	Streets
Debris or Obstacle Removal	Tree limb hanging in roadway	E Arkansas Ln	Streets
Traffic Signal Not Working	This signal always stops me when I'm going eastbound given a green to the south direction when there's no cars traveling south.	E Arkansas Ln	Signals
Traffic Signal Not Working	On the west bound lights one is missing the cover that goes by the LED .	E Arkansas Ln	Signals
Debris or Obstacle Removal	Abandoned clothes dryer dumped in grassy parkway. Southbound lane of Matlock at corner of Arkansas Lane.	W Arkansas Ln	Streets
Pothole	Pothole at intersection. Said the previous patch has sunk	E Arkansas Ln	Streets
Debris or Obstacle Removal	Glass in the road from Allen South towards he elementary school	E Arkansas Ln	Streets
Traffic Signal Not Working	I've been having issues with this signal, I'm in the slow lane going north and I'll be the only car there and I don't get a green.	S CENTER ST & E ARKANSAS LN	Signals
Pothole	Pothole reported.	E ARKANSAS LN & DANIEL DR	Streets
Pothole	fix the road	W Arkansas Ln	Streets
Pothole	Pothole reported.	E Arkansas Ln	Streets
Traffic Signal Not Working	West bound left turn the red arrow is not working	E Arkansas Ln	Signals
Streetlight Burned Out	Streetlight out at the back on the senior living center. It appears to be in the city right of way.	W Arkansas Ln	Street Lights
Pothole	On the corner of Danial and Arkansas Lane east bound there is a pot hole where the asphalt has sunk but the concrete has not. I hit it last Saturday night about 7 o'clock at about 35 miles per hour it jarred my car so bad that it cracked my windshield. Please fix it before somebody gets hurt are more cars get damaged.	E Arkansas Ln	Streets
Traffic Signal Not Working	Eastbound signal not working	E Arkansas Ln	Signals
Request a Traffic Signal	Please time the traffic light its only allowing two buses to enter and or exit the compound!	W Arkansas Ln	Traffic Engineering
Pothole	multiple potholes in both directions of traffic around this intersection on Arkansas	W Arkansas Ln	Streets



Streetlight Burned Out	Many sections of lights out all along Arkansas. Too many to list. Please do a night run and observe the issues.	E Arkansas Ln	Street Lights
Pothole	Large and deep. Right lane on Arkansas immediately before Cooper headed east. In front of Eskimo hut	W Arkansas Ln	Streets
Pothole	Large pothole in road just west of Copper	W Arkansas Ln	Streets
Traffic Signal Not Working	the left turn arrow does not come on. All you get is a yellow flashing light and when employees are coming out of the Arlington Independent School District Annex where buses are kept it's very difficult to turn left from Davis when you don't get an arrow	W Arkansas Ln	Traffic Engineering
Street Failure	Caller said that the whole street on Arkansas near Cooper needs to be done.	W Arkansas Ln	Streets
Storm Drainage System Maintenance	trees growing in concrete storm drainage behind the car wash. The apt complex is very concerned and is afraid of flooding again because of all the debris in the concrete channel	W Arkansas Ln	Stormwater Operations
Pothole	Intersection of Browning-Arkansas & various other potholes on Browning from 303-Arkansas.	E Arkansas Ln	Streets
Streetlight Knocked Down	This pole been down for a long time is in the corner of Arkansas and Cooper the first pole to the west of Cooper on Arkansas Ln.	W Arkansas Ln	Street Lights
Traffic Signal Not Working	Intersection of Arkansas and Browning heading East has a red streetlight that is burned out.	E Arkansas Ln	Signals
Debris or Obstacle Removal	Pile of nails in roadway	E Arkansas Ln	Streets
Debris Removal	There is large amount of trash all along the side of Carter Dr and E Arkansas Ln, it's sitting on the side of the road and side walks, there is also tall grass that hasn't been mowed along the sidewalks. It's filthy.	E ARKANSAS LN & CARTER DR	Streets
Traffic Signal Not Working	The pedestrian light at this intersection is not working properly. When crossing Collins from the SW corner to SE corner, the button does not activate the signal. Cars don't yield when they don't see the pedestrian signal.	E Arkansas Ln	Signals
Traffic Signal Not Working	Turn signal on east light doesn't work at all	W Arkansas Ln	Signals
Pothole	East bound on Arkansas Ln between Daniel and Allen in the right lane - huge pothole	Arkansas Ln	Streets
Pothole	SE corner of the intersection; roadway damage resulting is substantial pothole	E ARKANSAS LN & DANIEL DR	Streets

Traffic Signal Not Working	the southbound left turn gets a green arrow with no cars present and it stays green for a long time. noticeable early morning around 6am	MATLOCK RD & W ARKANSAS LN	Signals
Traffic Signal Not Working	the westbound light turns green with no cars present	W ARKANSAS LN & S COOPER ST	Signals
Storm Drainage System Maintenance	concrete drainage ditch in between car wash and apartment complex carwash is on Arkansas and Apt complex has a pioneer address	W Arkansas Ln	Stormwater Operations
Traffic Signal Not Working	Red light not working.	W Arkansas Ln	Signals
Street Sign Down or Missing	Right Turn Only sign knocked down in grass. Davis Drive at Arkansas Lane. We need to fix a: Street Sign Knocked Down	W Arkansas Ln	Signs
Streetlight Burned Out	All Streetlights between matlock and center on Arkansas are unlit	W Arkansas Ln	Street Lights
Street Light Burnout or Knockdown	Street Light Burnout or Knockdown	E Arkansas Ln	Street Lights
Traffic Signal Not Working	red turn light not working. when driving eastbound to turn north on collins.	E Arkansas Ln	Signals
Pothole	On carter entering into kroger parking lot. I had requested a repair and it had been done. But looks to have been a sloppy job. Or incomplete one.	E Arkansas Ln	Streets
Pothole	The pot hole is at the edge of the parking lot on carter dr. Entering in to Kroger shopping center. ( High Park Village). In the evening you can't see it and it is rather large and deep.	E Arkansas Ln	Streets
Traffic Signal Not Working	This problem was observed on 3-28-19 around 7PM. The traffic signal was staying green much too long toward Davis St. To make matters worse, when it did turn green for Arkansas, it gave a left turn arrow for east bound Arkansas even though there were no vehicles in the LT lane. Even at 7PM there were about 20 vehicles that had collected on Arkansas because of this wait.	W Arkansas Ln	Signals
Traffic Signal Not Working	Red light burned out on southbound Browning at Arkansas	E Arkansas Ln	Signals
Streetlight Burned Out	ALL street lights INOP on E. Arkansas Ln. between Center and Richmond Dr.	E Arkansas Ln	Street Lights
Traffic Signal Not Working	The traffic lights at Davis-Arkansas are severely outdated and there are constant major wrecks because of the lack of turn signals and mis-cycling of the lights.	W Arkansas Ln	Information Services

	Taking left turns off Arkansas is a guessing game and always a risk especially in 3-5pm traffic. Please fix or replace these lights.		
Standing Water	1115 W Arkansas Ln, Arlington, TX 76013 Water runoff into the street. Could create a frozen spot on Arkansas Lane during freezing weather. Observed on Nov 21 and several days before that.	W Arkansas Ln	Streets
Standing Water	Water runoff into the street on Arkansas Lane. Coming from dwellings on the south side of the street. Could create an icy spot on Arkansas during freezing weather. This leak was observed on Nov 21 and for several days before that.	W Arkansas Ln	Streets
Pothole	Pothole on Browning SB between Arkansas and Pioneer	E Arkansas Ln	Streets
Pothole	Pothole between Browning and Ozark on Arkansas	Arkansas Ln	Streets
Graffiti On Sidewalk	On "wall" along sidewalk	W Arkansas Ln	Streets
Street Failure	Caller said last Saturday (5-26) he was traveling westbound on Arkansas approx. 1-4 mile east of Hwy 360 and hit an uneven road. He said his rim was damaged. He said the road is so uneven that his tire went off the side of it.	E Arkansas Ln	Streets
Pothole	Accela 4152558 Pot Hole is in RIGHT lane at the white line for stopping. south bound lane of Matlock Rd at W Arkansas Ln	W Arkansas Ln	Information Services
Pothole	Pothole is in the left hand lane of the south bound direction of Maltlock Rd @ intersection W Arkansas Ln, North side of intersection.	W Arkansas Ln	Streets
Streetlight Burned Out	caller left a message that all lights on Hwy 360 between Arkansas and Mayfield are out and they are also out on the service road in that area.	E Arkansas Ln	Street Lights
Standing Water	Water ponding in street and gutters in the mornings on east bound Arkansas Lane. Appears to be coming from the apartments on the south side of Arkansas.	E Arkansas Ln	Streets



## Virtual Field Exercise (VFE) C: Road Safety Audit Workshop: Bicycle and Pedestrian

Virtual Workshop: 4/27–4/29

### Roadway Summary

This study area is along Hemphill Street, from W. Allen Avenue to Jessamine Street, just south of downtown in the South Main District of Fort Worth, Texas. Travel direction is from north to south along the 4-lane, minor arterial, with 2 travel lanes in each direction.

The speed throughout the entire section is 40 mph. Sidewalk facilities are existing throughout the corridor; however, conditions vary, and some locations are deficient (see photos).

There are a range of land uses throughout the corridor, which are symbolized by the map/legend below. Annual Average Daily Traffic (AADT) is inconsistent with northbound AADT ~6,000 trips higher than southbound traffic, ranging from 13,767 to 7,761.

There were 13 reported non-fatal pedestrian crashes along the selected route between 2015 and 2019, with 6 pedestrian crashes at the intersection of Hemphill and Allen alone.

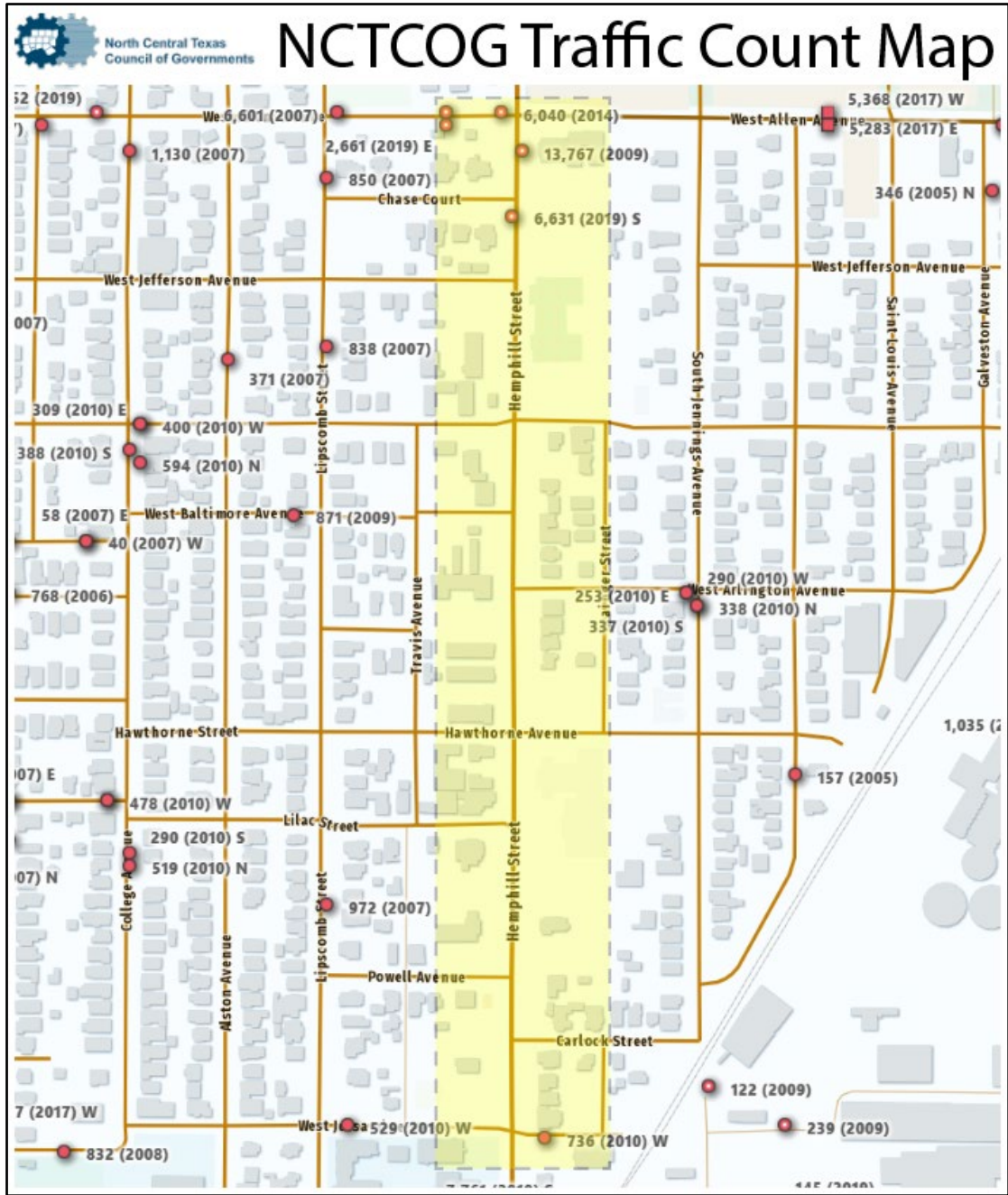
### Crash Data

<b>Bicycle and Pedestrian Crashes Reported on Route: 2015-2019</b>			
<b>Year</b>	<b>Bicycle</b>	<b>Pedestrian</b>	<b>Total</b>
2015	0	2	2
2016	0	1	1
2017	0	3	3
2018	0	3	3
2019	0	4	4
<b>Total</b>	<b>0</b>	<b>13</b>	<b>13</b>

Hemphill Street in Fort Worth, TX, from W Allen Avenue to Jessamine Avenue



AADT for Selected Roadway Segment

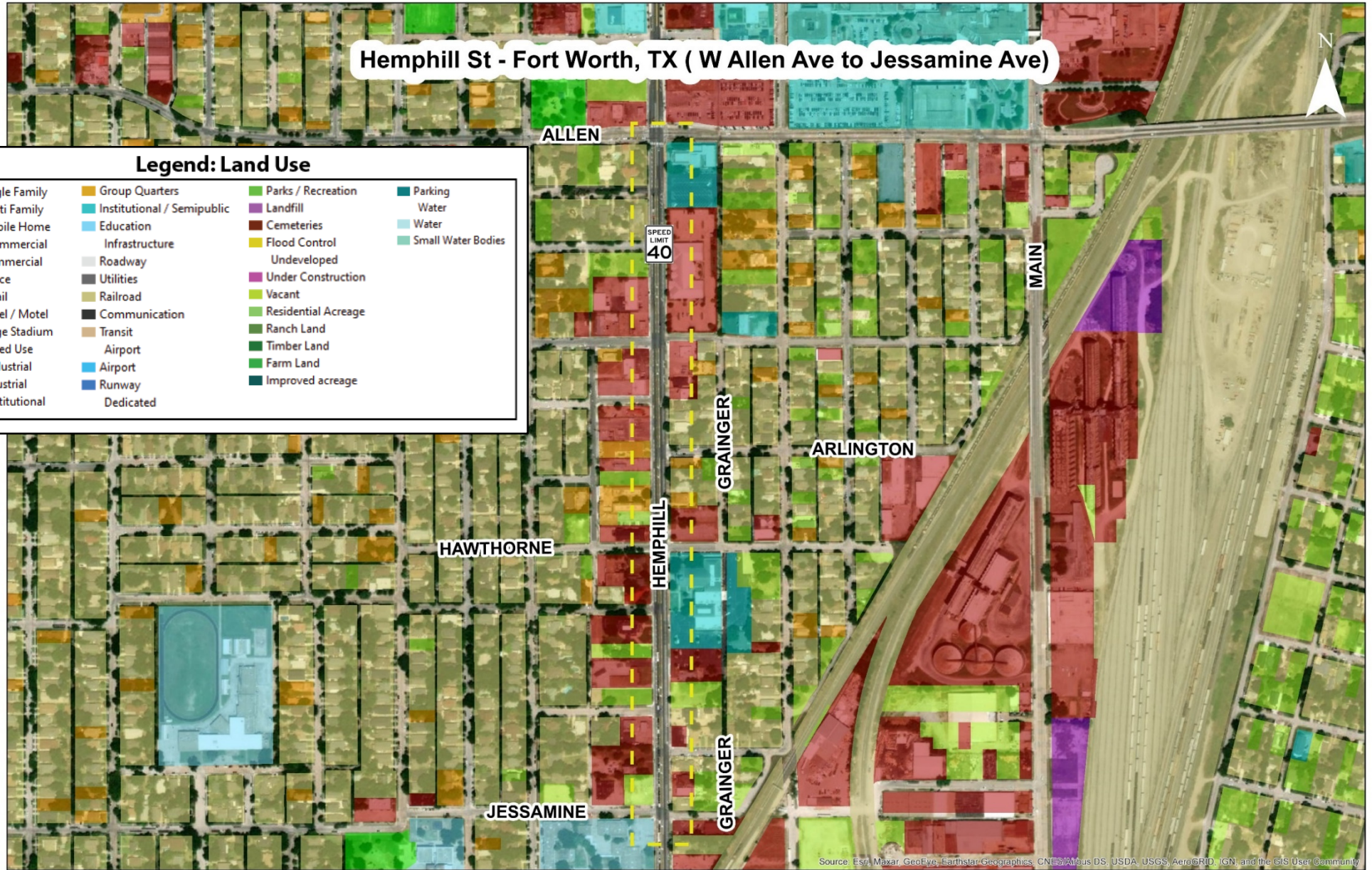


Patterns of Land Use

**Hemphill St - Fort Worth, TX ( W Allen Ave to Jessamine Ave)**

**Legend: Land Use**

Single Family	Group Quarters	Parks / Recreation	Parking
Multi Family	Institutional / Semipublic	Landfill	Water
Mobile Home	Education	Cemeteries	Water
Commercial	Infrastructure	Flood Control	Small Water Bodies
Commercial	Roadway	Undeveloped	
Office	Utilities	Under Construction	
Retail	Railroad	Vacant	
Hotel / Motel	Communication	Residential Acreage	
Large Stadium	Transit	Ranch Land	
Mixed Use	Airport	Timber Land	
Industrial	Airport	Farm Land	
Industrial	Runway	Improved acreage	
Institutional	Dedicated		



Source: Esri, Maxar, GeoEye, Earthstar, GeoGraphics, CNES/Airbus DS, USDA, USGS, AeroGRID, IGN, and the GIS User Community



## Existing Conditions

Figure 1: Pedestrian facilities are inconsistent and do not provide a buffer, however, sidewalks are wide enough for users to not be near the road.



Figure 2: Existing pedestrian facilities lack ADA compliance and lack a buffer between road and sidewalk. Curbs are low and road striping is non-existent.



**Figure 3:** Pedestrian facility is not ADA compliant and damaged sidewalk poses a danger to users. Pedestrians are forced to walk closer to edge of sidewalk or onto private property to avoid this area. No buffer between road and road striping is non-existent.

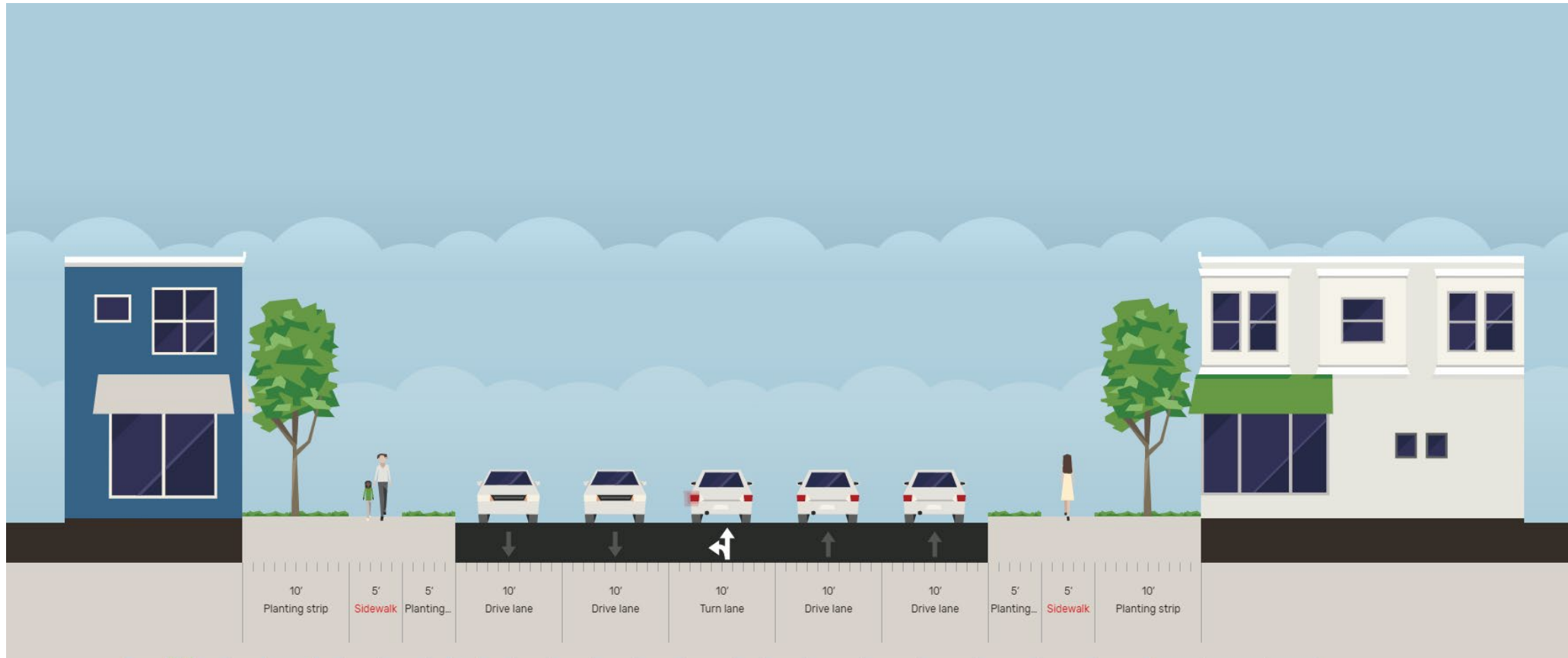


**Figure 4:** No connecting pedestrian facility on the corner of Jessamine and Hemphill, sidewalk is not ADA compliant. Vegetation has overrun much of the sidewalk. Road striping is deficient.



**Cross Section**

**Existing:**



Supplemental Information: Proposed speed limit change

City of Fort Worth, Texas

## Mayor and Council Communication

**DATE:** 10/27/20

**M&C FILE NUMBER:** M&C 20-0791

**LOG NAME:** 20HEMPHILL STREET SPEED LIMIT CHANGE

### **SUBJECT**

(CD 9) Adopt an Ordinance Amending Chapter 22 Motor Vehicles and Traffic, Article III Operation of Vehicles, Section 22-86 Speeding, Subsection (i) of the Code of the City of Fort Worth, Texas (2015), as Amended, to Add the Speed Limits of Certain Speed Zones, Specifically a New Speed Limit of 35 Miles per Hour Along Hemphill Street from West Vickery Boulevard to West Felix Street

---

### **RECOMMENDATION:**

It is recommended that the City Council adopt the attached ordinance amending Chapter 22 Motor Vehicles and Traffic, Article III Operation of Vehicles, Section 22-86 Speeding, Subsection (i) of the Code of the City of Fort Worth, Texas (2015), as amended, to add the speed limits of certain speed zones, specifically a new speed limit of 35 miles per hour along Hemphill Street from West Vickery Boulevard to West Felix Street.

---

### **DISCUSSION:**

In collaboration with the Hemphill Corridor Task Force and Near Southside Inc., the City is working to balance multimodal transportation safety, better respond to the community needs to calm traffic along Hemphill and make the street more pedestrian and bicycle friendly.

The purpose of this Mayor and Council Communication (M&C) is to amend the City Code of Ordinances to reflect a 35 miles per hour (mph) posted speed along Hemphill Street from West Vickery Boulevard to West Felix Street. The current posted speed limit is 40 mph. This change is needed to align the City Ordinance with the 35 mph design speed of the recently implemented Hemphill Complete Streets project. School Zone speed limits found in Chapter 22 Motor Vehicles and Traffic, Article III Operation of Vehicles, Section 22-86 Speeding, Subsection (h) of the Code of the City of Fort Worth, Texas (2015), as amended, shall not be affected.

The complete streets project transformed Hemphill from a five-lane roadway to one through lane in each direction with a center left-turn lane, on-street parking, and bike lanes in both directions. The Transportation and Public Works Department commenced striping on Hemphill May 2020 and the project was completed July 2020.

On November 13, 2018, an Informal Report was presented to City Council to inform them of the proposed lane configuration change.

This change to the ordinance serves COUNCIL DISTRICT 9.

A Form 1295 is not required because: This M&C does not request approval of a contract with a business entity.

---

### **FISCAL INFORMATION / CERTIFICATION:**

The Director of Finance certifies that approval of this recommendation will have no material effect on City funds.

**Submitted for City Manager's Office by:** Dana Burghdoff 8018

