



NCTCOG Recovery Summit and Tabletop Exercise

January 15, 2020



North Central Texas
Council of Governments

Welcome and Introductions

- Preston Cook, Lead Facilitator, IEM



PURPOSE

Validate NCTCOG Recovery Framework by assessing capabilities of North Central Texas jurisdictions and regional stakeholders to recover from a tornado outbreak affecting the region.



SCOPE

- Focus on recovery roles, responsibilities, and actions of government and NGO partners
- Three modules



CORE CAPABILITIES



PARTICIPANTS

- Players
 - Respond to scenario based on current plans and policies, experience, or training
- Observers
 - Encouraged to gather ideas for further consideration
 - May participate in hotwash at end of TTX



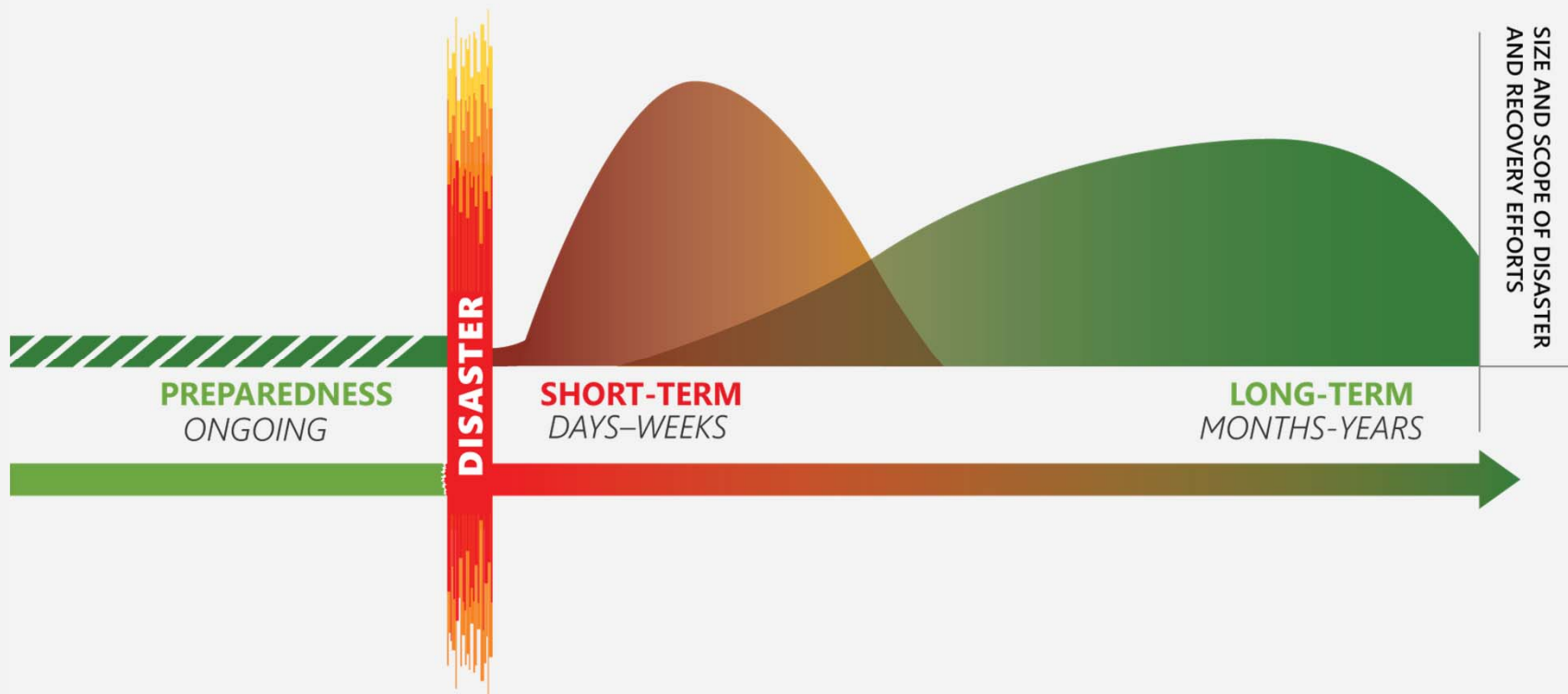
PARTICIPANTS

- Lead Facilitator
 - Provides scenario updates and resolves questions
 - Moderates brief-back period
- Floating Facilitators
 - Provide clarification and guidance
- Evaluators
 - Observe and record player discussions



EXERCISE STRUCTURE

THREE MODULES: PHASES OF RECOVERY



MODULE STRUCTURE

1. Module introduction
2. Table discussions
3. Brief back
4. Repeat



EXERCISE GUIDELINES

- Open, low-stress, no-fault environment
- Varying viewpoints
- Respond based on knowledge of current capabilities or training
- Decisions not precedent-setting
- Discuss multiple options and solutions
- Suggest actions that could improve efforts
- Focus on problem-solving
- Discussion questions are a guide—DO NOT need to answer all questions



ASSUMPTIONS AND ARTIFICIALITIES

- The scenario is plausible
- Events occur as presented
- No hidden agendas or trick questions
- All participants receive information at the same time



EXERCISE SCHEDULE

Time	Activity
12:15 p.m.	Module 1: Response to Recovery Transition and Immediate Recovery Actions
1:40 p.m.	Module 2: Short-term Recovery
2:50 p.m.	Module 3: Long-term Recovery
4:00 p.m.	Hot Wash
4:15 p.m.	Adjourn





Module 1: Response to Recovery Transition and Immediate Recovery Actions



North Central Texas
Council of Governments

Friday, Jan. 10
12:30 A.M. 0 Hours

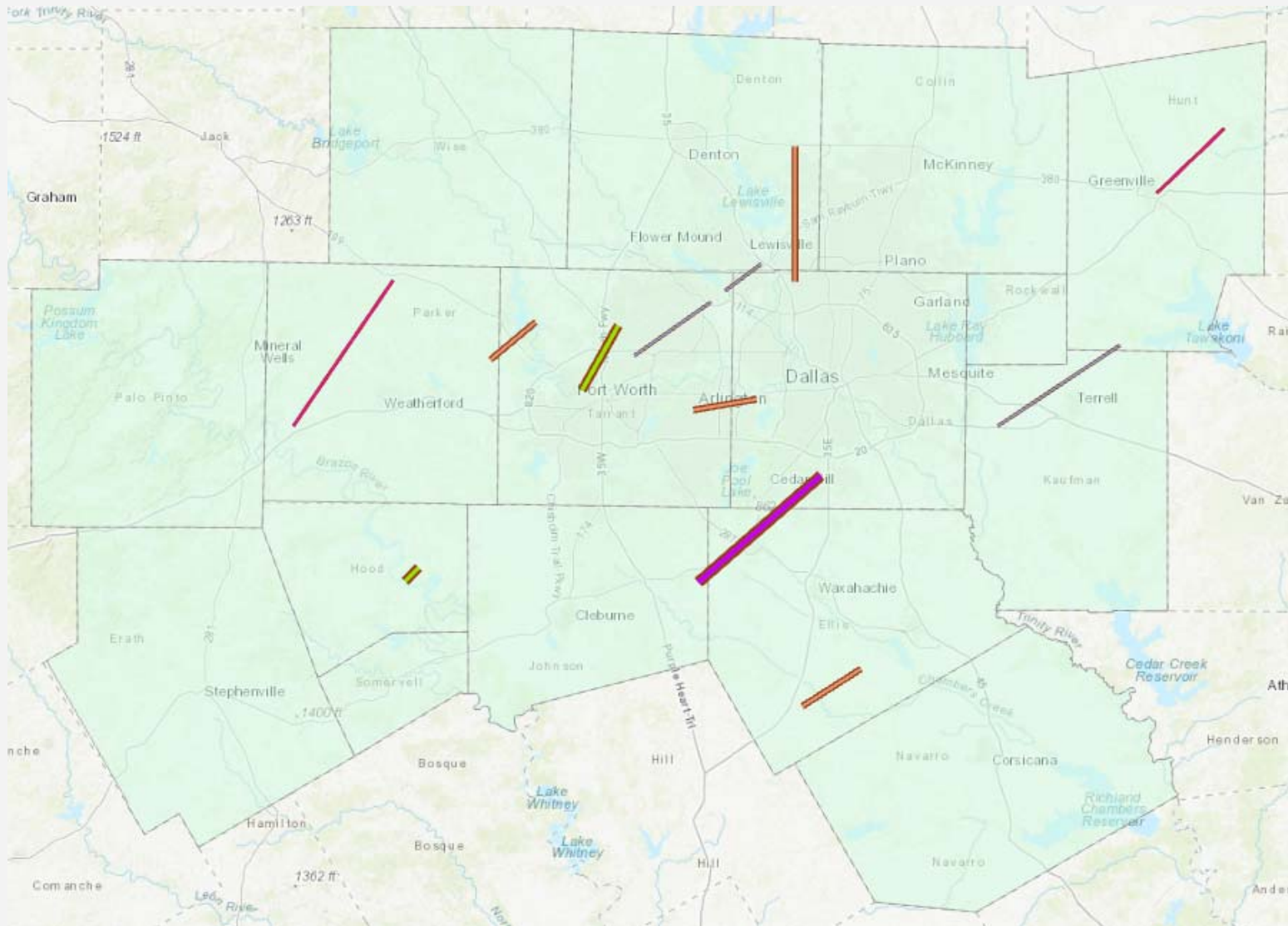
- Rare tornado outbreak
- Storm Prediction Center warned of possible severe weather
- From midnight to 2 a.m., numerous counties received tornado warnings



**North Central Texas
Council of Governments**



TORNADO PATHS



EF-Scale

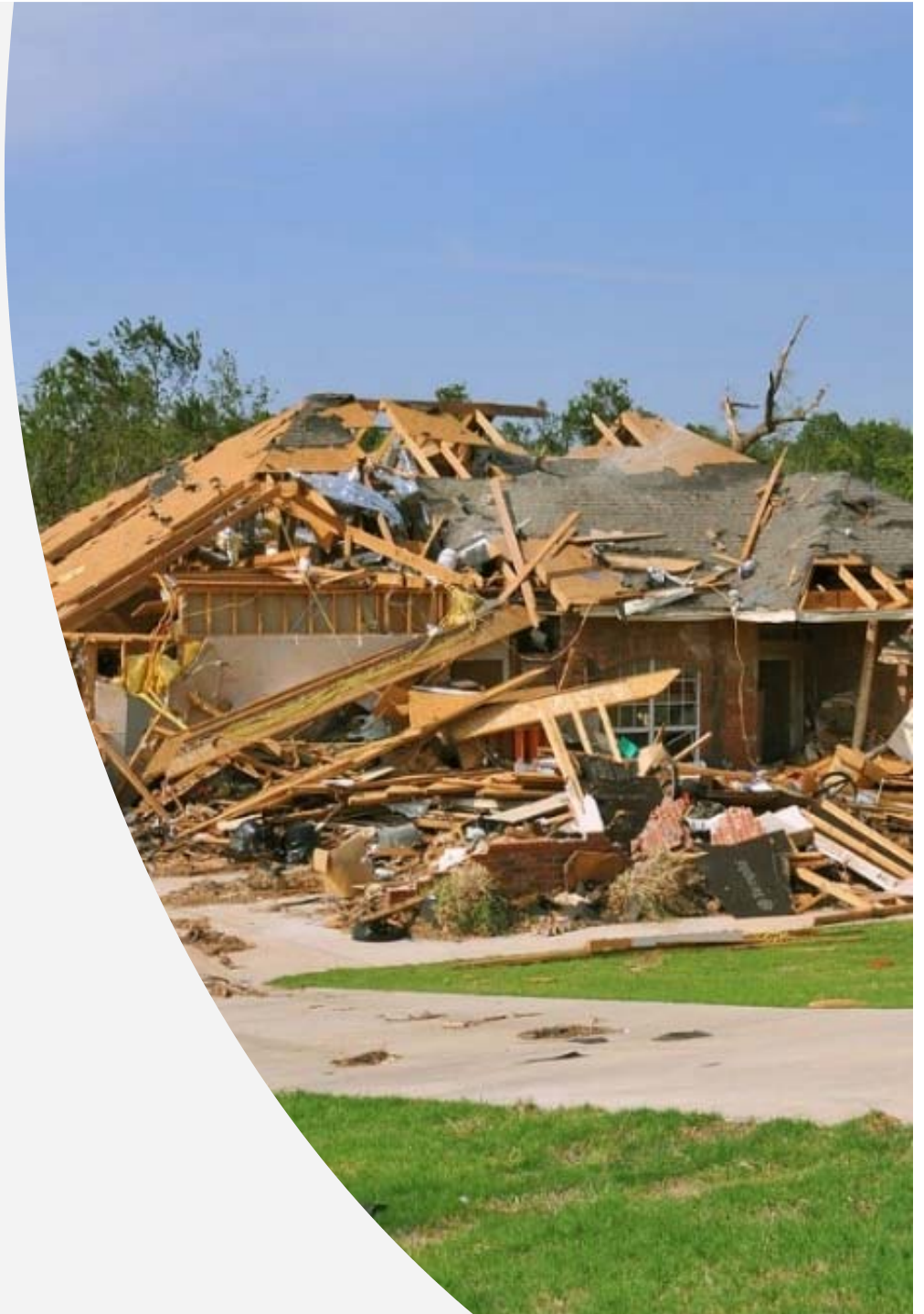
-  ≤1
-  ≤2
-  ≤3
-  ≤4
-  ≤5



**North Central Texas
Council of Governments**

Friday, Jan. 10
7:00 A.M.
+6.5 Hours

- As day breaks, damage becomes clear
- Extensive damage throughout region
- Ongoing localized flooding



**North Central Texas
Council of Governments**



IMMEDIATE IMPACTS

- 10%–15% of housing is damaged
- Significant infrastructure damage
- 40% without electricity
- 25% without water
- Heavy debris
- Historic sites heavily damaged
- Hospitals, schools, and major highways affected



**North Central Texas
Council of Governments**



Friday, Jan 10 5:30 p.m. +17 Hours

- All critical care patients rescued and transported
- Hospitals overwhelmed with EMS
- 9-1-1 centers inundated with phone calls looking for loved ones
- Hundreds arrive at hospitals searching for loved ones



Wednesday, Jan 15 +5 Days

- Life-saving measures—including searches and rescues and EMS operations—have been completed
- Power has been restored to the majority of residents, but 10% of habitable structures still do not have power



Wednesday, Jan 15 +5 Days

- Local officials conduct initial damage assessments in preparation for arrival of state and federal agencies



Table Discussions

- Discussion questions on pages 6 through 8 of SitMan are a guide—no need to follow precisely or finish all of them
- Choose a spokesperson who will provide a 5-minute brief-back to the larger group
- The next module will then be introduced





Module 2: Short-term Recovery



North Central Texas
Council of Governments

February 10 +1 Month

- Since Presidential declaration, local governments have been working closely with state and federal partners
- Trash piling at curbs and dumpsters line streets
- Contractors in short supply, hotels booked, and many residents still looking for interim housing



**North Central Texas
Council of Governments**

RECOVERY ISSUES

- Conflicting information on insurance, homeowners assistance, and low-interest loans
- Supply chain and infrastructure disruptions
- Gas and cleaning supplies shortages
- Unverified websites solicit donations and offer assistance to businesses and residents



RECOVERY ISSUES

- Dozens of significantly damaged schools transitioning students to alternate locations



Table Discussions

- Discussion questions on pages 9 through 11 of SitMan are a guide—no need to follow precisely or finish all of them
- Choose a spokesperson who will provide a 5-minute brief-back to the larger group
- The next module will then be introduced





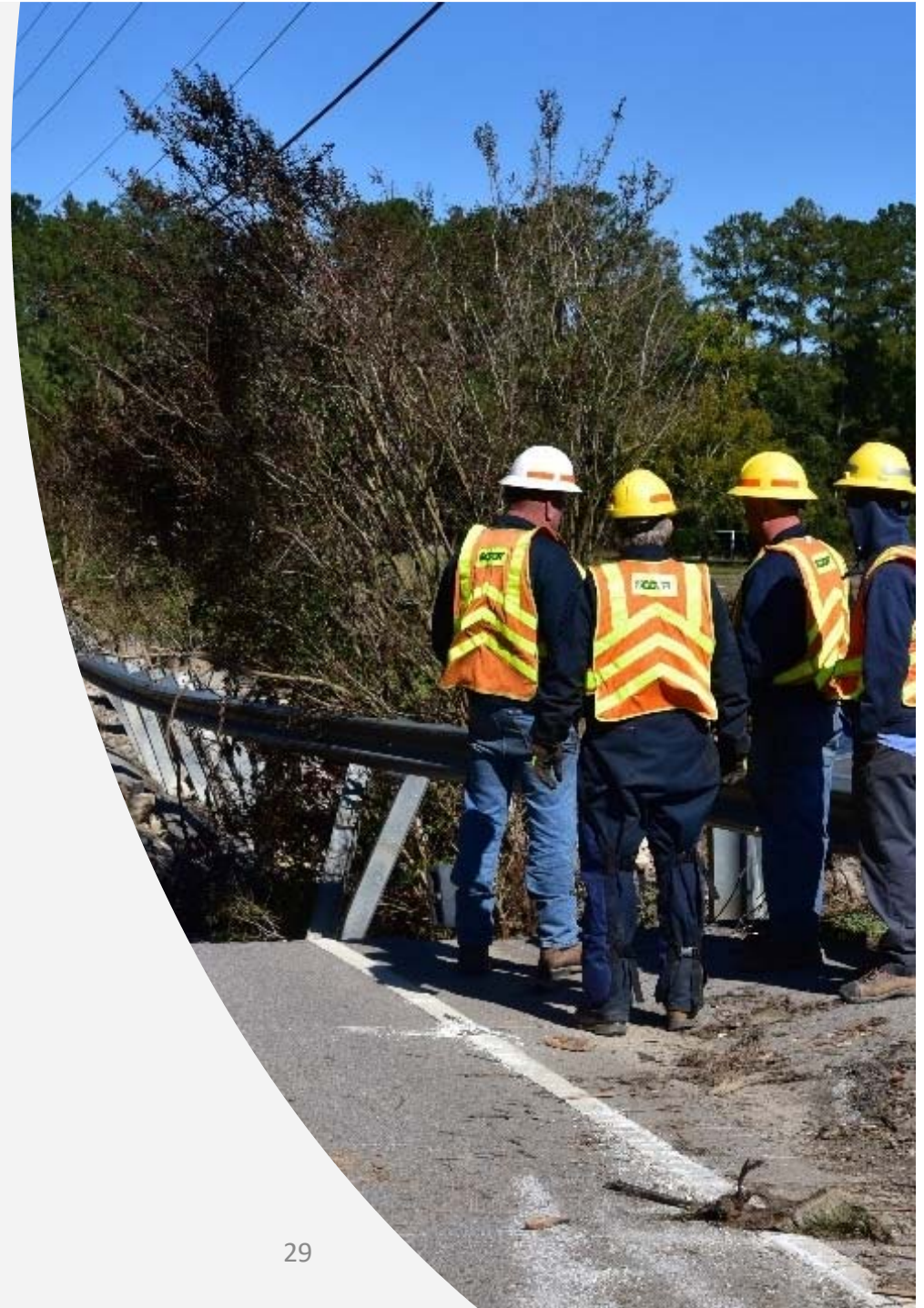
Module 3: Long-term Recovery



North Central Texas
Council of Governments

June 10 +6 Months

- Most damaged infrastructure repaired
- Homeowners who experienced significant damage fall short of paying for necessary repairs
- Some residents have left the area to find work



June 10 +6 Months

- Rental rates skyrocket due to high demand and low supply
- Increase in people experiencing homelessness
- Many small businesses and restaurants have permanently closed
- Frustrated residents criticize local officials on social media for “not doing enough” to support residents



Table Discussions

- Discussion questions on pages 12 through 14 of SitMan are a guide—no need to follow precisely or get through all of them
- Choose a spokesperson who will provide a 5-minute brief-back to the larger group





Closing Discussion



**North Central Texas
Council of Governments**

CLOSING

- Hotwash
- Feedback
- Next Steps
 - After-Action Report/Improvement Plan (AAR/IP)
 - Edits for North Central Texas Recovery Framework
 - Impacts on other existing plans, policies, and procedures (if applicable)

