



National Environmental Performance Track

North Central Texas EMS Workgroup Meeting

Craig Weeks & Israel Anderson

U.S. EPA Region 6

March 2, 2007

Arlington, Texas





Overview

- Performance Track Basics
- Membership Profile
- Environmental Results
- Program Benefits



Performance Track Basics



Program Background

- Voluntary Partnership Program
- Recognizes and rewards top environmental performers that go beyond legal requirements
- Launched in mid-2000
 - now has over 470 Members
- Led out of EPA's Office of Policy in collaboration with EPA Regional Offices and States



Program Entry Criteria

- Environmental Management System
- Demonstration of continuous improvement (past achievements and future performance commitments)
- Community outreach and stakeholder involvement activities
- Sustained record of compliance



EMS Requirements

- Does not have to be ISO 14001 certified
- Must have had an independent assessment of EMS prior to application
- Must have gone through one complete cycle (typically a year)

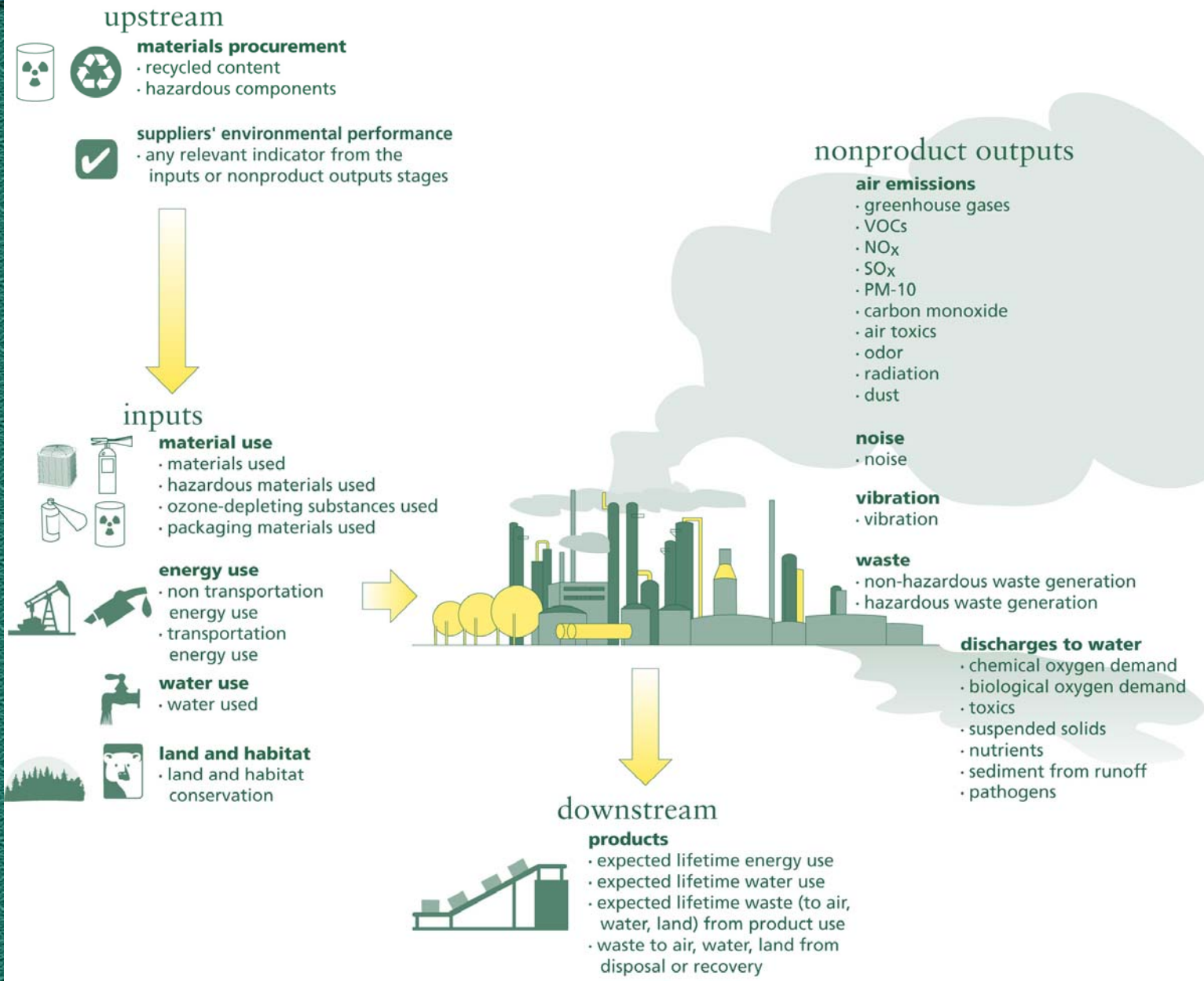


Categories for Performance Commitments

- Material Procurement
- Supplier Environmental Performance
- Material Use
- Water Use
- Energy Use
- Land Use
- Air Emissions
- Water Discharges
- Waste
- Noise
- Vibration
- Products

Figure 1: Performance Track Environmental Performance Indicators

Applicants to the program choose from among these indicators when setting their performance goals.





Community Interaction and Engagement

- Identify and respond to community concerns
- Inform community of matters affecting them
- Make Annual Performance Report available to public



Sustained Record of Compliance

- Facility must have a record of compliance with all applicable environmental requirements at time of application
- We conduct a comprehensive compliance screen that looks at:
 - criminal activities (5 yrs),
 - civil activities (3 yrs), and
 - patterns of non-compliance



Obligations of Membership

- Maintain EMS & compliance
- Conduct community outreach
- Make good faith efforts toward meeting performance commitments
- Submit an Annual Performance Report
- Undergo a site visit



Membership Profile



What Have Facilities Accomplished?

- **P-Track member's have reduced their environmental footprint (2000-2005):**
 - Water use by 3.5 billion gallons
 - Non-Hazardous Waste by 600,000 tons
 - Hazardous Waste by 130,000 tons
 - GHG's by 88,000 tons of CO₂ equivalents
 - NO_x by 6,300 tons
 - SO₂ by 17,000 tons
 - Preserving 14,000 acres of habitat

Program Benefits



Benefits of Participation

- Public recognition
- Networking with other high performers
- Positive relationship with regulators
- Access to information sources
- Low inspection priority
- Regulatory incentives



Public Recognition

- Annual Recognition Event
- Regional Roundtables
- Listed on EPA Website
- EPA Press Releases and Articles
- Use of P-Track Program Logo

Program Benefits



Simpson®

Gregory Narum
Environmental Manager

Simpson Tacoma Kraft Company, LLC
P.O. BOX 2193 801 PORTLAND AVE
TACOMA, WASHINGTON 98401-2193
(253) 596-0034 FAX (253) 596-0142
gna.um@simpson.com





Low Priority for Routine Inspections

- No Inspection by EPA Unless –
 - There is Reason to Believe a Compliance Problem Exists
- EPA Inspectors Must Get Prior Approval
- Some States Have Adopted Policy



Networking

- Meetings with EPA Officials
- Performance Track Participants Association
 - Website: www.ptpaonline.org
- Tele-Seminars
- Best Practices Database



Regulatory Changes

- EPA is changing its regulations to provide different treatment for P-Track facilities
- Regulatory changes apply only to members of the P-Track program
- Changes are based on maintaining environmental protection and increasing flexibility and decreasing administrative costs



Performance Track Incentives Rule

- Rule signed April 14, 2004. Effective on date of publication in *Federal Register*, April 22, 2004.
- **RCRA Extended Hazardous Waste Accumulation Time** — Large quantity generators of hazardous waste allowed 180 days to accumulate their hazardous waste without a RCRA permit or interim status (270 days some cases).
- **Reduced Reporting Frequency for Air Sources** — Reduces frequency of reports under MACT provisions of Clean Air Act - semi-annual reports may be submitted annually.

State Incentives

- Working with States to develop State-specific incentives through MOAs or other means. Examples include:
 - State implementation of ‘Low Priority for Routine Inspections’
 - Streamlined membership between State performance program and P-Track
 - Implementation of Federal Regulations at State level
 - Reductions in certain permit fees for State and P-Track program members
 - Expedited Permitting



Working with States and Tribes

12 States With MOAs

- Colorado
- Georgia
- Maine
- Massachusetts
- Mississippi
- Missouri
- Tennessee
- Texas
- Utah
- Virginia
- Washington
- Wisconsin



State Programs

Texas	Clean Texas
New Mexico	Green Zia
Louisiana	Environmental Leadership Program (ELP)
Oklahoma	Environmental Performance & Recognition Program
Arkansas	None currently

Performance Track Network Partners

- American Chemistry Council
- American Furniture Manufacturers Association
- American Textile Manufacturers Institute
- Associated General Contractors of America
- The Auditing Roundtable
- Cement Kiln Recycling Coalition
- Global Environment & Technology Foundation Public Entity EMS Resource Center
- Greening of Industry Network
- National Association of Chemical Distributors
- National Paint and Coatings Association
- National Pollution Prevention Roundtable
- National Ready Mixed Concrete Association
- National Stone, Sand and Gravel Association
- NORA, an Association of Responsible Recyclers
- North American Die Casting Association
- Screenprinting and Graphic Imaging Association International
- Steel Manufacturing Association
- Synthetic Organic Chemical Manufacturers Association
- Voluntary Protection Programs Participants' Association
- Wildlife Habitat Council



Applying is Easy!

- EPA accepts applications twice per year
- Application Periods: April - May and September – October
- Joint Clean Texas Application
- Apply online at:
www.epa.gov/performancectrack



EMS for Cities and other Public Entities

- June 26-28, 2007 in Dallas, Texas
- Jointly sponsored by EPA, TCEQ, NCTCOG, and City of Dallas
- Include mayors, city managers, county commissioners, environmental directors and managers, public works directors, and other environmental staff of 16 counties
- EMS veterans will share their experiences with EMS implementation



For More Information

Performance Track Web site:
www.epa.gov/performance-track

Craig Weeks
(214) 665-7505
weeks.craig@epa.gov

Israel Anderson
(214) 665-3138
anderson.israel@epa.gov