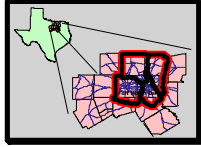


SEE SAFE CLEAN and GREEN

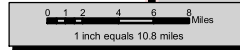
Regional Environmental Corridors - MPA Trinity



The Metropolitan Planning Area - Trinity (MPA) comprises portions of the four central Trinity River watersheds; the Elm Fork, East Fork, West Fork and Mainstem.

Legend

- Freeways
- Regional Environmental Corridors
- Urban Area Counties
- Major Watershed Boundaries
- MPA - Trinity
- Lakes in Corridors
- Other Area Lakes



Regional Environmental Corridors are those corridors that meet any one of the following criteria:

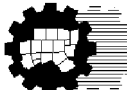
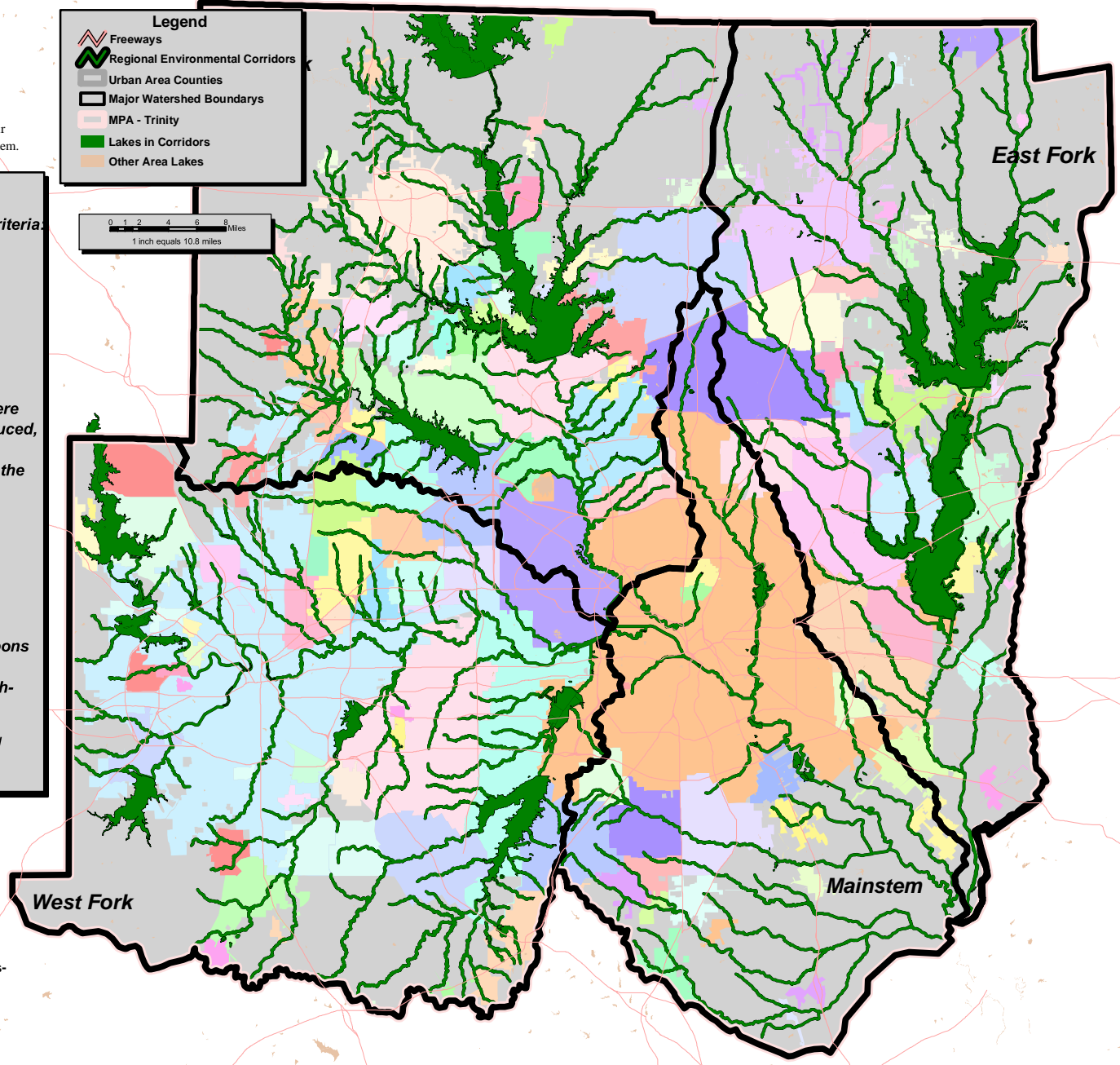
- Multi-jurisdictional
- State designated stream segments (including reservoirs)
- Ecologically significant stream segments

SAFE regional environmental corridors occur where loss of life and property damage from flooding are reduced, the natural function of the floodplain to safely convey storm water is preserved, and the financial integrity of the

CLEAN regional environmental corridors support water quality that meets or exceeds the State's standards for public health and enjoyment, aquatic and wildlife protection; wastewater disposal needs, and sustains aesthetical

GREEN regional environmental corridors are ribbons of greenways that tie together ecological areas, open spaces, recreational and mobility opportunities throughout the region.

The goal by 2025 is to have all regional environmental corridors safe clean and green.



North Central Texas
Council of Governments
Environmental Resources

This map/data was created by the North Central Texas Council of Governments (NCTCOG) for use as-is and as an aid in graphic representation only. The data is not verified by a Registered Professional Land Surveyor for the State of Texas and is not intended to be used as such. NCTCOG, its officials, and its employees do not accept liability for any discrepancies, errors, or variances that may exist.