

Consider a SmartWay® Vehicle

Find Environmentally Friendly Vehicles the SmartWay

WHY BUY A SMARTWAY VEHICLE?

By buying SmartWay certified vehicles, drivers can:

- Save money on fuel costs (details on reverse side)
- Reduce dependence on foreign oil
- Protect the environment

WHAT IS A SMARTWAY CERTIFIED VEHICLE?

SmartWay certification is based on how a vehicle scores using EPA air pollution standards and criteria. Scores are based on emission levels (Air Pollution Score) and fuel economy values (Greenhouse Gas Score). Vehicles that score a 6 out of 10 or better, on both the Air Pollution and Greenhouse Gas Scores, and achieve a total score of at least 13, qualify as a SmartWay Certified Vehicle.

SmartWay **Elite** certification is reserved for vehicles that, depending on model year, attain a total score of 17 or higher. These vehicles are considered to be the cleanest, most fuel-efficient vehicles on the market.

Many SmartWay certified vehicles are eligible for up to \$3500 in AirCheckTexas Drive A Clean Machine vehicle replacement assistance.

For more information visit: www.epa.gov/smartway

When you shop for your next car, Think Green. Buy Green. Save Green.

FIND A SMARTWAY CERTIFIED VEHICLE at www.epa.gov/greenvehicles.

Search for SmartWay Vehicles

Find the cleanest, most fuel efficient vehicle that meets your needs.

Search by model year and vehicle type (small car, SUV, etc).



Use the EPA Green Vehicle Guide to research and compare vehicles by their Air Pollution and Greenhouse Gas Scores, and to calculate your fuel savings.

Find a Vehicle

Search SmartWay Vehicles

Want the cleanest, most efficient vehicle? Look for a SmartWay Certified Car or Truck!



Model Year

2015
2014
2013

State

All States

Vehicle Class

Small Cars
Family Sedans
Upscale Sedans

Use control+click to pick multiple selections.



Contact Us



North Central Texas
Council of Governments

Rachel Linnewiel, Air Quality Planner
817.608.2329 | rlinnewiel@nctcog.org

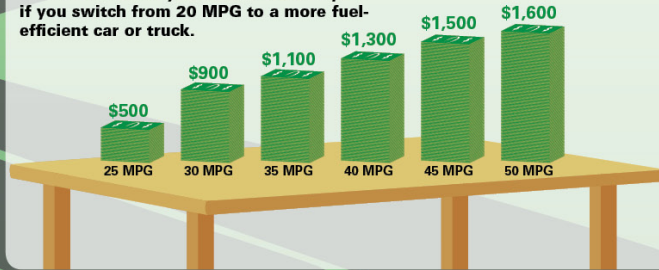


Buy green. Save green.

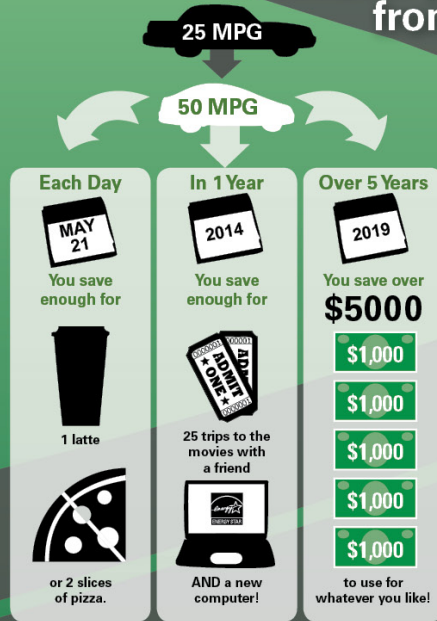
Source: www.epa.gov

Are you leaving MONEY on the table?

Here's how much you could save in 1 year if you switch from 20 MPG to a more fuel-efficient car or truck.

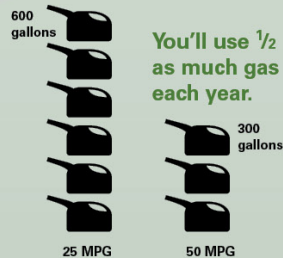


What if you switched from 25 MPG to 50 MPG?



You'll also reduce your gasoline use.

Switching from a 25 to 50 MPG car:



Over 5 years, you'll save



Assumptions—Gasoline: \$3.50/gal; Annual miles: 15,000; Gasoline tank: 15 gallons; Movie ticket: \$9.00; Latte: \$2.75; Pizza slice: \$1.40; Laptop \$500. Monetary values shown in top graph are rounded to the nearest \$100.