

# **Bicycle and Pedestrian Advisory Committee (BPAC) Restructuring**

**June 17, 2009**



**North Central Texas Council of Governments  
Transportation Department**

# Restructuring Summary

## Previous

**Name:** Bicycle and Pedestrian  
Transportation Task Force

**Chair:** PM Summer

**Vice Chair:** None

**Term Length:** Unspecified

## Revised

**Name:** Bicycle and Pedestrian  
Advisory Committee

**Chair:** Don Koski – 2009 Term

**Vice Chair:** Renée Burke Jordan – 2009 Term

**Term Length:** One Year



# Restructuring Summary

## Previous

**Membership:** 31 Members\*

**Method for Designating Members:** None

4 Transportation Providers

13 Interested Parties

8 STTC Cities Represented

*\* Multiple representatives for some organizations*



## Revised

**Membership:** Potential for 49 Members

**Method for Designating Members:** Verification from Surface Transportation Technical Committee (STTC)

6 Transportation Providers (2 New)

34 STTC Cities Represented (26 New)

9 STTC Counties Represented (All New)

» Interested Parties invited to attend/participate and provide feedback

# Restructuring Summary

## Previous

### **Meeting Frequency:**

2005 – 2007 (2 annually)

2004 – 1

2000 – 2003 (7 annually)

1999 – 4



## Revised

**Meeting Frequency:** Quarterly, third Wednesday of the Month

### **Next Meetings:**

Wednesday, August 19, 2009, 2:00 p.m. – 3:30 p.m.

Wednesday, October 21, 2009, 2:00 p.m. – 3:30 p.m.

# Restructuring Summary

## Previous

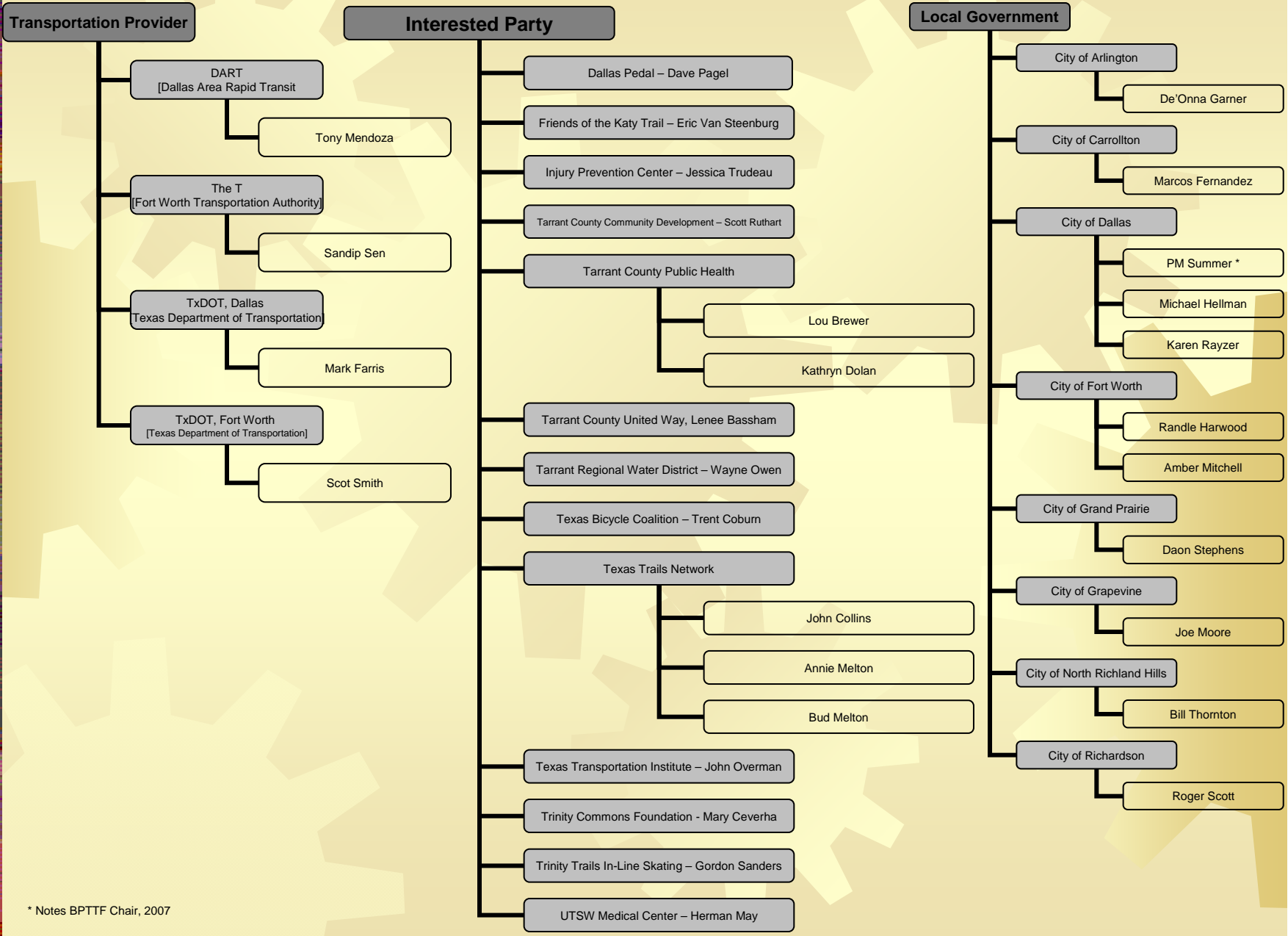
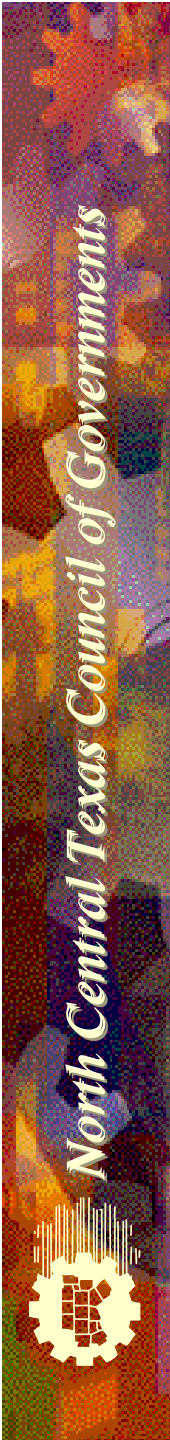
**Task Force Function:** Provide technical support in the areas of regional bicycle and pedestrian planning, review, and selection of bicycle and pedestrian projects funded by the Regional Transportation Council (RTC).

## Current

**Committee Function:** Provide technical expertise, public outreach support, review of regional bicycle and pedestrian planning, training, assistance in the selection of bicycle and pedestrian projects funded by the RTC, as needed.

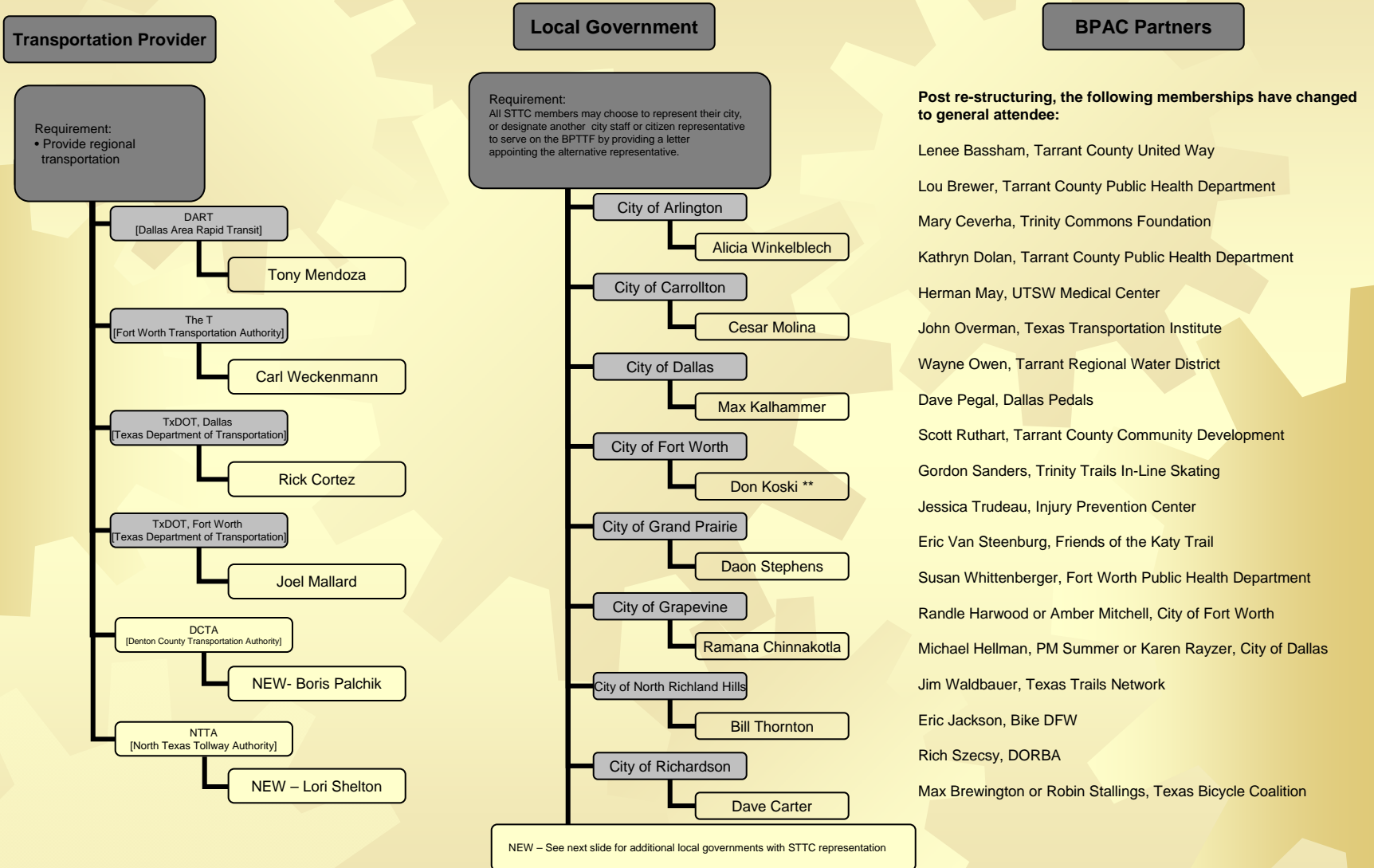
**Committee Recommendations:** Recommendations by the BPAC membership, with the endorsement of the Chair will be subject to approval by RTC.

# Bicycle and Pedestrian Transportation Task Force (BPTTF) Membership - Previous



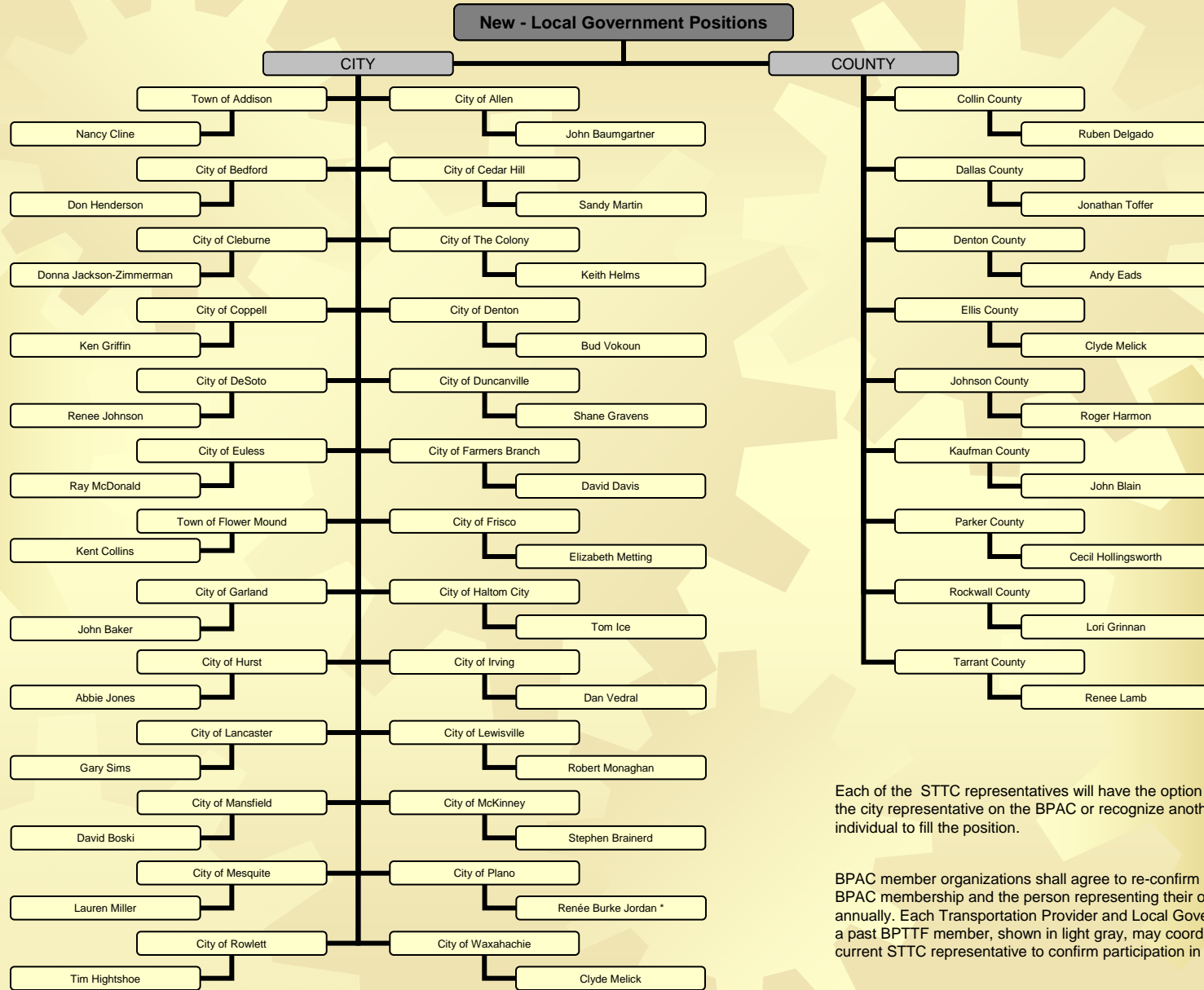
\* Notes BPTTF Chair, 2007

# 2009 Bicycle and Pedestrian Advisory Committee (BPAC) Membership - Restructured



\*\* Denotes BPAC Chair, 2009

# 2009 Bicycle and Pedestrian Advisory Committee (BPAC) Membership - Restructured



Each of the STTC representatives will have the option to serve as the city representative on the BPAC or recognize another individual to fill the position.

BPAC member organizations shall agree to re-confirm interest in BPAC membership and the person representing their organization annually. Each Transportation Provider and Local Government with a past BPTTF member, shown in light gray, may coordinate with the current STTC representative to confirm participation in BPAC.

\* Denotes BPAC Vice Chair, 2009



# Contact Information

**Karla Weaver, AICP**  
**Principal Transportation Planner**  
**kweaver@nctcog.org**  
**(817) 608-2376**

or

**Deb Humphreys**  
**Transportation Planner**  
**dhumphreys@nctcog.org**  
**(817) 608-2394**

**BPAC Website**

**[www.nctcog.org/trans/committees/bpac/index.asp](http://www.nctcog.org/trans/committees/bpac/index.asp)**