

Innovative Resource Agency Partnerships

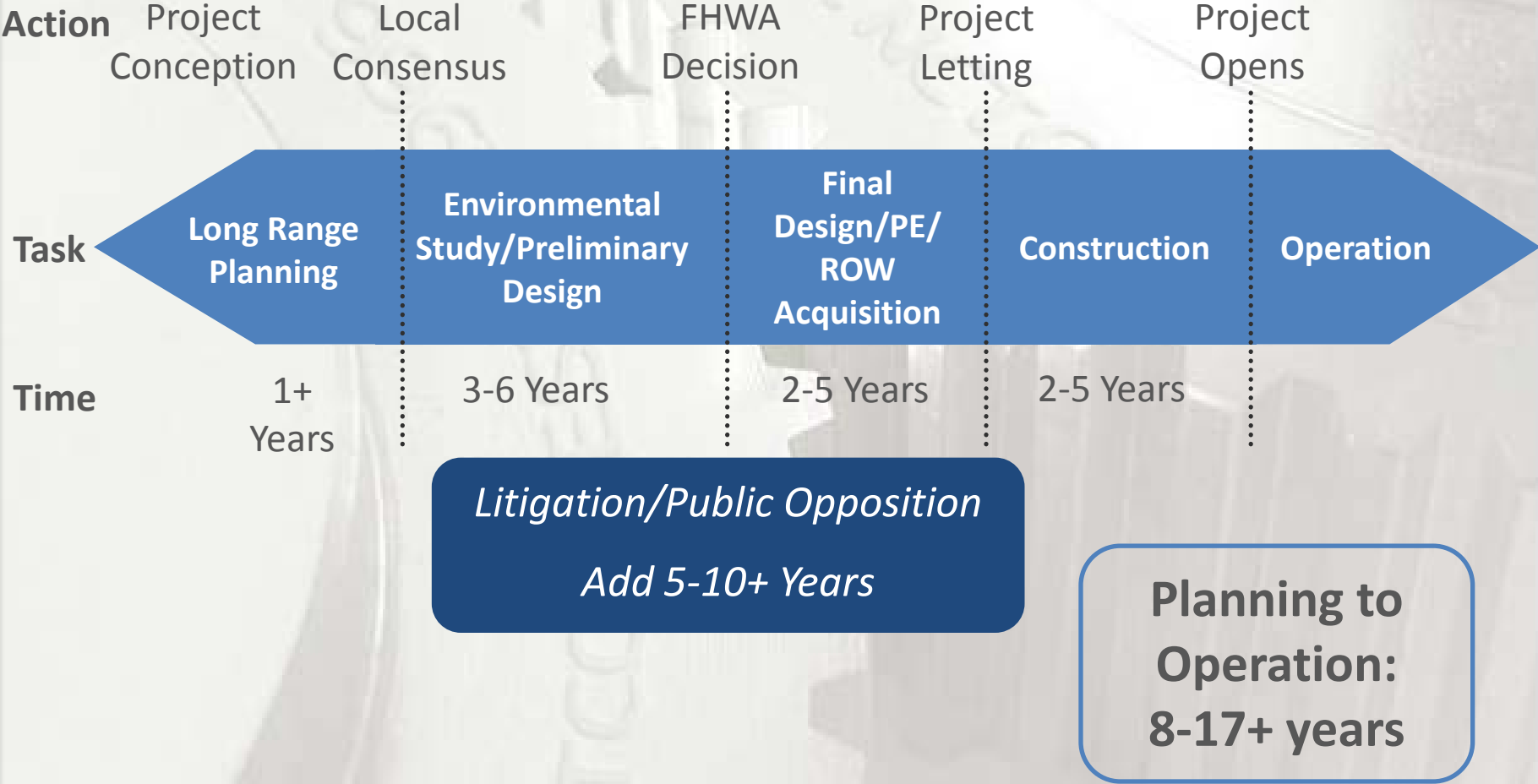
NCTCOG Public Meetings
September 13 & 15, 2011

Improved Outcomes Through Innovative Partnerships

- Good planning considers impacts to:
 - Community
 - Environment
 - Economy
- NCTCOG is utilizing partnerships with environmental regulatory/resource agencies to expedite projects
 - USACE Program
 - Regional Ecosystem Framework Development
- Partnership between local governments, US Navy, and NCTCOG to support compatible land use around NAS Fort Worth, JRB

Project Development Timeline

Typical Roadway Project Development Process



FHWA: Federal Highway Administration

PE: Engineering

ROW: Right-of-Way

Expediting Transportation Project Environmental Review Process

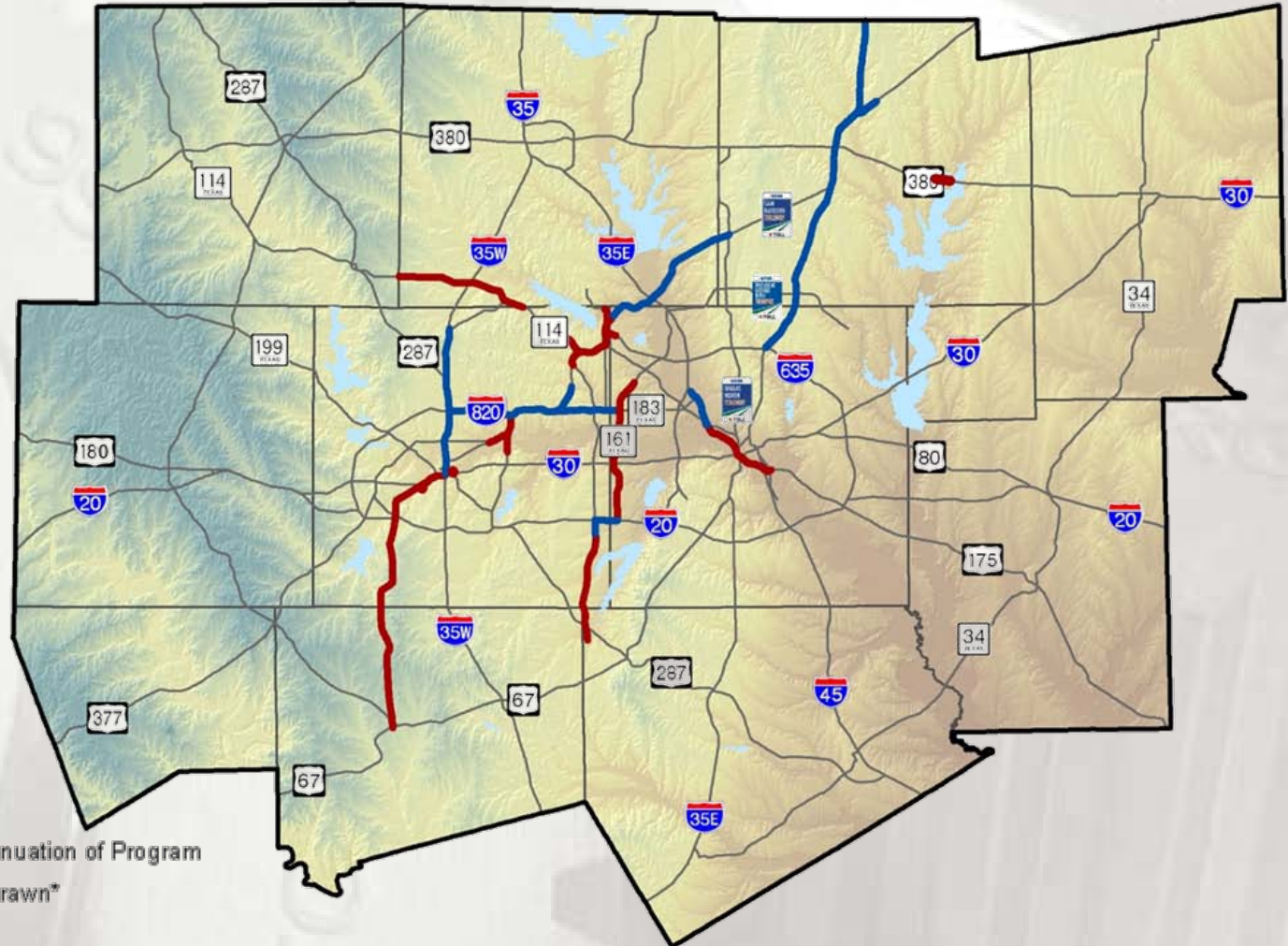
Transportation Legislation SAFETEA-LU supported streamlining the environmental review process for transportation projects in several ways:

- Federal Highway Administration found funding dedicated positions at resource agencies like USACE, US EPA, USFWS, etc. was an effective way to streamline the project development process.
- Increasing the level of coordination between transportation and resource agencies early in the planning process through data sharing and integrated planning.

US Army Corps of Engineers Agreement

- In October 2008, NCTCOG entered into an agreement with the USACE to fund a full time position to expedite federally required permits for regionally significant transportation projects.
- NCTCOG is extending this agreement for an additional 5 years due to the program's success.
- Program has resulted in:
 - Reduction of impact to aquatic environment
 - Reduction in mitigation requirements
 - Reduction of time for permit decisions
 - Elimination of unnecessary permits

Regional Transportation Projects Benefitting from USACE Program



Legend

Projects on MOA

— Permits Pending Continuation of Program

— Permit Action or Withdrawn*

— Highways

▭ MPA Boundary

* A single corridor may require multiple permit actions.

Regional Ecosystem Framework (REF) Development

- Work supported by Federal Highway Administration Eco-Logical Grant
- Resulted in an inventory of environmental data that provides a framework for assessing potential impacts of infrastructure projects
- Assigns a value to each subwatershed for key environmental resources

Vital Ecosystem Information Layers*

GREEN INFRASTRUCTURE

- Wildlife habitat
- Natural areas
- Agricultural land

WATER QUALITY AND FLOODING

- Impaired water segments
- Flood zones
- Surface water quantity
- Wetlands

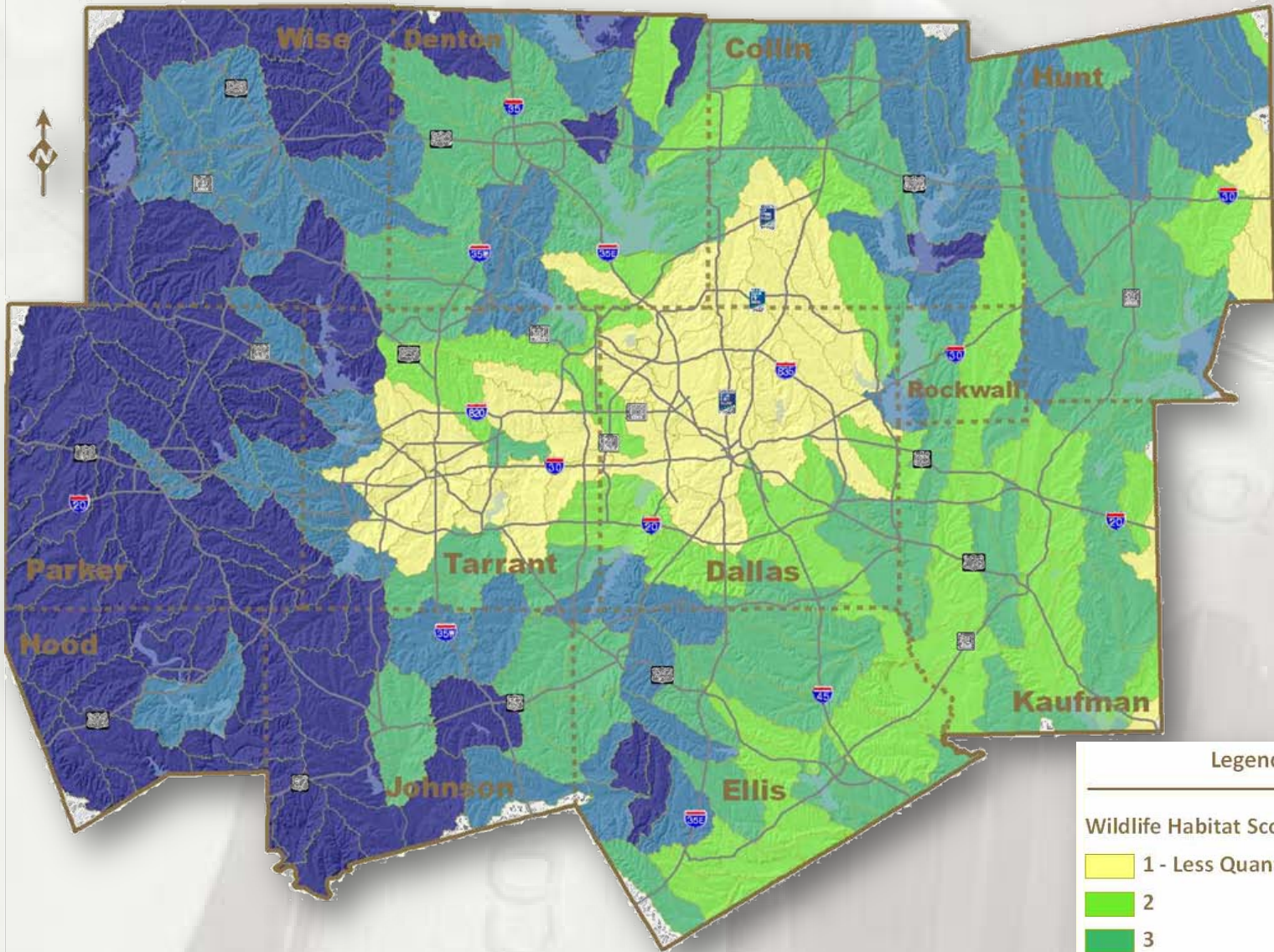
ECOSYSTEM VALUE**

- Rarity
- Diversity
- Sustainability

*Data Source: EPA Region 6, Texas GRID data

**Regional Ecosystem Assessment Protocol is based on Ecoregion Analysis

Example: REF Wildlife Habitat Score



Legend

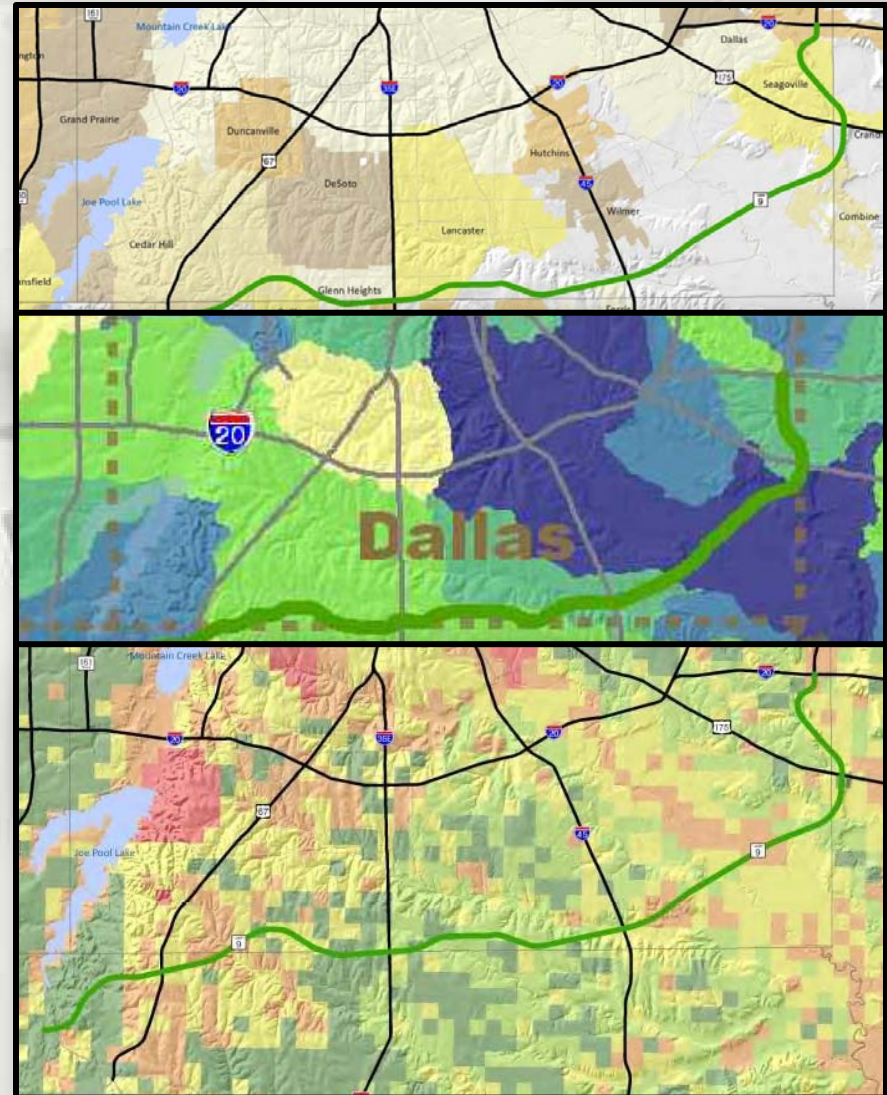
Wildlife Habitat Score

- 1 - Less Quantity of Habitat
- 2
- 3
- 4
- 5 - High Quantity of Habitat

The Regional Ecosystem Framework Wildlife Habitat Score represents a subwatersheds quantity of NLCD habitats represented by forest lands, shrublands, grasslands, wetlands, and open water. Data sources include the Texas GRID data. This information has been converted to the Subwatershed for the Dallas-Fort Worth Metropolitan Planning Area for use in long-range planning. For more information on the calculations for this layer, please visit www.nctcog.org/traces.

Benefits of Transportation and Conservation Planning Agency Coordination

- Regional screening tool that identifies relative importance of an environmental priority by subwatershed
- Assists transportation planners in identifying potential impacts and to avoid priority areas early on
- Potential to identify more valuable mitigation opportunities
- Potential to expedite transportation projects



Regional Aviation Assets

Six of the nine major aerospace industries have operations in Texas

General Aviation Activity in Texas Creates...

61,900 Jobs

\$2.5 Billion Payroll

\$8.7 Billion Economic Output

More than 20,000 combined employees

Protecting These Assets:

Encroachment is a threat to the viability of aviation facilities.

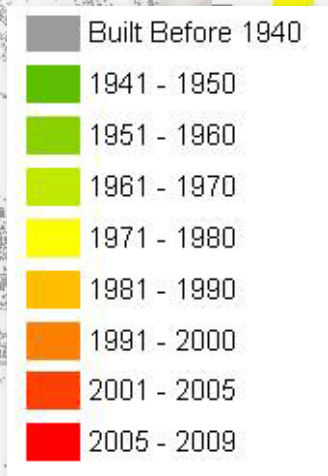
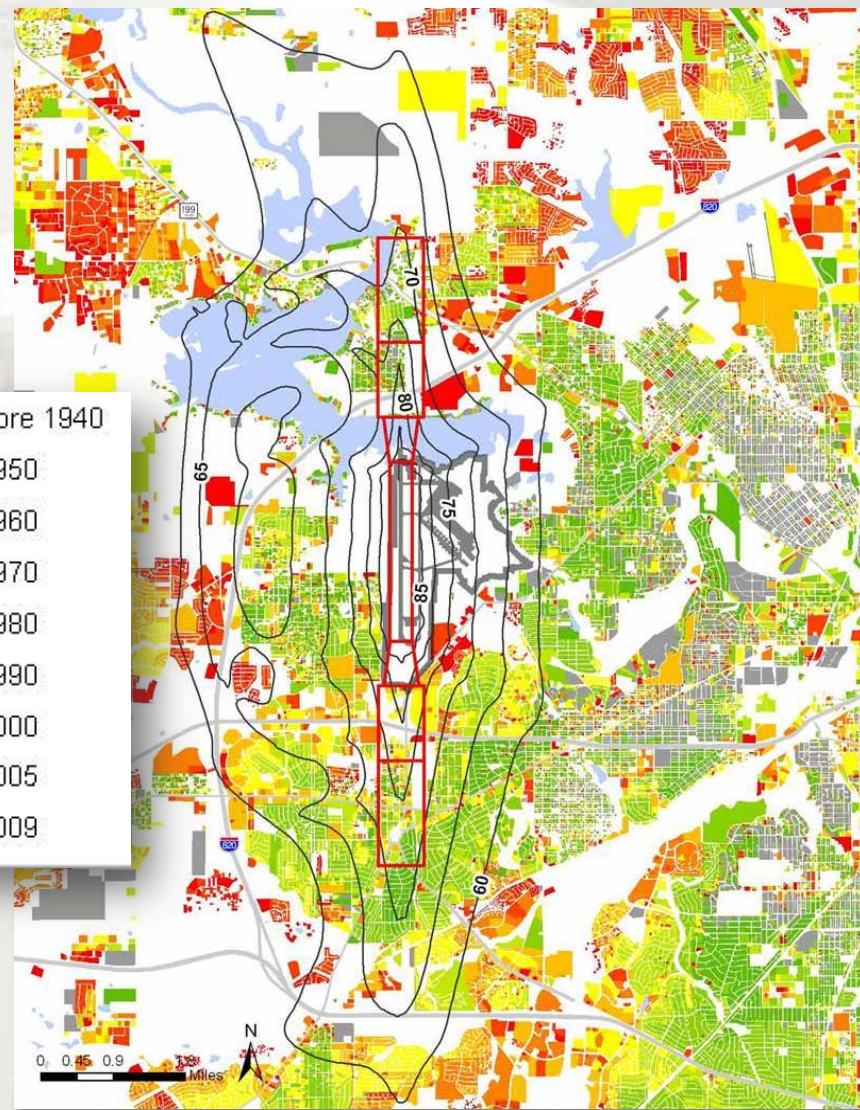
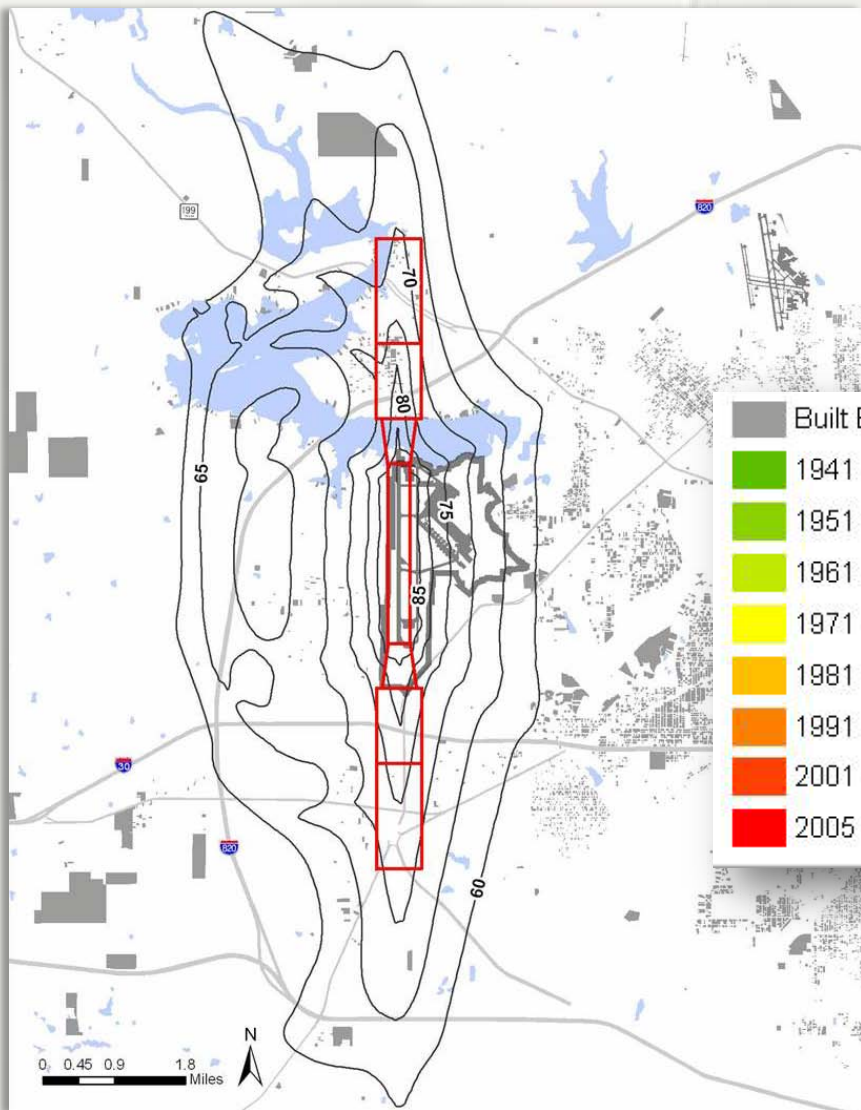
Contributing factors include:

- Rapid population growth
- Urban encroachment
- Lack of land-use controls
- Obstructions (gas wells, wind turbines, cell phone towers, etc.)

Development Around NAS Fort Worth, JRB

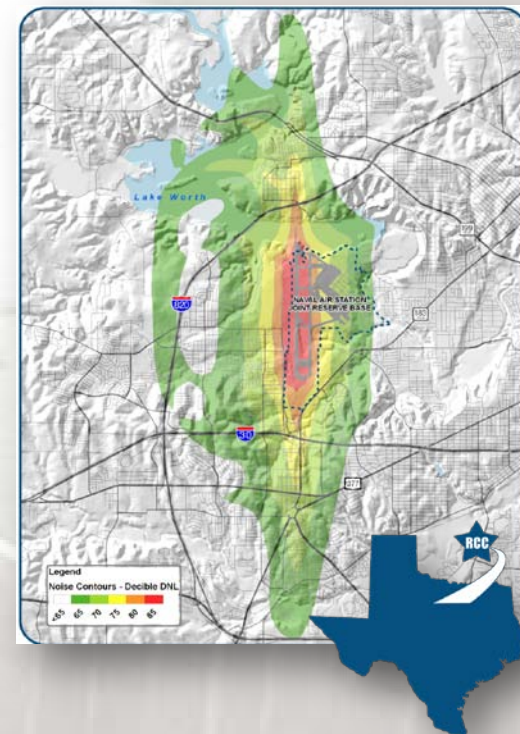
1940

2009



Supporting Compatible Land Uses Around NAS Fort Worth, JRB

- 2006 – 2008: Joint Land Use Study (JLUS) completed with leadership from seven local governments
 - Emphasis on compatible land use in noise contours and safety zones to protect public health and support long-term mission of base
- 2008: Formed Regional Coordination Committee (RCC)
 - Voting members include seven cities and Tarrant County
 - Oversee implementation of JLUS recommendations
 - Long-term role related to communication, coordination, and encouragement of compatible development near NAS Fort Worth, JRB



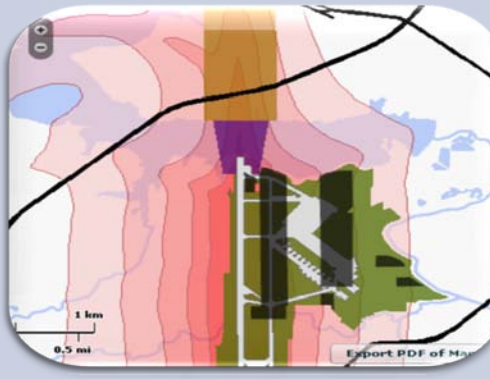
Regional Coordination Committee

Current Efforts



Transportation

- Surface transportation study
- Coordination with local partners
- Identifying strategies for improvement



Planning Updates

- Housing & retail siting study
- Building code updates
- Comprehensive plan updates
- Development review website



Compatible Development

- City of Fort Worth Lake Worth Vision Plan
- Fort Worth rezoning parcels in north and south APZs
- Benbrook alternative energy ordinance

Planning for Livable Military Communities

NCTCOG applied for and was awarded a HUD Community Challenge Grant on behalf of partner communities

Project Goal:

To initiate local government planning updates that support sustainable development strategies while considering land uses and development options that are compatible with military operations.

Major Work Activities:

- ***Work Activity 1:*** Housing and Retail Feasibility and Siting Study
- ***Work Activity 2:*** Sustainable Transportation Options
- ***Work Activity 3:*** Ordinance Compatibility with Air Installation Compatible Use Zones (AICUZ) and Energy Efficiency
- ***Work Activity 4:*** Comprehensive Plan Updates

Questions and Contact

Tamara Cook

Principal Transportation Planner

North Central Texas Council of Governments

(817) 608-2395

tcook@nctcog.org

www.nctcog.org/traces

www.nctcog.org/rcc

www.nctcog.org/livablecommunities