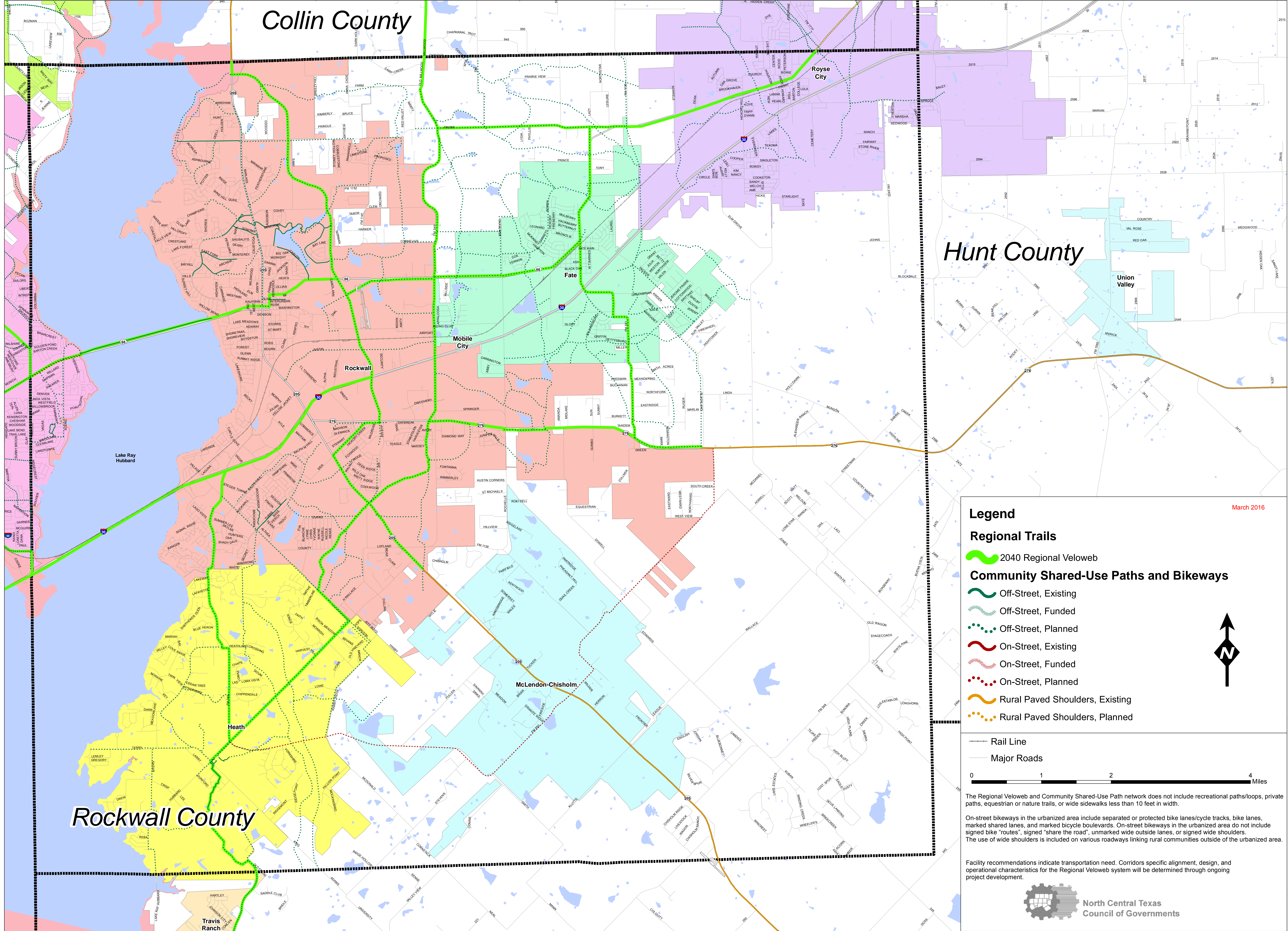


Bikeway Network in Rockwall County



March 2016

Legend

Regional Trails

- 2040 Regional Veloweb

Community Shared-Use Paths and Bikeways

- Off-Street, Existing
- Off-Street, Funded
- Off-Street, Planned
- On-Street, Existing
- On-Street, Funded
- On-Street, Planned
- Rural Paved Shoulders, Existing
- Rural Paved Shoulders, Planned

— Rail Line
— Major Roads

0 1 2 4 Miles

The Regional Veloweb and Community Shared-Use Path network does not include recreational paths/loops, private paths, equestrian or nature trails, or wide sidewalks less than 10 feet in width.

On-street bikeways in the urbanized area include separated or protected bike lanes/cycle tracks, bike lanes, marked shared lanes, and marked bicycle boulevards. On-street bikeways in the urbanized area do not include signed bike "routes", signed "share the road", unmarked wide outside lanes, or signed wide shoulders. The use of wide shoulders is included on various roadways linking rural communities outside of the urbanized area.

Facility recommendations indicate transportation need. Corridors specific alignment, design, and operational characteristics for the Regional Veloweb system will be determined through ongoing project development.

North Central Texas Council of Governments