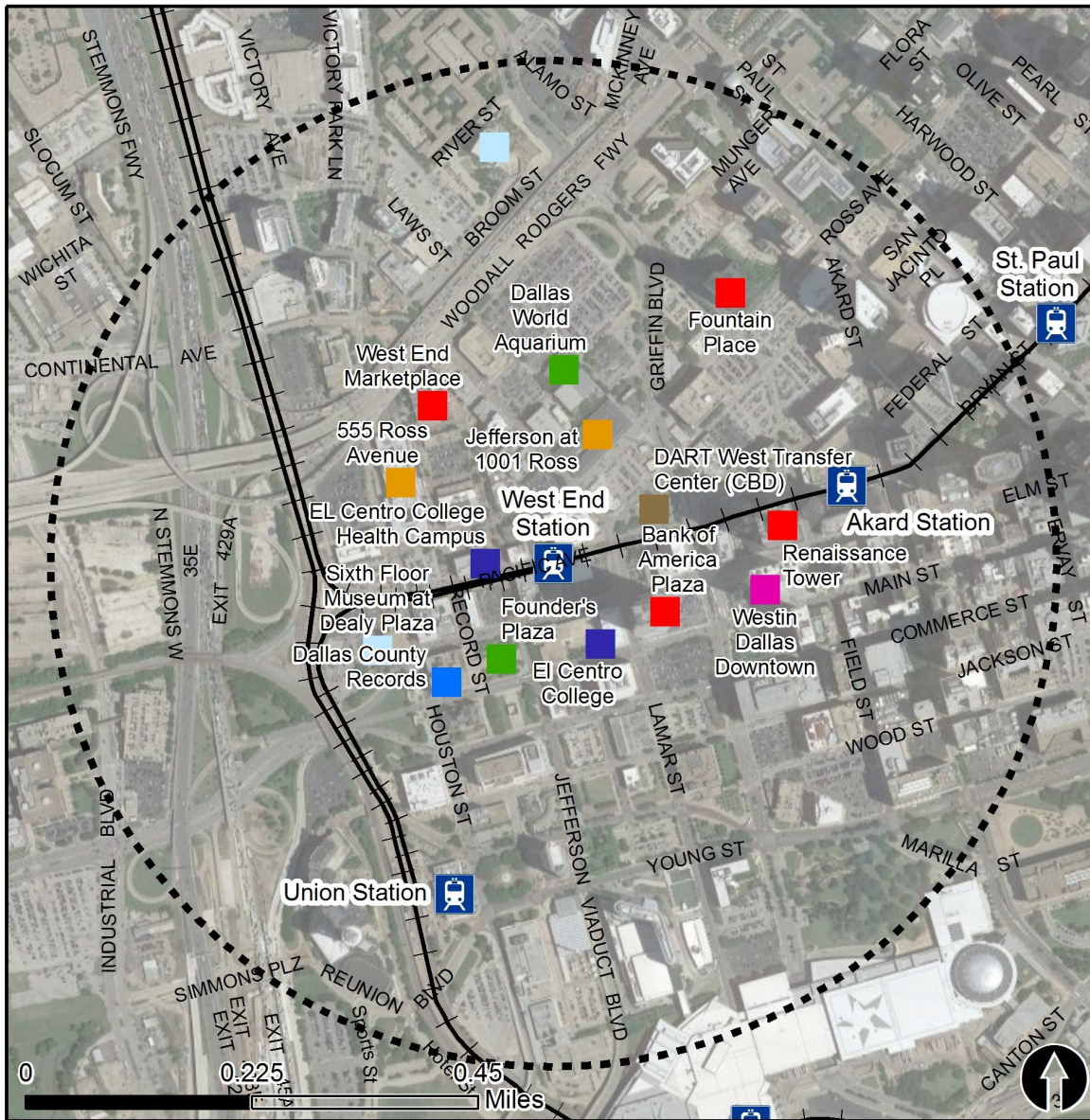


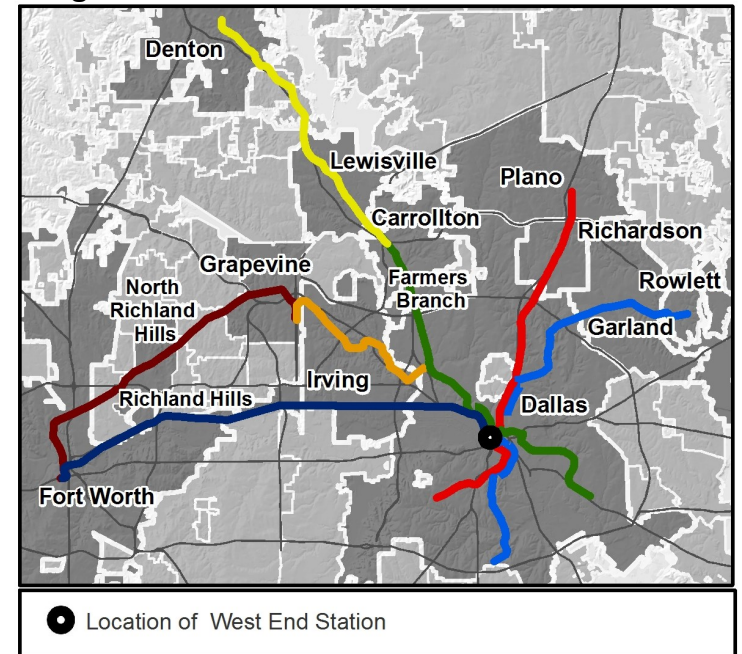
# Rail Station Fact Sheet – West End Station



## Station Overview

West End Station is located on Pacific Avenue between Market and Lamar Streets in downtown Dallas. The station opened in 1996 and is served by the DART Rail Green, Blue, Red and Orange Lines.

## Regional Rail Transit Lines



0.5 Mile  
Station Buffer



Rail Stations



Rail Lines

### Key Developments

Cultural

Government

Hotel

Office

Education

Transportation

Multi-Family

Recreation

# Rail Station Fact Sheet – West End Station



## Station Characteristics<sup>1</sup>

Address	
City	Dallas
Agency	Dallas Area Rapid Transit
Rail Line(s)	Red Line, Blue Line, Green Line, Orange Line
Corridor	Central Business District
Year Opened	1996
Park & Ride Spaces	0

## Ridership<sup>1</sup>

2015 Avg. Weekday	13,275
2015 Avg. Saturday	7,241
2015 Avg. Sunday	5,012

## 2014 On-Board Transit Survey: Access Mode to Station<sup>2</sup>

Bike	0.4%
Drive Alone	0.6%
Carpool	0.5%
Walk	49.3%
Drop Off	5.8%
Other	0.1%
Transit Transfer	43.4%

## Station Area Plans and Studies

Title	Downtown Dallas 360
Publisher	City of Dallas
Year	2011
Web Location	<a href="http://www.downtowndallas360.com/">http://www.downtowndallas360.com/</a>

## Station Area Characteristics (1/2 mile radius)

### Demographics<sup>3</sup>

Total Population	19,071
Population Density (pop/sq. mile)	3,420
Average Median Age	34
Average Median Income	\$80,336.25

### Housing<sup>3</sup>

Total Housing Units	8,095
Housing Density (units/sq. mile)	1,452
Percent Occupied	84%
Percent Owner-Occupied	6%
Percent Renter-Occupied	94%

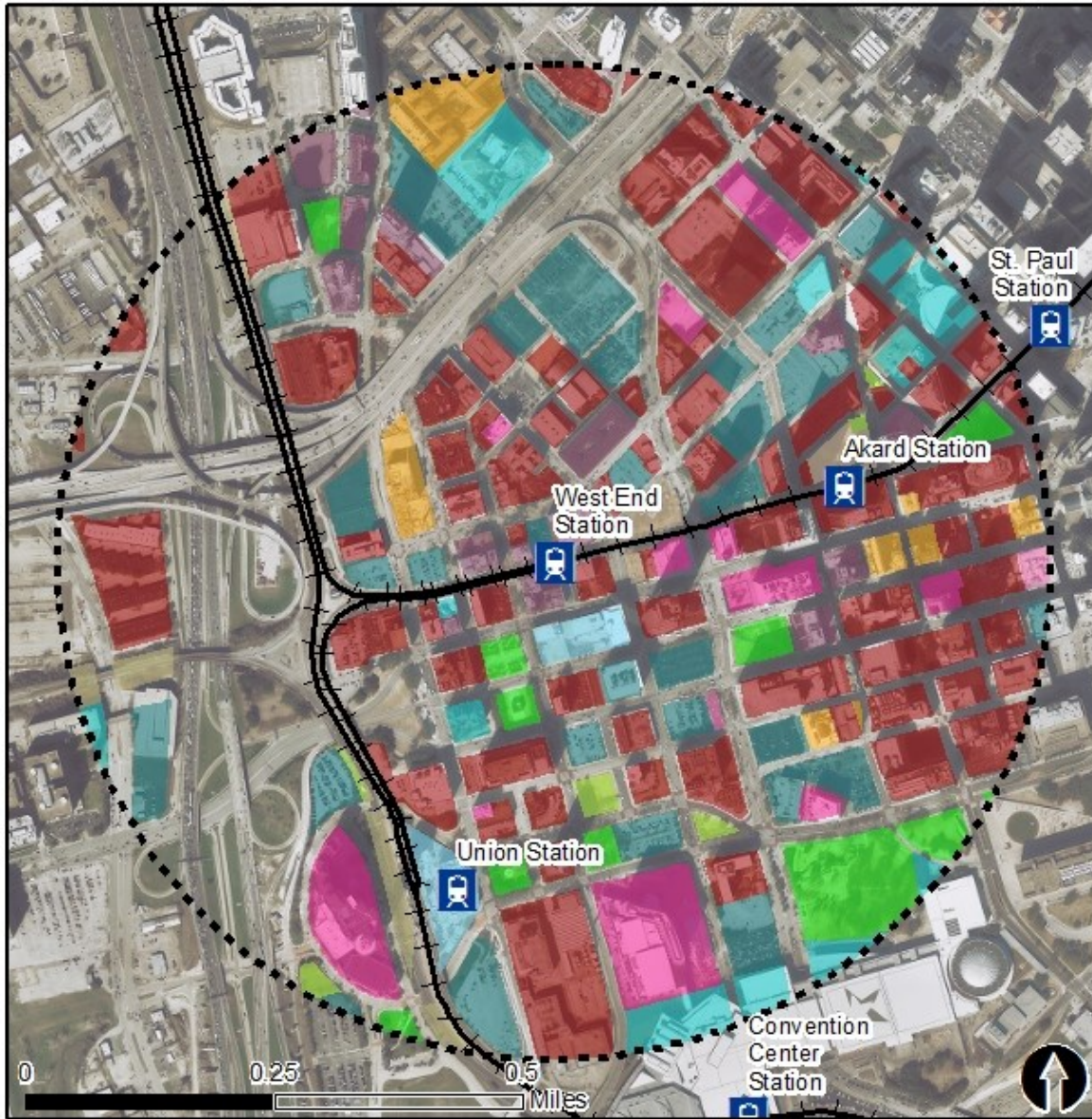
### Commute To Work<sup>3</sup>

Percent Automobile	73.3%
Percent Drive Alone	69.1%
Percent Carpool	4.2%
Percent Transit	6.7%
Percent Bike	0.4%
Percent Walk	12.2%
Percent Other	1.0%
Percent Work from Home	6.5%
Percent Zero-Vehicle Households	4.9%

### Traffic Survey Zone 2017 Employment Forecast<sup>2</sup>

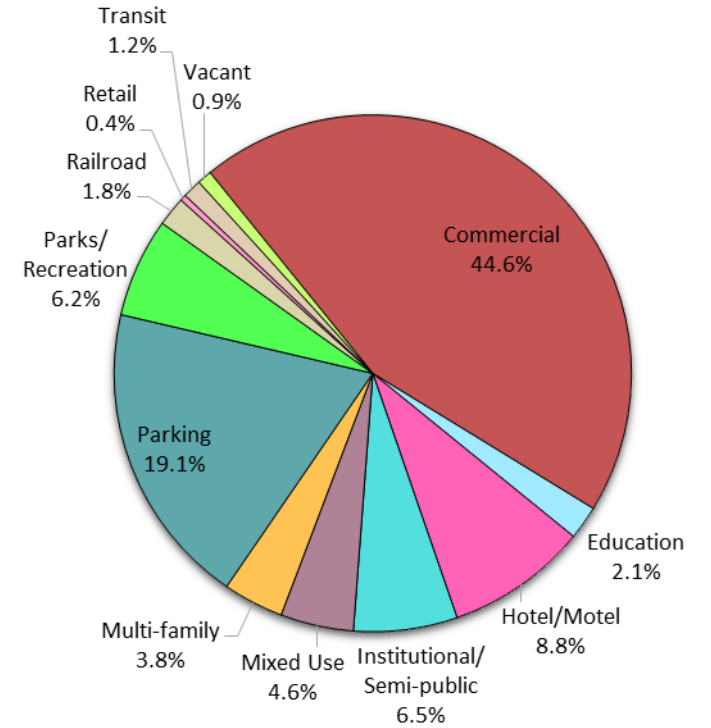
Total Jobs	155,758
Job Density (jobs/sq. mile)	66,883

# Land Use (2016) – West End Station

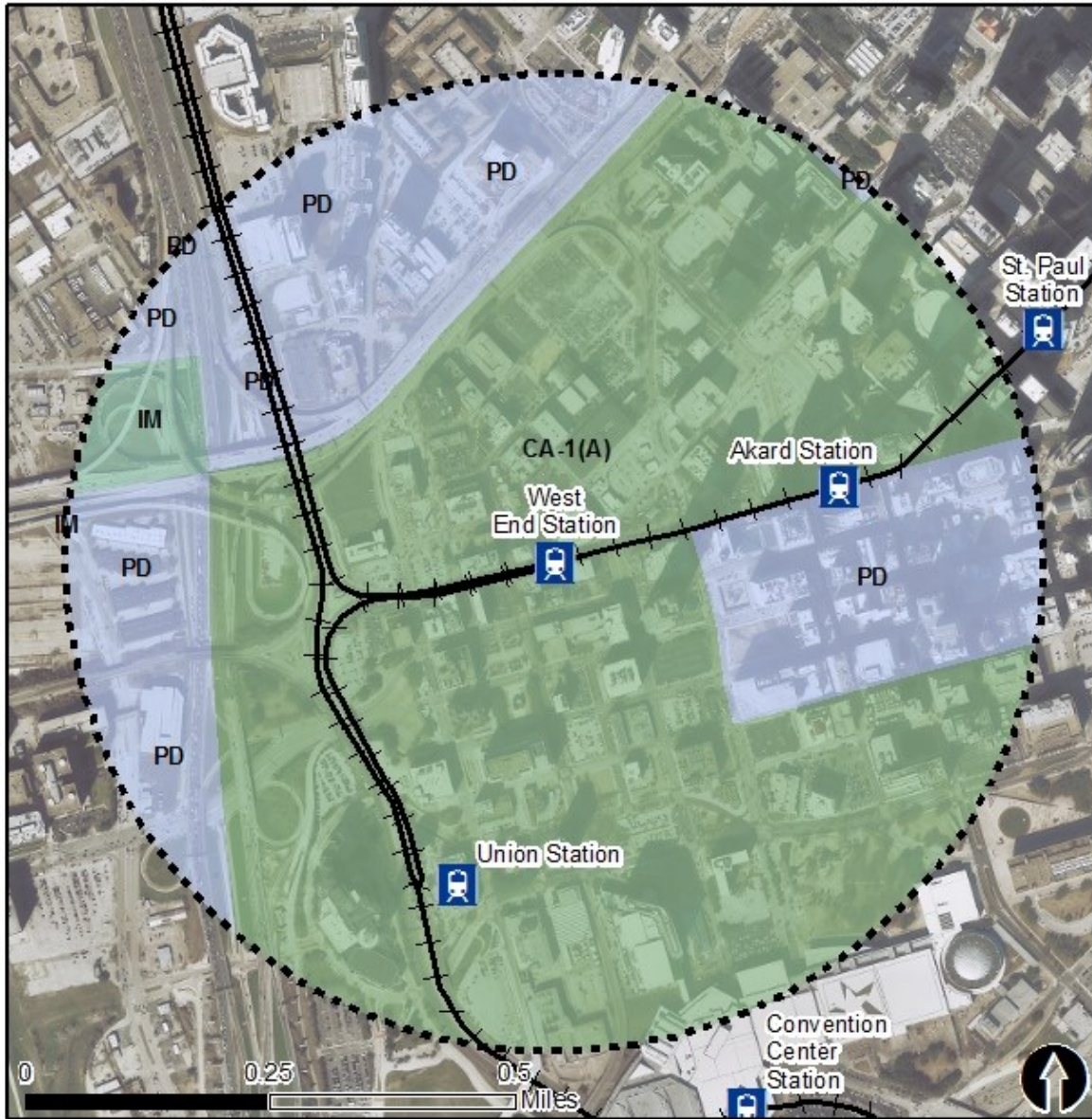


 0.5 Mile Station Buffer
  Rail Stations
  Rail Lines

## Land Use Percentages



# Zoning (2016) – West End Station



## Zoning Districts

CA-1(A), CA-2(A) – Central Area

IM – Industrial Manufacturing

PD – Planned Development

For more information on zoning, please visit the City of Dallas Zoning website at:

<http://gis.dallascityhall.com/zoningweb/>



0.5 Mile  
Station Buffer



Rail Stations



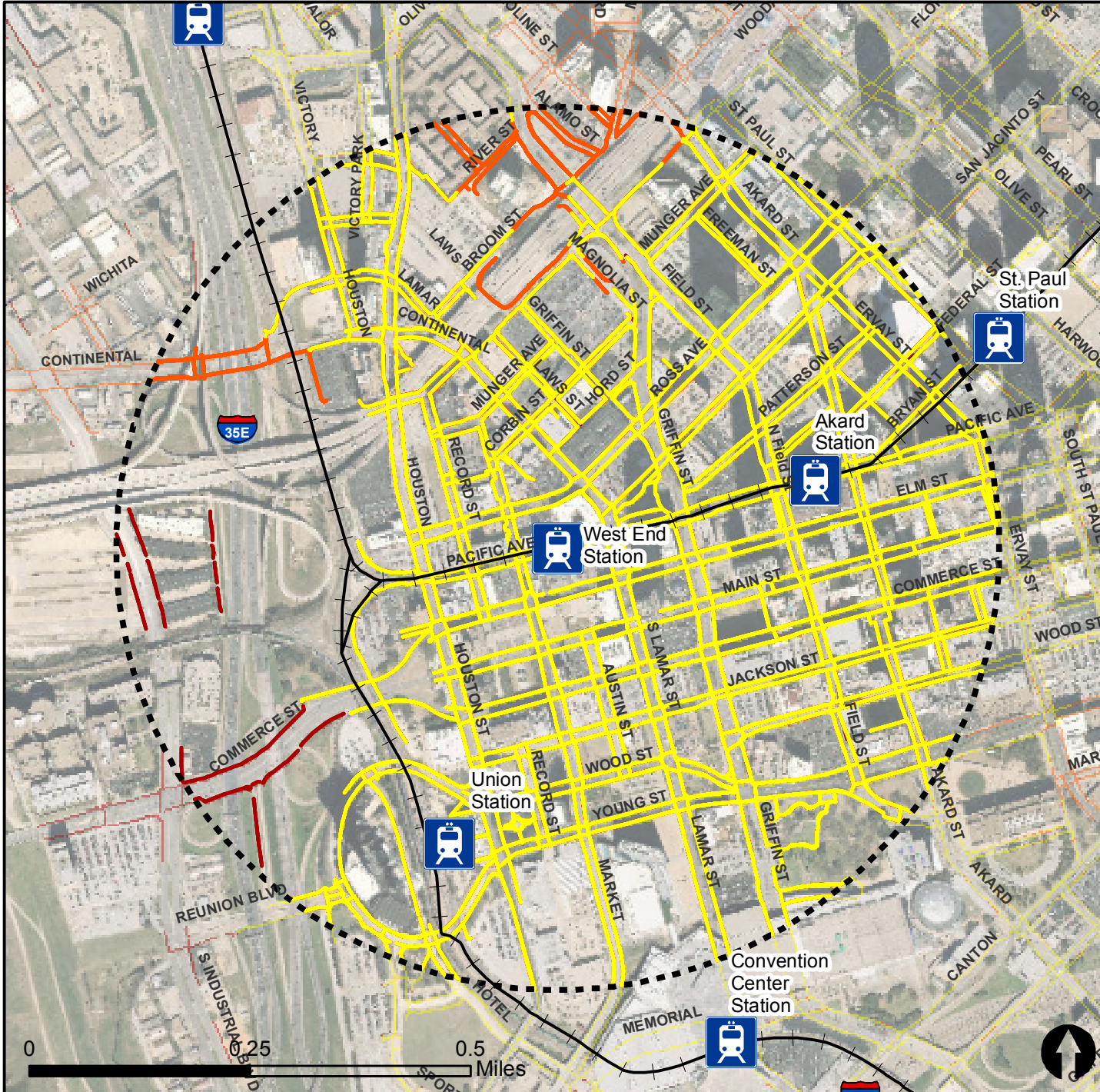
Rail Lines

# Pedestrian Routes to Rail - West End Station

Last Updated: February 2015



North Central Texas  
Council of Governments

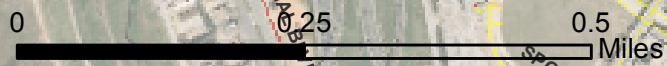
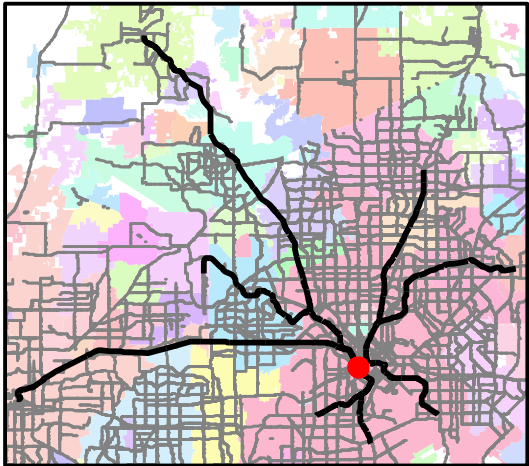


### Legend

- Rail Stations
- 0.5 Mile Station Buffer
- Railroads
- Existing sidewalk facilities within a 0.5 mile walk distance
- Existing sidewalk facilities greater than a 0.5 mile walk distance
- Existing sidewalk facilities that are disconnected due to a gap in the network

### Project Overview

The Pedestrian Routes to Rail study identifies all existing pedestrian facilities within a half-mile radius of existing light rail and commuter rail stations in the Dallas-Fort Worth region based on 2014 data. ArcGIS Network Analyst tool was used to identify continuous facilities that are less than or greater than a half-mile actual walking distance to a station. The maps also reflect existing facilities that are disconnected due to gaps or other barriers not allowing a continuous pedestrian route to a station. The maps do not reflect the condition or ADA compliance of the existing infrastructure. More information on the Routes to Rail study and methodology is available at: [nctcog.org/RoutesToRail](http://nctcog.org/RoutesToRail)

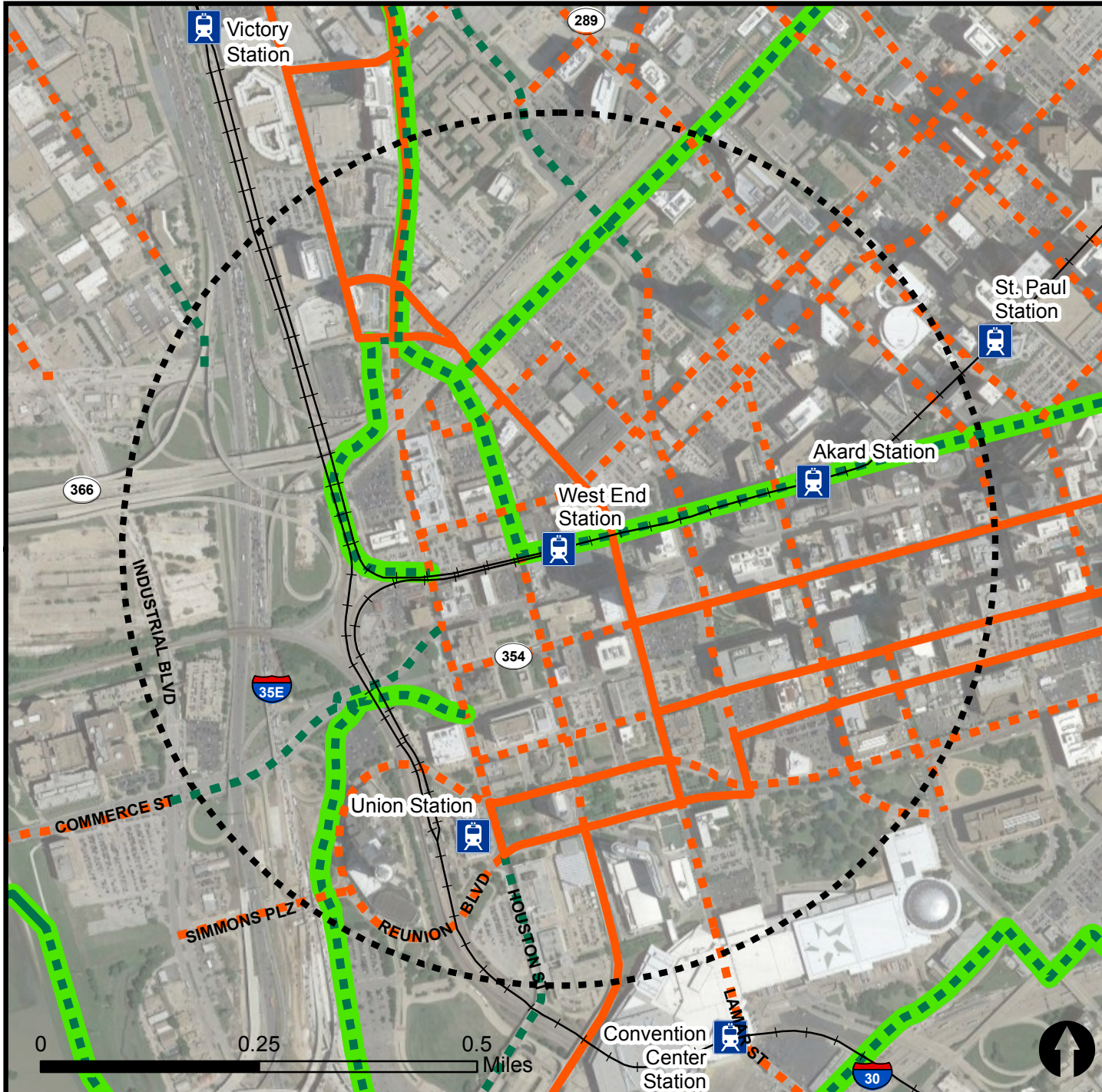


# Bicycle Routes to Rail - West End Station

Last Updated: October 2016



North Central Texas  
Council of Governments



### Legend

- Rail Stations
- 0.5 Mile Station Buffer
- Rail Lines
- On-Street Bikeway, Existing
- On-Street Bikeway, Planned
- 2040 Veloweb
- Off-Street Path, Existing
- Off-Street Path, Planned

### Project Overview

The Bicycle Routes to Rail study identifies all existing and planned bikeways in proximity to existing or under-construction light rail and commuter rail stations in the Dallas / Fort Worth region based on 2016 data. The maps reflect off-street paths (trails) and streets designated by local adopted master plans for dedicated bikeways (e.g. bike lanes, cycle tracks) located on the street. In accordance with the Texas Transportation Code, bicyclists have a right to the road. As such, the map does not reflect other roadways around the station that may have signed bike routes or by state law may be used by bicyclists. More information about the Routes to Rail study and methodology is available at: [nctcog.org/RoutesToRail](http://nctcog.org/RoutesToRail)

