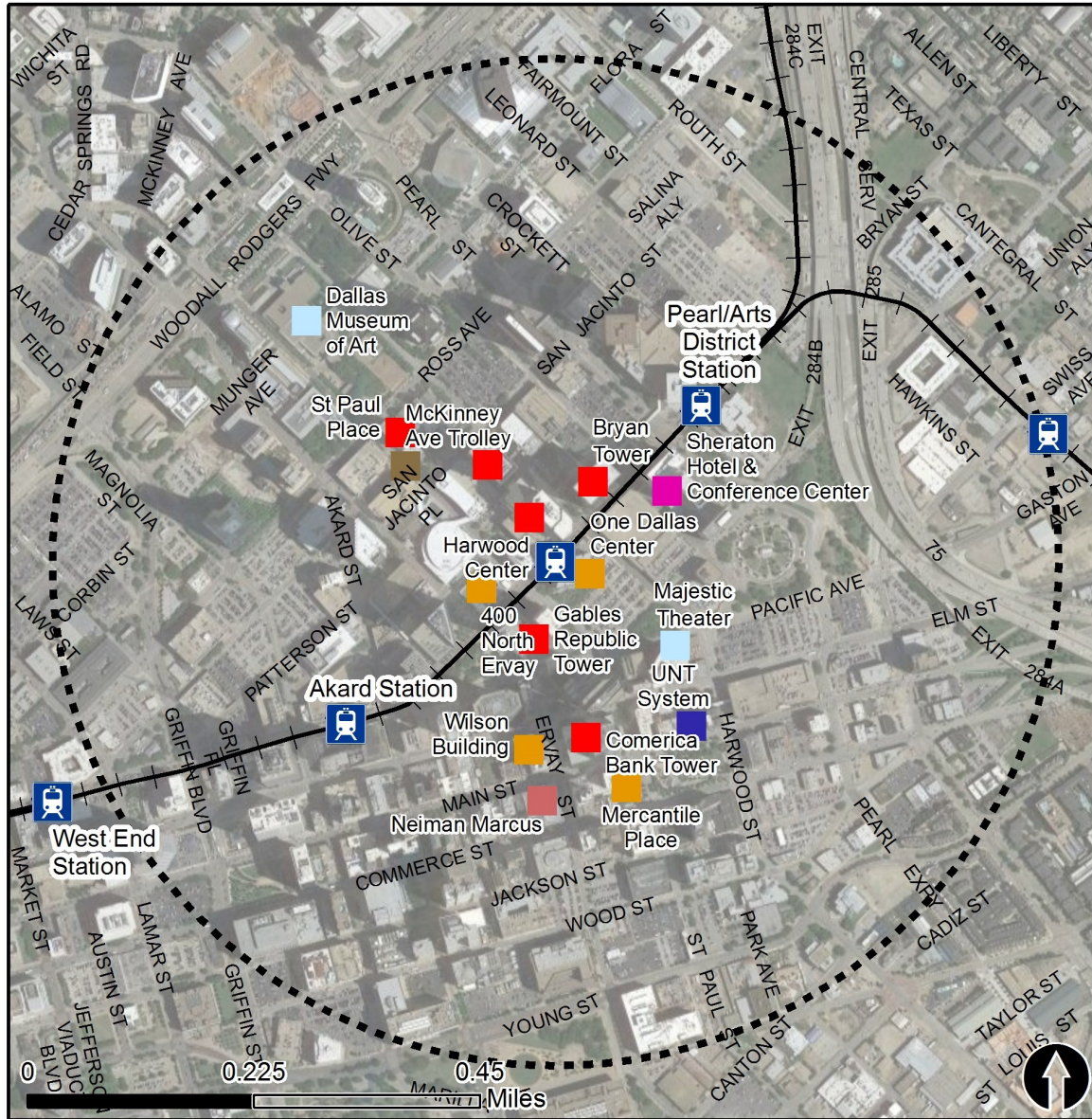


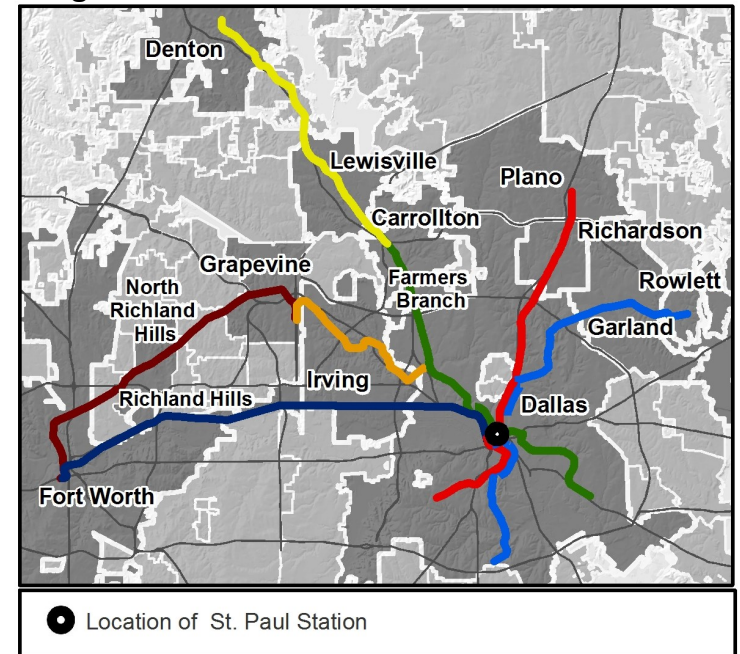
Rail Station Fact Sheet – St. Paul Station



Station Overview

St. Paul Station is located on Bryan Street, between St. Paul and Harwood Streets in downtown Dallas. The station opened in 1996 and is served by the DART Rail Red, Blue, Green, and Orange Lines.

Regional Rail Transit Lines



0.5 Mile
Station Buffer

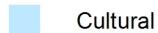


Rail Stations

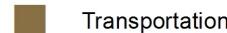


Rail Lines

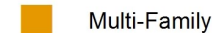
Key Developments



Cultural



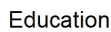
Transportation



Multi-Family



Retail



Education



Hotel



Office

Rail Station Fact Sheet – St. Paul Station



Station Characteristics¹

Address	
City	Dallas
Agency	Dallas Area Rapid Transit
Rail Line(s)	Red Line, Blue Line, Green Line, Orange Line
Corridor	Central Business District
Year Opened	1996
Park & Ride Spaces	405

Ridership¹

2015 Avg. Weekday	5,353
2015 Avg. Saturday	1,648
2015 Avg. Sunday	1,202

2014 On-Board Transit Survey: Access Mode to Station²

Bike	0.0%
Drive Alone	0.7%
Carpool	0.1%
Walk	74.2%
Drop Off	9.3%
Other	0.0%
Transit Transfer	15.7%

Station Area Plans and Studies

Title	Downtown Dallas 360
Publisher	City of Dallas
Year	2011
Web Location	http://www.downtowndallas360.com/

Station Area Characteristics (1/2 mile radius)

Demographics³

Total Population	16,298
Population Density (pop/sq. mile)	4,371
Average Median Age	34
Average Median Income	\$76,221.42

Housing³

Total Housing Units	10,769
Housing Density (units/sq. mile)	2,888
Percent Occupied	87%
Percent Owner-Occupied	16%
Percent Renter-Occupied	84%

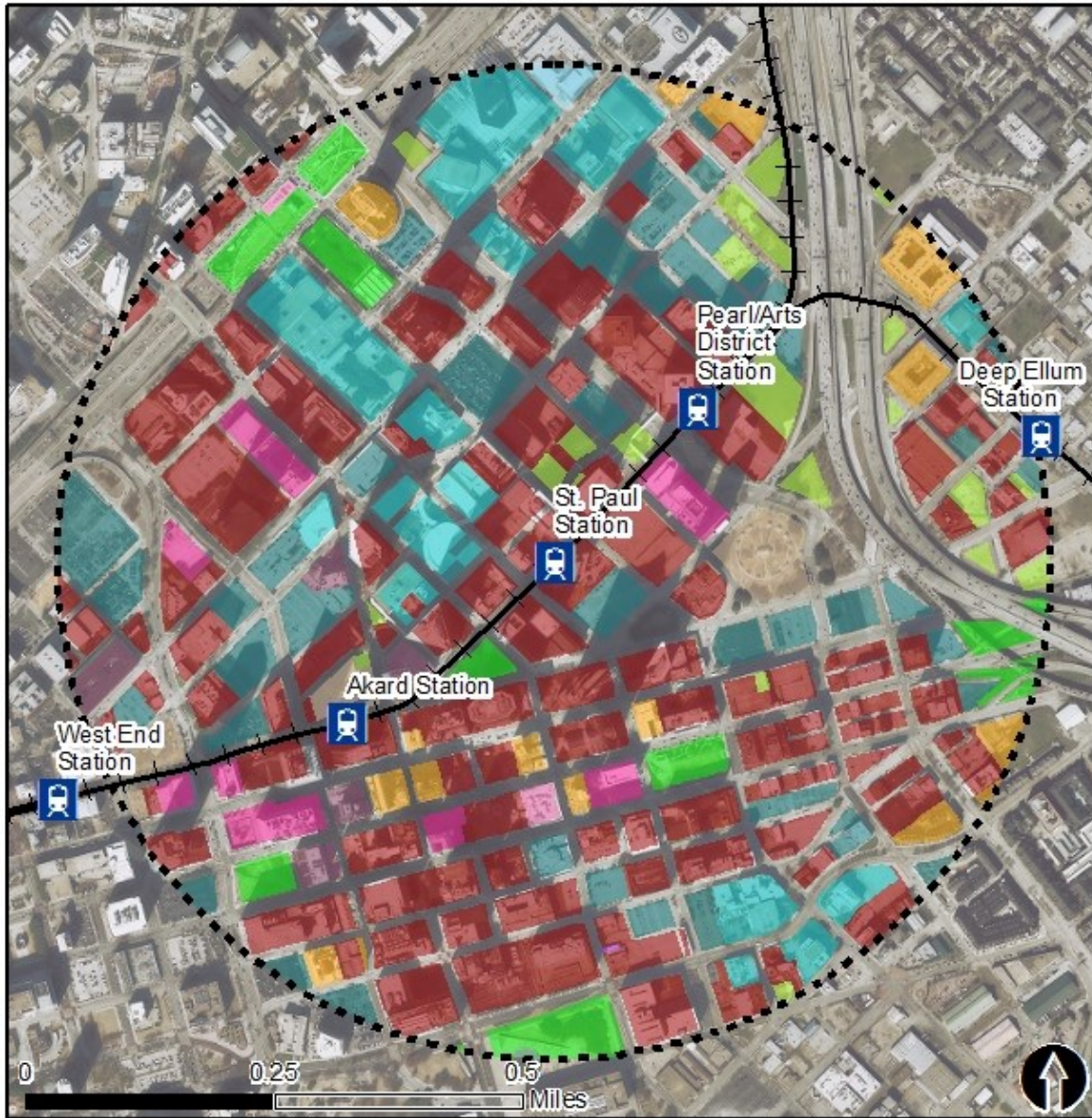
Commute To Work³

Percent Automobile	76.0%
Percent Drive Alone	69.7%
Percent Carpool	6.3%
Percent Transit	5.7%
Percent Bike	0.4%
Percent Walk	10.7%
Percent Other	0.9%
Percent Work from Home	6.2%
Percent Zero-Vehicle Households	5.4%

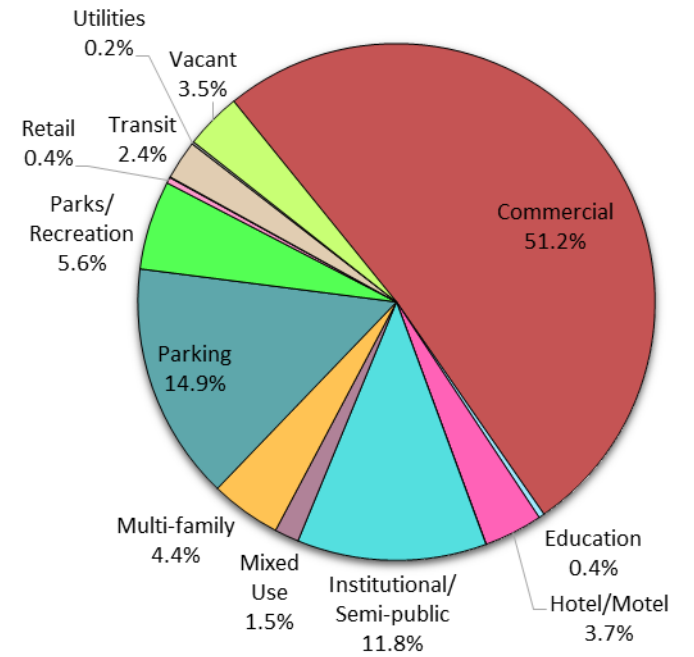
Traffic Survey Zone 2017 Employment Forecast²

Total Jobs	167,487
Job Density (jobs/sq. mile)	115,040

Land Use (2016) – St. Paul Station



Land Use Percentages

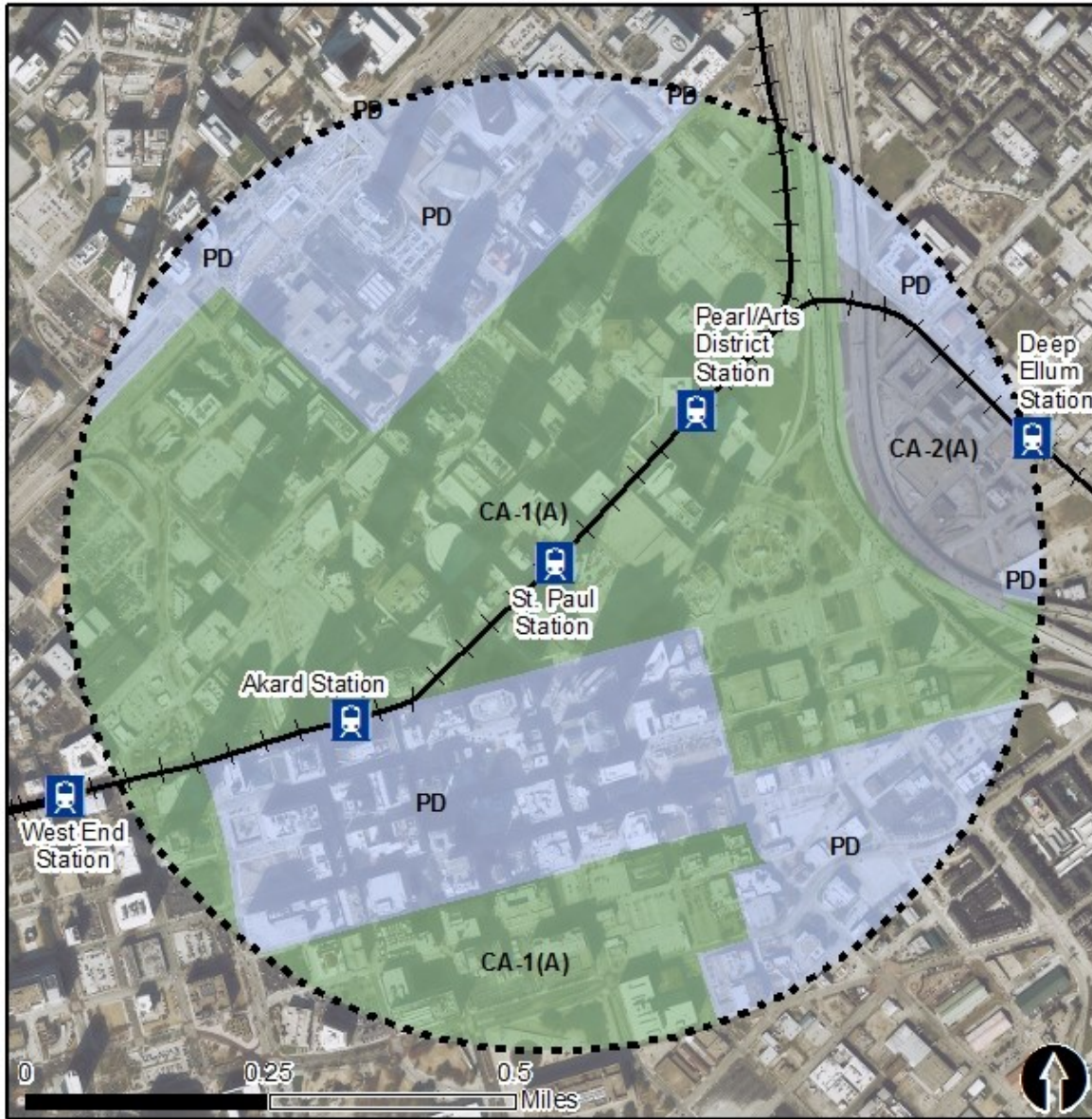


0.5 Mile
Station Buffer



Rail Stations + + Rail Lines

Zoning (2016) – St. Paul Station



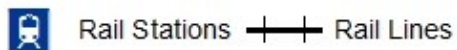
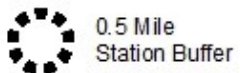
Zoning Districts

CA-1(A), CA-2(A) – Central Area

PD – Planned Development

For more information on zoning, please visit the City of Dallas Zoning website at:

<http://gis.dallascityhall.com/zoningweb/>

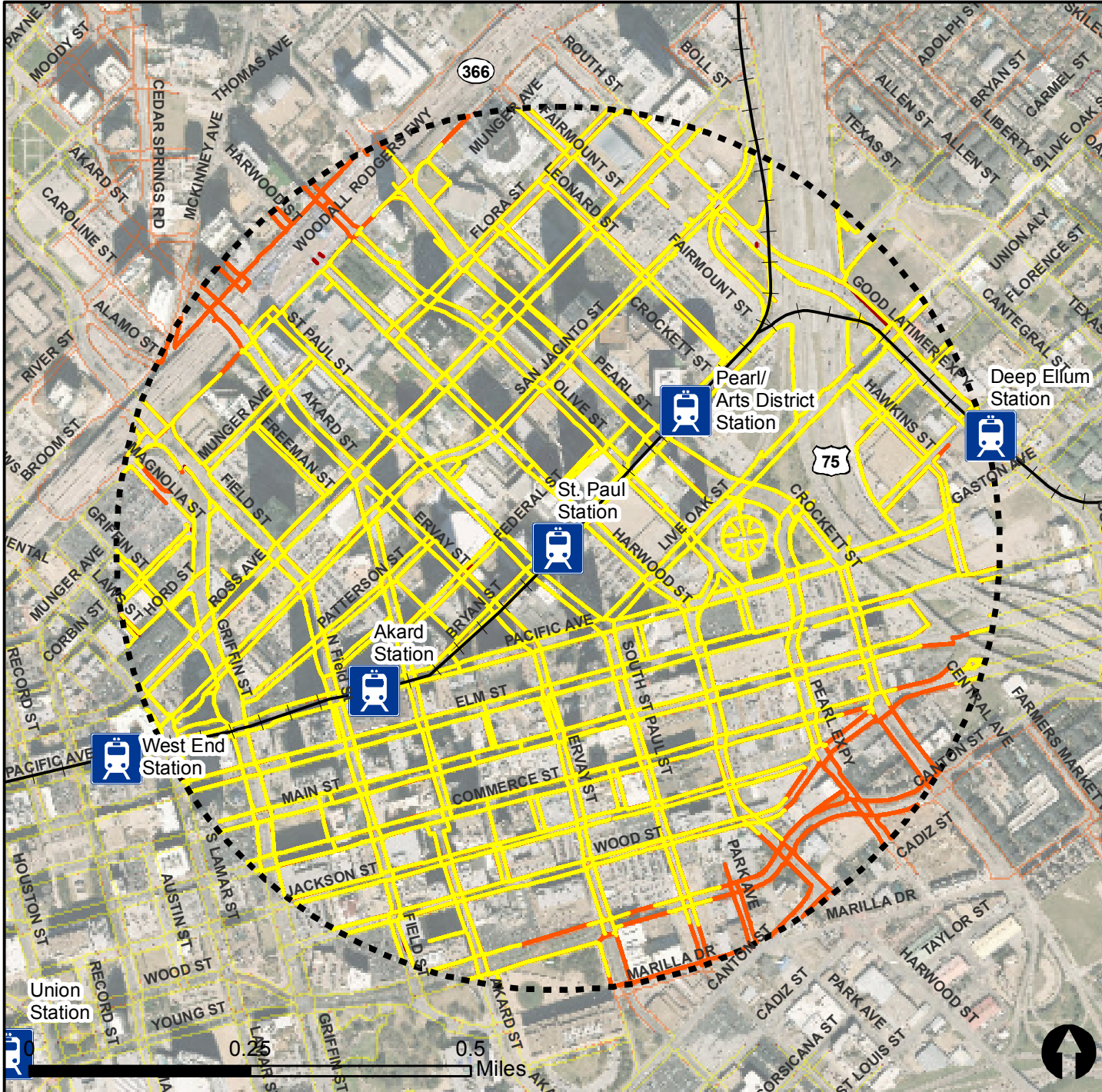


Pedestrian Routes to Rail - St. Paul Station







Last Updated: February 2015



North Central Texas
Council of Governments



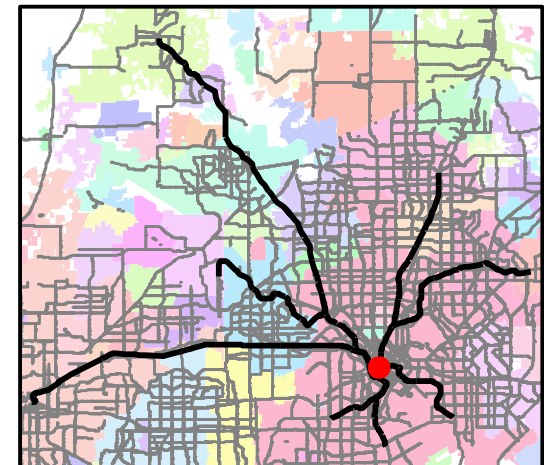
Legend

-  Rail Stations
-  0.5 Mile Station Buffer
-  Railroads
-  Existing sidewalk facilities within a 0.5 mile walk distance
-  Existing sidewalk facilities greater than a 0.5 mile walk distance
-  Existing sidewalk facilities that are disconnected due to a gap in the network

Project Overview

The Pedestrian Routes to Rail study identifies all existing pedestrian facilities within a half-mile radius of existing light rail and commuter rail stations in the Dallas-Fort Worth region based on 2014 data. ArcGIS Network Analyst tool was used to identify continuous facilities that are less than or greater than a half-mile actual walking distance to a station. The maps also reflect existing facilities that are disconnected due to gaps or other barriers not allowing a continuous pedestrian route to a station. The maps do not reflect the condition or ADA compliance of the existing infrastructure. More information on the Routes to Rail study and methodology is available at:

nctcog.org/RoutesToRail



Bicycle Routes to Rail - St. Paul Station

Last Updated: October 2016



North Central Texas
Council of Governments



Legend

- Rail Stations
- 0.5 Mile Station Buffer
- Rail Lines
- On-Street Bikeway, Existing
- On-Street Bikeway, Planned
- 2040 Veloweb
- Off-Street Path, Existing
- Off-Street Path, Planned

Project Overview

The Bicycle Routes to Rail study identifies all existing and planned bikeways in proximity to existing or under-construction light rail and commuter rail stations in the Dallas / Fort Worth region based on 2016 data. The maps reflect off-street paths (trails) and streets designated by local adopted master plans for dedicated bikeways (e.g. bike lanes, cycle tracks) located on the street. In accordance with the Texas Transportation Code, bicyclists have a right to the road. As such, the map does not reflect other roadways around the station that may have signed bike routes or by state law may be used by bicyclists. More information about the Routes to Rail study and methodology is available at:

nctcog.org/RoutesToRail

