



# Disaster Response Plan

# Building Official Association of Texas

- Non-profit professional organization of Building Officials, building inspectors, code officials and industry professionals from the built environment.
  - Membership of over 300.
- TML Affiliate
  - Over 1100 jurisdictions are TML members.
- State Chapter for the International Code Council.

# Disasters in Texas

- Floods – Wichita Falls, Austin
- Wild Fire – Amarillo, Bastrop
- Hurricane – Galveston, etc...
- Tornado – Cleburne, Glen Rose, etc...
- Earthquake – Irving 3.4, West Dallas 3.1
- Explosion or Terrorist Attack – West
- Extreme Heat, Drought, Thunderstorms (lighting)
  - Not likely – Volcanoes, Tsunami, Landslide, Extreme Cold



24-Apr-2013 1540 UTC | 31.818649, -97.090218  
1412 North Davis Street, West, TX 76691, USA



24-Apr-2013 1545 UTC | 31.818624, -97.090202  
1410 North Davis Street, West, TX 76691, USA



24-Apr-2013 1922 UTC | 31.818758, -97.088295  
1500 Stillmeadow Drive, West, TX 76691, USA



27-Apr-2013 1255 UTC | 31.816536, -97.090973  
1300-1398 North Davis Street, West, TX 76691, USA



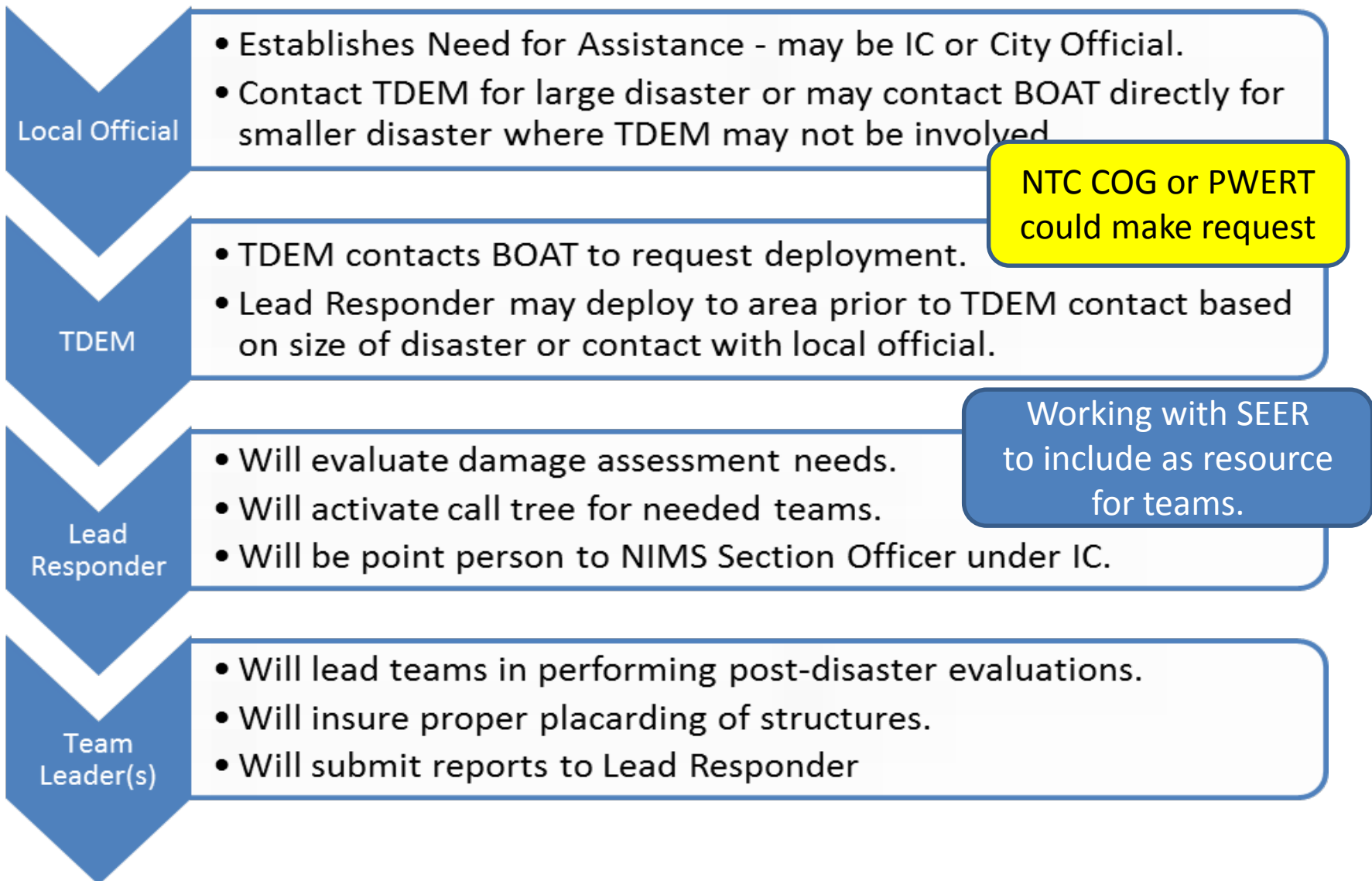




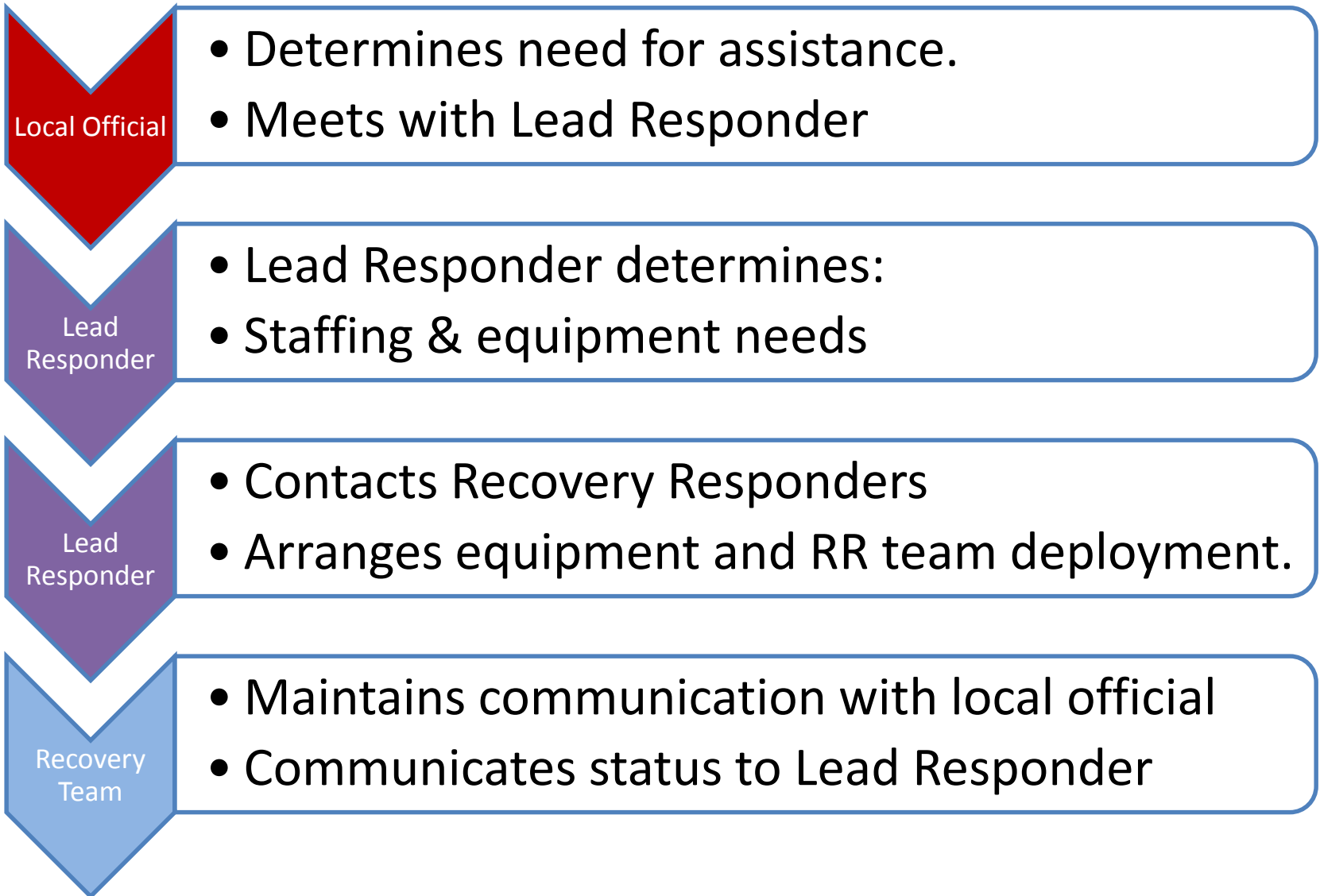
# BOAT's Goal

- Regardless of the scope of disaster or damage:
  - Provide rapid or detailed evaluation safety assessment of all structures in damaged area. By Certified Disaster Response Inspectors.
    - Condition of the building for re-entry.
      - Unsafe, Restricted Use, or Inspected.
      - Other hazards, environmental or other.
    - Estimated % of damage.
    - Determine if structural engineering analysis is needed.
    - Reconnection of utilities to structures.
  - Provide post-disaster recovery aid in permitting repairs and inspection of repairs or reconstruction.

# Initiating Damage Assessment Response

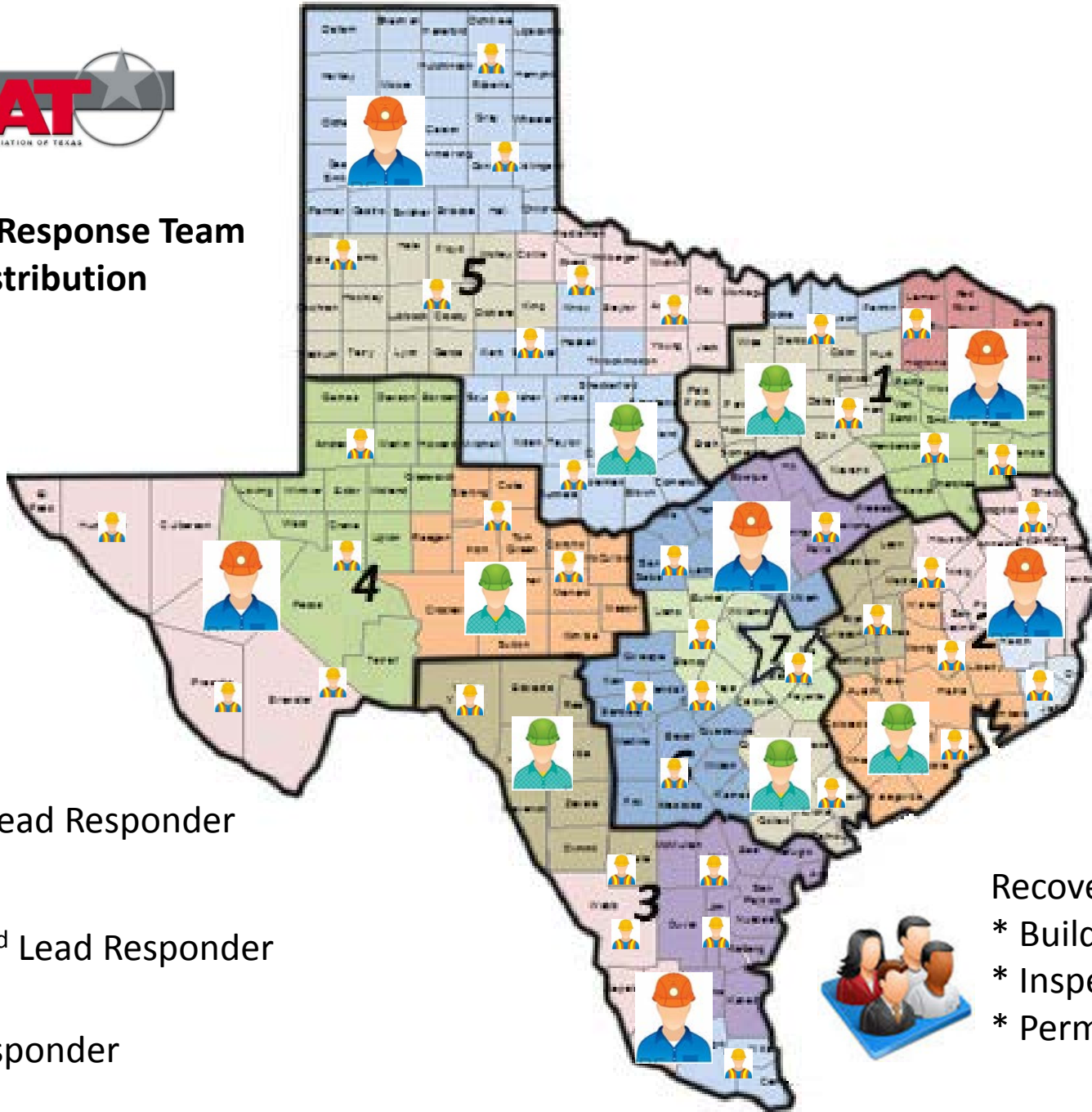


# Post Damage Assessment Recovery Assistance





# Disaster Response Team Distribution



Lead Responder



2<sup>nd</sup> Lead Responder



Responder



Recovery Responders

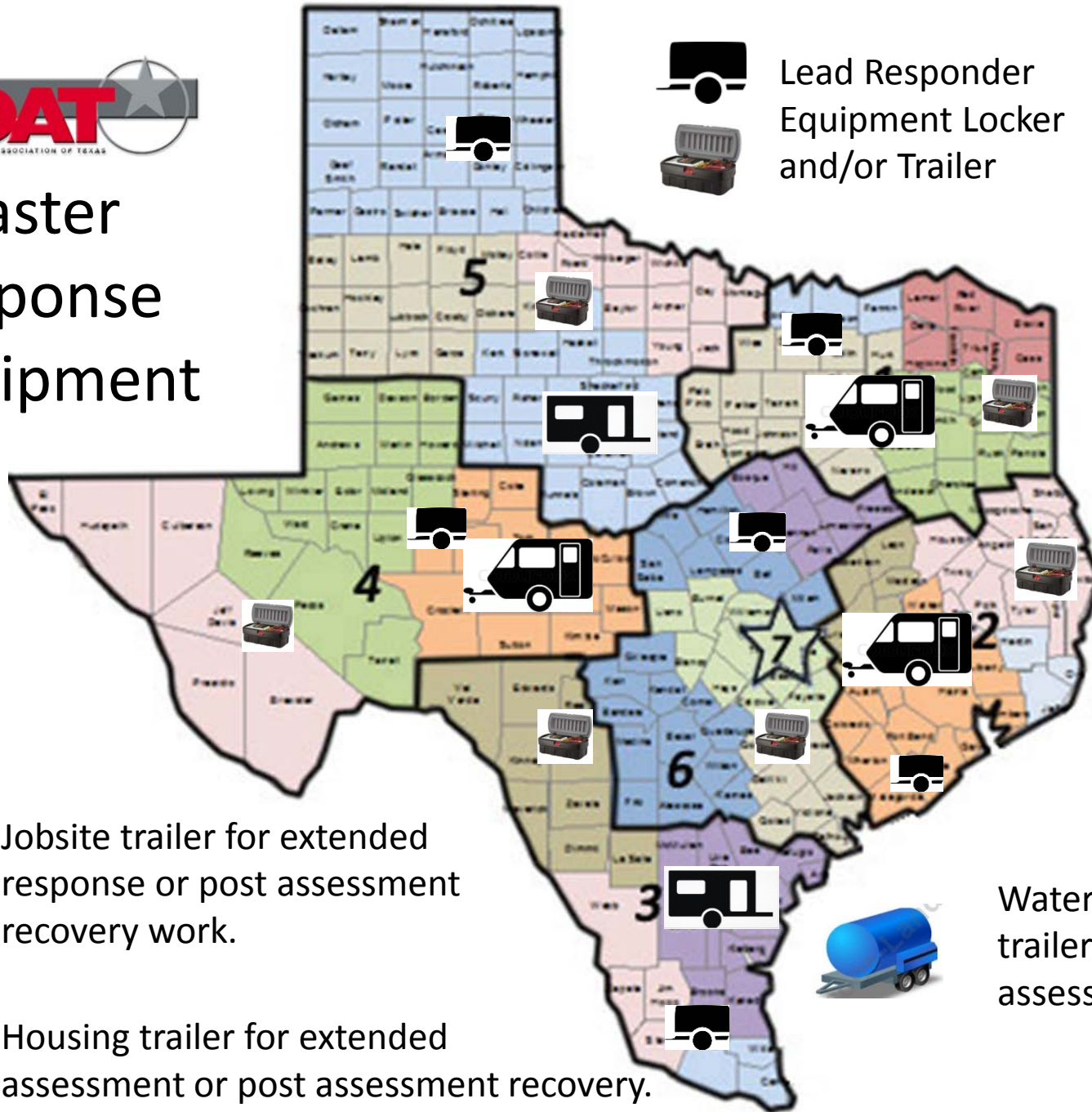
\* Building Official


\* Inspectors


\* Permit Techs





# Disaster Response Equipment



 Lead Responder Equipment Locker and/or Trailer

 Jobsite trailer for extended response or post assessment recovery work.

 Housing trailer for extended assessment or post assessment recovery.

 Water/waste water trailer for extended assessment.