

Hood County

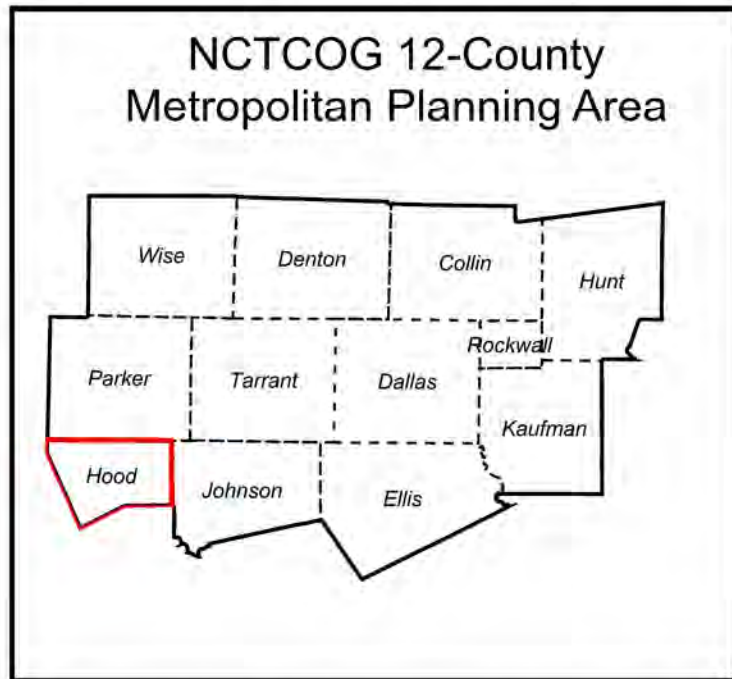
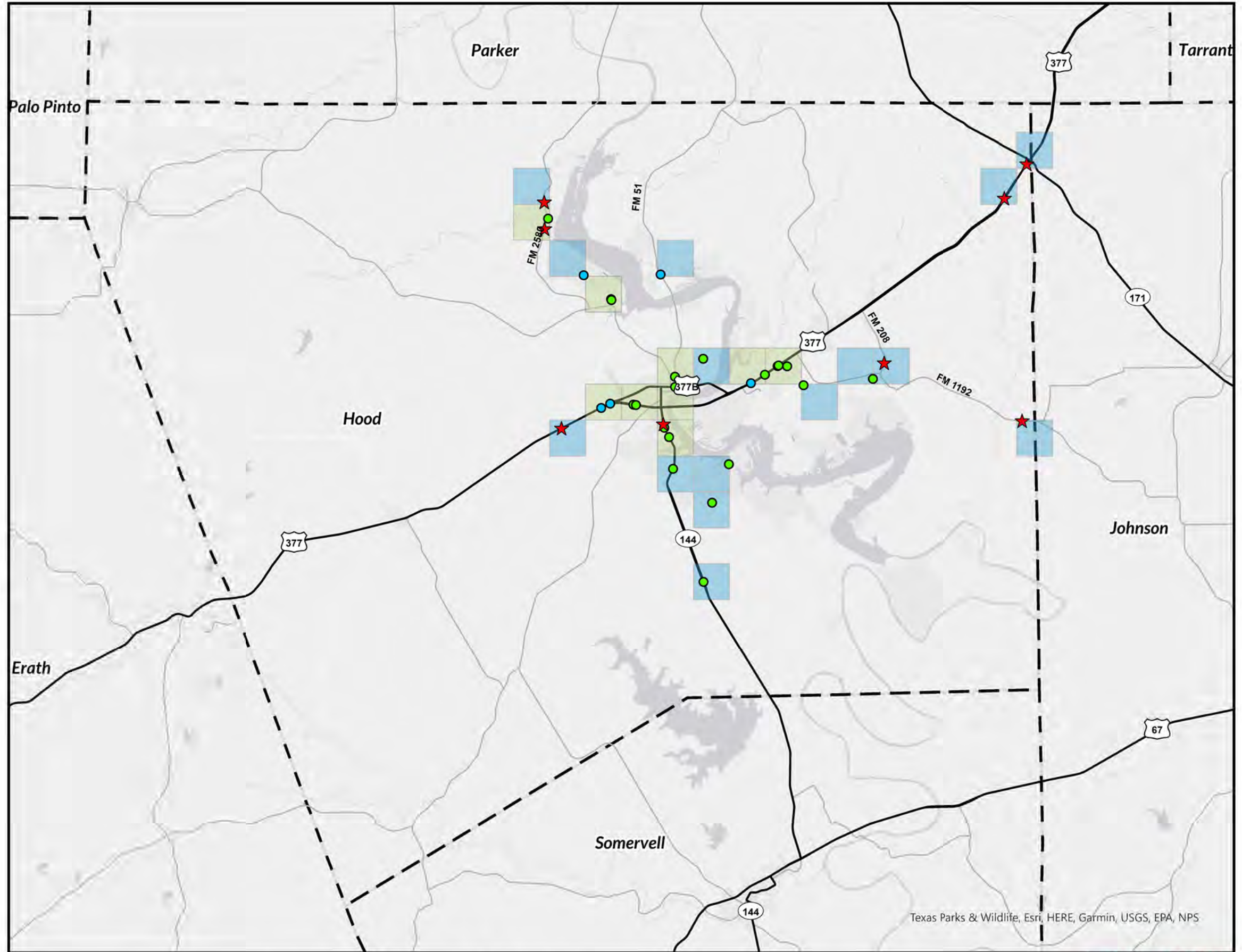
Bicycle and Pedestrian
Crashes per Square Mile
(2018 - 2022)

Legend

- ★ Fatal Bicycle or Pedestrian Crash (8)
- Non-Fatal Bicycle Crash (7)
- Non-Fatal Pedestrian Crash (20)
- Highway
- Major Arterial Road
- Passenger Rail Line
- - - Counties

Crashes per Square Mile

- 1
- 2 - 5
- 6 - 9
- 10+



1.) Source: TxDOT's Crash Records Information System; 2018-2022 data is current as of April 2023. All TxDOT disclaimers apply.
 2.) Data displayed contains reportable crashes with latitude and longitude information. Additional crashes may have occurred.
 3.) This data is composed of TxDOT "Reportable Crashes" that occurs or originates on a traffic way, results in injury to or death of any person, or damage to the property of any person to the apparent extent of \$1,000.

