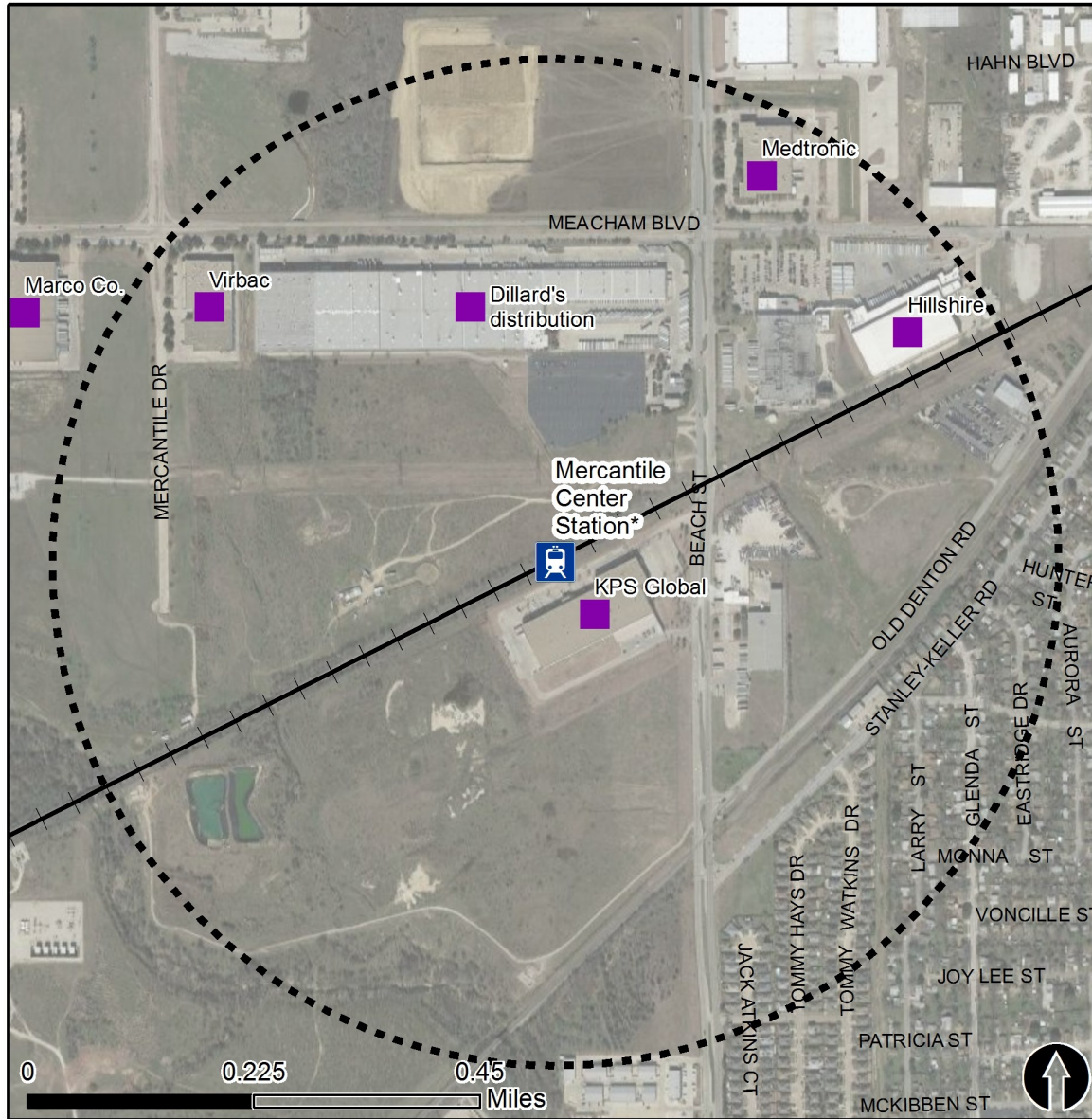


# Rail Station Fact Sheet – Mercantile Center Station\*

(\*station under construction with anticipated start of service in late 2018)



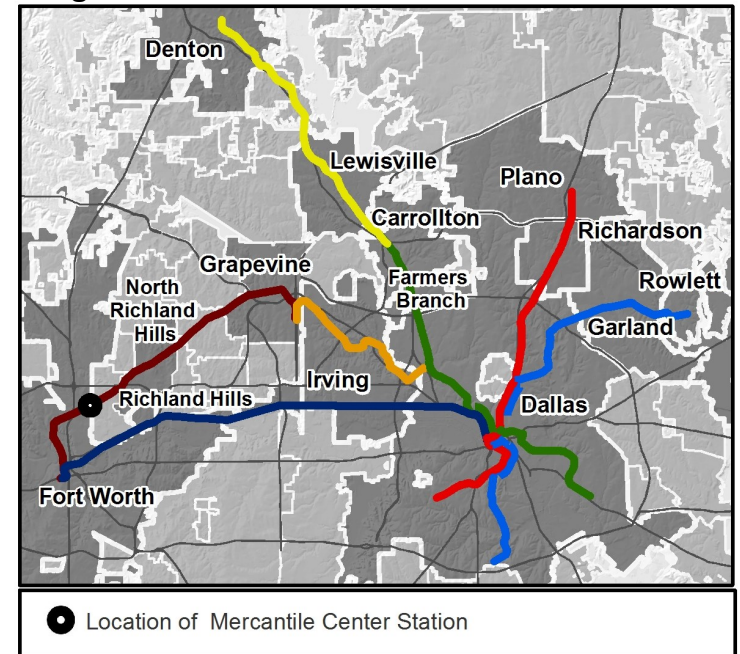
North Central Texas  
Council of Governments



## Station Overview

Mercantile Center Station will be located in Fort Worth on the west side of Beach Street near its intersection with the TEX Rail Line. The station's anticipated opening will be in late 2018 as part of TEX Rail service from Downtown Fort Worth to DFW International Airport Terminal B.

## Regional Rail Transit Lines



● Location of Mercantile Center Station



0.5 Mile  
Station Buffer



Rail Stations



Rail Lines

## Key Developments



Industrial

# Rail Station Fact Sheet – Mercantile Center Station\*

(\*station under construction with anticipated start of service in late 2018)



North Central Texas  
Council of Governments

## Station Characteristics<sup>1</sup>

Address	4001 N. Beach Street
City	Fort Worth
Agency	Fort Worth Transportation Authority
Rail Line(s)	TEX Rail
Corridor	TEX Rail
Year Opened	2018
Park & Ride Spaces	318

## Ridership<sup>1</sup>

2015 Avg. Weekday	N/A
2015 Avg. Saturday	N/A
2015 Avg. Sunday	N/A

## 2014 On-Board Transit Survey: Access Mode to Station<sup>2</sup>

Bike	N/A
Drive Alone	N/A
Carpool	N/A
Walk	N/A
Drop Off	N/A
Other	N/A
Transit Transfer	N/A

## Station Area Plans and Studies

Title	Beach Street Station Area Plan
Publisher	FWTA and the City of Fort Worth
Year	2009
Web Location	<a href="http://www.texrail.com/About/RouteandStations/Stations.aspx">http://www.texrail.com/About/RouteandStations/Stations.aspx</a>

## Station Area Characteristics (1/2 mile radius)

### Demographics<sup>3</sup>

Total Population	9,177
Population Density (pop/sq. mile)	1,081
Average Median Age	31
Average Median Income	\$48,235.17

### Housing<sup>3</sup>

Total Housing Units	2,787
Housing Density (units/sq. mile)	328
Percent Occupied	94%
Percent Owner-Occupied	65%
Percent Renter-Occupied	35%

### Commute To Work<sup>3</sup>

Percent Automobile	97.0%
Percent Drive Alone	81.2%
Percent Carpool	15.8%
Percent Transit	0.0%
Percent Bike	0.4%
Percent Walk	0.0%
Percent Other	1.4%
Percent Work from Home	1.2%
Percent Zero-Vehicle Households	1.7%

### Traffic Survey Zone 2017 Employment Forecast<sup>2</sup>

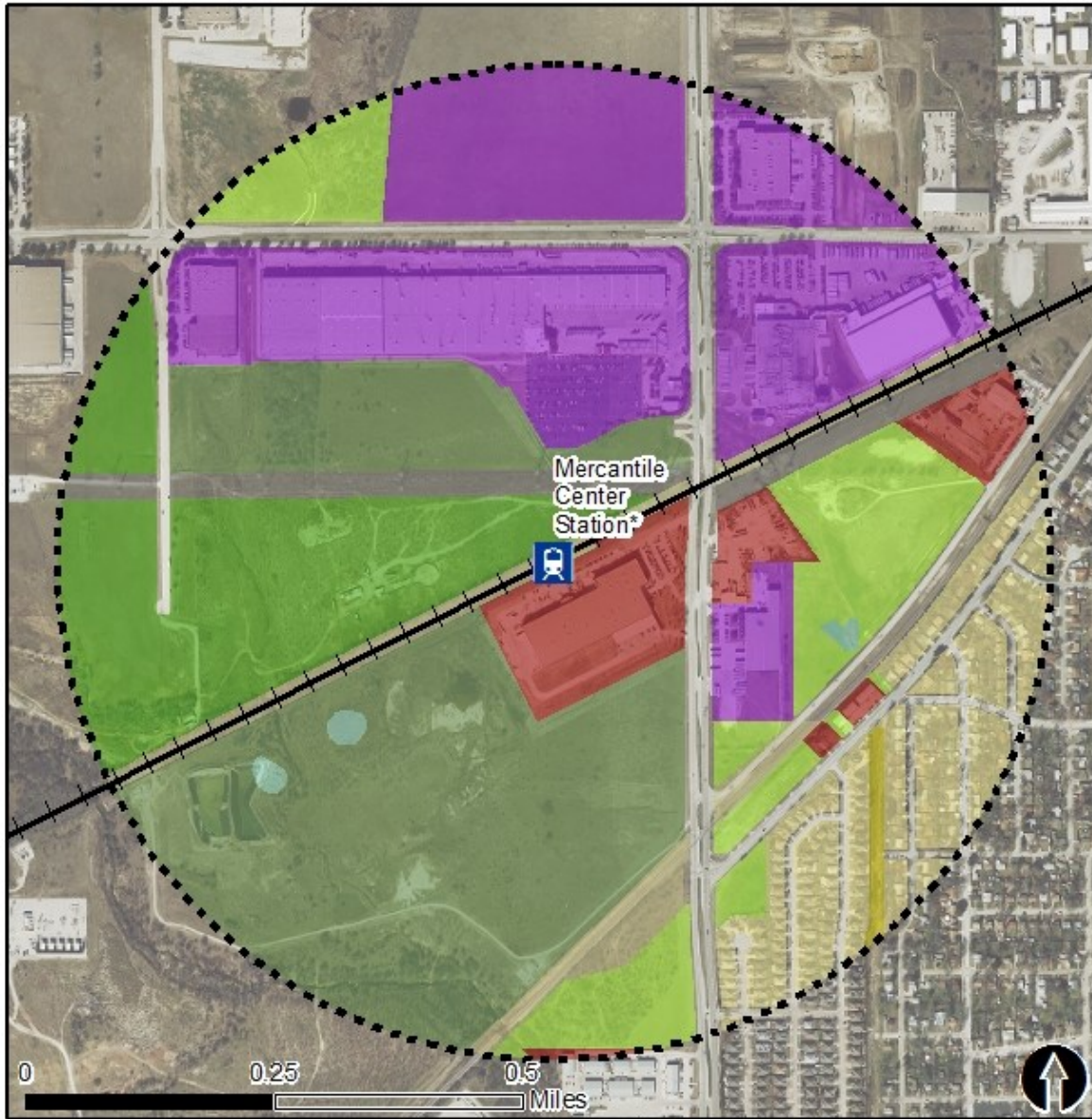
Total Jobs	15,754
Job Density (jobs/sq. mile)	3,550

# Land Use (2016) – Mercantile Center Station\*

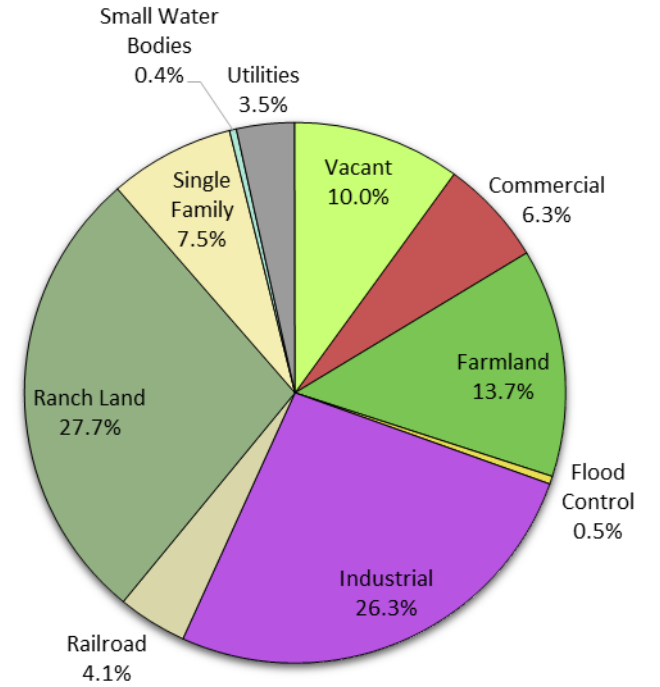
(\*station under construction with anticipated start of service in late 2018)



North Central Texas  
Council of Governments



## Land Use Percentages



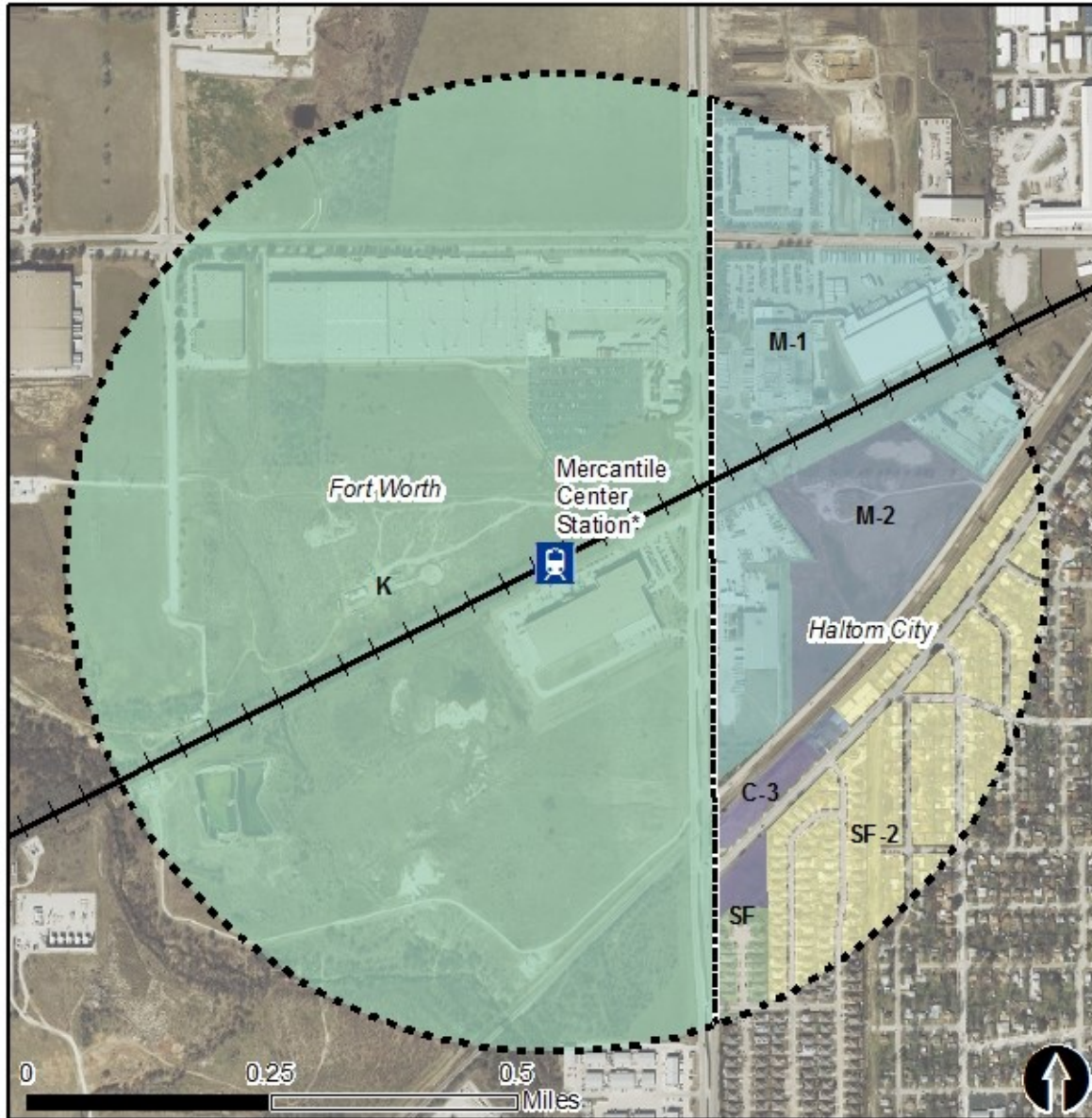
Rail Stations + + Rail Lines

# Zoning (2016) – Mercantile Center Station\*

(\*station under construction with anticipated start of service in late 2018)



North Central Texas  
Council of Governments



## Zoning Districts

### Forth Worth (2016)

K – Heavy Industrial

### Haltom City (2016)

M-1 – Industrial

M-2 – Light Industrial

C-3 – Commercial

SF-2 – Single Family Residential

For more information on zoning, please visit the City websites at:

Fort Worth

<http://fortworthtexas.gov/zoning/>

Haltom City:

<http://www.haltomcitytx.com/departments/planning-community-development>



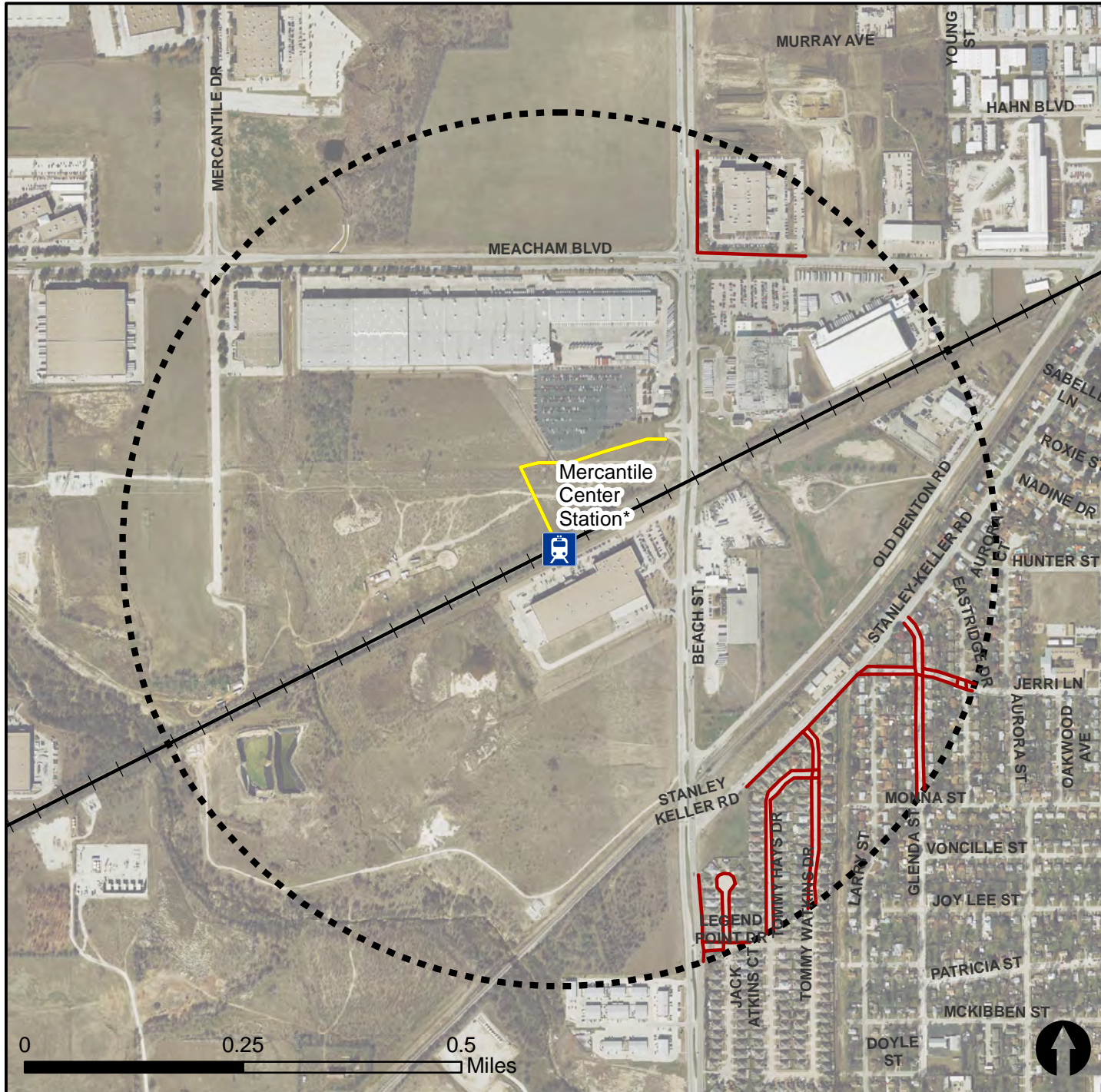
0.5 Mile  
Station Buffer



Rail Stations + + Rail Lines

# Pedestrian Routes to Rail - Mercantile Center Station\*

Last Updated: October 2016 (\*Station under construction with anticipated start of service in late 2018)

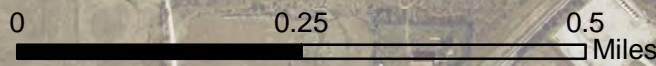
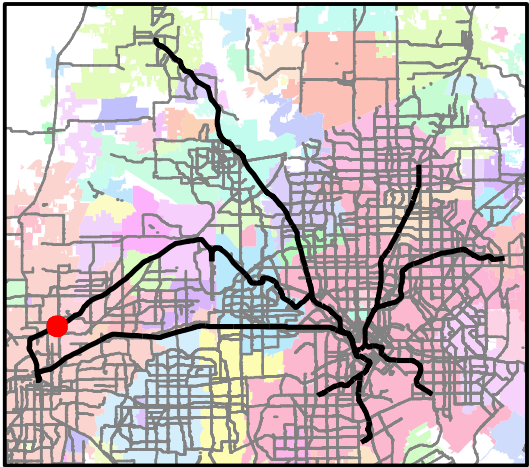


### Legend

- Rail Stations
- 0.5 Mile Station Buffer
- Railroads
- \*Platform connecting sidewalk constructed with station
- Existing sidewalk facilities greater than a 0.5 mile walk distance
- Existing sidewalk facilities that disconnected due to a gap in the network

### Project Overview

The Pedestrian Routes to Rail study identifies all existing pedestrian facilities within a half-mile radius of existing light rail and commuter rail stations in the Dallas-Fort Worth region based on 2014 data. ArcGIS Network Analyst tool was used to identify continuous facilities that are less than or greater than a half-mile actual walking distance to a station. The maps also reflect existing facilities that are disconnected due to gaps or other barriers not allowing a continuous pedestrian route to a station. The maps do not reflect the condition or ADA compliance of the existing infrastructure. More information on the Routes to Rail study and methodology is available at: [nctcog.org/RoutesToRail](http://nctcog.org/RoutesToRail)

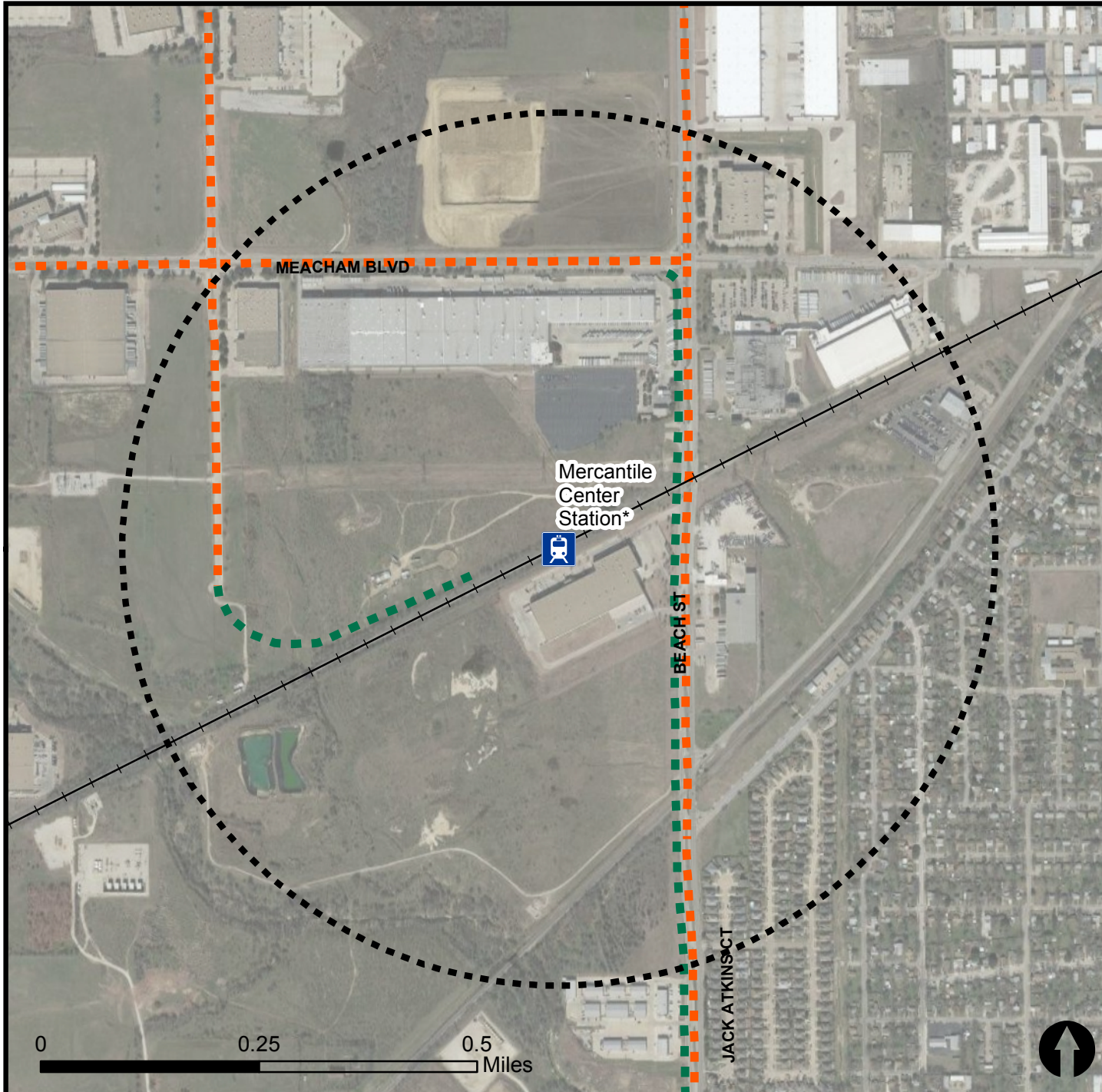


# Bicycle Routes to Rail - Mercantile Center Station\*

Last Updated: October 2016 (\*Station under construction with anticipated start of service in late 2018)



North Central Texas  
Council of Governments



## Legend

- Rail Stations
- 0.5 Mile Station Buffer
- Rail Lines
- On-Street Bikeway, Existing
- On-Street Bikeway, Planned
- 2040 Veloweb
- Off-Street Path, Existing
- Off-Street Path, Planned

## Project Overview

The Bicycle Routes to Rail study identifies all existing and planned bikeways in proximity to existing or under-construction light rail and commuter rail stations in the Dallas / Fort Worth region based on 2016 data. The maps reflect off-street paths (trails) and streets designated by local adopted master plans for dedicated bikeways (e.g. bike lanes, cycle tracks) located on the street. In accordance with the Texas Transportation Code, bicyclists have a right to the road. As such, the map does not reflect other roadways around the station that may have signed bike routes or by state law may be used by bicyclists. More information about the Routes to Rail study and methodology is available at:

[nctcog.org/RoutesToRail](http://nctcog.org/RoutesToRail)

