

Grapevine GIS Projects & Infrastructure: Keeping the Map Current



BETSI CHATHAM, GIS MANAGER

- **BACKGROUND HISTORY**
- **COLLABORATION RELATIONSHIP**
- **IDENTIFY INTEGRATION STEPS**
- **ARCGIS ONLINE MIGRATION**
- **INFRASTRUCTURE PLANNING**
- **DATA INTEGRITY**
- **ARCGIS FIELD MAPS**
- **ARCGIS SURVEY123**



BACKGROUND HISTORY

- Pre-1999 City of Grapevine utilized contractors for GIS
- 1999 Grapevine GIS established
- Early 2000s Public Works GIS established
- Database Silos (on-prem & off-prem)
- Licensing Centralized
- Separate ArcGIS Online Organizations
- WHERE WAS THE TRUSTING RELATIONSHIP???



COLLABORATION RELATIONSHIP

- Initiated monthly technical & management meetings
- Off loaded data & projects to appropriate GIS staff
- Develop & adopt map standards
- GIS desktop & laptop tier standards
- Discuss Enterprise GIS software & products



**North Central Texas
Council of Governments**



COLLABORATION RELATIONSHIP



BETSI CHATHAM, GISP
GIS MANAGER



MICHAEL ROGERS, GISP
GIS ANALYST



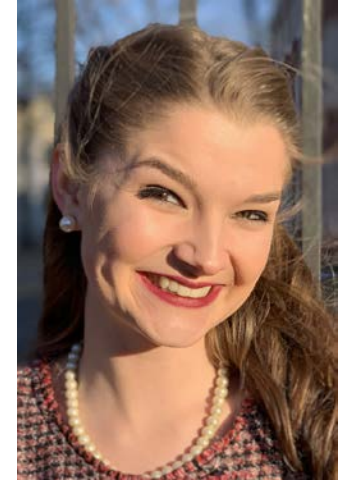
LARRY BLAKE
GIS TECHNICIAN



ADI LEBRON, GISP
GIS ENGINEER SPECIALIST



EMMA LEARY
GIS TECHNICIAN



PAULINA HRUSKOCI
GIS INTERN

GRAPEVINE GIS PARTNERS IN CRIME

IDENTIFY INTEGRATION STEPS

- Reduce costs of infrastructure and licensing
- ArcGIS Online migration
- Centralized on-prem infrastructure
- Proposed Grapevine GIS & Public Works integration
- IT & PW Directors APPROVED



ARCGIS ONLINE MIGRATION

- **AGO Organizations**
 - **Grapevine GIS Small Government Enterprise License Agreement**
 - **Public Works GIS separate @ \$10K annual cost**
- **AGO Migration**
 - **50 PWGIS AGO Users migrated to Grapevine GIS AGO**
 - **PWGIS 60+ Content items migrated**
 - **\$10K annual savings**



INFRASTRUCTURE PLANNING

- Database Silos (on-prem & off-prem)
- Centralized on-prem infrastructure
- Migrate Public Works GIS off 3rd party supported servers
 - Databases to on-prem ArcGIS Enterprise
 - \$30K annual savings
- ArcGIS Pro 3.0 deployment
 - GIS desktop & laptop tier standards



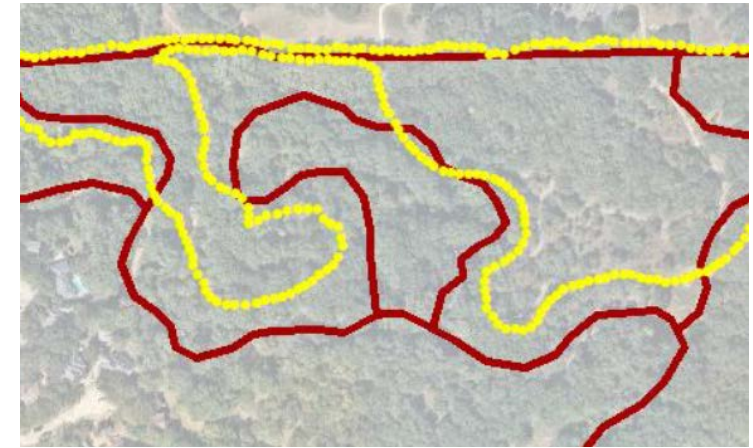
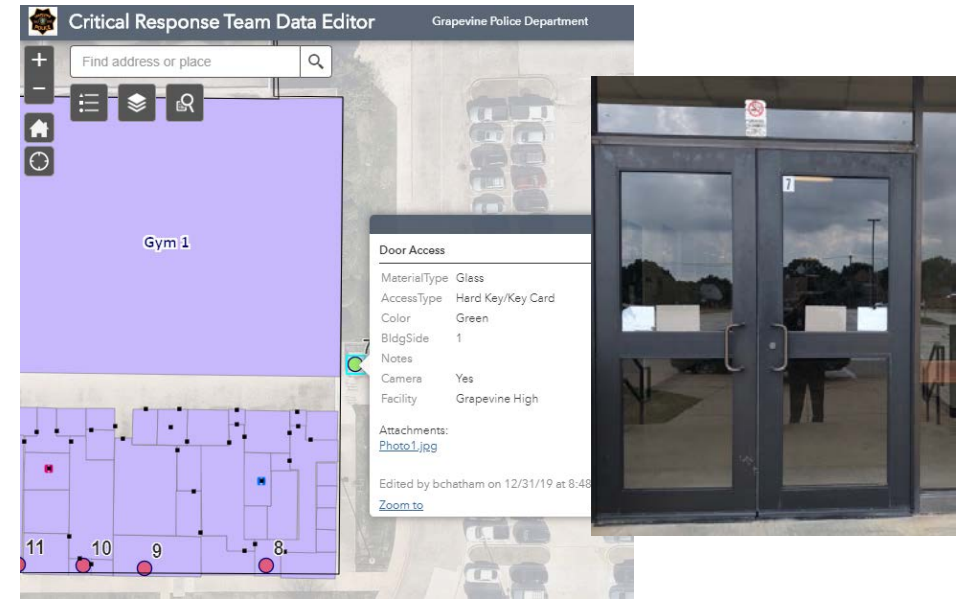
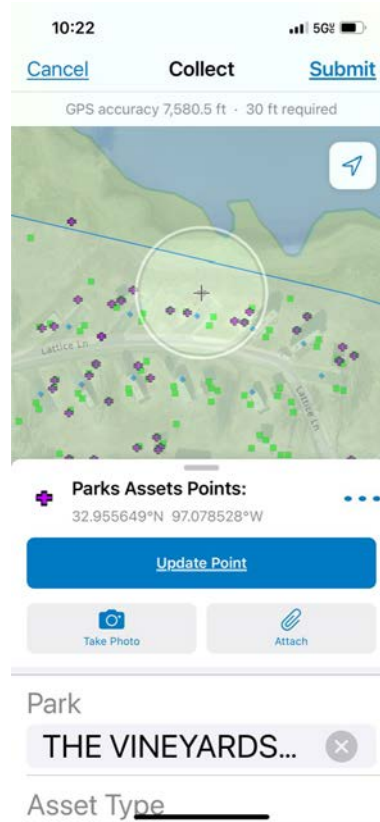
DATA INTEGRITY

- 25 Years of Data
- Data maintenance anyone?
- Redundancy of datasets
- 10 Enterprise Geodatabases
- Identify low-hanging fruit
- Geometry, schema & topology
- Fieldwork



ARCGIS FIELD MAPS

- New & old feature classes
- ArcGIS Tracker
- Aged data as reference
- Collect & QA/QC
- Condition of features
- Geotagged photos



ARCGIS SURVEY123

GFD Life Jacket Field Count

Used to conduct field counts of life jackets

Your Name*

Date*

Time*

Location*

Lakeview

Oak Grove

Meadowmere

Rockledge

Sandbass

Shop Local: Open Food and Services in Grapevine Survey

The survey will enable Grapevine business owners to post their business operating capacity, and then the public can view in the [Shop Local: Open Food & Services in Grapevine](#) web app during the COVID-19 pandemic.

Fill out only information applicable to business.

* indicates a required field.

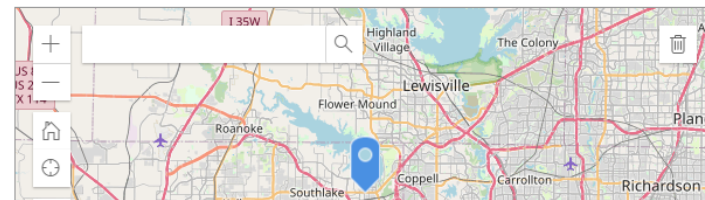
What type of business are you entering?*

Business Name*

Business Address*

Business Map Location*

In order to identify an accurate business location, please identify on the map via address search or pin drop



City of Grapevine Community Appearance Survey

windshield assessment of our community

Staff Name*

Date*

Quadrant*

Street Name*

Street Condition*

Street Striping Condition*



SUCCESS IS WHAT YOU MAKE IT!!!

- Build trusting relationships
- Identify integration business goals
- Propose business cases including ROIs
- Data integrity one feature class at time
- Utilize Esri's mobile platform



THANK YOU & HAPPY TRAILS QUESTIONS?



BCHATHAM@GRAPEVINETEXAS.GOV