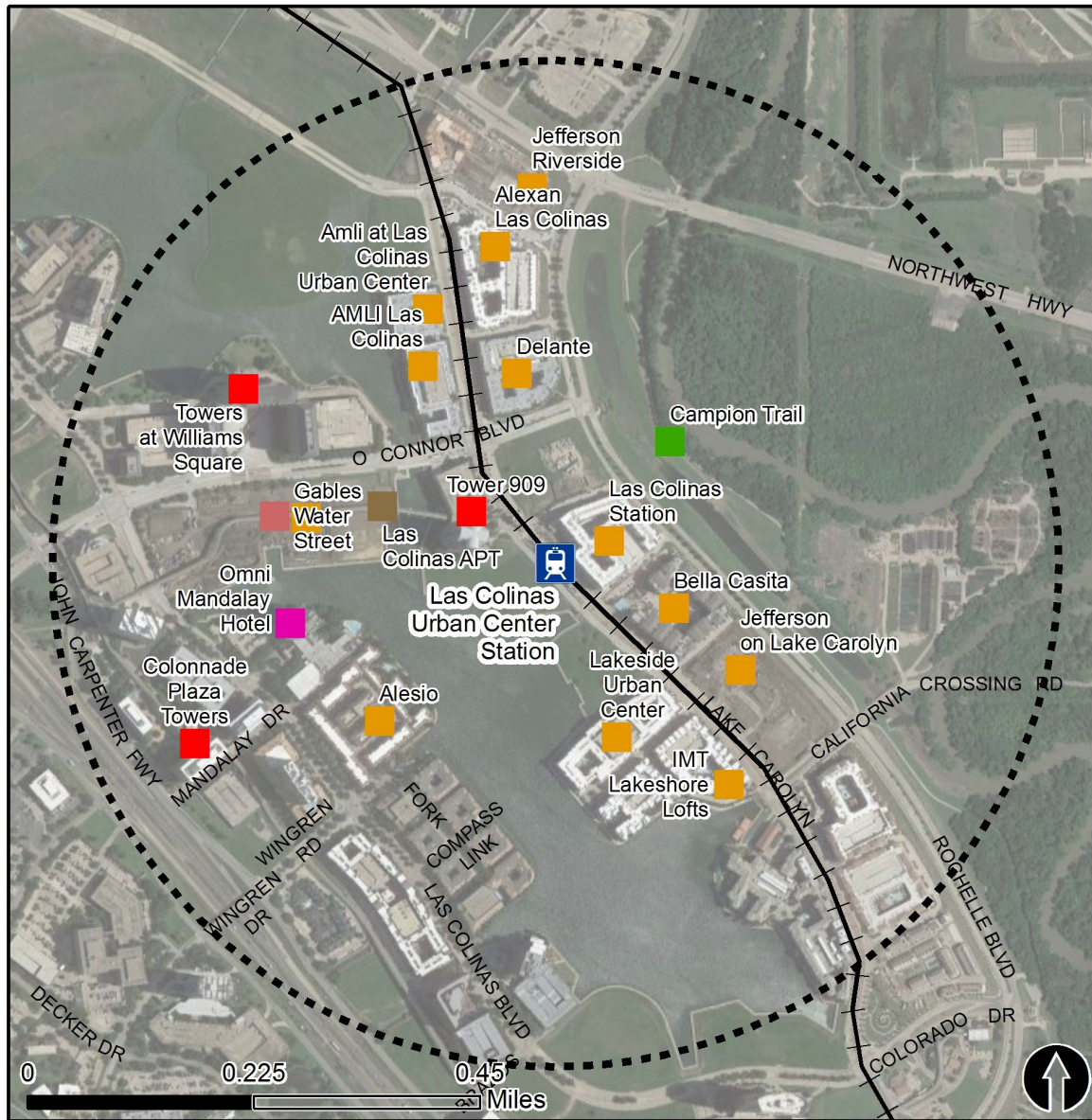


# Rail Station Fact Sheet – Las Colinas Urban Center Station



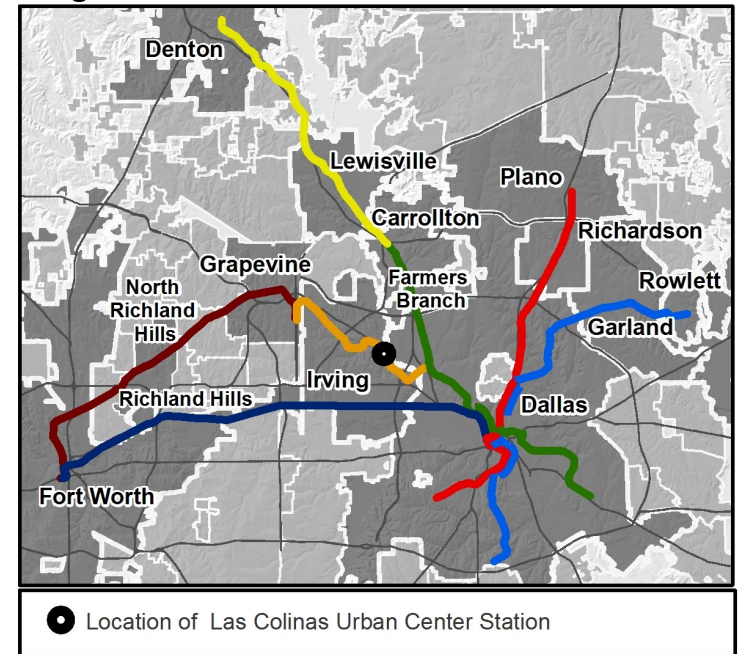
North Central Texas  
Council of Governments



## Station Overview

Las Colinas Urban Center Station is located on Lake Carolyn Parkway just south of O'Connor Boulevard at the Las Colinas Urban Center of Irving. The station opened in 2012 and is served by the DART Rail Orange Line.

## Regional Rail Transit Lines



● Location of Las Colinas Urban Center Station

0.5 Mile Station Buffer Rail Lines	Rail Stations	<b>Key Developments</b>				
		Transportation	Hotel	Multi-Family	Office	Recreation
				Retail		

# Rail Station Fact Sheet – Las Colinas Urban Center Station



North Central Texas  
Council of Governments

## Station Characteristics<sup>1</sup>

Address	890 Lake Carolyn Parkway
City	Irving
Agency	Dallas Area Rapid Transit
Rail Line(s)	Orange Line
Corridor	Northwest (NW)-Irving/DFW
Year Opened	2012
Park & Ride Spaces	0

## Ridership<sup>1</sup>

2015 Avg. Weekday	245
2015 Avg. Saturday	126
2015 Avg. Sunday	108

## 2014 On-Board Transit Survey: Access Mode to Station<sup>2</sup>

Bike	0.0%
Drive Alone	1.7%
Carpool	3.2%
Walk	62.1%
Drop Off	12.6%
Other	0.0%
Transit Transfer	20.4%

## Station Area Plans and Studies

Title	Las Colinas Urban Center Master Plan
Publisher	City of Irving and Las Colinas Association
Year	2013
Web Location	<a href="http://www.lascalinasassn.com/Docs/Temp/2013-03-22_Sasaki_Urban_Center_Report.pdf">http://www.lascalinasassn.com/Docs/Temp/2013-03-22_Sasaki_Urban_Center_Report.pdf</a>

## Station Area Characteristics (1/2 mile radius)

### Demographics<sup>3</sup>

Total Population	11,577
Population Density (pop/sq. mile)	969
Average Median Age	33
Average Median Income	\$75,219.63

### Housing<sup>3</sup>

Total Housing Units	6,942
Housing Density (units/sq. mile)	581
Percent Occupied	90%
Percent Owner-Occupied	14%
Percent Renter-Occupied	86%

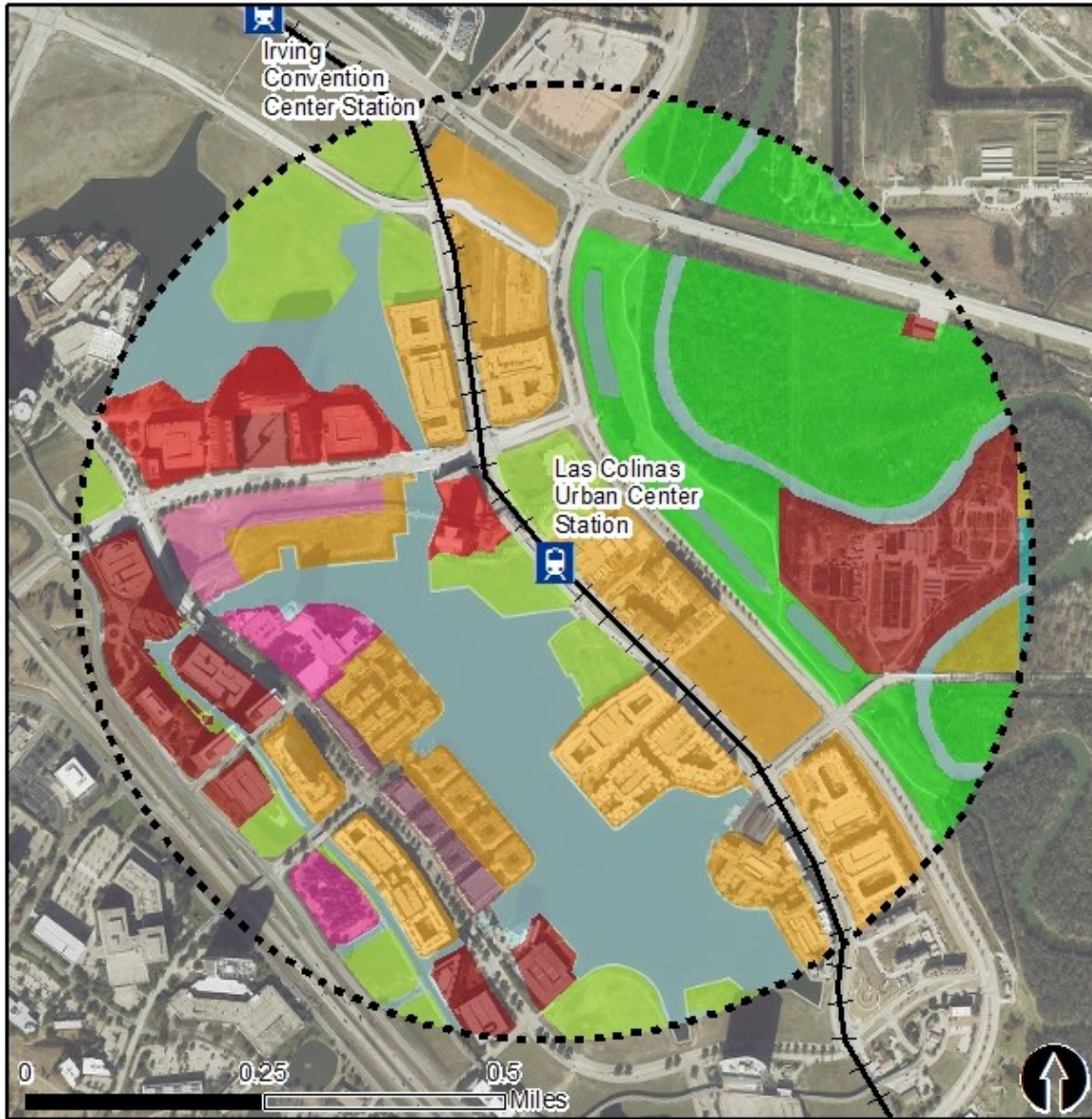
### Commute To Work<sup>3</sup>

Percent Automobile	91.1%
Percent Drive Alone	84.5%
Percent Carpool	6.6%
Percent Transit	0.7%
Percent Bike	0.0%
Percent Walk	1.6%
Percent Other	0.6%
Percent Work from Home	6.0%
Percent Zero-Vehicle Households	1.9%

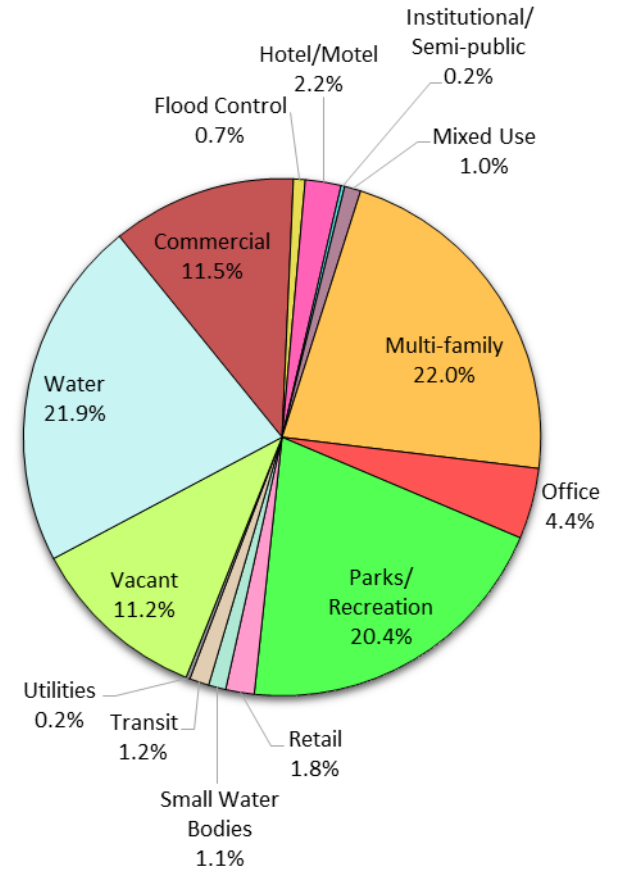
### Traffic Survey Zone 2017 Employment Forecast<sup>2</sup>

Total Jobs	37,269
Job Density (jobs/sq. mile)	9,909

# Land Use (2016) – Las Colinas Urban Center Station



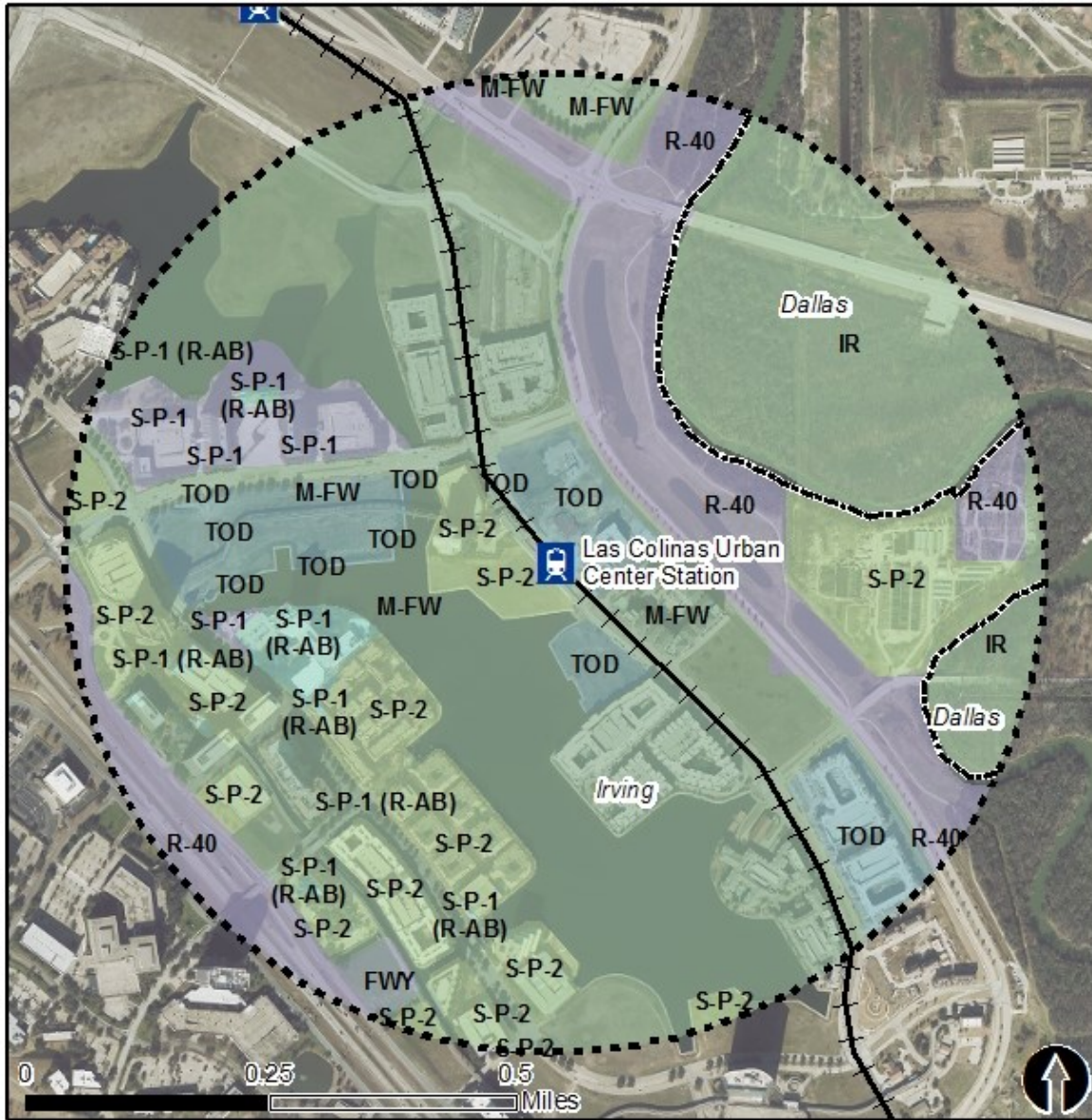
### Land Use Percentages



0.5 Mile  
Station Buffer

Rail Stations Rail Alignment

# Zoning (2016) – Las Colinas Urban Center Station



## Zoning Districts

- FWY – Freeway
  - M-FW – Freeway (retired)
  - R-40 – Single Family Residential
  - S-P-1 – Site Plan (Detailed)
  - S-P-2 – Site Plan (Generalized)
  - TOD – Transit-Oriented Development
- Dallas Zoning
- IR – Industrial Research

For more information on zoning, please visit the City of Irving Zoning website at:  
<http://cityofirving.org/733/Codes-and-Ordinances>  
 City of Dallas Zoning website at:  
<http://gis.dallascityhall.com/zoningweb>



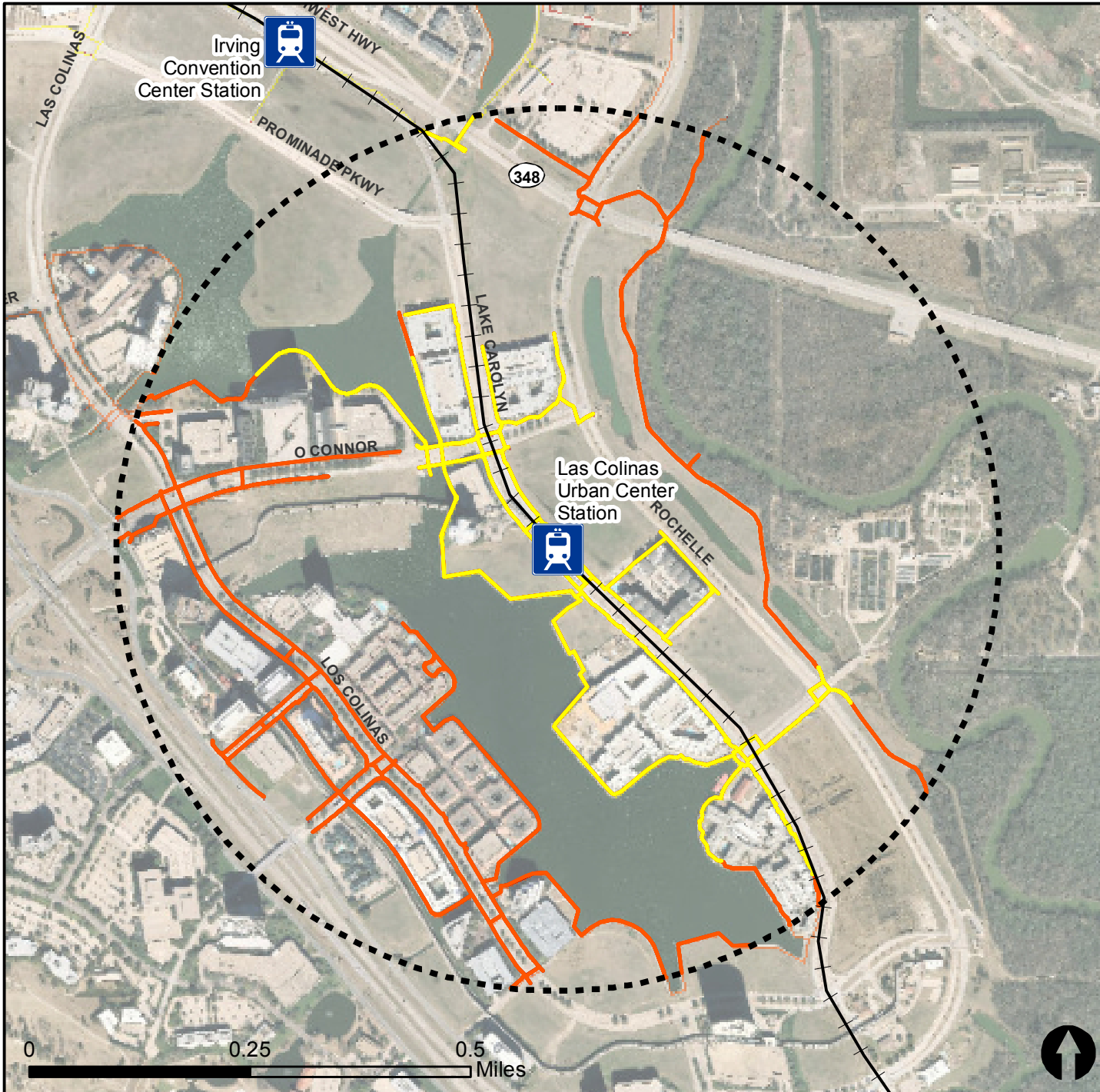
Rail Stations —+— Rail Lines

# Pedestrian Routes to Rail - Las Colinas Urban Center Station







Last Updated: February 2015



North Central Texas  
Council of Governments



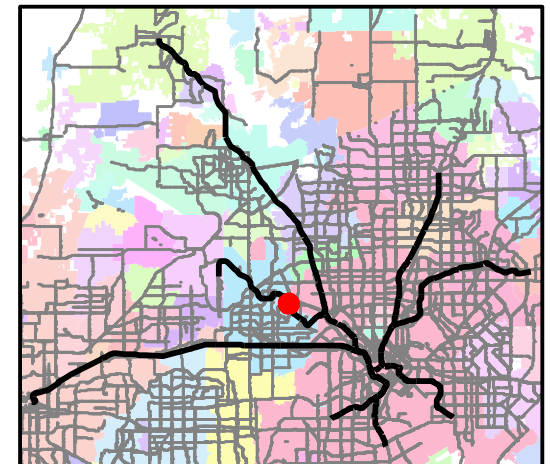
## Legend

-  Rail Stations
-  0.5 Mile Station Buffer
-  Railroads
-  Existing sidewalk facilities within a 0.5 mile walk distance
-  Existing sidewalk facilities greater than a 0.5 mile walk distance
-  Existing sidewalk facilities that are disconnected due to a gap in the network

## Project Overview

The Pedestrian Routes to Rail study identifies all existing pedestrian facilities within a half-mile radius of existing light rail and commuter rail stations in the Dallas-Fort Worth region based on 2014 data. ArcGIS Network Analyst tool was used to identify continuous facilities that are less than or greater than a half-mile actual walking distance to a station. The maps also reflect existing facilities that are disconnected due to gaps or other barriers not allowing a continuous pedestrian route to a station. The maps do not reflect the condition or ADA compliance of the existing infrastructure. More information on the Routes to Rail study and methodology is available at:

[nctcog.org/RoutesToRail](http://nctcog.org/RoutesToRail)

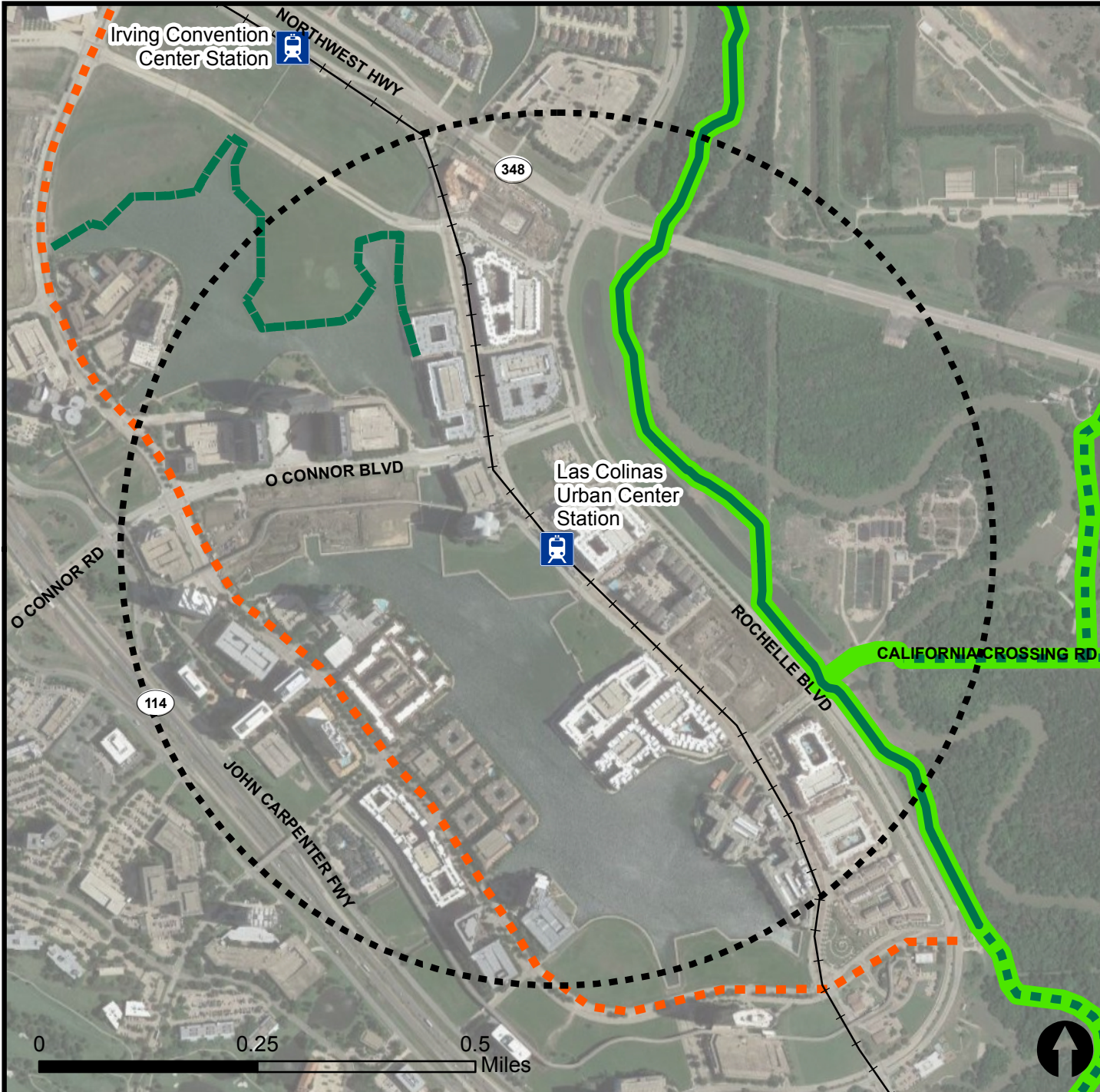


# Bicycle Routes to Rail - Las Colinas Urban Center Station

Last Updated: October 2016



North Central Texas  
Council of Governments



## Legend

- Rail Stations
- 0.5 Mile Station Buffer
- Rail Lines
- On-Street Bikeway, Existing
- On-Street Bikeway, Planned
- 2040 Veloweb
- Off-Street Path, Existing
- Off-Street Path, Planned

## Project Overview

The Bicycle Routes to Rail study identifies all existing and planned bikeways in proximity to existing or under-construction light rail and commuter rail stations in the Dallas / Fort Worth region based on 2016 data. The maps reflect off-street paths (trails) and streets designated by local adopted master plans for dedicated bikeways (e.g. bike lanes, cycle tracks) located on the street. In accordance with the Texas Transportation Code, bicyclists have a right to the road. As such, the map does not reflect other roadways around the station that may have signed bike routes or by state law may be used by bicyclists. More information about the Routes to Rail study and methodology is available at: [nctcog.org/RoutesToRail](http://nctcog.org/RoutesToRail)

