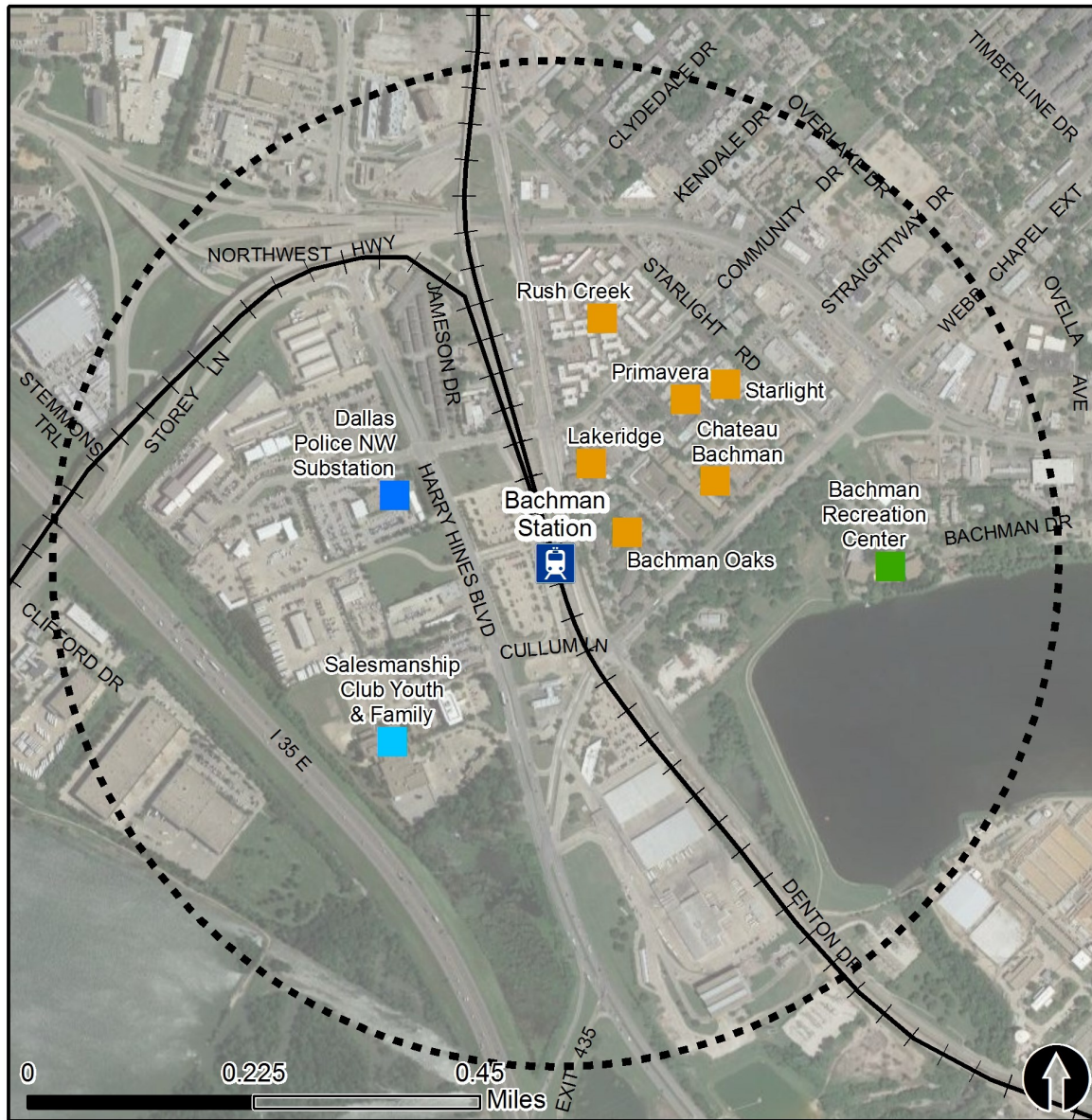


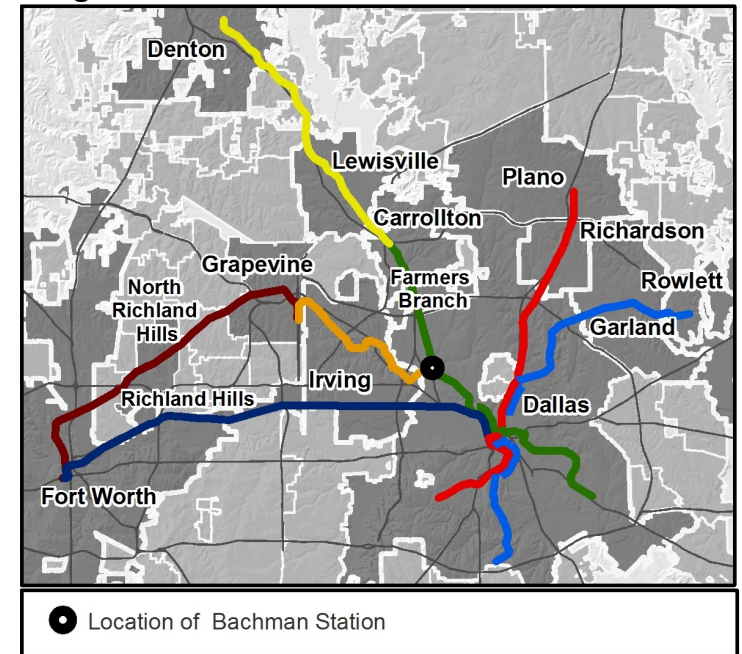
Rail Station Fact Sheet – Bachman Station



Station Overview

Bachman Station is located south of Northwest Highway on Denton Drive in Dallas. The station is near Bachman Lake Trail and Dallas Love Field Airport. The station opened in 2010 and is served by the DART Rail Green and Orange Lines.

Regional Rail Transit Lines



0.5 Mile
Station Buffer



Rail Stations



Rail Lines

Key Developments



Government



Institutional



Multi-Family



Recreation

Rail Station Fact Sheet – Bachman Station



Station Characteristics¹

| | |
|--------------------|---------------------------|
| Address | 9739 Denton Drive |
| City | Dallas |
| Agency | Dallas Area Rapid Transit |
| Rail Line(s) | Green Line, Orange Line |
| Corridor | Northwest (NW) |
| Year Opened | 2010 |
| Park & Ride Spaces | 458 |

Ridership¹

| | |
|--------------------|-------|
| 2015 Avg. Weekday | 2,109 |
| 2015 Avg. Saturday | 1,232 |
| 2015 Avg. Sunday | 886 |

2014 On-Board Transit Survey: Access Mode to Station²

| | |
|------------------|-------|
| Bike | 1.1% |
| Drive Alone | 4.9% |
| Carpool | 1.5% |
| Walk | 31.4% |
| Drop Off | 15.6% |
| Other | 0.7% |
| Transit Transfer | 44.7% |

Station Area Plans and Studies

| | |
|--------------|--|
| Title | |
| Publisher | |
| Year | |
| Web Location | |

Station Area Characteristics (1/2 mile radius)

Demographics³

| | |
|-----------------------------------|-------------|
| Total Population | 15,215 |
| Population Density (pop/sq. mile) | 852 |
| Average Median Age | 31 |
| Average Median Income | \$34,890.13 |

Housing³

| | |
|----------------------------------|-------|
| Total Housing Units | 5,306 |
| Housing Density (units/sq. mile) | 297 |
| Percent Occupied | 86% |
| Percent Owner-Occupied | 22% |
| Percent Renter-Occupied | 78% |

Commute To Work³

| | |
|---------------------------------|-------|
| Percent Automobile | 86.4% |
| Percent Drive Alone | 60.1% |
| Percent Carpool | 26.2% |
| Percent Transit | 9.4% |
| Percent Bike | 0.7% |
| Percent Walk | 0.8% |
| Percent Other | 2.0% |
| Percent Work from Home | 0.6% |
| Percent Zero-Vehicle Households | 14.4% |

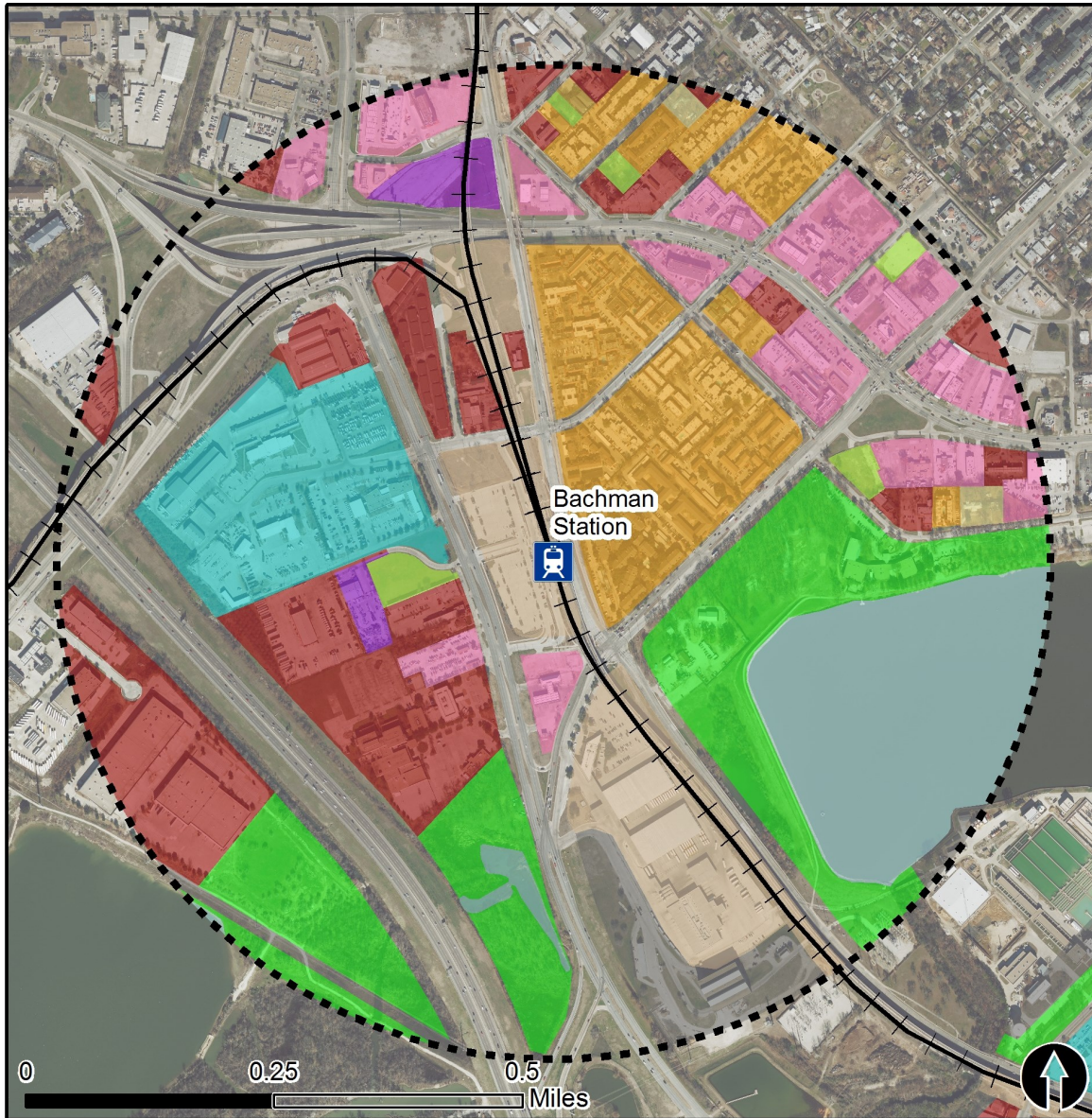
Traffic Survey Zone 2017 Employment Forecast²

| | |
|-----------------------------|--------|
| Total Jobs | 14,464 |
| Job Density (jobs/sq. mile) | 4,723 |

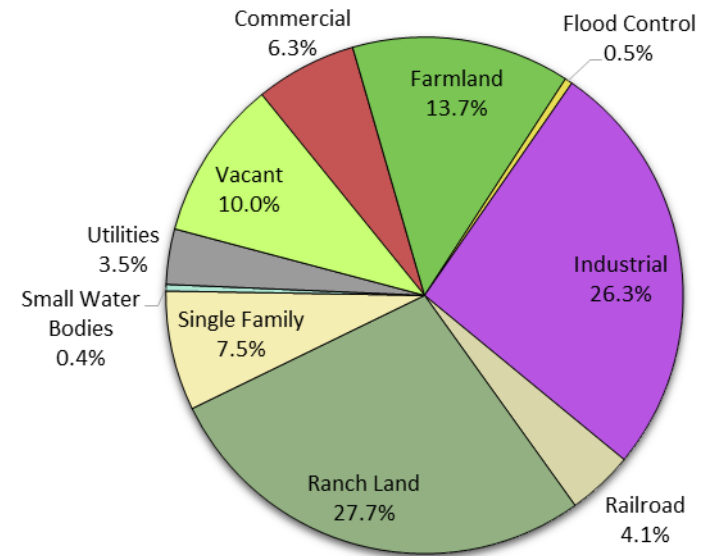
Land Use (2016) – Bachman Station



North Central Texas
Council of Governments



Land Use Percentages

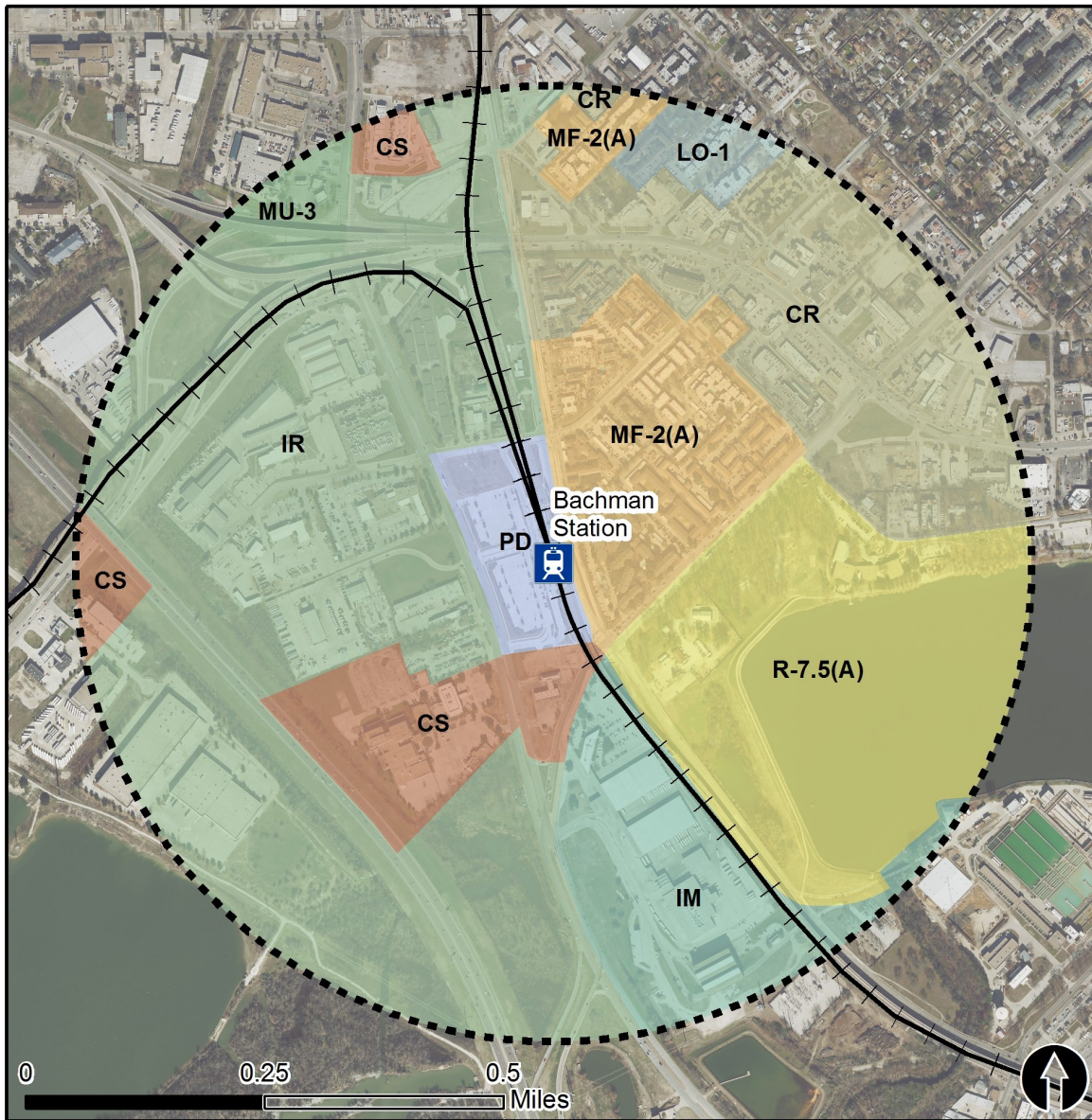


0.5 Mile
Station Buffer



Rail Stations —+— Rail Lines

Zoning (2016) – Bachman Station



Zoning Districts

- CS – Commercial Service
- CR – Community Retail
- IM – Industrial Manufacturing
- IR – Industrial Research
- MF-2(A) – Multifamily
- MU-3 – Mixed-Use
- PD – Planned Development
- R-7.5(A) – Single Family

For more information on zoning, please visit the City of Dallas Zoning website at:

<http://gis.dallascityhall.com/zoningweb/>



0.5 Mile
Station Buffer



Rail Stations



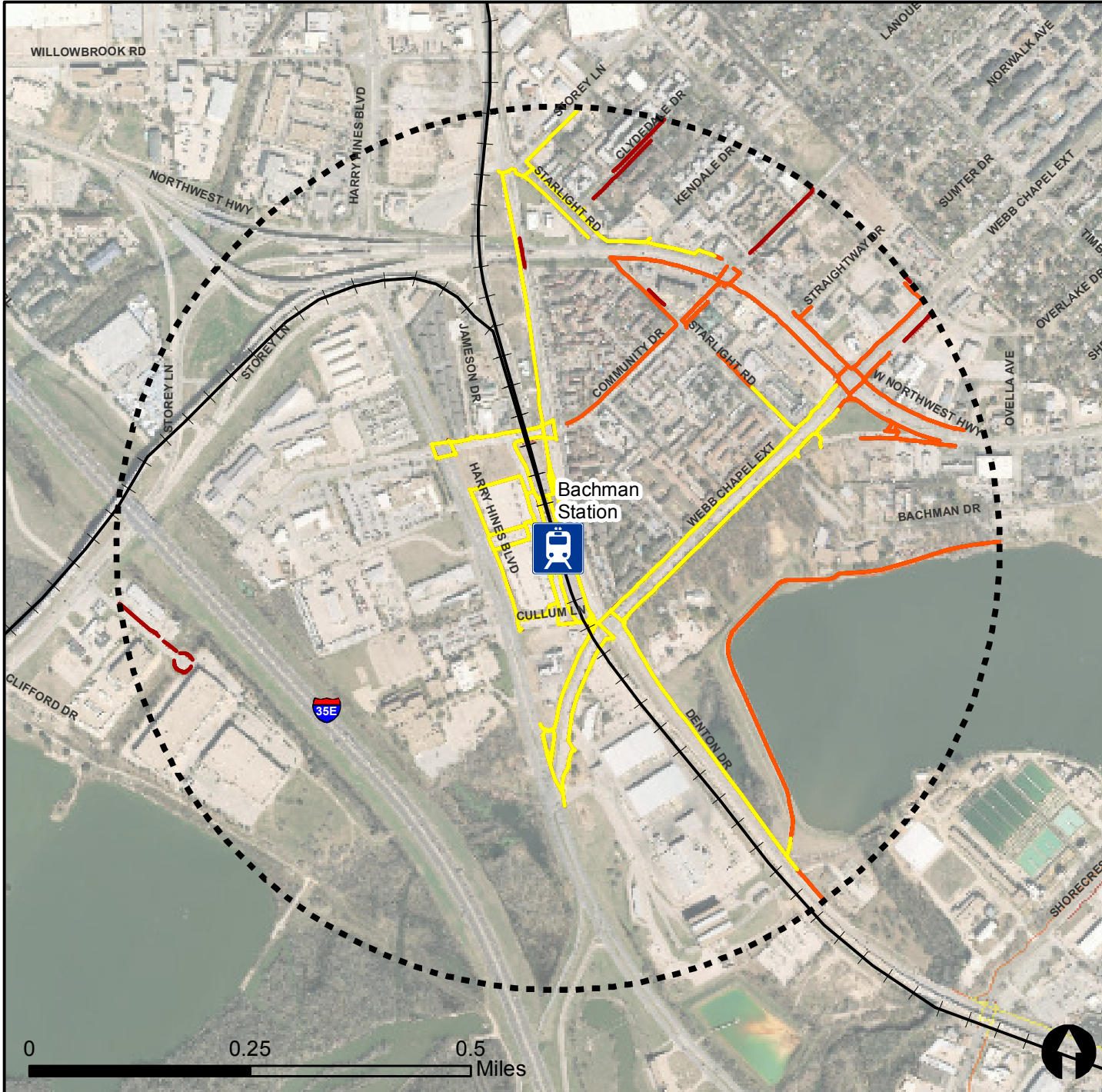
Rail Alignment

Pedestrian Routes to Rail - Bachman Station

Last Updated: February 2015



North Central Texas
Council of Governments



Legend



Rail Stations



0.5 Mile
Station Buffer

Railroads

Existing sidewalk facilities within a 0.5 mile walk distance

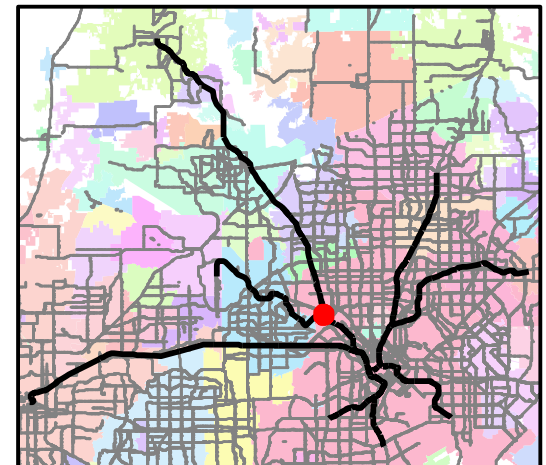
Existing sidewalk facilities greater than a 0.5 mile walk distance

Existing sidewalk facilities that are disconnected due to a gap in the network

Project Overview

The Pedestrian Routes to Rail study identifies all existing pedestrian facilities within a half-mile radius of existing light rail and commuter rail stations in the Dallas-Fort Worth region based on 2014 data. ArcGIS Network Analyst tool was used to identify continuous facilities that are less than or greater than a half-mile actual walking distance to a station. The maps also reflect existing facilities that are disconnected due to gaps or other barriers not allowing a continuous pedestrian route to a station. The maps do not reflect the condition or ADA compliance of the existing infrastructure. More information on the Routes to Rail study and methodology is available at:

nctcog.org/RoutesToRail

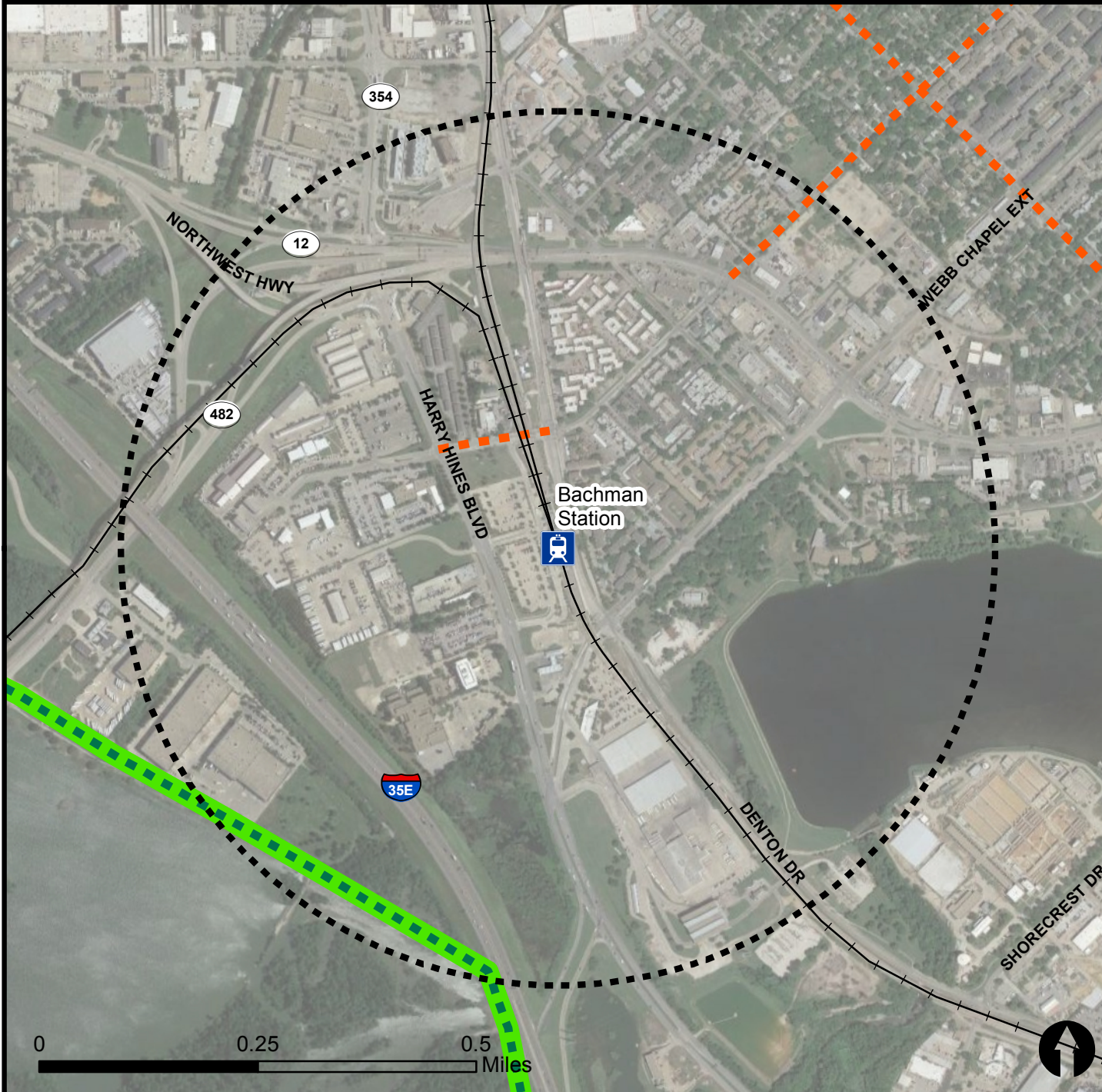


Bicycle Routes to Rail - Bachman Station

Last Updated: October 2016



North Central Texas
Council of Governments



Legend



Rail Stations



0.5 Mile
Station Buffer

Rail Lines

On-Street Bikeway, Existing

On-Street Bikeway, Planned

2040 Veloweb

Off-Street Path, Existing

Off-Street Path, Planned

Project Overview

The Bicycle Routes to Rail study identifies all existing and planned bikeways in proximity to existing or under-construction light rail and commuter rail stations in the Dallas / Fort Worth region based on 2016 data. The maps reflect off-street paths (trails) and streets designated by local adopted master plans for dedicated bikeways (e.g. bike lanes, cycle tracks) located on the street. In accordance with the Texas Transportation Code, bicyclists have a right to the road. As such, the map does not reflect other roadways around the station that may have signed bike routes or by state law may be used by bicyclists. More information about the Routes to Rail study and methodology is available at:

nctcog.org/RoutesToRail

