

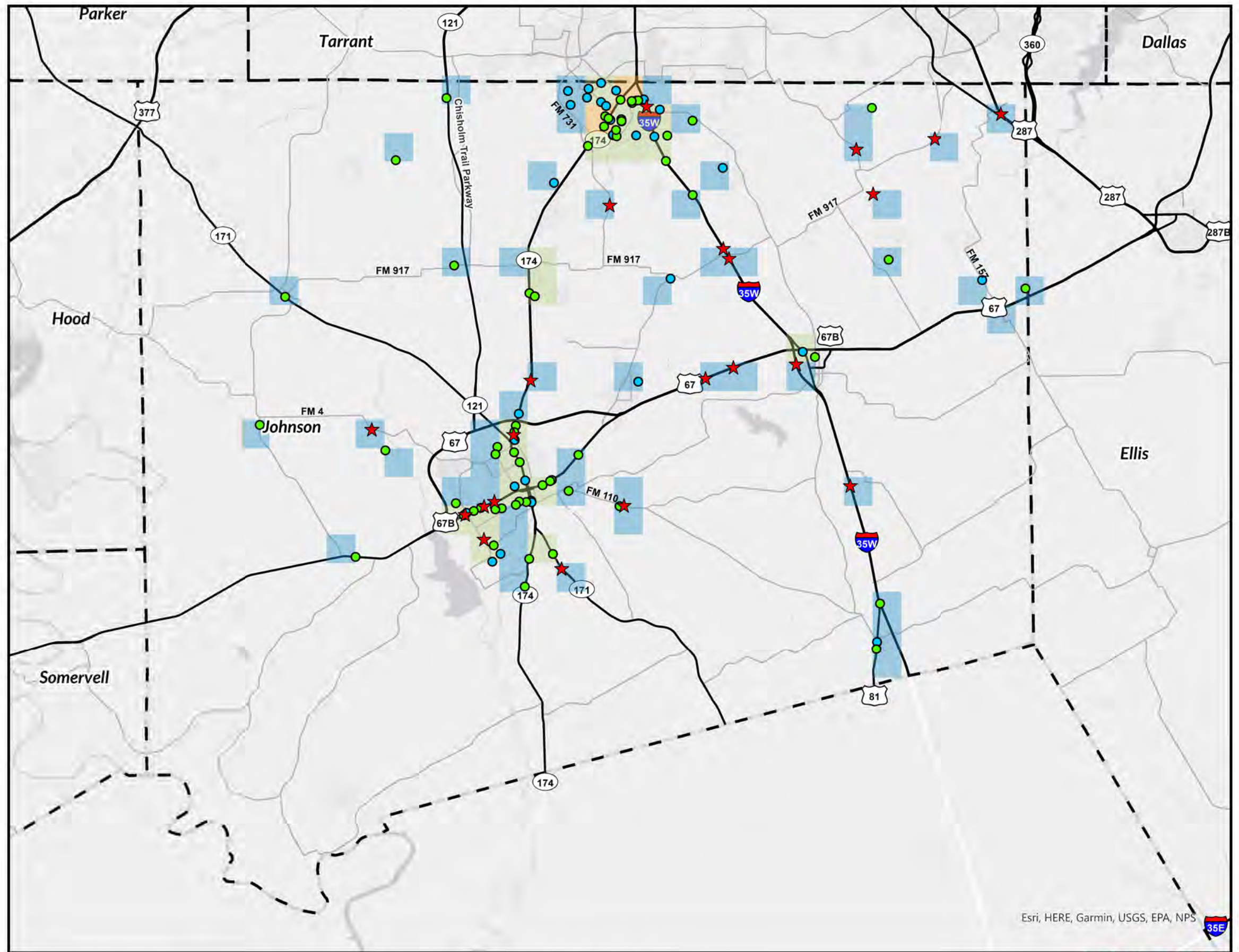
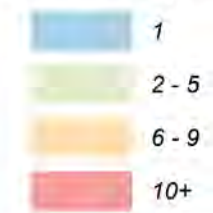
# Johnson County

Bicycle and Pedestrian Crashes per Square Mile (2018 - 2022)

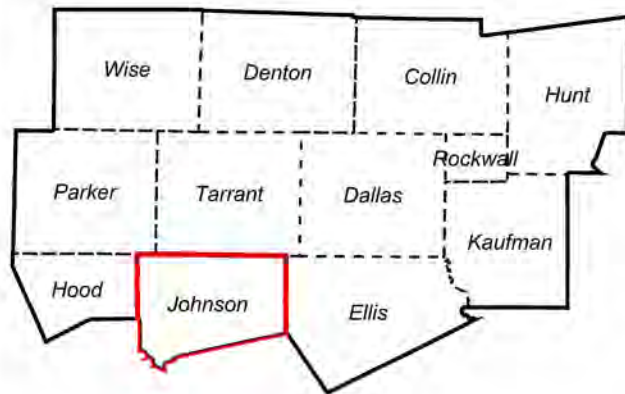
## Legend

- ★ Fatal Bicycle or Pedestrian Crash (21)
- Non-Fatal Bicycle Crash (35)
- Non-Fatal Pedestrian Crash (63)
- Highway
- Major Arterial Road
- Passenger Rail Line
- - - Counties

## Crashes per Square Mile



## NCTCOG 12-County Metropolitan Planning Area



Esri, HERE, Garmin, USGS, EPA, NPS

Last Updated: 8/9/2023

- 1.) Source: TxDOT's Crash Records Information System: 2018-2022 data is current as of April 2023. All TxDOT disclaimers apply.
- 2.) Data displayed contains reportable crashes with latitude and longitude information. Additional crashes may have occurred.
- 3.) This data is composed of TxDOT "Reportable Crashes" that occurs or originates on a traffic way, results in injury to or death of any person, or damage to the property of any person to the apparent extent of \$1,000.

