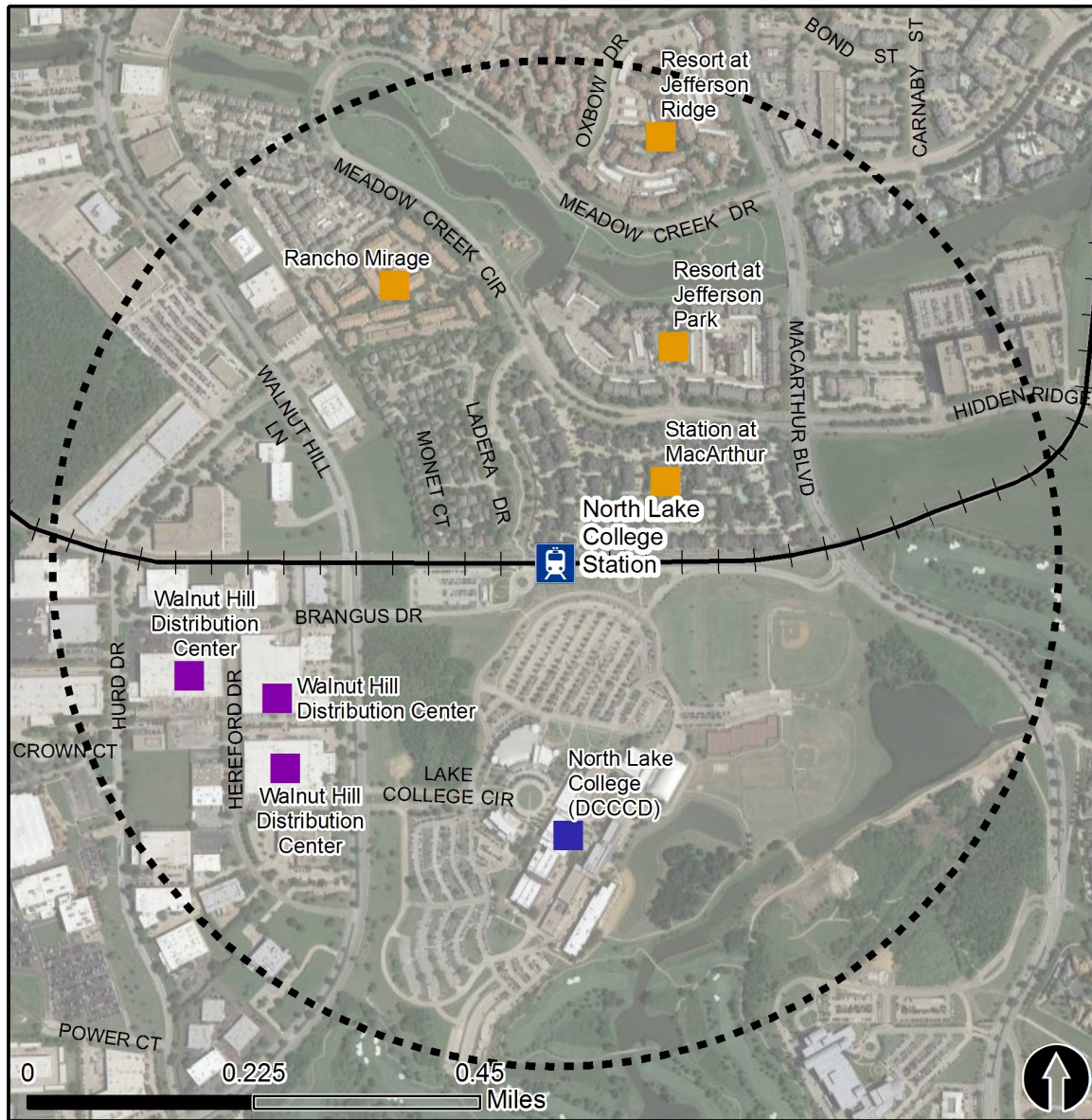


Rail Station Fact Sheet – North Lake College Station



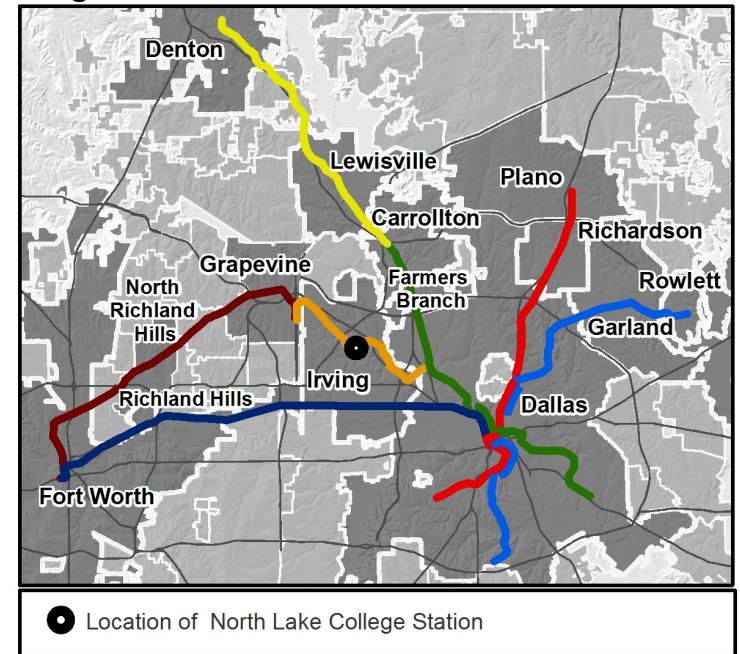
North Central Texas
Council of Governments



Station Overview

North Lake College Station is located east of Walnut Hill Lane and west of MacArthur Boulevard on the North Lake College campus in Irving. The station opened in 2012 and is served by the DART Rail Orange Line.

Regional Rail Transit Lines



0.5 Mile
Station Buffer



Rail Stations



Rail Lines

Key Developments



Education



Industrial



Multi-Family

Rail Station Fact Sheet – North Lake College Station



North Central Texas
Council of Governments

Station Characteristics¹

Address	1770 W. Walnut Hill Lane
City	Irving
Agency	Dallas Area Rapid Transit
Rail Line(s)	Orange Line
Corridor	Northwest (NW)-Irving/DFW
Year Opened	2012
Park & Ride Spaces	269

Ridership¹

2015 Avg. Weekday	725
2015 Avg. Saturday	368
2015 Avg. Sunday	276

2014 On-Board Transit Survey: Access Mode to Station²

Bike	1.9%
Drive Alone	13.6%
Carpool	0.7%
Walk	45.8%
Drop Off	4.2%
Other	0.3%
Transit Transfer	33.6%

Station Area Plans and Studies

Title	
Publisher	
Year	
Web Location	

Station Area Characteristics (1/2 mile radius)

Demographics³

Total Population	9,080
Population Density (pop/sq. mile)	568
Average Median Age	32
Average Median Income	\$70,491.88

Housing³

Total Housing Units	4,429
Housing Density (units/sq. mile)	277
Percent Occupied	88%
Percent Owner-Occupied	13%
Percent Renter-Occupied	87%

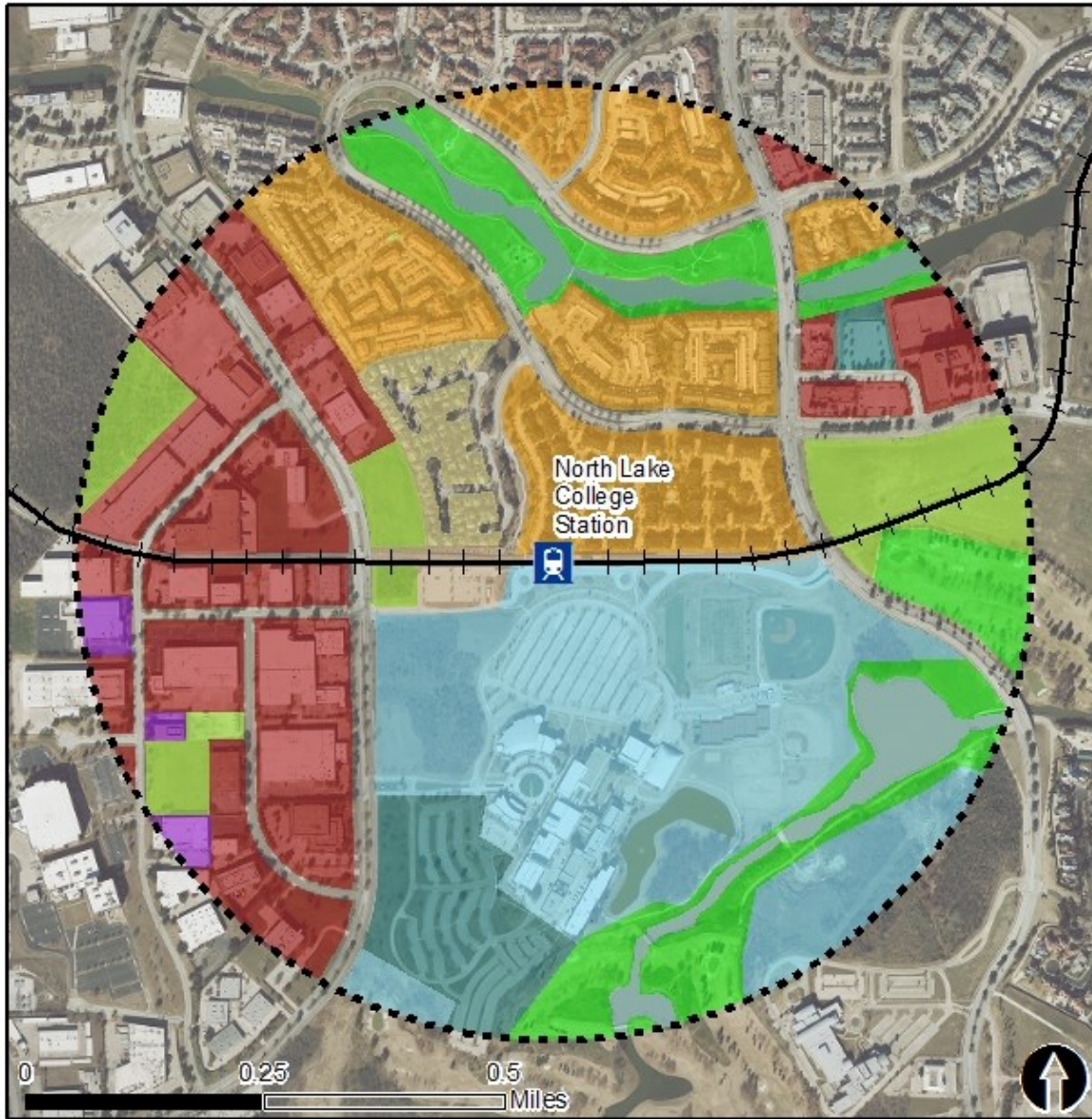
Commute To Work³

Percent Automobile	88.8%
Percent Drive Alone	81.3%
Percent Carpool	7.5%
Percent Transit	1.4%
Percent Bike	0.0%
Percent Walk	4.6%
Percent Other	1.8%
Percent Work from Home	3.3%
Percent Zero-Vehicle Households	6.1%

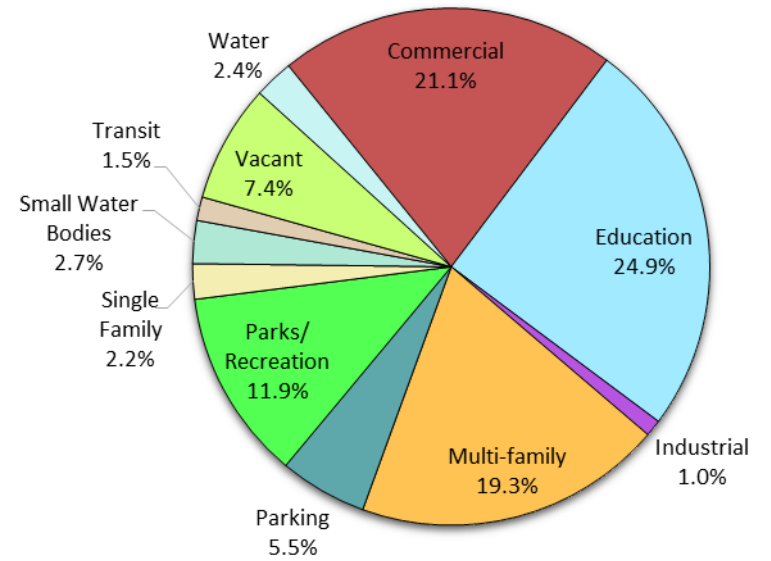
Traffic Survey Zone 2017 Employment Forecast²

Total Jobs	25,900
Job Density (jobs/sq. mile)	7,195

Land Use (2016) – North Lake College Station



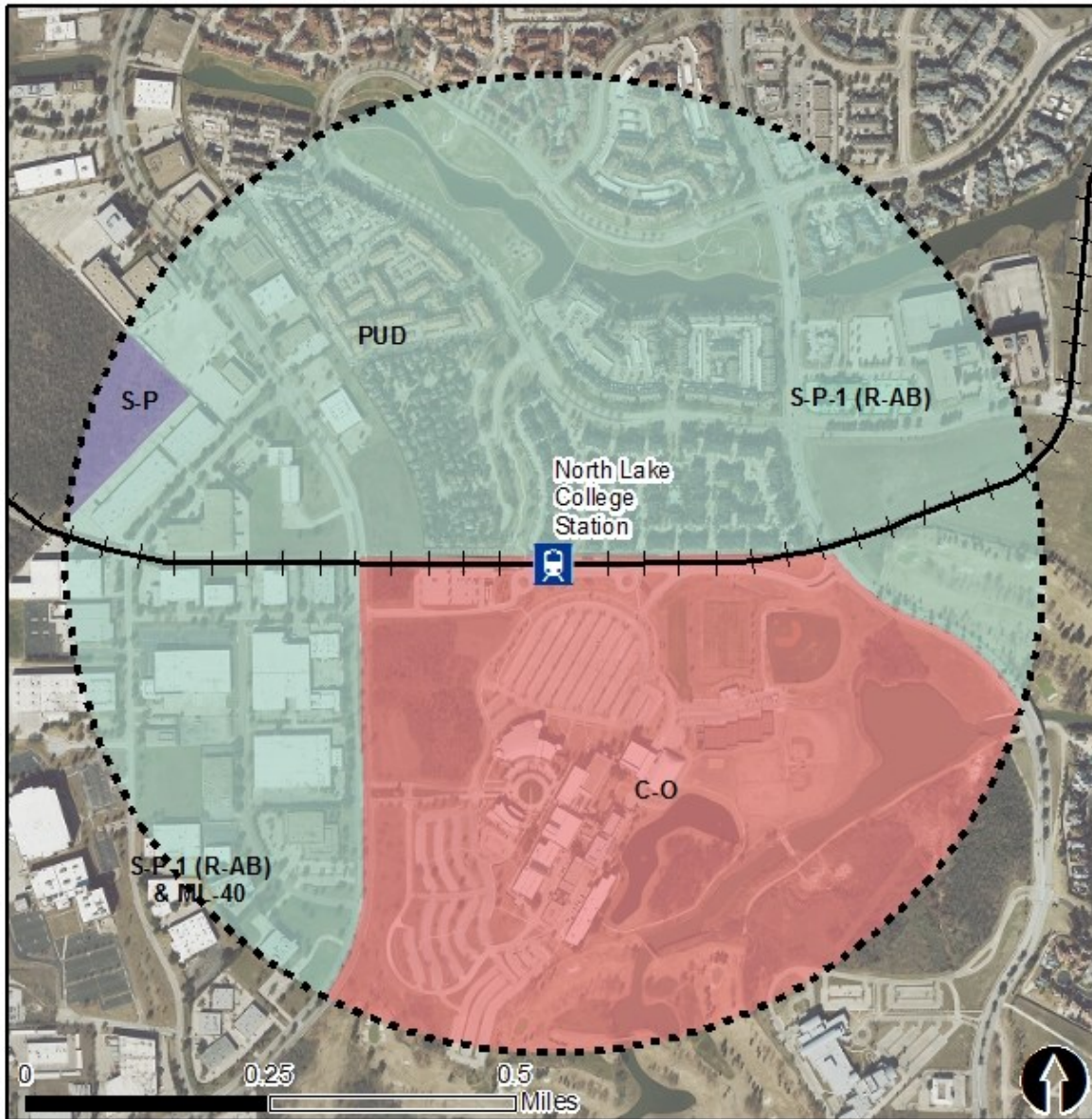
Land Use Percentages



0.5 Mile
Station Buffer

Rail Stations Rail Alignment

Zoning (2016) – North Lake College Station



Zoning Districts

- C-O – Commercial Office
- PUD – Planned Unit Development
- S-P-1 – Site Plan (Detailed)
- S-P – Site Plan (Airport)
- ML-40 – Light Industrial

For more information on zoning, please visit the City of Irving Zoning website at:

<http://cityofirving.org/733/Codes-and-Ordinances>



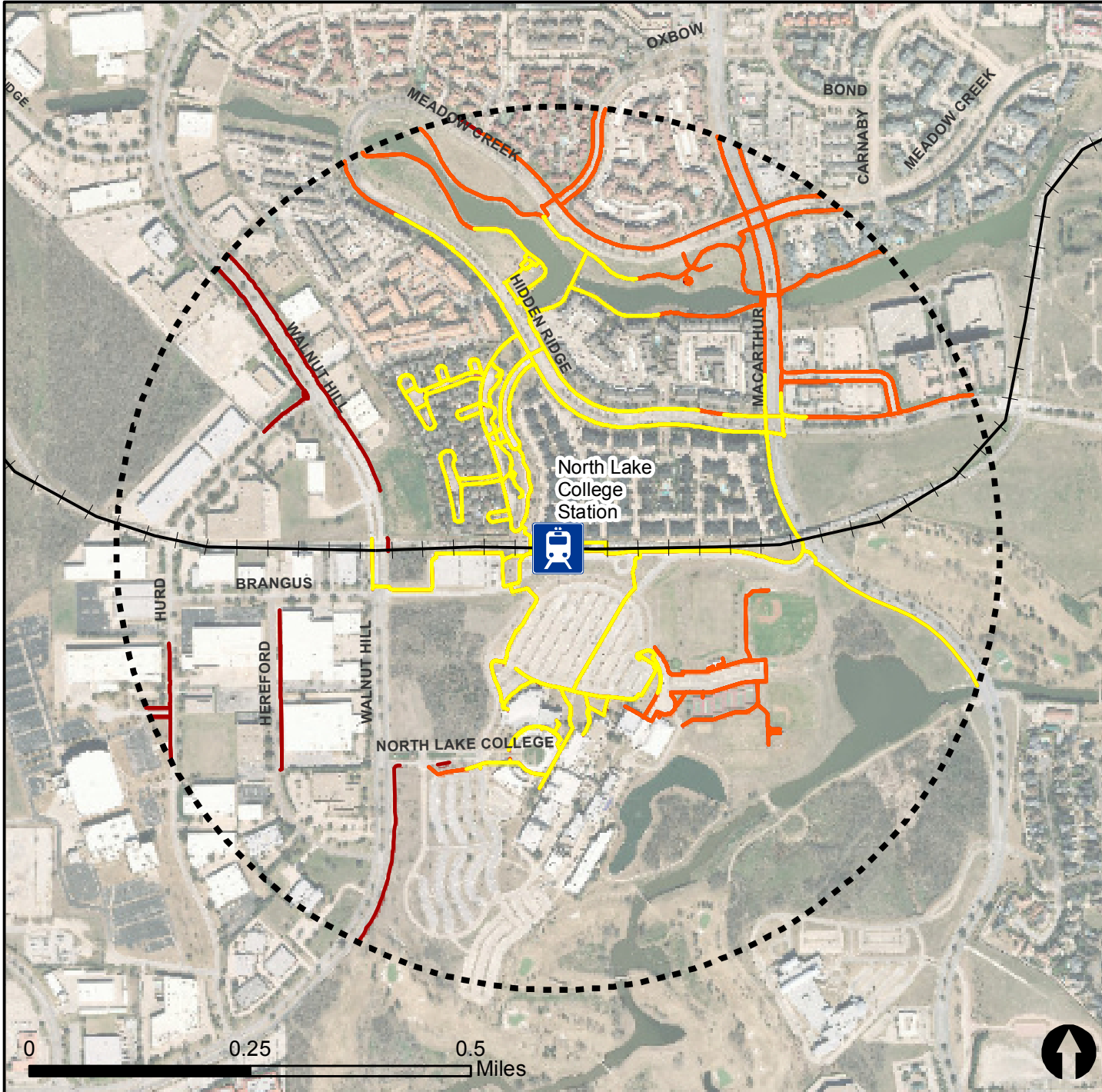
Rail Stations —+— Rail Lines

Pedestrian Routes to Rail - North Lake College Station

Last Updated: February 2015



North Central Texas
Council of Governments



Legend



Rail Stations



0.5 Mile
Station Buffer

Railroads



Existing sidewalk facilities within a
0.5 mile walk distance



Existing sidewalk facilities greater than
a 0.5 mile walk distance

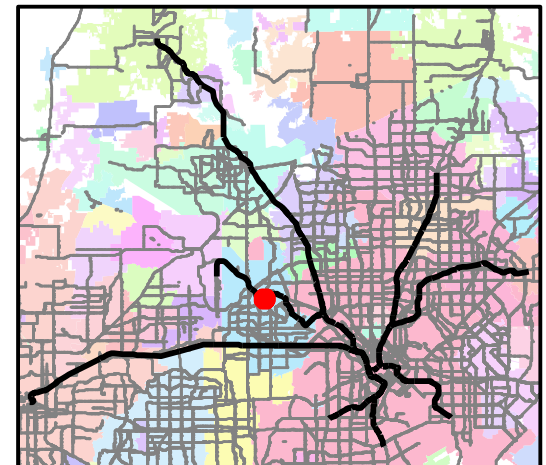


Existing sidewalk facilities that are
disconnected due to a gap in the
network

Project Overview

The Pedestrian Routes to Rail study identifies all existing pedestrian facilities within a half-mile radius of existing light rail and commuter rail stations in the Dallas-Fort Worth region based on 2014 data. ArcGIS Network Analyst tool was used to identify continuous facilities that are less than or greater than a half-mile actual walking distance to a station. The maps also reflect existing facilities that are disconnected due to gaps or other barriers not allowing a continuous pedestrian route to a station. The maps do not reflect the condition or ADA compliance of the existing infrastructure. More information on the Routes to Rail study and methodology is available at:

nctcog.org/RoutesToRail



Bicycle Routes to Rail - North Lake College Station

Last Updated: October 2016



North Central Texas
Council of Governments



Legend



Rail Stations



0.5 Mile
Station Buffer



Rail Lines



On-Street Bikeway, Existing



On-Street Bikeway, Planned



2040 Veloweb



Off-Street Path, Existing



Off-Street Path, Planned

Project Overview

The Bicycle Routes to Rail study identifies all existing and planned bikeways in proximity to existing or under-construction light rail and commuter rail stations in the Dallas / Fort Worth region based on 2016 data. The maps reflect off-street paths (trails) and streets designated by local adopted master plans for dedicated bikeways (e.g. bike lanes, cycle tracks) located on the street. In accordance with the Texas Transportation Code, bicyclists have a right to the road. As such, the map does not reflect other roadways around the station that may have signed bike routes or by state law may be used by bicyclists. More information about the Routes to Rail study and methodology is available at:

nctcog.org/RoutesToRail

