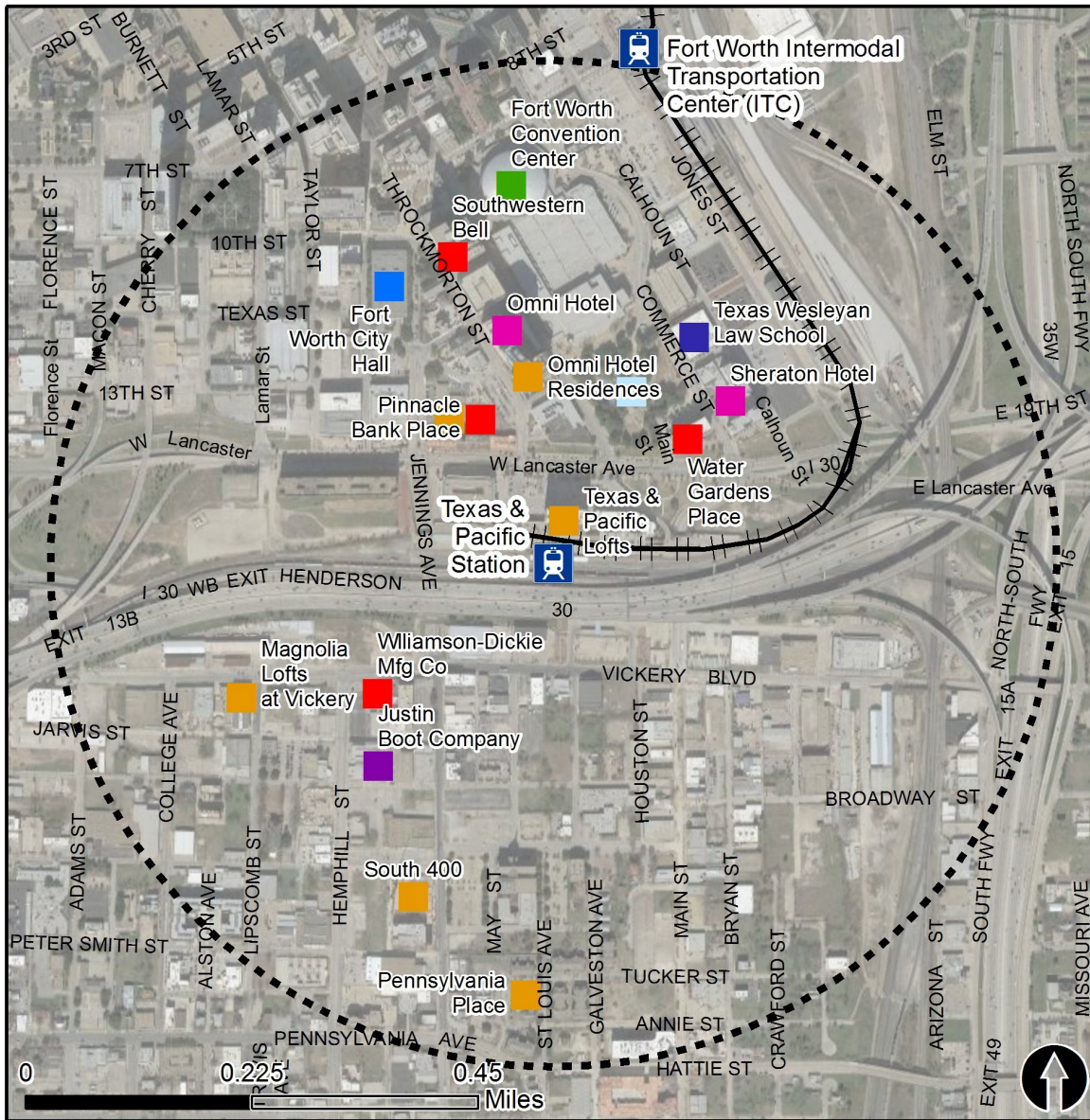


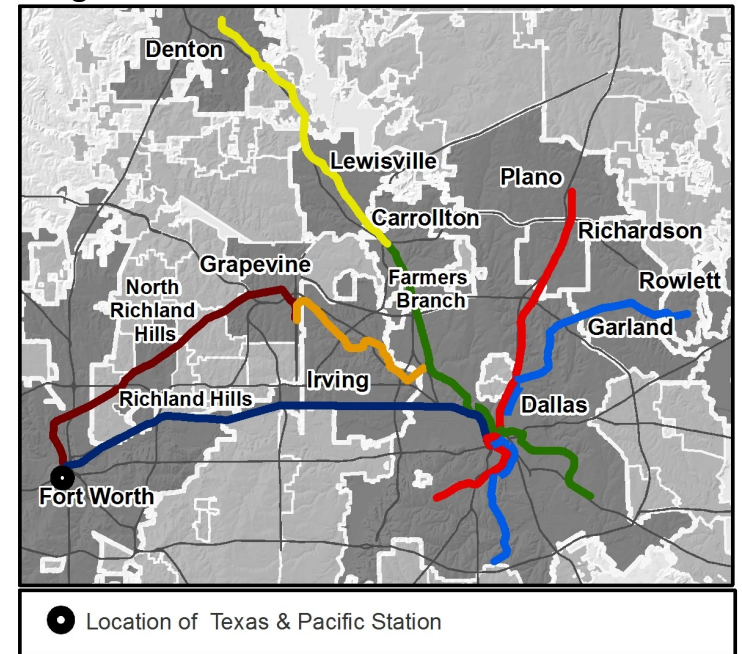
Rail Station Fact Sheet – Texas & Pacific Station



Station Overview

Texas & Pacific Station is located between Lancaster Avenue and Vickery Boulevard by the landmark Texas & Pacific building in downtown Fort Worth. The station opened in 2001 and is currently the west terminus for the Trinity Railway Express (TRE) commuter rail.

Regional Rail Transit Lines



0.5 Mile Station Buffer Rail Lines	Key Developments		
	Cultural Education	Government Hotel	Industrial Multi-Family

Rail Station Fact Sheet – Texas & Pacific Station



North Central Texas
Council of Governments

Station Characteristics¹

Address	1600 Throckmorton Street
City	Fort Worth
Agency	Trinity Railway Express
Rail Line(s)	TRE
Corridor	Trinity Railway Express
Year Opened	2001
Park & Ride Spaces	0

Ridership¹

2015 Avg. Weekday	620
2015 Avg. Saturday	330
2015 Avg. Sunday	N/A

2014 On-Board Transit Survey: Access Mode to Station²

Bike	2.2%
Drive Alone	44.8%
Carpool	3.8%
Walk	19.3%
Drop Off	19.6%
Other	0.0%
Transit Transfer	10.3%

Station Area Plans and Studies

Title	South Main Urban Village Master Plan
Publisher	City of Fort Worth
Year	2007
Web Location	http://fortworthtexas.gov/planninganddevelopment/urbanvillages/default.aspx?id=12524

Station Area Characteristics (1/2 mile radius)

Demographics³

Total Population	9,741
Population Density (pop/sq. mile)	2,670
Average Median Age	44
Average Median Income	\$28,974.33

Housing³

Total Housing Units	4,375
Housing Density (units/sq. mile)	1,199
Percent Occupied	80%
Percent Owner-Occupied	20%
Percent Renter-Occupied	80%

Commute To Work³

Percent Automobile	72.6%
Percent Drive Alone	62.0%
Percent Carpool	10.6%
Percent Transit	4.7%
Percent Bike	1.2%
Percent Walk	11.9%
Percent Other	2.7%
Percent Work from Home	7.0%
Percent Zero-Vehicle Households	20.6%

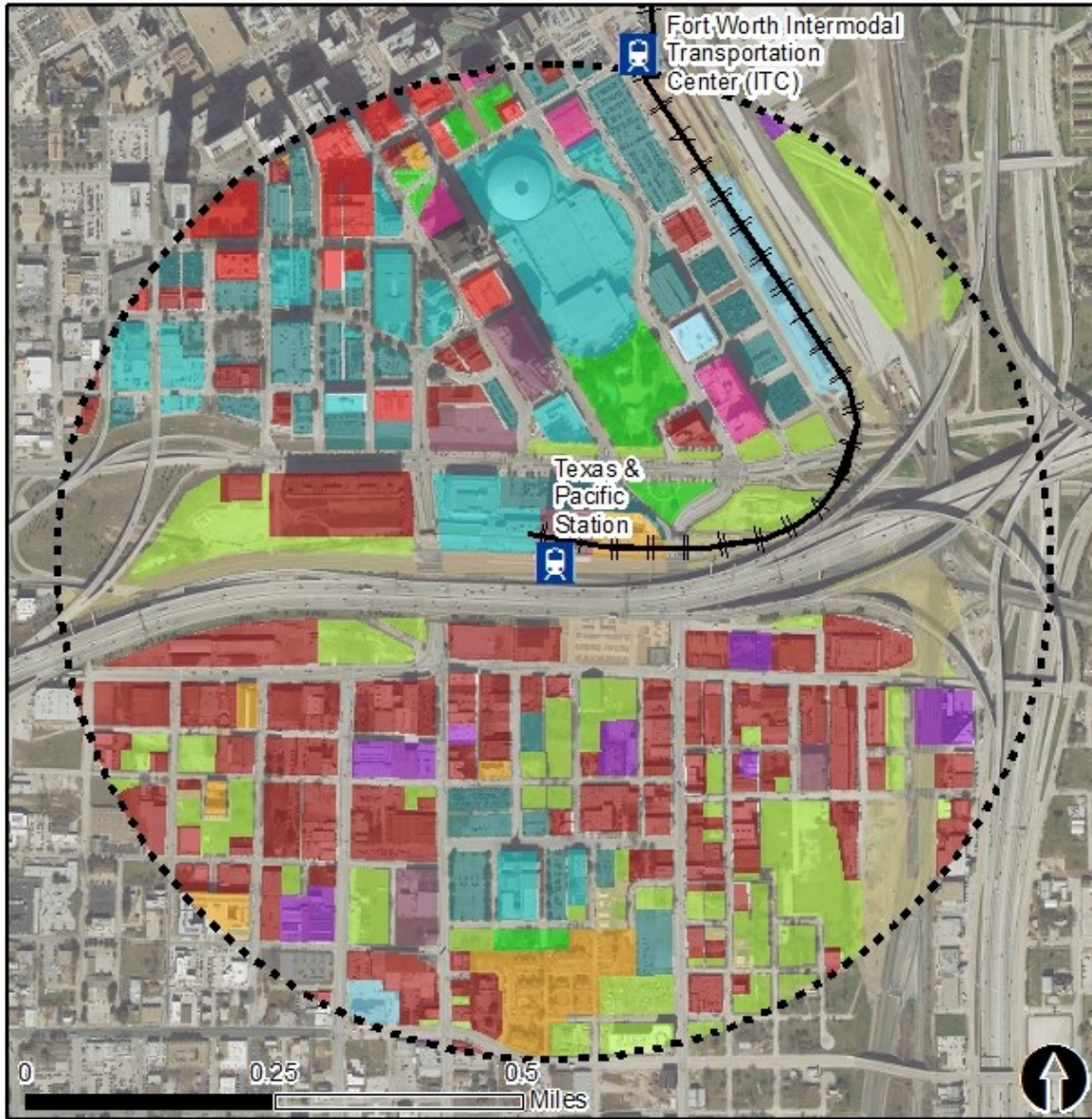
Traffic Survey Zone 2017 Employment Forecast²

Total Jobs	44,581
Job Density (jobs/sq. mile)	26,039

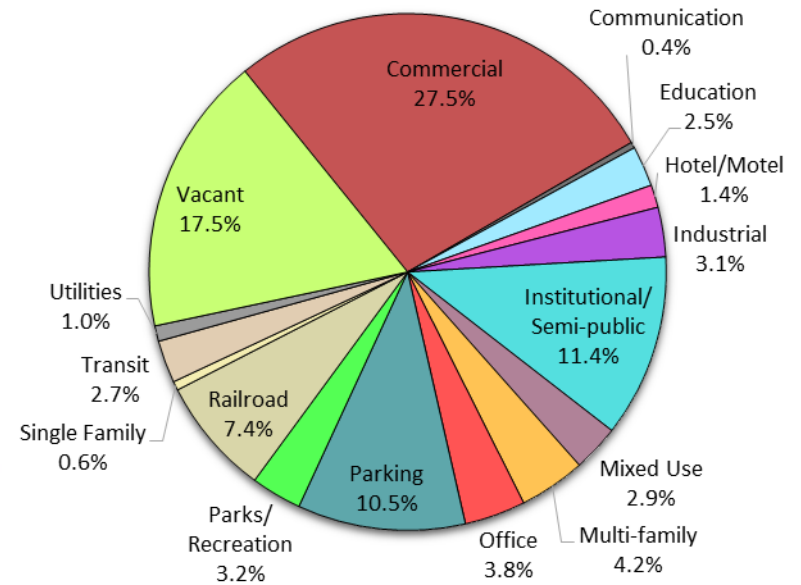
Rail Station Fact Sheet – Texas & Pacific Station



North Central Texas
Council of Governments



Land Use Percentages



0.5 Mile
Station Buffer

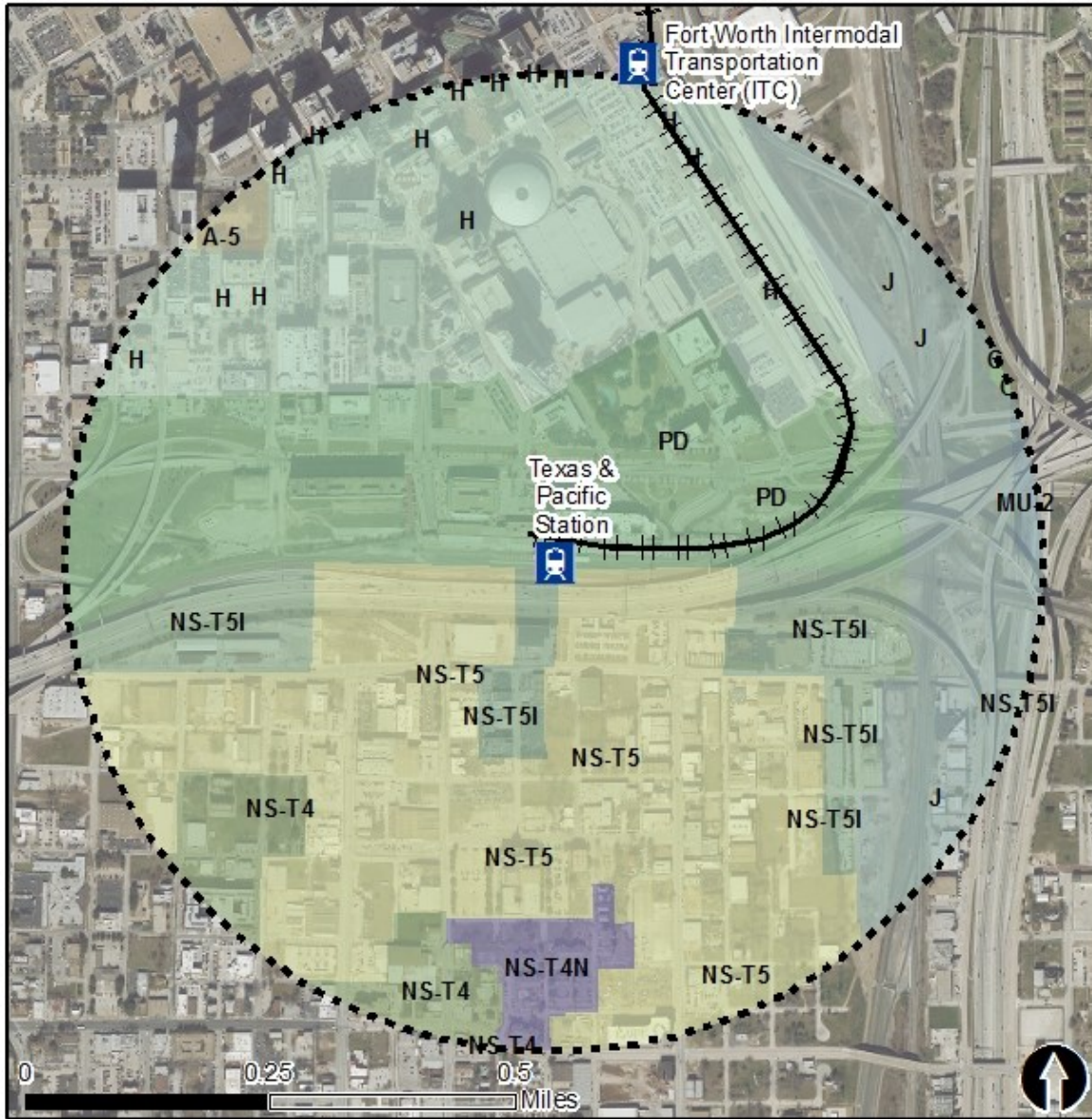


Rail Stations



Rail Lines

Rail Station Fact Sheet – Texas & Pacific Station



Zoning Districts

- A-5 – One Family
- H – Central Business District
- J – Medium Industrial
- K – Heavy Industrial
- NS-T4 – Near Southside, General Urban
- NS-T4N – Near Southside, General Urban, Neighborhood
- NS-T5 – Near Southside, Urban Center, Institutional/Industrial
- NS-T5 – Near Southside, Urban Center
- PD – Planned Development

For more information on zoning, please visit the City of Fort Worth Zoning website at:

<http://fortworthtexas.gov/zoning/>



0.5 Mile
Station Buffer



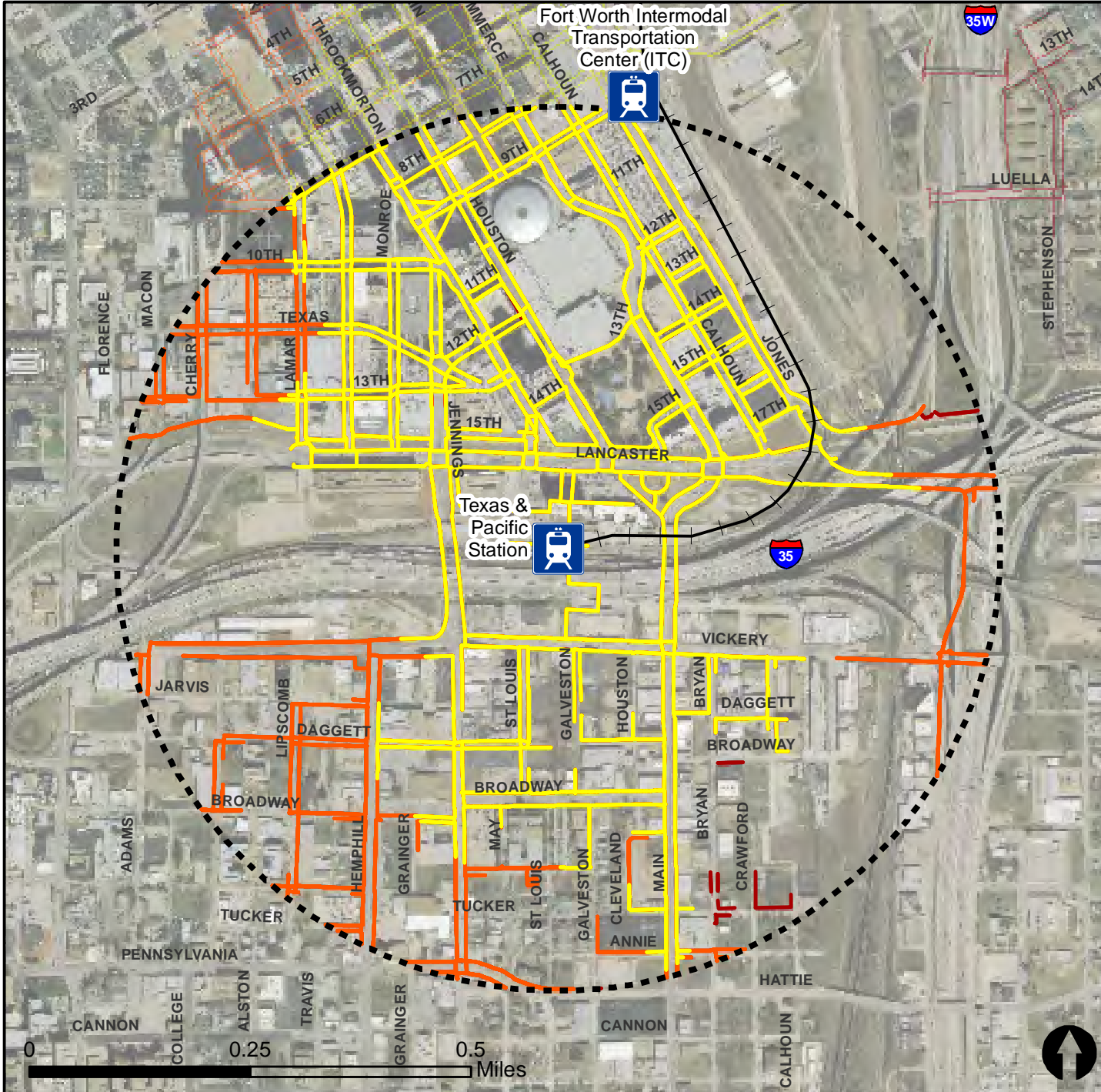
Rail Stations





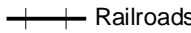



Rail Lines

Pedestrian Routes to Rail - Texas & Pacific Station

Last Updated: February 2015

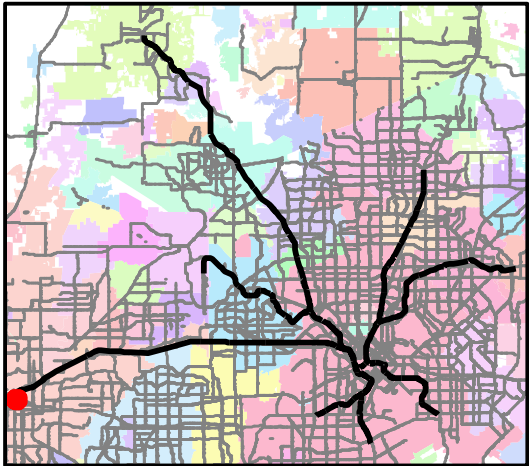


Legend

-  Rail Stations
-  0.5 Mile Station Buffer
-  Railroads
-  Existing sidewalk facilities within a 0.5 mile walk distance
-  Existing sidewalk facilities greater than a 0.5 mile walk distance
-  Existing sidewalk facilities that are disconnected due to a gap in the network

Project Overview

The Pedestrian Routes to Rail study identifies all existing pedestrian facilities within a half-mile radius of existing light rail and commuter rail stations in the Dallas-Fort Worth region based on 2014 data. ArcGIS Network Analyst tool was used to identify continuous facilities that are less than or greater than a half-mile actual walking distance to a station. The maps also reflect existing facilities that are disconnected due to gaps or other barriers not allowing a continuous pedestrian route to a station. The maps do not reflect the condition or ADA compliance of the existing infrastructure. More information on the Routes to Rail study and methodology is available at: nctcog.org/RoutesToRail



Bicycle Routes to Rail - Texas & Pacific Station

Last Updated: October 2016



North Central Texas
Council of Governments



Legend

-  Rail Stations
-  0.5 Mile Station Buffer
-  Rail Lines
-  On-Street Bikeway, Existing
-  On-Street Bikeway, Planned
-  2040 Veloweb
-  Off-Street Path, Existing
-  Off-Street Path, Planned

Project Overview

The Bicycle Routes to Rail study identifies all existing and planned bikeways in proximity to existing or under-construction light rail and commuter rail stations in the Dallas / Fort Worth region based on 2016 data. The maps reflect off-street paths (trails) and streets designated by local adopted master plans for dedicated bikeways (e.g. bike lanes, cycle tracks) located on the street. In accordance with the Texas Transportation Code, bicyclists have a right to the road. As such, the map does not reflect other roadways around the station that may have signed bike routes or by state law may be used by bicyclists. More information about the Routes to Rail study and methodology is available at: nctcog.org/RoutesToRail

