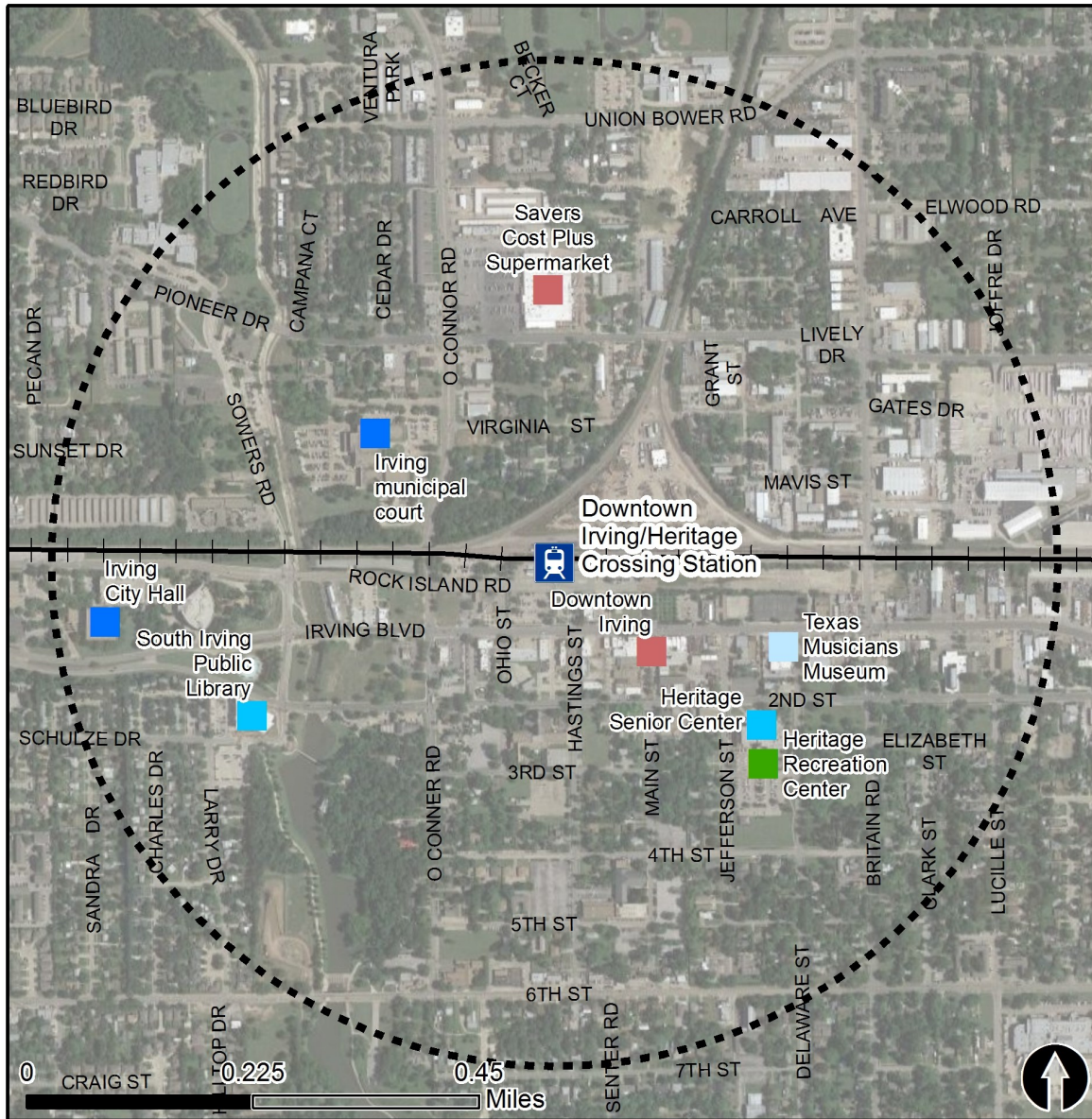


# Rail Station Fact Sheet – Downtown Irving/Heritage Crossing Station



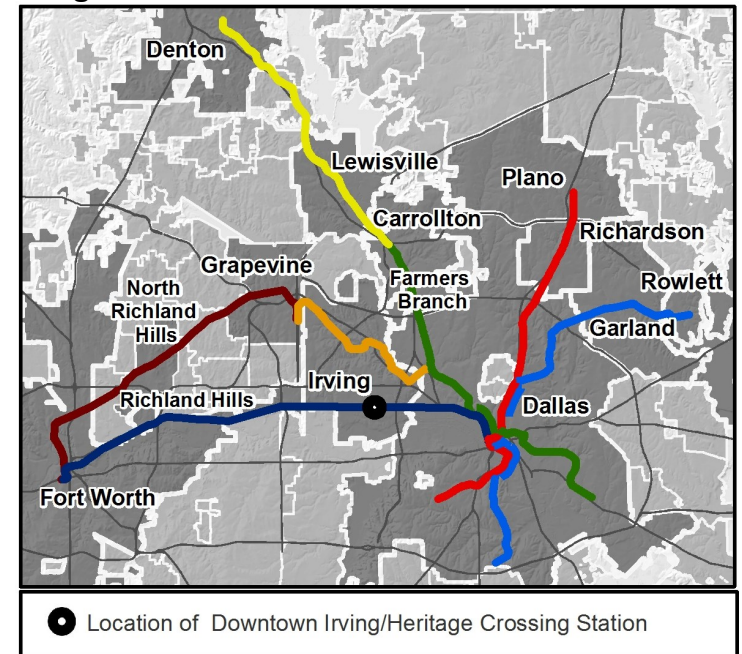
North Central Texas  
Council of Governments



## Station Overview

Downtown Irving/Heritage Crossing Station is located on Rock Island Road east of O’Conner Boulevard in Irving. The station opened in 1996, and is served by the Trinity Railway Express (TRE) commuter rail.

## Regional Rail Transit Lines



0.5 Mile  
Station Buffer

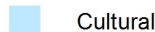


Rail Stations

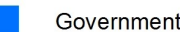


Rail Lines

## Key Developments



Cultural



Government



Institutional



Recreation



Retail

# Rail Station Fact Sheet – Downtown Irving/Heritage Crossing Station



North Central Texas  
Council of Governments

## Station Characteristics<sup>1</sup>

Address	115 Rock Island Road
City	Irving
Agency	Trinity Railway Express
Rail Line(s)	TRE
Corridor	Trinity Railway Express
Year Opened	1996
Park & Ride Spaces	406

## Ridership<sup>1</sup>

2015 Avg. Weekday	790
2015 Avg. Saturday	530
2015 Avg. Sunday	N/A

## 2014 On-Board Transit Survey: Access Mode to Station<sup>2</sup>

Bike	1.5%
Drive Alone	17.3%
Carpool	5.6%
Walk	24.8%
Drop Off	29.2%
Other	0.0%
Transit Transfer	21.7%

## Station Area Plans and Studies

Title	
Publisher	
Year	
Web Location	

## Station Area Characteristics (1/2 mile radius)

### Demographics<sup>3</sup>

Total Population	14,229
Population Density (pop/sq. mile)	4,679
Average Median Age	33
Average Median Income	\$39,634.00

### Housing<sup>3</sup>

Total Housing Units	4,995
Housing Density (units/sq. mile)	1,643
Percent Occupied	89%
Percent Owner-Occupied	44%
Percent Renter-Occupied	56%

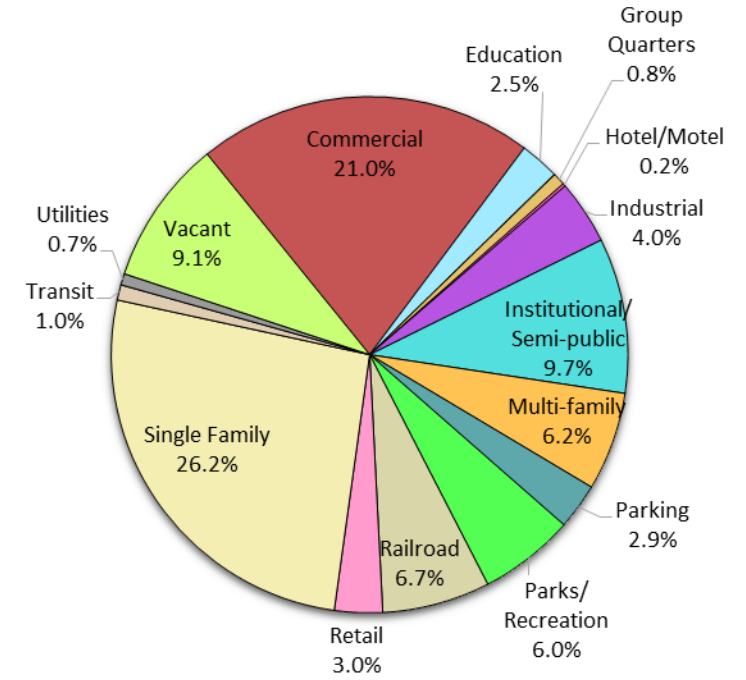
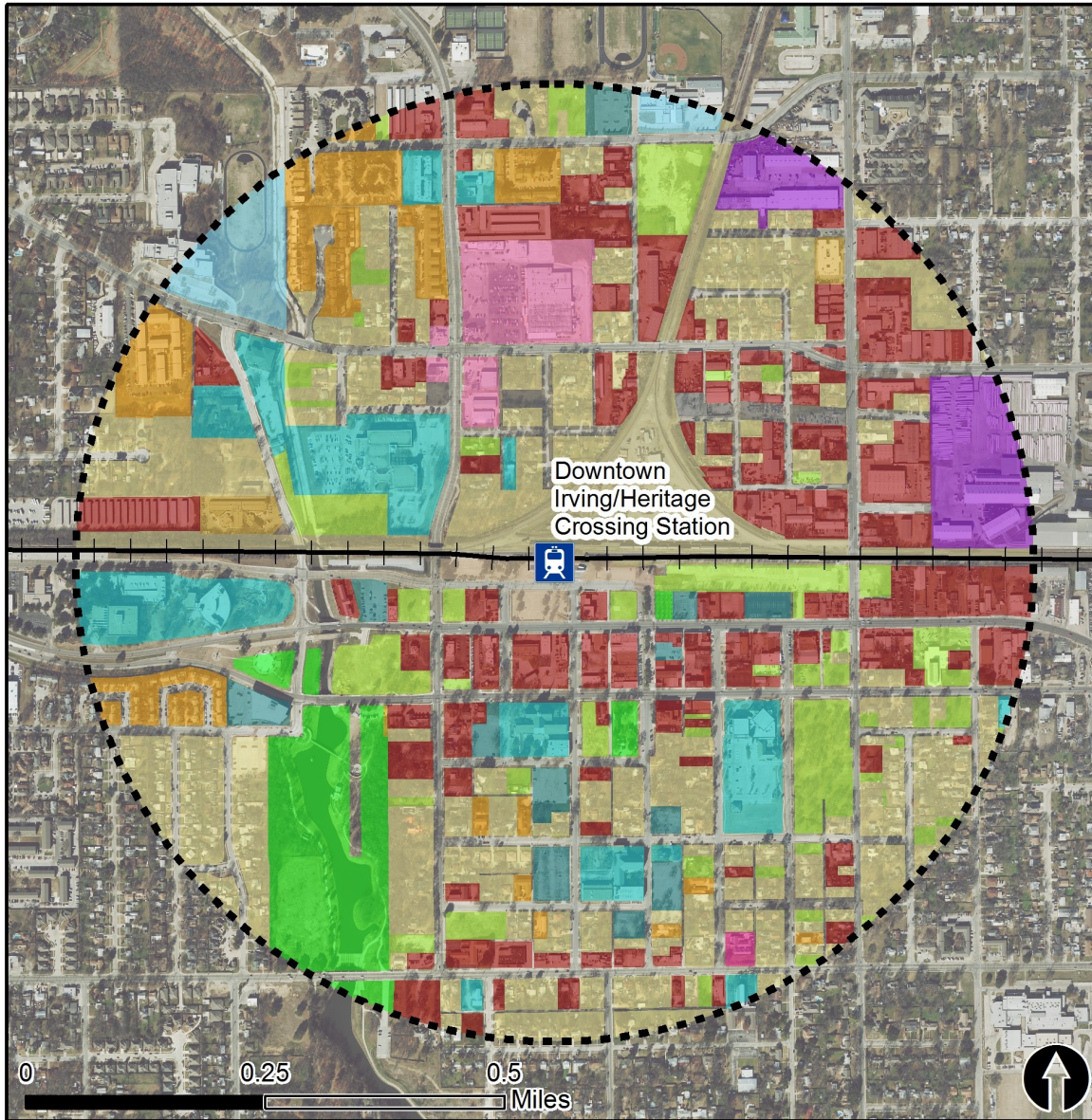
### Commute To Work<sup>3</sup>

Percent Automobile	93.0%
Percent Drive Alone	73.0%
Percent Carpool	20.0%
Percent Transit	2.2%
Percent Bike	0.7%
Percent Walk	0.6%
Percent Other	2.0%
Percent Work from Home	1.5%
Percent Zero-Vehicle Households	11.1%

### Traffic Survey Zone 2017 Employment Forecast<sup>2</sup>

Total Jobs	6,535
Job Density (jobs/sq. mile)	2,510

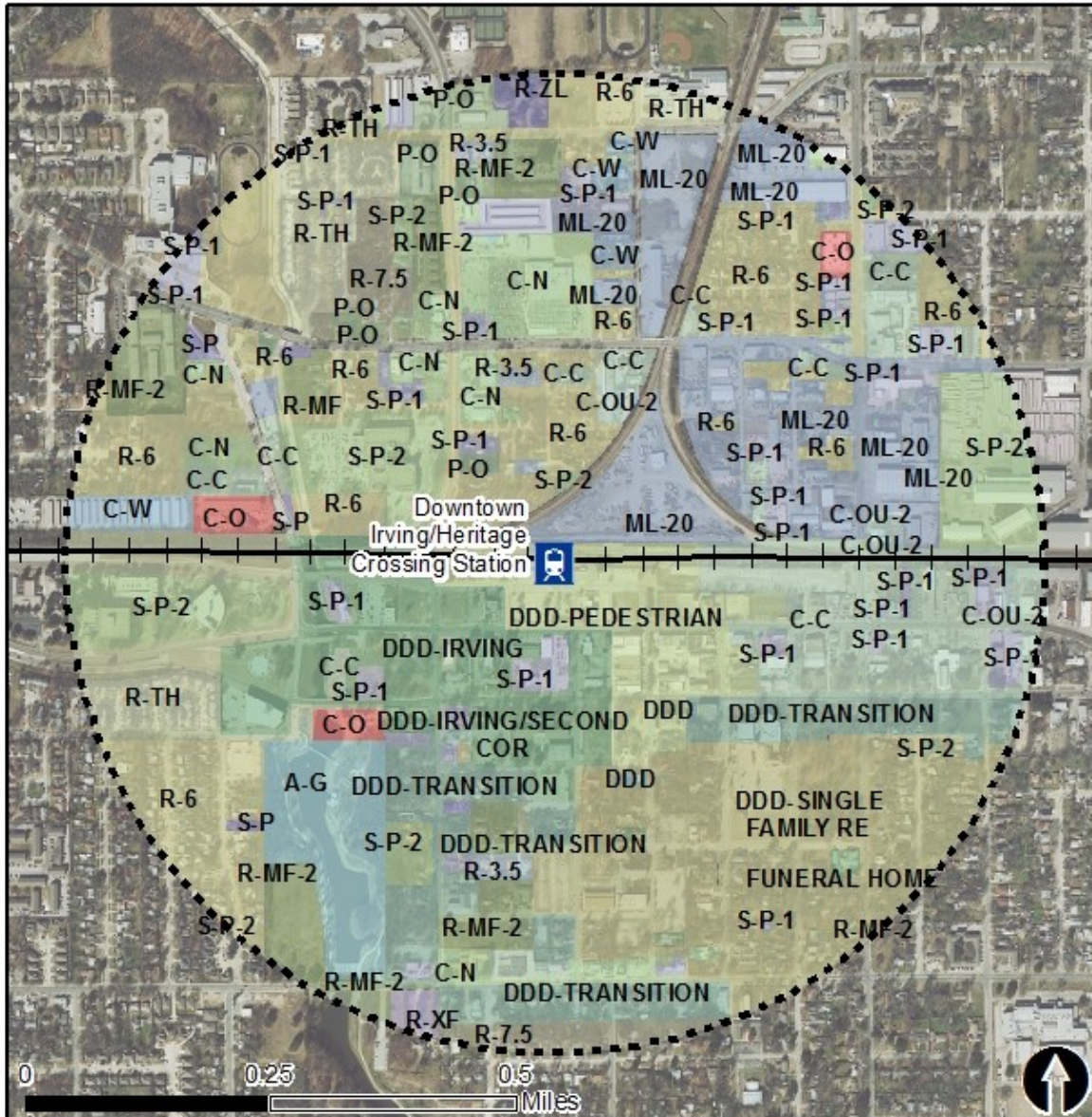
# Land Use (2016) – Downtown Irving/Heritage Crossing Station



0.5 Mile  
Station Buffer

Rail Stations Rail Lines

# Zoning (2016) – Downtown Irving/Heritage Crossing Station



## Zoning Districts

- A-G – Agricultural
- C-C – Community Commercial
- C-N – Neighborhood Commercial
- C-O – Commercial Office
- C-OU – Commercial Outdoor
- C-W – Commercial Warehouse
- DDD – Downtown Development District
- P-O – Professional Office
- ML-20 – Light Industrial
- R-2.5 – Four Family
- R-3.5 – Two Family
- R-6, 7.5 – Single Family
- R-MF – Multi-Family
- R-TH – Townhouse
- R-XF – Extra Family
- R-ZL – Zero Lot Line
- S-P-1 – Site Plan (Detailed)
- S-P-2 – Site Plan (Generalized)

For more information on zoning, please visit the City of Irving Zoning website at:

<http://cityofirving.org/733/Codes-and-Ordinances>



0.5 Mile  
Station Buffer



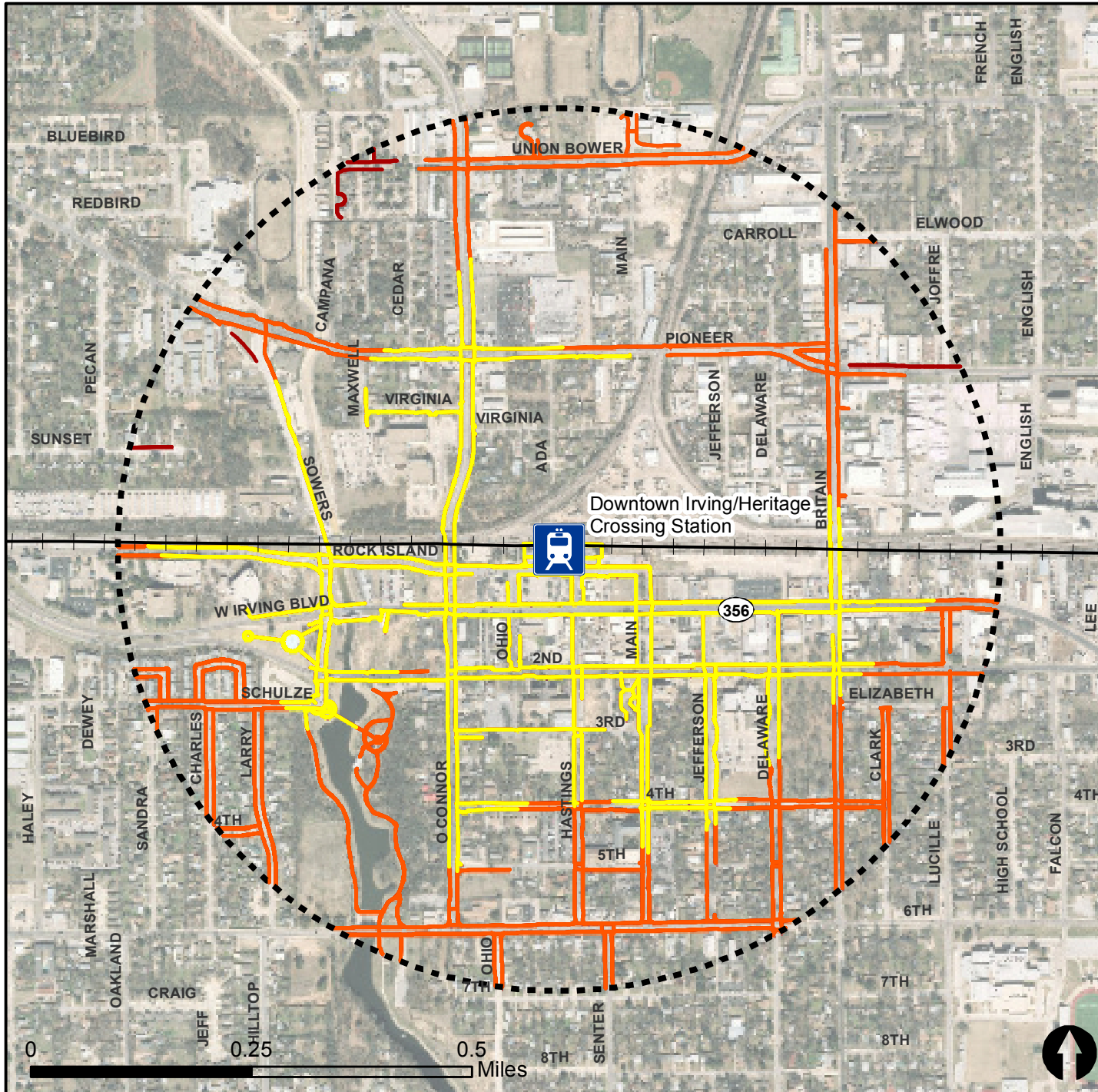
Rail Stations + + Rail Lines

# Pedestrian Routes to Rail - Downtown Irving/Heritage Crossing Station



North Central Texas  
Council of Governments

Last Updated: February 2015



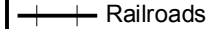
## Legend



Rail Stations



0.5 Mile  
Station Buffer



Railroads



Existing sidewalk facilities within a  
0.5 mile walk distance



Existing sidewalk facilities greater than  
a 0.5 mile walk distance

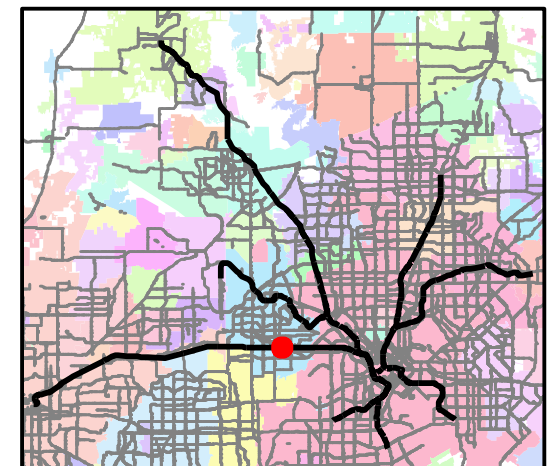


Existing sidewalk facilities that are  
disconnected due to a gap in the  
network

## Project Overview

The Pedestrian Routes to Rail study identifies all existing pedestrian facilities within a half-mile radius of existing light rail and commuter rail stations in the Dallas-Fort Worth region based on 2014 data. ArcGIS Network Analyst tool was used to identify continuous facilities that are less than or greater than a half-mile actual walking distance to a station. The maps also reflect existing facilities that are disconnected due to gaps or other barriers not allowing a continuous pedestrian route to a station. The maps do not reflect the condition or ADA compliance of the existing infrastructure. More information on the Routes to Rail study and methodology is available at:

[nctcog.org/RoutesToRail](http://nctcog.org/RoutesToRail)

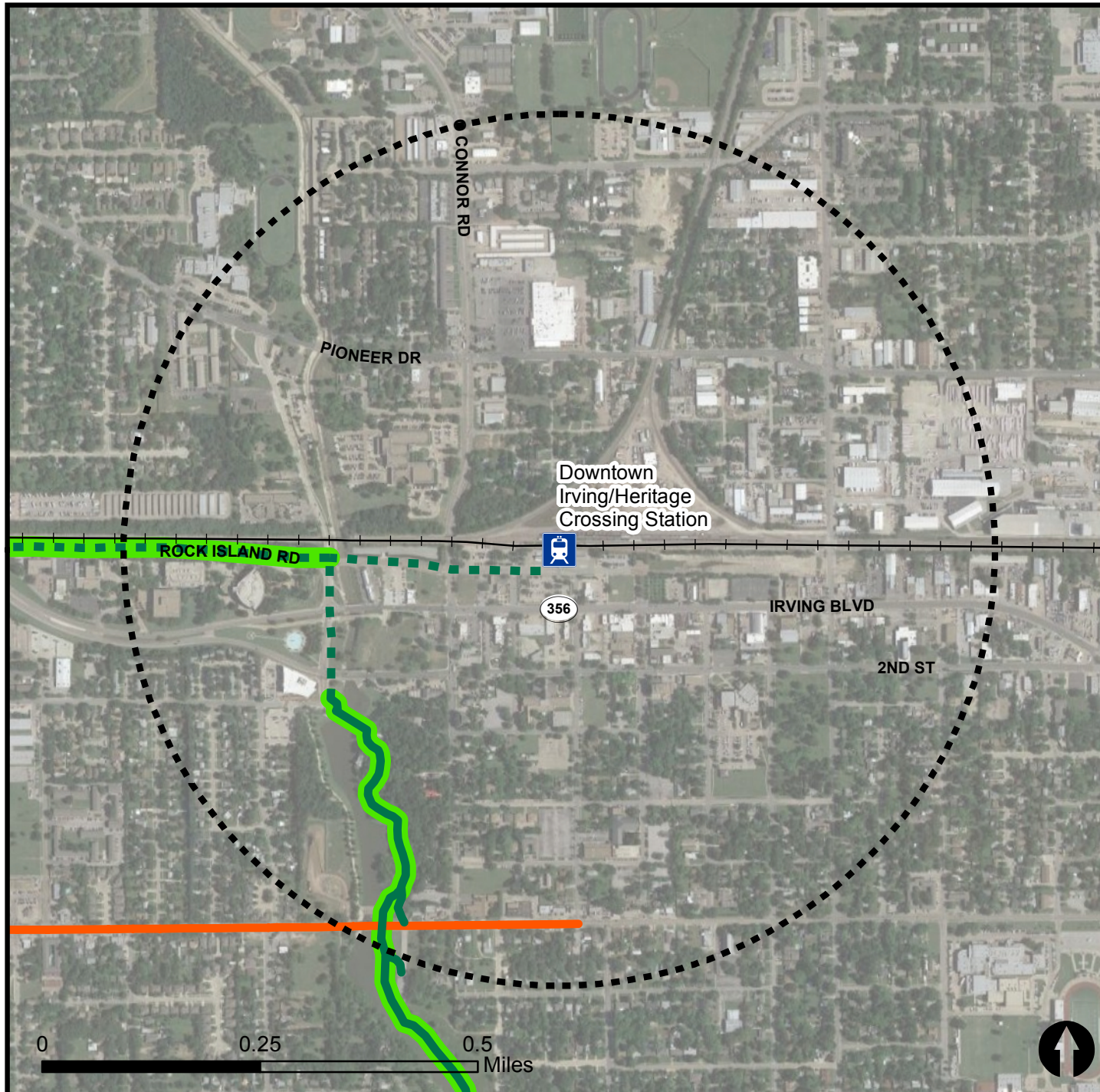


# Bicycle Routes to Rail - Downtown Irving/Heritage Crossing Station

Last Updated: October 2016



North Central Texas  
Council of Governments



## Legend

- Rail Stations
- 0.5 Mile Station Buffer
- Rail Lines
- On-Street Bikeway, Existing
- On-Street Bikeway, Planned
- 2040 Veloweb
- Off-Street Path, Existing
- Off-Street Path, Planned

## Project Overview

The Bicycle Routes to Rail study identifies all existing and planned bikeways in proximity to existing or under-construction light rail and commuter rail stations in the Dallas / Fort Worth region based on 2016 data. The maps reflect off-street paths (trails) and streets designated by local adopted master plans for dedicated bikeways (e.g. bike lanes, cycle tracks) located on the street. In accordance with the Texas Transportation Code, bicyclists have a right to the road. As such, the map does not reflect other roadways around the station that may have signed bike routes or by state law may be used by bicyclists. More information about the Routes to Rail study and methodology is available at:

[nctcog.org/RoutesToRail](http://nctcog.org/RoutesToRail)

